

Sabrent USB-DSC5 USB 2.0 to SATA/IDE Hard Drive Adapter

2.5" Notebook IDE Hard Drive

1. Connect the short 2.5" IDE connector from the Sabrent adapter to the pins on your 2.5" Hard Drive. Note the keyed pin and slot and make sure that the drive and the device line up properly and are securely connected:

Figure A:

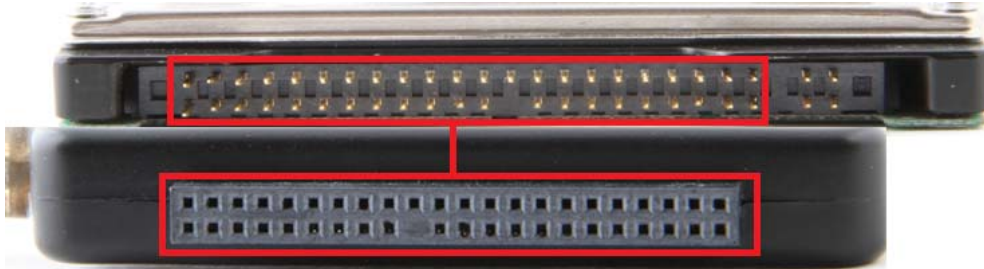


Figure B:

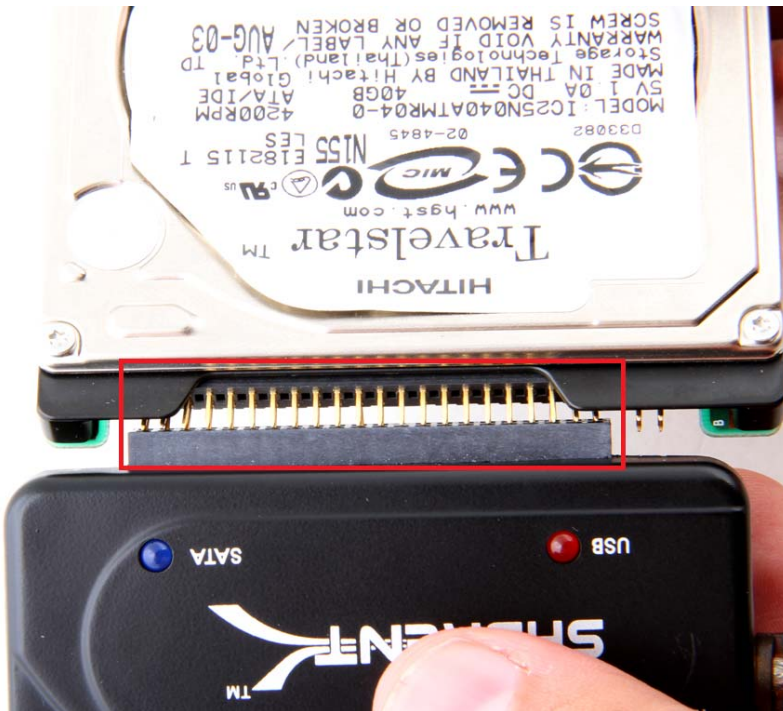
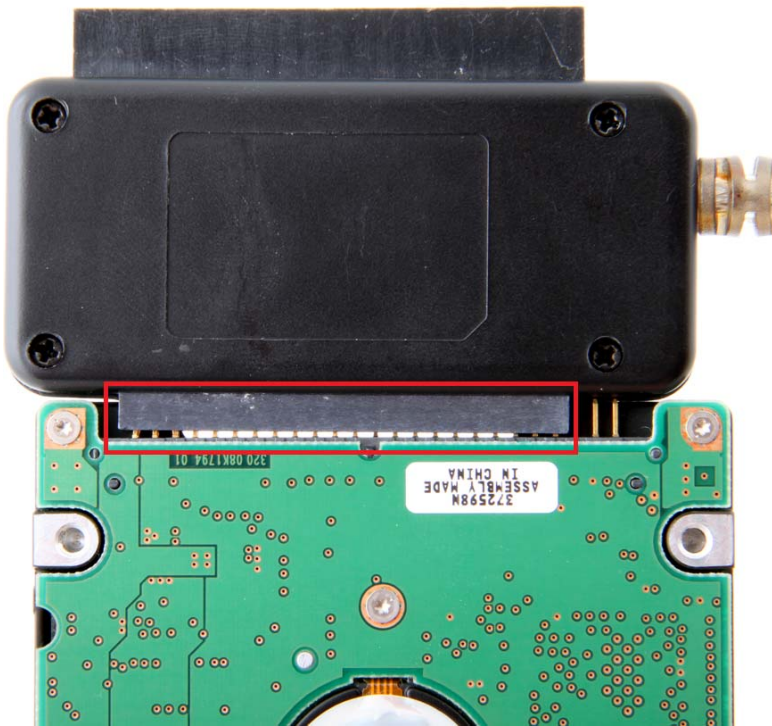


Figure C:

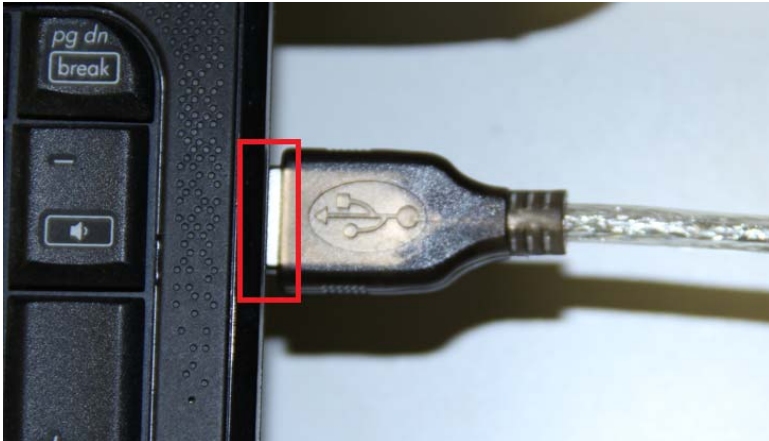


Figure D:



2. Connect the USB cable from the USB-DSC5 to an available USB port on your computer.

Figure A:



3. In most cases, the USB cable will supply sufficient power for the drive to spin up and initiate. Some larger capacity Hard Drives may require more power than USB to provide sufficient power to initiate. You may need to use the supplied power supply to provide the extra needed power:

Figure A:



Figure B:

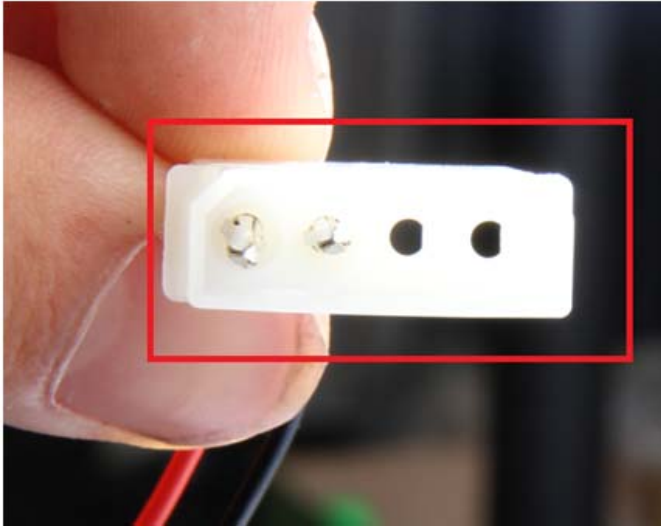


Figure C:



Figure D:

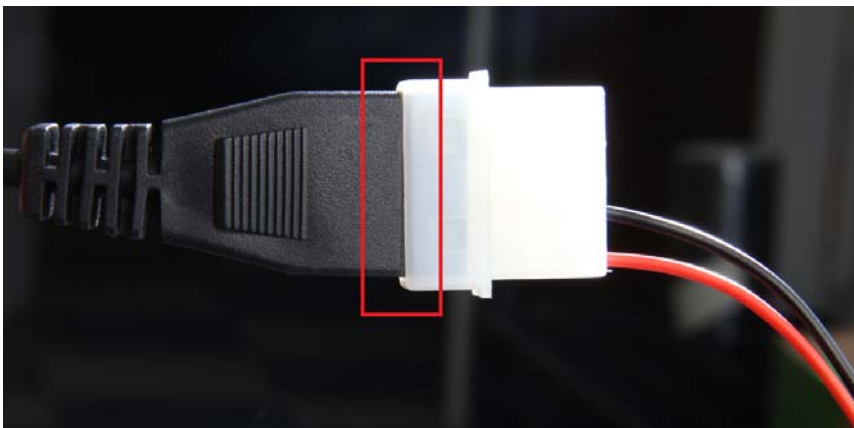


Figure E:

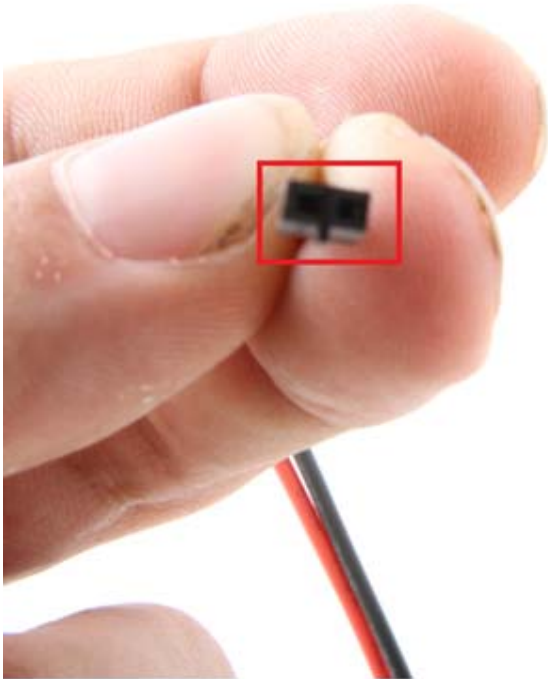


Figure F:

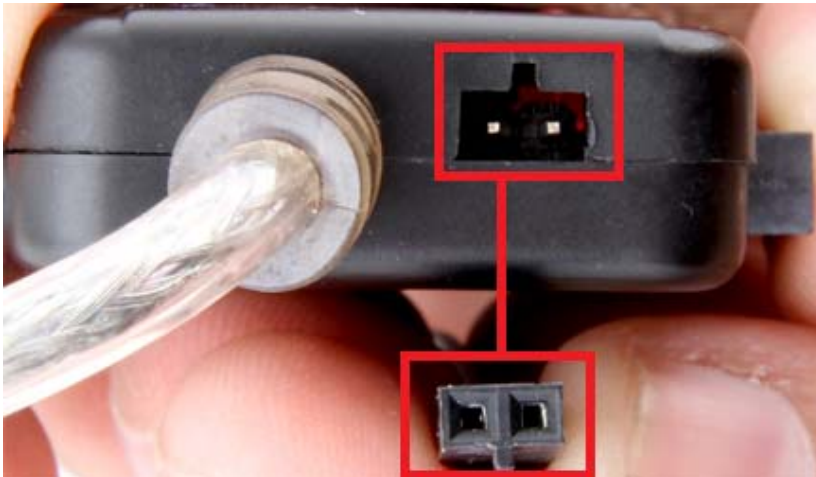


Figure G:



3.5" Desktop IDE Hard Drive

1. Most 3.5" IDE Hard Drives have **Jumpers**. Make sure they are set to **Master Only**. (Note: Please refer to the drive manufacturer's website for more information regarding your specific hard drive model.):

Figure A:



2. Connect the IDE power adapter directly in the IDE drive:

Figure A:



Figure B:



Figure C:



Figure D:



3. **Connect** the long 3.5 inch IDE connector to the pins on your hard drive. Note the keyed pin and slot and make sure that the drive and the device line up properly and are securely connected:

Figure A:

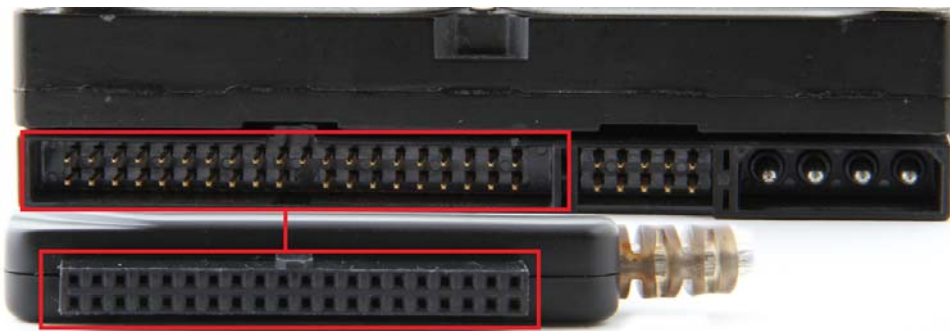
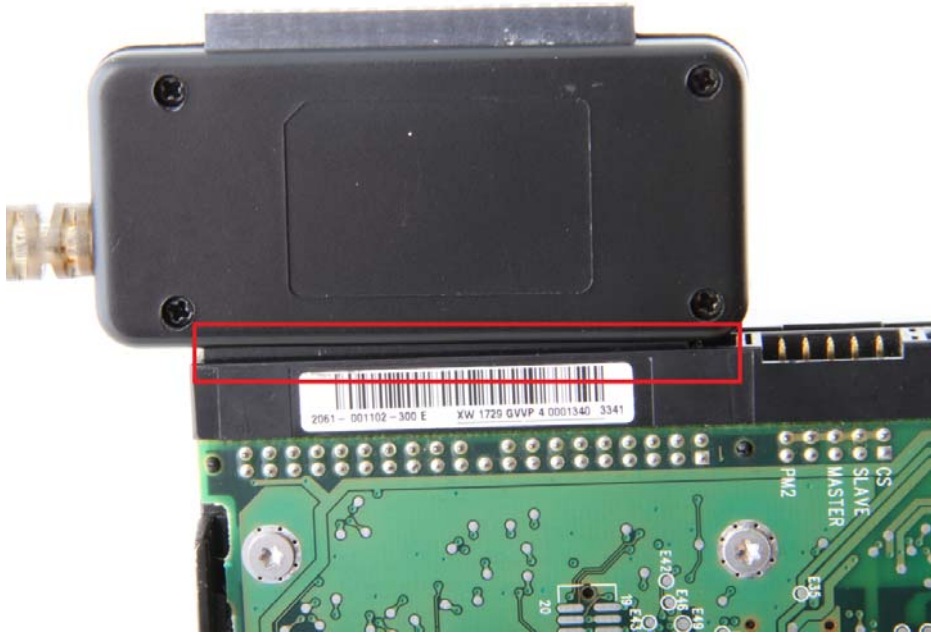


Figure B:

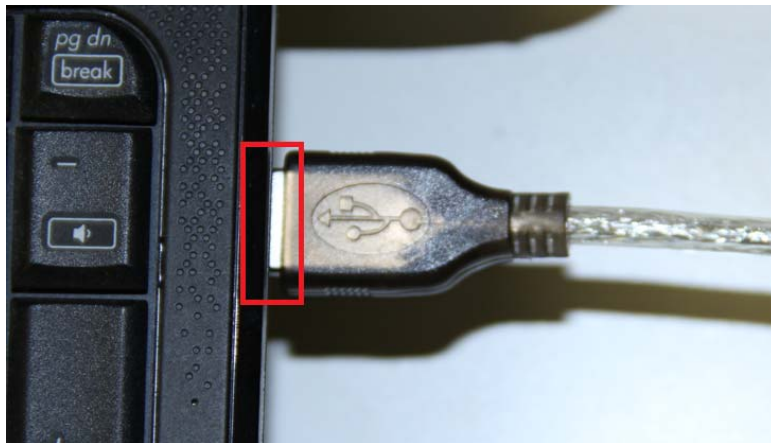


Figure C:



4. Connect the USB cable from the DSC5 to a USB port on your computer.

Figure A:



2.5/3.5 Inch SATA Drive

1. Connect the Sabrent converter to the power adapter, and then plug the SATA power end into the SATA drive directly:

Figure A:



Figure B:



Figure C:

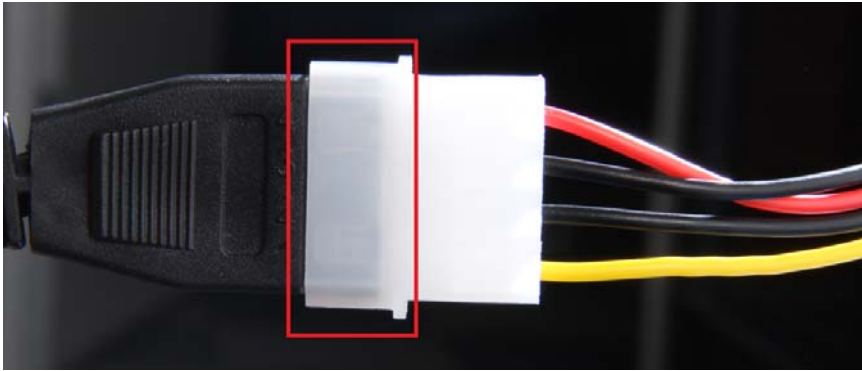


Figure D:

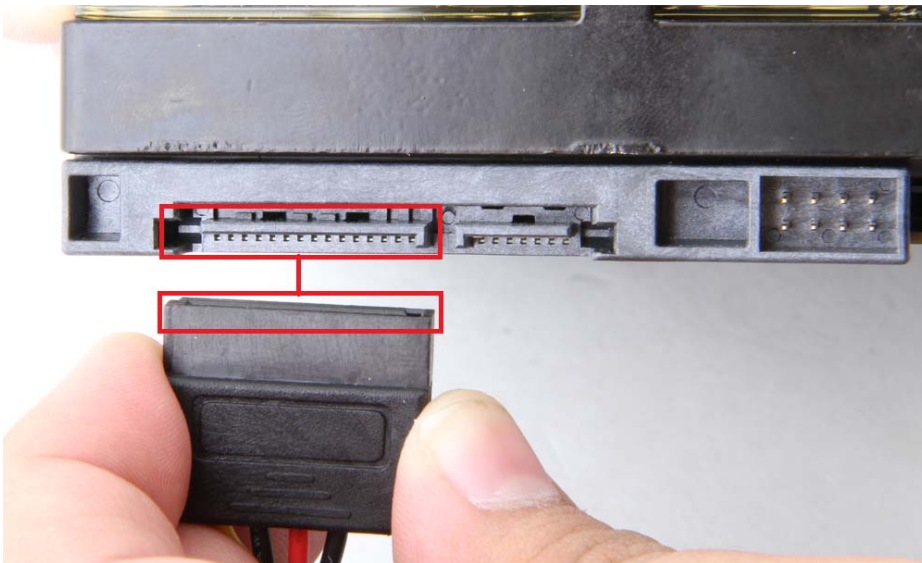
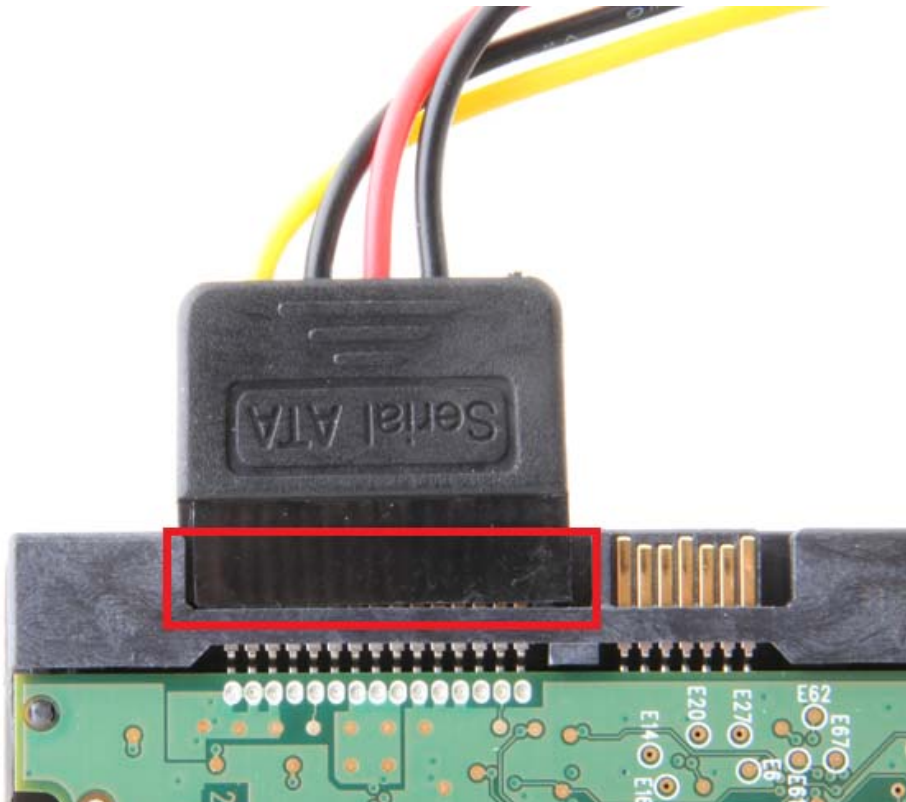


Figure E:



2. Connect the SATA **data cable** into the Sabrent Converter, and then connect the other end directly into the SATA drive:

Figure A:

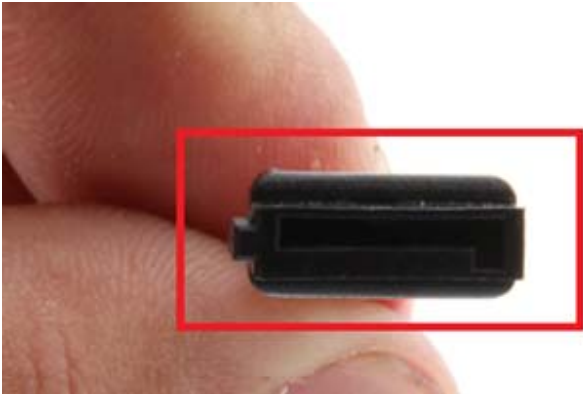


Figure B:

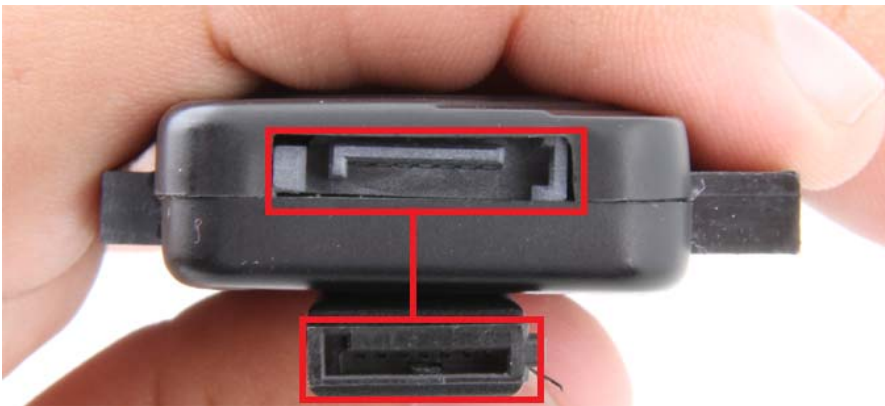


Figure C:



Figure D:



Figure E:

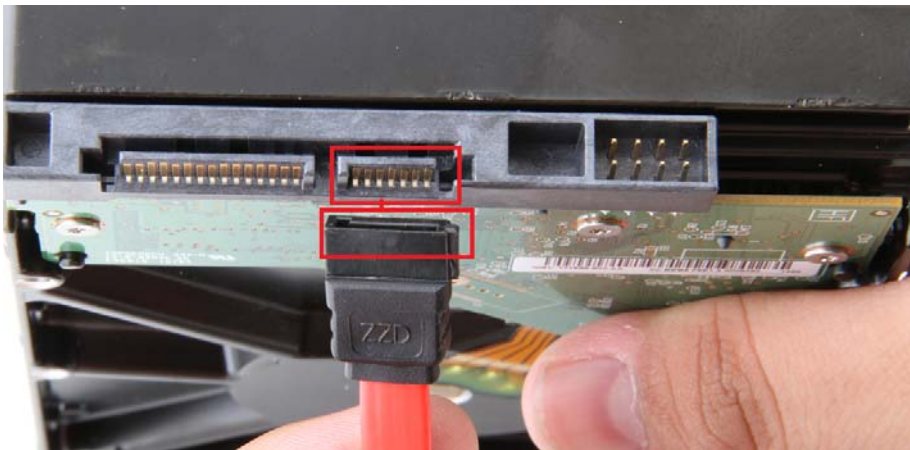
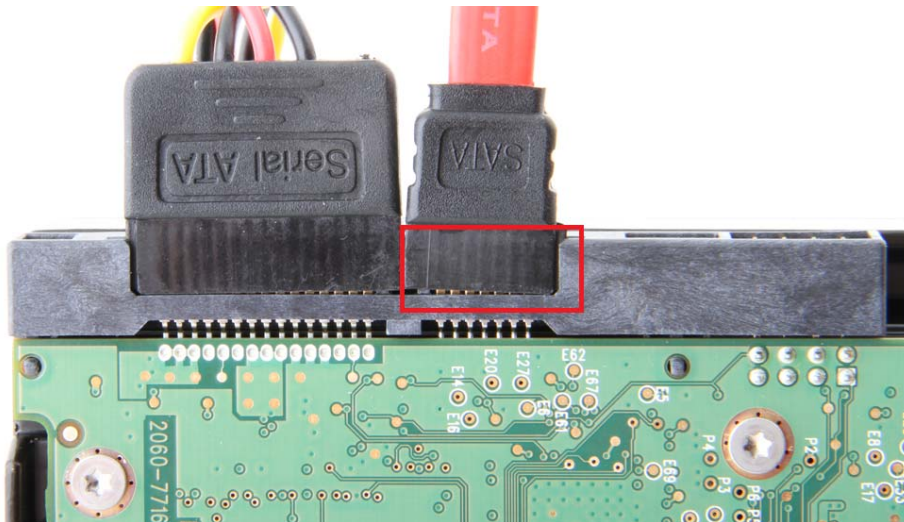
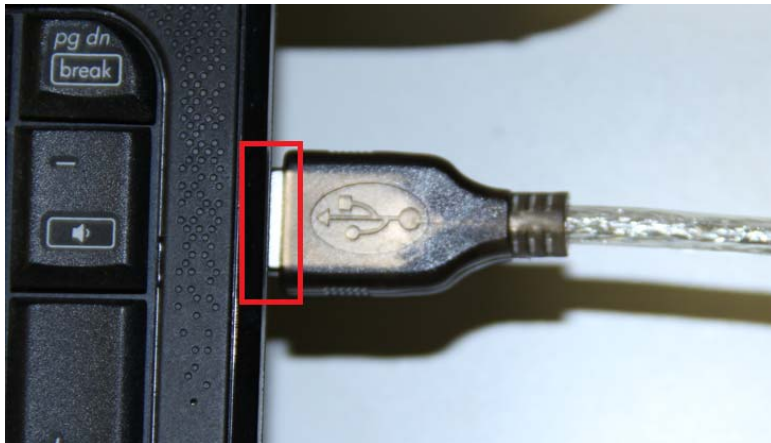


Figure F:



3. Connect the USB cable from the Sabrent converter to an available USB port on your computer.

Figure A:

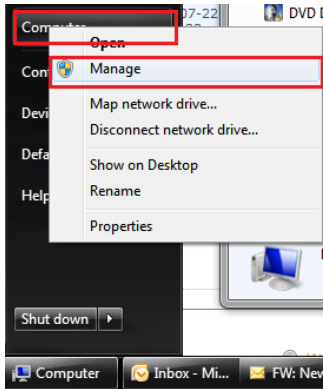


Hard Drive Setup

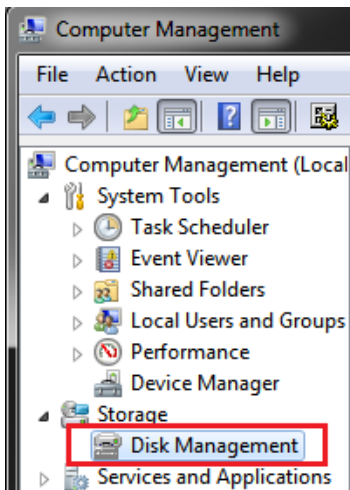
For Windows 2000/XP/VISTA/7, no drivers or software are necessary.

If the Hard-Drive is brand new you may need to initialize it first in order to cause the Drive Letter to appear:

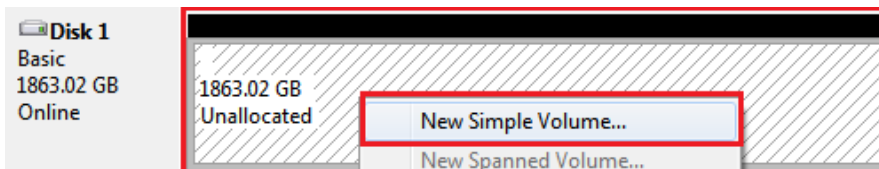
1. Click the **Start** button, **right-click** on “**My Computer**”, and select “**Manage**”:



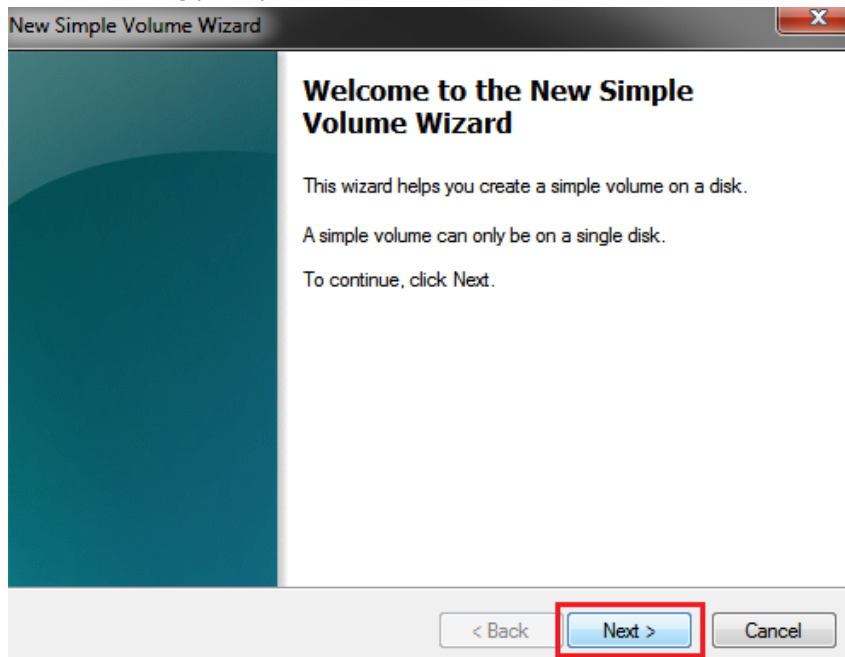
2. Click on “**Disk Management**”:



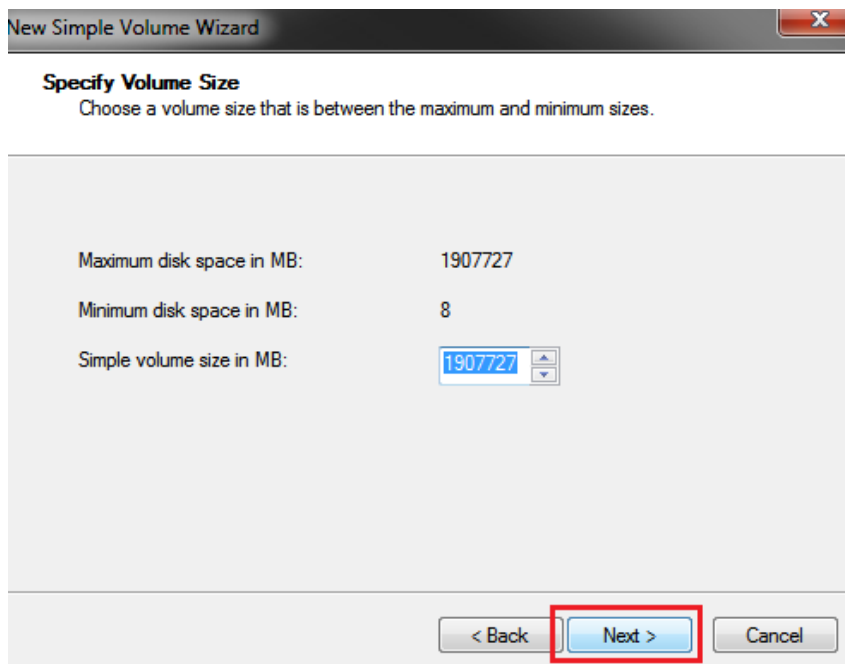
3. **Locate** the drive in the right column and **right-click** on the drive and click “**New Simple Volume**”:



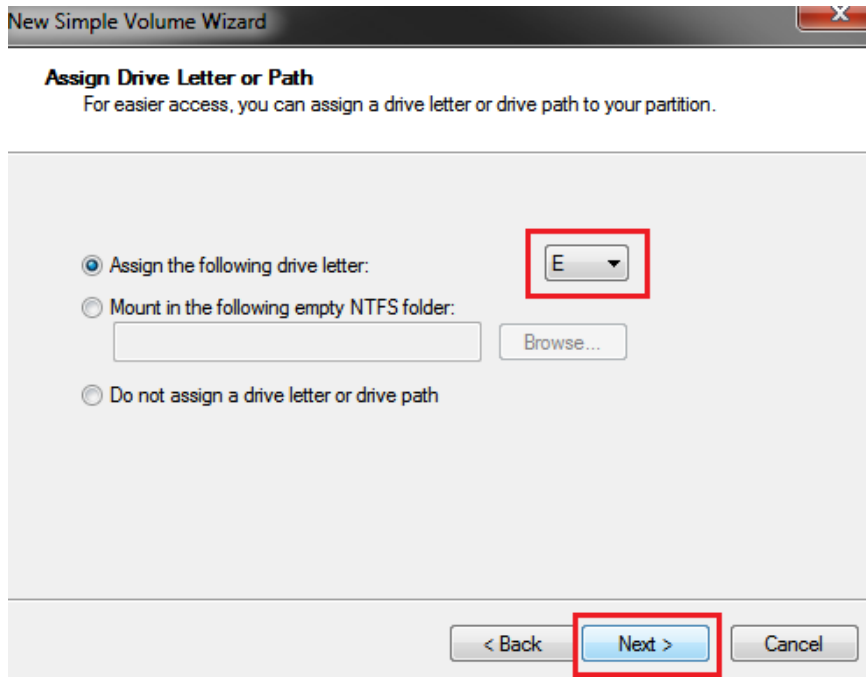
4. At the following prompt, click **“Next”**:



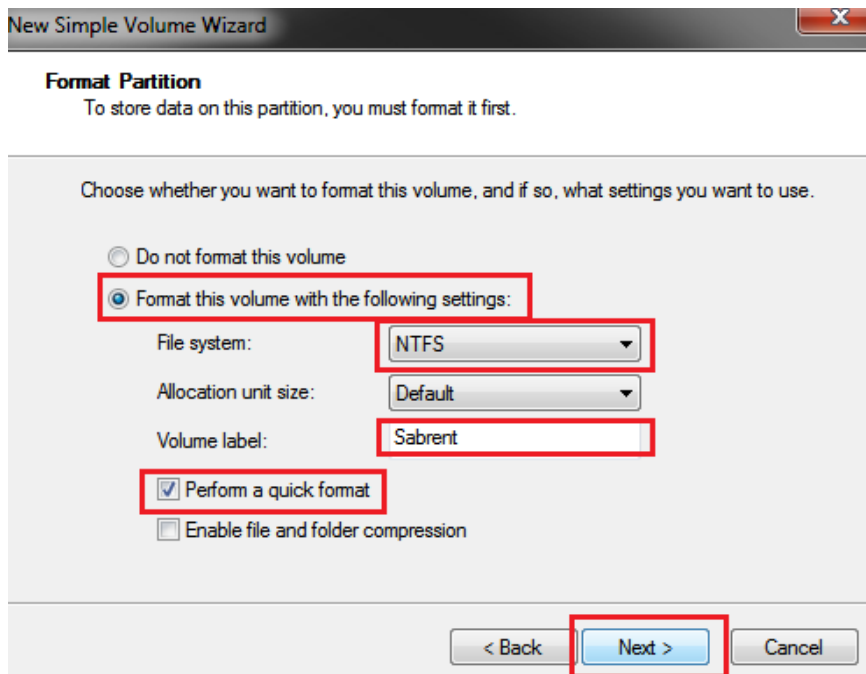
5. Click **“Next”**:



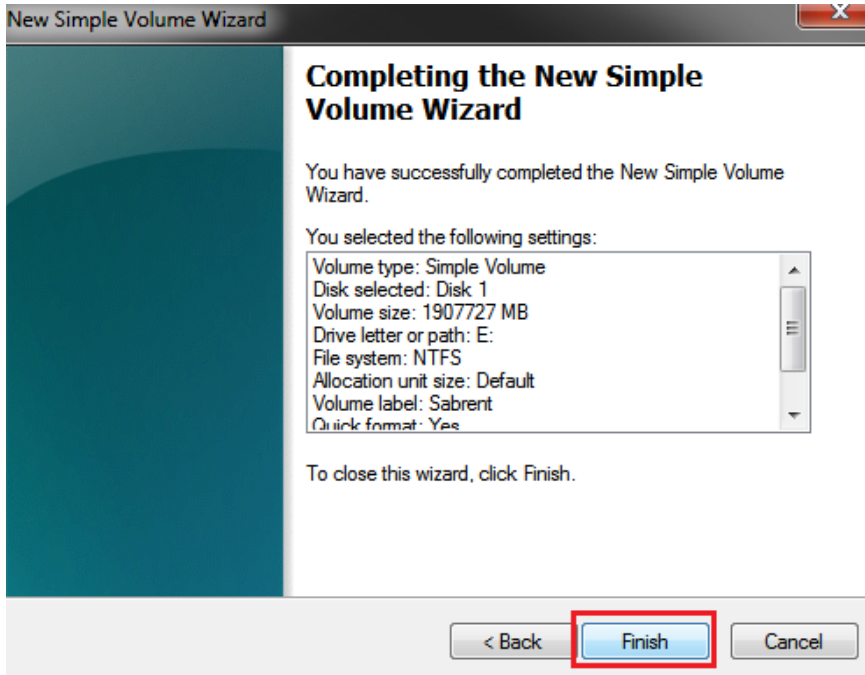
6. Assign a drive letter to the drive, then click “Next”:



7. Click on “Format this volume with the following settings:” Change the “File system” to “NTFS”. Change the “Volume label” to what you want the drive to be named. Click the checkbox for “Perform a quick format”. Click “Next”:



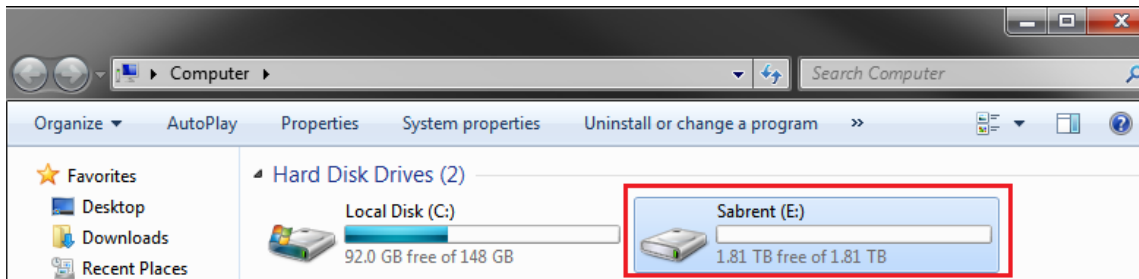
8. Click **“Finish”**. Windows will now begin formatting and initializing the disk:



Volume	Layout	Type	File System	Status	Capacity	Free Space	% Free
(C:)	Simple	Basic	NTFS	Healthy (Boot, Page File, Crash Dump, Primary Partition)	148.91 GB	92.12 GB	62 %
Driver (D:)	Simple	Basic	CDFS	Healthy (Primary Partition)	443 MB	0 MB	0 %
Sabrent (E:)	Simple	Basic	NTFS	Healthy (Primary Partition)	1863.01 GB	1862.87 GB	100 %
System Reserved	Simple	Basic	NTFS	Healthy (System, Active, Primary Partition)	100 MB	71 MB	71 %

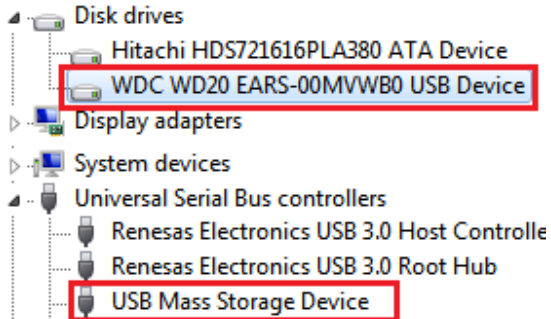


9. Open **“My Computer”** and verify that the drive shows up properly:



If the drive has already been formatted, you can skip these steps.

1. Check the “Device Manager” to make sure that the “USB Mass Storage Device” driver appears under the “Universal Serial Bus Controllers” section. Also check that the drive shows up under “Disk drives” as a “(Hard drive model number) USB Device”. There should be no error message in your Device Manager, such as a bold ? or ! :



2. You may also need to change the HDD settings from Dynamic to Basic, then format NTFS, and give it a drive letter, but you should back up the data on your drive before doing this. To convert the disk from Dynamic to Basic follow the instructions at the link included. <http://sabrent.com/support/knowledgebase.php?article=58>
3. **Please Note:** Make sure to disable disk drive password protection

Frequently Asked Questions:

1. **My drive died or was damaged in my previous computer. Will it work with this adapter?**

This adapter is the equivalent of plugging in the drive directly into your computer’s IDE or SATA port. If the drive was damaged to the point where it doesn’t work when plugged directly into the computer, then it is likely that it will not work using this adapter.

2. **I set my IDE drive’s Jumper to the Master setting, but it still doesn’t show up on my computer.**

Usually you will have to set the Jumper to Master, but depending on the specific drive and the specific settings of the computer, you may have to set it to Slave or Cable Select.

3. **My drive doesn’t show up on my computer, but it has data and works elsewhere.**

Make sure you are connecting the Hard Drive in the correct sequence: First connect the power supply, and then connect the USB Cable to the computer.

4. **Why doesn’t my 3 TB hard drive show up as full capacity?**

If the drive has is set to **MBR** (Master Boot Record) partition, then it will only allow a **maximum** usable amount of **2TB**. This limitation cannot be overcome in Windows 2000/XP. In Windows Vista & 7 there is support for larger Hard Drives when you use the **GPT** partition type:

To convert the disk to a **GPT** partition disk in Windows Vista and Windows 7:

Go to “**Disk Management**” (See steps 1-3), locate the disk in the list, **right click** the disk and **click** on “**Convert to GPT Disk**”. You should now have access to the full capacity of your >2 TB disk partition.

