

USB Broadband Device

RF-BCD2



Congratulations on your purchase of the RF-BCD2 USB Broadband Device. This dongle represents the state of the art in wireless communications design and is designed for reliable and trouble-free performance.

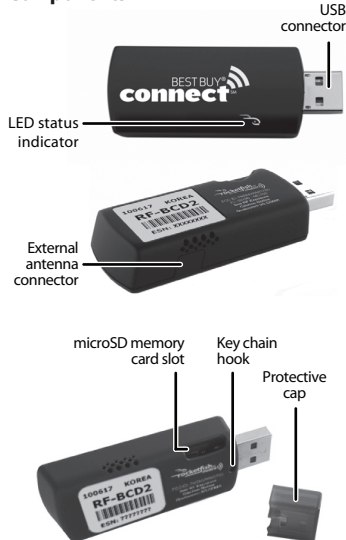
Features

- 3G Internet On-the-Go
- Adds mobile broadband connectivity to any PC
- Lightweight and portable
- Plug and Play
- microSD™ memory card slot
- Pre-installed software

Package contents

- USB Broadband Device
- USB flex cable
- Key chain
- *User Guide*
- *Quick Setup Guide*

Components

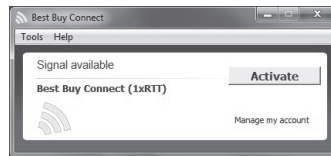


System requirements

- Windows® 7, Windows Vista®, or Windows® XP, and Mac OS® 10.4, 10.5, 10.6
- A PDF reader program
- Internet browser software (for example, Internet Explorer, Safari, Firefox, or Chrome)
- An available USB port

Setting up your USB broadband device

- 1 Log on to your PC as an administrator.
- 2 Plug your USB broadband device into a USB port on your PC.
- 3 In Windows: Run **setup.exe** to install *Best Buy Connect* software. After installation, you may need to restart your PC.
OR
In MAC OS: Open the **BestBuyConnect** icon, then double-click the **MAC Installer** to begin software installation.
- 4 Click **Activate**, then follow the on-screen instructions to select your service plan.



Connecting to the Best Buy Connect service

- 1 Insert the USB broadband device.
- 2 Double-click the **Best Buy Connect** desktop icon.
- 3 Click **Connect**.
- 4 When you have finished with your Internet session, click **Disconnect**.

Inserting or removing a microSD memory card

Cautions:

- Do not force the microSD memory card into the slot. You may damage the card or the slot.
- Do not remove the card while data is being transferred. You may corrupt or lose the data.

- 1 If this is the first time you are inserting a memory card, remove the plastic insert in the memory card slot by gently pressing in on the insert. When the blank pops out slightly, pull the insert from the slot.
- 2 Gently insert a microSD memory card into the slot with the gold contact points facing up. Press in on the card until it clicks into place.



- 3 To remove the microSD memory card, gently press in on the card until it pops out, then pull the card from the slot.
Note: Store memory cards in a dry, safe place.

Using a microSD memory card

- 1 Insert a microSD memory card into the card slot.
- 2 Plug your USB broadband device into a USB port on your PC. If this is the first time you have connected your USB broadband device with a memory card inserted, your PC automatically detects the new hardware, and the unplug/eject icon appears on the computer taskbar. The microSD memory card appears in *My Computer* or *Computer* as a drive letter.
- 3 Copy files to or from the microSD memory card in the same way you copy files from any drive. For more information on using your USB Broadband Device, see your *User Guide*.

Troubleshooting

For information on troubleshooting, refer to the *User Guide*.

Specifications

For information on specifications, refer to the *User Guide*.

FCC Part 15

This device complies with Part 15 of the FCC Rules.

One-year limited warranty

Visit www.rocketfishproducts.com for details.

Contact Rocketfish:

For customer service call 1-800-620-2790
www.rocketfishproducts.com

Distributed by Best Buy Purchasing, LLC
7601 Penn Avenue South, Richfield, MN 55423-3645 USA
© 2011 BBY Solutions, Inc., All Rights Reserved. ROCKETFISH is a trademark of BBY Solutions, Inc. All other products and brand names are trademarks of their respective owners.
Best Buy Connect™ is a registered service mark of Best Buy Connect, LLC, Minneapolis, MN

© 2011 Best Buy Connect, LLC All rights reserved
Best Buy Connect Customer Care
(866) 652-4141
BestBuyConnect@response.bestbuy.com
www.BestBuyConnect.com