

Memorex



M-Flyer™ Pilot TravelDrive Quick Start Guide



Thank you for purchasing a Memorex M-Flyer Pilot TravelDrive. Your M-Flyer Pilot TravelDrive is a multi-purpose and universally compatible portable storage device.

.....

GETTING STARTED:

Step 1- Check your Operating system (OS):

- For Windows® 2000 / Windows® XP / Vista.
There is no need to install any drivers! Go straight to **Step 2**-“Using Your M-Flyer Pilot TravelDrive.”
- For Apple Macintosh Mac OS 9.x or higher (9.x USB 1.1 support only)
There is no need to install any drivers! Go straight to **Step 2**.

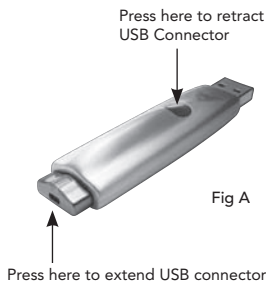
Note: Any operating system used by your computer that is not listed above is not supported by this product.

Step 2- Using Your Memorex M-Flyer Pilot TravelDrive

Your new Memorex M-Flyer Pilot TravelDrive is already to use now. Follow the simple steps below to begin using your new portable storage device:

1. Extend the USB connector by pressing on the rear of the drive until the USB connector is locked in the open position as shown in Fig A. Insert your new M-Flyer Pilot TravelDrive into an available USB port on you computer. Fig B.

Note: You may be required to wait up to a few minutes after inserting your drive for the first time while your new TravelDrive is configuring itself to your computer system. (Click "OK" or "Agree" to any driver prompts should they appear).



2. Restart your computer now to ensure driver installation and drive setup.
3. At the desktop screen double-click on "My Computer." The M-Flyer Pilot TravelDrive should appear as a "Removable disk" icon. The actual drive letter assigned to your TravelDrive will vary depending on how many other drives are on your system.

Important Note: Do not remove the USB Flash Drive while the LED is flashing!

Interrupting the data flow while the LED is flashing can potentially corrupt existing data that is being transferred as well as other data stored on the drive. You may also potentially lose access to your drive and your ability to retrieve any files stored on the USB Flash Drive. Once the LED returns to an unblinking state, the data transfer operation is complete; and it is safe to remove your drive.

Important Note: Although your TravelDrive is compatible with either a USB 2.0 or USB 1.1 port, performance is maximized when using a USB 2.0 port. Transfer speeds will vary and differ significantly when connected to USB 1.1 port. Actual read and write speeds may vary depending on file types, OS, etc.

Software systems Requirements (PC only):

- Pentium III 300MHz or higher
- Windows 2000 (SP4)/ XP (SP2) / Vista

Installation and using the Portable Vault™ Security Software (Optional)

Memorex Provides added security and protection with the Portable Vault™ security software.

The software has been preloaded onto your drive and can be installed by double-clicking the **Portable Vault Installer**.

- Follow the on-screen instructions for installation and restart your computer when requested to complete the process.

A User's Guide for **Portable Vault™** is available, as a download at www.memorex.com/html/support.php. The User's Guide requires Adobe Acrobat Reader, which can be download at www.adobe.com if you do not already have this application installed.

Enabling the ReadyBoost™ Feature (PC with Windows Vista™ ONLY)

Your TravelDrive (also M-Flyer Pilot) offers the "Enhanced For Windows® ReadyBoost™" feature which is available on any PCs with Microsoft Windows Vista Operating System. The Readyboost is an optional feature that allows ReadyBoost capable FlashDrives to improve your system's performance. This feature allows the user to use their ReadyBoost capable USB Flashdrive as an additional memory, thereby providing quicker access to data compared to accessing the information from the hard drive.

To enable this feature, simply follow the steps below:

1. Insert your Memorex TravelDrive into the available USB port on your computer.
2. The Windows Vista operating system should recognize the drive and will prompt you an option to "Speed up my system". Select the "Speed up my system" to enable this feature (Fig 1).
3. The TravelDrive device properties window will appear. Select the "Use this device" (Fig 2).
4. Click "OK" to enable the ReadyBoost feature. During this process, the LED on your TravelDrive will be blinking. Please **DO NOT** remove your drive until the LED has stopped blinking.

Note: Windows Vista will determine the optimal capacity for ReadyBoost. You may change the default capacity by moving the slider or by clicking on the up and down arrow (Fig.2). However, the default setting is Highly recommended for optimal performance.

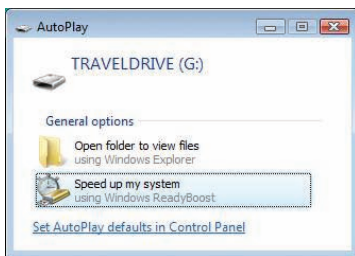


Fig 1



Fig 2

Disabling the ReadyBoost™ Feature

1. Double-click the Computer icon on your desktop.
2. Right-click on the TRAVELDRIVE and select Properties (Fig 3).
3. Click the ReadyBoost tab and select the "Do not use this device" (Fig 4).
4. Click "OK" to proceed disabling the ReadyBoost feature.



Fig 3



Fig 4

FAQs

- *Do all USB Flash Drives support the ReadyBoost feature under Windows Vista?*
No. The USB Flash Drives MUST meet the minimum Random Read and Write speeds requirements to support the ReadyBoost feature.
- *Can I format my TravelDrive while the ReadyBoost feature is enabled?*
No. The ReadyBoost feature MUST be disabled prior to formatting your TravelDrive.
- *Does ReadyBoost feature support multiple ReadyBoost capable USB Flash Drives?*
No. Windows Vista allows only one drive at a time to be used for the Ready Boost feature.
- *How do I know the ReadyBoost feature is working or enabled?*
You can confirm that ReadyBoost feature has enabled by right clicking your TravelDrive and selecting Drive Properties (Fig 3). After Selecting the Ready Boost Tab, you can verify if "Use this device" item is shown as selected under "Speed up your system by utilizing the available space on this device" (Fig 4), then your ReadyBoost feature has been enabled and is functioning.
- *How can I enable the ReadyBoost feature if I did not choose to enable it on the TravelDrive's first insertion to Computer using Microsoft Windows Vista?*
If you would like to enable the ReadyBoost feature, right click your Travel Drive and selecting Drive Properties (Fig 3). Under the ReadyBoost Tab, select "Use this device" item shown under "Speed up your system by utilizing the available space on this device" (Fig 4), Select OK to proceed enabling your ReadyBoost Feature.



TECHNICAL ASSISTANCE

Should you require assistance or have questions regarding your Memorex TravelDrive, you can find answers on our website at www.memorex.com/service_support/faq.php or if you residing in USA or Canada, you may contact us TOLL FREE at 877 – Is it live (877-474-8548).

MEMOREX PRODUCTS LIMITED WARRANTY

Memorex warrants this product against defects for two years from the date of original purchase. Purchaser's exclusive remedy is limited to replacement of any defective product. This warranty applies only to this product and excludes bundled software, connected equipment or data recorded in any form. In no event shall Memorex be responsible for any direct, incidental, consequential or other damages of any kind. For further information or to obtain warranty service please go to www.memorex.com.

Some jurisdictions do not allow limitations on how long an implied warranty lasts, or the exclusion or limitation of incidental or consequential damages, so the above limitations or exclusions may not apply to you. This limited warranty gives you specific legal rights, and you may have other rights which may vary from one state, province or country to another.

