



## Quick Installation Guide

### **SkyIPCam500 Night Vision Network Camera**

Model # AICN500



## Package Contents:

- Night Vision Network Camera
- Camera Stand
- Power Adapter
- Ethernet Cable (Cat.5)
- Utility CD
- Quick Installation Guide

## Section 1

*This Quick Installation Guide only provides basic instructions. For detailed information on using this product, please refer to the User's Manual on the supplied CD.*

## Getting Started

**Step 1** Connect one end of the Ethernet cable to the IP Camera and connect the other end to one of the LAN ports on your router or switch.

**Step 2** Power on the IP Camera by connecting one end of supplied power adapter to the power jack of the Camera and connecting the other end to the electrical outlet.

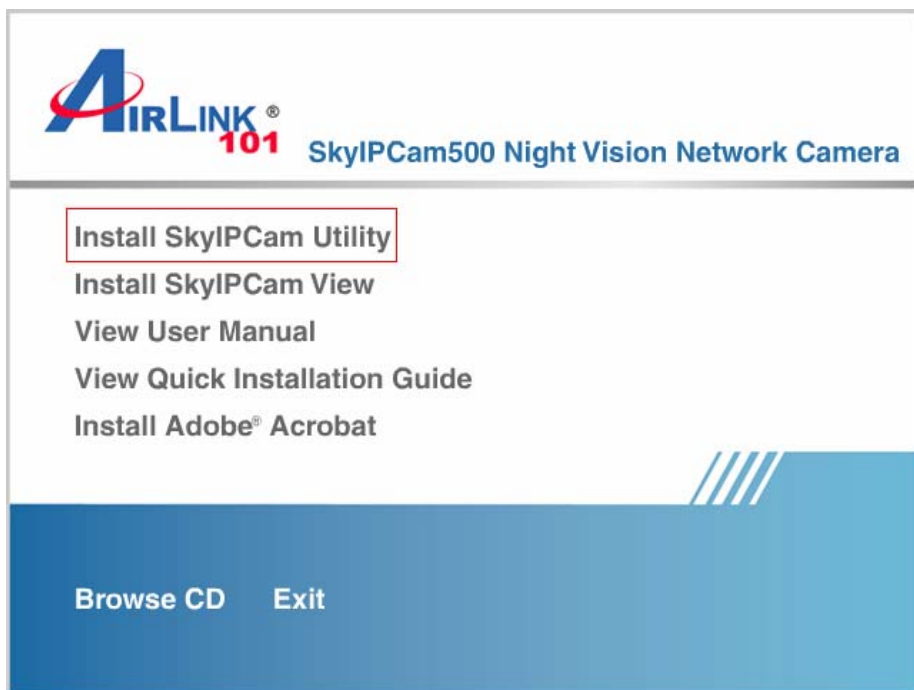
**Step 3** Verify that the yellow light (Power) is solid and the green light (Link) is blinking.

## Section 2

### Installing the SkyIPCam Utility

**Step 1** Insert the provided CD and wait for the auto-run screen to appear.

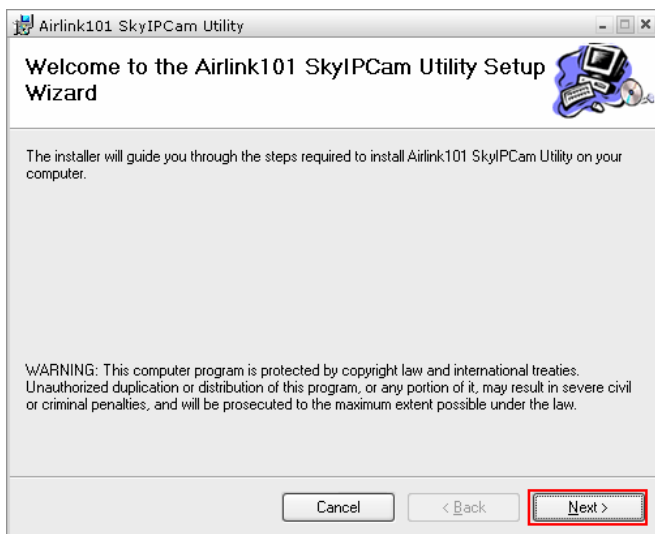
**Step 2** Click on **Install SkyIPCam Utility**.



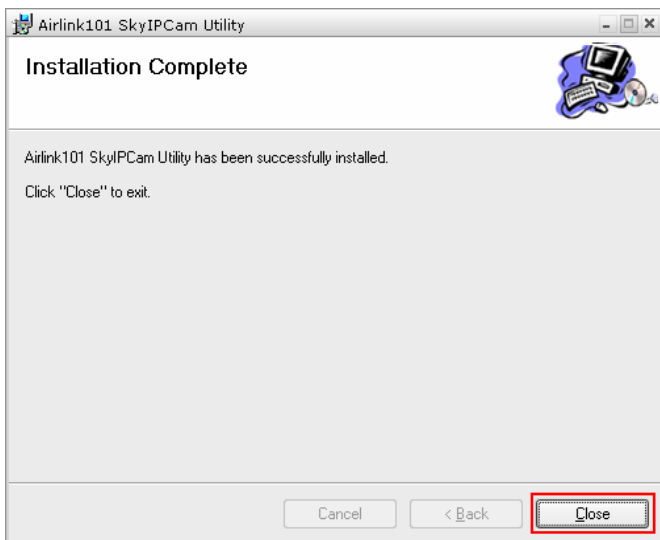
**Note:** If the auto-run screen does not appear automatically, go to **Start, Run,** type:

**D:\Utility\Setup.exe** (where **D** is the letter of your CD drive) and click **OK**.

**Step 3** Keep clicking **Next** on the following screens.



**Step 4** Click **Close** to complete the installation.



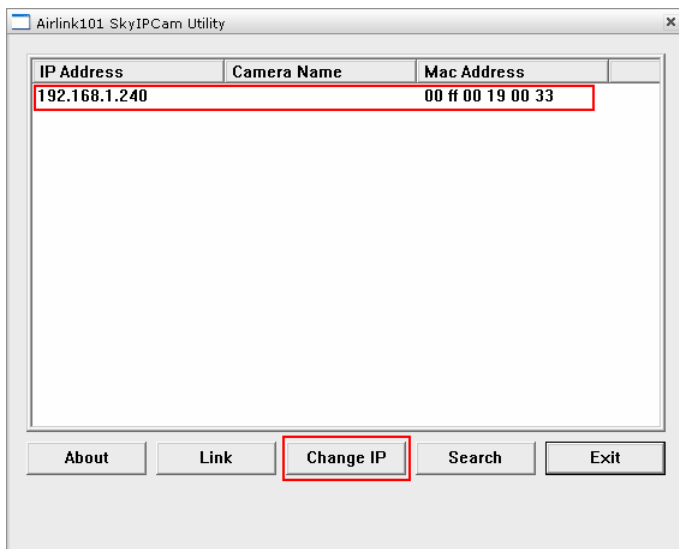
## Section 3

### Using the SkyIPCam Utility

**Step 1** Go to **Start > (All) Programs > AirLink101 > AirLink101 SkyIPCam Utility**



**Step 2** Select the IP Camera you want to configure from the list and click on the **Change IP** button.



**Note:** If the Camera's IP address does not show up in the window, make sure the camera is properly connected to the same network as your computer is, and then click on the **Search** button.

**Step 3** You may simply accept the suggested **Static IP**, or you can manually change the last 3-digit number of the IP Address, in case that the suggested one has already been used by another device in the same network. Another option is that if your router's DHCP server is enabled, you can select **DCHP**, so the router will automatically assign a dynamic IP address to your camera.

Enter “**admin**” for both **ID** and **password**, and click **Change**.

Change IP Address

☒ Static IP

IP Address: 192 . 168 . 1 . 240

Submask: 255 . 255 . 255 . 0

Default gateway: 192 . 168 . 1 . 1

☐ DHCP

Administrator ID & Password

ID:

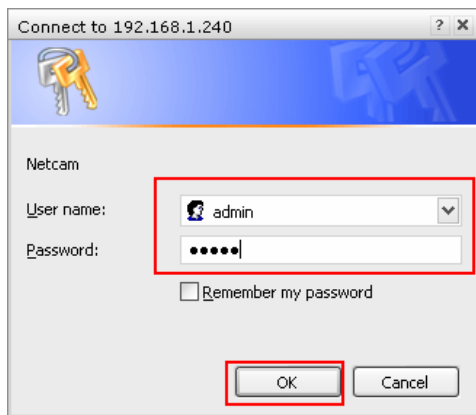
Password:

**Step 4** Once the utility has saved changes, it will return to the original screen. Select your camera from the list and click **Link**.

Airlink101 SkyIPCam Utility

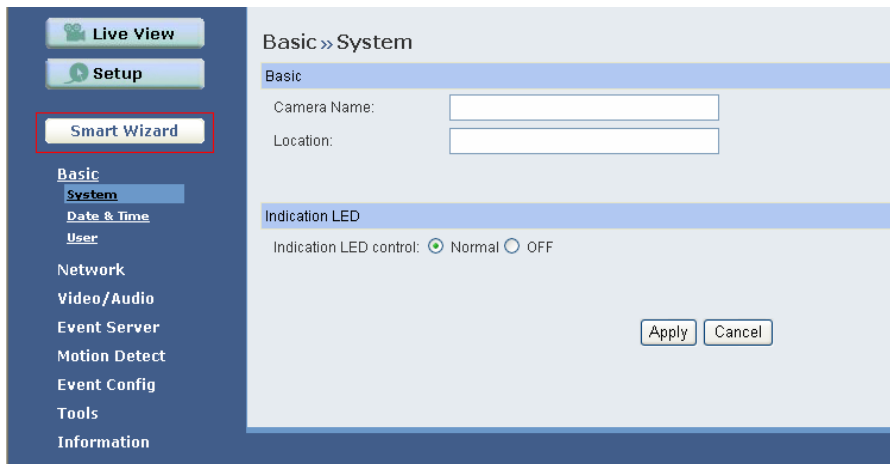
IP Address	Camera Name	Mac Address
192.168.1.240		00 ff 00 19 00 33

**Step 5** When you are prompted for the username and password, enter “admin” for both **User name** and **Password**, and click **OK**.



A dialog box titled "Connect to 192.168.1.240" with a key icon. It contains a "Netcam" section with "User name:" and "Password:" labels. The "User name" field contains "admin" and the "Password" field contains ".....". A red rectangle highlights both input fields. Below them is a checkbox labeled "Remember my password" which is unchecked. At the bottom, there are "OK" and "Cancel" buttons, with the "OK" button highlighted by a red rectangle.

**Step 6** The camera viewing window will appear. Click on **Setup**, and then click on **Smart Wizard**.



The interface shows a sidebar on the left with buttons for "Live View", "Setup", and "Smart Wizard" (highlighted with a red rectangle). Below these are menu items: "Basic", "System" (highlighted), "Date & Time", "User", "Network", "Video/Audio", "Event Server", "Motion Detect", "Event Config", "Tools", and "Information". The main area is titled "Basic » System" and has a "Basic" sub-header. It contains fields for "Camera Name:" and "Location:". Below this is a section titled "Indication LED" with a label "Indication LED control:" and two radio buttons: "Normal" (selected) and "OFF". At the bottom right are "Apply" and "Cancel" buttons.

**Step 7** Enter a name for your camera and a location if you like. Then enter “admin” for both **Admin Password** and **Confirm Password**. Click **Next**.

Welcome to the Smart Wizard. This wizard will help you quickly set up the Network Camera to run on your network.

### Camera Setting

**Camera Name:** Enter a descriptive name for the camera. For example, camera 1.

**Location:** Enter a descriptive name for the location used by the camera. For example, meeting room 1.

**Admin Password/Confirm Password:** Enter the administrator password twice to set and confirm the password to access the camera's Configuration Utility.

Camera Name:

Location:

Admin Password:

Confirm Password:

**Step 8** You can change the camera's IP settings in the below window. If you have done this in Step 3, click **Next** and go to the next step.

### IP Setting

**DHCP:** Select this option when your network uses the DHCP server. When the camera starts up, it will be assigned an IP address from the DHCP server automatically.

**Static IP:** Select this option to assign the IP address for the camera directly. You can use IP Finder to obtain the related setting values.

- IP Address: For example, enter the default setting 192.168.1.240.
- Subnet Mask: For example, enter the default setting 255.255.255.0.
- Default Gateway: For example, enter the default setting 192.168.1.1.
- Primary/Secondary DNS: Enter the DNS that are provided by your ISP.

**PPPoE:** Select this option when you use a direct connection via the ADSL modem. You should have a PPPoE account from your Internet service provider. Enter the user name and password in the following boxes. Please note that once the camera get an IP address from the ISP as starting up, it automatically sends a notification email to you. Therefore, when you select PPPoE as your connecting type, you have to set up the email configuration in next step.

☐ DHCP

☒ Static IP

IP:  .  .  .

Subnet Mask:  .  .  .

Default Gateway:  .  .  .

Primary DNS:  .  .  .

Secondary DNS:  .  .  .

☐ PPPoE

User Name:

Password:

< Prev  Cancel



**Step 9** If you would like to set up email alerts that you can receive in the future, enter your email information here. You can get this information from your internet service provider. You can also set this up at a later time. Click **Next**.

**Email Setting**

**SMTP Server Address:** Enter the mail server address. For example, mymail.com.

**Sender Email Address:** Enter the email address of the user who will send the email. For example, John@mymail.com.

**Authentication Mode:** If the mail server needs to login, please select SMTP.

**Sender User Name:** Enter the user name to login the mail server.

**Sender Password:** Enter the password to login the mail server.

**Receiver #1 Email Address:** Enter the first email address of the user who will receive the email.

**Receiver #2 Email Address:** Enter the second email address of the user who will receive the email.

**Email Setting**

SMTP Server Address:

Sender Email Address:

Authentication Mode: ☒ None ☐ SMTP

Sender User Name:

Sender Password:

Receiver #1 Email Address:

Receiver #2 Email Address:

< Prev **Next >** Cancel

**Step 10** Confirm your settings at the last window. If everything is correct, click **Apply** and the configuration is completed.

**IP Setting**

**DHCP:** Select this option when your network uses the DHCP server. When the camera starts up, it will be assigned an IP address from the DHCP server automatically.

**Static IP:** Select this option to assign the IP address for the camera directly. You can use IP Finder to obtain the related setting values.

- IP Address: For example, enter the default setting 192.168.1.240.
- Subnet Mask: For example, enter the default setting 255.255.255.0.
- Default Gateway: For example, enter the default setting 192.168.1.1.
- Primary/Secondary DNS: Enter the DNS that are provided by your ISP.

**PPPoE:** Select this option when you use a direct connection via the ADSL modem. You should have a PPPoE account from your Internet service provider. Enter the user name and password in the following boxes. Please note that once the camera get an IP address from the ISP as starting up, it automatically sends a notification email to you. Therefore, when you select PPPoE as your connecting type, you have to set up the email configuration in next step.

**IP Setting**

☒ **DHCP**

☐ Static IP

IP: 192 . 168 . 1 . 240

Subnet Mask: 255 . 255 . 255 . 0

Default Gateway: 192 . 168 . 1 . 1

Primary DNS: 192 . 168 . 1 . 1

Secondary DNS: . . . .

☐ PPPoE

User Name:

Password:

< Prev **Next >** Cancel

## Section 4

### Viewing Images

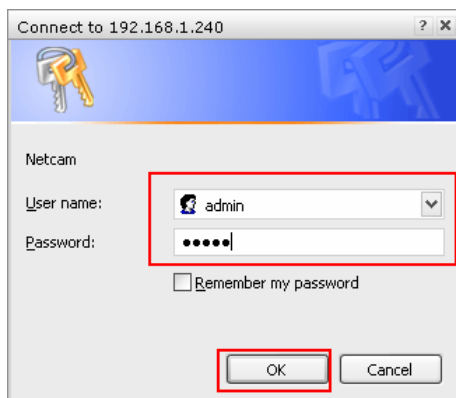
#### Method 1 --- Access from “Web Browser”

**Step 1** If you know the IP address of your network camera, you may open the Web Browser on your computer.

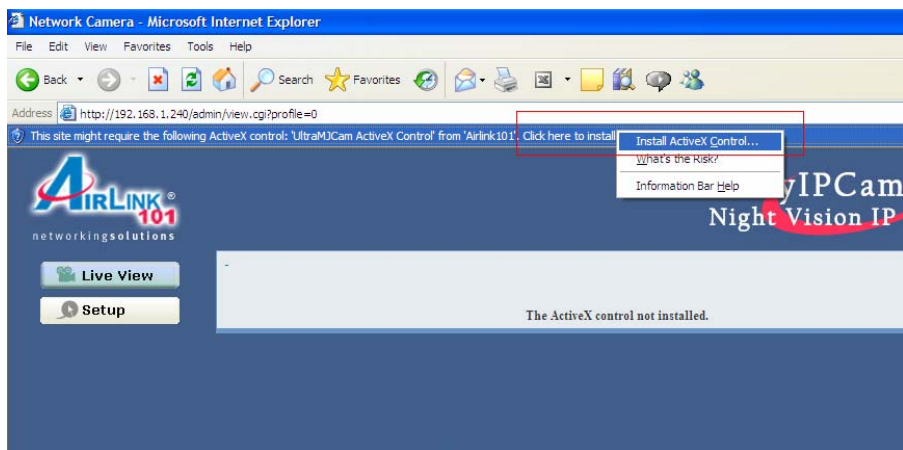
**Step 2** Type the IP address of your camera (the default IP is 192.168.1.240) in the Address bar, and then press [Enter].



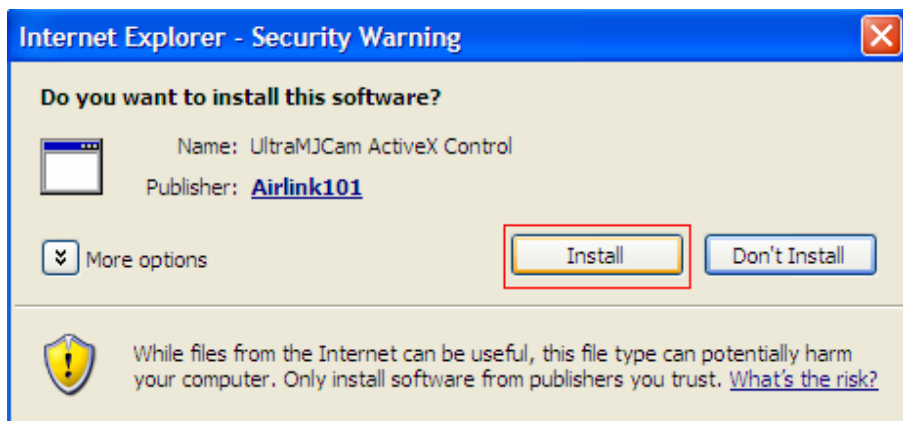
**Step 3** Enter “admin” for both the **User name** and **Password**, and click **OK**.



**Step 4** If it is the first time for your computer to access the Web based viewing page, you may be prompted to install the software of ActiveX Control. Click on the bar on top of the screen and click on **Install ActiveX Control**.



**Step 5** Click on **Install**, and then you may be able to view images.



**Step 6** To get a clear view of images, you may simply rotate the camera's lens clockwise or counter-clockwise to adjust the focus.

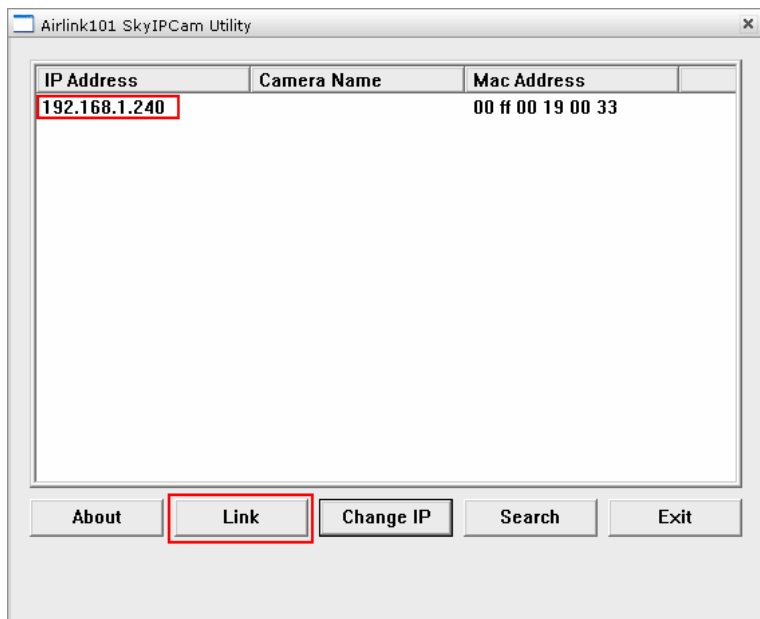


## Method 2 --- Access from “SkyIPCam Utility”

**Step 1** Go to **Start > (All) Programs > AirLink101 > AirLink101 SkyIPCam Utility**, and open the Airlink101 SkyIPCam Utility.



**Step 2** Select your camera from the list and click **Link**



**Step 3** Follow Step 3 to Step 6 mentioned in Method 1.

## Section 5

### Technical Support

E-mail: [support@airlink101.com](mailto:support@airlink101.com)

Toll Free: 1-888-746-3238

Website: [www.airlink101.com](http://www.airlink101.com)

\*Actual data throughput will vary. Network conditions and environmental factors lower actual data throughput rate. Specifications are subject to change without notice. All products and trademarks are the property of their respective owners. Copyright ©2008 AirLink101®