

## Portable 150Mbps Wireless N Travel Router / Access Point - USB Powered

AP150WN1X1U

- DE: Bedienungsanleitung - de.startech.com
- FR: Guide de l'utilisateur - fr.startech.com
- ES: Guía del usuario - es.startech.com
- IT: Guida per l'uso - it.startech.com
- NL: Gebruiksaanwijzing - nl.startech.com
- PT: Guia do usuário - pt.startech.com

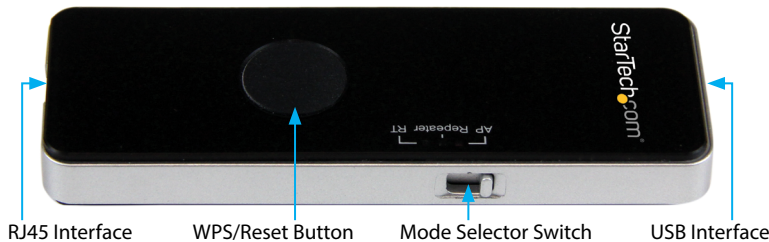
### Packaging Contents

- 1 x Travel Router
- 1 x USB Cable
- 1 x RJ45 Cable
- 1 x Carrying Pouch
- 1 x Instruction Manu

### System Requirements

- Available USB port (or wall charger) for power

### Product Overview



### LED Indicators

<b>WiFi</b>	Off: No Wi-Fi signal Solid: Wi-Fi signal broadcasting Flashing: Activity
<b>WLAN</b>	Off: No RJ45 connection detected Solid: RJ45 connection detected Flashing: Activity
<b>POWER</b>	Off: No power supplied to the device Solid: Connected to a USB power source

### WPS / Reset Button

WPS mode is disabled by default because it requires a secured wireless network to be used.

1. Once you have selected an operating mode and are connected to the web interface (details in the following sections of this manual), configure your desired wireless security protocol and key.

The screenshot shows the 'Wireless Setup' configuration page. The 'Network Name (SSID)' field is set to 'AP150WN1X1U'. The 'Security' dropdown menu is set to 'WPA-PSK/WPA2-PSK'. The 'KEY' field is set to '12345678'. There are 'Apply' and 'Cancel' buttons at the bottom.

2. Enable WPS mode.

The screenshot shows the 'WPS Config' page. The 'WPS Setting' dropdown menu is set to 'Disable'. There is an 'Apply' button at the bottom.

3. Once enabled, a single press of the button will activate it.

### Reset

In order to reset the device to factory defaults:

**Note:** All previously configured settings will be deleted after performing a reset

1. Ensure the AP is connected to a power source.
2. Press and hold the reset button for 8 seconds, then release.

### Installation

Please visit [www.startech.com/AP150WN1X1U](http://www.startech.com/AP150WN1X1U) for full operating instructions and specifications

### Default Settings

SSID: **AP150WN1X1U**

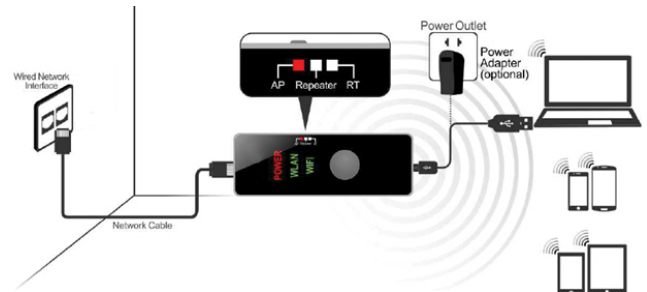
LAN IP Address: **192.168.16.254**

Username / Password: **admin / admin**

### Wireless Access Point

In AP mode, the AP150WN1X1U acts as a wireless transmitter which adapts a wired network signal into WiFi, so that other wireless devices like smartphones and tablets within range can share the wired connection.

**Widely used in:** Hotel rooms, school dormitories, etc.

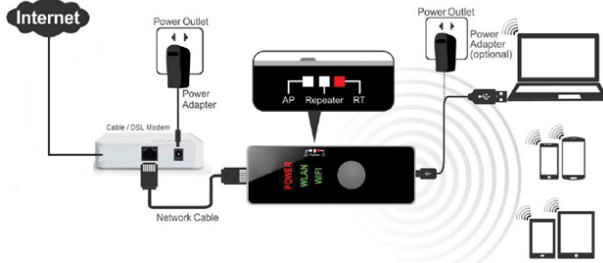


1. Adjust the switch on the device to AP Mode.
2. Connect one end of the included Ethernet cable to the RJ45 port of the AP, and the other to the hotel wall jack/switch.
3. Connect one end of the included USB cable to the USB port of the AP, and the other to a USB power source (e.g. laptop, USB wall charger, etc.).
4. Connect your wireless devices to the "AP150WN1X1U" SSID and open your web browser to access the Internet.

**NOTE:** If the hotel Internet connection requires a password or has a captive portal login, contact the front desk to obtain that information.

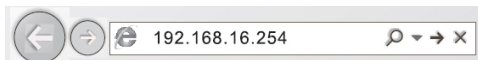
# Wireless Router

In RT mode, the AP150WN1X1U acts as a wireless router to create a wireless signal from a cable or DSL modem provided by an Internet Service Provider (ISP). This allows multiple wireless devices to use a wired connection that normally only allows one device to connect.

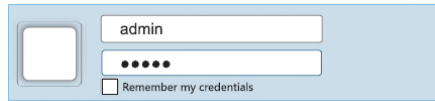


1. Adjust the switch on the device to RT Mode.
2. Connect one end of the included Ethernet cable to the RJ45 port of the AP, and the other to the cable / DSL Modem.
3. Connect one end of the included USB cable to the USB port of the AP, and the other to a USB power source (e.g. laptop, USB wall charger, etc.).
4. Connect a wireless device to the "AP150WN1X1U" SSID, which will open your default web browser to access the configuration page.

**Note:** If your web browser does not open automatically, open your preferred browser and enter the default IP address 192.168.16.254 into the address bar.

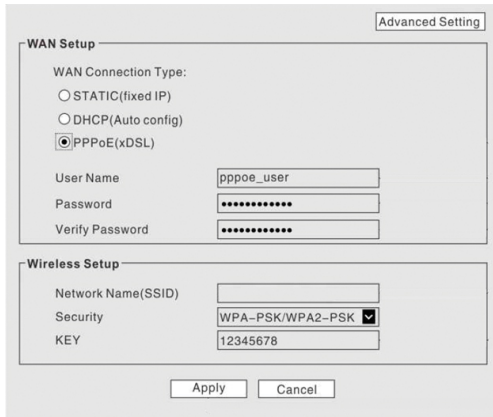


5. Enter the username / password when prompted, to access the configuration page (Default: admin / admin).



6. Configure your required WAN and Wireless settings:

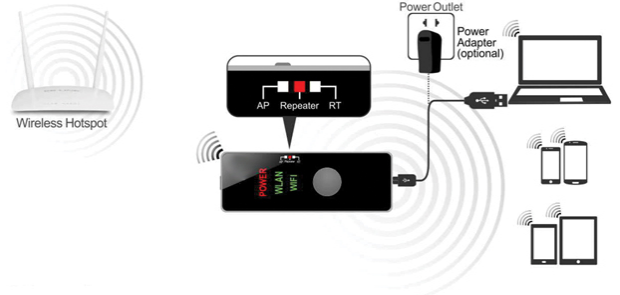
- a. WAN Setup: Enter in your ISP username / password (typically required for DSL, not cable) and connection type (contact your ISP for further information if required).
- b. Wireless Setup: Configure your desired SSID and Security type / Key, and click Apply when finished.



# WiFi Repeater

In Repeater mode, the AP150WN1X1U acts as a wireless card that can amplify, relay and extend the range of a weak wireless signal.

**Widely used in:** Large buildings, large rooms, etc.

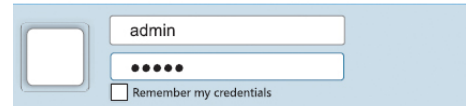


1. Adjust the switch on the device to Repeater Mode.
2. Connect one end of the included USB cable to the USB port of the AP, and the other to a USB power source (e.g. laptop, USB wall charger, etc.).
3. Connect a wireless device to the "AP150WN1X1U" SSID, which will open your default web browser to access the configuration page.

**Note:** If your web browser does not open automatically, open your preferred browser and enter the default IP address 192.168.16.254 into the address bar.

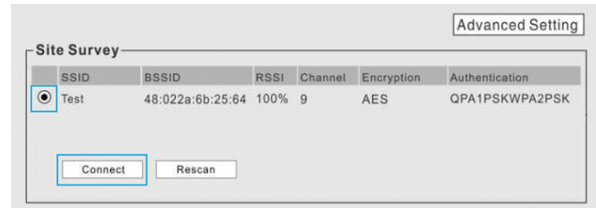


4. Enter the username / password when prompted, to access the configuration page (Default: admin / admin).



5. From the site survey list, choose the desired SSID you would like to extend / amplify and click Connect.

**Note:** If your desired SSID does not appear in the list, click the Rescan button.



### FCC Compliance Statement

This equipment has been tested and found to comply with the limits for a Class B digital device, pursuant to part 15 of the FCC Rules. These limits are designed to provide reasonable protection against harmful interference in a residential installation. This equipment generates, uses and can radiate radio frequency energy and, if not installed and used in accordance with the instructions, may cause harmful interference to radio communications. However, there is no guarantee that interference will not occur in a particular installation. If this equipment does cause harmful interference to radio or television reception, which can be determined by turning the equipment off and on, the user is encouraged to try to correct the interference by one or more of the following measures:

- Reorient or relocate the receiving antenna.
- Increase the separation between the equipment and receiver.
- Connect the equipment into an outlet on a circuit different from that to which the receiver is connected.
- Consult the dealer or an experienced radio/TV technician for help.

This device complies with part 15 of the FCC Rules. Operation is subject to the following two conditions: (1) This device may not cause harmful interference, and (2) this device must accept any interference received, including interference that may cause undesired operation. Changes or modifications not expressly approved by StarTech.com could void the user's authority to operate the equipment.

### Use of Trademarks, Registered Trademarks, and other Protected Names and Symbols

This manual may make reference to trademarks, registered trademarks, and other protected names and/or symbols of third-party companies not related in any way to StarTech.com. Where they occur these references are for illustrative purposes only and do not represent an endorsement of a product or service by StarTech.com, or an endorsement of the product(s) to which this manual applies by the third-party company in question. Regardless of any direct acknowledgement elsewhere in the body of this document, StarTech.com hereby acknowledges that all trademarks, registered trademarks, service marks, and other protected names and/or symbols contained in this manual and related documents are the property of their respective holders.

This Class B digital apparatus complies with Canadian ICES-003.

Cet appareil numérique de la classe [B] est conforme à la norme NMB-003 du Canada.

This device complies with Industry Canada licence-exempt RSS standard(s). Operation is subject to the following two conditions: (1) This device may not cause interference, and (2) This device must accept any interference, including interference that may cause undesired operation of the device.

Le présent appareil est conforme aux CNR d'Industrie Canada applicables aux appareils radio exempts de licence. L'exploitation est autorisée aux deux conditions suivantes: (1) l'appareil ne doit pas produire de brouillage, et (2) l'utilisateur de l'appareil doit accepter tout brouillage radioélectrique subi, même si le brouillage est susceptible d'en compromettre le fonctionnement.

IC Radiation Exposure Statement: This equipment complies with IC RSS-102 radiation exposure limit set forth for an uncontrolled environment. This equipment should be installed and operated with minimum distance 20cm between the radiator and your body.

Déclaration d'exposition à la radiation: Cet équipement respecte les limites d'exposition aux rayonnements IC définies pour un environnement non contrôlé. Cet équipement doit être installé et mis en marche à une distance minimale de 20 cm qui sépare l'élément rayonnant de votre corps. L'émetteur ne doit ni être utilisé avec une autre antenne ou un autre émetteur ni se trouver à leur proximité.

FCC ID: X2NBL-MIP02

IC: 11232A-AP150WN1X1U

### Technical Support

StarTech.com's lifetime technical support is an integral part of our commitment to provide industry-leading solutions. If you ever need help with your product, visit [www.startech.com/support](http://www.startech.com/support) and access our comprehensive selection of online tools, documentation, and downloads.

For the latest drivers/software, please visit [www.startech.com/downloads](http://www.startech.com/downloads)

### Warranty Information

This product is backed by a two year warranty.

In addition, StarTech.com warrants its products against defects in materials and workmanship for the periods noted, following the initial date of purchase. During this period, the products may be returned for repair, or replacement with equivalent products at our discretion. The warranty covers parts and labor costs only. StarTech.com does not warrant its products from defects or damages arising from misuse, abuse, alteration, or normal wear and tear.

### Limitation of Liability

In no event shall the liability of StarTech.com Ltd. and StarTech.com USA LLP (or their officers, directors, employees or agents) for any damages (whether direct or indirect, special, punitive, incidental, consequential, or otherwise), loss of profits, loss of business, or any pecuniary loss, arising out of or related to the use of the product exceed the actual price paid for the product. Some states do not allow the exclusion or limitation of incidental or consequential damages. If such laws apply, the limitations or exclusions contained in this statement may not apply to you.