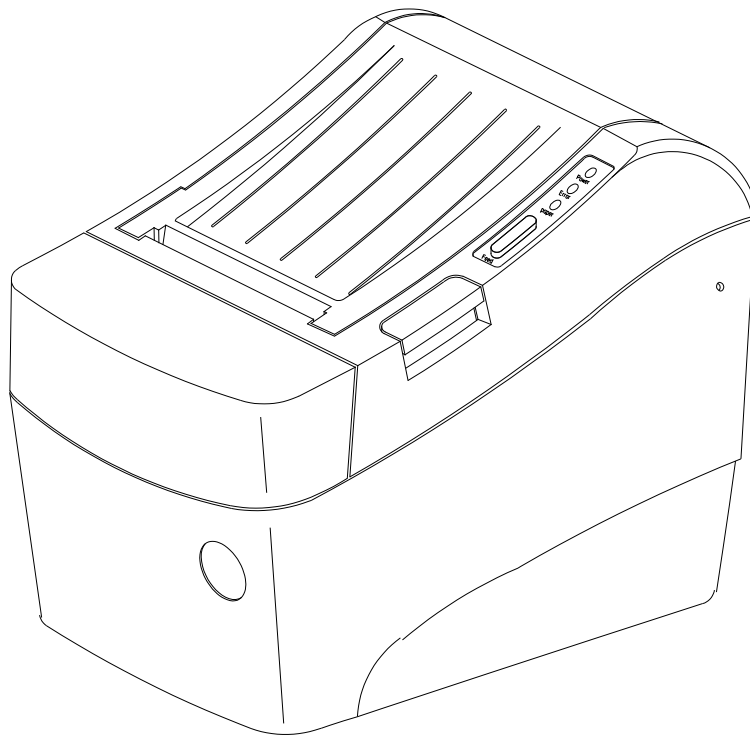


BIXOLON®

Windows Driver Manual
SRP-370

Thermal Printer
Rev. 2.06



<http://www.bixolon.com>

■ Table of Contents

1. Manual Information.....3

2. Operating System (OS) Environment.....3

3. Windows Driver Preparation3

4. Windows Driver Installation4

 4-1 Installing on Windows XP / Server 2003.....4

 4-1-1 Via Serial Port or Parallel Port.....4

 4-1-2 Via USB Port8

 4-2 Installing on Windows VISTA / Server 2008 / 7 / 8.....13

 4-2-1 Via Serial Port or Parallel Port.....13

 4-2-2 Via USB Port17

5. Windows Driver Settings.....20

 5-1 Paper.....20

 5-1-1 Paper Size.....21

 5-1-2 Paper Type.....22

 5-1-3 Copies.....22

 5-1-4 Color.....22

 5-2 Document Settings.....23

 5-2-1 Send Commands.....23

 5-2-2 Cash Drawer.....24

 5-2-3 Line Feed.....24

 5-2-4 Cut.....24

6. Windows Driver Specifications.....25

 6-1 Fonts.....25

 6-2 Special Functions.....26

 6-3 Barcodes.....28

 6-4 Two-Dimensional Barcodes.....28

7. Use of Windows Driver29

 7-1 Use of Visual Basic.....29

 7-1-1 Windows Driver Selection.....29

 7-1-2 Test Printing.....29

 7-1-3 Barcode Printing.....30

 7-1-4 Two-Dimensional Barcode Printing.....30

 7-2 Use of WordPad.....31

 7-2-1 WordPad Environment Settings.....31

 7-2-2 Text Printing.....31

 7-2-3 Barcode Printing.....32

 7-2-4 Two-Dimensional Barcode Printing.....33

1. Manual Information

This Windows Driver Installation Manual provides information on installation, detailed specifications, and usage of the printer's Windows Driver according to PC operating system (OS).

We at BIXOLON maintain ongoing efforts to enhance and upgrade the functions and quality of all our products. In following, product specifications and/or user manual content may be changed without prior notice.

2. Operating System (OS) Environment

The following operating systems are supported for usage.

- Microsoft Windows XP (32bit/64bit)
- Microsoft Windows Server 2003 (32bit/64bit)
- Microsoft Windows Vista (32bit/64bit)
- Microsoft Windows Server 2008 (32bit/64bit)
- Microsoft Windows Server 2008R2 (64bit)
- Microsoft Windows 7 (32bit/64bit)

3. Windows Driver Preparation

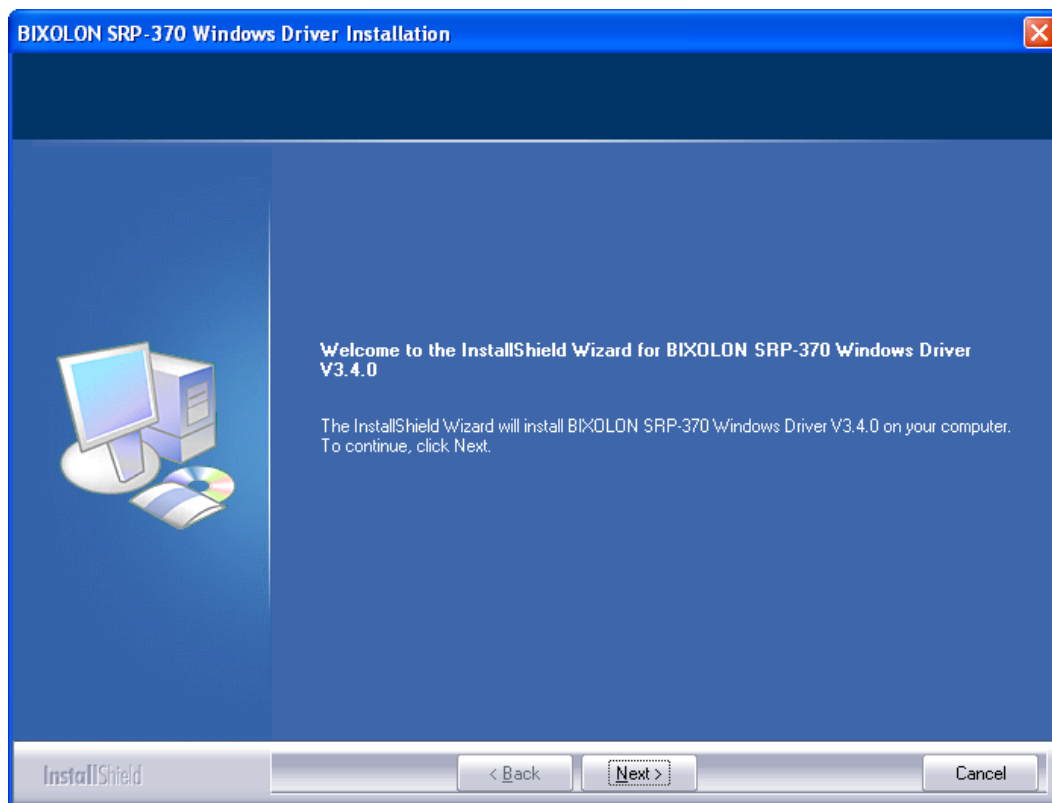
The Windows Driver is included in the enclosed CD, and Latest file versions can be downloaded from the BIXOLON website. (www.bixolon.com)

4. Windows Driver Installation

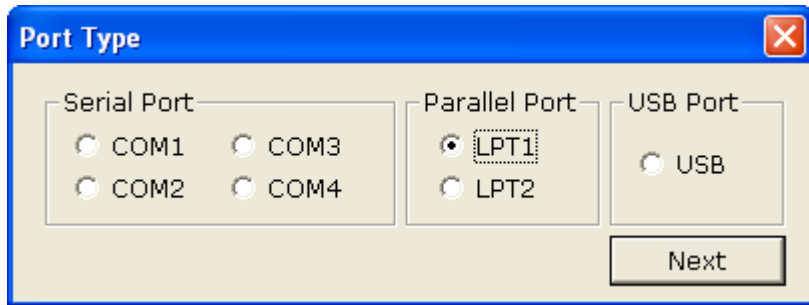
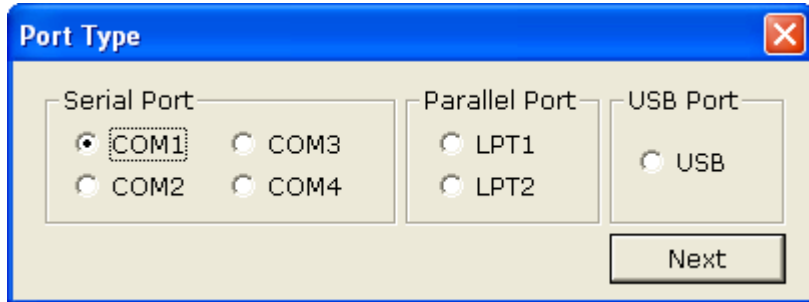
4-1 Installing on Windows XP / Server 2003

4-1-1 Via Serial Port or Parallel Port

- 1) Double-click the Windows Driver installation file.
- 2) Click "Next".



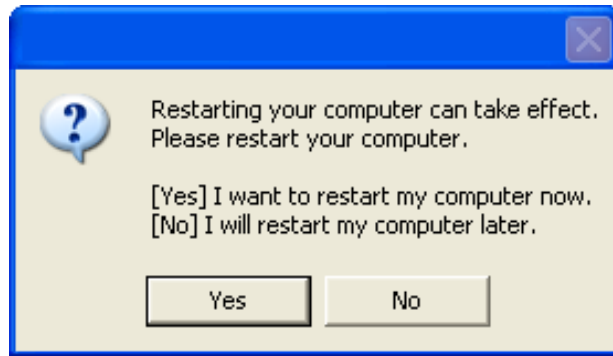
3) Select a COM port or LPT port to be used and then click “Next”



4) When the following message box appears, click “Continue Anyway”.



5) Click “Yes” to reboot the PC.



6) Open the printer properties window in the Windows OS.

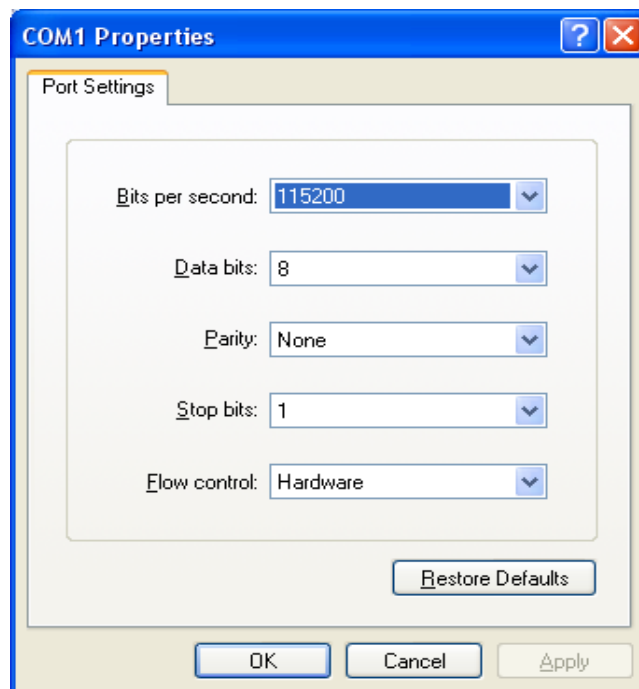
※ Control Panel – Printers and Faxes.

7) In the “Ports” tab, click “Configure Port...”

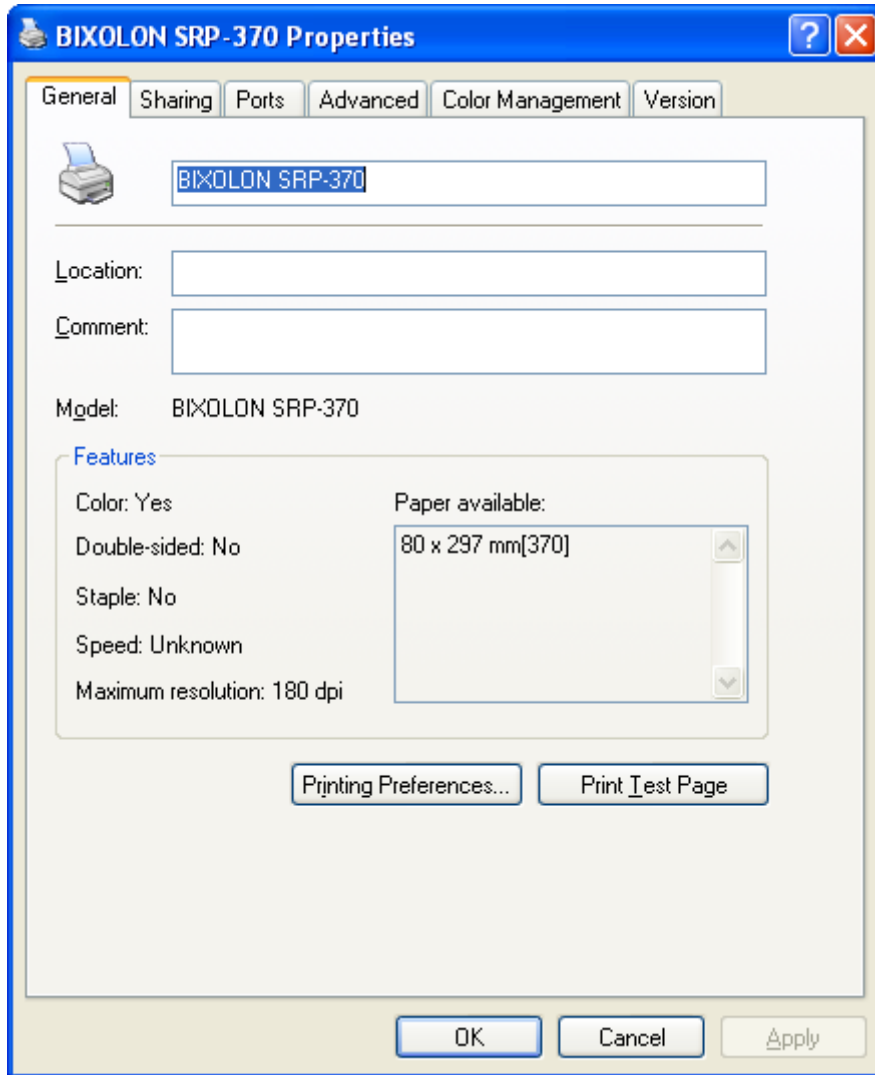
※ Pass this step if you are using a parallel port.

8) Match the communication settings to those of the printer. The communication settings of the printer can be performed by conducting a self-test.

※ Pass this step if you are using a parallel port.

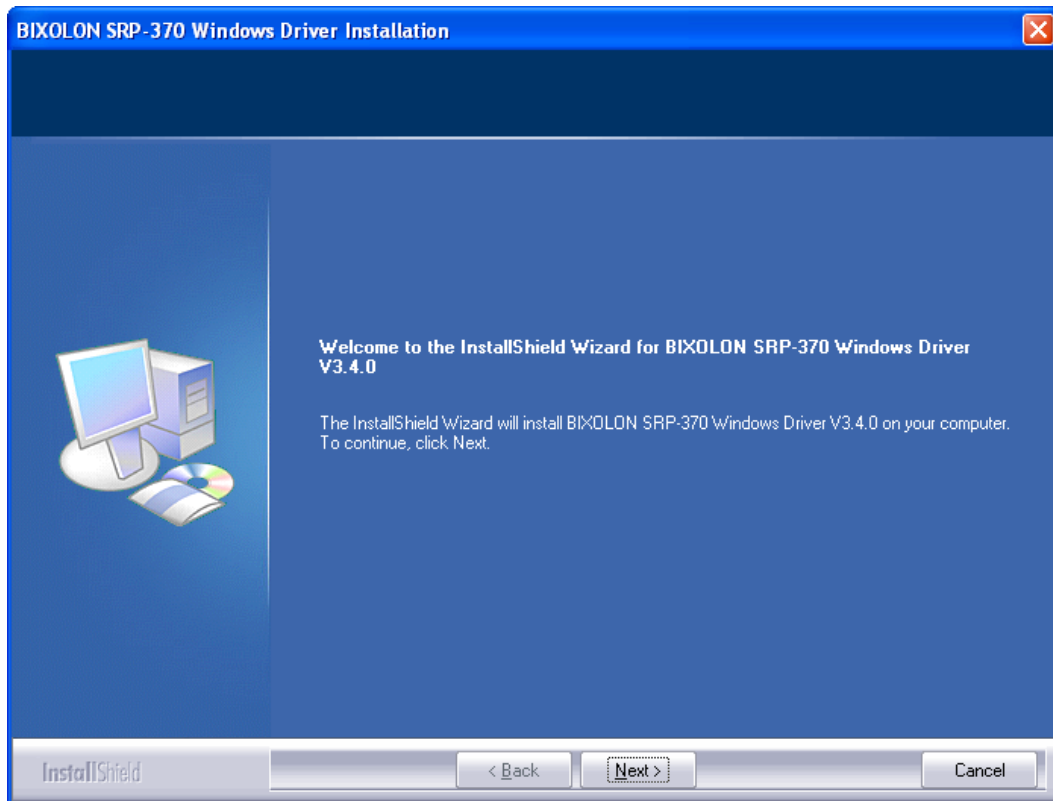


9) Click “Print Test Page” and check printing status. Proper installation of the driver is indicated if the test page is printed normally.

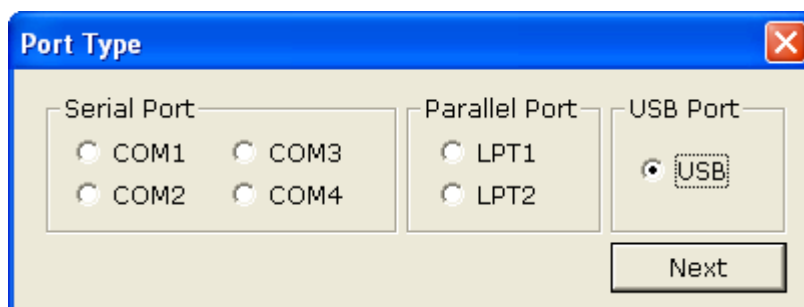


4-1-2 Via USB Port

- 1) Double-click the Windows Driver installation file.
- 2) Click "Next".



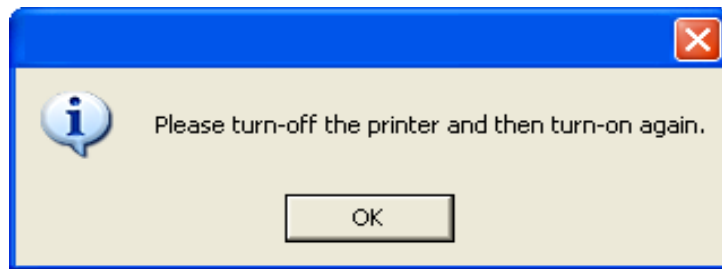
- 3) Select "USB" and then click "Next".



4) When the following message box appears, click “Continue Anyway”.



5) Click the “OK”.

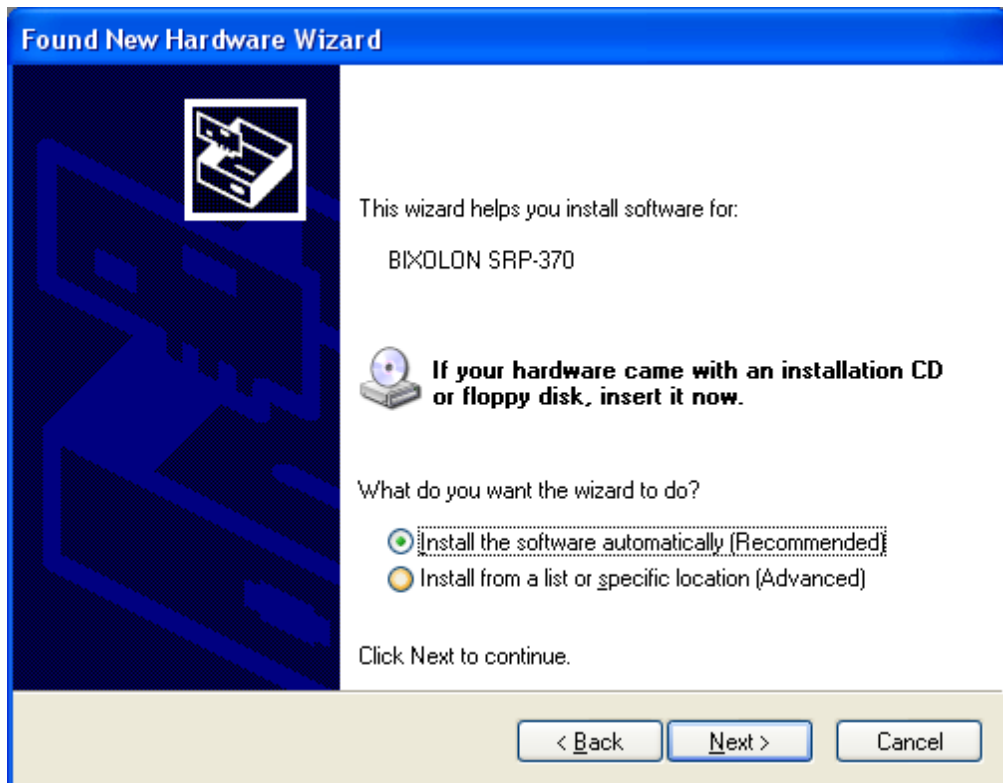


6) Turn off the printer and then turn it on.

7) When the New Hardware Wizard appears for the installation of the Windows Driver, select the option as shown below and click “Next”.



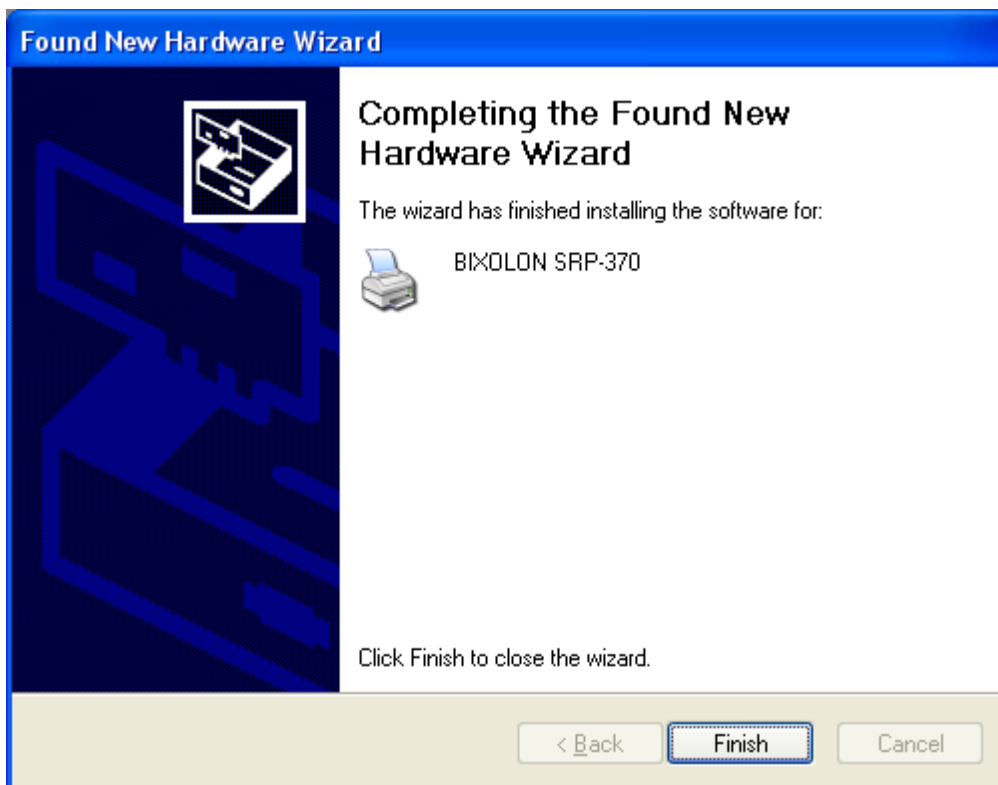
8) Click “Next”.



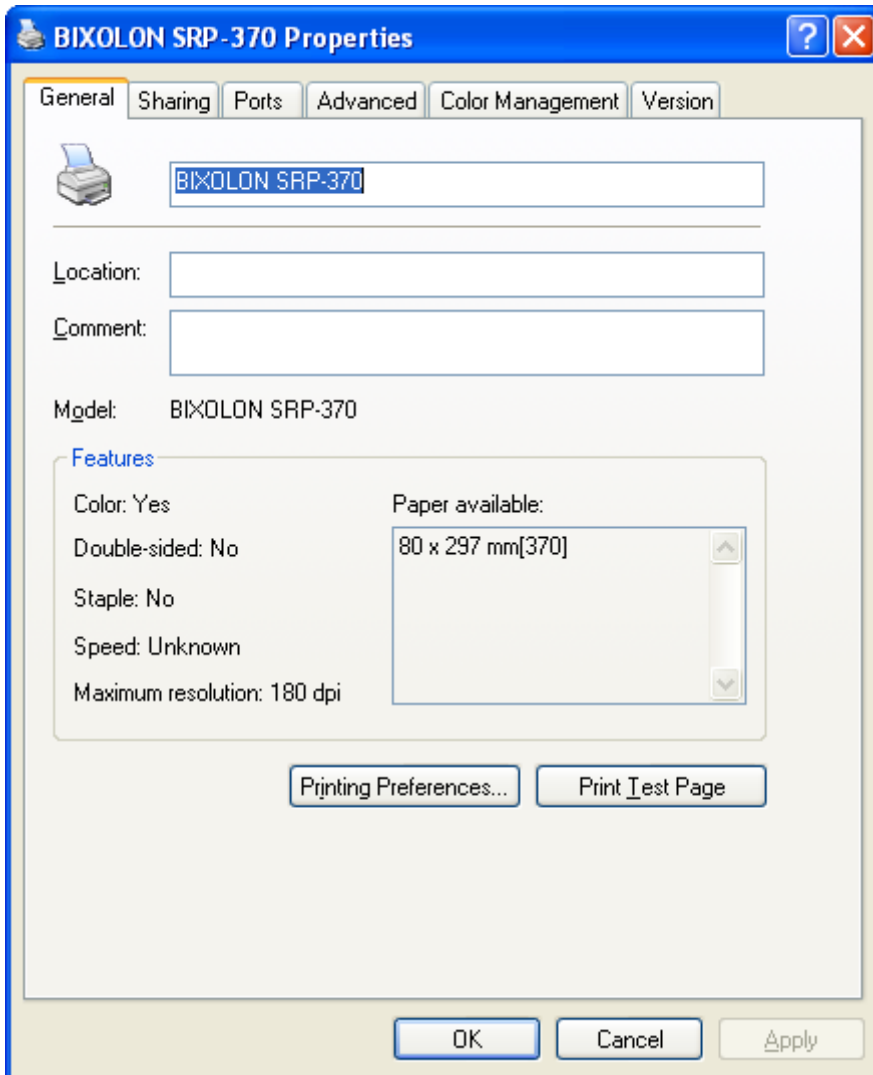
9) When the following message box appears, click “Continue Anyway”.



10) Click “Finish”.



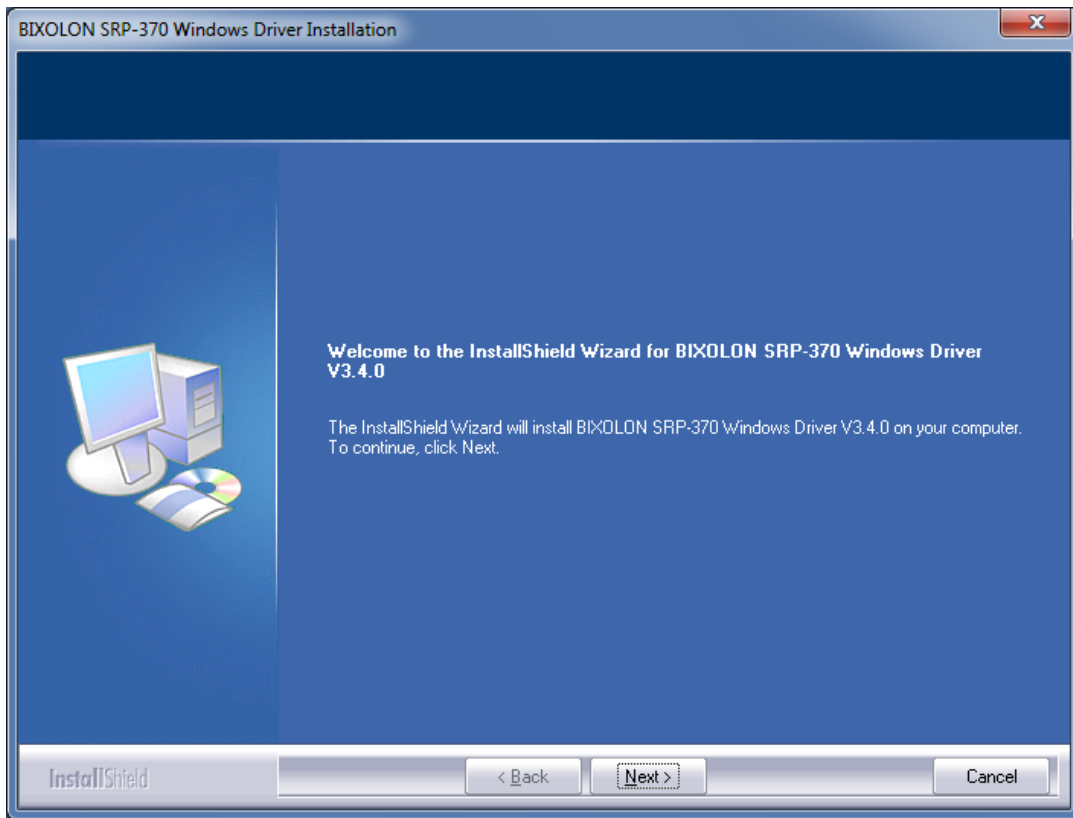
- 11) Open the printer properties window in the Windows OS.
 - ※ Control Panel – Printers and Faxes.
- 12) Click “Print Test Page” and check printing status. Proper installation of the driver is indicated if the test page is printed normally.



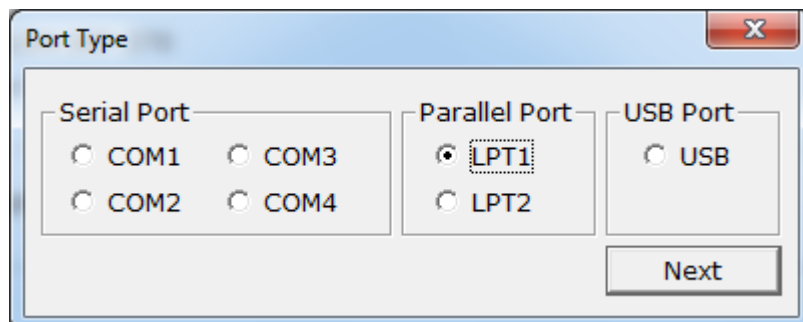
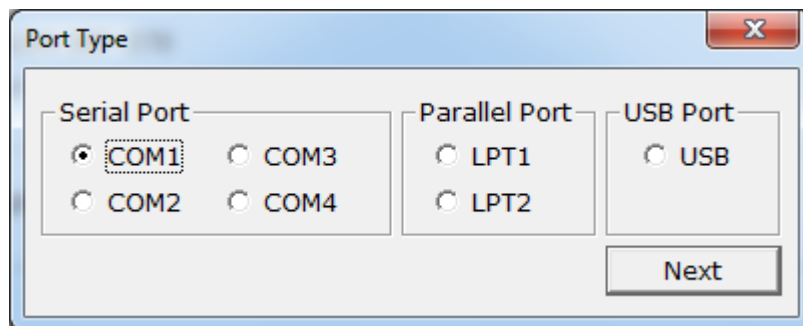
4-2 Installing on Windows VISTA / Server 2008 / 7 / 8

4-2-1 Via Serial Port or Parallel Port

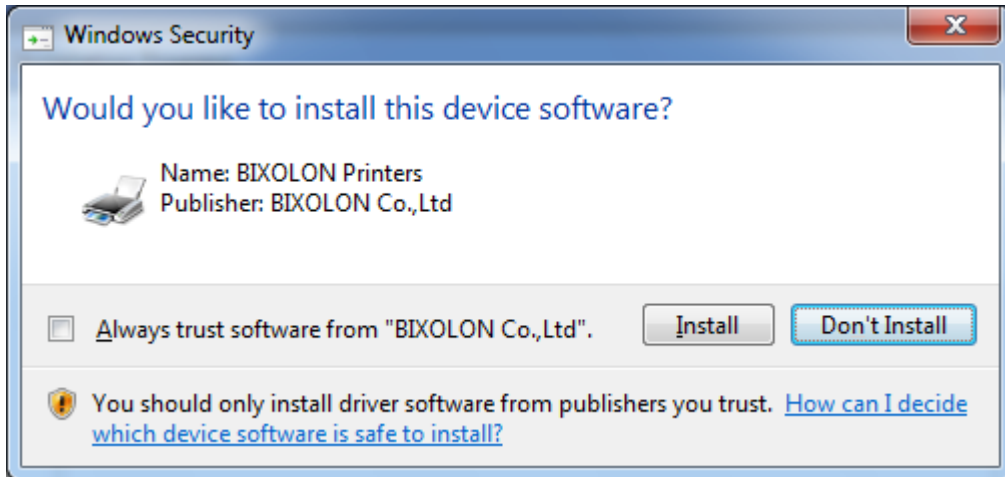
- 1) Double-click the Windows Driver installation file.
- 2) Click “Next”.



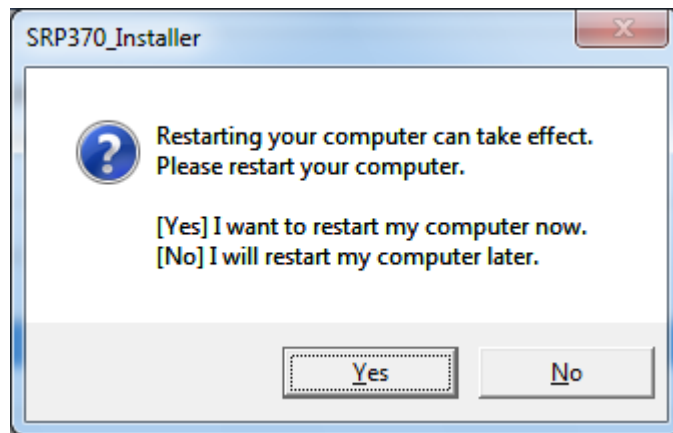
- 3) Select a COM port or LPT port to be used and then click “Next”.



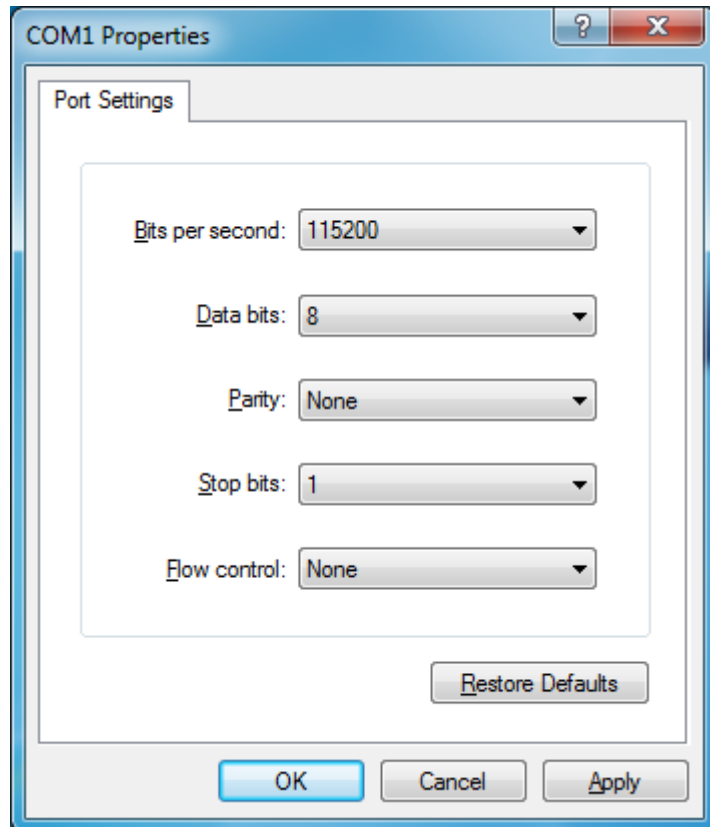
4) When the following message box appears, click "Install".



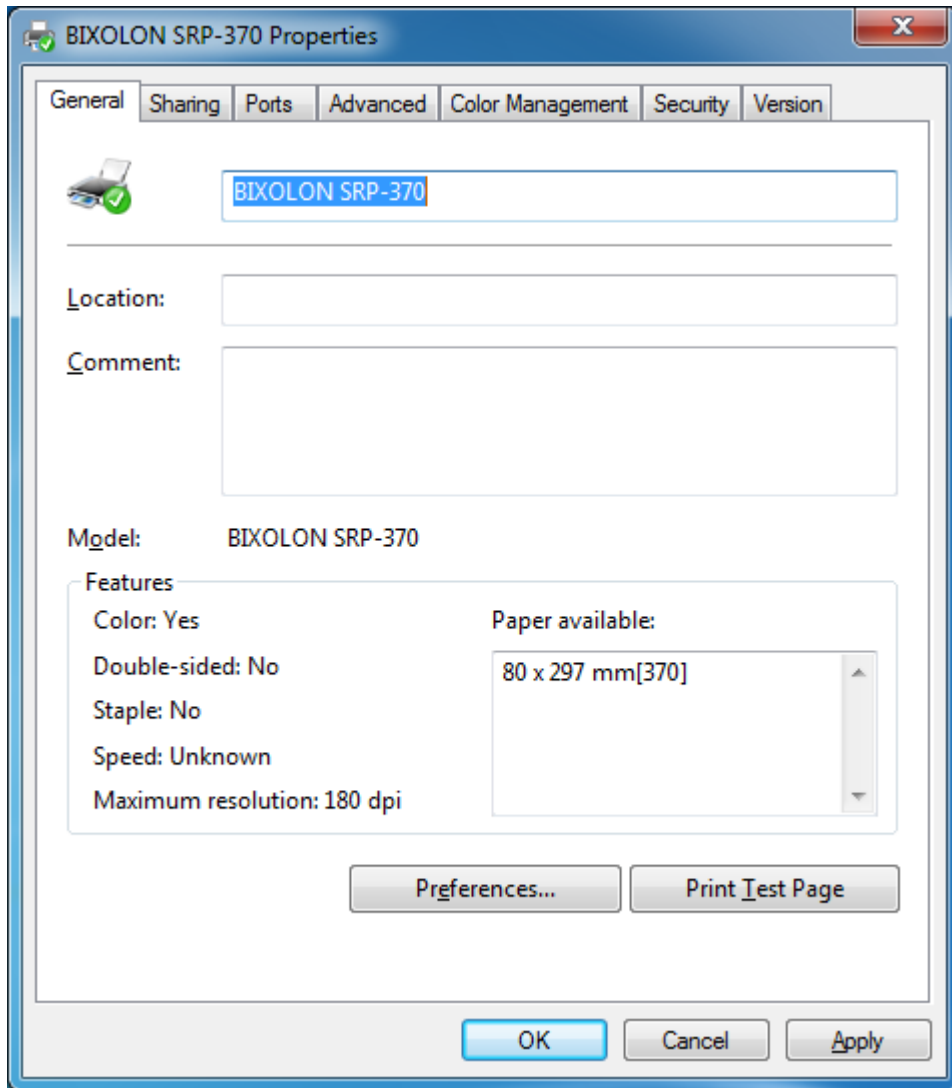
5) Click "Yes" to reboot the PC.



- 6) Open the printer properties window in the Windows OS.
 - ※ Control Panel – Hardware and Sound – Device and Printers.
- 7) In the “Ports” tab, click “Configure Port...”
 - ※ Pass this step if you are using a parallel port.
- 8) Match the communication settings to those of the printer. The communication settings of the printer can be performed by conducting a self-test.
 - ※ Pass this step if you are using a parallel port.

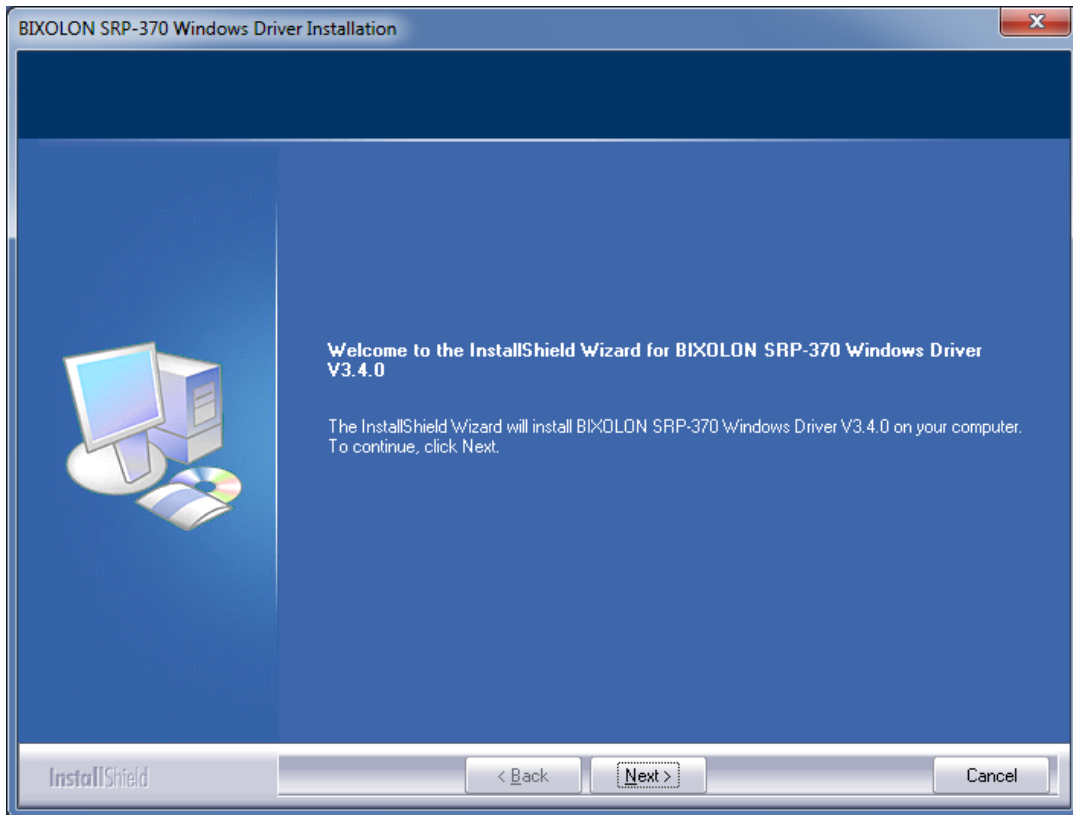


9) Click “Print Test Page” and check printing status. Proper installation of the driver is indicated if the test page is printed normally

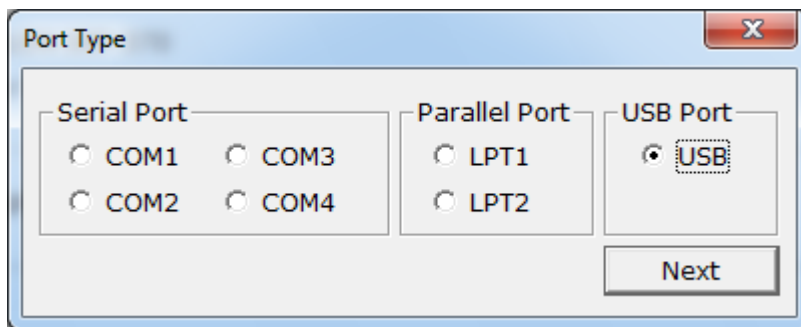


4-2-2 Via USB Port

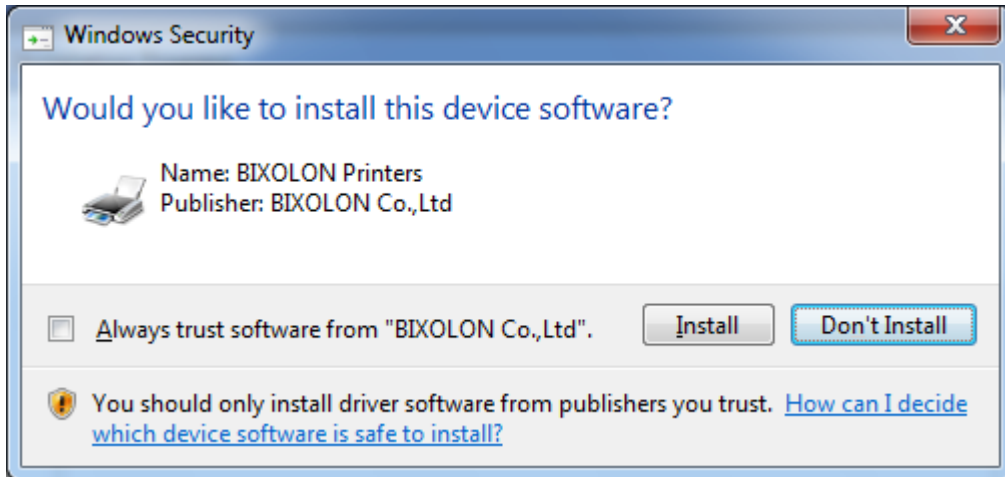
- 1) Double-click the Windows Driver installation file.
- 2) Click “Next”.



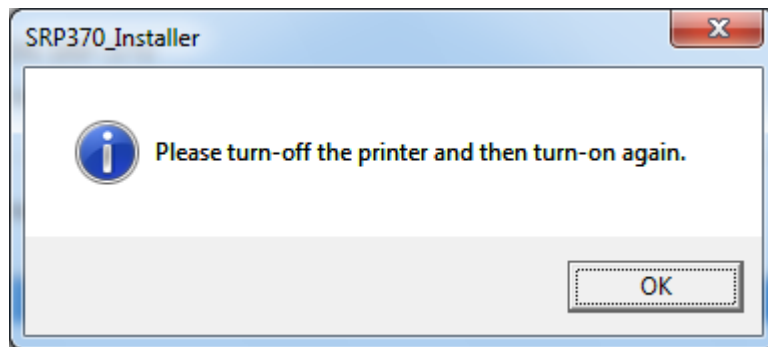
- 3) Select “USB” and then click “Next”.



4) When the following message box appears, click "Install".

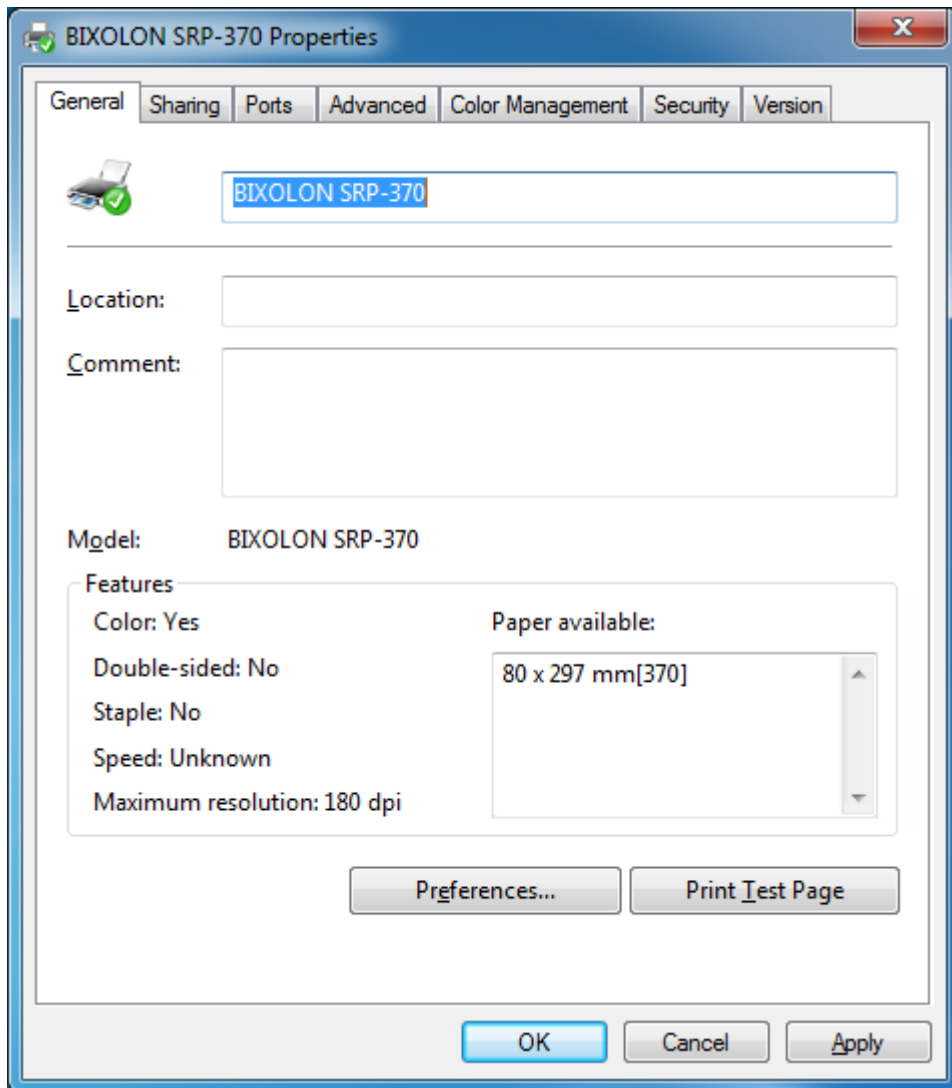


5) Click the "OK".



6) Turn off the printer and then turn it on. The printer driver will be installed automatically.

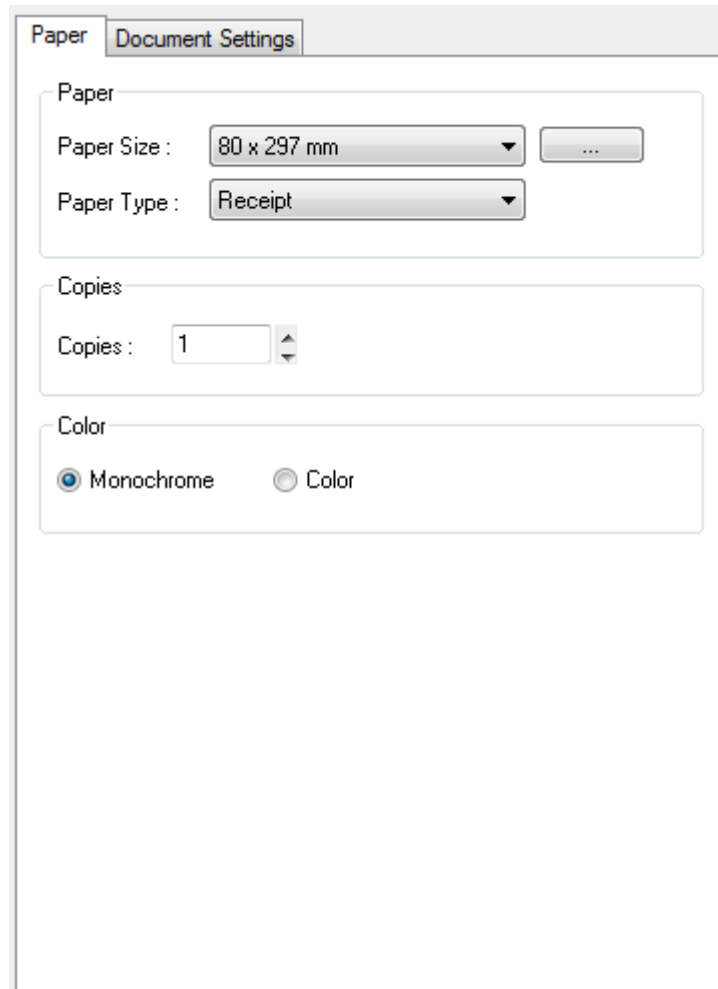
- 7) Open the printer properties window in the Windows OS.
 - ※ Control Panel – Hardware and Sound – Device and Printers.
- 8) Click “Print Test Page” and check printing status. Proper installation of the driver is indicated if the test page is printed normally.



5. Windows Driver Settings

The following functions can be configured after installing the Windows driver.

5-1 Paper



- 1) Open the Printer Properties window for the corresponding OS.
- 2) Click the "Preferences" button in the "General" tab.
- 3) Click "Paper" Tab.

5-1-1 Paper Size

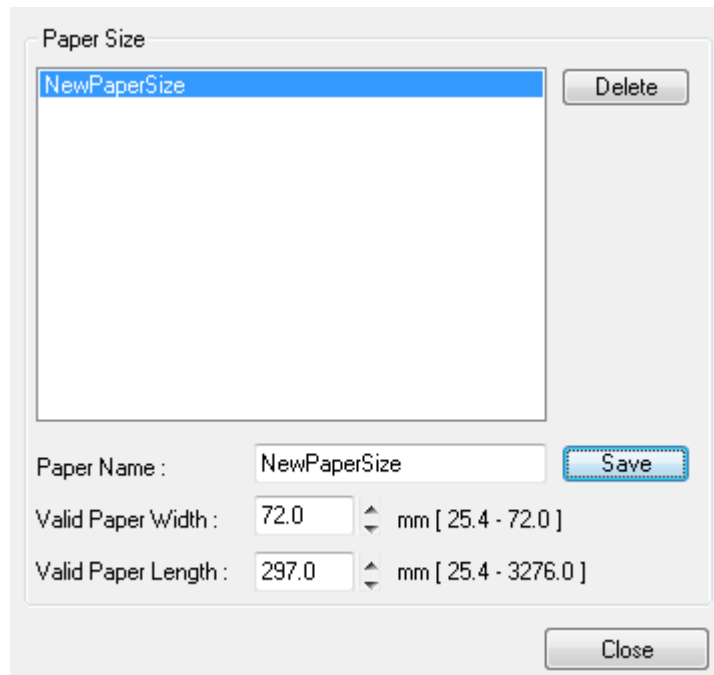
Paper size of 80 x 297 mm is selected by default, and the following sizes can be selected.

80 × 297 mm

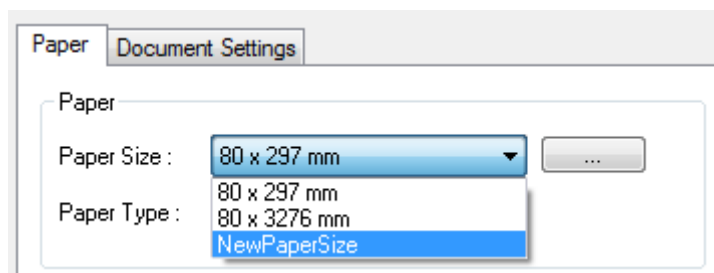
80 × 3276 mm

If a custom paper size is required, click the “...” button to add or update a custom paper size and then, click the “Save” button after specifying the paper width/length and a paper name. If the specified paper name already exists on the system, you can update the paper width/length.

Valid Paper Width : 25.4 mm ~ 72.0 mm
Valid Paper Length : 25.4 mm ~ 3276 mm



You can choose the new paper size on the “Paper Size” combo-box after adding a paper size.



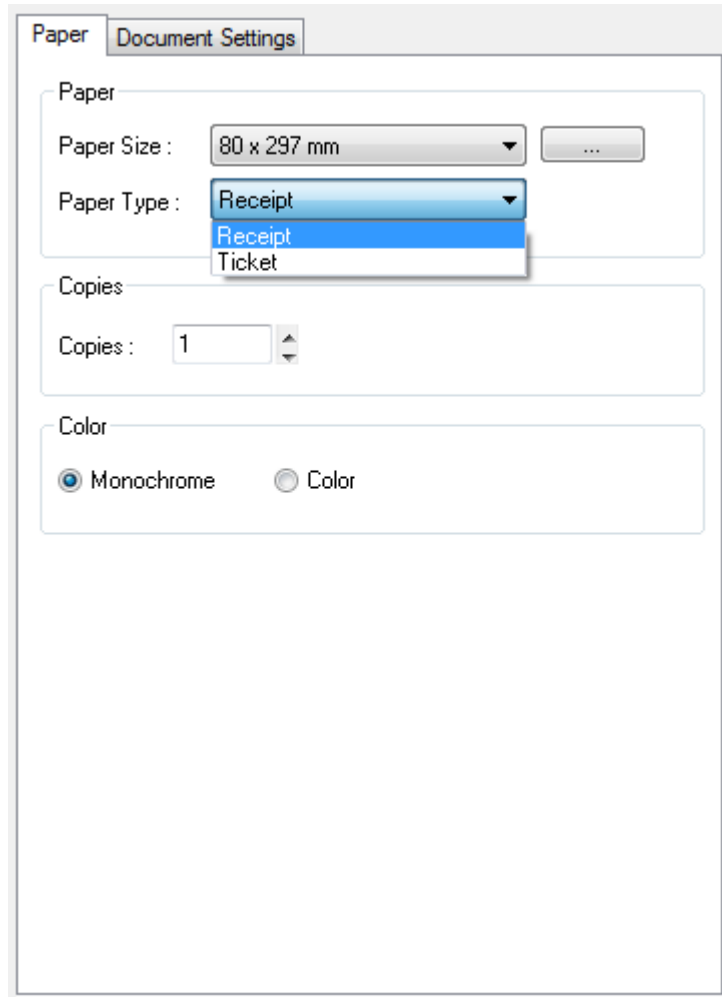
Delete button: Deletes the paper size selected in the list.
Save button: Adds a new paper size or update the paper size selected in the list if the paper name already exists on the system.

5-1-2 Paper Type

You can choose Receipt or Ticket as paper types. Receipt allows flexible paper length according to the data length. Ticket print in fixed length even the print data is short. Default setting is “Receipt”.

Receipt : Receipt allows flexible paper length according to the data length.

Ticket : Ticket print in fixed length even the print data is short.



5-1-3 Copies

Copies are printed by specifying the copy count. The copy count is set to 1 by default. Set this value bigger than 1 to set the number of copies to print. The value should be within the range of 1 to 255.

5-1-4 Color

The Color is set to Monochrome by default. Select Color if you are using two color thermal paper (i.e. Red & Black).

5-2 Document Settings

- 1) Open the Printer Properties window for the corresponding OS.
- 2) Click the “Preferences” or “Printing Preferences” button in the “General” tab.
- 3) Click “Document Settings” Tab.

5-2-1 Send Commands

The Windows driver serves to receive the content for print from an application and send it to the printer. The “Send Commands” function allows for the addition of desired commands at the start or end of the print content.

Start Doc : Addition of command at the beginning of the document.
 Start Page : Addition of command at the beginning of the page.
 End Page : Addition of command at the end of the page.
 End Doc : Addition of command at the end of the document.

For more information on the hexadecimals that can be entered in “Start Doc”, “Start Page”, “End Page” and “End Doc”, refer to the Control Commands Manual.

5-2-2 Cash Drawer

To open a cash-drawer before printing, tick “Open before printing #1” or “Open before printing #2” in the “Cash Drawer” and then click “OK”.

To open a cash-drawer after printing, tick “Open after printing #1” or “Open after printing #2” in the “Cash Drawer” and then click “OK”.

5-2-3 Line Feed

Enter the number between 0 and 99 for adding blank lines at the end of printing.

5-2-4 Cut

Paper can be cut at the end of each page or each document (job).

Page/Job : No Cut / No Cut	:	Paper is not cut after printing.
Page/Job : No Cut / Partial Cut	:	Paper is cut at the end of each document (Job).
Page/Job : Partial Cut / Partial Cut	:	Paper is cut at the end of each page.

6. Windows Driver Specifications

6-1 Fonts

The Windows Driver of the printer supports the fonts listed below.

Printing is done at faster speed when using the fonts below as opposed to the Windows fonts of the OS.

Printer Fonts			Character Size (dot)	Sizes (point)
FontA1x1	FontA1x1[Ext.]	FontA1x1[255]	FontA1x1(12x24)	9.5
FontA1x2	FontA1x2[Ext.]	FontA1x2[255]	FontA1x2(12x48)	19
FontA2x1	FontA2x1[Ext.]	FontA2x1[255]	FontA2x1(24x24)	9.5
FontA2x2	FontA2x2[Ext.]	FontA2x2[255]	FontA2x2(24x48)	19
FontA2x4	FontA2x4[Ext.]	FontA2x4[255]	FontA2x4(24x96)	38.5
FontA4x2	FontA4x2[Ext.]	FontA4x2[255]	FontA4x2(48x48)	19
FontA4x4	FontA4x4[Ext.]	FontA4x4[255]	FontA4x4(48x96)	38.5
FontA4x8	FontA4x8[Ext.]	FontA4x8[255]	FontA4x8(48x192)	77
FontA8x4	FontA8x4[Ext.]	FontA8x4[255]	FontA8x4(96x96)	38.5
FontA8x8	FontA8x8[Ext.]	FontA8x8[255]	FontA8x8(96x192)	77
FontB1x1	FontB1x1[Ext.]	FontB1x1[255]	FontB1x1(9x17)	7
FontB1x2	FontB1x2[Ext.]	FontB1x2[255]	FontB1x2(9x34)	13.5
FontB2x1	FontB2x1[Ext.]	FontB2x1[255]	FontB2x1(18x17)	7
FontB2x2	FontB2x2[Ext.]	FontB2x2[255]	FontB2x2(18x34)	13.5
FontB2x4	FontB2x4[Ext.]	FontB2x4[255]	FontB2x4(18x68)	27
FontB4x2	FontB4x2[Ext.]	FontB4x2[255]	FontB4x2(36x34)	13.5
FontB4x4	FontB4x4[Ext.]	FontB4x4[255]	FontB4x4(36x68)	27
FontB4x8	FontB4x8[Ext.]	FontB4x8[255]	FontB4x8(36x136)	54.5
FontB8x4	FontB8x4[Ext.]	FontB8x4[255]	FontB8x4(72x68)	27
FontB8x8	FontB8x8[Ext.]	FontB8x8[255]	FontB8x8(72x136)	54.5

Printer Fonts are defined as follows.

1) FontA1x2

- ANSI Character code support (Code Page 1252)
- Character size (dot): 12 x 48 (double height)
- Sizes (point): 19

2) FontA1x2[Ext.]

- IBM expansion Character code support (Code Page 437)
- Character size (dot): 12 x 48 (double height)
- Sizes (point): 19

3) FontA1x2[255]

- Buyer exclusive code support (User Code Page)
- Character size (dot): 12 x 48 (double height)
- Sizes (point): 19

6-2 Special Functions

The Windows Driver supports the special functions indicated below. These special functions are available when using the characters after the “FontControl” font is selected.

This function is not an ordinary character printing function. Take special care.

Character	Special Function
5	Prints HT (0 x 09)
6	Prints LF (0 x 0A)
7	Prints CR (0 x 0D)
a	Open Drawer 2 (50ms drive pulse width)
b	Open Drawer 2 (100ms drive pulse width)
c	Open Drawer 2 (150ms drive pulse width)
d	Open Drawer 2 (200ms drive pulse width)
e	Open Drawer 2 (250ms drive pulse width)
f	Open Drawer 2 (50ms drive pulse width) without feeding
g	Cut Receipt (partial cut) without paper feeding
i	Prints the NV graphic saved in the 00 address (Double Size)
j	Prints the NV graphic saved in the 01 address (Double Size)
k	Prints the NV graphic saved in the 02 address (Double Size)
l	Prints the NV graphic saved in the 03 address (Double Size)
m	Prints the NV graphic saved in the 04 address (Double Size)
p	Does not add HRI characters to the barcode
q	Adds HRI characters in Font A above the barcode
r	Adds HRI characters in Font A below the barcode
s	Adds HRI characters in Font B above the barcode
t	Adds HRI characters in Font B below the barcode
w	Aligns text to the left
x	Aligns text to the center
y	Aligns text to the right
A	Open Drawer 1 (50ms drive pulse width)
B	Open Drawer 1 (100ms drive pulse width)
C	Open Drawer 1 (150ms drive pulse width)
D	Open Drawer 1 (200ms drive pulse width)
E	Open Drawer 1 (250ms drive pulse width)
F	Open Drawer 1 (50ms drive pulse width) without feeding
G	Prints 1 st NV bit image
H	Prints 2 nd NV bit image
I	Prints 3 rd NV bit image
J	Prints 4 th NV bit image
K	Prints 5 th NV bit image
P	Cut Receipt (partial cut)
R	Prints the NV graphic saved in the 00 address
S	Prints the NV graphic saved in the 01 address
T	Prints the NV graphic saved in the 02 address
U	Prints the NV graphic saved in the 03 address
V	Prints the NV graphic saved in the 04 address

Character	Special Function
[Prints 1 st NV bit image (Double Size)
]	Prints 2 nd NV bit image (Double Size)
^	Prints 3 rd NV bit image (Double Size)
_	Prints 4 th NV bit image (Double Size)
`	Prints 5 th NV bit image (Double Size)

1) Sample Use

If the "FontControl" font is selected and 6 is entered, the "LF" (Line Feeding) operation is activated. (does not entail the printing of the character "6")

2) "FontControl" Font Function

Printer Font for Special Function	Function	Size (point/dot)
FontControl	Justification (Left/Center/Right) Output HT, Output LF, Output CR Barcode Printing Print NV Graphic Data	(9.5 / 12x24)

6-3 Barcodes

The Windows Driver supports the barcodes indicated below. This function is available when entering barcode data after selecting “Printer Font Name”. In addition, the “FontControl” font can be used to add HRI characters.

Printer Font Name	Size (Point)	Supported Characters
Codabar	20/40/60/80	Numeric: 0~9 Symbols: \$, +, -, ., /, : Letters: A~D
Code39	20/40/60/80	Numeric: 0~9 Symbols: \$, +, -, ., / Letters: A~Z
JAN13 (EAN)	20/40/60/80	Numeric: 0~9
JAN8 (EAN)	20/40/60/80	Numeric: 0~9
ITF	20/40/60/80	Numeric: 0~9
UPC-A	20/40/60/80	Numeric: 0~9
UPC-E	20/40/60/80	Numeric: 0~9
Code93	20/40/60/80	ASCII CODE: 0~127
Code128	20/40/60/80	ASCII CODE: 0~127

1) Sample Use

Select “Code39” and Size “20”, and then enter “1234”.
The barcode corresponding to “1234” is printed.

2) When Using Code128

Select “Code128” and Size “20”, and then enter “{B1234”.
The barcode corresponding to “1234” is printed.

When using “Code128”, characters, such as “{A”, “{B”, “{C”, should be included before the input data.

6-4 Two-Dimensional Barcodes

The Windows Driver supports the following two-dimensional barcodes.

- PDF417
- QR Code

Usage is identical to that for the barcodes listed in 6-3.

7. Use of Windows Driver

7-1 Use of Visual Basic

This section contains example codes to control the printer using Windows driver with Visual Basic. Sample codes contained in the CD.

7-1-1 Windows Driver Selection

The following code is an example of the selection of the “BIXOLON SRP-370” Windows Driver.

```
For Each prnPrinter In Printers
    If prnPrinter.DeviceName = "BIXOLON SRP-370" Then
        Set Printer = prnPrinter
        Exit For
    End If
Next
```

7-1-2 Test Printing

The following code is an example of the printing of Arial Test via the Windows font, and FontA1x1Test via the printer font.

```
'Print in Windows font
Printer.FontSize = 9
Printer.FontName = "Arial"
Printer.Print "Arial Test"

'Print in printer font
Printer.FontSize = 9.5
Printer.FontName = "FontA1x1"
Printer.Print "FontA1x1Test"

Printer.EndDoc
```

7-1-3 Barcode Printing

The following code is an example of the printing of the JAN8 (EAN) barcode.

```
'Print Bar Code.  
Printer.FontSize = 20  
  
Printer.FontName = "JAN8 (EAN)"  
Printer.Print "1234567"  
  
Printer.EndDoc
```

7-1-4 Two-Dimensional Barcode Printing

The following code is an example of the printing of the PDF417 two-dimensional barcode.

```
'Print Two-dimensional Codes.  
Printer.FontSize = 9.5  
  
Printer.FontName = "PDF417"  
Printer.Print "Print Test PDF417"  
  
Printer.EndDoc
```

7-2 Use of WordPad

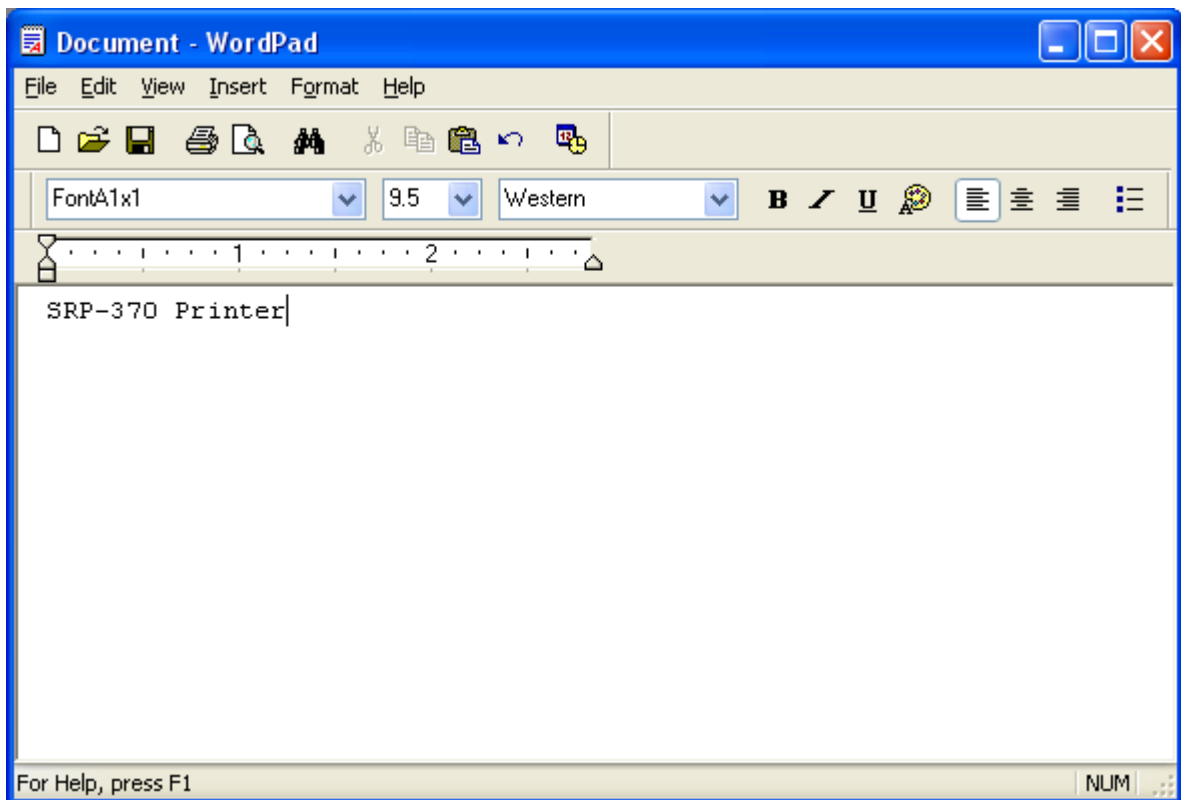
7-2-1 WordPad Environment Settings

After running WordPad and setting the following conditions, conduct a test.

- Select Printer
After selecting “Print” from the “File” menu, select the printer (BIXOLON SRP-370).
- Select Paper Size, Orientation, and Margins
After selecting “Page Setup” from the “File” menu, select the paper size, orientation, and margins.

7-2-2 Text Printing

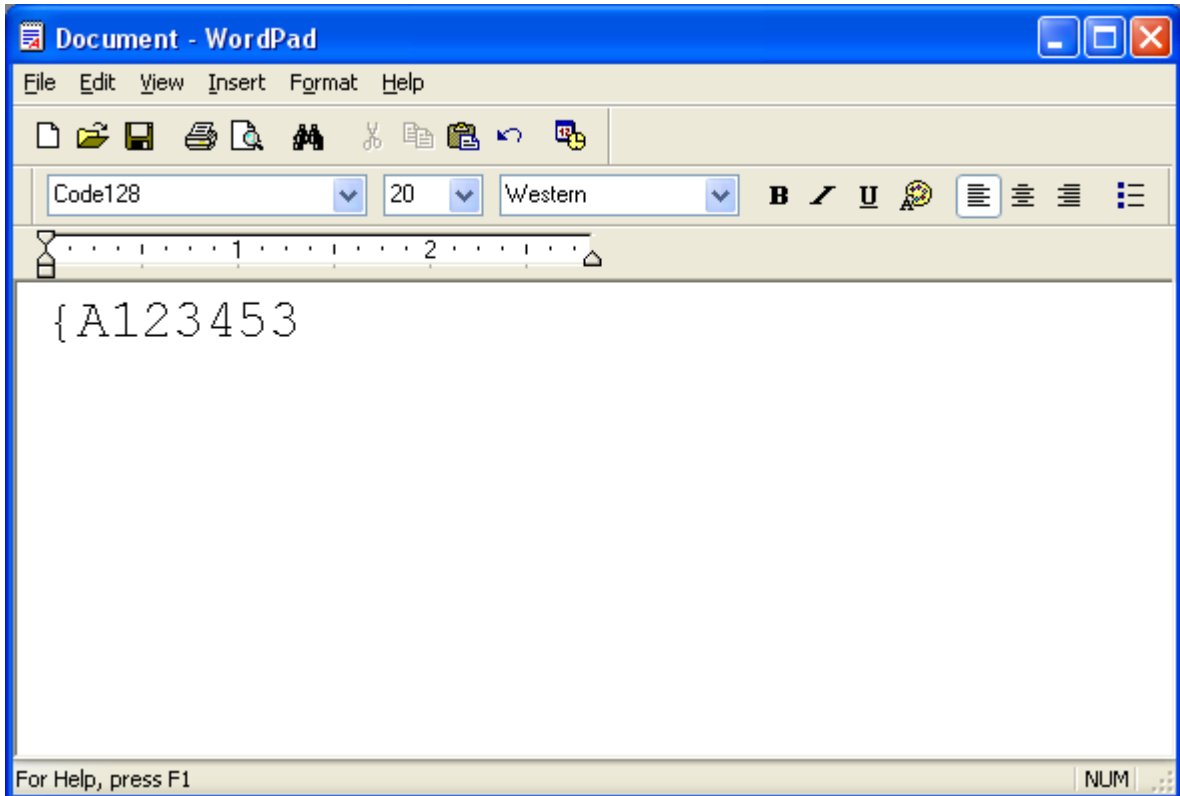
Use the Windows Driver of the printer to run a test.



- 1) Select the desired font from the Font menu (FontA1x1).
- 2) Select the desired font size (9.5).
- 3) Enter the text to be printed in WordPad.
- 4) Click the Print button in the toolbar to print.

7-2-3 Barcode Printing

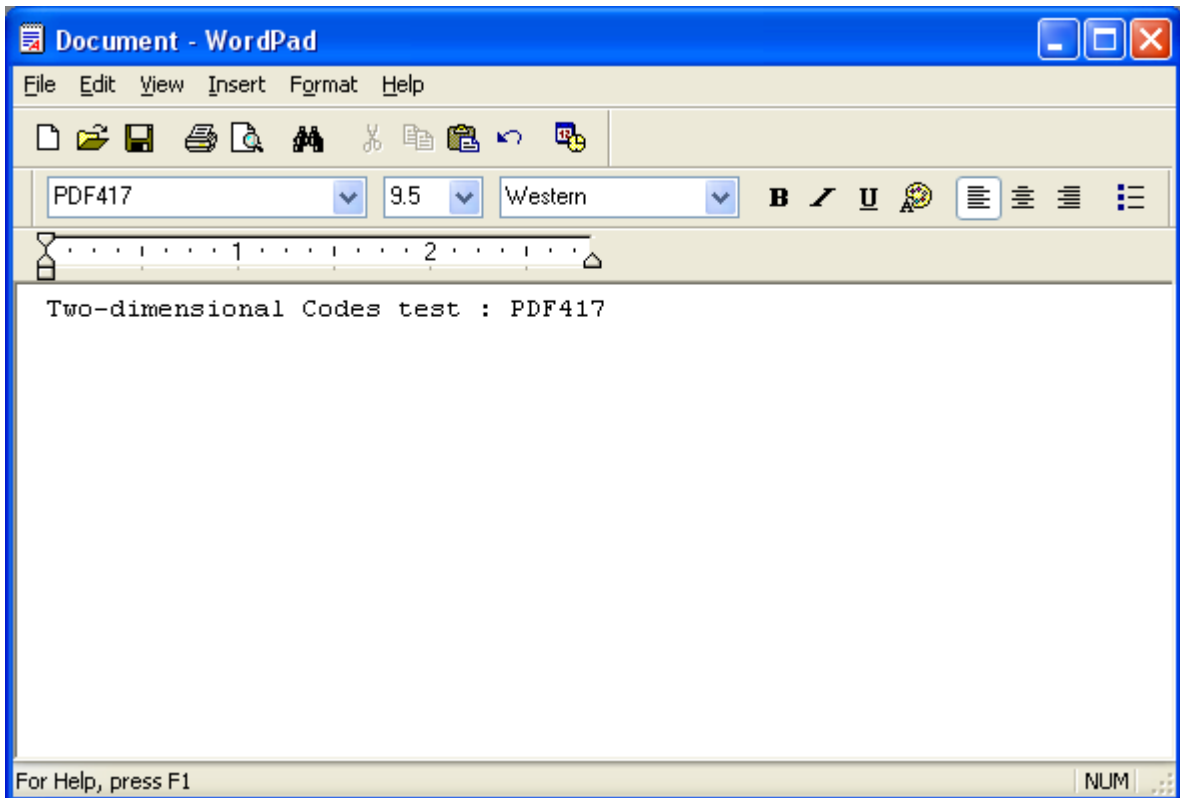
Use the Windows Driver of the printer to print the barcode.



- 1) Select the desired barcode from the Font menu (Code128).
- 2) Select the desired font size (20).
- 3) Enter "{A123453" in WordPad.
- 4) Click the Print button in the toolbar to print.

7-2-4 Two-Dimensional Barcode Printing

Use the Windows Driver of the printer to print the two-dimensional barcode.



- 1) Select the desired two-dimensional barcode from the Font menu (PDF417).
- 2) Select the desired font size (9.5).
- 3) Enter "Two-dimensional Codes Test: PDF417" in WordPad.
- 4) Click the Print button in the toolbar to print.