

Lynx™ Mold-Closed Limit Switch L-LS

The Lynx™ L-LS Mold-Closed Limit Switch is a tie-bar or machine mountable machine cycle input module designed to be used with the eDART System™.

The L-LS switch can be used to easily get a machine trigger off of most injection molding machines by following the installation steps below.



Always power down before working on any equipment.

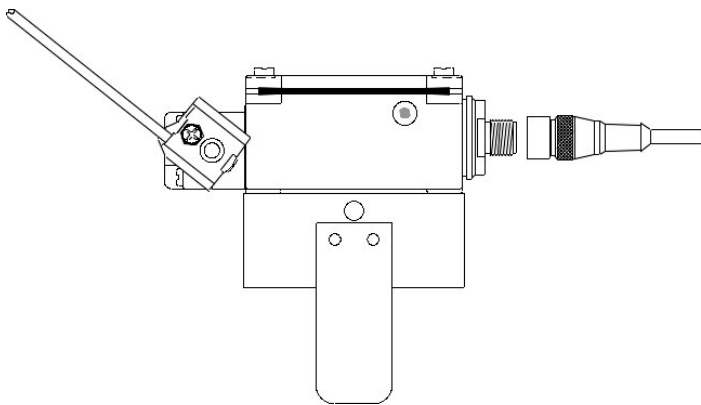


Figure 25: Lynx™ Mold-Closed Limit Switch side view

L-LS Installation

Step 1.

Switch the molding machine to Manual mode and close the mold.

Step 2.

Set the limit switch on the tie-bar as shown in figures 26 and 27.



Be careful to note the position of the ejector plate, the mold, the limit switch and its cable, so the limit switch and/or its cable does not get caught as the mold opens and closes.

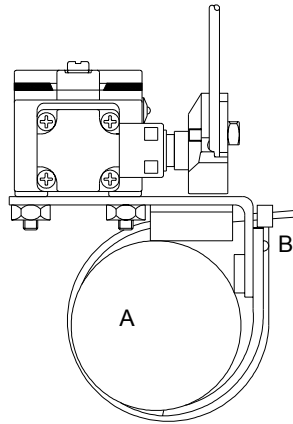



Figure 26: Lynx™ Mold-Closed Limit Switch front view

A	Tie Bar
B	Ty-Wrap

Table 25: Figure Labels



Always disconnect the power before working on this or any electrical equipment.

Step 3.

Slide the limit switch to the left until an audible click is heard from the switch. See Figure 27.

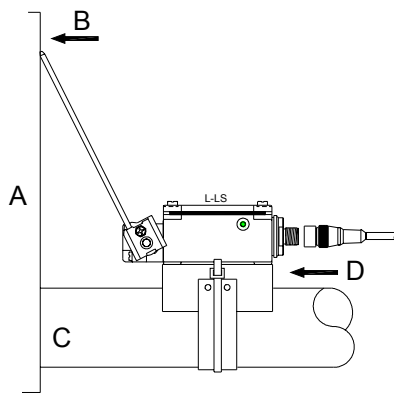


Figure 27: Lynx™ Mold-Closed Limit Switch side view

A	Moving Half
B	Ejector Plate
C	Tie Bar
D	Slide

Step 4.

Hold the limit switch in place and use a ty-wrap to tighten it down to the tie-bar. See figure 29.
More than one ty-wrap can be tied together if the tie-bar is large.

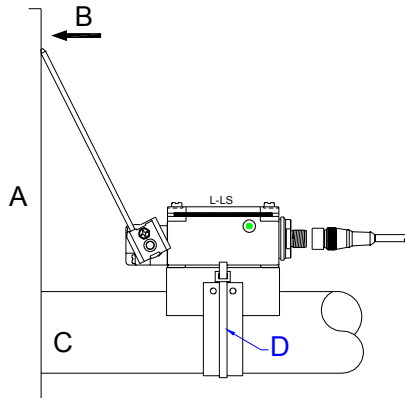


Figure 29: Lynx™ Mold-Closed Limit Switch L-LS side view



Always power down before working on any equipment.

A	Moving Half
B	Ejector Plate
C	Tie Bar
D	Tighten Ty-Wrap

Table 26: Figure Labels

Step 5.

Plug a Lynx™ cable between the limit switch and the eDART System™.

Step 6.

Run the machine to ensure proper use, while monitoring the eDART™ software.