

Netopia® 3387W-ENT Cable/DSL Wireless Router

Getting Started Guide



netopia®
MAKING BROADBAND WORK®

Copyright

©2003 Netopia, Inc., v.081203

All rights reserved. Printed in the U.S.A.

This manual and any associated artwork, software, and product designs are copyrighted with all rights reserved. Under the copyright laws such materials may not be copied, in whole or part, without the prior written consent of Netopia, Inc. Under the law, copying includes translation to another language or format.

Netopia, Cayman, and "Making Broadband Work" are registered trademarks of Netopia, Inc. All rights reserved.

Netopia, Inc.
6001 Shellmound Street, 4th Floor
Emeryville, CA 94608
U.S.A.

Part Number

Netopia part number 6161161-00-01

Chapter 1 — Introduction.....	1-5
Overview	1-5
Features and Capabilities	1-5
How to Use this Guide.....	1-6
Chapter 2 — Making the Physical Connections.....	2-1
Find a Location	2-1
What You Need	2-1
Important Safety Instructions	2-2
POWER SUPPLY INSTALLATION	2-2
Identify the Connectors and Attach the Cables	2-3
Netopia 3387W-ENT Cable/DSL Wireless Router	
Status Lights.....	2-5
Chapter 3 — Connecting to Your Local Area Network.....	3-1
Readying Computers on Your Local Network.....	3-1
Connecting to an Ethernet Network	3-2
Chapter 4 — Configuring TCP/IP.....	4-5
Configuring TCP/IP on Windows-based Computers	4-5
Microsoft Windows.....	4-5
Configuring TCP/IP on Macintosh Computers	4-7
Macintosh MacOS 8 or higher or Mac OS X.....	4-7
Chapter 5 — Telnet-Based Management	5-1
Connecting through a Telnet Session.....	5-2
Configuring Telnet software	5-2
Navigating through the Telnet Screens.....	5-3
Chapter 6 — Easy Setup	6-1
Easy Setup Telnet Screens	6-1
Accessing the Easy Setup Telnet screens.....	6-1
Quick Easy Setup Connection Path.....	6-2
1. WAN Ethernet Configuration	6-4
2. Easy Setup Profile	6-5
3. IP Easy Setup	6-6

4. Easy Setup Security Configuration	6-7
Chapter 7 — Wireless LAN Configuration.....	7-1
Wireless Configuration	7-1
Appendix A — Technical Specifications and Safety Information ..	A-1
Description.....	A-1
Power requirements	A-1
Environment	A-1
Software and protocols.....	A-1
Agency approvals	A-2
Regulatory notices	A-2
Manufacturer’s Declaration of Conformance	A-3
Important Safety Instructions	A-4
FCC Part 68 Information.....	A-5
Electrical Safety Advisory	A-6

Chapter 1

Introduction

Overview

The Netopia 3387W-ENT Cable/DSL Wireless Router is a full-featured Ethernet router for connecting both wired and wireless local area networks (LANs) to the Internet and other remote networks. The Netopia 3387W-ENT Cable/DSL Wireless Router connects easily to the Ethernet port of your cable or DSL modem to provide your whole network with a high-speed connection to the outside world.

This section covers the following topics:

- [“Features and Capabilities” on page 1-5](#)
- [“How to Use this Guide” on page 1-6](#)

Features and Capabilities

The Netopia 3387W-ENT Cable/DSL Wireless Router provides the following features:

- 10/100-BaseT Ethernet WAN port to connect to any broadband modem, such as DSL or Cable
- LAN interface: four port 10/100BaseTX RJ-45 Ethernet switch with Auto-crossover support, Wi-Fi CERTIFIED™ 802.11b wireless support for high-speed wireless LAN connections
- Dual tuned (internal/external) antennas for 3D-Reach wireless networking
- Point-to-Point Protocol (PAP/CHAP authentication)
- PPP over Ethernet Gateway
- PPP over Ethernet pass-through
- Transparent bridging option
- Support for IP routing for Internet connectivity
- Numbered or unnumbered WAN interface
- Support for Ethernet LANs with up to eight Ethernet IP subnets
- NAT/NAPT, Multi-NAT, and DHCP (client, server, and relay) for security and convenience
- DNS proxy
- IP Multicast Forwarding, IGMP V1, V2
- RIP1 and RIP2, static routes
- IP QoS: TOS bit prioritization
- VPN Pass-through for PPTP and IPsec

1-6 Getting Started Guide

- Built-in VPN gateway features offer support for up to 15 PPTP or IPSec VPN tunnels
- IPSec implementation supports DES or 3DES encryption, MD5 or SHA1 encapsulation, and manual or IKE keying
- Built-in firewall protects LAN resources from Internet intruders
- Backup Default Gateway feature with an external router enables high-availability solutions
- Menu-driven or CLI interfaces via Telnet
- Easy Setup with menu-driven interface
- Tiered Access, 2 levels of configuration access
- Configuration Management, up to 3 backup configurations
- TFTP download/upload of new firmware and configuration files
- System diagnostics and logs
- SNMP V1 and V2 (read/write access)
- Management utilities: ICMP ping, trace route, Telnet client, and Syslog client
- Status lights (LEDs) for easy monitoring and troubleshooting
- Wall-mountable, Bookshelf (Side-stackable), or Desktop-stackable design for efficient space usage

How to Use this Guide

In addition to the documentation contained in the accompanying *Firmware User's Guide*, this guide is designed to get you up and running and connected to your local area network and the Internet. It is intended to be viewed on-line, using the powerful features of the Adobe Acrobat Reader. The information display has been deliberately designed to present the maximum information in the minimum space on your screen. You can keep this document open while you perform any of the procedures described, and find useful information about the procedure you are performing.

You can also print out all of the manual, or individual sections, if you prefer to work from hard copy rather than on-line documentation. The pages are formatted to print on standard 8 1/2 by 11 inch paper. We recommend that you print on 3-hole punched paper, so that you can put the pages in a binder for future reference.

This guide is organized into chapters describing the Netopia 3387W-ENT's advanced features. You may want to read each chapter's introductory section to familiarize yourself with the various features available.

Use the guide's table of contents and index to locate informational topics.

Chapter 2

Making the Physical Connections

This section tells you how to make the physical connections to your Netopia 3387W-ENT Cable/DSL Wireless Router. This section covers the following topics:

- “Find a Location” on page 2-1
- “What You Need” on page 2-1
- “Identify the Connectors and Attach the Cables” on page 2-3
- “Netopia 3387W-ENT Cable/DSL Wireless Router Status Lights” on page 2-5

Find a Location

When choosing a location for the Netopia Cable/DSL Wireless Router, consider:

- Available space and ease of installation
- Physical layout of the building and how to best use the physical space available for connecting your Netopia Cable/DSL Wireless Router to the LAN
- Available wiring and jacks
- Distance from the point of installation to the next device (length of cable or wall wiring)
- Ease of access to the front of the unit for configuration and monitoring
- Ease of access to the back of the unit for checking and changing cables
- Cable length and network size limitations when expanding networks

What You Need

Locate all items that you need for the installation.

Included in your router package are:

- The Netopia 3387W-ENT Cable/DSL Wireless Router
- A power adapter and cord
- One yellow Category 5 Ethernet cable
- One gray RJ-45 Modem cable
- The Netopia CD containing software and documentation

2-2 Getting Started Guide

You will need:

- A Windows-based PC or a Macintosh computer with Ethernet connectivity for configuring the Netopia 3387W-ENT. This may be built-in Ethernet or an add-on card, with TCP/IP installed and configured. See “Configuring TCP/IP” on page 4-5.
- An installed and functioning cable or DSL (broadband) modem with an Internet connection to connect to the WAN port on your Netopia 3387W-ENT Cable/DSL Wireless Router.

Important Safety Instructions

POWER SUPPLY INSTALLATION

Connect the power supply cord to the power jack on the Cayman Router. Plug the power supply into an appropriate electrical outlet.

CAUTION: Depending on the power supply provided with the product, either the direct plug-in power supply blades, power supply cord plug or the appliance coupler serves as the main power disconnect. It is important that the direct plug-in power supply, socket-outlet or appliance coupler be located so it is readily accessible.

CAUTION (North America Only): For use only with a CSA Certified or UL Listed Limited Power Source or Class 2 power supply, rated 12Vdc, 1.5A.

CAUTION (Europe Only): For use only with a GS approved Limited Power Source, rated 12Vdc, 1.5A.

(Sweden) Apparaten skall anslutas till jordat uttag när den ansluts till ett nätverk

(Norway) Apparatet må kun tilkoples jordet stikkontakt.

TELECOMMUNICATION INSTALLATION CAUTIONS

When using your telephone equipment, basic safety precautions should always be followed to reduce the risk of fire, electric shock and injury to persons, including the following:

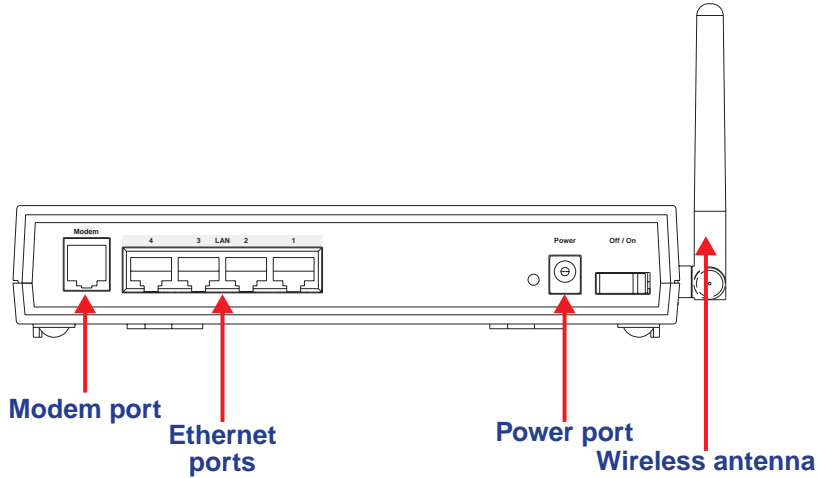
1. Do not use this product near water, for example, near a bathtub, wash bowl, kitchen sink or laundry tub, in a wet basement or near a swimming pool.
2. Avoid using a telephone (other than a cordless type) during an electrical storm. There may be a remote risk of electrical shock from lightning.
3. Do not use the telephone to report a gas leak in the vicinity of the leak.

SAVE THESE INSTRUCTIONS

Identify the Connectors and Attach the Cables

Identify the connectors on the back panel and attach the necessary Netopia Router cables.

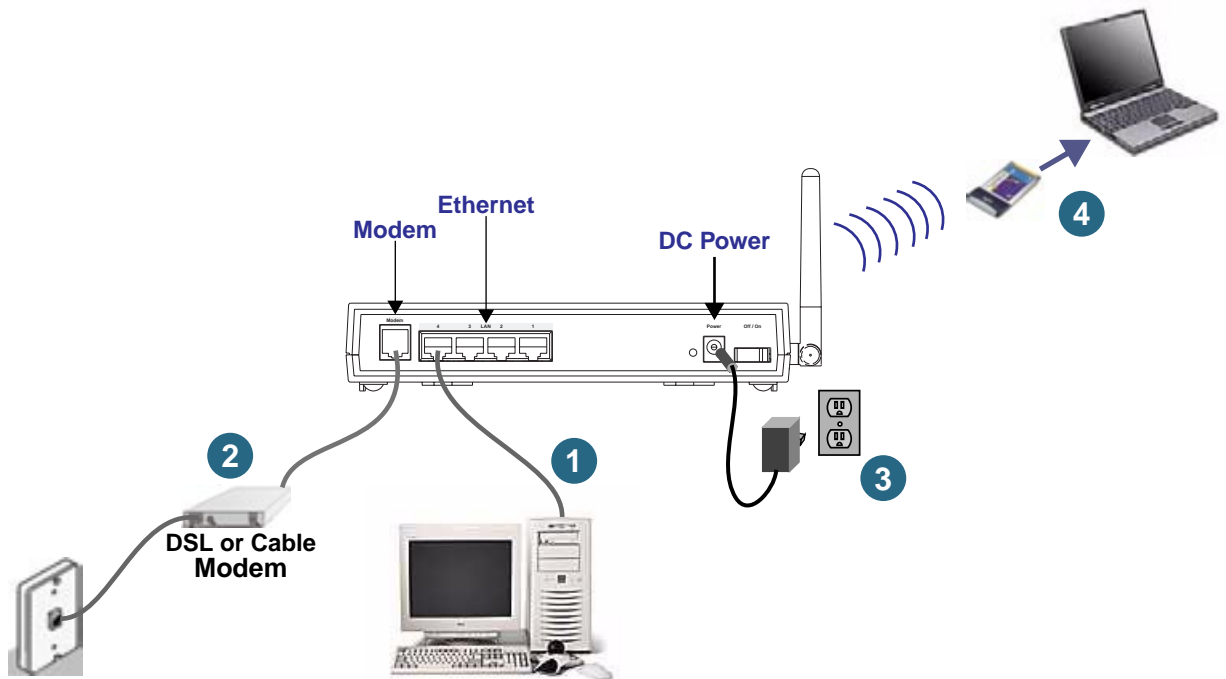
Netopia 3387W-ENT back panel



Port	Description
Modem port	An RJ-45 jack labeled Modem to connect to your DSL or cable modem's Ethernet port.
Ethernet ports	Four RJ-45 10/100Base-T Ethernet jacks. You can use one of these to configure the Netopia 3387W-ENT. You can either connect your computer directly to an Ethernet port using the supplied Category 5 Ethernet cable, or connect both your computer and the Netopia 3387W-ENT to an existing LAN environment. The Ethernet ports are auto-sensing, eliminating the need for a crossover cable.
Power port	A DC power adapter cable connection.
Wireless antenna	An 802.11b wireless antenna to send and receive traffic from your wireless LAN computers.

2-4 Getting Started Guide

Connect your computer, DSL line, and power source as shown.



1. For a direct computer to router Ethernet connection, use the standard Ethernet cable included with your router.
2. Use the supplied RJ-45 Modem cable to connect the router to your cable or DSL modem's Ethernet port. Be sure your cable or DSL modem is correctly installed according to its instructions.
3. Connect the supplied power brick to a power outlet and the connector end to the router.
4. Each computer using the wireless network requires its own Wi-Fi CERTIFIED™ 802.11b adapter to be installed in the computer.

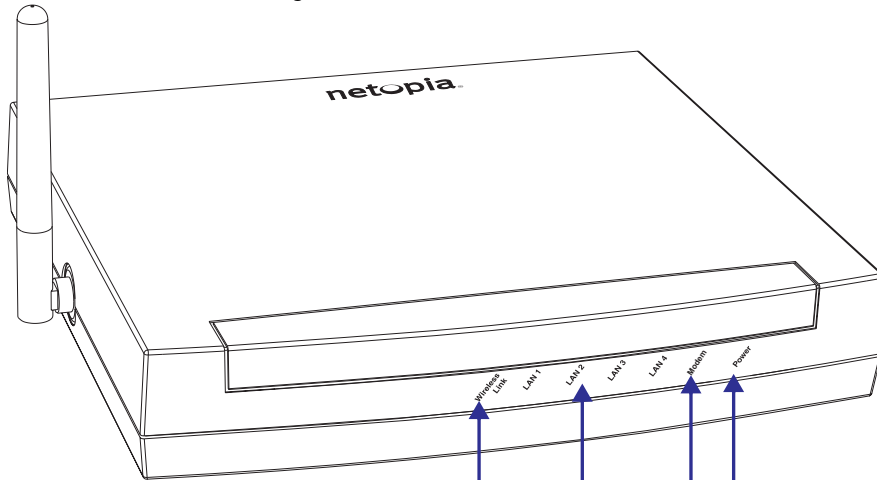
This may be purchased from any Wi-Fi CERTIFIED™ manufacturer for your particular computer.

You should now have: the power adapter plugged in; the Ethernet cable connected between the router and your computer; and the telephone cable connected to its appropriate wall jack.

Netopia 3387W-ENT Cable/DSL Wireless Router Status Lights

The figure below represents the Netopia 3387W-ENT status light (LED) panel.

Netopia 3387W-ENT status indicator lights



Power:
Solid **green** when the power is on

Modem -
Solid **green** when connected
Flashes **green** for traffic on the WAN

LAN 1, 2, 3, 4 -
Solid **green** when connected to each port on the LAN.
Flash **green** when there is activity on each port.

Wireless Link -
Flashes **green** when there is activity on the wireless LAN.

Chapter 3

Connecting to Your Local Area Network

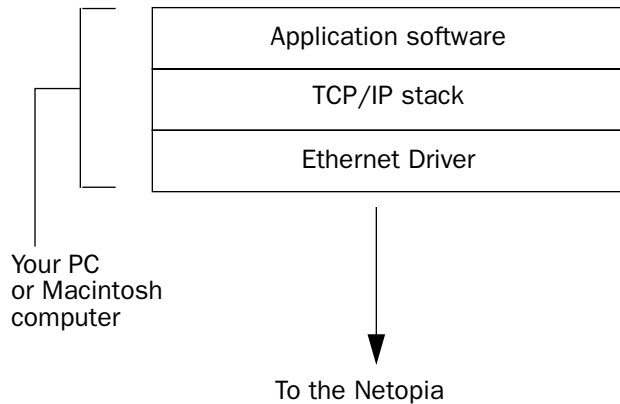
This chapter describes how to physically connect the Netopia 3387W-ENT to your local area network (LAN). Before you proceed, make sure the Netopia 3387W-ENT is properly configured. You can customize the router's configuration for your particular LAN requirements using console-based management (see [“Telnet-Based Management”](#) on page 5-1).

This section covers the following topics:

- [“Readying Computers on Your Local Network”](#) on page 3-1
- [“Connecting to an Ethernet Network”](#) on page 3-2

Readying Computers on Your Local Network

PC and Macintosh computers must have certain components installed before they can communicate through the Netopia 3387W-ENT. The following illustration shows the minimal requirements for a typical PC or Macintosh computer.



Application software: This is the software you use to send e-mail, browse the World Wide Web, read newsgroups, etc. These applications may require some configuration. Examples include the Eudora e-mail client and the Web browsers Microsoft Internet Explorer and Netscape Navigator.

TCP/IP stack: This is the software that lets your PC or Macintosh computer communicate using Internet protocols. TCP/IP stacks must be configured with some of the same information you used to configure the Netopia 3387W-ENT. There are a number of TCP/IP stacks available for PC computers. Windows 95 includes a built-in TCP/IP stack. Macintosh computers use either MacTCP or Open Transport. See [“Configuring TCP/IP on Windows-based Computers”](#) on page 4-5. Macintosh computers use either MacTCP or Open Transport. See [“Configuring TCP/IP on Macintosh Computers”](#) on page 4-7.

3-2 Getting Started Guide

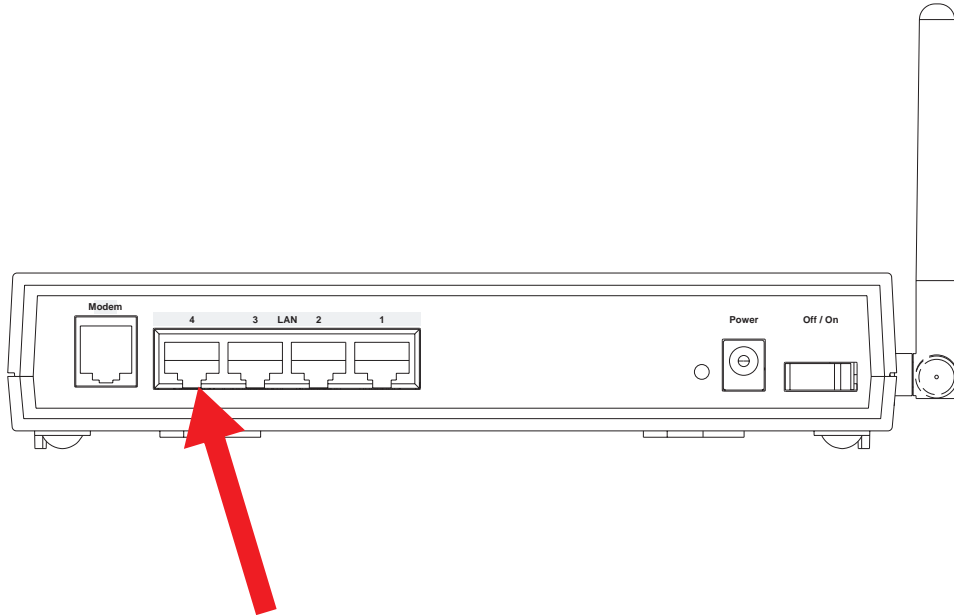
Ethernet: Ethernet hardware and software drivers enable your PC or Macintosh computer to communicate on the LAN.

Once the Netopia 3387W-ENT is properly configured and connected to your LAN, PC and Macintosh computers that have their required components in place will be able to connect to the Internet or other remote IP networks.

Connecting to an Ethernet Network

You can connect a standard 10/100Base-T Ethernet network to the Netopia 3387W-ENT using any of its Ethernet ports.

Netopia 3387W-ENT back panel

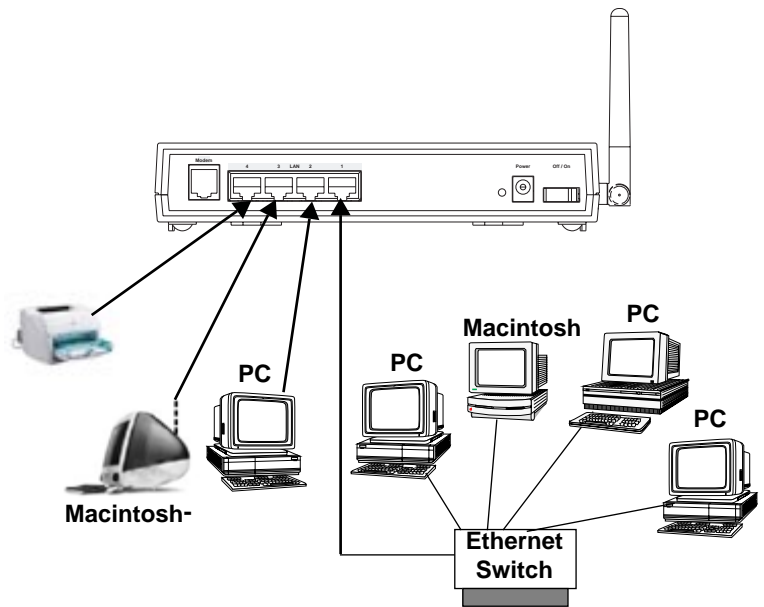


If you add devices connected through a hub or switch, connect the hub or switch to an Ethernet port on the Netopia 3387W-ENT.

The Netopia 3387W-ENT in a 10/100Base-T network

To connect your 10/100Base-T network to the Netopia 3387W-ENT through the Ethernet port, use standard Category 5 Ethernet cables with RJ-45 connectors.

You can attach additional devices using standard Category 5 Ethernet cables (not provided) connected to a 10- or 100Base-T Ethernet hub or switch. The ports on the router will auto detect 10- or 100Base-T. Crossover cables are not required.



3-4 Getting Started Guide

The Netopia 3387W-ENT in an 802.11b wireless network



To create your 802.11b wireless network you must install a Wi-Fi CERTIFIED™ wireless adapter card in each computer that will join the wireless LAN.

Many manufacturers offer such adapter cards for almost all major brands of computers. You can find lists of these adapters on the Wi-Fi Alliance website: <http://www.weca.net>.

Follow the manufacturer's instructions for installing your wireless adapter card, and using any scanning or networking utility they provide. These vary by manufacturer.

Once your Netopia 3387W-ENT is installed and configured, and the wireless LAN is enabled, your wireless client computers can join your wireless LAN.

Various wireless security features are available, but disabled by default. See [Chapter 7, "Wireless LAN Configuration,"](#) on [page 7-1](#) for instructions on enabling wireless security features.

Chapter 4

Configuring TCP/IP

Once you have set up your physical local area network, you will need to configure Internet Protocol (TCP/IP) on each client workstation connected to your Netopia 3387W-ENT. This chapter describes how to configure TCP/IP for both Windows-based and Macintosh computers.

This chapter explains the following topics:

- “Configuring TCP/IP on Windows-based Computers” on page 4-5
- “Configuring TCP/IP on Macintosh Computers” on page 4-7

Configuring TCP/IP on Windows-based Computers

Configuring TCP/IP on a Windows computer requires the following:

- An Ethernet card (also known as a network adapter)
- The TCP/IP protocol must be “bound” to the adapter or card

Microsoft Windows

Step 1. Navigate to the TCP/IP Properties Control Panel.

a. Some Windows versions follow a path like this:

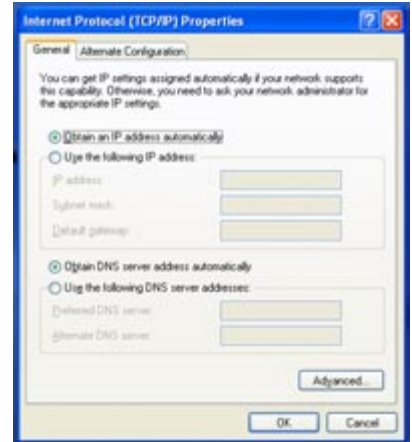
Start menu -> **Settings** -> **Control Panel** -> **Network** (or **Network and Dial-up Connections** -> **Local Area Connection** -> **Properties**) -> **TCP/IP [your_network_card]** or **Internet Protocol [TCP/IP]** -> **Properties**



4-6 Getting Started Guide

b. Some Windows versions follow a path like this:

Start menu -> Control Panel -> Network and Internet Connections -> Network Connections -> Local Area Connection -> Properties -> Internet Protocol [TCP/IP] -> Properties



Then go to Step 2.

Step 2. Select *Obtain an IP address automatically*.

Step 3. Select *Obtain DNS server address automatically*, if available.

Step 4. Remove any previously configured Gateways, if available.

Step 5. OK the settings. Restart if prompted.

NOTE: You can also use these instructions to configure other computers on your network to accept IP addresses served by the Netopia 3387W-ENT.

Configuring TCP/IP on Macintosh Computers

The following is a quick guide to configuring TCP/IP for MacOS computers. Configuring TCP/IP in a Macintosh computer requires the following:

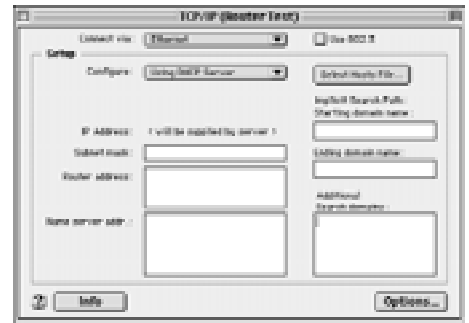
- You must have Open Transport installed, standard in MacOS 8 and higher and optional in earlier system versions.
- You must have built-in Ethernet or a third-party Ethernet card and its associated drivers installed in your Macintosh.

Macintosh MacOS 8 or higher or Mac OS X

Step 1. Access the **TCP/IP** or **Network** control panel.

a. MacOS follows a path like this:

Apple Menu -> Control Panels -> TCP/IP Control Panel



b. Mac OS X follows a path like this:

Apple Menu -> System Preferences -> Network



Then go to Step 2.

Step 2. Select *Built-in Ethernet*

4-8 Getting Started Guide

Step 3. Select *Configure Using DHCP*

Step 4. Close and Save, if prompted.

NOTE: You can use these instructions to configure other computers on your network to accept IP addresses served by the Netopia 3387W-ENT.

Chapter 5

Telnet-Based Management

Telnet-based management is a menu-driven interface for the capabilities built into the Netopia 3387W-ENT. Telnet-based management provides access to a wide variety of features that the router supports. You can customize these features for your individual setup. This chapter describes how to access the Telnet-based management screens.

This section covers the following topics:

- “Connecting through a Telnet Session” on page 5-2
- “Navigating through the Telnet Screens” on page 5-3

Telnet-based management screens contain seven entry points to the Netopia 3387W-ENT configuration and monitoring features. The entry points are displayed in the Main Menu shown below:

```
Netopia 3387W-ENT

Easy Setup...
WAN Configuration...
System Configuration...
Utilities & Diagnostics...
Statistics & Logs...
Quick Menus...
Quick View...

Return/Enter goes to Easy Setup -- minimal configuration.
You always start from this main screen.
```

- The **Easy Setup** menu displays and permits changing the values contained in the default connection profile. You can use Easy Setup to initially configure the router directly through a Telnet session.

Easy Setup menus contain up to five descendant screens for viewing or altering these values. The number of screens depends on whether you have optional features installed.

This manual describes the Easy Setup menus to get you up and running quickly. For more advanced features offered in the menus listed below, see the *Firmware User's Guide*.

- The **WAN Configuration** menu displays and permits changing your wireless network settings, connection profile(s) and default profile, creating or deleting additional connection profiles, and configuring or

5-2 Getting Started Guide

reconfiguring the manner in which you may be using the router to connect to more than one service provider or remote site.

- The **System Configuration** menus display and permit changing:
 - IP Setup
 - Filter Sets
 - IP Address Serving
 - Network Address Translation (NAT)
 - Date and Time
 - SNMP (Simple Network Management Protocol)
 - Security
 - Upgrade Feature Set
 - Change Device to a Bridge
 - Logging
- The **Utilities & Diagnostics** menus provide a selection of seven tools for monitoring and diagnosing the router's behavior, as well as for updating the firmware and rebooting the system.
- The **Statistics & Logs** menus display nine sets of tables and device logs that show information about your router, your network, and their history.
- The **Quick Menu** screen is a shortcut entry point to 22 of the most commonly used configuration menus that are accessed through the other menu entry points.
- The **Quick View** menu displays at a glance current real-time operating information about your router.

Connecting through a Telnet Session

Features of the Netopia 3387W-ENT can be configured through the Telnet screens.

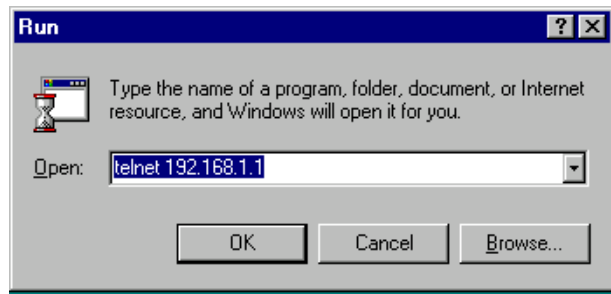
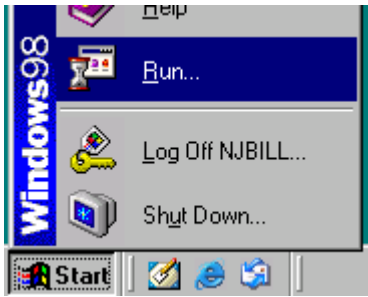
Before you can access the Telnet screens, you must have:

- A network connection locally to the router or IP access to the router.
- Telnet software installed on the computer you will use to configure the router

Configuring Telnet software

If you are configuring your router using a Telnet session, your computer must be running a Telnet software program.

- If you connect a PC with Microsoft Windows, you can use a Windows Telnet application or simply run Telnet from the Start menu.



- If you connect a Macintosh computer running Classic Mac OS, you can use the NCSA Telnet program supplied on the Netopia CD. You install NCSA Telnet by dragging the application from the CD to your hard disk. Mac OS X users can use the Terminal application that comes with Mac OS X in the Utilities folder.

Navigating through the Telnet Screens

Use your keyboard to navigate the Netopia 3387W-ENT's configuration screens, enter and edit information, and make choices. The following table lists the keys to use to navigate through the Telnet screens.

To...	Use These Keys...
Move through selectable items in a screen or pop-up menu	Up, Down, Left, and Right Arrow
Set a change to a selected item or open a pop-up menu of options for a selected item like entering an upgrade key	Return or Enter
Change a toggle value (Yes/No, On/Off)	Tab
Restore an entry or toggle value to its previous value	Esc
Move one item up	Up arrow or Control + K
Move one item down	Down arrow or Control + O
Display a dump of the device event log	Control + E
Display a dump of the WAN event log	Control + F
Refresh the screen	Control + L

Chapter 6

Easy Setup

This chapter describes how to use the Easy Setup Telnet screens on your Netopia 3387W-ENT. After completing the Easy Setup Telnet screens, your router will be ready to connect to the Internet or another remote site.

Easy Setup Telnet Screens

Using four Easy Setup Telnet screens, you can:

- Modify a connection profile for your router for the connection to your ISP or remote location
- Set up IP addresses and IP address serving
- Password-protect configuration access to your Netopia 3387W-ENT

Accessing the Easy Setup Telnet screens

To access the Telnet screens, Telnet to the Netopia Router over your Ethernet network. See [“Connecting through a Telnet Session”](#) on page 5-2.

Note: Before continuing, make sure you have the information that your ISP or network administrator has given you for configuring the Netopia Router.

The Netopia Router’s first Telnet screen, Main Menu, appears in the terminal window of the attached PC or Macintosh computer when:

- The Netopia Router is turned on
- The computer is connected to the Netopia Router
- Telnet software is running and configured correctly

Quick Easy Setup Connection Path

This section may be all you need to do to configure your Netopia 3387W-ENT Cable/DSL Wireless Router. Your service provider will supply you with several parameter values. Below is a handy checklist:

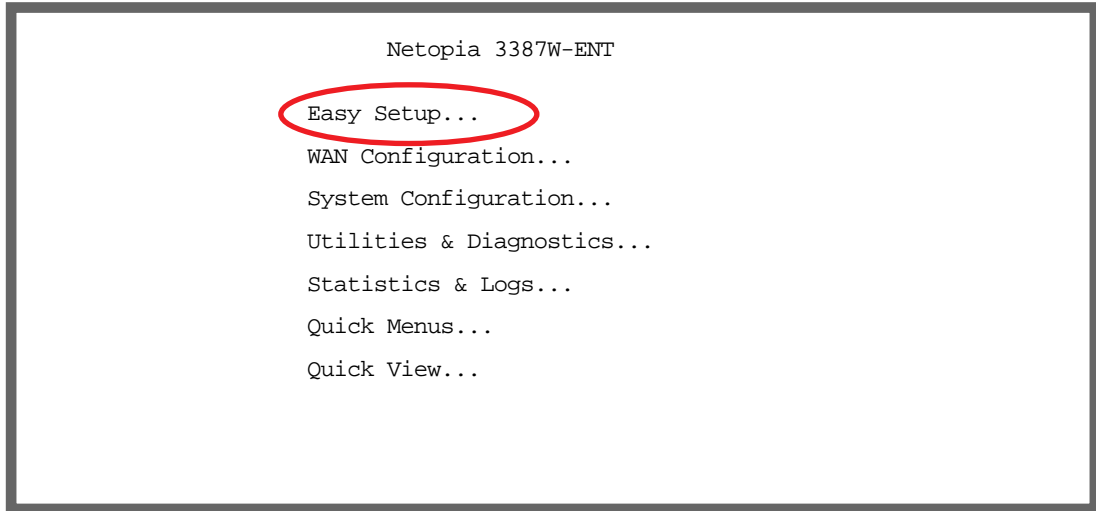
WAN Ethernet Configuration Screen	
Enable PPP over Ethernet	<input type="checkbox"/> Off (default) or <input type="checkbox"/> On
Address Translation Enabled: (if PPPoE is not enabled)	<input type="checkbox"/> Yes (default) or <input type="checkbox"/> No
	Local WAN IP Address: _____ (0.0.0.0 is default)
	Local WAN IP Mask: (if Local WAN IP Address is other than 0.0.0.0) _____
Easy Setup Profile Screen (only if PPPoE is enabled)	
Address Translation Enabled:	<input type="checkbox"/> Yes (default) or <input type="checkbox"/> No
IP Addressing	<input type="checkbox"/> Unnumbered (default) <input type="checkbox"/> Numbered
Remote IP Address:	_____
	(127.0.0.2 is default)
Remote IP Mask:	_____
	(255.255.255.255 is default)
PPP Authentication	<input type="checkbox"/> PAP (default) or <input type="checkbox"/> CHAP <input type="checkbox"/> None
PAP User Name/ CHAP Host Name:	_____
PAP Password/ CHAP Secret:	_____
Local WAN IP Address: (Numbered IP addressing only)	_____
	(0.0.0.0 is default)
	Local WAN IP Mask: (Numbered IP addressing only) _____
IP Easy Setup Screen	
Ethernet IP Address:	_____ (192.168.1.1 default)
Ethernet Subnet Mask:	_____ (255.255.255.0 default)
Domain Name:	_____
Primary Domain Name Server:	_____
Secondary Domain Name Server:	_____
Default IP Gateway:	_____
IP Address Serving:	<input type="checkbox"/> On (default) or <input type="checkbox"/> Off
Number of Client IP Addresses:	_____ (100 is default)
1st Client Address:	_____ (192.168.1.100 is default)
Easy Setup Security Configuration Screen	
Write Access Name:	_____
Write Access Password:	_____

The following steps will get you up and running quickly:

1. Open a Telnet session to **192.168.1.1** to bring up the Main Menu.

If you don't know how to do this, see [“Connecting through a Telnet Session” on page 5-2](#).

The Main Menu appears.



If you do not see the Main Menu, verify that:

- The computer used to view the Telnet screen has an Ethernet connection to the Netopia 3387W-ENT's Ethernet port. See [“Connecting through a Telnet Session” on page 5-2](#).
 - Telnet is configured for the recommended values.
 - You have entered the correct password, if necessary. Your Netopia 3387W-ENT's Telnet access may be password protected from a previous configuration. See your system administrator to obtain the password. See the *Firmware User's Guide* chapter on “Troubleshooting” for more suggestions.
2. Select the first item on the Main Menu list, **Easy Setup**. Press Return to bring up the WAN Ethernet Configuration menu screen.

1. WAN Ethernet Configuration

```

WAN Ethernet Configuration

Enable PPP over Ethernet:          Off
Address Translation Enabled:       Yes
Local WAN IP Address               0.0.0.0

TO MAIN MENU                       NEXT SCREEN

Set up the basic IP attributes of your Ethernet Module in this screen.

```

1. **Enable PPP over Ethernet** is **Off** by default. If your service provider uses PPPoE authentication toggle this to **On**. If you toggle this item to On, the remaining items are hidden, and your PPP authentication information is entered on the next screen. PPPoE is commonly used by DSL service providers.
2. **Address Translation Enabled** allows you to specify whether or not the router performs Network Address Translation (NAT) on the Ethernet WAN port. NAT is enabled by default.
3. **Local WAN IP Address** allows you to manually configure an IP address for use on the Ethernet WAN port. Accepting the WAN IP Address value 0.0.0.0 indicates that the Netopia 3387W-ENT will act as a DHCP client on the Ethernet WAN port and attempt to acquire an address from a DHCP server in your ISP's network. By default, the router acts as a DHCP client on the Ethernet WAN port. This is the normal configuration for most cable modem connections.
4. The **Local WAN IP Mask** field becomes visible if you specify a Local WAN IP Address. This allows you to manually configure an IP subnet mask for use on the Ethernet WAN port. This item is visible only if you have configured a non-zero Local WAN IP Address; otherwise, the router obtains a subnet mask via DHCP.
5. Press the Down arrow key until you reach **NEXT SCREEN**. Press Return to bring up the next screen.

Note: If you have not enabled PPPoE in this screen, the "Easy Setup Profile" step is skipped and the screen does not appear next. The next screen will be ["3. IP Easy Setup"](#) on page 6-6.

2. Easy Setup Profile

The Easy Setup Profile screen is where you configure the parameters that control the Netopia 3387W-ENT's connection to a specific remote destination, usually your ISP or a corporate site. On a Netopia 3387W-ENT you can add up to 15 more connection profiles, for a total of 16, although you can only use one at a time, unless you are using Virtual Private Networks (VPNs).

Note: This screen only appears if you have enabled PPPoE in the previous screen. Therefore, you need only change or enter values in the fields as noted in the following:

```

Connection Profile 1: Easy Setup Profile

Address Translation Enabled:      Yes
IP Addressing...                 Unnumbered

Remote IP Address:               127.0.0.2
Remote IP Mask:                 255.255.255.255

PPP Authentication...           PAP
Send User Name:
Send Password:

PREVIOUS SCREEN                 NEXT SCREEN

Toggle to Yes if this is a single IP address ISP account.
Enter basic information about your WAN connection with this screen.

```

1. To enable address translation, toggle **Address Translation Enabled** to **Yes** (the default). You need not change this unless you have a specific reason. For more information on Network Address Translation, see the *Firmware User's Guide* chapter on "Multiple Network Address Translation (MultiNAT)".
2. Unnumbered **IP Addressing** is enabled by default. (You may choose Numbered addressing from the pop-up menu, if specifically instructed to do so.) Unless otherwise specified by your service provider, accept the default Unnumbered, and do not change the next two values.

If you selected Unnumbered IP Addressing:

- the editable field labeled **Remote IP Address** should be 127.0.0.2 (the default). Press Return.
- the editable field labeled **Remote IP Mask** should be 255.255.255.255 (the default). Press Return.

3. Select **PPP Authentication** and press Return. The authentication protocol and user name/password combinations you enter must be assigned or agreed to in advance between you and your ISP.

From the pop-up menu that appears, select the authentication method your ISP uses: PAP (Password Authentication Protocol), CHAP (Challenge Handshake Authentication Protocol), or None.

- PAP is the most common, and requires you to enter a **User Name** and **Password** in the next two fields.
- CHAP requires you to enter a **Host Name** and **Secret** in the next two fields.

4. Press the Down arrow key until you reach **NEXT SCREEN**. Press Return to bring up the next screen.

3. IP Easy Setup

The IP Easy Setup screen is where you enter information about your Netopia Router's:

- Ethernet IP address
- Ethernet Subnet mask
- Domain Name
- Domain Name Server IP address
- Default gateway IP address

Consult with your network administrator to obtain the information you will need. For more information about setting up IP, see the *Firmware User's Guide* chapter on "IP Setup".

```

                                     IP Easy Setup

Ethernet IP Address:                  192.168.1.1
Ethernet Subnet Mask:                255.255.255.0

Domain Name:                          isp.net
Primary Domain Name Server:          209.3.224.21
Secondary Domain Name Server:        209.3.224.20

Default IP Gateway:                  127.0.0.2

IP Address Serving:                   On

Number of Client IP Addresses:        100
1st Client Address:                   192.168.1.100

PREVIOUS SCREEN                       NEXT SCREEN

Enter an IP address in decimal and dot form (xxx.xxx.xxx.xxx).
Set up the basic IP & IPX attributes of your Netopia in this screen.
```

1. Select **Ethernet IP Address** and enter the first IP address from the IP address range your ISP has given you only if you are not using Network Address Translation (NAT). This will be the Netopia Router's IP address.

The Ethernet IP Address defaults to an address (192.168.1.1) within a range reserved by the Internet address administration authority for use within private networks.

Because this is a private network address, it should never be directly connected to the Internet. Using NAT for all your connection profiles will ensure this restriction. See the *Firmware User's Guide* chapter on "Multiple Network Address Translation (MultiNAT)" for more information.

2. Select **Ethernet Subnet Mask** and enter the subnet mask your ISP has given you only if you are not using NAT. The Ethernet Subnet Mask defaults to a standard class mask derived from the class of the Ethernet IP address you entered in the previous step.
3. Press the Down arrow key until the editable field labeled **Domain Name** is highlighted.
4. If you have a static IP Address, type the Domain Name your ISP gave you. Press Return. The next field **Primary Domain Name Server** will be highlighted. If you are using DHCP or PPPoE, leave this field blank and skip Step 5.

5. Type the Primary Domain Name Server address your ISP gave you. Press Return. A new field **Secondary Domain Name Server** will appear. If your ISP gave you a secondary domain name server address, enter it here. Press Return until the next field **Default IP Gateway** is highlighted.
6. If you do not enter a **Default IP Gateway** value, the router defaults to the remote IP address you entered in the Easy Setup connection profile. If the Netopia Router does not recognize the destination of any IP traffic, it forwards that traffic to this gateway.

Do not confuse the remote IP address and the Default IP Gateway's address with the block of local IP addresses you may receive from your ISP. You use the local IP addresses for the Netopia 3387W-ENT's Ethernet port and for IP clients on your local network. The remote IP address and the default gateway's IP address should point to your ISP's router.

7. Toggle **IP Address Serving** to On or Off, depending on whether you want the device's IP address server to supply dynamic IP addresses to your client workstations. Normally, you would accept the default On so that workstations on your LAN can have IP addresses assigned dynamically from the router.
8. The IP address server will provide 100 IP addresses automatically to workstations on your LAN. You only need to change the **Number of Client IP Addresses** if you have some other IP addressing scheme.
9. By default, the **1st Client Address** is 192.168.1.100, based on the device's default IP address of 192.168.1.1. You only need to change this if you have some other IP addressing scheme.
10. Press the Down arrow key until you reach **NEXT SCREEN**. Press Return.

4. Easy Setup Security Configuration

The Easy Setup Security Configuration screen lets you password-protect your Netopia 3387W-ENT. Input your **Write Access Name** and **Write Access Password** with names or numbers totaling up to eleven digits.

If you password protect the Telnet screens, you will be prompted to enter the name and password you have specified every time you log in to the Telnet screens. Do not forget your name and password. If you do, you will be unable to access any of the configuration screens.

Additional security features are available. See the *Firmware User's Guide* chapter on "Security".

Easy Setup Security Configuration

It is strongly suggested that you password-protect configuration access to your Netopia. By entering a Name and Password pair here, access via serial, Telnet, and SNMP will be password-protected.

Be sure to remember what you have typed here, because you will be prompted for it each time you configure this Netopia.

Write Access Name:

Write Access Password:

PREVIOUS SCREEN

TO MAIN MENU

RESTART DEVICE

Configure a Configuration Access Name and Password here.

The final step in configuring the Easy Setup Telnet screens is to restart the Netopia 3387W-ENT, so that the configuration settings take effect.

1. Select **RESTART DEVICE**. A prompt asks you to confirm your choice.
2. Select **CONTINUE** to restart the Netopia Router and have your selections take effect.

Note: You can also restart the system at any time by using the Restart System utility in the Utilities and Diagnostics menu, or by unplugging and replugging the Netopia Router's power brick.

The Router will restart and your configuration settings will be activated. You can then Exit or Quit your Telnet application.

Easy Setup is now complete.

Chapter 7

Wireless LAN Configuration

This chapter describes how to use the Telnet-based management screens to access and configure advanced features of your equipment's wireless networking and security.

Wireless Configuration

To access the system configuration screens, select **System Configuration** in the Main Menu, then press Return.

The System Configuration menu screen appears:

```
System Configuration

IP Setup...
Filter Sets...
IP Address Serving...
Network Address Translation (NAT)...
Stateful Inspection...
Date and Time...
Wireless Configuration...
Console Configuration
SNMP (Simple Network Management Protocol)...

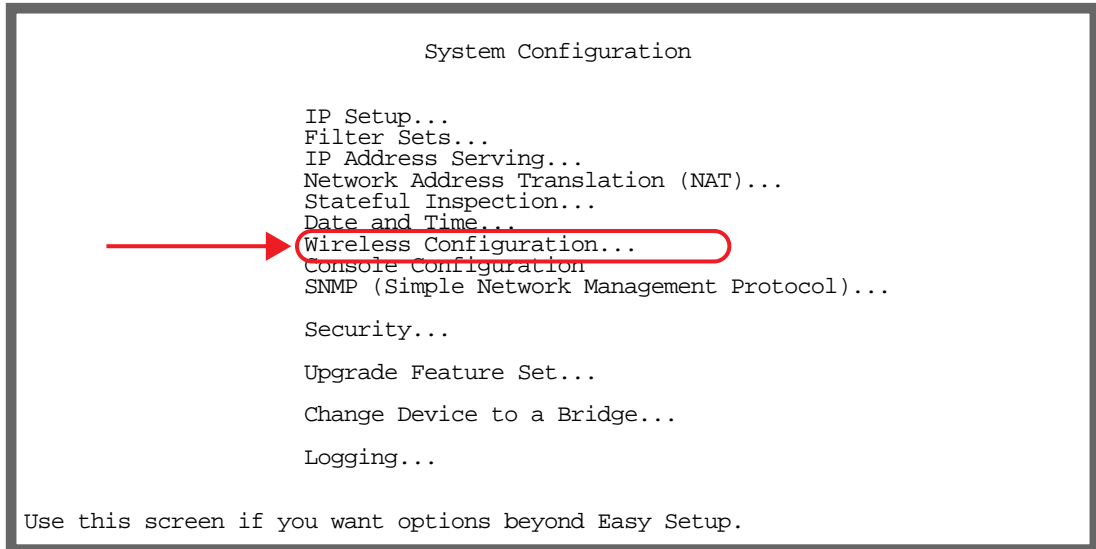
Security...

Upgrade Feature Set...

Change Device to a Bridge...

Logging...

Use this screen if you want options beyond Easy Setup.
```



You can enable or disable the wireless LAN by selecting **Wireless Configuration**. The Wireless Configuration screen appears.

```
Wireless LAN Configuration

Enable Wireless:                Yes
SSID:                          4405 2605
Channel...                      6
Closed System...               Open
Enable WEP...                   Off

Return/Enter accepts * Tab toggles * ESC cancels.
```

Enable Wireless is set to **Yes** by default. When **Enable Wireless** is disabled (**No**), the Router will not provide or broadcast any wireless LAN services.

- **SSID** (Wireless ID): The SSID is preset to a number that is unique to your unit. You can either leave it as is, or change it by entering a freeform name of up to 32 characters, for example “Ed’s Wireless LAN”. On client PCs’ software, this might also be called the *Network Name*. The SSID is used to identify this particular wireless LAN. Depending on their operating system or client wireless card, users must either:
 - select from a list of available wireless LANs that appear in a scanned list on their client
 - or, if you are in Closed System Mode (see “Closed System” on [page 7-3](#)), enter this name on their clients in order to join this wireless LAN.

Wireless LAN Configuration	
Enable Wireless:	Yes
SSID:	4405 2605
Channel...	6
Closed System...	Open
Enable WEP...	On - Manual
Default Key...	1
Key 1 (40b):	9a82ff3d92
Key 2 (128b):	2f5d42db7b734ff4e17b65881e
Key 3 (128b):	db298860b6f380e6daec7dbfd4
Key 4 (40b):	c8e5281016

Enter 10 digits for 40 bit, 26 digits for 128 bit, or 58 for 256bit WEP.

You can then configure:

- **Channel:** (1 through 11) on which the network will broadcast. This is a frequency range within the 2.4Ghz band. Channel selection depends on government regulated radio frequencies that vary from region to region. The widest range available is from 1 to 14. However, in North America only 1 to 11 may be selected. Europe, France, Spain and Japan will differ. Channel selection can have a significant impact on performance, depending on other wireless activity close to this Router. Channel selection is not necessary at the client computers; the clients will scan the available channels seeking access points using the same SSID as the client.
- **Closed System:** If you toggle **Closed System** to **Closed**, the wireless network is hidden from the scanning features of wireless client computers. Unless both the wireless clients and the Netopia 3387W-ENT share the same SSID in Closed System mode, the Netopia 3387W-ENT's wireless LAN will not appear as an available network when scanned for by wireless-enabled computers. Members of the Closed System WLAN must log onto the Netopia 3387W-ENT's wireless network with the identical SSID as that configured in the router.

Closed System mode is an ideal way to increase wireless security and to prevent casual detection by unwanted neighbors, office users, or malicious users such as hackers.

If you toggle it to **Open**, it is more convenient, but potentially less secure, for clients to access your WLAN by scanning available access points. You must decide based on your own network requirements.

- **Enable WEP:** You can provide a level of data security by enabling WEP (Wired Equivalent Privacy) for encryption of network data. You can enable 40-, 128-, or 256-bit WEP Encryption (depending on the capability of your client wireless card) for IP traffic on your LAN.

You select a single key for encryption of outbound traffic. The WEP-enabled client must have an identical key of the same length, in the identical slot (1 – 4) as the Router, in order to successfully receive and decrypt the traffic. Similarly, the client also has a 'default' key that it uses to encrypt its transmissions. In order for the Router to receive the client's data, it must likewise have the identical key of the same length, in the same slot. For simplicity, a Router and its clients need only enter, share, and use the first key.

7-4 Getting Started Guide

The pull-down menu for enabling WEP offers three settings: **Off**, **On - Automatic**, and **On - Manual**. You are strongly encouraged to enable WEP encryption on your wireless LAN.

- **Off** provides no encryption on your wireless LAN data.

```
Wireless LAN Configuration

Enable Wireless:                Yes
SSID:                          4405 2605
Channel...                      6
Closed System...               Open
Enable WEP...                   On - Automatic

Default Key...                  1
Passphrase:  Well I stand up next to a mountain,

Key 1 (40b): 5ad06701b4
Key 2 (128b): 80a6ab74749ea5a251011d8979
Key 3 (128b): e024cb9417a521b0e49e208fef
Key 4 (40b): 46a968d564

Enter a phrase and hit Enter to generate your encryption keys.
```

- **On - Automatic** is a passphrase generator. You enter a passphrase that you choose in the **Passphrase** field. The passphrase can be any string of words or numbers.

Note: While clients may also have a passphrase feature, these are vendor-specific and may not necessarily create the same keys. You can passphrase generate a set of keys on one, and manually enter them on the other to get around this.

Select the **Default Key** (#1 – #4). The longer the key, the stronger the encryption and the more difficult it is to break the encryption.

- **On - Manual** allows you to enter your own encryption keys manually. This is a difficult process, but only needs to be done once. Avoid the temptation to enter all the same characters.

```

Wireless LAN Configuration

Enable Wireless:                Yes
SSID:                          4405 2605
Channel...                      6
Closed System...               Open
Enable WEP...                   On - Manual

Default Key...                  1
+-----+
+-----+
Key | 40 bit | 9a82ff3d92
Key | 128 bit | 2f5d42db7b734ff4e17b65881e
Key | 256 bit | db298860b6f380e6daec7dbfd4
Key +-----+ c8e5281016

(Setting one of the key sizes)

```

Default Key (#1 – #4): Specifies which key the Router will use to encrypt transmitted traffic. The default is key #1.

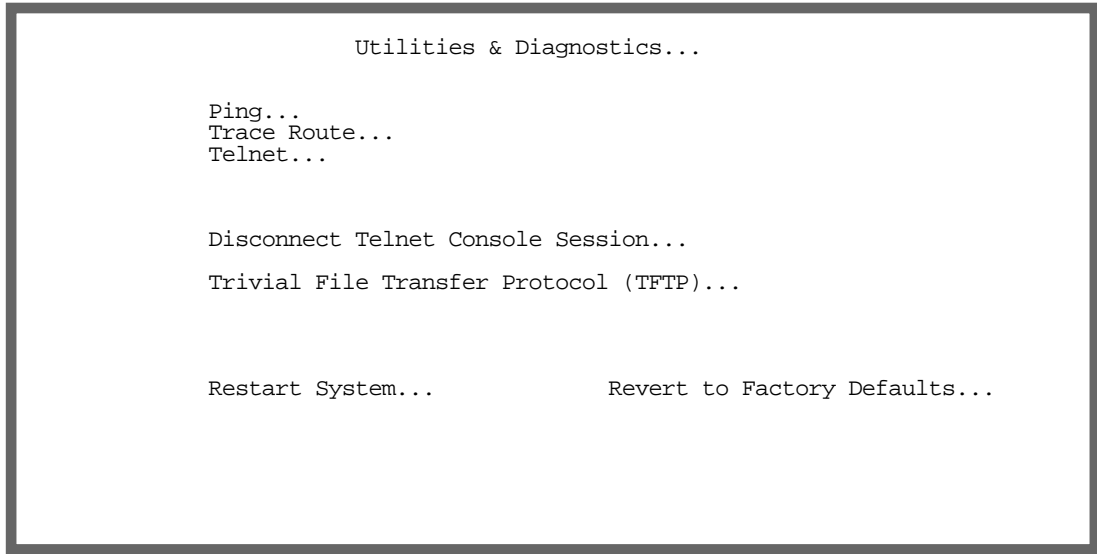
Key (#1 – #4): The encryption keys. You enter keys using hexadecimal digits. For 40/64bit encryption, you need ten digits; 26 digits for 128bit, and 58 digits for 256bit WEP. Hexadecimal characters are 0 – 9, and a – f. The longer the key, the stronger the encryption and the more difficult it is to break the encryption.

Examples:

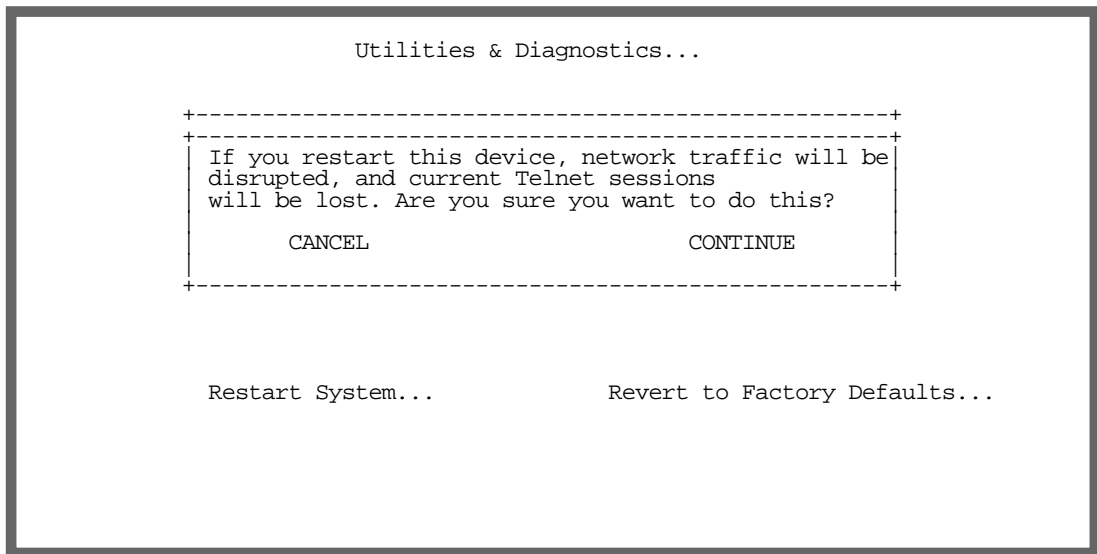
- 40bit: 02468ACE02
- 128bit: 0123456789ABCDEF0123456789
- 256bit: 592CA140F0A238B0C61AE162F592CA140F0A238B0C61AE162F21A09C

You must restart your router for these settings to take effect. Press Escape twice to return to the **Main Menu**. Select **Utilities & Diagnostics** and press Return.

7-6 Getting Started Guide



Select **Restart System** and press Return. You will be prompted to confirm this choice. Select **CONTINUE** and press Return.



The router will reboot and your settings will be enabled.

This completes your setup. For more advanced features, refer to the *Firmware User Guide* on your Netopia CD.

Appendix A

Technical Specifications and Safety Information

Description

Dimensions: 7.5" (19.5 cm) (w) x 6.75" (17 cm) (d) x 1.5" (3.5 cm) (h)

Communications interfaces: The Netopia 3387W-ENT Cable/DSL Wireless Router has an RJ-45 jack for WAN line connections and a 4-port 10/100Base-T Ethernet switch for your LAN connections. The Netopia 3387W-ENT contains an 802.11b wireless LAN transmitter.

Power requirements

- 12 VDC input
- 1.0 amps

Environment

Operating temperature: 0° to +40° C

Storage temperature: 0° to +70° C

Relative storage humidity: 20 to 80% noncondensing

Software and protocols

Software media: Software preloaded on internal flash memory; field upgrades done via download to internal flash memory via TFTP.

Routing: TCP/IP Internet Protocol Suite, RIP

WAN support: PPPoE, DHCP, static IP address

Security: PAP, UI password security

Management/configuration methods: Telnet, SNMP V1 and V2

Diagnostics: Ping, event logging, routing table displays, statistics counters

Agency approvals

North America

Safety Approvals:

- United States – UL 60950 Third Edition
- Canada – CSA: CAN/CSA-C22.2 No. 60950-00

EMC:

- United States – FCC Part 15 Class B
- Canada – ICES-003

Telecom:

- United States – FCC Part 68
- Canada – CS-03

International

Safety Approvals:

- Low Voltage (European directive) 73/23
- EN60950 (Europe)

EMI Compatibility:

- 89/336/EEC (European directive)
- EN55022:1994 CISPR22 Class B
- EN300 386 V1.2.1

Regulatory notices

European Community. This Netopia product conforms to the European Community CE Mark standard for the design and manufacturing of information technology equipment. This standard covers a broad area of product design, including RF emissions and immunity from electrical disturbances.

The Netopia 3387W-ENT complies with the following EU directives:

- Low Voltage, 73/23/EEC
- EMC Compatibility, 89/336/EEC, conforming to EN 55 022

Manufacturer's Declaration of Conformance

Note: Warnings:

This is a Class B product. In a domestic environment this product may cause radio interference, in which case the user may be required to take adequate measures. Adequate measures include increasing the physical distance between this product and other electrical devices.

Changes or modifications to this unit not expressly approved by the party responsible for compliance could void the user's authority to operate the equipment.

United States. This equipment has been tested and found to comply with the limits for a Class B digital device, pursuant to Part 15 of the FCC Rules. These limits are designed to provide reasonable protection against harmful interference in a residential installation. This equipment generates, uses, and can radiate radio frequency energy and, if not installed and used in accordance with the instructions, may cause harmful interference to radio communications. However, there is no guarantee that interference will not occur in a particular installation. If this equipment does cause harmful interference to radio or television reception, which can be determined by turning the equipment off and on, the user is encouraged to try to correct the interference by one or more of the following measures:

- Reorient or relocate the receiving antenna.
- Increase the separation between the equipment and receiver.
- Connect the equipment into an outlet on a circuit different from that to which the receiver is connected.
- Consult the dealer or an experienced radio TV technician for help.

Service requirements. In the event of equipment malfunction, all repairs should be performed by our Company or an authorized agent. Under FCC rules, no customer is authorized to repair this equipment. This restriction applies regardless of whether the equipment is in or out of warranty. It is the responsibility of users requiring service to report the need for service to our Company or to one of our authorized agents. Service can be obtained at Netopia, Inc., 6001 Shellmound Street, Emeryville, California, 94608. Telephone: 510-597-5400.

Note: Important

This product was tested for FCC compliance under conditions that included the use of shielded cables and connectors between system components. Changes or modifications to this product not authorized by the manufacturer could void your authority to operate the equipment.

Canada. This Class B digital apparatus meets all requirements of the Canadian Interference -Causing Equipment Regulations.

Cet appareil numérique de la classe B respecte toutes les exigences du Règlement sur le matériel brouilleur du Canada.

Declaration for Canadian users

The Canadian Industry Canada label identifies certified equipment. This certification means that the equipment meets certain telecommunications network protective, operation, and safety requirements. The Department does not guarantee the equipment will operate to the user's satisfaction.

Before installing this equipment, users should ensure that it is permissible to be connected to the facilities of the local telecommunications company. The equipment must also be installed using an acceptable method of connection. In some cases, the company's inside wiring associated with a single line individual service may be extended by means of a certified connector assembly (telephone extension cord). The customer should be aware that compliance with the above conditions may not prevent degradation of service in some situations.

Repairs to the certified equipment should be made by an authorized Canadian maintenance facility designated by the supplier. Any repairs or alterations made by the user to this equipment, or equipment malfunctions, may give the telecommunications company cause to request the user to disconnect the equipment.

Users should ensure for their own protection that the electrical ground connections of the power utility, telephone lines, and internal metallic water pipe system, if present, are connected together. This precaution may be particularly important in rural areas.

Caution

Users should not attempt to make such connections themselves, but should contact the appropriate electric inspection authority, or electrician, as appropriate.

The Ringer Equivalence Number (REN) assigned to each terminal device provides an indication of the maximum number of terminals allowed to be connected to a telephone interface. The termination on an interface may consist of any combination of devices subject only to the requirement that the sum of the Ringer Equivalence Numbers of all the devices does not exceed 5.

Important Safety Instructions

Australian Safety Information

The following safety information is provided in conformance with Australian safety requirements:

Caution

DO NOT USE BEFORE READING THE INSTRUCTIONS: Do not connect the Ethernet ports to a carrier or carriage service provider's telecommunications network or facility unless: a) you have the written consent of the network or facility manager, or b) the connection is in accordance with a connection permit or connection rules.

Connection of the Ethernet ports may cause a hazard or damage to the telecommunication network or facility, or persons, with consequential liability for substantial compensation.

Caution

- The direct plug-in power supply serves as the main power disconnect; locate the direct plug-in power supply near the product for easy access.
- For use only with CSA Certified Class 2 power supply, rated 12VDC, 1.0A.

Telecommunication installation cautions

- Never install telephone wiring during a lightning storm.
- Never install telephone jacks in wet locations unless the jack is specifically designed for wet locations.

Technical Specifications and Safety Information A-5

- Never touch uninsulated telephone wires or terminals unless the telephone line has been disconnected at the network interface.
- Use caution when installing or modifying telephone lines.
- Avoid using a telephone (other than a cordless type) during an electrical storm. There may be a remote risk of electric shock from lightning.
- Do not use the telephone to report a gas leak in the vicinity of the leak.

FCC Part 68 Information

- a) This equipment complies with Part 68 of the FCC rules and the requirements adopted by the ACTA. On the bottom of this equipment is a label that contains, among other information, a product identifier in the format US:AAAEQ##TXXXX. If requested, this number must be provided to the telephone company.
- b) List all applicable certification jack Universal Service Order Codes (“USOC”) for the equipment: RJ11.
- c) A plug and jack used to connect this equipment to the premises wiring and telephone network must comply with the applicable FCC Part 68 rules and requirements adopted by the ACTA. A compliant telephone cord and modular plug is provided with this product. It is designed to be connected to a compatible modular jack that is also compliant. See installation instructions for details.
- d) The REN is used to determine the number of devices that may be connected to a telephone line. Excessive RENs on a telephone line may result in the devices not ringing in response to an incoming call. In most but not all areas, the sum of RENs should not exceed five (5.0). To be certain of the number of devices that may be connected to a line, as determined by the total RENs, contact the local telephone company. For products approved after July 23, 2002, the REN for this product is part of the product identifier that has the format US:AAAEQ##TXXXX. The digits represented by ## are the REN without a decimal point (e.g., 03 is a REN of 0.3). For earlier products, the REN is separately shown on the label.
- e) If this equipment, the Netopia 3300 Series router, causes harm to the telephone network, the telephone company will notify you in advance that temporary discontinuance of service may be required. But if advance notice isn’t practical, the telephone company will notify the customer as soon as possible. Also, you will be advised of your right to file a complaint with the FCC if you believe it is necessary.
- f) The telephone company may make changes in its facilities, equipment, operations or procedures that could affect the operation of the equipment. If this happens the telephone company will provide advance notice in order for you to make necessary modifications to maintain uninterrupted service.
- g) If trouble is experienced with this equipment, the Netopia 3300 Series router, for repair or warranty information, please contact:
- Netopia Technical Support
510-597-5400
www.netopia.com.
- If the equipment is causing harm to the telephone network, the telephone company may request that you disconnect the equipment until the problem is resolved.
- h) This equipment not intended to be repaired by the end user. In case of any problems, please refer to the troubleshooting section of the Product User Manual before calling Netopia Technical Support.
- i) Connection to party line service is subject to state tariffs. Contact the state public utility commission, public service commission or corporation commission for information.

A-6 Getting Started Guide

j) If your home has specially wired alarm equipment connected to the telephone line, ensure the installation of this Netopia 3300 Series router does not disable your alarm equipment. If you have questions about what will disable alarm equipment, consult your telephone company or qualified installer.

RF Exposure Statement:

Note: NOTE: Installation of the wireless models must maintain at least 20 cm between the wireless router and any body part of the user to be in compliance with FCC RF exposure guidelines.

Electrical Safety Advisory

Telephone companies report that electrical surges, typically lightning transients, are very destructive to customer terminal equipment connected to AC power sources. This has been identified as a major nationwide problem. Therefore it is advised that this equipment be connected to AC power through the use of a surge arrester or similar protection device.