

Warranty Registration:
register online today for a
chance to win a FREE Tripp Lite
product—www.tripplite.com/warranty

Quick Start Guide

USB to VGA/DVI Adapter

Model: U244-001-R



Note: This Quick Start Guide contains only basic installation instructions. For more detailed instructions, reference the Owner's Manual on the CD.

Equipment Connection Warning: Use of this equipment in life support applications where failure of this equipment can reasonably be expected to cause the failure of the life support equipment or to significantly affect its safety or effectiveness is not recommended. Do not use this equipment in the presence of a flammable anesthetic mixture with air, oxygen or nitrous oxide.

Copyright © 2008 Tripp Lite. All rights reserved. All trademarks are the property of their respective owners.

Installing the Driver

Caution: DO NOT connect the adapter to your computer before installing the driver

Insert the included driver CD into your computer's CD-ROM drive. The setup program should run automatically. If not, locate and double-click the "Setup.exe" file in the "Driver" folder on the CD. Follow the on-screen prompts to complete installation of the driver.

For Windows Vista® users:

- If you encounter the "User Account Control" dialog box upon installing the driver, either enter the administrator password or click "Allow" to continue with the installation.
- If you encounter the driver signature dialog box upon installing the driver, click "Install this driver software anyway" to continue with the installation.
- Restarting your computer is necessary to successfully install the driver. When prompted to restart your computer, click "Yes." If you are not prompted to restart your computer you should manually restart it.

For Windows® XP users:

- If you encounter the driver signature dialog box upon installing the driver, click "Continue Anyway" to continue with the installation.

For Windows 2000 users:

- If prompted for a system patch after starting the "Setup.exe" file, you must download and install the required patch before installing the driver.

- If you encounter the driver compatibility dialog box upon installing the driver, click "Yes" to continue with the installation.
- Restarting your computer is necessary to successfully install the driver. When prompted to restart your computer, click "Yes." If you are not prompted to restart your computer you should manually restart it.

Connecting the USB Cable to the VGA/DVI Adapter

1. Connect the included USB cable from your computer to the adapter
2. For DVI monitors, connect the adapter to the monitor using a Tripp Lite P560-Series or P561-Series cable (not included).

For VGA monitors, you must first connect the included DVI to VGA adapter to the U244-001-R, and then connect the adapter to the monitor using a Tripp Lite P502-Series or P512-Series cable (not included). Power on your monitor after connecting it to the adapter.

3. Windows Vista and Windows 2000 will automatically complete the installation for you, and the screen from your computer will be displayed on the add-on monitor. If the screen of the add-on monitor is blank, restart the computer. Windows XP will display a "Found New Hardware Wizard." Follow the steps below to complete the installation on Windows XP.

- Select “No, not this time to” ignore Windows Updates and then click “Next.”
- Select “Install the software automatically (Recommended)” and then click “Next.”
- Click “Finish” to complete the installation.
- The computer screen will now be displayed on the add-on monitor.

Note: Before installation is complete, it is normal for the screen to flicker on and off a few times.

Changing the Display Mode

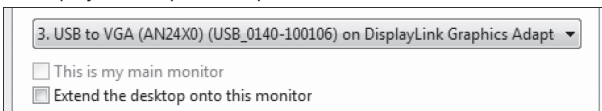
The add-on monitor can be configured to use “Mirror” mode, “Extended” mode or to be the computer’s primary monitor. “Mirror” mode will display the computer screen exactly as it is displayed on the primary monitor. “Extended” mode will extend the computer screen of the primary monitor onto the add-on monitor.

Note: If you’re under Windows Vista Display Driver Model (WDDM) mode, you will only be able to use “Mirror” mode. Also, your Aero™ Experience (Flip 3D effect) will be disabled while the adapter is connected to your computer. Please refer to the Owner’s Manual on the CD for more details.

Using “Mirror” mode:

- Right-click on the desktop of your computer and select “Personalize > Display Settings” (Windows Vista) or “Properties > Settings” (Windows XP and Windows 2000).

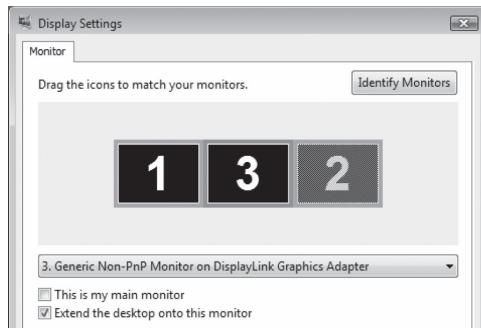
- In the “Display” drop-down menu, select the option that ends with “DisplayLink Graphics Adapter.”



- Uncheck the box labeled “Extend the desktop onto this monitor” (Windows Vista) or “Extend my Windows desktop onto this monitor” (Windows XP or Windows 2000).

Using “Extended” mode:

- Right-click on the desktop of your computer and select “Personalize > Display Settings” (Windows Vista) or “Properties > Settings” (Windows XP and Windows 2000).
- In the “Display” drop-down menu, select the option that ends with “Display Link Graphics Adapter.”



- Check the box labeled “Extend the desktop onto this monitor” (Windows Vista) or “Extend my Windows desktop onto this monitor” (Windows XP or Windows 2000).
- Drag the monitor icons in the middle of the screen so they match the physical arrangement of your primary and add-on monitors.

Note: Depending on your computer, the add-on monitor may be identified as either 2 or 3.

Warranty Registration

Visit www.tripplite.com/warranty today to register the warranty for your new Tripp Lite product. You’ll be automatically entered into a drawing for a chance to win a FREE Tripp Lite product!*

** No purchase necessary. Void where prohibited. Some restrictions apply. See website for details.*

Tripp Lite follows a policy of continuous improvement. Product specifications are subject to change without notice.

Made in China



1111 W. 35th Street, Chicago, IL 60609 USA
(773) 869-1234 • www.tripplite.com

200803171
93-2774