

PLAYSKOOL

Cherry Blossom MARKET

A PART OF THE DREAM TOWN™ COLLECTION

AGES 3+

THANKS FOR
PURCHASING THE
CHERRY BLOSSOM MARKET.
PLEASE READ AND RETAIN
THESE INSTRUCTIONS.

68625

**ADULT ASSEMBLY
REQUIRED.**

For video assembly instructions, please visit
www.cherryblossommarket.com

⚠ WARNING:
**KEEP ALL FLAME
AND HEAT SOURCES
AWAY FROM THE
CHERRY BLOSSOM™
MARKET FABRIC.**

This Market meets the flammability requirements of CPAI-84. The fabric may burn if left in continuous contact with any flame source. The application of any foreign substance to the Market fabric may render the flame resistant properties ineffective.



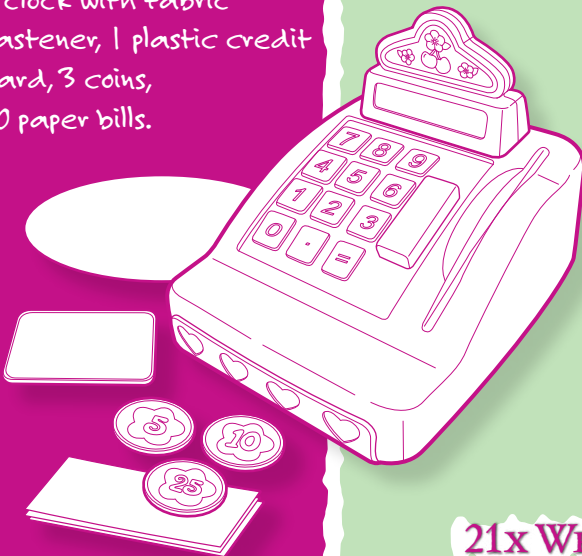
FABRIC MARKET COVER



INCLUDES:

ALSO INCLUDES:

1 cash register
(1 register top section
and 1 register base unit),
1 clock with fabric
fastener, 1 plastic credit
card, 3 coins,
10 paper bills.

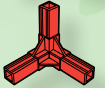


16x CONNECTORS

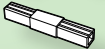
2 x #1 front bottom connectors (red)



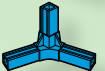
2 x #2 back bottom connectors (red)



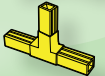
5 x #3 straight connectors (white)



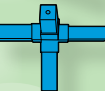
2 x #4 roof base end connectors (blue)



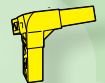
2 x #6 Tee connectors (yellow)



1 x #7 roof base middle connector (blue)



1 x #8 roof peak left connector (yellow)

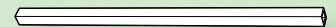


1 x #9 roof peak right connector (yellow)



21x WHITE FRAME TUBES

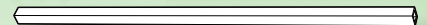
8 x #1



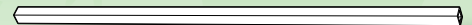
6 x #2



4 x #3



3 x #4



FRAME ASSEMBLY:

PARTS REQUIRED

FOR THIS STEP:

All connectors
All frame tubes

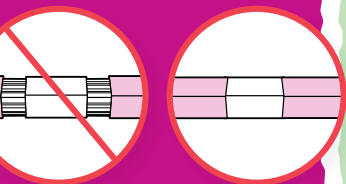
TAKE SURE

CONNECTORS ARE

PUSHED INTO THE

TUBES AS FAR AS THEY

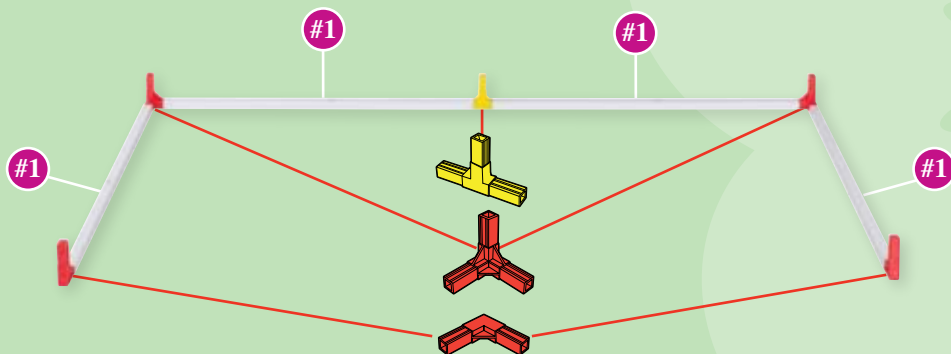
WILL GO.



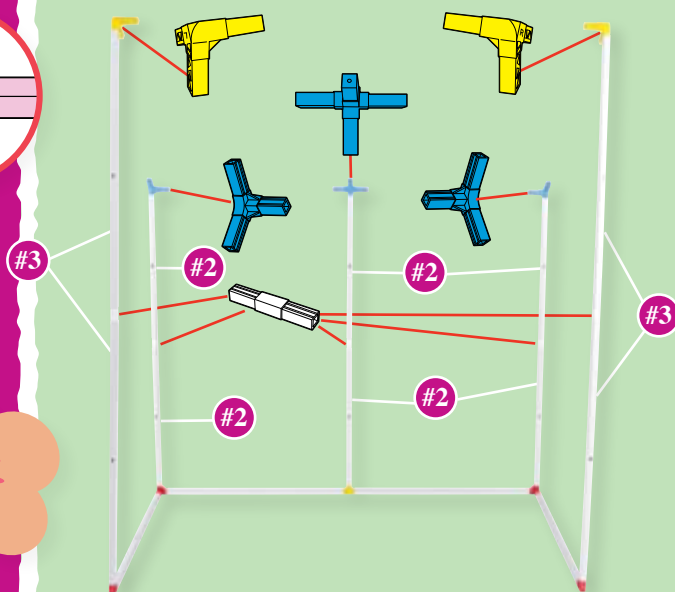
ASSEMBLE FRAME AS SHOWN.

THIS WILL BE DONE IN THREE STEPS:

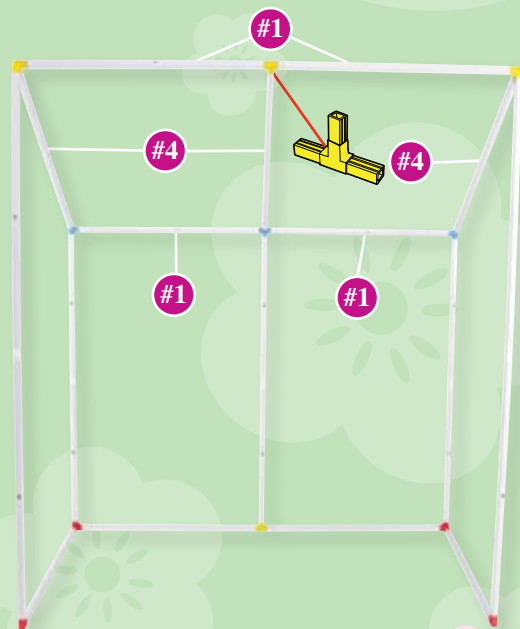
1. Assemble the base - the four tubes and five connectors that lay on the floor.



2. Add all the vertical posts with the connectors on the top.



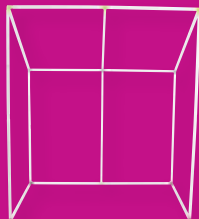
3. Finish by adding the tubes and connectors for the roof.



CHERRY BLOSSOM Market Cover:

PARTS REQUIRED FOR THIS STEP:

- Completed Frame



- CHERRY BLOSSOM Market Cover



CHERRY BLOSSOM Market Cover

1. Assemble white frame as shown on page 2.
2. Remove the CHERRY BLOSSOM Market cover from the bag.
3. Completely unzip the front edge of the CHERRY BLOSSOM Market, and detach the fabric fasteners around the window.

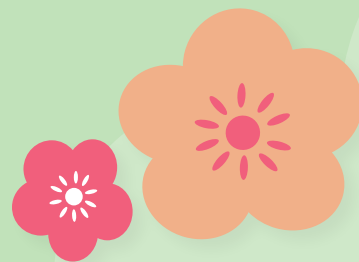


4. Lay the CHERRY BLOSSOM Market cover out with the printed tile floor up.



Fold the inside wall over the tile floor and lay the outside wall around the outside of the floor, exposing the red seam between the two walls.





5. Set the frame directly on top of the red seams.



Note: Place frame exactly as shown.

6. Lift the inside wall and fasten the hook and loop fasteners around the roof tubes as shown.


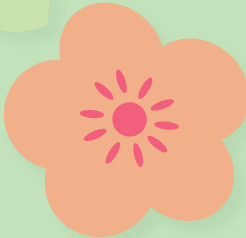


7. Lift the outside wall completely over the frame.



8. Zip the inside and outside walls together around the front of the Market.





9. Place the front awning over the peak of the roof.



10. Adjust hook-and-loop fastener attachments around both windows.



11. Attach clock with hook-and-loop fastener. Place clock wherever you like!





CASH REGISTER ASSEMBLY:

TO ASSEMBLE CASH REGISTER:

Snap register top section into register base unit as shown.



STORAGE:



Quick, simple storage with THE ROSE PETAL™ COTTAGE

Cottage and accessories shown each sold separately.



© 2007 Hasbro. All Rights Reserved.
TM & ® denote U.S. Trademarks.

© 2007 Worlds Apart Ltd. All rights Reserved. PN# 6793750000

FOR THE ENTIRE
DREAM TOWN™ COLLECTION

Visit
PLAYSKOOL
.com

Questions? Call 1-800-PLAYSKL