



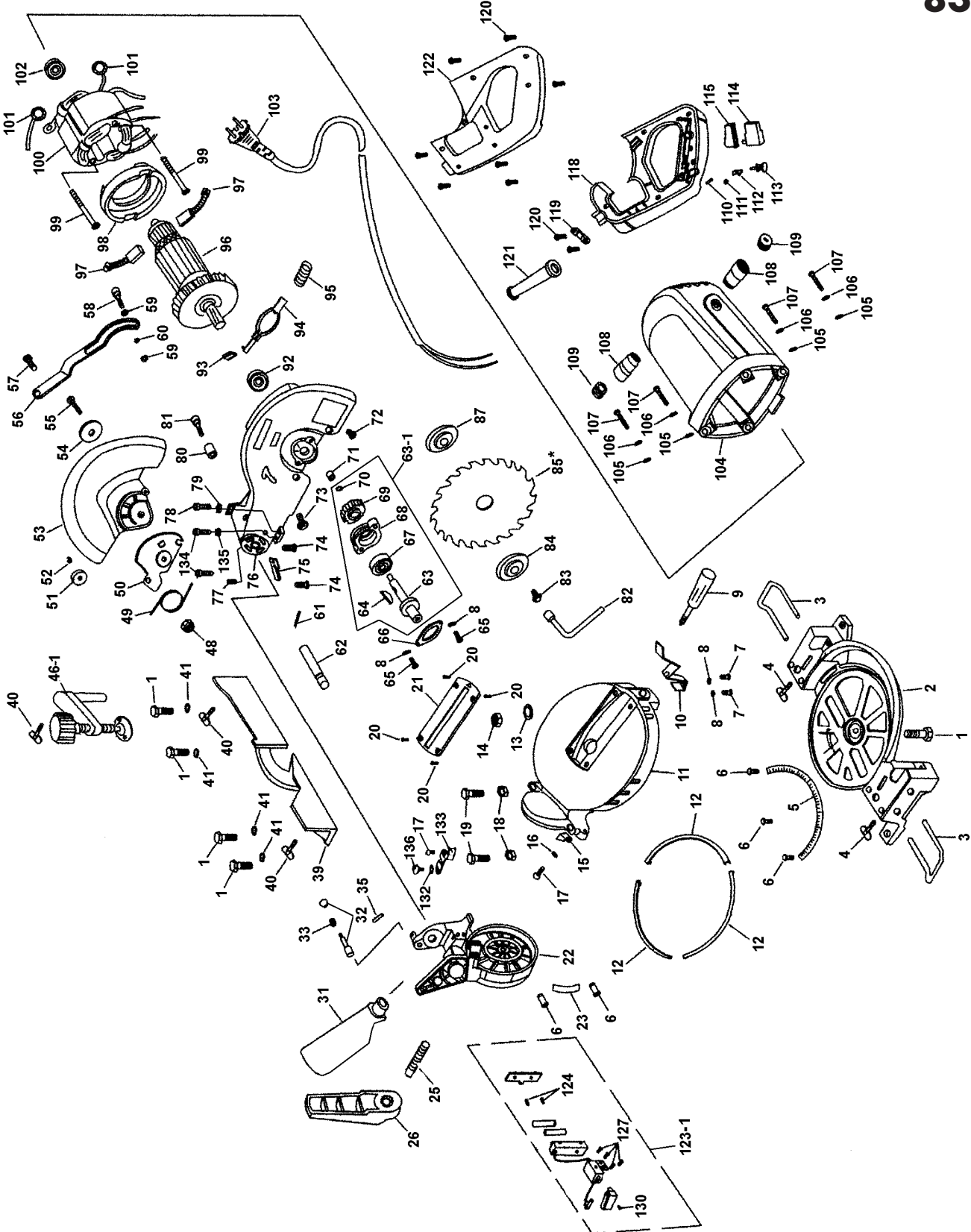
Service Manual / Manuel de Service

10" Compound Miter Saw with Laser Scie à Onglets 10" à Angles Composés avec Laser



Revised/Revisé 08/2008

8324





Parts Pricing List / Liste de Prix des Pièces

8324

| Diag. | Order # Com. | English Description | Description Française | Qty./Qté. | Price/Prix |
|-------|--------------|--------------------------|-----------------------------------|-----------|------------|
| 1 | 7683240010 | HEX. BOLT | BOULON HEXAGONAL | 5 | \$2.01 |
| 2 | 7683240020 | BASE | BASE | 1 | \$68.94 |
| 3 | 7683240030 | EXTENSION WING | RALLONGE DE TABLE | 2 | \$11.21 |
| 4 | 7683240040 | EXTENSION WING LOCK KNOB | BOUTON DE VERROUILLAGE/RALLONGE | 2 | \$3.05 |
| 5 | 7683240050 | MITER SCALE | ECHELLE DE L'ONGLET | 1 | \$6.84 |
| 6 | 7683240060 | RIVET | RIVET | 5 | \$1.44 |
| 7 | 7683240070 | PAN HD SCREW | VIS A TETE BOMBEE | 2 | \$1.55 |
| 8 | 7683240080 | SPRING WASHER | RONDELLE A RESSORT | 4 | \$1.55 |
| 9 | 7683240090 | MITER LOCK KNOB | POIGNEE DE VERROUILLAGE | 1 | \$9.14 |
| 10 | 7683240100 | INDEX SPRING | RESSORT DE L'INDEX | 1 | \$10.29 |
| 11 | 7683240110 | TABLE | TABLE | 1 | \$45.94 |
| 12 | 7683240120 | SLIDING RAIL | RAIL DE COULISSEMENT | 3 | \$9.14 |
| 13 | 7683240130 | WASHER | RONDELLE | 1 | \$1.55 |
| 14 | 7683240140 | NYLON HEX. NUT | ECROU HEXAGONAL AVEC NYLON | 1 | \$1.67 |
| 15 | 7683240150 | ANGLE INDICATOR | INDICATEUR D'ANGLE | 1 | \$2.59 |
| 16 | 7683240160 | SPRING WASHER | RONDELLE A RESSORT | 1 | \$1.55 |
| 17 | 7683240170 | PAN HD SCREW | VIS A TETE BOMBEE | 2 | \$1.55 |
| 18 | 7683240180 | HEX. NUT | ECROU HEXAGONAL | 2 | \$1.61 |
| 19 | 7683240190 | HEX. BOLT | BOULON HEXAGONAL | 2 | \$1.78 |
| 20 | 7683240200 | COUNTERSUNK HD SCREW | VIS A TETE FRAISEE | 4 | \$1.67 |
| 21 | 7683240210 | TABLE INSERT | INSERTION DE TABLE | 1 | \$10.29 |
| 22 | 7683240220 | PIVOT BRACKET | SUPPORT DU PIVOT | 1 | \$45.94 |
| 23 | 7683240230 | BEVEL SCALE | ECHELLE DU BISEAU | 1 | \$5.46 |
| 24 | 7683240240 | WASHER | RONDELLE | 1 | \$1.67 |
| 25 | 7683240250 | THREADED STUD | TIGE FILETEE | 1 | \$13.74 |
| 26 | 7683240260 | BEVEL LOCK HANDLE | POIGNEE DE VERROUILLAGE DU BISEAU | 1 | \$7.30 |
| 31 | 7683240310 | DUST BAG | SAC DE POUSSIERE | 1 | \$14.89 |
| 32 | 7683240320 | HEAD LOCKING PIN | GOUPILLE DE VERROUILLAGE | 1 | \$3.39 |
| 33 | 7683240330 | SPRING | RESSORT | 1 | \$2.47 |
| 35 | 7683240350 | SPRING PIN | GOUPILLE A RESSORT | 1 | \$1.67 |
| 39 | 7683240390 | FENCE | GUIDE | 1 | \$26.39 |
| 40 | 7683240400 | WISE LOCK KNOB | BOUTON DE VERROUILLAGE DE L'ETAU | 3 | \$3.05 |
| 41 | 7683240410 | SPRING WASHER | RONDELLE A RESSORT | 4 | \$1.67 |
| 46-1 | 7683240461 | COMPLETE VISE ASSEMBLY | ETAU COMPLETE ASSEMBLE | 1 | \$20.53 |
| 48 | 7683240480 | NYLON HEX. NUT | ECROU HEXAGONAL AVEC NYLON | 1 | \$2.01 |
| 49 | 7683240490 | TORSION SPRING | RESSORT DE TORSION | 1 | \$4.54 |
| 50 | 7683240500 | RETAINING PLATE | PLAQUE DE RETENUE | 1 | \$5.69 |
| 51 | 7683240510 | PLASTIC ROLLER | ROULETTE DE PLASTIQUE | 1 | \$3.16 |
| 52 | 7683240520 | RETAINING RING ("E") | ANNEAU DE RETENU EN "E" | 1 | \$1.55 |
| 53 | 7683240530 | BLADE GUARD | PROTEGE-LAME | 1 | \$18.34 |
| 54 | 7683240540 | WASHER | RONDELLE | 1 | \$2.13 |
| 55 | 7683240550 | PAN HD SCREW | VIS A TETE BOMBEE | 1 | \$1.55 |
| 56 | 7683240560 | GUARD OPENING SHAFT | TIGE D'OUVERTURE | 1 | \$5.69 |
| 57 | 7683240570 | SPECIAL SCREW | VIS SPECIALE | 1 | \$2.59 |
| 58 | 7683240580 | SPECIAL SCREW | VIS SPECIALE | 1 | \$2.59 |
| 59 | 7683240590 | WASHER | RONDELLE | 2 | \$1.55 |
| 60 | 7683240600 | ROLLER | ROULETTE | 1 | \$2.47 |

Pricing subject to change without prior notice. / Prix sujet à changement sans préavis.



Parts Pricing List / Liste de Prix des Pièces

8324

| Diag. | Order # Com. | English Description | Description Française | Qty./Qté. | Price/Prix |
|-------|--------------|------------------------------|----------------------------------|-----------|------------|
| 61 | 7683240610 | TORSION SPRING | RESSORT A TORSION | 1 | \$2.82 |
| 62 | 7683240620 | PIVOT SHAFT | TIGE DE PIVOTEMENT | 1 | \$5.46 |
| 63 | 7683240630 | SPINDLE SHAFT | TIGE DE L'ARBRE | 1 | \$14.89 |
| 63-1 | 7683240631 | SPINDLE & GEAR ASSEMBLY | ARBRE & ENGRENAGE ASSEMBLE | 1 | \$57.44 |
| 64 | 7683240640 | KEY | CLE DE RETENUE | 1 | \$2.47 |
| 65 | 7683240650 | PAN HD SCREW | VIS A TETE BOMBEE | 2 | \$1.73 |
| 66 | 7683240660 | BEARING COVER | COUVERCLE DU ROULEMENT | 1 | \$5.69 |
| 67 | 7683240670 | BALL BEARING | ROULEMENT A BILLES | 1 | \$12.59 |
| 68 | 7683240680 | BEARING SEAT | SIEGE DU ROULEMENT | 1 | \$6.15 |
| 69 | 7683240690 | GEAR | ENGRENAGE | 1 | \$29.73 |
| 70 | 7683240700 | RETAINING RING/SHAFT | ANNEAU DE RETENU/TIGE | 1 | \$2.24 |
| 71 | 7683240710 | NEEDLE BEARING | ROULEMENT A AIGUILLES | 1 | \$16.73 |
| 72 | 7683240720 | SPECIAL SCREW | VIS SPECIALE | 1 | \$2.59 |
| 73 | 7683240730 | FLANGE HD BOLT | BOULON HEXAGONAL TETE BRIDEE | 1 | \$1.78 |
| 74 | 7683240740 | COUNTERSUNK HD SCREW | VIS A TETE FRAISEE | 2 | \$1.55 |
| 75 | 7683240750 | GUARD BLOCK | BLOQUEUR DU GARDE | 1 | \$4.43 |
| 76 | 7683240760 | UPPER BLADE GUARD | PROTEGE-LAME DU HAUT | 1 | \$57.44 |
| 77 | 7683240770 | SET SCREW | VIS SANS TETE | 1 | \$1.55 |
| 78 | 7683240780 | HEX. BOLT | BOULON HEXAGONAL | 1 | \$2.07 |
| 79 | 7683240790 | SPECIAL NUT | ECROU SPECIAL | 1 | \$3.62 |
| 80 | 7683240800 | RUBBER BUMPER | AMORTISSEUR EN CAOUTCHOUC | 1 | \$3.39 |
| 81 | 7683240810 | SPECIAL SCREW | VIS SPECIALE | 1 | \$2.59 |
| 82 | 7683240820 | SOCKET WRENCH (13MM) | CLE AVEC DOUILLE (13MM) | 1 | \$6.84 |
| 83 | 7683240830 | FLANGE HD BOLT (LEFT) | BOULON A TETE BRIDEE (GAUCHE) | 1 | \$3.28 |
| 84 | 7683240840 | BLADE FLANGE | RONDELLE DE LA LAME | 1 | \$4.54 |
| 85 | KSC-1080T | BLADE | LAME | 1 | - |
| 87 | 7683240870 | BLADE FLANGE | RONDELLE DE LA LAME | 1 | \$4.54 |
| 92 | 7683240920 | BALL BEARING | ROULEMENT A BILLES | 1 | \$11.44 |
| 93 | 7683240930 | SPINDLE LOCK BUTTON | BOUTON DU VERROU DE L'ARBRE | 1 | \$2.59 |
| 94 | 7683240940 | SPINDLE LOCK | VERROU DE L'ARBRE | 1 | \$6.84 |
| 95 | 7683240950 | SPRING | RESSORT | 1 | \$3.16 |
| 96 | 7683240960 | ARMATURE | ARMATURE | 1 | \$91.94 |
| 97 | 7683240970 | CARBON BRUSH SET (2) | JEU DE BALAIS AU CARBONE (2) | 1 | \$12.59 |
| 98 | 7683240980 | FAN BAFFLE | DEFLECTEUR DU VENTILATEUR | 1 | \$6.27 |
| 99 | 7683240990 | TAPPING SCREW (SQUARE POINT) | VIS AUTOTARAUDEUSE (POINTE CAR.) | 2 | \$3.39 |
| 100 | 7683241000 | FIELD COIL | BOBINE D'ENTRAINMENT | 1 | \$51.69 |
| 101 | 7683241010 | CARBON BRUSH WIRE | FIL DES BALAIS DE CARBONE | 2 | \$2.24 |
| 102 | 7683241020 | BALL BEARING | ROULEMENT A BILLES | 1 | \$12.59 |
| 103 | 7683241030 | POWER CORD | CORDON D'ALIMENTATION | 1 | \$13.74 |
| 104 | 7683241040 | MOTOR HOUSING | BOITIER DU MOTEUR | 1 | \$25.13 |
| 105 | 7683241050 | WASHER | RONDELLE | 4 | \$1.55 |
| 106 | 7683241060 | SPRING WASHER | RONDELLE A RESSORT | 4 | \$1.55 |
| 107 | 7683241070 | PAN HD SCREW | VIS A TETE BOMBEE | 4 | \$2.59 |
| 108 | 7683241080 | BRUSH HOLDER | SUPPORT DU BALAI | 2 | \$5.46 |
| 109 | 7683241090 | BRUSH CAP | CAPUCHON DU BALAI | 2 | \$3.39 |
| 110 | 7683241100 | PIN | GOUPILLE | 1 | \$2.47 |
| 111 | 7683241110 | SPRING | RESSORT | 1 | \$2.82 |

Pricing subject to change without prior notice. / Prix sujet à changement sans préavis.



Parts Pricing List / Liste de Prix des Pièces

8324

| Diag. | Order # Com. | English Description | Description Française | Qty./Qté. | Price/Prix |
|-------|--------------|------------------------------|----------------------------------|-----------|------------|
| 112 | 7683241120 | SAFETY BUTTON CAM | CAME DU BOUTON DE SECURITE | 1 | \$3.16 |
| 113 | 7683241130 | SAFETY SWITCH BUTTON | BOUTON DE L'INTERRUPTEUR DE SEC. | 1 | \$3.39 |
| 114 | 7683241140 | SWITCH | INTERRUPTEUR | 1 | \$14.78 |
| 115 | 7683241150 | SWITCH TRIGGER | GACHETTE DE L'INTERRUPTEUR | 1 | \$4.54 |
| 118 | 7683241180 | LEFT HANDLE | POIGNEE GAUCHE | 1 | \$17.19 |
| 119 | 7683241190 | CORD CLAMP | ATTACHE CORDON | 1 | \$2.24 |
| 120 | 7683241200 | TAPPING SCREW (SQUARE POINT) | VIS AUTOTARAUDEUSE (POINTE CAR.) | 9 | \$1.67 |
| 121 | 7683241210 | CORD PROTECTOR | PROTEGE-CORDON | 1 | \$3.39 |
| 122 | 7683241220 | RIGHT HANDLE | POIGNEE DROITE | 1 | \$17.19 |
| 123-1 | 7683241231 | LASER ASSEMBLY | LASER ASSEMBLE | 1 | \$22.83 |
| 124 | 7683241240 | COUNTERSUNK HD SCREW | VIS A TETE FRAISEE | 2 | \$1.67 |
| 127 | 7683241270 | PAN HD SCREW | VIS A TETE BOMBEE | 4 | \$1.55 |
| 130 | 7683241300 | TAPPING SCREW (POINT) | VIS AUTOTARAUDEUSE (POINTE) | 1 | \$1.55 |
| 132 | 7683241320 | WAVE WASHER | RONDELLE ONDULEE | 1 | \$1.67 |
| 133 | 7683241330 | STOPPER BRACKET | SUPPORT D'ARRET | 1 | \$4.54 |
| 134 | 7683241340 | CAP SCREW | BOULON A TETE CYLINDRIQUE | 2 | \$2.70 |
| 135 | 7683241350 | HEX. NUT | ECROU HEXAGONAL | 1 | \$1.67 |
| 136 | 7683241360 | SPECIAL SCREW | VIS SPECIALE | 1 | \$2.59 |
| | 768324MBIL | BILINGUAL MANUAL 8324 | MANUEL BILINGUE 8324 | 1 | \$15.00 |