

INSTALLATION



DX9000RM-KIT



C644M (1/04)

CONTENTS

Section	Page
DESCRIPTION	3
INSTALLATION	4
BIOS CONFIGURATION PROCEDURE	4
GHOST PROCEDURE	6
LOADING RAID MANAGER SOFTWARE	6
RAID MANAGER INSTALLATION	12
CONFIGURE THE RAID MANAGER SERVER	16

LIST OF ILLUSTRATIONS

Figure	Page
1 CMOS Setup Utility	4
2 Advanced BIOS Features	5
3 Save to CMOS Prompt	5
4 Raid Manager Folder Copy Procedure	6
5 DX9000 Recorder	7
6 Login Window	7
7 Recorder Applications	8
8 Viewstation Name	8
9 Additional Installs Folder	9
10 Raid Manager Folder	10
11 Raid Manager Software Copy Procedure	11
12 Setup Program Folder	12
13 Welcome Dialog Box	12
14 Software License Agreement Dialog Box	13
15 Choose Destination Location Dialog Box	13
16 Select Components Dialog Box	14
17 Raid Manager Server Component	14
18 Select Program Folder Dialog Box	15
19 Detect Option Dialog Box	16
20 Raid Manager Watch Window	16
21 Run at Windows Startup Menu Option	17
22 Remove at Windows Startup Menu Option	17

DESCRIPTION

The DX9000RM-KIT allows you to upgrade DX9000 recorders and viewstations with the same RAID Manager software that is found in DX9200 recorders and DX9100 viewstations. To perform the upgrade, you need the following:

- DX9000RM-KIT
- DX9000 recorder with external IDE storage unit
- DX9000 viewstation

INSTALLATION

Make sure the following parts are included with your kit.

- 1 Viewstation Disk #1
- 1 Viewstation Disk #2
- 1 Viewstation Disk #3
- 1 Recorder Disk
- 1 Floppy Ghost Disk

NOTE: You must write down your system's name and IP address, and export all videos before starting these procedures.

BIOS CONFIGURATION PROCEDURE

This procedure allows you to boot from the CD-ROM.

1. Turn the viewstation on.
2. Press Delete each time you are prompted during startup. The following screen appears.

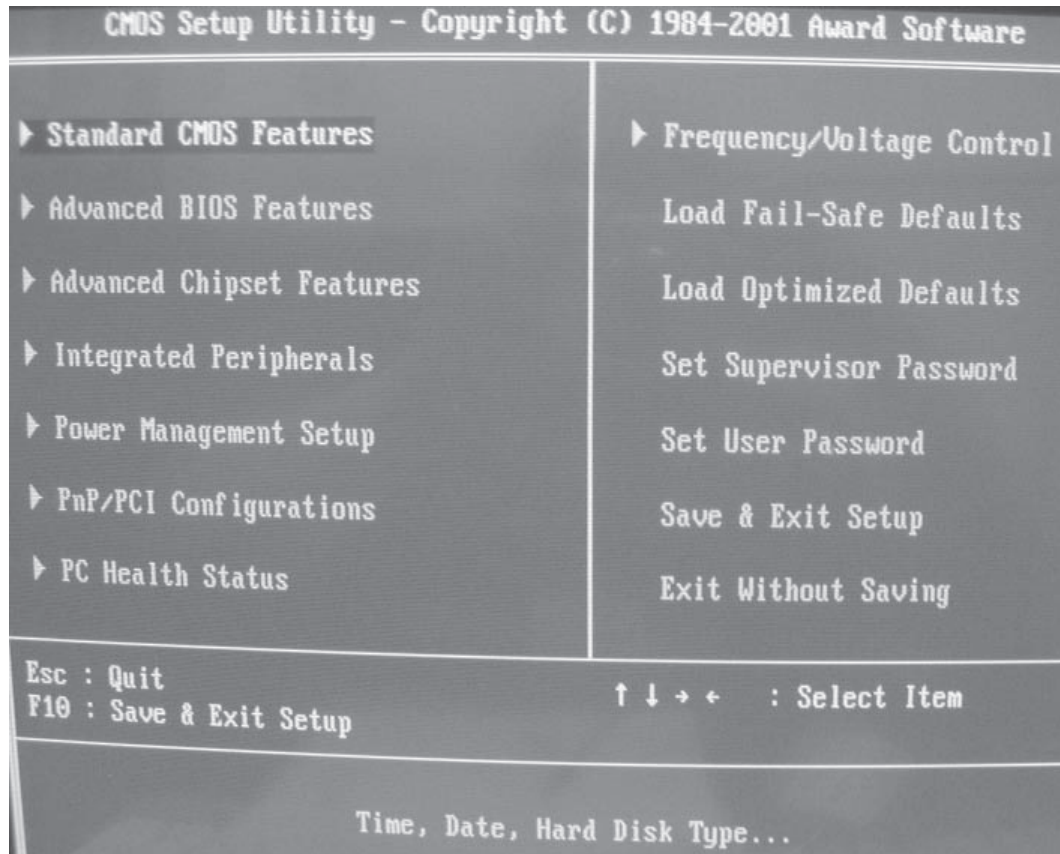


Figure 1. CMOS Setup Utility

3. Select Advanced BIOS Features, and then press Enter. The following screen appears.

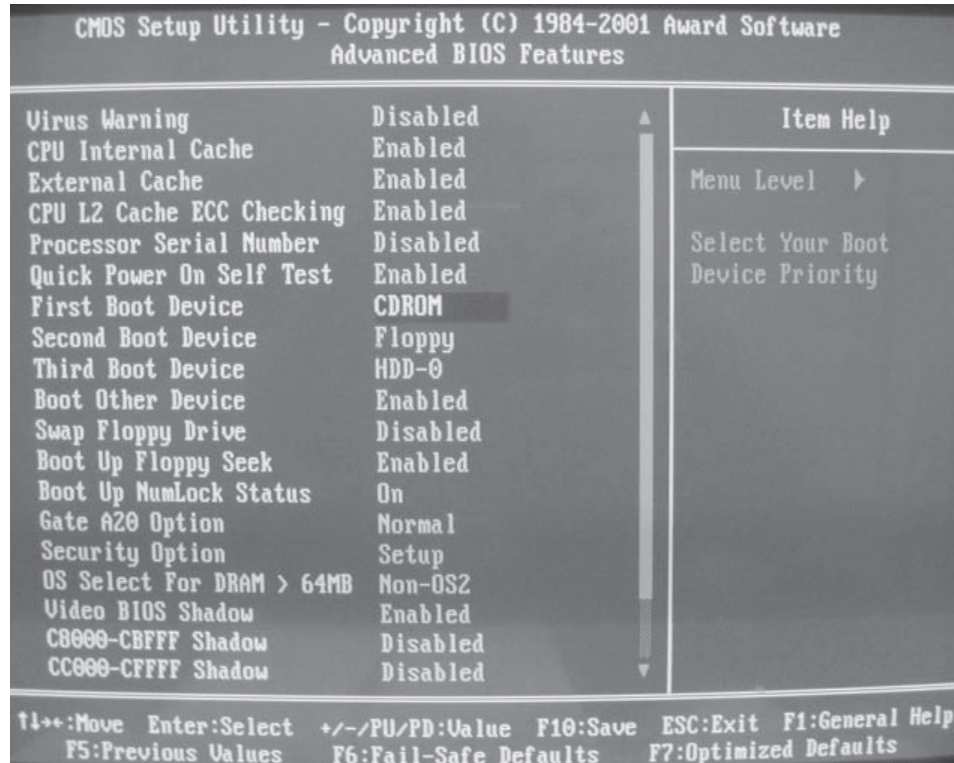


Figure 2. Advanced BIOS Features

4. Select CDROM as the First Boot Device, and then press Enter.
5. Select Floppy as the Second Boot Device, and then press Enter.
6. Select HDD-0 as the Third Boot Device, and then press Enter.
7. Press Esc.
8. Press F10. The following prompt appears.

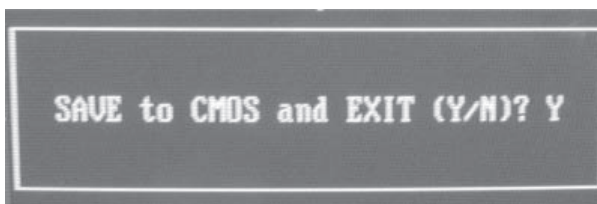


Figure 3. Save to CMOS Prompt

9. Press Y. The system restarts.

GHOST PROCEDURE

This procedure allows you to configure your master viewstation.

1. Close all applications on the viewstation.
2. Insert Viewstation Disk #1 (CD-DX9000RM-VS1) into the CD-ROM drive of the viewstation.
3. Go to Start > Shutdown > Restart.
4. Press Enter at the Norton Ghost boot screen. Ghost starts the installation process.
5. Insert Viewstation Disk #2 (CD-DX9000RM-VS2) when requested, and then press Enter.
6. Insert Viewstation Disk #3 (CD-DX9000RM-VS3) when requested, and then press Enter. You will see the A:\>Prompt when the process is complete.
7. Remove Viewstation Disk #3, and then press Ctrl+Alt+Del. The viewstation starts and performs a scan disk operation, restarts automatically, and then prompts you to restart again.
8. Left-click the Yes button, and then close any error messages that appear.
9. Configure the date and time, IP address, network identification, and Client Configuration Utility on your master viewstation. Refer to the DX9000 Viewstation Operation manual.
10. Configure the web page address, Internet Explorer settings, the recorders, and the Event Notification settings. Refer to the *RAID Manager Utility* and *RAID Manager Home Page* sections in the DX9200 Digital Video Recorder & DX9100 Viewstation Installation manual.

LOADING RAID MANAGER SOFTWARE

The following steps show how to install the RAID Manager software on DX9000 recorders.

1. Load the RAID Manager software (CD-DX9000RM-R1) into the CD-ROM drive of any viewstation.
2. Copy the Raid Manager folder from the CD-ROM to the C:\Additional Installs folder on the viewstation.

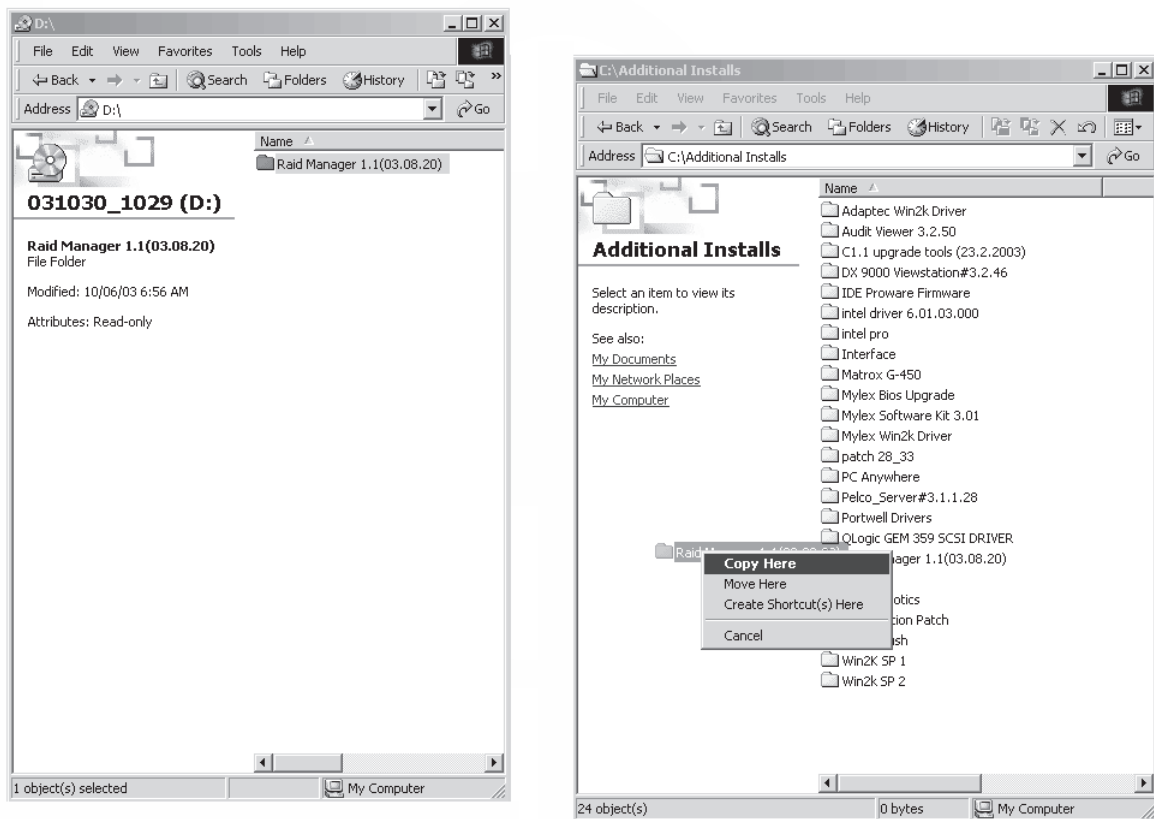


Figure 4. Raid Manager Folder Copy Procedure

- Use pcAnywhere™ remote control software to select the recorder you wish to install the RAID Manager software on. Figure 5 shows a recorder named PELCO124.

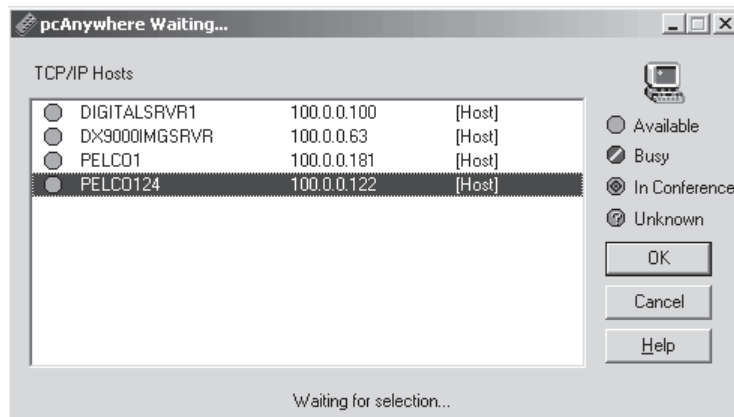


Figure 5. DX9000 Recorder

- Click OK. The login window appears.

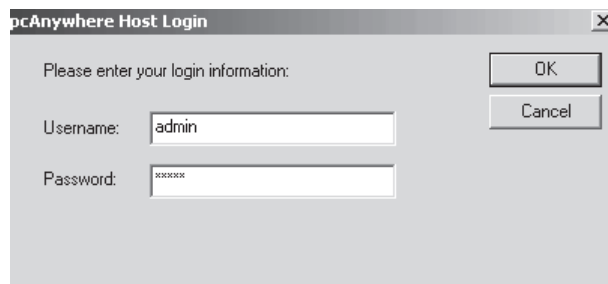


Figure 6. Login Window

- Enter your username and password. The default username is **admin** and the default password is **admin**.

- Click OK. The following window appears.

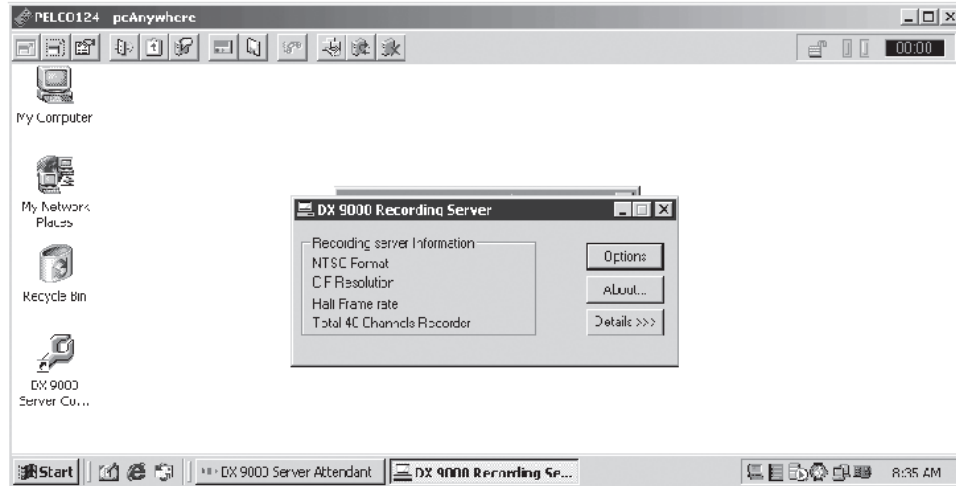


Figure 7. Recorder Applications

- Close all applications on the recorder, such as the DX9000 Recording Server application and DX9000 Server Attendant application.
- Go to Start > Run and enter **\\viewstation name\C\$** where **viewstation name** is the actual name of the viewstation. Figure 8 shows a viewstation name of **pelcovs1**.

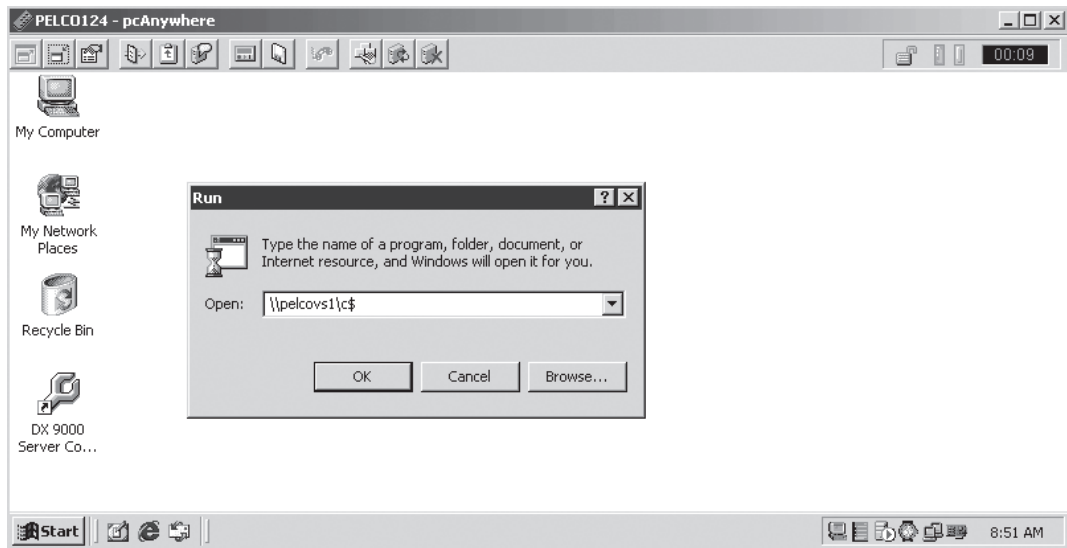


Figure 8. Viewstation Name

- Click OK. The login window appears.

10. Enter your username and password. The default username is **admin** and the default password is **1234**. The following window appears.

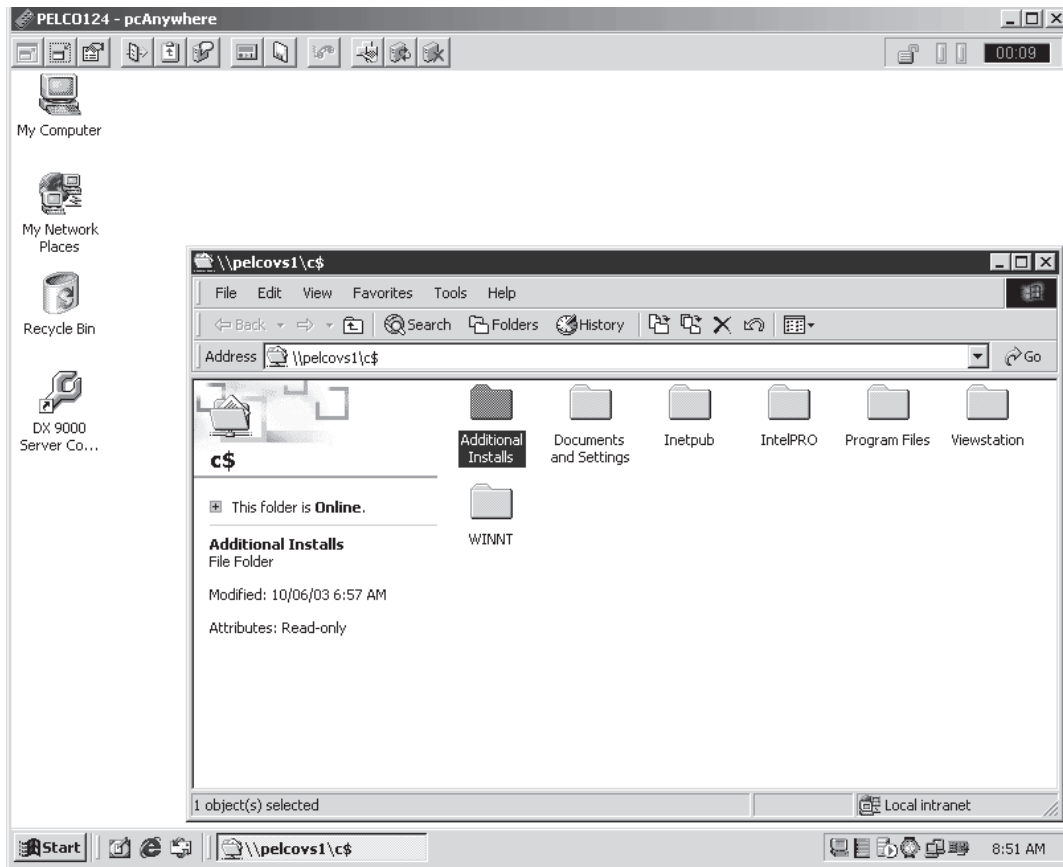


Figure 9. Additional Installs Folder

11. Open the Additional Installs folder on the viewstation. The following window appears.

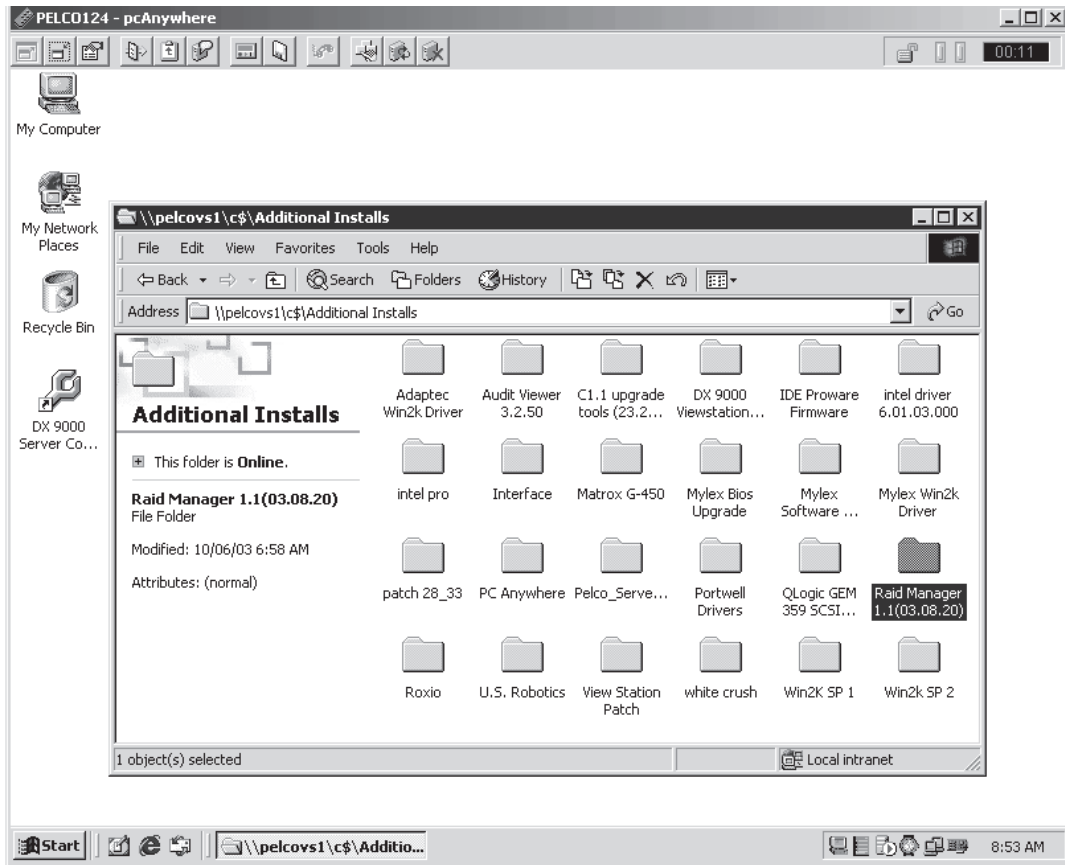


Figure 10. Raid Manager Folder

- Copy the RAID Manager software on the viewstation to the Additional Installs folder on the recorder.

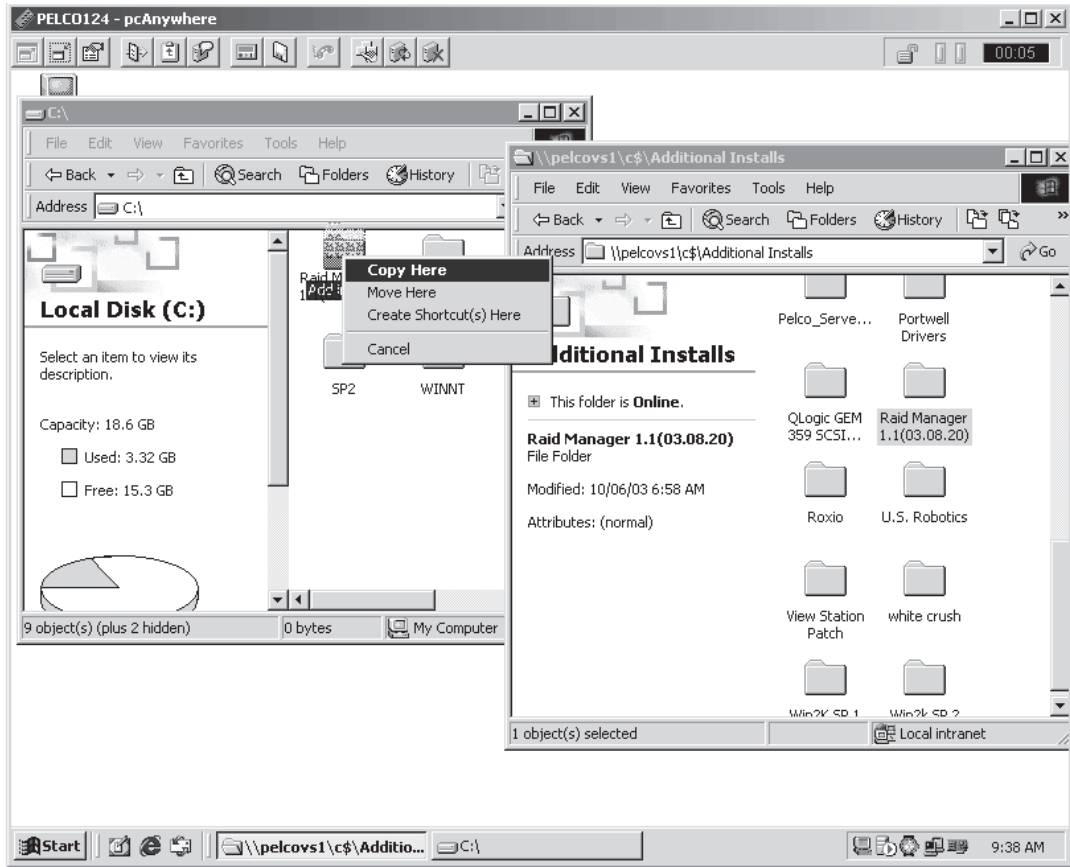


Figure 11. Raid Manager Software Copy Procedure

- Close the network connection to the viewstation and install the Raid Manager.

RAID MANAGER INSTALLATION

Before you install this utility on the recorder, you must install it on the administrator viewstation.

1. Open the Additional Installs folder on the recorder. The following window appears.

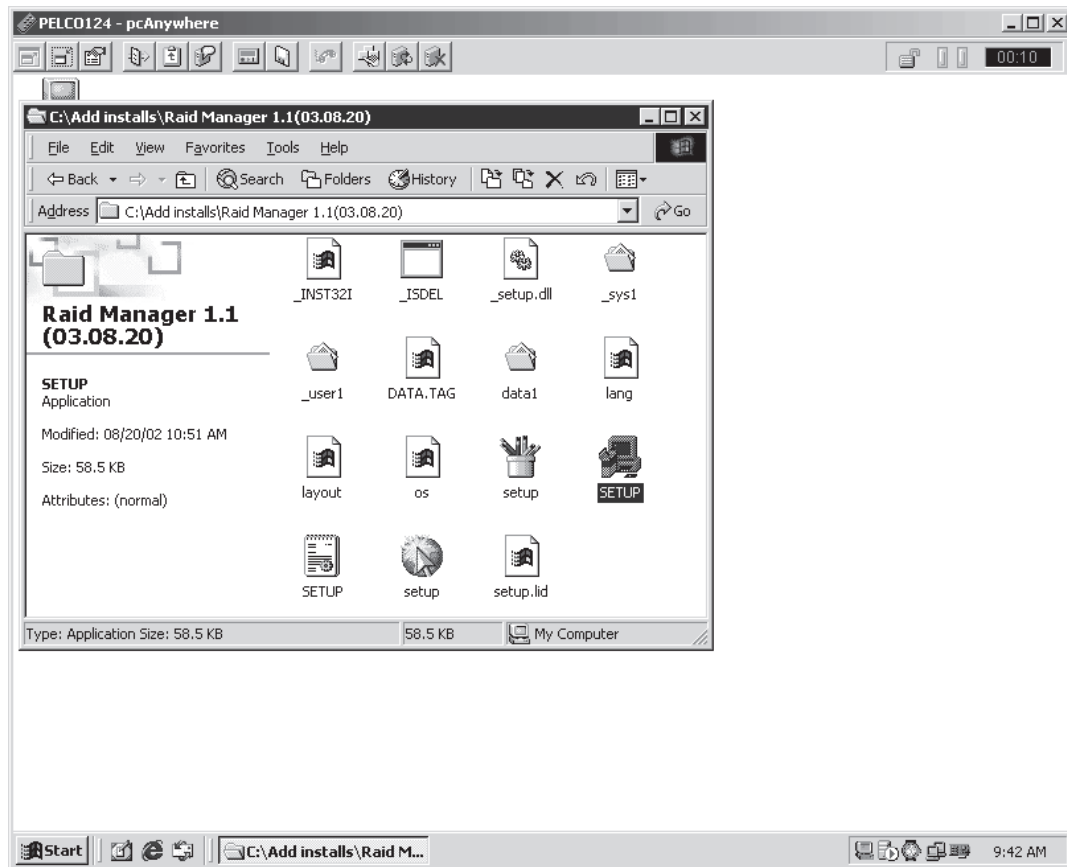


Figure 12. Setup Program Folder

2. Double-click SETUP. The following dialog box appears.



Figure 13. Welcome Dialog Box

3. Click Next. The following dialog box appears.

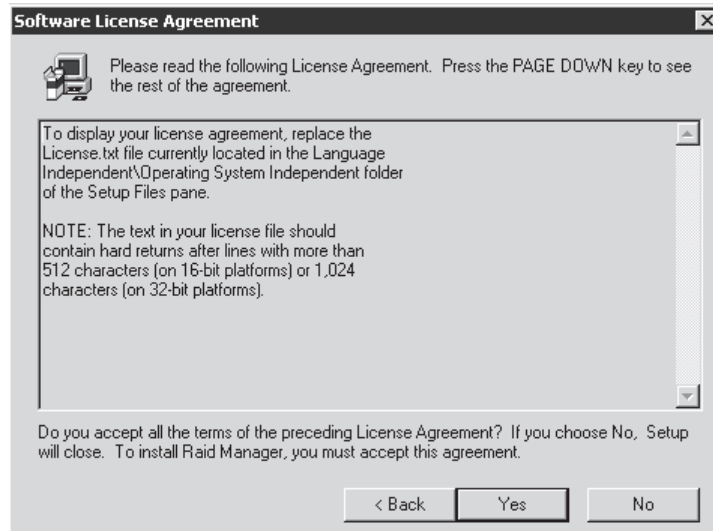


Figure 14. Software License Agreement Dialog Box

4. Click Yes. The following dialog box appears.



Figure 15. Choose Destination Location Dialog Box

- Click Next. The following dialog box appears.

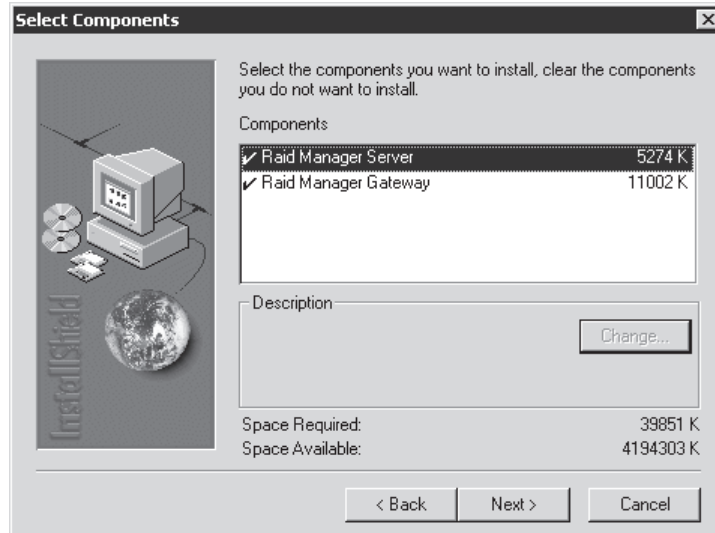


Figure 16. Select Components Dialog Box

- Select Raid Manager Server, and then click Next. The following dialog box appears.

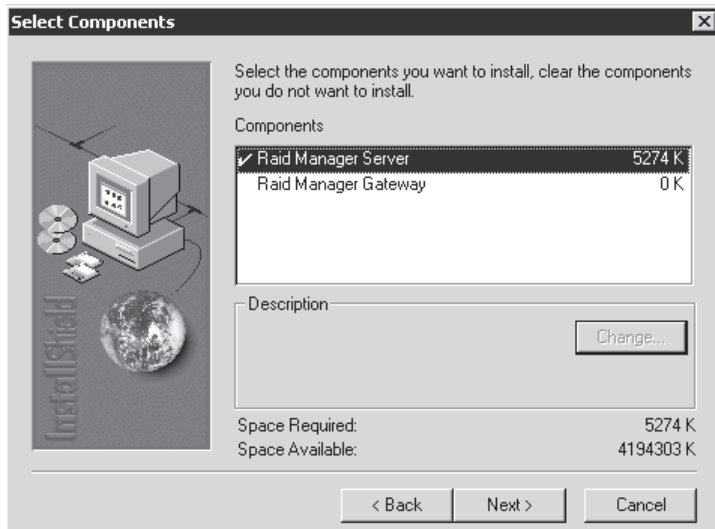


Figure 17. Raid Manager Server Component

7. Click Next. The following dialog box appears.

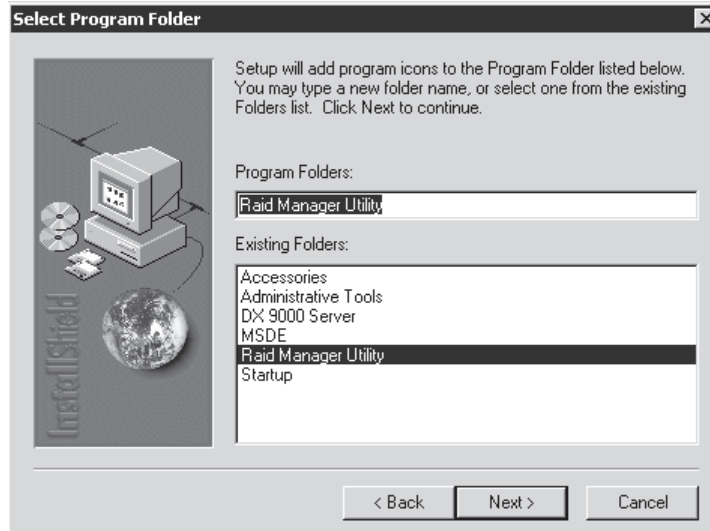


Figure 18. Select Program Folder Dialog Box

8. Click Next and then Finish.

CONFIGURE THE RAID MANAGER SERVER

1. Go to Start > Programs > Raid Manager Utility > Raid Manager Server > Raid Manager Server. The following dialog box appears.

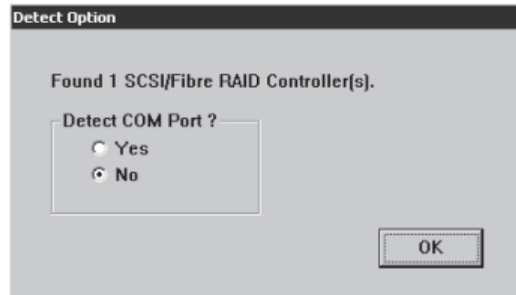


Figure 19. Detect Option Dialog Box

2. Verify that the process found "1 SCSI/Fiber RAID Controller."
3. Select No, and then click OK. The following window appears.

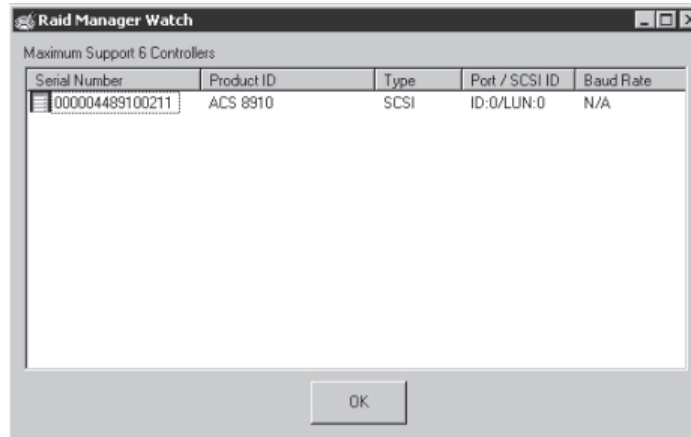


Figure 20. Raid Manager Watch Window

4. Verify that the RAID Utility detected the SCSI unit.
5. Click OK. The Raid Manager Server icon appears on the taskbar.

6. Right-click the Raid Manager Server icon. The following menu appears.

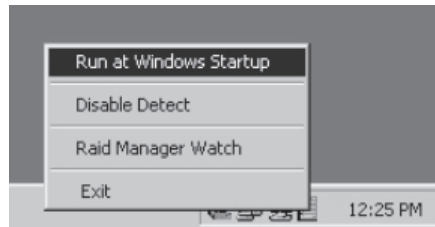


Figure 21. Run at Windows Startup Menu Option

7. Select "Run at Windows Startup."
8. Right-click the icon again to verify that "Run at Windows Startup" changed to "Remove from Windows Startup."
9. Select Disable Detect and verify that Enable Detect appears.

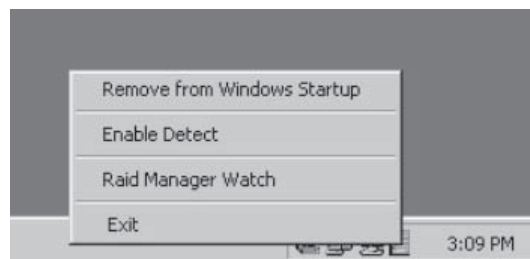


Figure 22. Remove at Windows Startup Menu Option

10. Restart the recorder.

REVISION HISTORY

Manual #	Date	Comments
C644M	1/04	Original version.

® Pelco and the Pelco logo are registered trademarks of Pelco.
® Windows is a registered trademark of Microsoft Corporation.
™ pcAnywhere is a trademark of Symantec.

© Copyright 2004, Pelco.
All rights reserved.



World Headquarters
3500 Pelco Way
Clovis, California 93612 USA

USA & Canada
Tel: 800/289-9100
Fax: 800/289-9150

International
Tel: 1-559/292-1981
Fax: 1-559/348-1120

www.pelco.com

ISO9001

Orangeburg, New York | Las Vegas, Nevada | Eindhoven, The Netherlands | Wokingham, United Kingdom | Montreal, Canada
Singapore