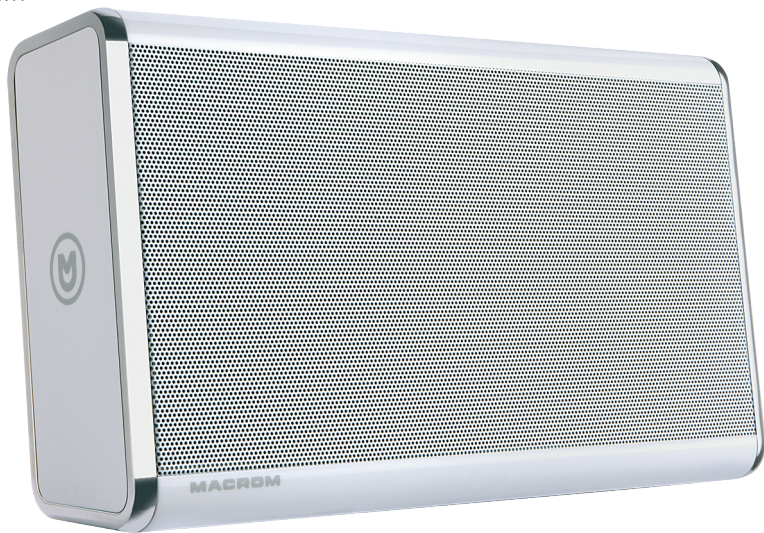




WIRELESS SPEAKER

USER MANUAL MANUALE UTENTE

M-BTP50.B
M-BTP50.W



MACROM





Table of contents

EN	Warranty	3
	Specifications	3
	Product overview	4
	Charge the battery	5
	Indicator LED status	5
	Switch On/Off	5
	Pairing and connecting with a Bluetooth device	6
	Re-connecting with a Bluetooth device	6
	Disabling the Bluetooth connection	6
	Adjust the Volume	6
	Listen to music	7
	Auxiliary input	7
	USB charging port	8
	Product care	8
	Package contents	8
IT	Garanzia	9
	Specifiche	9
	Panoramica del prodotto	10
	Caricare la batteria	11
	Stato indicatori LED	11
	Accensione e spegnimento	11
	Pairing e connessione ad un dispositivo Bluetooth	12
	Connessione con un dispositivo Bluetooth	12
	Disattivazione della connessione Bluetooth	12
	Regolare il volume	12
	Ascoltare la musica	13
	Ingresso ausiliario	13
	Porta USB di ricarica	14
	Cura del prodotto	14
	Contenuto della confezione	14





Warranty

Thank you for purchasing this Macrom product. Should your product need warranty service, please return it to the shop where you buy it or to the Macrom distributor in your country. The warranty does not cover damage due to improper use and or installation, incorrect connections to power supply and audio video sources, exposure to excessive humidity, unauthorized repair attempts or modifications.

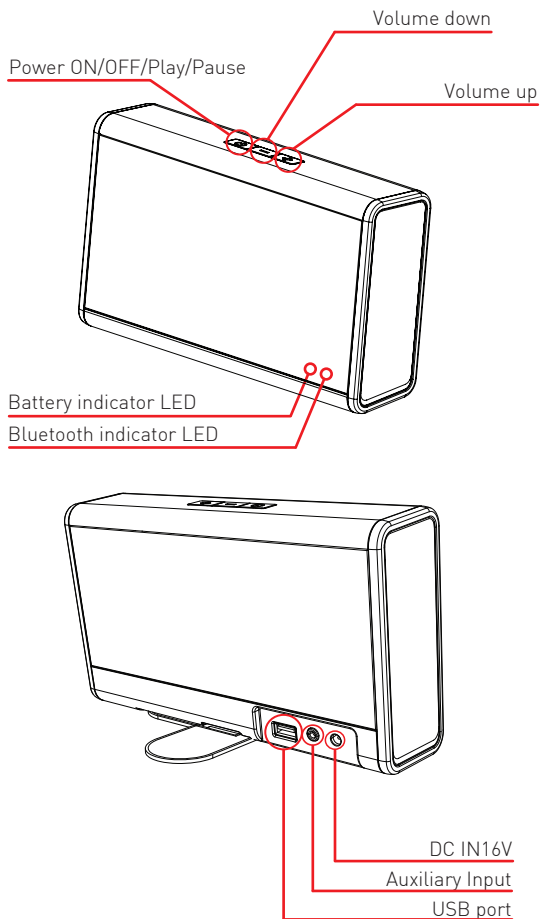
Specifications

M-BTP50 can play music from a compatible music player. The operating range is within 10 meters. M-BTP50 is compliant with the following Bluetooth® specifications: Bluetooth V4.0 with aptX® Technology and supports A2DP profile. Auxiliary audio input 3,5 mm audio connector. Power supply input AC 100-240V ~ 50/60Hz. M-BTP50 includes a USB port on the back to allow you to charge a mobile device (5V DC - 0.5 A).



EN

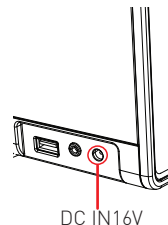
Product overview





Charge the battery

Connect the supplied AC adapter to the back of M-BTP50. Plug the supplied AC adapter into a wall power outlet to begin charging M-BTP50's internal battery. The battery indicator LED is steady orange while charging and will turn off when the battery is fully charged. For a faster charge please remember to power off the unit before charging the battery. Full charge time is approx 4 hours.



Indicator LED status



Bluetooth indicator LED

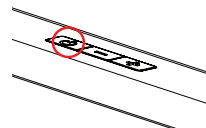
- Blinking blue LED: Bluetooth on with no connection (ready to pair).
- Solid blue LED: Bluetooth paired and connected.

Battery indicator LED

- Orange LED: Charging (When plugged into a wall outlet)
- Red LED: Low battery (When running on the built-in battery)

Switch On/Off

- To switch ON, press and hold the  key about 3 seconds until the speaker prompts 2 ascending tone and the Bluetooth indicator LED starts blinks.
- To switch OFF, press and hold the  key about 3 seconds until the speaker prompts 4 descending tone and the Bluetooth indicator LED will shut off.





Pairing and connecting with a Bluetooth device

Power on the M-BTP50. The blue LED blinks. From the Bluetooth function of the device to be paired search for new device named "M-BTP50". Select it and if requested enter "0000" passcode. When pairing is completed successfully the pairing indicator LED is blue steady and the unit prompts two tones. If the pairing procedure is not successful, please switch off the unit and repeat the above steps. The specific pairing procedure may vary, so please refer to your device user manual for further information.

Re-connecting with a Bluetooth device

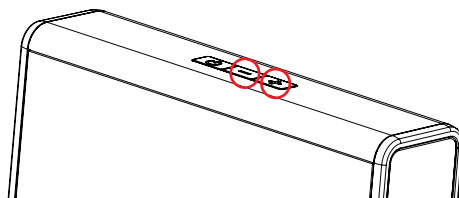
Every time the unit is switched on, it will connect to the last connected device automatically and the unit prompts two tones when is connected.

Disabling the Bluetooth connection

To unpair a Bluetooth device that is already connected, turn off bluetooth connection on the connected device. The M-BTP50 will be in pairing mode.

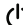
Adjust the Volume

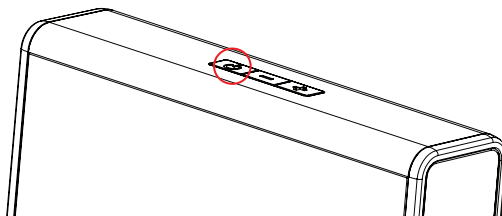
To adjust the unit volume while listening to music press the volume up or down keys.





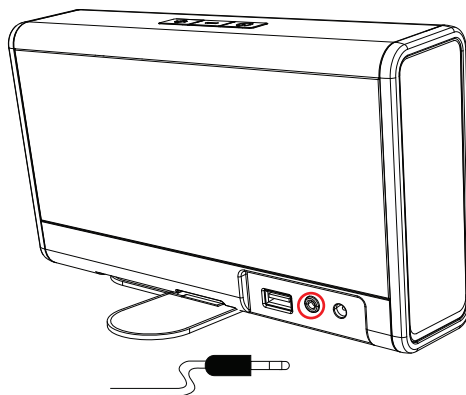
Listen to music

Connect the unit to a compatible music player that supports A2DP profile. To play or pause music from the unit short press  key.



Auxiliary input

To connect a device to the auxiliary input use the cable provided with the unit. If a connector is plugged in the auxiliary input the Bluetooth function is automatically disabled. Bluetooth functions is automatically resumed when the connector is removed from the auxiliary input.





USB charging port

M-BTP50 includes a USB port on the back to allow you to charge a mobile device. Plug M-BTP50 into a wall outlet and then connect your device to the USB port using USB cable (not included).

Note: The charging of mobile devices using the USB port is only allowed if the M-BTP50 is plugged into a wall outlet. Power output of the USB port is 500mA. Media devices that require more power may not charge through this USB port.

Product care

Please remember that your Macrom product is an electronic device, and so needs to be treated with care.

- Do not subject it to mechanical shock or vibrations.
- Do not subject it to excessive heat.
- Keep it away from water and excessively humid areas.
- Keep it away from high electromagnetic fields.

There are no user-serviceable parts inside. Opening the product or try to repair it will terminate the warranty.

Package contents

- M-BTP50 wireless speaker.
- Power supply: AC 100-240V - 50/60Hz - DC OUT 16V/1.8 A.
- Auxiliary audio cable with 3.5 mm jack connectors.
- Carrying case.
- User manual.