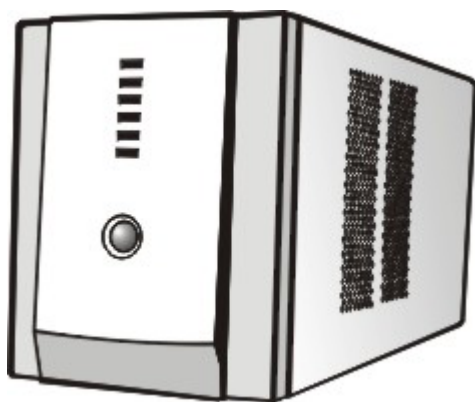


USER MANUAL
for
Line Interactive 1000/1400/2000VA UPS



Uninterruptible Power System

IMPORTANT SAFETY INSTRUCTIONS

SAVE THESE INSTRUCTIONS – This manual contains important instructions for models Line Interactive 1000/1400/2000 that should be followed during installation and maintenance of the UPS and batteries.

Safety – CAUTION!

- This UPS utilizes voltages that may be hazardous. Do not attempt to disassemble the unit. The unit contains no user serviceable parts. Only factory service personnel may perform repairs.
- Internal battery voltage is 24Vdc. Sealed, lead-acid, 6 cells battery.
- Connection to any other type of receptacle other than a two-pole, three-wire grounding receptacle may result in a shock hazard as well as violate local electrical codes.
- In the event of an emergency, turn the power switch to the “off” position and disconnect the power cord from the AC power supply to properly disable the UPS
- Do not allow any liquids or any foreign object to enter the UPS. Do not place beverages or any other liquid-containing vessels on or near the unit.
- This unit intended for installation in a controlled environment (temperature controlled, indoor area free of conductive contaminants). Avoid installing the UPS in locations where there is standing or running water, or excessive humidity.
- Do not plug the UPS input into its own output.
- Do not attach a power strip or surge suppressor to the UPS.
- Do not attach non-computer-related items, such as medical equipment, life-support equipment, microwave ovens, or vacuum cleaners to UPS
- To reduce the risk of overheating the UPS, do not cover the UPS' cooling vents and avoid exposing the unit to direct sunlight or installing the unit near heat emitting appliances such as space heaters or furnaces.
- Unplug the UPS prior to cleaning and do not use liquid or spray detergent.
- Do not dispose of battery or batteries in a fire. The battery may explode.
- Do not open or mutilate the battery or batteries. Released electrolyte is harmful to the skin and eyes. It may be toxic.
- A battery can present a risk of electrical shock and high short circuit current. The following precautions should be observed when working on batteries :
 - 1) Remove watches, rings, or other metal objects from the hand.
 - 2) Use tools with insulated handles.
 - 3) Wear rubber gloves and boots.
 - 4) Do not lay tools or metal parts on the top of batteries.
 - 5) Disconnect charging source prior to connecting or disconnecting batteries terminal.

- Servicing of batteries should be performed or supervised by qualified personnel knowledgeable of batteries and the required precautions. Keep unauthorized personnel away from batteries.
- When replacing batteries, replace with the same number of the sealed lead-acid batteries.
- This pluggable type A equipment with battery already installed by the supplier is operator installable and may be operated by laymen.
- During the installation of this equipment it should be assured that the sum of the leakage currents of the UPS and the connected loads does not exceed 3.5mA.
- The mains socket outlet that supplies the UPS shall be installed near the UPS and shall be easily accessible.

Wichtige Sicherheitshinweise

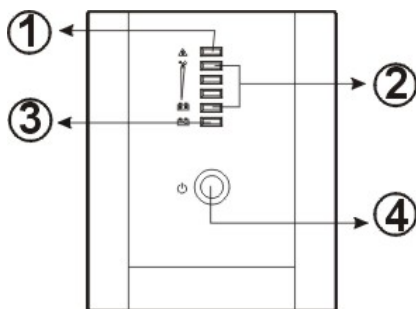
Bitte lesen Sie diese Hinweis sorgfältig durch.

- Vor jedem Reinigen ist das Gerät vom Stromnetz zu trennen. Verwenden Sie keine Flüssig- oder Aerosolreiniger. Am besten eignet sich ein angefeuchtetes Tuch zur Reinigung.
- Das Gerät ist vor Feuchtigkeit zu schützen.
- Öffnen Sie niemals das Gerät. Das Gerät darf aus Gründen der elektrischen Sicherheit nur von autorisiertem Servicepersonal geöffnet werden.
- Bei der Installation ist darauf zu achten, dass der Gesamtbleitstrom der USV und der and der USV angeschlossenen Verbraucher den Maximalwert von 3.5mA nicht überschreiten.
- VORSICHT: Explosionsgefahr bei unsachgemäßen Austausch der Batterie. Ersatz nur durch denselben oder einem vom Hersteller empfohlenen ähnlichen Typ. Entsorgung gebrauchter Batterien nach Angaben des Herstellers.

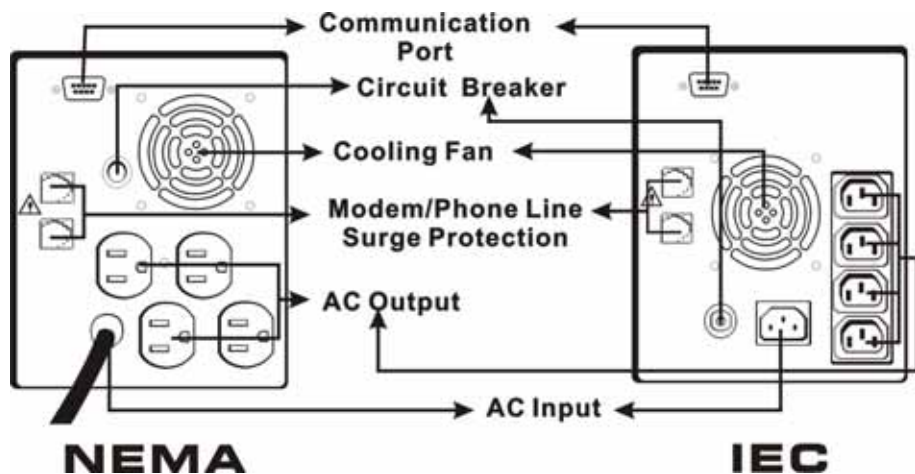
System Description

Front Panel—

1. Fault LED
2. AC Mode: Load Level LEDs
Backup Mode: Battery Capacity LEDs
3. AC Mode: Green Lighting
Backup Mode: Green Flashing
4. Power “ON/OFF” Switch



Back Panel—



Installation and Operation

Installing the UPS is as easy as following the steps shown. Be aware of the Power Switch must be kept in the "ON" position, otherwise, the UPS will be disabled and your equipment will not be protected during a power failure.

1. Inspection

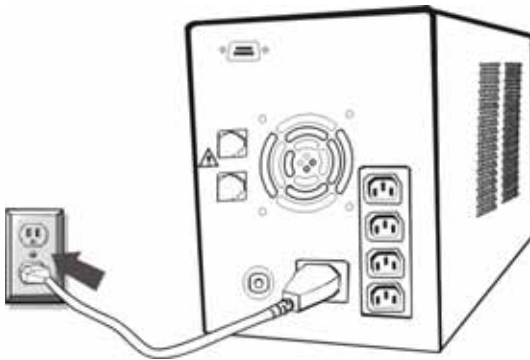
Remove the UPS from its packaging and inspect it for damage that may have occurred during shipping. If any damage is discovered, repack the unit and return it to the place of purchase.

2. Placement

Install the UPS unit in any protected environment that provides adequate airflow around the unit, and is free from excessive dust, corrosive fumes and conductive contaminants. Do not operate your UPS in an environment where the ambient temperature or humidity is high. On the other hand, place the UPS unit away from monitor at least 20cm to avoid interference.

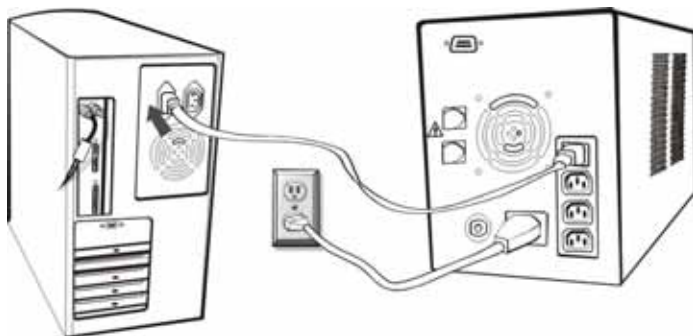
3. Charging

This unit is shipped from the factory with its internal battery fully charged, however, some charge may be lost during shipping and the battery should be recharged prior to use. Plug the unit into an appropriate power supply and allow the UPS to charge fully by leaving it plugged in for at least 8 hours.



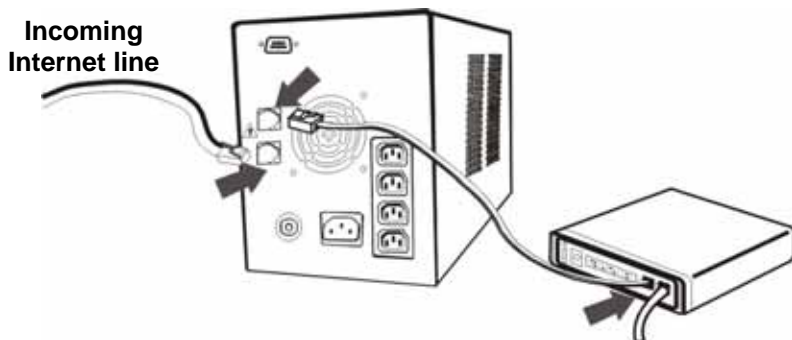
4. Computer Connection

Connect one computer-related device into each of the power receptacles supplied on the back of the UPS (maximum of three devices).



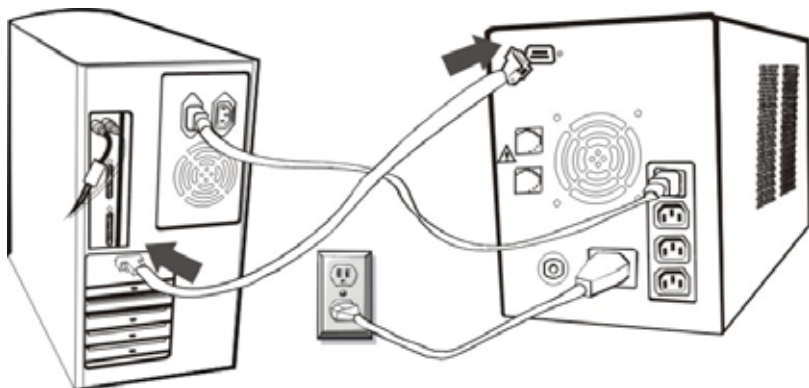
5. Modem/Phoneline Connection

Plug incoming internet line into the "In" socket at the back of the UPS. Use one more Internet line cable and plug one end of the Internet line cable to the "Out" socket at the back of the UPS. Plug the other end to the modem input socket as shown.



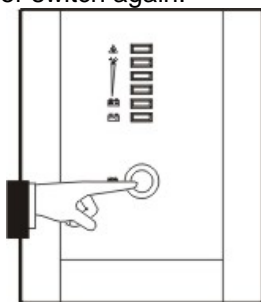
6. Serial Cable Connection

To allow for unattended system shutdown for your operating system, connect the serial cable as per diagram below.



7. Turn On/Off

To turn on the UPS unit, press the power switch lightly. To turn off the UPS unit, press the power switch again.



8. DC Start Function

DC Start Function enables UPS to be started up when AC utility power is not available and battery is fully charged. Just simply press the power switch to turn on the UPS.

9. Battery Removal

Follow the Chart 1 to Chart 3 to replace the batteries. Disconnecting all sources of supply before battery replacement.

Remove the front panel



Chart 1

Remove the battery cover



Chart 2

After removing battery cover, gently extract the battery by disconnecting the two wires connecting to the Blazer. Be sure to replace the same type of batteries and dispose of old batteries properly at an appropriate recycling facility.

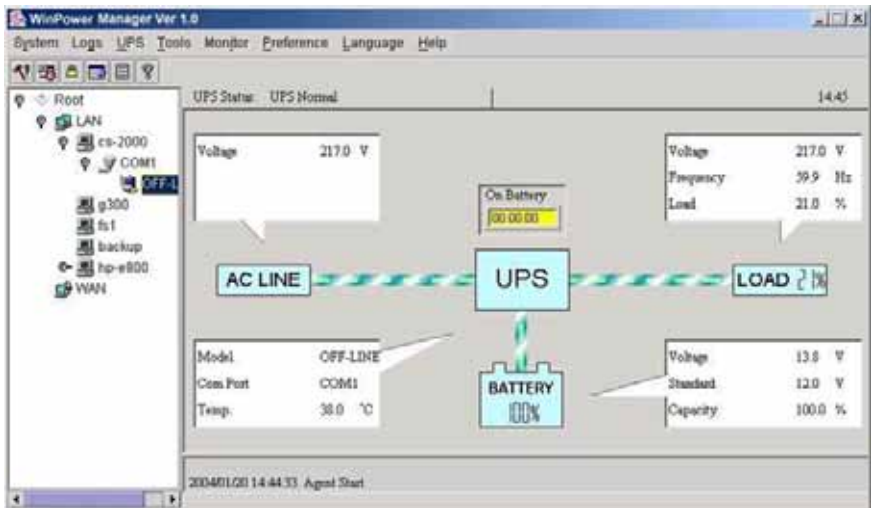


Chart 3

Software Installation

-- WinPower --

WinPower is a brand new UPS monitoring software, which provides user-friendly interface to monitor and control your UPS. This unique software provides safely auto shutdown for multi-computer systems while power failure. With this software, users can monitor and control any UPS on the same LAN no matter how far from the UPS.



Installation procedure:

1. Go to the website:
<http://www.ups-software-download.com/winpower.htm>
2. Choose the operation system you need and follow the instruction described on the website to download the software.
3. When downloading all required files from the internet, enter the serial No: 511C1-01220-0100-478DF2A to install the software.

When your computer restarts, the WinPower software will appear as a green plug icon located in the system tray, near the clock.

Trouble Shooting

Symptom	Possible Cause	Remedy
No LED display on the front panel.	1. Missing battery.	1. Charge battery up to 8 hours.
	2. Battery defect.	2. Replace with the same type of battery.
	3. Power switch is not pressed.	3. Press power switch again.
Alarm buzzer beeps continuously when AC supply is normal.	Overload of the UPS.	Verify that the load matches the UPS capability specified in the specs.
When power failure, back-up time is shorten.	1. Overload of the UPS.	1. Remove some noncritical load.
	2. Battery voltage is too low.	2. Charge battery 8 hours or more.
	3. Battery defect due to high temperature operation environment, or improper operation to battery.	3. Replace with the same type of battery.
Communication lost between UPS and computer.	1. Software is not installed well.	1. Check the setting of the software .
	2. Cable is not properly connected.	2. Check the RS-232 cable is firmly connected to COM1/COM2 of the computer and confirm the setting again.
Mains normal but the UPS is not working.	1. Circuit breaker is broken.	1. Reset the circuit breaker..
	2. Power cord is loose.	2. Reconnect the power cord properly.

If any abnormal situations occur that are not listed above, please call service people immediately.

Specification

MODEL		1000	1400	2000
CAPACITY	VA/W	1000VA/600W	1400VA/840W	2000VA/1080W
INPUT	Voltage	115VAC or 220/230/240VAC		
	Voltage Range	85-140VAC / 162-290VAC		
OUTPUT	Voltage	115VAC or 220/230/240VAC		
	Voltage Regulation (Battery Mode)	+/- 10%		
	Frequency	50Hz or 60Hz		
	Frequency Regulation (Battery Mode)	+/- 1 Hz		
	Output Waveform	Modified Sinewave		
BATTERY	Battery Type	12V7Ah x 2pcs	12V9Ah x 2pcs or REW45-12 x 2pcs	
	Back up Time (at 2-PC load with 15" monitor)	23 minutes	25 minutes	26 minutes
	Recharge Time	8 Hours to 90% after complete discharge		
TRANSFER TIME		4-6ms (Typical)		
INDICATOR	AC Mode	The 1st green LED lighting The 2nd to 5th green LEDs gradually lighting indicating load level		
	Backup Mode	The 1st green LED flashing The 2nd to 5th green gradually lighting indicating battery capacity		
	Fault	Red LED lighting		
AUDIBLE ALARM	Backup Mode	Sounding every 10 seconds		
	Battery Low	Sounding every second		
	Overload	Sounding every 0.5 seconds		
	Fault	Continuous sounding		
PROTECTION	Full Protection	Overcharge and Overload Protection		
PHYSICAL	Dimension (DxWxH) (mm)	368.3X140.2X180.4		
WEIGHT	Net Weight	13.8kgs	14.2kgs	16kgs
ENVIRONMENT	Operating Environment	0- 40°C, 0-90 % Relative Humidity (non-condensing)		
	Noise Level	Less than 45dB		
INTERFACE	Smart RS-232	Windows family, Sun Solaris, IBM Aix, Compaq True64, UnixWare, FreeBSD, HP-UX, Linux and MAC		