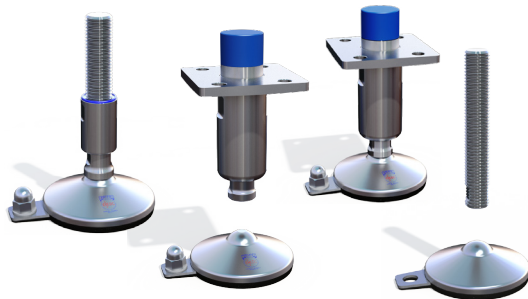


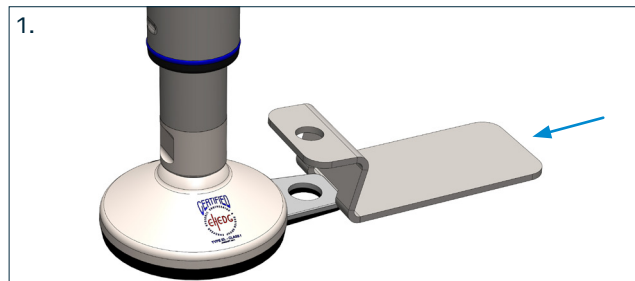
INSTALLATION MANUAL



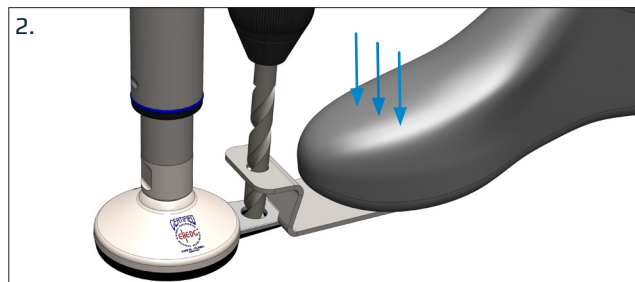
FLOOR FIXING FOR FOOT WITH BASE HOLES

In order for the legs build-in machine feet to be drainable, all surfaces are designed with an angle of minimum 3 degree relative to the bottom of the foot. The special developed NGI drilling template is used to ensure correct drilling angle when mounting the feet to the floor.

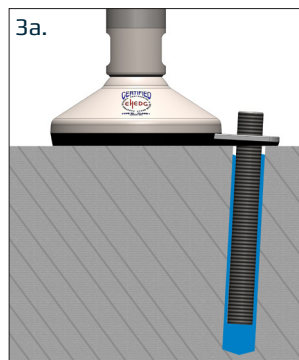
1. Place the tool on the floor and insert it against the floor fixing plate on the machine foot.



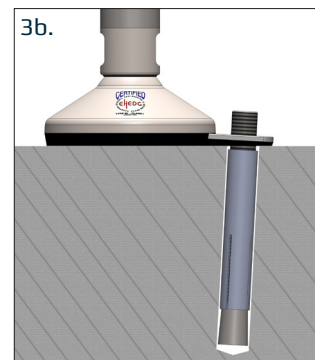
2. Drill the hole Ø12 through the upper guide hole through the fixing plate hole, down into the floor. Secure the tool by stepping on the flat part.



- 3a. When glue anchor is being used ensure to clean hole- inject bonding material before inserting the anchor. Let the glue dry according to product information.



- 3b. When an expanding anchor is used follow the guidance for the particular product.



4. Use prescribed sealing washer and fasten with dome cap nut. Max. torque: 10-12 Nm.

