



# **Installation Manual Wireless Movement Sensor**



## Table of Contents

GETTING STARTED .....	2
UNPACKING.....	2
MOUNTING.....	4
Mounting of the wall/ceiling bracket.....	4
INSTALLATION OF BATTERIES.....	4
AFTER INSTALLATION OF BATTERIES .....	5
TESTING THE MOVEMENT SENSOR .....	5
MOVEMENT TEST .....	6
RESET TO FACTORY SETTINGS.....	6
MAINTENANCE .....	6
TECHNICAL SPECIFICATIONS .....	7
SAFE DISPOSAL .....	7
ACTIVATION IN THE ALARM SYSTEM .....	7

## Getting started

Congratulation with your new SuperSail product. We hope that you will be satisfied with the product and we are always available to give support in case you need it.

You can contact us at: [support@super-sail.dk](mailto:support@super-sail.dk)

Regards,

SuperSail Support Team

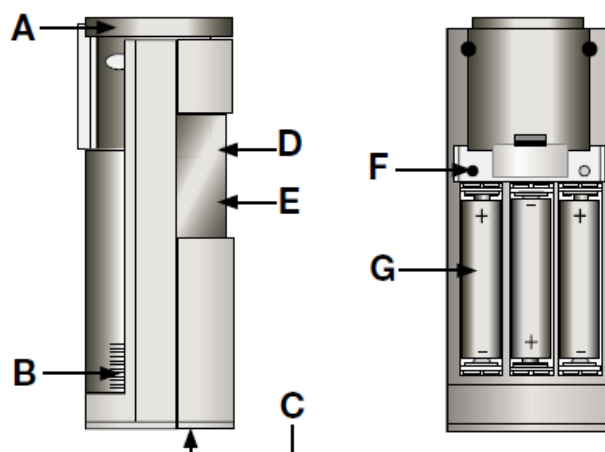
Please read the whole installation manual before starting the installation.

## Unpacking

Before you start using the unit you must ensure that the packaging has not been broken or have been injured during transport and that the product is complete and without any visible sign of damage or strained. If this is not the case please contact SuperSail before using the product.

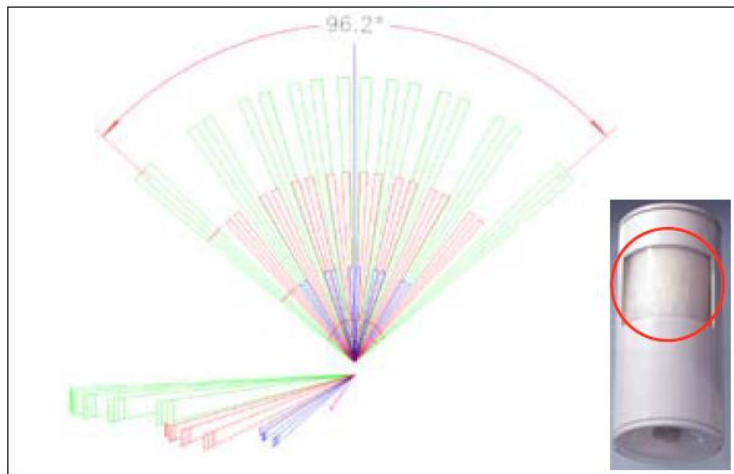
The wireless infrared movement sensor detects movements generated by humans or other warm blooded animals.

- Detection range up to 12 meter, detection angle for the main sensor is 90 deg.
- Creep-zone detection by additional 360 degrees sensor
- Variable light sensitivity
- Short changes in brightness are filtered out
- Can be turned 45 degrees in both directions in the mounting bracket
- Battery life > 1 year



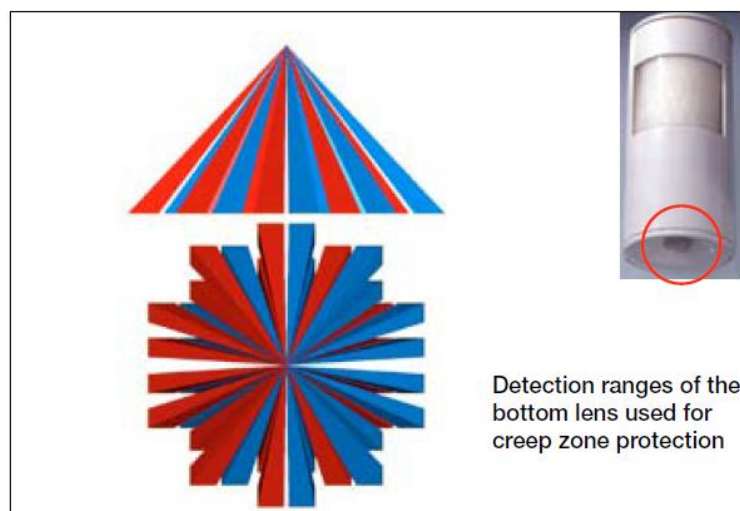
- (A) – Wall/ceiling mounting bracket
- (B) – Cover for battery holder
- (C) – 360-degrees movement sensor (creep-zone protection)
- (D) – Light diode
- (E) – Movement Sensor – main sensor
- (F) – Reset button
- (G) – Battery holder, batteries: 3 x LR6/AA/Mignon

Main sensor is able to detect intrusion in an angle of 90 degrees in a range of up to 12 meter. The below figure show the detection zone for the main sensor:



For further safety the movement sensor is equipped with a creep-zone protection, which ensures that it is not possible to move “under the radar”. Creep-zone protection covers an area of 3.75m x 3.75m if the sensor is installed in a height of 2 meter.

The principle is shown below:



The Movement sensor is mounted in a height of 2 meter or as high as the environment allows for. To minimize the risk of false alarms, the Movement sensor must not be exposed for direct sunlight, car light or installed near a heater.

The main sensor should not be turned directly against a window or a heater, as the detection is achieved by measurement of the temperature difference between a moving object and the surrounding environment.

The Movement sensor is not able to detect movement through window glass.

The Movement sensor should not be mounted on metal or near larger items of metal, as this reduces the distance for the wireless communication.

## Mounting

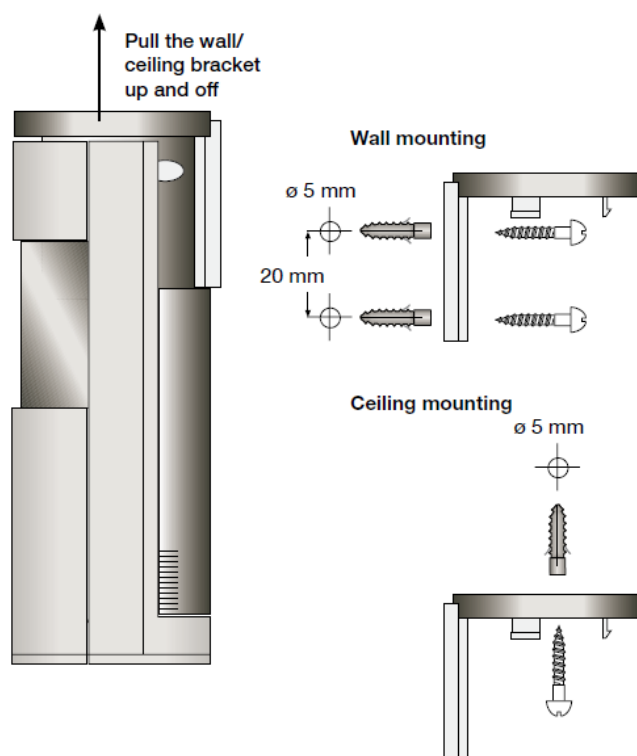
The Movement sensor has a mounting bracket, suitable for wall and ceiling mounting. As the sensor can be rotated 45 degrees in the bracket, it is possible after the installation to adjust the detection angle as wished.

The Movement sensor must be installed in a suitable place according to the detection zones described above.

### Mounting of the wall/ceiling bracket

(see picture below)

1. Draw the wall/ceiling bracket up, to remove it from the Movement sensor
2. Place the bracket on a suitable position on the ceiling or on the wall
3. On soft surface, the bracket can be mounted using the included screws
4. On hard surface use raw-plugs or drill a small hole before screwing



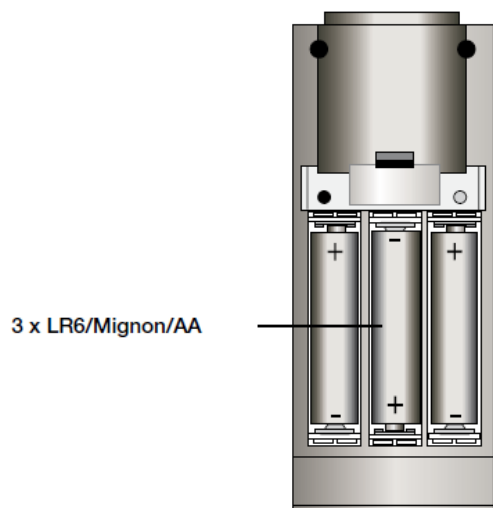
### Installation of batteries

The Movement sensor uses 3 x LR6/Mignon/AA batteries.

We recommend to use Alkaline batteries of good quality, to achieve the longest battery life.

1. Remove the wall/ceiling bracket as described above. Remove the cover into the battery holder (push upward)
2. Insert the batteries into the battery holder – be aware to align them correctly (see the figure below).

When the batteries are installed correct, the Movement sensor will be ready for use after approx. 75 seconds. Movements will not be detected in this period.



Used batteries should not be disposed a domestic waste.

Batteries should be disposed according to the local regulations for batteries

### ***After installation of Batteries***

When the batteries are installed correct, the Movement sensor performs a self-test.

When the self-test has finished, this is indicated by shifting the light in the main sensor from red to green to orange for half a second each.

If an error occur during the self-test this is indicated by the light in the main sensor blinking red.

The light in the main sensor will after the self-test light up orange for 75 seconds, where after the Movement sensor is ready to detect movements.

### ***Testing the Movement Sensor***

When the Movement sensor is installed and activated in the Alarm system, the functionality of the Movement sensor must be tested.

Let the Movement sensor register movement an notice that the light in the Movement sensor is turned on temporarily.

After some seconds (depending on the time for SMS transfer), an Alarm SMS must be received indicating alarm from the Movement sensor.

#### **Fault search:**

- Light is not turned on when registering movement.  
Remove the batteries and re-insert them – verify that they are aligned correctly.  
Self-test as described above under “After Installation of Batteries”, will verify if there are any faults on the Movement sensor.
- Light is turned on, but SMS is not received.  
Verify if the Movement sensor is activated correctly in the Alarm system, as described below under “Activation in the Alarm system”  
Verify that the Movement sensor ID is keyed in correctly.

## ***Movement test***

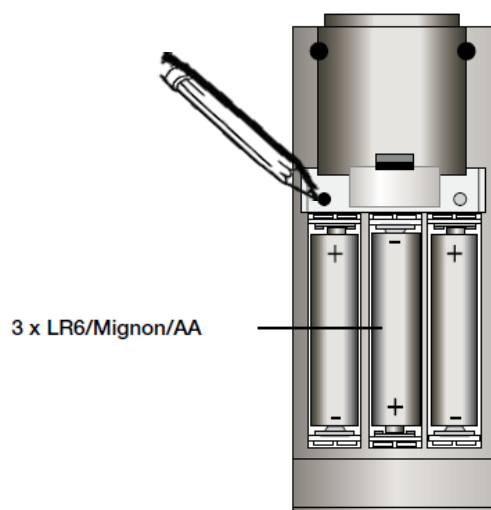
For 10 minutes after the batteries are installed, the light in the Movement sensor will indicate movement by lighting up for 1 second.

- Movement detected via the main sensor: red light
- Movement detected via the creep sensor: green light
- Movement detected via both sensors: orange light

It is thus possible to test all sensors, detection ranges and –angles.

## ***Reset to Factory settings***

If the Movement sensor for some reason does not function and the batteries have been changed without solving the problem, reset to Factory settings can be a solution to fix the problem.



1. Press and hold the button for 5 seconds, until the light in the main sensor starts blinking slowly with red light (use a tip pen) – release the button.
2. Press and hold the button for further 5 seconds, until the light in the main sensor starts blinking faster red (use a tip pen).
3. Release the reset button to finish the reset procedure. The light in the main sensor light up red, green and orange in that order to confirm the reset.

The Movement sensor is reset to Factory settings.

## ***Maintenance***

The Movement sensor is maintenance free. Repairs should be carried out at an authorized service center.

Cleaning can be carried out with a soft cloth wrenched in lukewarm water.

Cleaning detergent containing solvent can harm the unit.

## Technical Specifications

Main sensor:

- Distance/Angel max. 12 m/approx. 90° degrees

Creep-zone sensor:

- Distance/Angel max. 4 m/approx. 43° degrees

Adjustment in the bracket  $\pm 45^\circ$

Radio frequency 868.3 MHz

Typical outdoor range 300 m

Power 3 pcs. LR6/AA/Mignon

Battery life time  $\geq 1$  year

Protection IP20

Size  $\varnothing 55 \times 132$  mm

Changes may apply.

## Safe Disposal



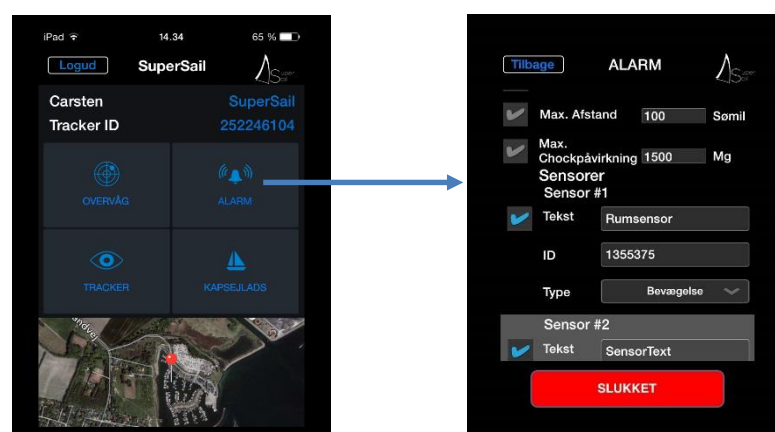
Should not be disposed a domestic waste.

Electronic equipment should be disposed according to the local regulations for electronic and electronically equipment.

## Activation in the Alarm system

After installation and test, the Movement sensor must be activated in the Alarm system.

This is performed via the SuperSail app, where the Movement sensor is activated via the Alarm menu.



In the above example, we have decided to activate the Movement sensor as sensor #1, but all sensors are available for all sensor types.

In the "Text" field you can write a short text, which identifies the installation of the Movement sensor. This text will be transmitted in the Alarm SMS in case the Movement sensor is activated. It is therefore important that the text identifies the individual Movement sensor.



In the "ID" field, you write the ID written on the back of the Movement sensor. The ID is furthermore written on the Quick Guide which follows the Movement sensor. This ID is unique for the Movement sensor and makes it possible for the Alarm system to separate the wireless sensors. Save the ID in case the ID should be deleted from the app and need to be re-installed later.

In the "Type" field you choose "Movement", which specifies that the movement sensor is of the type Movement sensor.

Finally the sensor is activated by ticking the field next to the "Text" field. This activates the sensor in the Alarm system. When the alarm is turned on, this sensor will be included in the alarm.

It is recommended to activate the alarm and test that an alarm SMS is sent, if the Movement sensor is activated.

As long as the Movement sensor registers movement, it will send an alarm every 4 minutes.