

Series 2000 Control Unit



Installation of the control unit and wiper must be done by a competent electrician.

Series 2000 controllers are available in units from 1 – 6 ways. They allow direct connection of the wiper motor without the need for intermediate power supplies. Wipers can be individually controlled or Group controlled by the Master Control Switch. Wipers are synchronised when in Intermittent mode.

AC supply voltages at the controller input with wiper running should be within +/- 10%. The internal DC supply for electronic components is generated by a 24V power supply.

The system complies with all relevant safety and EMC regulations.

Installation of Controller



Remove power prior to working on controller.

1. Cut out and de-bur a hole in the console, relevant to the sizes shown in the table below.

Number of ways	Panel Cut Out (mm)	Overall size (mm)	Fixing Holes Location (mm)
1-Way	86 x 107	95 x 135	81 x 121
2-Way	167 x 107	175 x 135	161 x 121
3-Way	167 x 107	175 x 135	161 x 121
4-Way	167 x 222	175 x 270	159 x 254
5-Way	167 x 222	175 x 270	159 x 254
6-Way	167 x 222	175 x 270	159 x 254

2. Remove the connector(s) from the rear of the unit.
3. Fit the unit into the mounting hole and secure with 4 off M4 screws or similar.
4. Connect wiring to the removed connectors according to the appropriate wiring diagram.
5. Reconnect the connectors to the rear of the controller, taking care to fit into the correct channel.

Operating Instructions

To operate the wiper, turn the wiper operation switch clockwise one position to select Intermittent wipe, turn a further position for low speed or fully clockwise for high speed operation if it is a 3 phase 2 speed version.

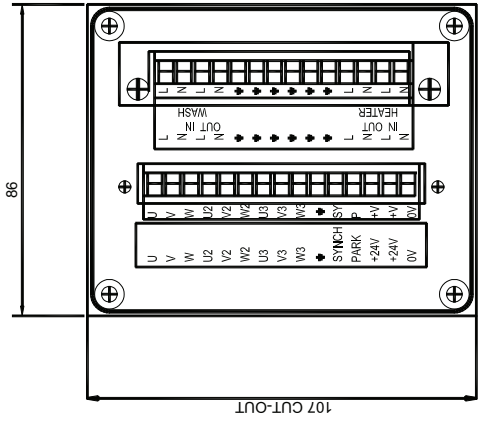
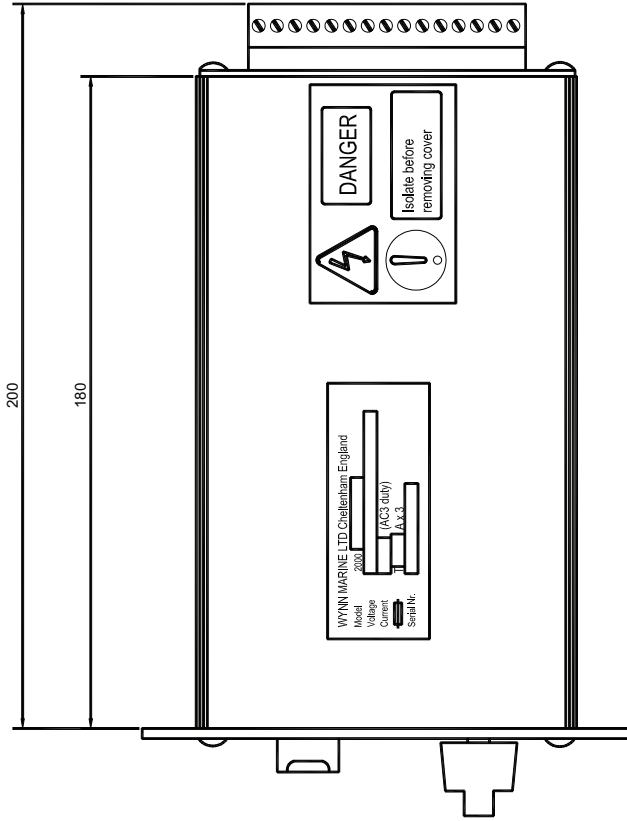
To park the wipers, turn the switch fully anticlockwise. The wipers will complete their current wipe and then park.

The intermittent switch has 15 positions, each turn clockwise decreases the delay between wipes, from 32 seconds down to 4 seconds.

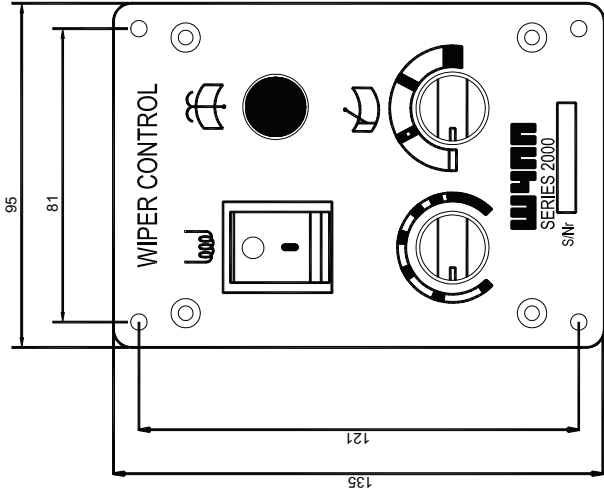
Functional Test

1. Set the wiper switch to the off position (fully anti-clockwise). Set the Intermittent switch to the shortest time increment (fully clockwise). Apply power to the system. Check each wiper switch in turn as follows:
2. Switch to Intermittent mode, the first clockwise position. The wiper will immediately make one wipe returning to the park position. After 4 seconds the wiper will make one wipe and park.
3. Switch control to continuous speed (second clockwise position). The wiper will operate continuously. Slow speed in 3-phase application. Fast speed in 1-phase applications.
4. Switch into fully clockwise position. Fast speed in 3-phase 2 speed AC systems only.
5. Heaters. Switch on and ensure that the wipers begin to heat up.
6. Wash / Wipe. Switch on and hold down and ensure water is sprayed through the system.

Series 2000 Controller Single Way Dimensions



Date: 11.09.01 Issue1
 Path: 2000Manuals\300-100poly



4 HOLES 4.5 DIA

CONTROLLER OPTION	Wiper Control	Blanking Plug
2000-300-100	✓	✗
2000-300-101	✗	✓
2000-300-102	✓	✓
2000-300-103	✗	✗

CONTROLLER NOT FITTED WITH INTERNAL POWER SUPPLY UNIT

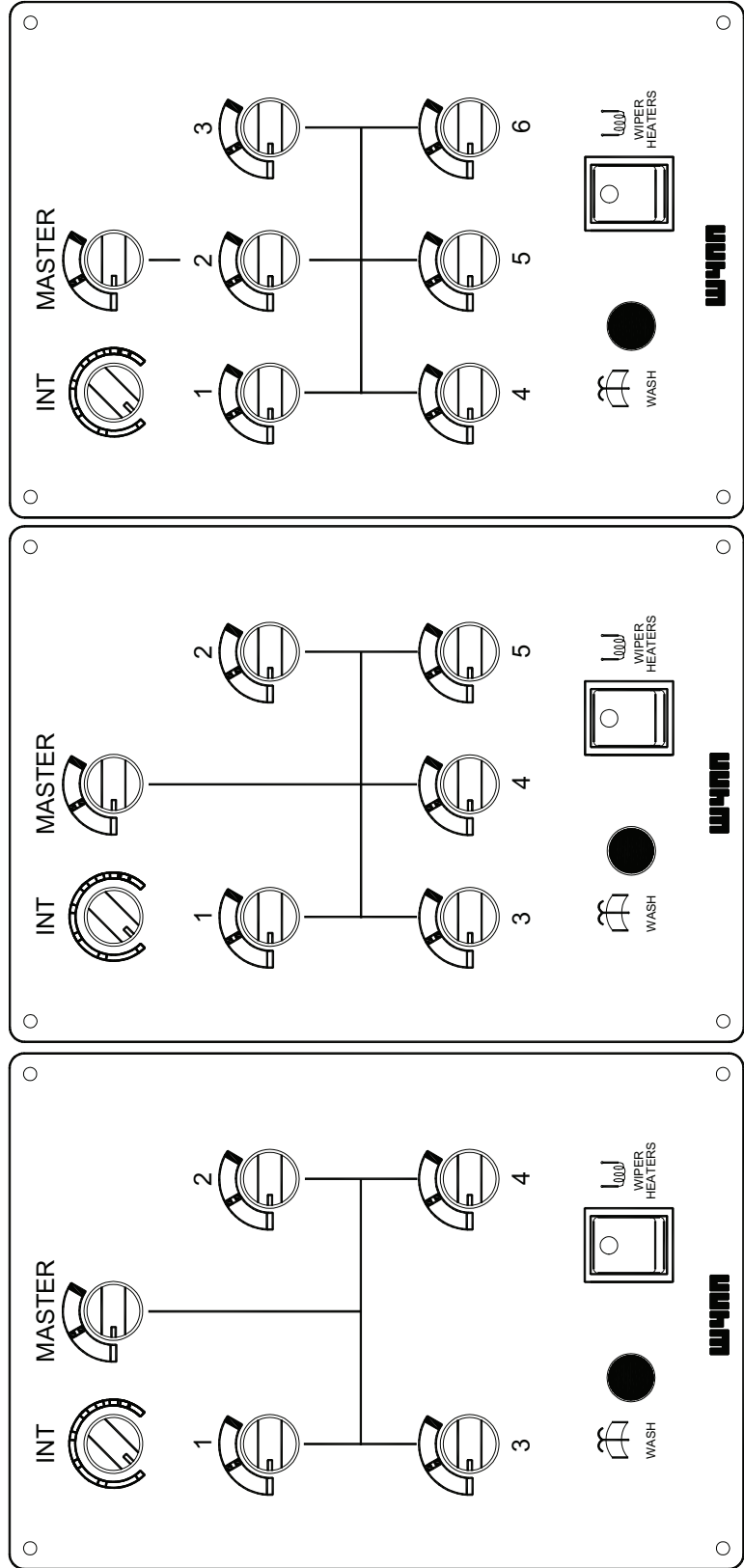
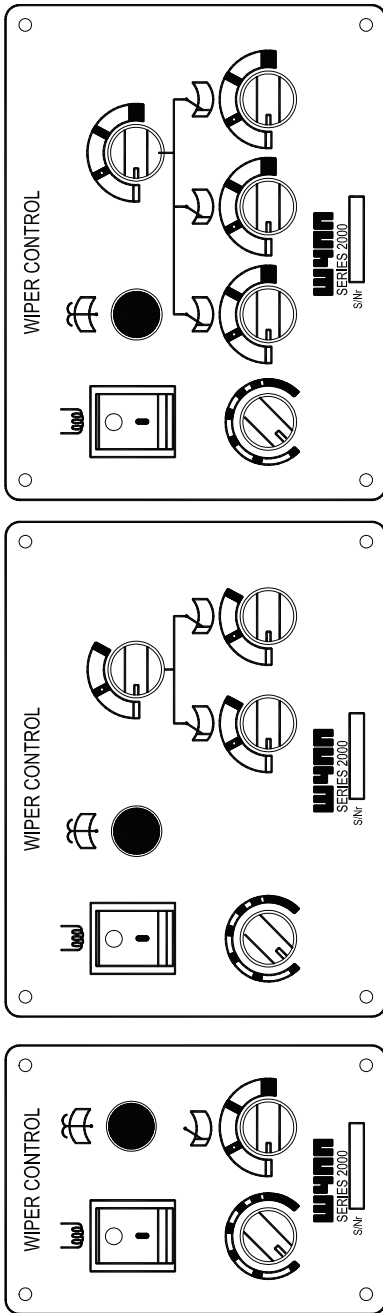
CONTROLLER OPTION	Wiper Control	Blanking Plug
2000-301-100	✓	✗
2000-301-101	✗	✓
2000-301-102	✓	✓
2000-301-103	✗	✗

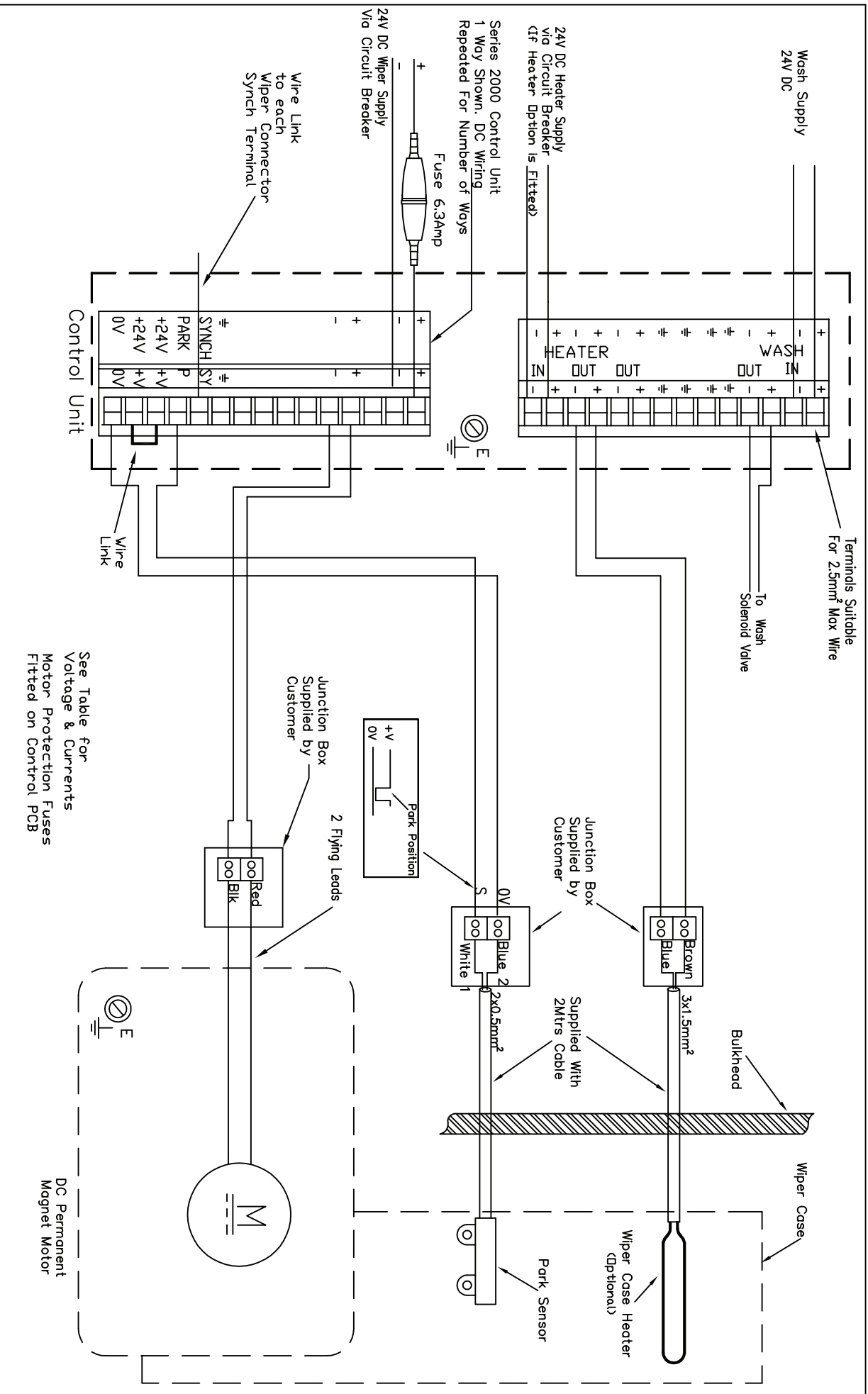
CONTROLLER FITTED WITH 24V DC INTERNAL POWER SUPPLY UNIT

VIEW ON REAR OF UNIT

Series 2000 Control Panel Variants

12000 Manuals Front panels





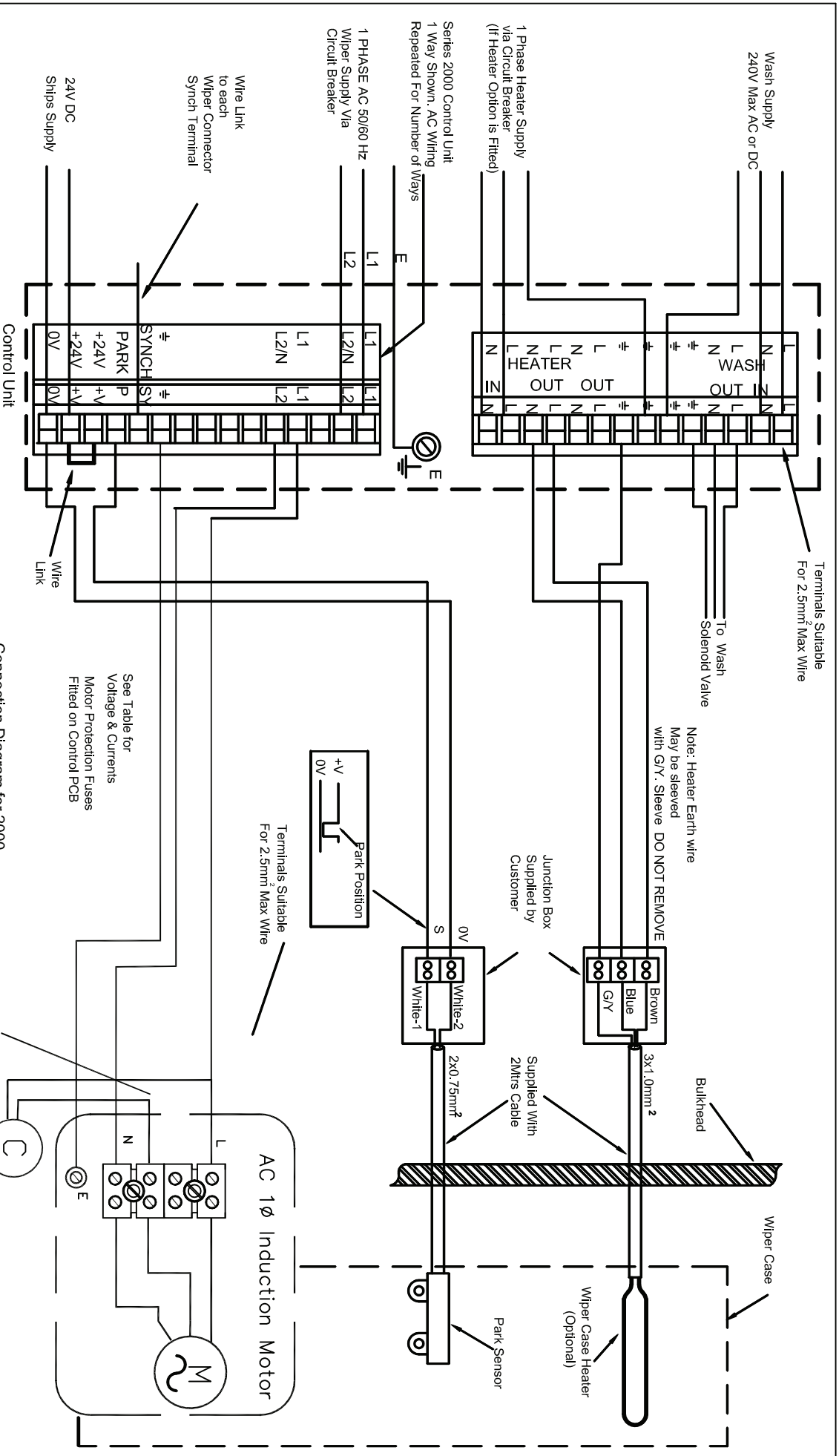
See Table for Voltage & Currents Motor Protection Fuses Fitted on Control PCB

3rd ANGLE PRD.



TOLERANCES UNLESS OTHERWISE STATED
 DECIMAL DIMS. TO 2 PLACES ± 0.1mm.
 DECIMAL DIMS. TO 1 PLACE ± 0.25mm
 NO DECIMAL PLACES ± 0.5mm
 ANGLES ± 1°

MAT'L:-	ISS. DIN	DATE	ISS. DIN	DATE	ISS. DIN	DATE	MDD STATUS		THE COPYRIGHT OF THIS DRAWING IS VESTED IN WYNN MARINE LTD. AND MUST NOT BE REPRODUCED WITHOUT WRITTEN PERMISSION OF THE COMPANY OR USED FOR ANY PURPOSE OTHER THAN THAT FOR WHICH IT HAS BEEN SUPPLIED. WYNN MARINE LIMITED CHELTENHAM ENGLAND
2000\EL\DC-C-3	SCALE:-NTS	DRAWN:-DCT	CHKD:-	CHANGED:-	1	1327	27.4.98	1	
					2	1392	30.11.98	2	
					3	1451	14.4.99	3	
					4		30.06.08	4	
					5		02.03.09	5	
TITLE:-Connection Diagram for 2000 Series Controller to C Type Wiper with a DC Motor DRAWING No. 2000-EL-DC-C									



Connection Diagram for 2000 Series Controller without PSU to C Type Wiper with a 1 Phase AC Motor

Motor Terminal Box Cable Gland M20
 AC Induction Motor Thermal Cutout Fitted (self-resetting)
 2000-EL-1AC-C

3rd ANGLE PRO.



TOLERANCES UNLESS OTHERWISE STATED
 DECIMAL DIMS. TO 2 PLACES ± 0.1mm,
 DECIMAL DIMS. TO 1 PLACE ± 0.25mm
 NO DECIMAL PLACES ± 0.5mm
 ANGLES ± 1°

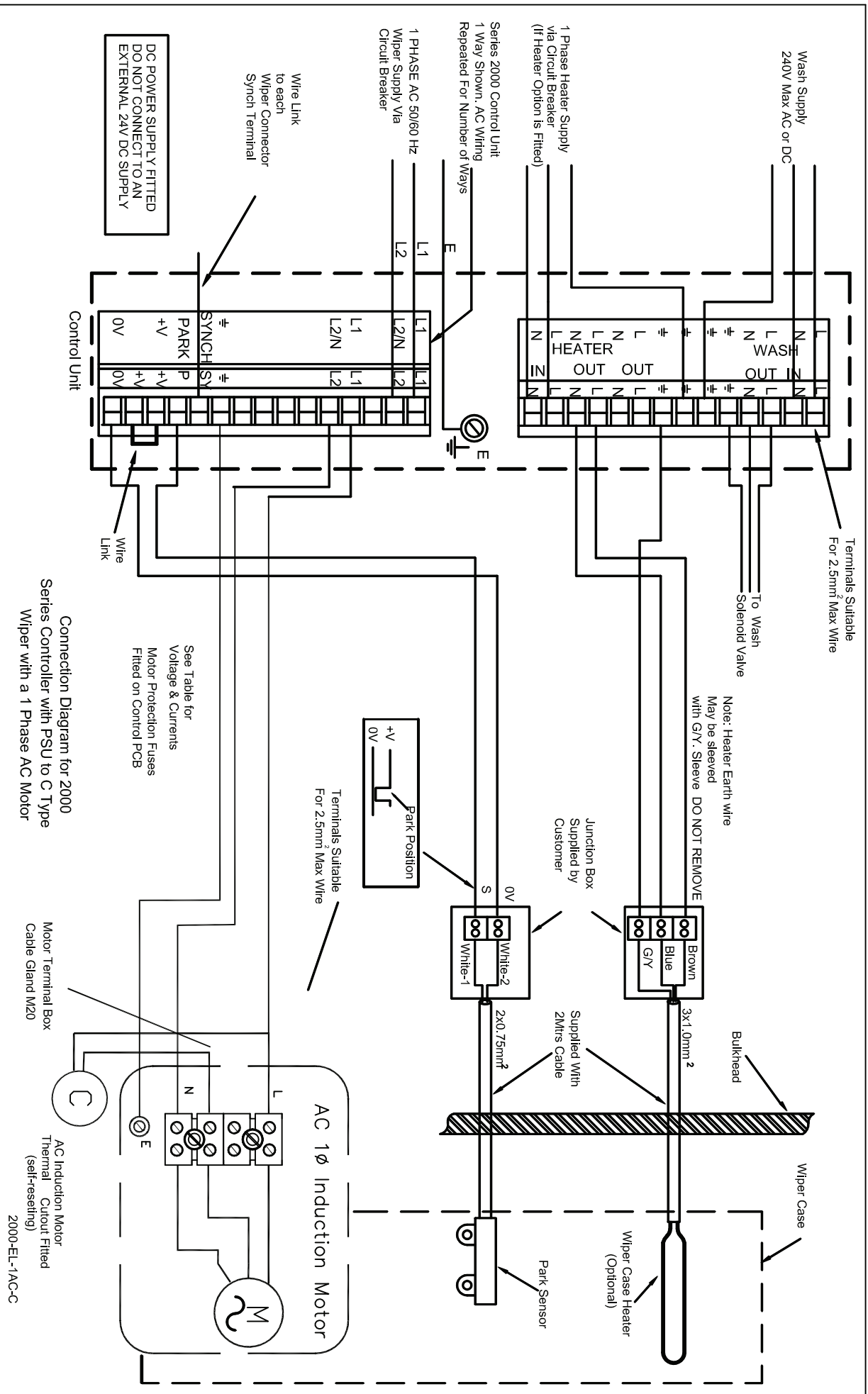
MAT'L:-	ISS. DIN	DATE	ISS. DIN	DATE	ISS. DIN	DATE
			5	30.06.08		
			4	2286 21.10.02		
			3	-	May.29.01	
			2	1451 9.4.99		
			1	1293 27.4.98		

MDD STATUS

THE COPYRIGHT OF THIS DRAWING IS VESTED IN WYNN MARINE LTD. AND MUST NOT BE REPRODUCED WITHOUT WRITTEN PERMISSION OF THE COMPANY OR USED FOR ANY PURPOSE OTHER THAN THAT FOR WHICH IT HAS BEEN SUPPLIED.

WYNN MARINE LIMITED
 CHELTENHAM ENGLAND

TITLE:- Connection Diagram for 2000 Series Controller without PSU to C Type Wiper with a 1 Phase AC Motor



3rd ANGLE PRD.

TOLERANCES UNLESS OTHERWISE STATED
 DECIMAL DIMS. TO 2 PLACES ± 0.1mm,
 DECIMAL DIMS. TO 1 PLACE ± 0.25mm
 NO DECIMAL PLACES ± 0.5mm
 ANGLES ± 1°

ISS.	DIN	DATE	ISS.	DIN	DATE
5		30.06.08	1	1293	27.4.98
4	2286	21.10.02	2	1451	9.4.99
3	-	May.29.01			

MOD STATUS

Motor Terminal Box Cable Gland M20

AC Induction Motor Thermal Cutout Fitted (self-resetting)

2000-EL-1AC-C

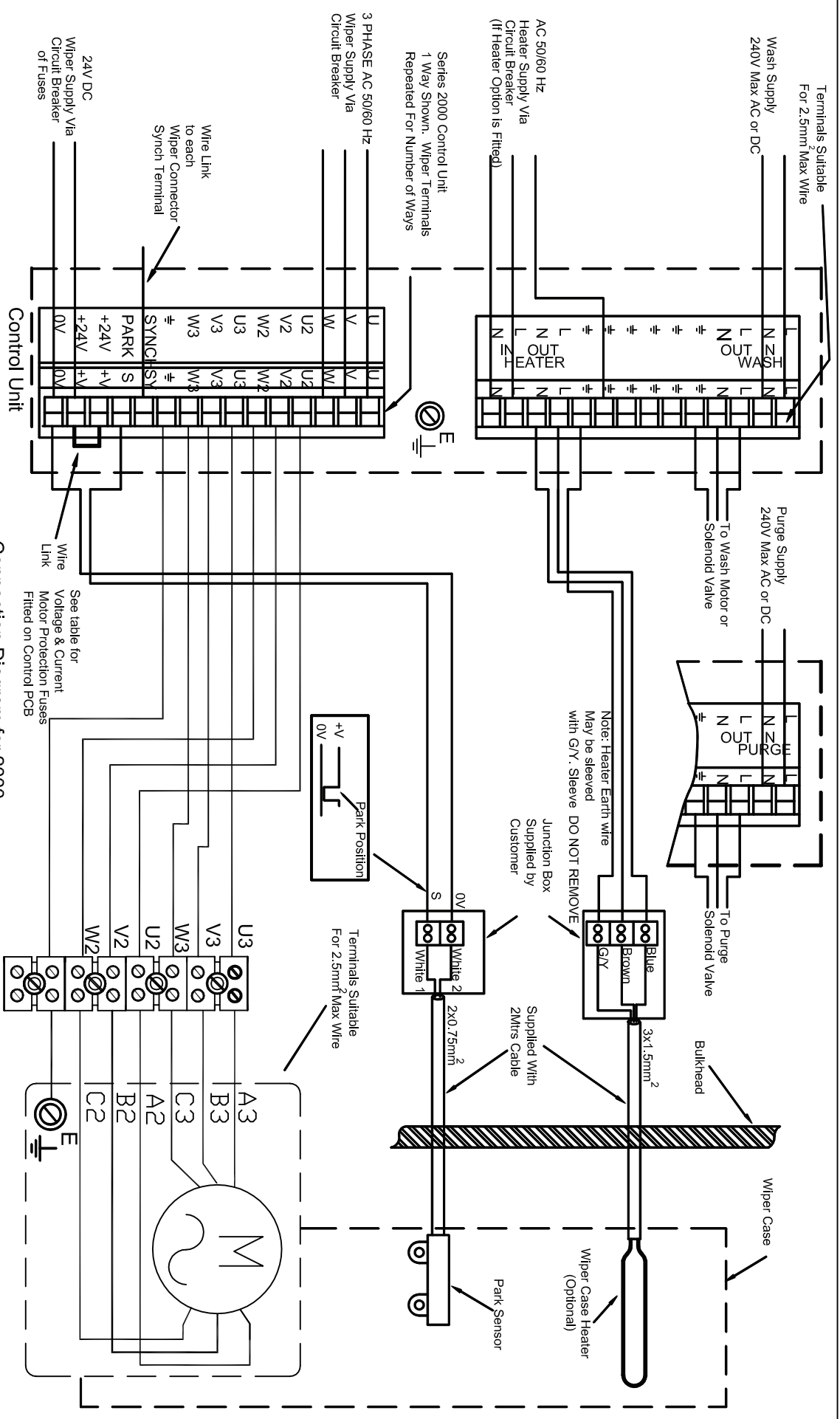
THE COPYRIGHT OF THIS DRAWING IS VESTED IN WYNN MARINE LTD. AND MUST NOT BE REPRODUCED WITHOUT WRITTEN PERMISSION OF THE COMPANY OR USED FOR ANY PURPOSE OTHER THAN THAT FOR WHICH IT HAS BEEN SUPPLIED.

WYNN MARINE LIMITED
 CHELTENHAM ENGLAND

TITLE--Connection Diagram for 2000 Series Controller with PSU to C Type Wiper with a 1 Phase AC Motor

DRAWING No. 2000-EL-1ACP-C

2000-EL-1ACP-C-13	SCALE--NTS	DRAWN--DCT	CHKD--	CHANGED--



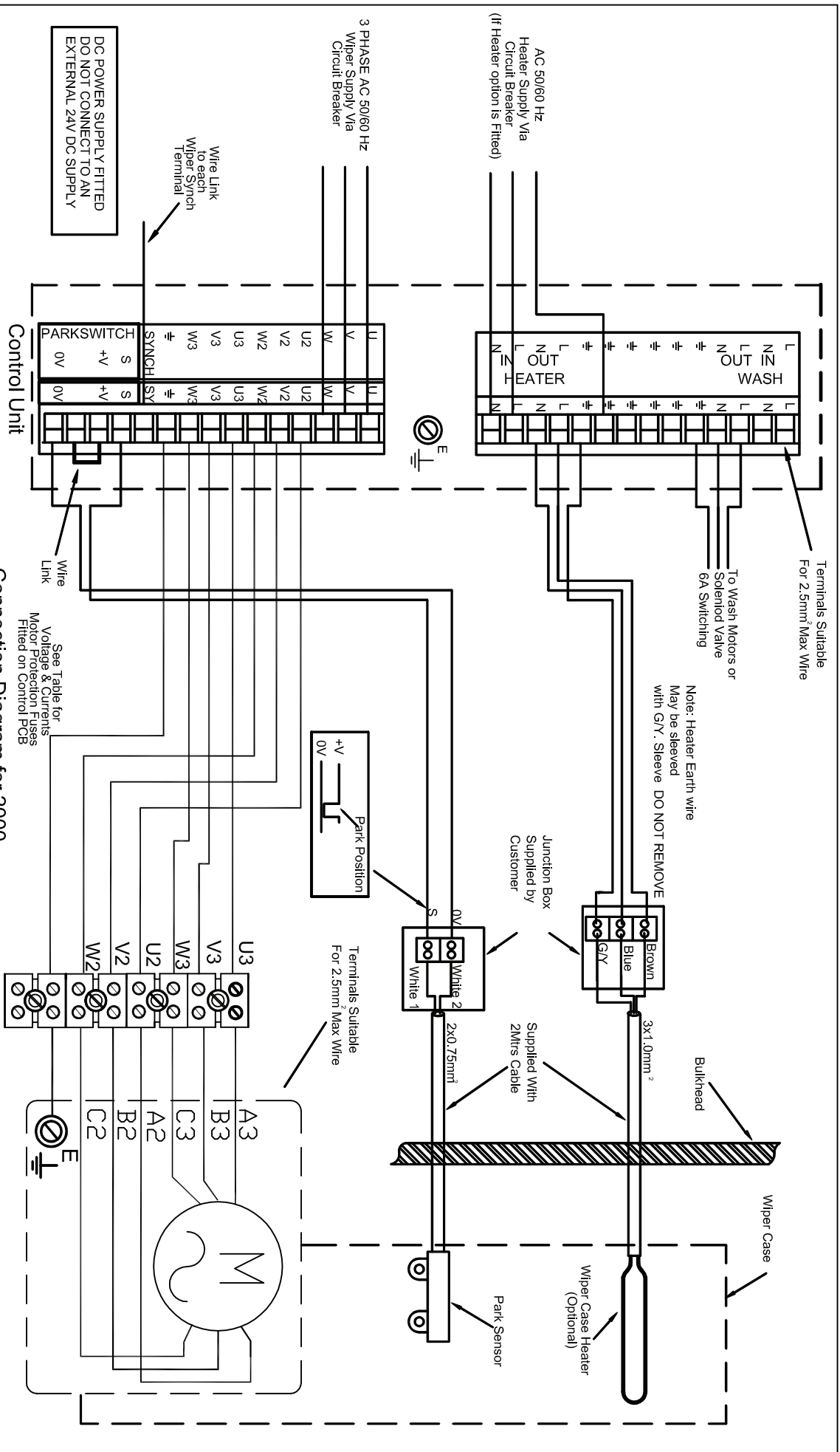
Connection Diagram for 2000 Series Controller without PSU to 'C' Type Wiper with a 3 Phase AC Motor

AC 3 Phase Induction Motor
2000-EL-3AC-C

3rd ANGLE PRD.

TOLERANCES UNLESS OTHERWISE STATED
DECIMAL DIMS. TO 2 PLACES ± 0.1mm,
DECIMAL DIMS. TO 1 PLACE ± 0.25mm
NO DECIMAL PLACES ± 0.5mm
ANGLES ± 1°

MAT'L:-	ISS. DIN	DATE	ISS. DIN	DATE	ISS. DIN	DATE	MOD STATUS	THE COPYRIGHT OF THIS DRAWING IS VESTED IN WYNN MARINE LTD. AND MUST NOT BE REPRODUCED WITHOUT WRITTEN PERMISSION OF THE COMPANY OR USED FOR ANY PURPOSE OTHER THAN THAT FOR WHICH IT HAS BEEN SUPPLIED. WYNN MARINE LIMITED CHELTENHAM ENGLAND
SCALE:-NTS	DIN	DATE	DIN	DATE	DIN	DATE		
DRAWN:-DCT	DIN	DATE	DIN	DATE	DIN	DATE		
CHKD:-	DIN	DATE	DIN	DATE	DIN	DATE		
CHANGED:-								TITLE:-Connection Diagram for 2000 Series Controller without PSU to 'C' Type Wiper with a 3 Phase AC Motor DRAWING No. 2000-EL-3AC-C



Connection Diagram for 2000 Series Controller with PSU to 'C' Type Wiper with a 3 Phase AC Motor

3rd ANGLE PRD.		SCALE:--NTS		DRAWN:--DCT		CHKD:--		CHANGED:--		MOD STATUS		THE COPYRIGHT OF THIS DRAWING IS VESTED IN WYNN MARINE LTD. AND MUST NOT BE REPRODUCED WITHOUT WRITTEN PERMISSION OF THE COMPANY OR USED FOR ANY PURPOSE OTHER THAN THAT FOR WHICH IT HAS BEEN SUPPLIED.		
TOLERANCES UNLESS OTHERWISE STATED DECIMAL DIMS. TO 2 PLACES ± 0.1mm. DECIMAL DIMS. TO 1 PLACE ± 0.25mm NO DECIMAL PLACES ± 0.5mm ANGLES ± 1°		ISS.	DIN	DATE	ISS.	DIN	DATE	ISS.	DIN	DATE	1	1293	15.12.97	WYNN MARINE LIMITED CHELTENHAM ENGLAND
MAT'L:--										2	1451	14.4.99	TITLE:--Connection Diagram for 2000 Series Controller with PSU to 'C' Type Wiper with a 3 Phase AC Motor DRAWING No. 2000-EL-3ACP-C	
										3		May.25.01		
										4	2286	21.10.02		
										5		02.07.08		

2000-EL-3ACP-C