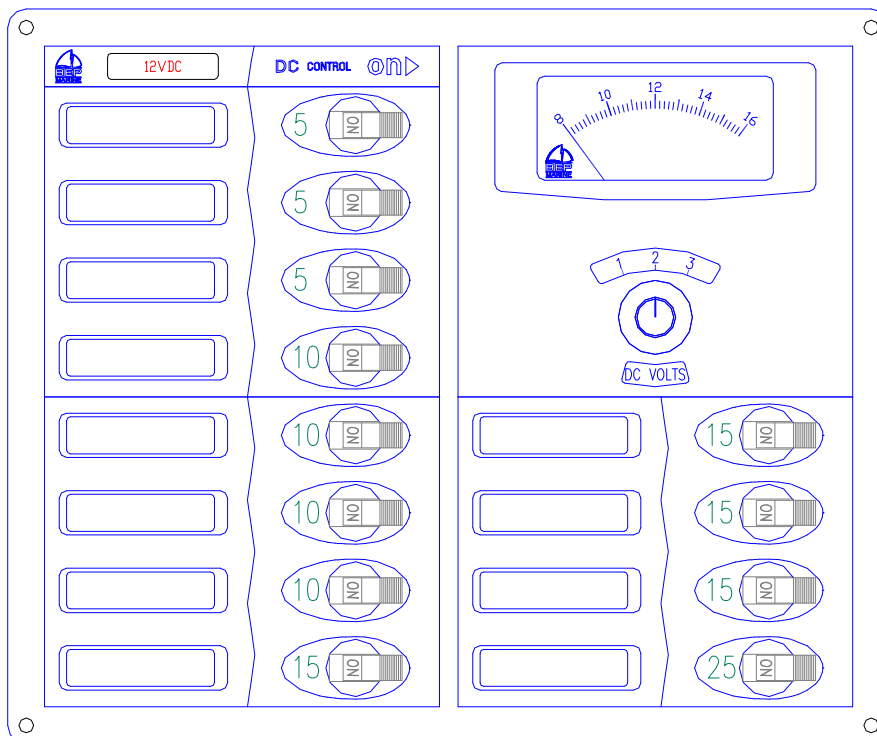




## DC CIRCUIT BREAKER PANELS

[WITH ANALOGUE METERS]

### INSTALLATION & OPERATING INSTRUCTIONS



*This page has been deliberately left blank.*

## Table of Contents

|           |   |           |
|-----------|---|-----------|
| <b>1</b>  | <b>CIRCUIT BREAKERS .....</b>                         | <b>5</b>  |
| <b>2</b>  | <b>LABELLING AND REPLACING CIRCUIT BREAKERS .....</b> | <b>6</b>  |
| <b>3</b>  | <b>INSTALLATION (PANEL MOUNTING) .....</b>            | <b>7</b>  |
| <b>4</b>  | <b>DC BUS BARS.....</b>                               | <b>9</b>  |
| <b>5</b>  | <b>BACK LIGHTING.....</b>                             | <b>11</b> |
| <b>6</b>  | <b>DROPPING RESISTORS .....</b>                       | <b>11</b> |
| <b>7</b>  | <b>VOLTMETER WIRING DIAGRAM.....</b>                  | <b>12</b> |
| <b>8</b>  | <b>AMMETER WIRING DIAGRAM.....</b>                    | <b>13</b> |
| <b>9</b>  | <b>PANEL WIRING DIAGRAM .....</b>                     | <b>14</b> |
| <b>10</b> | <b>LABEL SETS .....</b>                               | <b>15</b> |

THANK YOU FOR PURCHASING A BEP MARINE AC CONTROL PANEL

BEP Marine uses the highest quality materials in its range of Control Panels, from the marine grade aluminium base plates to the Airpax magnetic hydraulic circuit breakers.

*This page has been deliberately left blank.*

# 1 CIRCUIT BREAKERS

It is very important to note that the primary function of the circuit breaker is to prevent the cabling from overloading and therefore catching fire. In the event of an electrical short, fault or overload, the circuit breaker is designed to protect the boat's electrical system not necessarily the appliance.

Different appliances require different circuit breakers with the manufacturer of the appliance certifying the load, and therefore the size of the circuit breaker required.

All BEP panels are supplied complete with a standard set of circuit breaker sizes and labels. Owners or electrical installers therefore need to choose the most appropriate panel for each application.

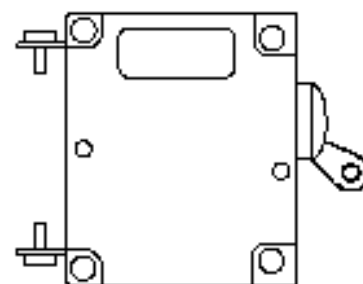
Should you require a custom made current rating or label layout these are available for an additional charge. Contact your BEP Marine representative for more details.

Note: breakers must be sized in accordance with cable size.

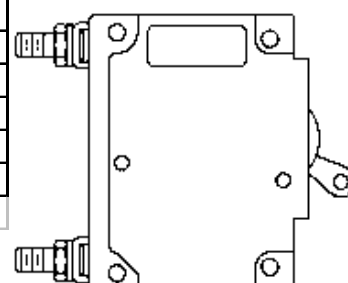
BEP Marine uses Airpax IEG Magnetic circuit breakers.

| SINGLE TOGGLE 1-2 & 3 POLE SMALL FRAME CB'S |                     |                         |
|---|---------------------|-------------------------|
| Single pole                                 | Double pole         | Triple pole             |
| CBS-2.5A-SP 2.5Amps                         | CBS-2.5A-DP 2.5Amps | CBS-30A-TP 30Amps       |
| CBS-5A-SP 5Amps                             | CBS-5A-DP 5Amps     | CBS-50A-TP 50Amps       |
| CBS-10A-SP 10Amps                           | CBS-10A-DP 10Amps   | D/pole Trip Coil        |
| CBS-15A-SP 15Amps                           | CBS-15A-DP 15Amps   | CBS-15A-DP-TC230 230VAC |
| CBS-20A-SP 20Amps                           | CBS-20A-DP 20Amps   | CBS-20A-DP-TC230 230VAC |
| CBS-25A-SP 25Amps                           | CBS-25A-DP 25Amps   | CBS-20A-DP-TC110 110VAC |
| CBS-30A-SP 30Amps                           | CBS-30A-DP 30Amps   | CBS-30A-DP-TC230 230VAC |
| CBS-40A-SP 40Amps                           | CBS-40A-DP 40Amps   | CBS-30A-DP-TC110 110VAC |
| CBS-50A-SP-IG 50Amps                        | CBS-50A-DP 50Amps   | CBS-50A-DP-TC230 230VAC |
|   |                     | CBS-50A-DP-TC110 110VAC |
| SINGLE TOGGLE 1-2 & 3 POLE LARGE FRAME CB'S |                     |                         |
| Single pole                                 | Double pole         | Triple pole             |
| CBL-50A-SP 50Amps                           | CBL-50A-DP 50Amps   | CBL-50A-TP 50Amps       |
| CBL-60A-SP 60Amps                           | CBL-60A-DP 60Amps   | CBL-80A-TP 80Amps       |
| CBL-75A-SP 75Amps                           | CBL-80A-DP 80Amps   | CBL-100A-TP 100Amps     |
| CBL-100A-SP100Amps                          | CBL-100A-DP100Amps  |                         |

Small Frame



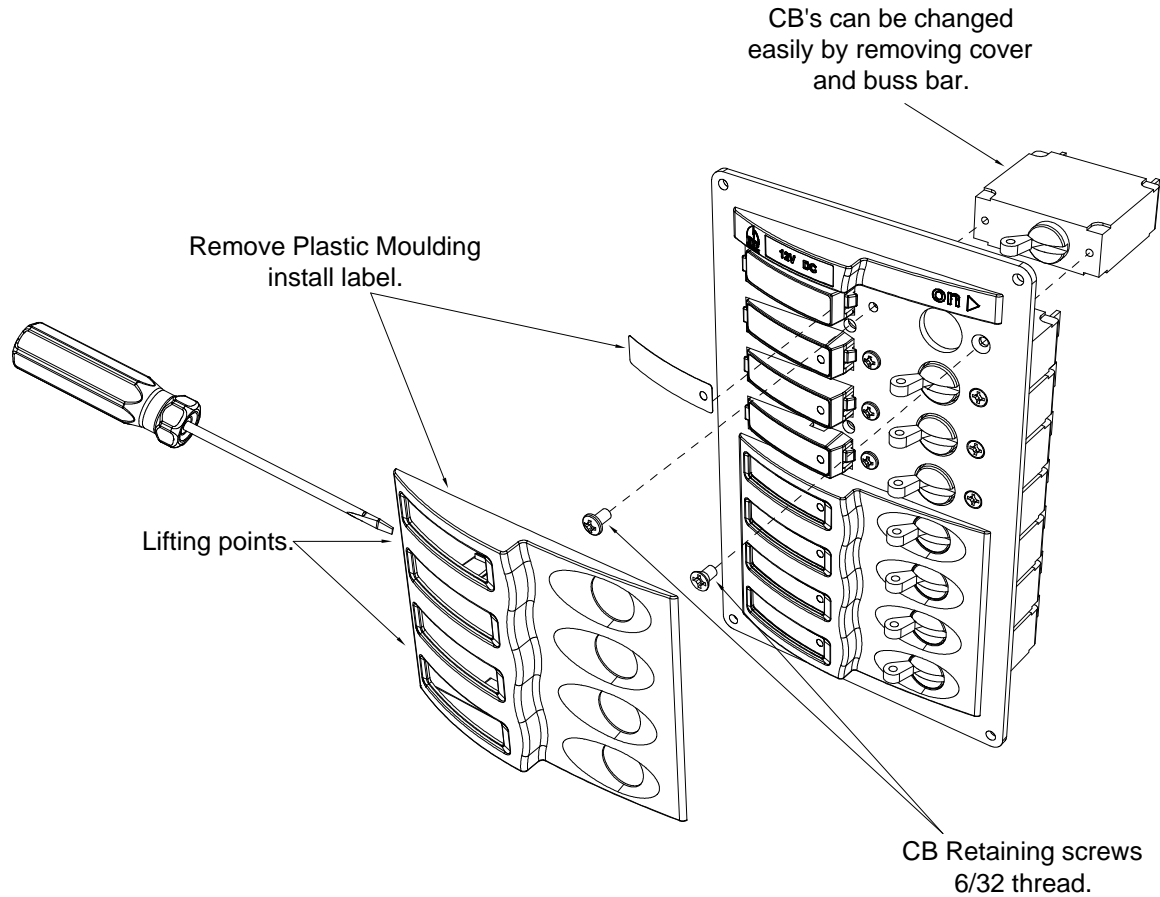
Large Frame



## 2 LABELLING AND REPLACING CIRCUIT BREAKERS

All BEP panels come with a comprehensive set of self-adhesive labels.

To refit or replace a label, unclip the front panel as shown and replace the appropriate label.

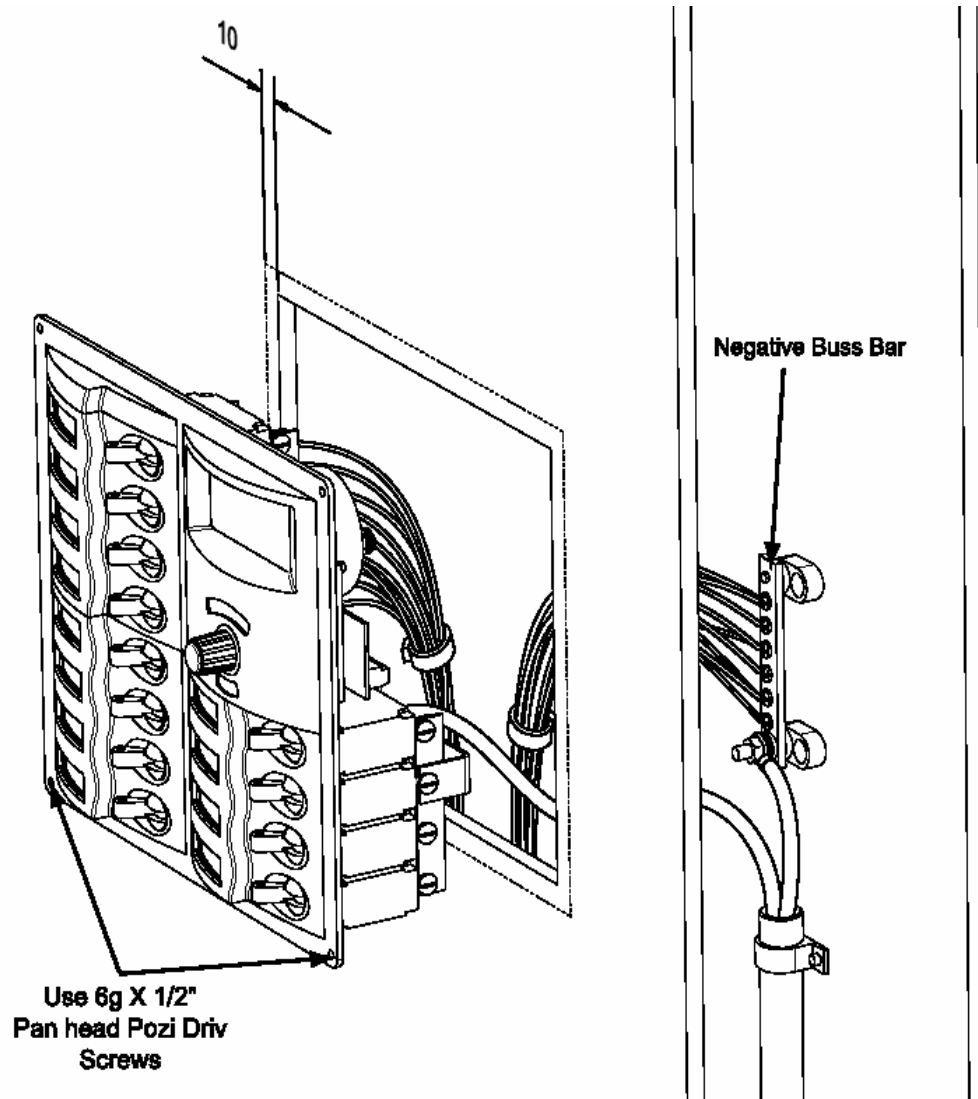


To replace a circuit breaker the front cover of the BEP panel must be removed. This is done by unclipping the front panel and unscrewing the two screws that hold the circuit breaker.

### 3 INSTALLATION (PANEL MOUNTING)

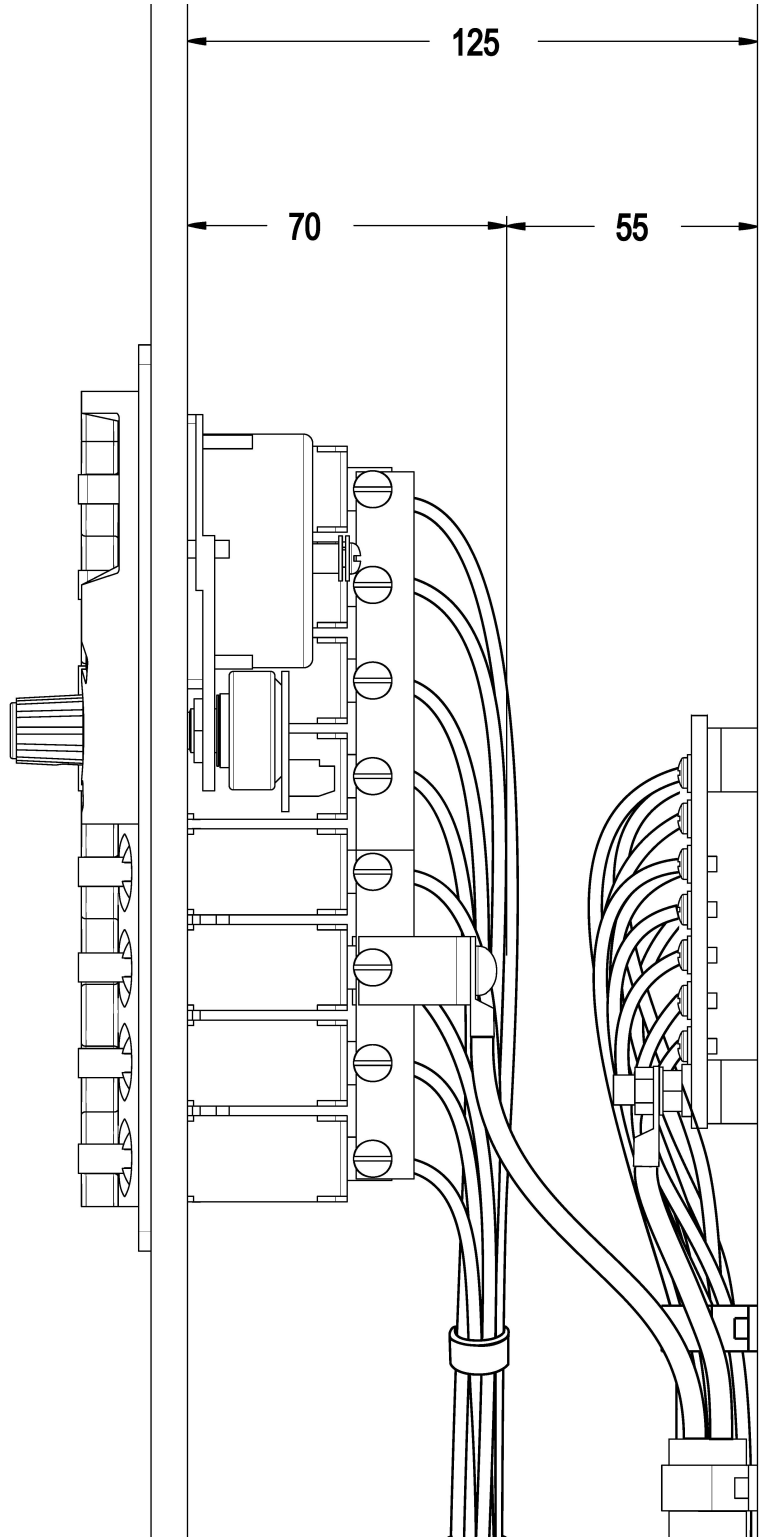
All BEP panels require a 10mm inset on all external edges.

Panels are also supplied with negative bus bars to allow the tidy connection of negative cables at the back of the panel.



Be sure to allow plenty of space behind the panel for wiring connections and looms. A minimum of 55mm of extra space is strongly recommended.

For example: If the distance to the back of the panel brackets is 70mm be sure to allow at least 125mm ( $70 + 55 = 125$ ).

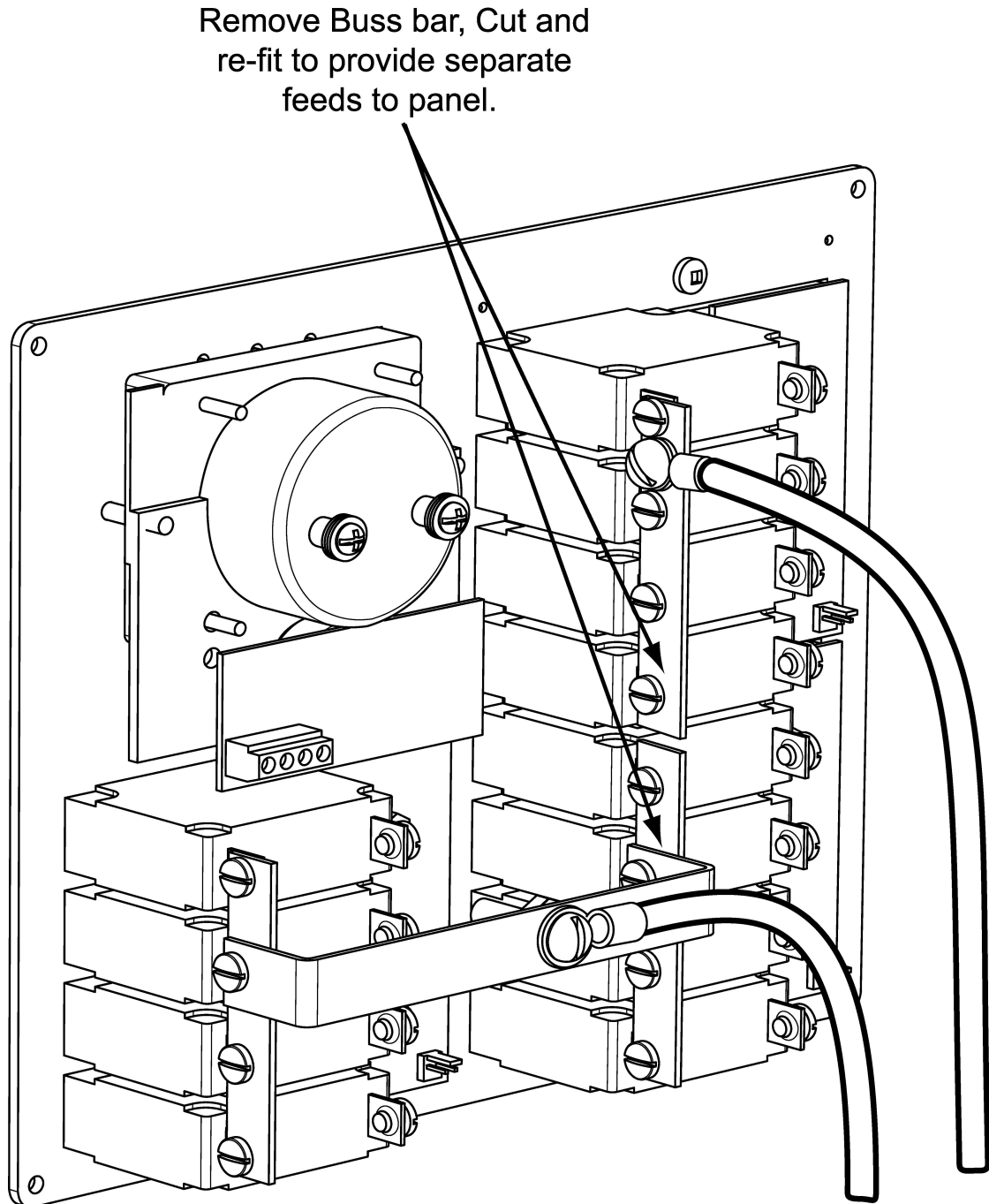




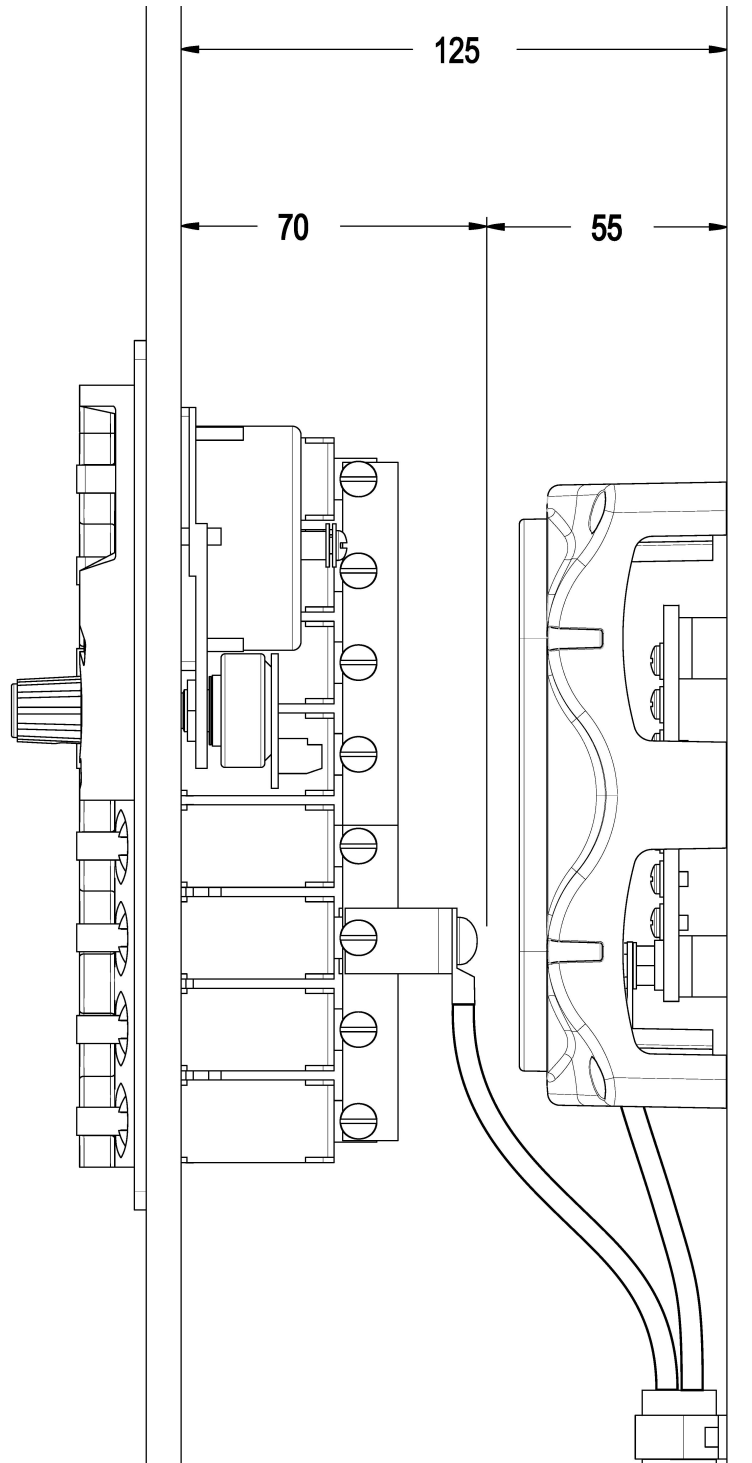
## 4 DC BUS BARS

At various times it may be necessary to bring either a 24-volt supply or a mixture of 12-volt, 24-volt and 24-hour supplies to parts of the panel back.

To accommodate this, BEP uses a copper bus connection bar along the inputs of the circuit breakers. The different voltages can therefore be simply separated by cutting the bar to separate the different supplies on the panel back.



Please note: If negative bus bars are not safely enclosed, it is advisable to use a BBC-1 or BBC-2 cover to ensure that any stray objects cannot fall onto the electrical system. (This is also advised by ABYC).



#### NEGATIVE BUS BARS AVAILABLE FROM BEP

|                    |          |
|--------------------|----------|
| Part No: BB-6W     | (6 way)  |
| Part No: BB-12W    | (12 way) |
| Part No: BB-24W-2S | (24 way) |

## 5 BACK LIGHTING

All BEP AC and DC panels come with 12 volt DC back lighting. On 24-volt systems, a dropping resistor will be required for the back lighting

Note: The Red Systems On indicators will work on both 12 and 24 volts so therefore do not require a dropping resistor.

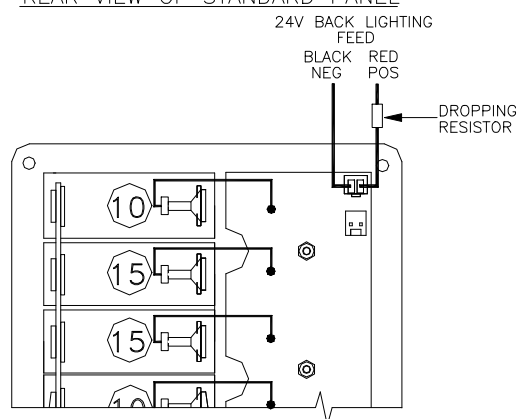
## 6 DROPPING RESISTORS

Dropping resistors are used for changing back lighting on 12V panels to 24V

Note: Use ½ watt resistors, select as close to the above sizes as possible.

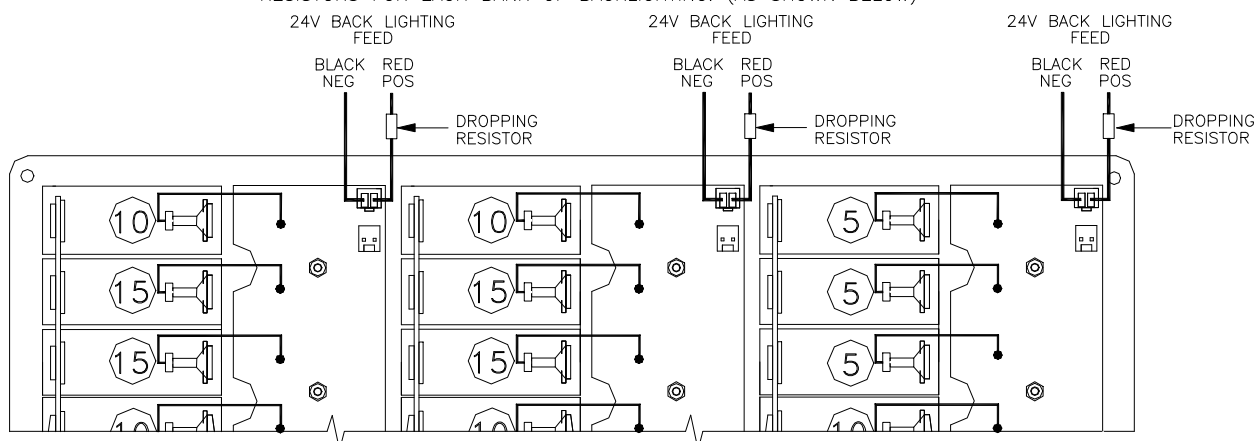
| Panel size | Resistor size |
|------------|---------------|
| 4 way      | 1K8Ω          |
| 8 way      | 1KΩ           |
| 12 way     | 680Ω          |
| 16 way     | 470Ω          |
| 20 way     | 390Ω          |
| 24 way     | 330Ω          |
| 28 way     | 270Ω          |
| 32 way     | 220Ω          |
| 36 way     | 200Ω          |

REAR VIEW OF STANDARD PANEL



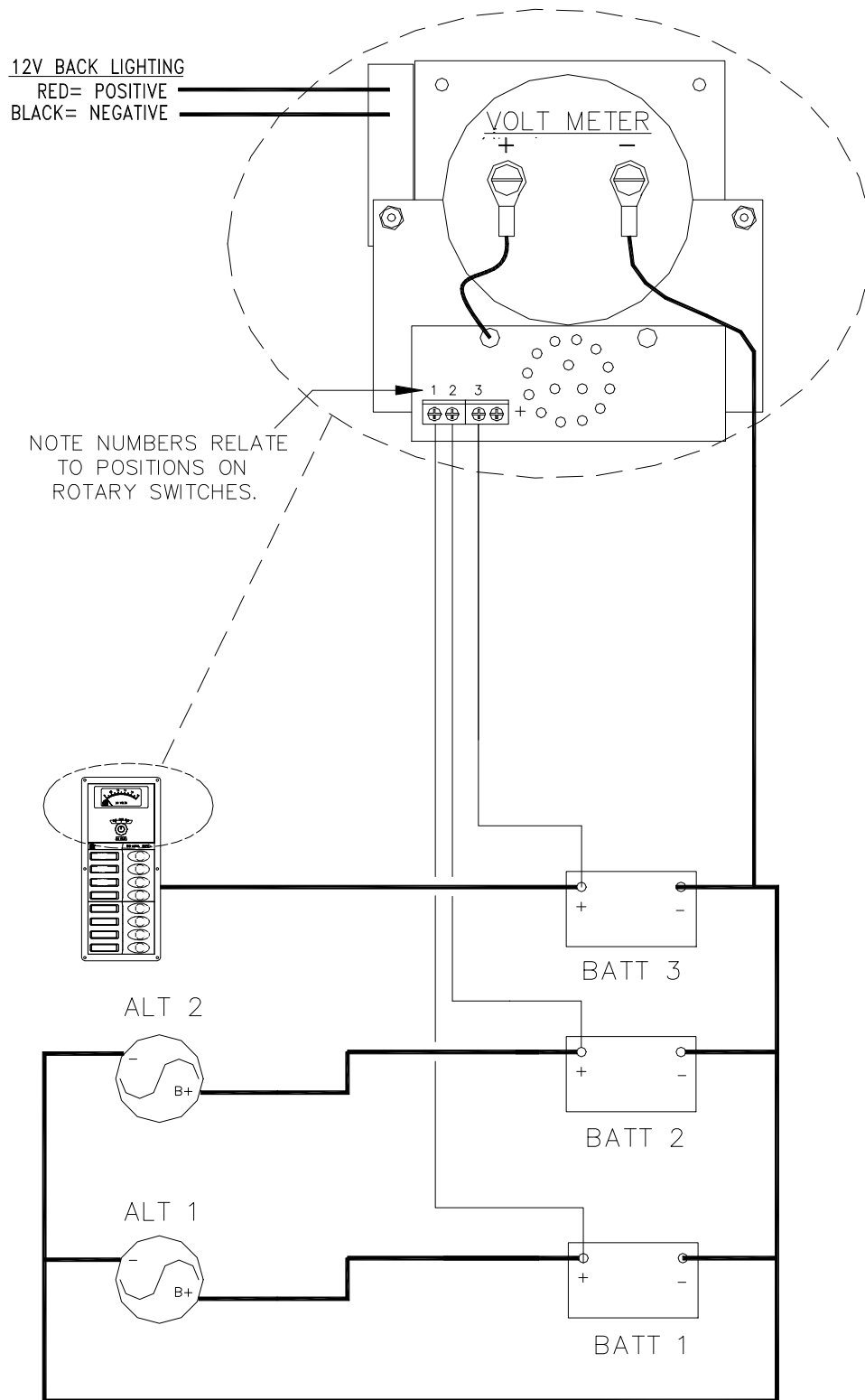
REAR VIEW OF STANDARD PANEL (LARGER THAN 36 WAY)

\* FOR PANELS LARGER THAN 36 WAY USE INDIVIDUAL DROPPING RESISTORS FOR EACH BANK OF BACKLIGHTING. (AS SHOWN BELOW)



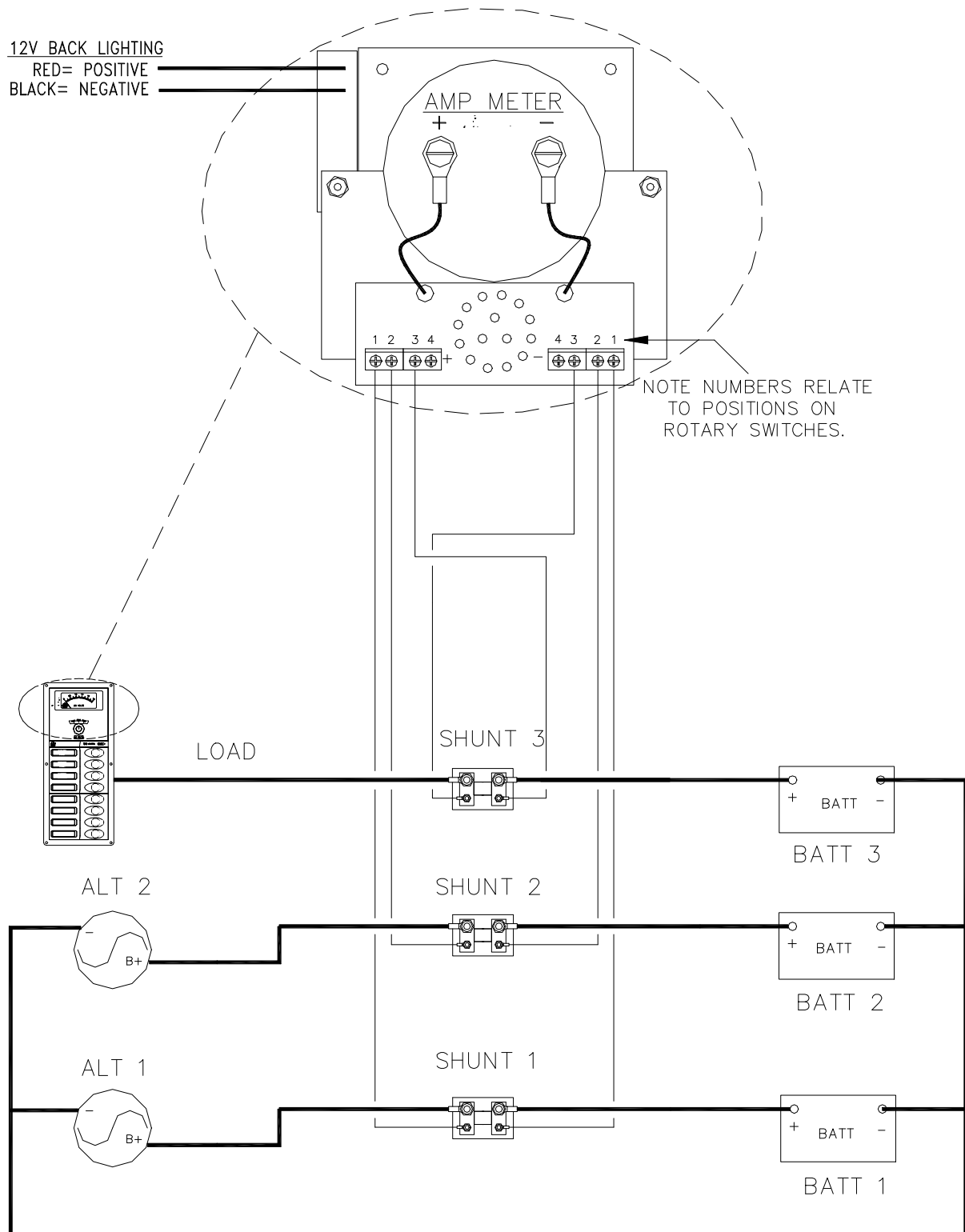
## 7 VOLTMETER WIRING DIAGRAM

*Note: The circuit below is an example only, its purpose is to show the meter connections.*



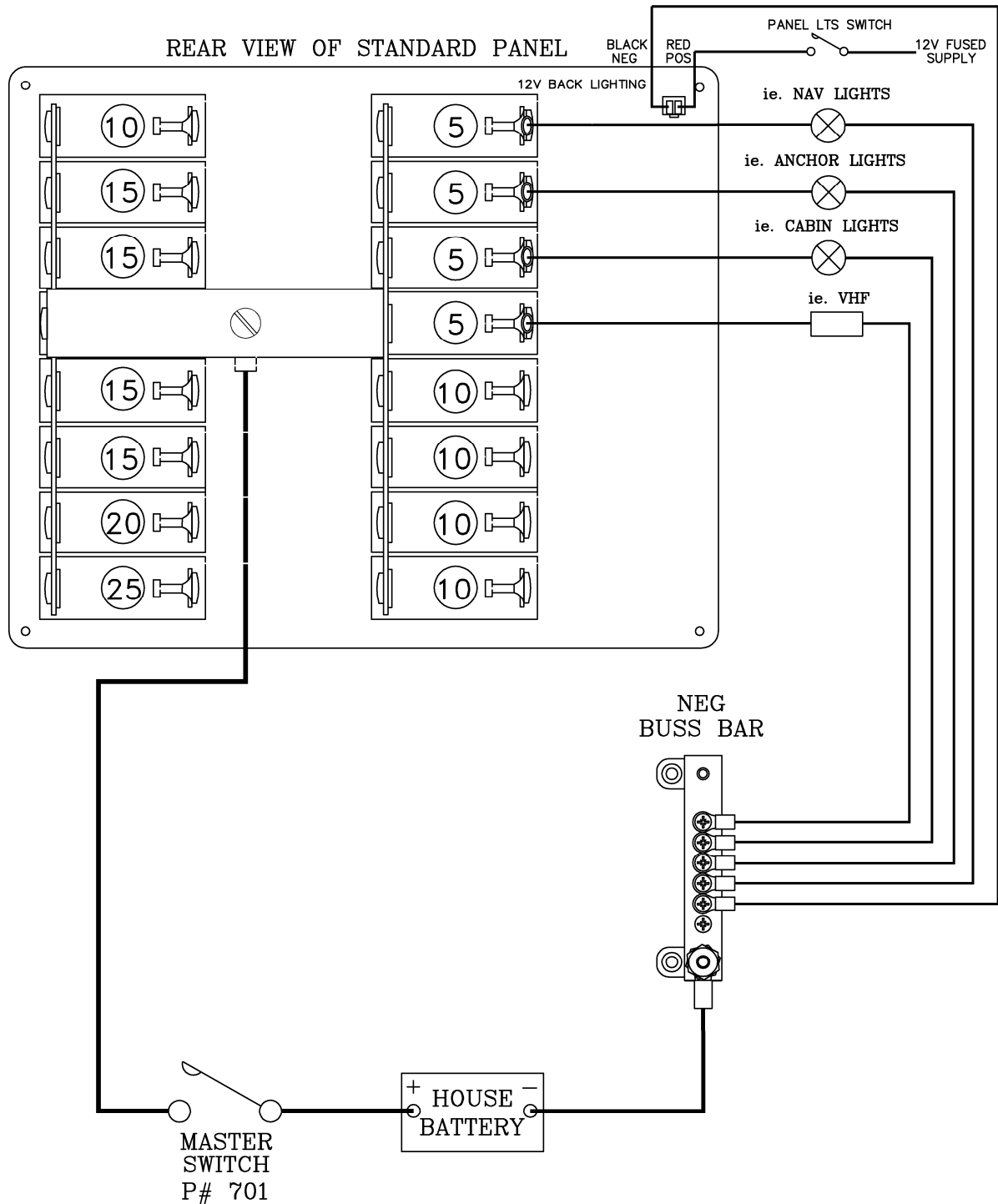
## 8 AMMETER WIRING DIAGRAM

*Note: The circuit below is an example only, its purpose is to show the meter connections.*



## 9 PANEL WIRING DIAGRAM

*Note: The circuit below is an example only, its purpose is to show the meter connections.*



## 10 LABEL SETS

| <b>SET 1N</b>     | <b>SET 2N</b>          | <b>SET 3N</b>      | <b>SET 4N</b>         | <b>SET 5N</b>     | <b>SET 6N</b>     | <b>SET 7N</b>         |
|-------------------|------------------------|--------------------|-----------------------|-------------------|-------------------|-----------------------|
| Accessories       | Bait Tank Pump         | 12V Outlets        | Aft Lights            | AC Mains          | AC Mains          | Aft Peak Light        |
| Anchor Light      | Bilge Pump Aft         | 24V Outlets        | Bedroom/Converter     | AC Outlets        | Accessories       | Deck Flood Lights Aft |
| Auto Pilot        | Bilge Pump Forward     | Aft Deck Light     | Davit Winch           | AC Outlets        | Anchor Wash       | Deck Flood Lights Fwd |
| Bilge Pump        | Bilge Pump Mid         | Bilge Auto Man.    | Engine Alternator     | Air Conditioning  | Automatic         | Deck Lights           |
| Cabin Lights      | Bilge Pump Port        | Bow Lights         | Fire System           | Battery Charger   | Autopilot         | Deck Lights Aft       |
| Cabin Lights      | Bilge Pump Starboard   | Docking Lights     | Fish Finder           | Cook Top          | Auxiliary         | Deck Lights Forward   |
| Cockpit Lights    | Blower                 | Emergency Parallel | Fishing Light         | Dishwasher        | Bilge Auto Manual | Deck Lights Port      |
| Compass Lights    | Boarding Light         | Engine Alarm       | Galley/Bath           | Dive Comp         | Bilge Lights      | Deck Lights Starboard |
| DC Outlets        | Cabin Lights Aft       | Engine Blowers     | Heater Fans           | Dryer             | Boom Furl         | Fish Room Lights      |
| Depthsounder      | Cabin Lights Fwd       | Extraction Fan     | House Alternator      | Frequency         | Bridge Lights     | Fish Room Pump        |
| Freezer           | Cabin Lights Mid       | Flood Lights       | Intercom              | Genset            | Burglar Alarm     | Fishing Lights        |
| Freshwater Pump   | Cabin Lights Port      | Fore Deck Light    | Load                  | Heater            | Cabin Fan         | Fishing Lights Green  |
| GPS               | Cabin Lights Starboard | Galley Lt          | Locker Light          | Hotwater Cylinder | CB Radio          | Fishing Lights Red    |
| Instruments       | Deck Wash Pump         | Generator Lights   | Mid Lights            | Ice Maker         | Cell Phone        | Fishing Lights White  |
| LPG Control       | Electric Toilet        | Holding Tank Pump  | Mid Wiper             | Inverter          | Computer          | Fore Deck Light       |
| Mast Light        | Engine Room Lights     | House Batteries    | Mizzen Spreader Light | Inverter Outlets  | DC Mains          | Foscle Light          |
| Navigation Lights | Fridge                 | Lazarette Light    | Plotter               | Microwave         | Fuel Transfer     | Mast Flood Lights Aft |
| Saltwater Pump    | Horn                   | Port               | Port Wiper            | Oven              | Galley Fan        | Mast Flood Lights Fwd |
| Shower Drain      | Nav Lt's Port          | Radio Battery      | Preheat               | Refrigeration     | Hatch Controls    | Net Recorder          |
| Spare             | Nav Lt's Starboard     | Search Light       | Sole Light            | Reverse Polarity  | Hydraulics        | Not Under Command     |
| Spotlight         | Panel Lights           | Starboard          | Starboard Wiper       | Ships Power       | Loud Hailer       | NUC Lights            |
| Spreader Light    | Radar                  | Start Batteries    | Sub Main              | Shore Power       | Macerator         | Plotter               |
| Steaming Light    | Saloon Lights          | Step Light         | Sump Pump             | Trash Compactor   | Manual            | Port Flood Lights     |
| Stereo            | SSB                    | Strobe Light       | Tank Room Lights      | TV                | Night Lights      | Shower Lights         |
| Trim Tabs         | Start                  | Toilet Lt          | Toilet Pump           | Video             | Pelmet Lights     | Stbd Flood Lights     |
| VHF               | Stern Light            | Weather Fax        | Towing Light          | Washing Machine   | Solar Panel       | Toilet Fan            |
| Winch             | Stop                   | Windex Light       | TV/Stereo             | Waste Master      | Stove             | Toilet Light          |
| Wiper             | Tri Light              | Window Washers     | Walvac                | Water Maker       | TV Antenna        | Winch Flood Lights    |

| <b>SET 8N</b>        | <b>SET 9N</b>       | <b>SET 10N</b>       | <b>SET 11N</b>         | <b>SET 12N</b>   | <b>SET 13N</b>         | <b>SET 14N</b>     |
|----------------------|---------------------|----------------------|------------------------|------------------|------------------------|--------------------|
| Anchor Light         | Boiler / Heater     | Air Compressor       | Black Tank Pump        | 24-12V Reducer   | Aft Bilge Alarm        | 210Khz TX          |
| Baragraph Power      | Bow Thruster        | Air Con Galley       | Block Heater           | Aerator          | Bilge Alarm            | 33Khz TX           |
| Cabin Fans           | DC/DC Converter     | Air Con Guest Room   | Block Heater Port      | Ballast Aft      | Bilge Alarm Test       | Aft Hold Light     |
| Cabin Fans Aft       | Deck Lights Forward | Air Con Master State | Block Heater Starboard | Ballast Control  | Bilge Auto             | Cockpit Freezer    |
| Cabin Fans Fwd       | Decklights Aft      | Air Con Pilot House  | Central Vacuum         | Ballast Fwd      | Bilge Lights           | Engine Controls    |
| Courtesy Lts         | Decklights Mid      | Air Con Salon        | Compactor              | Black Tank Aft   | Bilge Manual           | Fire Pump          |
| Courtesy Lts Aft     | Decklights Upper    | Air Con Saloon       | Cupboard Heaters       | Black Tank Fwd   | Bilge Pump Auto/Manual | Fluxgate Compass   |
| Courtesy Lts Fwd     | Defroster           | Air Con State Room   | Engine Heater          | Black Water Pump | Fwd Bilge Alarm        | Flybridge Freezer  |
| Courtesy Lts Mid     | Galley Lights       | Air Con V-Berth      | Entertainment Centre   | Boom Light       | High Water Alarm       | Fridge/Freezer     |
| Diesel Heater        | Grey Water Pump     | Air Conditioning     | Fresh Water Pump       | Bridge Lights    | Mid Bilge Alarm        | Fuel Gauge         |
| Fire System          | Guest State Lights  | Air Conditioning 1   | Garburator             | Bridge Supply    | Port Aft Bilge Alarm   | Fuel Transfer Port |
| Fuel Pump            | Head Pump 1         | Air Conditioning 2   | Generator 1            | Dining Lights    | Port Aft Bilge Auto    | Fuel Transfer Stbd |
| Hailer               | Head Pump 2         | Air Conditioning 3   | Generator 2            | Fire Alarm       | Port Aft Bilge Manual  | Fwd Hold Light     |
| Lectrasan            | Master State Lights | Central Vacuum       | Heat/Defroster         | Flow Alarm       | Port Fwd Bilge Alarm   | Gantry Lights      |
| Lectrasan Fwd        | Nav Lights          | Charger Generator    | Hot Circ Pump          | Interior Lights  | Port Fwd Bilge Auto    | Holding Tank Port  |
| Lectrasan Stbd       | Oil Pump            | Charger House        | Ice Maker Lower        | Luff Light       | Port Fwd Bilge Manual  | Holding Tank Stbd  |
| Port Engine Controls | Pilot House Lights  | Charger Inverter     | Ice Maker Upper        | Modem            | Port Mid Bilge Alarm   | Masthead Light     |
| Port Ignition        | Saloon Lights       | Compactor            | Ignition               | Nav Area Fan     | Port Mid Bilge Auto    | Pilot Light Red    |
| Sat Com              | Search Light        | Engine Room Fans     | Inverter 1             | Outlets Aft      | Port Mid Bilge Manual  | Pilot Light White  |
| Shower Light         | Spare               | Hot Circ Pump        | Inverter 2             | Outlets Fwd      | Stbd Aft Bilge Alarm   | Port Fuel Filter   |
| Spare                | Spare               | Ice Maker Lower      | Lazer Plotter          | Outlets Mid      | Stbd Aft Bilge Auto    | Rudder Indicator   |
| Spare                | Stereo              | Ice Maker Upper      | Lighting Inverter      | Outlets Port     | Stbd Aft Bilge Manual  | Stbd Fuel Filter   |
| Spare                | Trim Tab Control    | Outlets Engine Room  | Range Sub Panel        | Outlets Stbd     | Stbd Fwd Bilge Alarm   | Steering           |
| Stabilizer           | V-Berth Lights      | Outlets External     | Refrigerator           | Port Engine      | Stbd Fwd Bilge Auto    | Toilet Aft         |
| Stbd Engine Controls | VHF Lower           | Outlets Galley       | Telephone System       | Riding Light     | Stbd Fwd Bilge Manual  | Toilet Fwd         |
| Stbd Ignition        | VHF Upper           | Outlets Lower Deck   | TV/Video               | Stbd Engine      | Stbd Mid Bilge Alarm   | Towing Light Amber |
| Toilet Light         | Wash Down Pump      | Outlets Upper Deck   | Water Circ Pump        | Step Lights      | Stbd Mid Bilge Auto    | Towing Light White |
| Waste Treatment      | Windlass            | Water Heater         | Zone Valves            | Strobe           | Stbd Mid Bilge Manual  | Tuna Tubes         |



| <b>SET 15N</b>         | <b>SET 16N</b>            | <b>SET 17N</b>            | <b>SET 18N</b>      | <b>SET 19N</b>      | <b>SET 20N</b>          | <b>SET 22N</b>        |
|------------------------|---------------------------|---------------------------|---------------------|---------------------|-------------------------|-----------------------|
| 12v Outlet Flybridge   | AC Outlets Aft            | 24 Hour Circuits          | 27 Meg              | 12V Battery Charger | 12v Aux Horn            | Alarms                |
| 24v DC Mains           | AC Outlets Aft Cabin      | Aft Bilge Pump Auto / Man | Aft Holding Tank    | 12V Battery Charger | Aft Fridge              | CCTV                  |
| Arch Lights            | AC Outlets Cockpit        | Aft Head                  | Aft Water Heater    | 24hr Bilge Pump     | Alternator              | Cockpit Fridge        |
| Bilge Pump Clutch      | AC Outlets Deck           | Alarm Mute                | Cabin Outlets       | 24V Battery Charger | Anchor Winch            | Communications        |
| Bow Bilge High Water   | AC Outlets Fwd            | Depth / Speed             | Cockpit Fridge      | Bilge Pump Port Fwd | Bathroom Fan            | Control Max 2.0       |
| Cabin Heater           | AC Outlets Fwd Cabin      | Electronics               | DC Mains 1          | Bilge Pump Port Mid | Bathroom Outlets        | Deck Lights           |
| Compass                | AC Outlets Galley         | Engine Alarm              | DC Mains 2          | Bilge Pump Stbd Aft | Bridge Supply           | Earth Leakage Lights  |
| Demister               | AC Outlets Guest Cabin    | Fans                      | Dehumidifier        | Bilge Pump Stbd Fwd | Docking Lights          | Emergency Parallel    |
| Dry Head Pump          | AC Outlets Mid            | Fwd Bilge Pump Auto / Man | DVD                 | Bilge Pump Stbd Mid | Engine Room Bilge Alarm | Engine Room Main      |
| Engine Clutch Pump     | AC Outlets Port           | Fwd Head                  | Engine Blower       | Boarding Platform   | Fax                     | Equipment Room        |
| Flybridge Hatch        | AC Outlets Salon          | Galley / Head Vent        | Engine Room Outlets | Bulwark Lights      | Fish Finder             | Flybridge Lights      |
| Flybridge Wipers       | AC Outlets Saloon         | Galley Fridge             | Entertainment       | Bunk Lights         | Holding Tank Gauge      | Fresh Water Pump Port |
| Freezer Clutch         | AC Outlets Staterooms     | Gas Stove                 | Flybridge Main      | Cable Master        | Icemaker                | Fresh Water Pump Stbd |
| Fwd Stateroom Lights   | AC Outlets Stbd           | Gauges                    | FWD Holding Tank    | Desalinator         | Inverter/Charger        | Genset Start          |
| Greywater Pump 1       | AC Outlets Wheelhouse     | Head Pump                 | FWD Water Heater    | Dishwasher          | Lake Water              | Genset Stop           |
| Greywater Pump 2       | Aircon Aft Deck           | Level Indicator           | Galley              | Electric Windows    | Master Head             | Grill                 |
| Guest Cabin Stereo     | Aircon Aft                | Lights                    | Gas Solenoid        | Engine Controls     | RCD                     | Head/Galley Vent      |
| Inmarsat               | Aircon Cabin              | Mid Bilge Pump Auto / Man | Generator           | Macerator           | Reset                   | HF Radio              |
| Instrument Lights      | Aircon Fwd                | Nav & Inst Lights         | GFCI Outlet         | Oil Pump            | Salon Lights            | Ignition Start        |
| Instruments Flybridge  | Aircon Fwd Deck           | Oil Pressure              | Hatch Lifter        | Pitch Control       | Shaver Outlets          | Mid Hold Lights       |
| Instruments Pilothouse | Aircon Helm               | Pt Engine                 | Helm Main           | Port Air Con        | Sounder                 | Radio Light           |
| Master Head Lights     | Aircon Port               | Pt Engine Start / Stop    | Hour Meter          | Port Engine         | Speed                   | Radios                |
| Nav Area Lights        | Aircon Pump               | Stb Engine Start / Stop   | Laundry             | Sonar               | Sum Log                 | Refrigerator          |
| Overhead Lights        | Aircon Stbd               | Stbd Engine               | LPG/Cooktop         | Spa                 | Toilet Port             | Reverse Polarity Test |
| Overhead Saloon Lights | Airhandler Fwd Stateroom  | Sum Log                   | Navigation          | Stbd Air Con        | Toilet Stbd             | UHF Radio             |
| Saloon Wipers          | Airhandler Mstr Stateroom | Synchronizer              | Range               | Stbd Engine         | Trolling                | VHF Radio             |
| Security System        | Airhandler Pilothouse     | Water Temp                | TV /DVD             | Storeroom Lights    | TV lift                 | Wheelhouse Lights     |
| Underfloor Lights      | Airhandler Saloon         | Windshield                | UHF                 | TV                  | Wind Instruments        | Wine Cooler           |

| <b>SET 23N</b>       | <b>SET 24N</b>       | <b>SET-25N</b>              | <b>SET 26N</b>                 |
|----------------------|----------------------|-----------------------------|--------------------------------|
| Air Con Port         | Bedroom Lights       | 12V DOOR                    | DC Fridge                      |
| Air Con Stbd         | Ceiling Lights       | 12V SPARE                   | Deck & Courtesy Lights         |
| Berth Lights         | Deck Flood Lights    | AFT FANS                    | Electronics overhead panel     |
| Blower               | Diesel Heater        | AFT TOILET LIGHTS           | Engine Room & Lazarette Lights |
| Cabin Lights Main    | Discharge Pump       | BLACK WATER DISCHARGE       | Engine Room Sump Pump          |
| Cooling Pump 1       | Extract Fan          | ENGINE ROOM EXHAUST         | Genset Charger                 |
| Cooling Pump 2       | Flybridge Clutch     | ENGINE ROOM INTAKE          | Head Vent                      |
| Discharge            | Flybridge Stereo     | FWD FANS                    | High Exhaust Temp Port         |
| Discharge            | Fwd Cabin Stereo     | FWD TOILET LIGHTS           | High Exhaust Temp Stbd         |
| Discharge            | Fwd Spot Light       | HELM DECK LIGHTS            | Lower 12V Mains                |
| Discharge            | Gas Heater           | HELM FRIDGE                 | Lower 24V Mains                |
| Emergency Lights     | LPG/Cooktop          | HIGH WATER BILGE PUMP       | Port Electric Head             |
| Gallery Fridge       | Macerator Pump       | PORT BILGE PUMP AUTO/MANUAL | Port Engine Fault              |
| Helm Lights          | Network              | PORT ENGINE IGNITION        | Port Engine Maintenance        |
| Macerator            | Outside Lights       | PORT ENGINE START           | Port Engine Start/Stop         |
| Master Cabin Lights  | Port Cabin Stereo    | PORT HEAD                   | Port & Stbd Cabin Lights       |
| Port Engine Controls | Port Macerator       | PORT TOILET LIGHTS          | Stbd Electric Head             |
| Port Engine Controls | Reading Lights       | PORT VENT                   | Stbd Engine Fault              |
| Port Engine Controls | Running Lights       | SATELLITE                   | Stbd Engine Maintenance        |
| Quartz Lights        | Salon Stereo         | SLOW VESSEL MODE            | Stbd Engine Start/Stop         |
| Stbd Engine Controls | Stbd Cabin Stereo    | STBD BILGE PUMP AUTO/MANUAL | Stereo Inverter                |
| Stbd Engine Controls | Stbd Macerator       | STBD ENGINE IGNITION        | Upper 12V Mains                |
| Stbd Engine Controls | Underwater Lights    | STBD ENGINE START           | Upper 24V Mains                |
| Stereo Memory        | Wardrobe Lights      | STBD HEAD                   | Vacuum Flush                   |
| Storage Bin Pump     | Water Gauge          | STBD TOILET LIGHTS          | Vacuum Pump                    |
| Waterblaster         | Accommodation        | STBD VENT                   | Wait To Start Port             |
| Air Con Flybridge    | Accommodation Lights | SUNROOF                     | Wait To Start Stbd             |
| Air Con Fwd          | Aft Spot Light       | TOILET LIGHTS               | Windsheild Lift                |

|  |  |  |   |   |  |
|--|--|--|---|---|--|
| <b>AFT BILGE ALARM</b> <ul style="list-style-type: none"> <li>SET-13N</li> <li>Aft Bilge Alarm</li> <li>Bilge Alarm</li> <li>Bilge Alarm Test</li> <li>Bilge Auto</li> <li>Bilge Lights</li> <li>Bilge Manual</li> <li>Bilge Pump Auto/Manual</li> <li>Fwd Bilge Alarm</li> <li>High Water Alarm</li> <li>Mid Bilge Alarm</li> <li>Port Aft Bilge Alarm</li> <li>Port Aft Bilge Auto</li> <li>Port Aft Bilge Manual</li> <li>Port Fwd Bilge Alarm</li> <li>Port Fwd Bilge Auto</li> <li>Port Fwd Bilge Manual</li> <li>Port Mid Bilge Alarm</li> <li>Port Mid Bilge Auto</li> <li>Port Mid Bilge Manual</li> <li>Stbd Aft Bilge Alarm</li> <li>Stbd Aft Bilge Auto</li> <li>Stbd Aft Bilge Manual</li> <li>Stbd Fwd Bilge Alarm</li> <li>Stbd Fwd Bilge Auto</li> <li>Stbd Fwd Bilge Manual</li> <li>Stbd Mid Bilge Alarm</li> <li>Stbd Mid Bilge Auto</li> <li>Stbd Mid Bilge Manual</li> </ul> | <b>210KHZ TX</b> <ul style="list-style-type: none"> <li>SET-14N</li> <li>210KHz TX</li> <li>33KHz TX</li> <li>Aft Hold Light</li> <li>Cockpit Freezer</li> <li>Engine Controls</li> <li>Fridge/Freezer</li> <li>Fire Pump</li> <li>Fluxgate Compass</li> <li>Flybridge Freezer</li> <li>Fuel Gauge</li> <li>Fuel Transfer Port</li> <li>Fuel Transfer Stbd</li> <li>Fwd Hold Light</li> <li>Gantry Lights</li> <li>Holding Tank Port</li> <li>Holding Tank Stbd</li> <li>Masthead Light</li> <li>Pilot Light Red</li> <li>Pilot Light White</li> <li>Port Fuel Filter</li> <li>Rudder Indicator</li> <li>Stbd Fuel Filter</li> <li>Steering</li> <li>Toilet Aft</li> <li>Toilet Fwd</li> <li>Towing Light Amber</li> <li>Towing Light White</li> <li>Tuna Tubes</li> </ul> | <b>12V OUTLETS FLYBRIDGE</b> <ul style="list-style-type: none"> <li>SET-15N</li> <li>12v Outlet Flybridge</li> <li>Arch Lights</li> <li>Bilge Pump Clutch</li> <li>Cabin Heater</li> <li>Compass</li> <li>Dry Head Pump</li> <li>Demister</li> <li>Engine Clutch Pump</li> <li>Flybridge Hatch</li> <li>Flybridge Wipers</li> <li>Freezer Clutch</li> <li>Fwd Stateroom Lights</li> <li>Greywater Pump 1</li> <li>Greywater Pump 2</li> <li>Guest Cabin Stereo</li> <li>Inmarsat</li> <li>Instrument Lights</li> <li>Instruments Flybridge</li> <li>Instruments Pilothouse</li> <li>Master Head Lights</li> <li>Nav Area Lights</li> <li>Overhead Lights</li> <li>Overhead Saloon Lights</li> <li>Saloon Wipers</li> <li>Security System</li> <li>Underfloor Lights</li> <li>24v DC Mains</li> <li>Bow Bilge High Water</li> </ul> | <b>AC OUTLETS AFT</b> <ul style="list-style-type: none"> <li>SET-16N</li> <li>AC Outlets Aft</li> <li>AC Outlets Aft Cabin</li> <li>AC Outlets Cockpit</li> <li>AC Outlets Deck</li> <li>AC Outlets Fwd</li> <li>AC Outlets Fwd Cabin</li> <li>AC Outlets Galley</li> <li>AC Outlets Guest Cabin</li> <li>AC Outlets Mid</li> <li>AC Outlets Port</li> <li>AC Outlets Salon</li> <li>AC Outlets Saloon</li> <li>AC Outlets Staterooms</li> <li>AC Outlets Stbd</li> <li>AC Outlets Wheelhouse</li> <li>Aircon Aft</li> <li>Aircon Aft Deck</li> <li>Aircon Cabin</li> <li>Aircon Fwd</li> <li>Aircon Fwd Deck</li> <li>Aircon Helm</li> <li>Aircon Pump</li> <li>Aircon Port</li> <li>Aircon Stbd</li> <li>Airhandler Fwd Stateroom</li> <li>Airhandler Mstr Stateroom</li> <li>Airhandler Pilothouse</li> <li>Airhandler Saloon</li> </ul> | <b>24 HOUR CIRCUITS</b> <ul style="list-style-type: none"> <li>SET-17N</li> <li>24 Hour Circuits</li> <li>Aft Bilge Pump Auto / Man</li> <li>Aft Head</li> <li>Alarm Mute</li> <li>Depth / Speed</li> <li>Electronics</li> <li>Engine Alarm</li> <li>Fans</li> <li>Fwd Bilge Pump Auto / Man</li> <li>Fwd Head</li> <li>Galley / Head Vent</li> <li>Galley Fridge</li> <li>Gas Stove</li> <li>Gauges</li> <li>Head Pump</li> <li>Level Indicator</li> <li>Lights</li> <li>Mid Bilge Pump Auto / Man</li> <li>Nav &amp; Inst Lights</li> <li>Oil Pressure</li> <li>Pt Engine</li> <li>Pt Engine Start / Stop</li> <li>Stbd Engine</li> <li>Stb Engine Start / Stop</li> <li>Sum Log</li> <li>Synchronizer</li> <li>Water Temp</li> <li>Windshield</li> </ul> | <b>27 MEG</b> <ul style="list-style-type: none"> <li>SET-18N</li> <li>27 Meg</li> <li>Aft Holding Tank</li> <li>Aft Water Heater</li> <li>Cabin Outlets</li> <li>Cockpit Fridge</li> <li>DC Mains 1</li> <li>DC Mains 2</li> <li>Dehumidifier</li> <li>DVD</li> <li>Engine Blower</li> <li>Engine Room Outlets</li> <li>Entertainment</li> <li>Flybridge Main</li> <li>FWD Holding Tank</li> <li>FWD Water Heater</li> <li>Galley</li> <li>Gas Solenoid</li> <li>Generator</li> <li>GFCI Outlet</li> <li>Hatch Lifter</li> <li>Helm Main</li> <li>Hour Meter</li> <li>Laundry</li> <li>LPG/Cooktop</li> <li>Navigation</li> <li>Range</li> <li>TV /DVD</li> <li>UHF</li> </ul> |
| <b>12V BATTERY CHARGER</b> <ul style="list-style-type: none"> <li>SET-19N</li> <li>12V Battery Charger</li> <li>24hr Bilge Pump</li> <li>24V Battery Charger</li> <li>12V Battery Charger</li> <li>Bilge Pump Port Fwd</li> <li>Bilge Pump Port Mid</li> <li>Bilge Pump Stbd Aft</li> <li>Bilge Pump Stbd Fwd</li> <li>Bilge Pump Stbd Mid</li> <li>Boarding Platform</li> <li>Bulwark Lights</li> <li>Bunk Lights</li> <li>Cable Master</li> <li>Desalinator</li> <li>Dishwasher</li> <li>Electric Windows</li> <li>Engine Controls</li> <li>Macerator</li> <li>Oil Pump</li> <li>Pitch Control</li> <li>Port Air Con</li> <li>Port Engine</li> <li>Sonar</li> <li>Storeroom Lights</li> <li>Spa</li> <li>Stbd Air Con</li> <li>Stbd Engine</li> <li>TV</li> </ul>  | <b>12V AUX HORN</b> <ul style="list-style-type: none"> <li>SET-20N</li> <li>12v Aux Horn</li> <li>Aft Fridge</li> <li>Alternator</li> <li>Anchor Winch</li> <li>Bathroom Fan</li> <li>Bathroom Outlets</li> <li>Bridge Supply</li> <li>Docking Lights</li> <li>Engine Room Bilge Alarm</li> <li>Fax</li> <li>Fish Finder</li> <li>Holding Tank Gauge</li> <li>Icemaker</li> <li>Inverter/Charger</li> <li>Lake Water</li> <li>Master Head</li> <li>RCD</li> <li>Reset</li> <li>Salon Lights</li> <li>Shaver Outlets</li> <li>Sounder</li> <li>Speed</li> <li>Sum Log</li> <li>Toilet Port</li> <li>Toilet</li> <li>Stbd Trolling</li> <li>TV lift</li> <li>Wind Instruments</li> </ul>   | <b>ALARMS</b> <ul style="list-style-type: none"> <li>SET-22N</li> <li>Alarms</li> <li>CCTV</li> <li>Cockpit Fridge</li> <li>Communications</li> <li>Control Max 2.0</li> <li>Deck Lights</li> <li>Earth Leakage Lights</li> <li>Emergency Parallel</li> <li>Engine Room Main</li> <li>Equipment Room</li> <li>Flybridge Lights</li> <li>Fresh Water Pump Port</li> <li>Fresh Water Pump Stbd</li> <li>Genset Start</li> <li>Genset Stop</li> <li>Grill</li> <li>Head/Galley Vent</li> <li>HF Radio</li> <li>Ignition Start</li> <li>Mid Hold Lights</li> <li>Radio Light</li> <li>Radios</li> <li>Refrigerator</li> <li>Reverse Polarity Test</li> <li>UHF Radio</li> <li>VHF Radio</li> <li>Wheelhouse Lights</li> <li>Wine Cooler</li> </ul>   | <b>AIR CON FLYBRIDGE</b> <ul style="list-style-type: none"> <li>SET-23N</li> <li>Air Con Flybridge</li> <li>Air Con Fwd</li> <li>Air Con Port</li> <li>Air Con Stbd</li> <li>Berth Lights</li> <li>Blower</li> <li>Cabin Lights Main</li> <li>Cooling Pump 1</li> <li>Cooling Pump 2</li> <li>Discharge</li> <li>Discharge</li> <li>Discharge</li> <li>Discharge</li> <li>Emergency Lights</li> <li>Gallery Fridge</li> <li>Helm Lights</li> <li>Macerator</li> <li>Master Cabin Lights</li> <li>Port Engine Controls</li> <li>Port Engine Controls</li> <li>Port Engine Controls</li> <li>Quartz Lights</li> <li>Stbd Engine Controls</li> <li>Stbd Engine Controls</li> <li>Stbd Engine Controls</li> <li>Stereo Memory</li> <li>Storage Bin Pump</li> <li>Waterblaster</li> </ul>  | <b>CABINE AVANT</b> <ul style="list-style-type: none"> <li>SET-FRENCH</li> <li>Cabine Avant</li> <li>Cabine Babord</li> <li>Cabine Tribord</li> <li>Dessalinisateur</li> <li>Divers</li> <li>ECL Interieur</li> <li>Essuie-Glace</li> <li>Feu De Hune</li> <li>Feu De Mouillage</li> <li>Feu De Port</li> <li>Feux De Navigation</li> <li>Flaps Trim Tabs</li> <li>GPS</li> <li>Groupe D'Eau</li> <li>Guindeau</li> <li>Instruments</li> <li>Pilote Automatique</li> <li>Pompe De Cale</li> <li>Prise 12V</li> <li>Refrigerateur</li> <li>Salle De Bain</li> <li>Salle Machine</li> <li>Sondeur</li> <li>Stereo</li> <li>Table A Carte</li> <li>Timonerie</li> <li>Ventilateur De Cale</li> <li>VHF</li> </ul>  | <b>AUXILIAIRE 1</b> <ul style="list-style-type: none"> <li>SET-FRENCH 2</li> <li>Auxiliaire 1</li> <li>Auxiliaire 2</li> <li>Avertisseur</li> <li>Cabin 2</li> <li>Cabin 3</li> <li>Cabine 1</li> <li>Centrale Nav</li> <li>Chauffage</li> <li>Chauffe-Eau</li> <li>Confort</li> <li>Congelateur</li> <li>Divers</li> <li>Edairage Babord</li> <li>Edairage Carré</li> <li>Edairage Nacelle</li> <li>Edairage Tribord</li> <li>Electronique</li> <li>Feu Tricolore</li> <li>Hi-Fi</li> <li>Micro-Ondes</li> <li>Pompe Babord</li> <li>Pompe De Lavage</li> <li>Pompe Douche</li> <li>Pompe Tribord</li> <li>Radar</li> <li>Spots</li> <li>Toilettes</li> <li>Winch</li> </ul>  |

|  |  |  |   |   |   |
|--|--|--|---|---|---|
| <b>AFT BILGE ALARM</b> <ul style="list-style-type: none"> <li>SET-13N</li> <li>Aft Bilge Alarm</li> <li>Bilge Alarm</li> <li>Bilge Alarm Test</li> <li>Bilge Auto</li> <li>Bilge Lights</li> <li>Bilge Manual</li> <li>Bilge Pump Auto/Manual</li> <li>Fwd Bilge Alarm</li> <li>High Water Alarm</li> <li>Mid Bilge Alarm</li> <li>Port Aft Bilge Alarm</li> <li>Port Aft Bilge Auto</li> <li>Port Aft Bilge Manual</li> <li>Port Fwd Bilge Alarm</li> <li>Port Fwd Bilge Auto</li> <li>Port Fwd Bilge Manual</li> <li>Port Mid Bilge Alarm</li> <li>Port Mid Bilge Auto</li> <li>Port Mid Bilge Manual</li> <li>Stbd Aft Bilge Alarm</li> <li>Stbd Aft Bilge Auto</li> <li>Stbd Aft Bilge Manual</li> <li>Stbd Fwd Bilge Alarm</li> <li>Stbd Fwd Bilge Auto</li> <li>Stbd Fwd Bilge Manual</li> <li>Stbd Mid Bilge Alarm</li> <li>Stbd Mid Bilge Auto</li> <li>Stbd Mid Bilge Manual</li> </ul> | <b>210KHZ TX</b> <ul style="list-style-type: none"> <li>SET-14N</li> <li>210KHz TX</li> <li>33KHz TX</li> <li>Aft Hold Light</li> <li>Cockpit Freezer</li> <li>Engine Controls</li> <li>Fridge/Freezer</li> <li>Fire Pump</li> <li>Fluxgate Compass</li> <li>Flybridge Freezer</li> <li>Fuel Gauge</li> <li>Fuel Transfer Port</li> <li>Fuel Transfer Stbd</li> <li>Fwd Hold Light</li> <li>Gantry Lights</li> <li>Holding Tank Port</li> <li>Holding Tank Stbd</li> <li>Masthead Light</li> <li>Pilot Light Red</li> <li>Pilot Light White</li> <li>Port Fuel Filter</li> <li>Rudder Indicator</li> <li>Stbd Fuel Filter</li> <li>Steering</li> <li>Toilet Aft</li> <li>Toilet Fwd</li> <li>Towing Light Amber</li> <li>Towing Light White</li> <li>Tuna Tubes</li> </ul> | <b>12V OUTLETS FLYBRIDGE</b> <ul style="list-style-type: none"> <li>SET-15N</li> <li>12v Outlet Flybridge</li> <li>Arch Lights</li> <li>Bilge Pump Clutch</li> <li>Cabin Heater</li> <li>Compass</li> <li>Dry Head Pump</li> <li>Demister</li> <li>Engine Clutch Pump</li> <li>Flybridge Hatch</li> <li>Flybridge Wipers</li> <li>Freezer Clutch</li> <li>Fwd Stateroom Lights</li> <li>Greywater Pump 1</li> <li>Greywater Pump 2</li> <li>Guest Cabin Stereo</li> <li>Inmarsat</li> <li>Instrument Lights</li> <li>Instruments Flybridge</li> <li>Instruments Pilothouse</li> <li>Master Head Lights</li> <li>Nav Area Lights</li> <li>Overhead Lights</li> <li>Overhead Saloon Lights</li> <li>Saloon Wipers</li> <li>Security System</li> <li>Underfloor Lights</li> <li>24v DC Mains</li> <li>Bow Bilge High Water</li> </ul> | <b>AC OUTLETS AFT</b> <ul style="list-style-type: none"> <li>SET-16N</li> <li>AC Outlets Aft</li> <li>AC Outlets Aft Cabin</li> <li>AC Outlets Cockpit</li> <li>AC Outlets Deck</li> <li>AC Outlets Fwd</li> <li>AC Outlets Fwd Cabin</li> <li>AC Outlets Galley</li> <li>AC Outlets Guest Cabin</li> <li>AC Outlets Mid</li> <li>AC Outlets Port</li> <li>AC Outlets Salon</li> <li>AC Outlets Saloon</li> <li>AC Outlets Staterooms</li> <li>AC Outlets Stbd</li> <li>AC Outlets Wheelhouse</li> <li>Aircon Aft</li> <li>Aircon Aft Deck</li> <li>Aircon Cabin</li> <li>Aircon Fwd</li> <li>Aircon Fwd Deck</li> <li>Aircon Helm</li> <li>Aircon Pump</li> <li>Aircon Port</li> <li>Aircon Stbd</li> <li>Airhandler Fwd Stateroom</li> <li>Airhandler Mstr Stateroom</li> <li>Airhandler Pilothouse</li> <li>Airhandler Saloon</li> </ul> | <b>24 HOUR CIRCUITS</b> <ul style="list-style-type: none"> <li>SET-17N</li> <li>24 Hour Circuits</li> <li>Aft Bilge Pump Auto / Man</li> <li>Aft Head</li> <li>Alarm Mute</li> <li>Depth / Speed</li> <li>Electronics</li> <li>Engine Alarm</li> <li>Fans</li> <li>Fwd Bilge Pump Auto / Man</li> <li>Fwd Head</li> <li>Galley / Head Vent</li> <li>Galley Fridge</li> <li>Gas Stove</li> <li>Gauges</li> <li>Head Pump</li> <li>Level Indicator</li> <li>Lights</li> <li>Mid Bilge Pump Auto / Man</li> <li>Nav &amp; Inst Lights</li> <li>Oil Pressure</li> <li>Pt Engine</li> <li>Pt Engine Start / Stop</li> <li>Stbd Engine</li> <li>Stb Engine Start / Stop</li> <li>Sum Log</li> <li>Synchronizer</li> <li>Water Temp</li> <li>Windshield</li> </ul> | <b>27 MEG</b> <ul style="list-style-type: none"> <li>SET-18N</li> <li>27 Meg</li> <li>Aft Holding Tank</li> <li>Aft Water Heater</li> <li>Cabin Outlets</li> <li>Cockpit Fridge</li> <li>DC Mains 1</li> <li>DC Mains 2</li> <li>Dehumidifier</li> <li>DVD</li> <li>Engine Blower</li> <li>Engine Room Outlets</li> <li>Entertainment</li> <li>Flybridge Main</li> <li>FWD Holding Tank</li> <li>FWD Water Heater</li> <li>Galley</li> <li>Gas Solenoid</li> <li>Generator</li> <li>GFCI Outlet</li> <li>Hatch Lifter</li> <li>Helm Main</li> <li>Hour Meter</li> <li>Laundry</li> <li>LPG/Cooktop</li> <li>Navigation</li> <li>Range</li> <li>TV /DVD</li> <li>UHF</li> </ul>    |
| <b>12V BATTERY CHARGER</b> <ul style="list-style-type: none"> <li>SET-19N</li> <li>12V Battery Charger</li> <li>24hr Bilge Pump</li> <li>24V Battery Charger</li> <li>12V Battery Charger</li> <li>Bilge Pump Port Fwd</li> <li>Bilge Pump Port Mid</li> <li>Bilge Pump Stbd Aft</li> <li>Bilge Pump Stbd Fwd</li> <li>Bilge Pump Stbd Mid</li> <li>Boarding Platform</li> <li>Bulwark Lights</li> <li>Bunk Lights</li> <li>Cable Master</li> <li>Desalinator</li> <li>Dishwasher</li> <li>Electric Windows</li> <li>Engine Controls</li> <li>Macerator</li> <li>Oil Pump</li> <li>Pitch Control</li> <li>Port Air Con</li> <li>Port Engine</li> <li>Sonar</li> <li>Storeroom Lights</li> <li>Spa</li> <li>Stbd Air Con</li> <li>Stbd Engine</li> <li>TV</li> </ul>  | <b>12V AUX HORN</b> <ul style="list-style-type: none"> <li>SET-20N</li> <li>12v Aux Horn</li> <li>Aft Fridge</li> <li>Alternator</li> <li>Anchor Winch</li> <li>Bathroom Fan</li> <li>Bathroom Outlets</li> <li>Bridge Supply</li> <li>Docking Lights</li> <li>Engine Room Bilge Alarm</li> <li>Fax</li> <li>Fish Finder</li> <li>Holding Tank Gauge</li> <li>Icemaker</li> <li>Inverter/Charger</li> <li>Lake Water</li> <li>Master Head</li> <li>RCD</li> <li>Reset</li> <li>Salon Lights</li> <li>Shaver Outlets</li> <li>Sounder</li> <li>Speed</li> <li>Sum Log</li> <li>Toilet Port</li> <li>Toilet</li> <li>Stbd Trolling</li> <li>TV lift</li> <li>Wind Instruments</li> </ul>   | <b>ALARMS</b> <ul style="list-style-type: none"> <li>SET-22N</li> <li>Alarms</li> <li>CCTV</li> <li>Cockpit Fridge</li> <li>Communications</li> <li>Control Max 2.0</li> <li>Deck Lights</li> <li>Earth Leakage Lights</li> <li>Emergency Parallel</li> <li>Engine Room Main</li> <li>Equipment Room</li> <li>Flybridge Lights</li> <li>Fresh Water Pump Port</li> <li>Fresh Water Pump Stbd</li> <li>Genset Start</li> <li>Genset Stop</li> <li>Grill</li> <li>Head/Galley Vent</li> <li>HF Radio</li> <li>Ignition Start</li> <li>Mid Hold Lights</li> <li>Radio Light</li> <li>Radios</li> <li>Refrigerator</li> <li>Reverse Polarity Test</li> <li>UHF Radio</li> <li>VHF Radio</li> <li>Wheelhouse Lights</li> <li>Wine Cooler</li> </ul>   | <b>AIR CON FLYBRIDGE</b> <ul style="list-style-type: none"> <li>SET-23N</li> <li>Air Con Flybridge</li> <li>Air Con Fwd</li> <li>Air Con Port</li> <li>Air Con Stbd</li> <li>Berth Lights</li> <li>Blower</li> <li>Cabin Lights Main</li> <li>Cooling Pump 1</li> <li>Cooling Pump 2</li> <li>Discharge</li> <li>Discharge</li> <li>Discharge</li> <li>Discharge</li> <li>Emergency Lights</li> <li>Gallery Fridge</li> <li>Helm Lights</li> <li>Macerator</li> <li>Master Cabin Lights</li> <li>Port Engine Controls</li> <li>Port Engine Controls</li> <li>Port Engine Controls</li> <li>Quartz Lights</li> <li>Stbd Engine Controls</li> <li>Stbd Engine Controls</li> <li>Stbd Engine Controls</li> <li>Stereo Memory</li> <li>Storage Bin Pump</li> <li>Waterblaster</li> </ul>  | <b>CABINE AVANT</b> <ul style="list-style-type: none"> <li>SET-FRENCH</li> <li>Cabine Avant</li> <li>Cabine Babord</li> <li>Cabine Tribord</li> <li>Dessalinisateur</li> <li>Divers</li> <li>ECL Interieur</li> <li>Essuie-Glace</li> <li>Feu De Hune</li> <li>Feu De Mouillage</li> <li>Feu De Port</li> <li>Feux De Navigation</li> <li>Flaps Trim Tabs</li> <li>GPS</li> <li>Groupe D'Eau</li> <li>Guindeau</li> <li>Instruments</li> <li>Pilote Automatique</li> <li>Pompe De Cale</li> <li>Prise 12V</li> <li>Refrigerateur</li> <li>Salle De Bain</li> <li>Salle Machine</li> <li>Sondeur</li> <li>Stereo</li> <li>Table A Carte</li> <li>Timonerie</li> <li>Ventilateur De Cale</li> <li>VHF</li> </ul>  | <b>AUXILIAIRE 1</b> <ul style="list-style-type: none"> <li>SET-FRENCH 2</li> <li>Auxiliaire 1</li> <li>Auxiliaire 2</li> <li>Avertisseur</li> <li>Cabin 2</li> <li>Cabin 3</li> <li>Cabine 1</li> <li>Centrale Nav</li> <li>Chauffage</li> <li>Chauffe-Eau</li> <li>Confort</li> <li>Congelateur</li> <li>Divers</li> <li>Eclairage Babord</li> <li>Eclairage Carré</li> <li>Eclairage Nacelle</li> <li>Eclairage Tribord</li> <li>Electronique</li> <li>Feu Tricolore</li> <li>Hi-Fi</li> <li>Micro-Ondes</li> <li>Pompe Babord</li> <li>Pompe De Lavage</li> <li>Pompe Douche</li> <li>Pompe Tribord</li> <li>Radar</li> <li>Spots</li> <li>Toilettes</li> <li>Winch</li> </ul> |

*This page has been deliberately left blank.*



BEP MARINE  
13 Tarndale Grove  
Albany, Auckland, N.Z.  
Ph: +64 9 415 7261  
Fax: +64 9 415 9327  
[www.bepmarine.com](http://www.bepmarine.com)

E-mail: [enquiries@bepmarine.com](mailto:enquiries@bepmarine.com)

Please visit our website for the latest International Distributor List