

DENVER®

OPERATING INSTRUCTIONS

DM-60

**60 SECONDS ANTI-SHOCK
PORTABLE CD PLAYER**

WARNING: TO REDUCE RISK OF FIRE OR ELECTRIC SHOCK, DO NOT EXPOSE THIS APPLIANCE TO RAIN OR MOISTURE.

DENVER®

OPERATING
INSTRUCTIONS

DM-60
60 SECONDS ANTI-SHOCK
PORTABLE CD PLAYER

CAUTION

Use of controls or adjustments or performance of procedures other than those specified herein may result in hazardous radiation exposure.

This compact disc player is classified as a CLASS 1 LASER product.



Invisible laser radiation when open and interlocks defeated. Avoid exposure to beam.

PRECAUTIONS

To maintain good performance Do not use the unit in places which are extremely hot, cold dusty or humid. In particular, do not use or keep the unit in following places.

- in a high humidity area such as a bathroom near a heater
- in an area exposed to direct sunlight (e.g., inside a parked car, where it can become extremely hot)
- near sources of strong magnetism, such as televisions, speakers, or magnets
- where there is a lot of movement or vibration, such as on a car dashboard or an unstable shelf

For safety

- Do not attempt to disassemble this unit. Laser rays from the optical pickup are dangerous to the eyes
- Make sure that pins or other foreign objects do not get inside the player
- Take care not to drop the unit or subject it to strong shocks
- To keep dust from the pickup lens, keep the disc compartment lid closed after use. Never touch the lens
- If you hear no sound when playing a disc, DO NOT turn the volume up high because the music could suddenly begin at high volume. To avoid hurting your ears or damaging the speakers, turn the volume control to the level before starting playback and slowly turn it up to the desired level

Note on listening with the earphones

- listen at moderate volumes to avoid hearing damage
- Do not wear the earphones while driving or cycling. It may create a traffic hazard
- You should use extreme caution or temporarily discontinue use in potentially hazardous situations, such as walking, jogging, etc

CAUTION

Listening to earphone stereo at full power for extended periods of time can result in hearing damage

Do not touch pickup lens




Note on condensation

If the unit is suddenly moved from a cold place to a warm one, it may cause condensation on the pickup lens and malfunction or playback difficulties, should this occur, leave the unit for a few hours, then try playback again.

USING ON DRY CELL BATTERIES **A**

Open the battery compartment and insert two LR6 (size AA) alkaline batteries with the ⊕ and ⊖ marks correctly aligned.

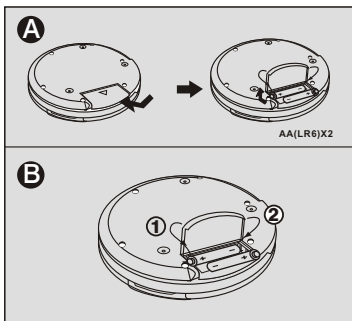
Battery replacement

The battery indicator in the display  according to the remaining power of the batteries. Replace the batteries when  lights. If the unit remains in use after  lights, the operation will stop.

IF THE COVER OF THE BATTERY COMPARTMENT COMES OFF **B**

Note on dry cell batteries



- Do not mix the different types of batteries, or an old battery with a new one
- To prevent the risk of electrolyte leakage or explosions, never recharge the batteries, apply heat to them, or take them apart, must set recharge button to "OFF"
- When not using the batteries, remove them to prevent needless battery wear
- If liquid leaks from the batteries, wipe thoroughly to remove



USING ON RECHARGEABLE BATTERIES **C**

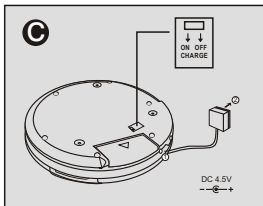
- Be sure to use size AA Ni-Cd or Ni-MH rechargeable batteries, which are commercially available
- Be sure to read the instructions of the purchased rechargeable batteries before use
- Before charging the batteries, close the disc compartment, you cannot charge the batteries while it is opened

1. Insert the rechargeable batteries with the ⊕ and ⊖ marks correctly aligned.
2. When recharge please switch the recharge button to "on", after recharging or in other condition switch to "off", otherwise the CD player will be damaged
3. Connect the AC adaptor.
 - ① to DC 4.5v jack
 - ② to a wall outlet

- Time to recharge the batteries
Recharge the batteries when  lights, if the unit remains in use after  lights, the current operation will stop.

ATTENTION

The rechargeable batteries are recyclable. At the end of their useful life, it may be illegal to dispose the batteries into the municipal waste stream under various state and local laws. Check with your local solid waste officials in your area for details about recycling options or proper disposal.



BEFORE PLAYBACK

HOLD switch **D**

Release the HOLD switch to OFF position before playback.

When not using the unit, set the HOLD switch to the ON position. Accidentally pressed button will not function. If buttons are pressed when the HOLD switch is set to the ON position, "HOLD" will light on the display.

Turn on and off **D**

Turn the power on

Press ►II PLAY/PAUSE. Power is turned on and playback starts.

Turning off the power

If no new operations are done within 30 seconds from the end of last operation, the power is turned off automatically. (Auto power off function) you can turn off the power before it is automatically turned off by pressing ■ STOP

Standby mode **D**

When an operation finishes, the unit goes into standby mode until the auto power off function automatically turns off the power.

To enter standby mode, press ►II PLAY/PAUSE to start playback, then press ■ STOP

Adjusting the sound

Volume **E**

Turn The VOLUME control to adjust the volume.

BASS BOOST **E**

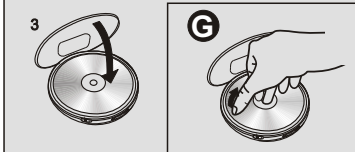
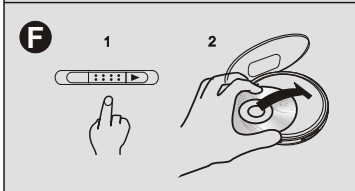
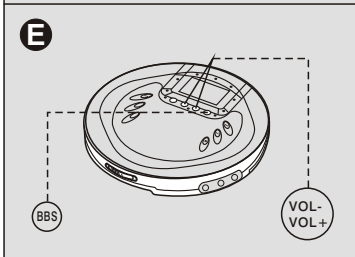
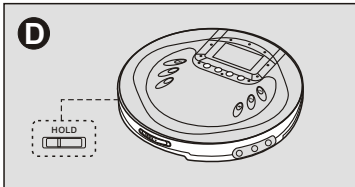
Switch on the BASS BOOST for extra bass emphasized.

Inserting a disc **F**

1. Push the OPEN switch to open the disc compartment.
2. Place a disc in the center with the label side facing up.
3. Close the disc compartment.


To remove the disc **G**

Pick up the disc, holding its edge, while pressing the pivot gently.









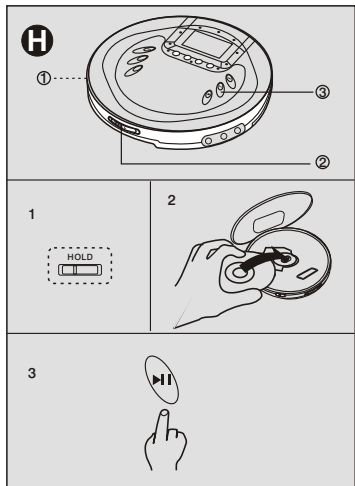
PLAYBACK

Connect the supplied headphone to the PHONE jack.

1. Release HOLD to OFF position.
2. Place a disc.
3. Press  PLAY/PAUSE
Playback starts from the first track.



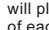


BASIC OPERATION

- To stop: Press  STOP
- To pause: Press  PLAY/PAUSE
To resume, press it again.
- To search for the beginning of a track:
Press  or 
- To locate a desired passage:
Keep  or  Pressed.
Release the button until the start of desired passage.

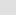
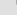


MODE KEY:



- REPEAT ONE:  "1" light on display and will repeat the track you selected
- REPEAT ALL:  "ALL" light on display and will repeat entire tracks
- INTRO: "INTRO" light on display and will play the first 10 seconds of each track
- SHUFF:  "SHUFF" light on display plays every tracks in shuffle order
- ANTI-SHOCK:  light on display until  press again then change to normal play
- DISC: If no DiSC, then "Disc" is display

PROGRAM:

1. Press PROGRAM KEY, Then "PROG 00" start flashing
2. Press skip/searched  or  key to search the track no.
3. When desired track is display, press PROGRAM key to register. Then track No. display to "00" again.
4. Repeat 2-3 (up to 20 tracks) after register 20 tracks. display shows the first registered track.
5. Registered tracks can be check by press PROGRAM key, And it can be changed by repeat 2-3.
6. Press play key, then PROG stops flashing and starts playing.
7. Open the door or power of to clean programming

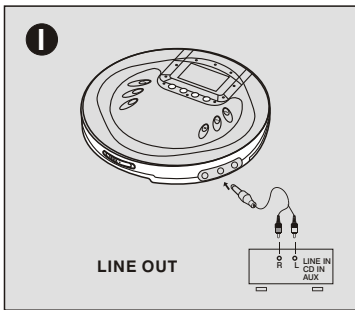
CONNECTION TO AN EXTERNAL UNIT ①

Use a commercially available connection cord which has a 3.5mm stereo plug at one end and two phono plugs at the other end. connect the stereo plug to the LINE OUT jack of the unit and connect the phono plugs to the analog input (AUX) terminals of the external unit.

NOTE

Turn off the power of both units before connection. DO NOT connect to the PHONES inputs of an amplifier (with a built-in phono equalizer amplifier)

Adjust the volume and BASSBOOST on this unit.



MAINTENANCE

To clean the lens ①

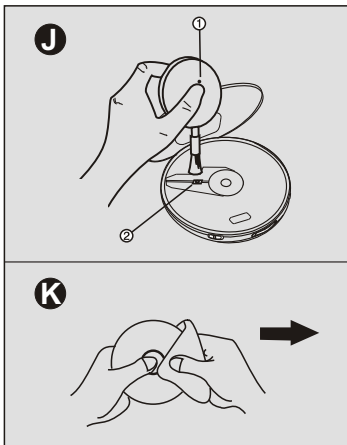
If the lens become dirty, the player will skip or not play. If this occurs, clean the lens in the following manner. To remove dust or dust particles, first use a camera lensblower/brush ① to blow a few timesto loosen particles, then gently brush the lens ② cleanfinish by blowing the lens again.

Note

Take care not to get too much solution on the swab. which could flow into the unit and cause damage. Pressing too strongly with the swab could scratch or break the lens.

To clean the discs K

Before playing, wipe the disc from the center out with a cleaning cloth. After playing, store the disc in its case.



SPECIFICATIONS

Tracking system	1-beam laser
Laser pickup	Semiconductor laser
D/A conversion	8-times oversampling digital filter +1- bit DAC
Frequency response	20-20,000Hz
Outputs	PHONES: stereo jack (3.5mm) [15mW+15mW, 32 ohms at 1 KHZ]
Input	DC 4.5V for external power from AC adaptor.
Power	DC 3V from Alkaline batteries (2 x AA or LR6): Not included. DC 2.4V from the rechargeable batteries: Not included.
Dimensions	Ø142(w) x 29(H) mm
Weight	280 grams (9.8 oz.) without batteries
Supplied accessory	Stereo earphone (1) AC adaptor (1) CD bag (1)

The specifications and external appearance of this unit are subjected to change without notice.

Rechargeable Battery Power

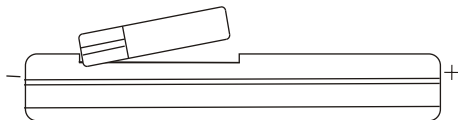
- 1 Insert one rechargeable battery into rechargeable battery sleeve as diagram shown so that negative polarity(-)position of battery is inserted into the rechargeable sleeve.
- 2 Open the battery compartment and insert 2x LR6 (AA) size rechargeable Ni-Cd or Ni-Mh batteries (not supplied) place rechargeable battery with sleeve included as shown in diagram (only one battery need with the sleeve, the sleeve must be at negative polarity(-), otherwise the battery can not be recharged).
- 3 Close the battery compartment.
- 4 plug one end of the supplied AC adapter into the DC4.5Vjack, then plug the other end of the AC power cord into a standard electrical outlet.
- 5 When charging is completed, disconnect the AC adapter plugs from the unit and the AC outlet.



BATTERY SLEEVE
(The gap must be on the upper side condition)



(SLEEVE)



(Back of CD player)

Notes for recharging batteries:

The battery is fully charged approximately 15 hours after the AC adapter is connected. More time may be required for charging in cold temperatures, but not more than 24 hours.

NOTE: AFTER 24 HOURS PLEASE UNPLUG THE AC ADAPTER.

With care rechargeable batteries can be recharged over 500 times.

If the operating time decreases drastically even when the rechargeable Ni-Cd or Ni-Mh battery is properly recharged, purchase a new rechargeable Ni-Cd or Ni-Mh battery.

Do not use any AC adapter other than one supplied with our product.

NOTE: ONLY NI-CD OR NI-MH BATTERIES CAN BE CHARGE IN THIS UNIT.

DO NOT CHARGE CONTINUOUSLY FOR 24 HOURS OR MORE, DOING SO CAN CAUSE THE PERFORMANCE OF THE RECHARGEABLE BATTERY TO DETERIORATE.

Instructions on environment protection



DENVER ELECTRONICS

Do not dispose of this product in the usual household garbage at the end of its lifecycle; hand it over at a collection point for the recycling of electrical and electronic appliances. The symbol on the product, the instructions for use or the packing will inform about the methods for disposal.

The materials are recyclable as mentioned in this marking. By recycling, material recycling or other forms of re-utilization of old appliances, you are making an important contribution to protect our environment.

Please inquire at the community administration for the authorized disposal location.

ALL RIGHTS RESERVED COPY
RIGHT DENVER ELECTRONICS A/S



www.denver-electronics.com

DENVER®

SUBJECT TO MODIFICATION WITHOUT NOTICE!