



BOSSystem™- EuroAlarm AP5

User Guide





Prepare AP5

1.



Insert 4 x AA rechargeable batteries in the battery pack..



2.



Back lid is put in place. Mount the 4 screws
Note tamper switch in the middle.
Now insert the SensorLine 12V power supply.
AP5 is now ready to be programmed with the master card.





Program/delete user cards

1.



Present master card as the first card, you will get a signal for confirmation.

The system is now ready to program user cards.

Present your first user card, you will get a signal for confirmation.

The system has now accepted the card.

To program more user cards, follow this routine starting always with presenting the master card.

The system accepts a max. of 30 user cards.



NB!

When de- or activating the AP5 alarm only use a user card.

The master card must only be used to program new user cards or to delete all cards!!!

2.



To delete all cards present the master card for approx. 10 sec. You will get a fast running signal.

All user cards are now deleted.

To re-program user cards, follow routine as described above.



Get started - power sensors

1.

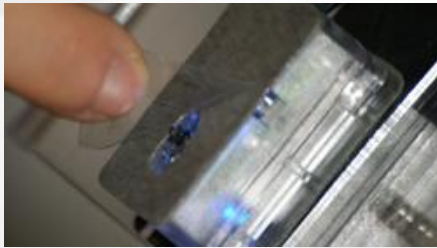


Make sure that AP5 is placed flat on surface.
Insert a sensor in one of the 5 ports from top of AP5.
NOTE use only sensors marked "2"!

You may now fit sensor on merchandise. Remember to clean surface thoroughly with an alcohol pad, AP1, before fitting.

The surface must be completely dry before sensor is fitted onto the displayed merchandise.

2.



Remove the adhesive pad cover and in case one is added also remove protector cap from the sensor.
NB! Only one adhesive pad must be fitted!

Fit sensor on the merchandise and you will get a short signal from the AP5.

The merchandise is now correctly installed and secured.

3.



To unsecure a merchandise simply present a user card.

You will then get fast running signals and can now safely remove any merchandise.



If alarm....

1.



...present a user card and you will get fast running signals.

Alarm is now deactivated

2.



To help identify root cause of alarm the sensor in question will no longer light.

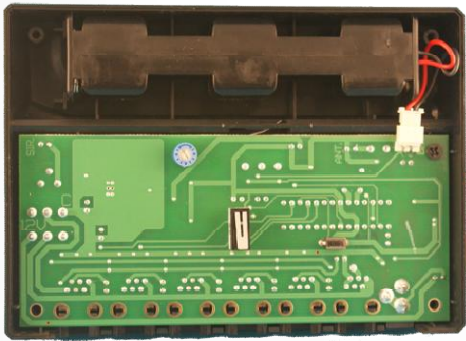
Put sensor back in place.
When correctly mounted the AP5 will give a short signal and sensor will light again.

Sensor is now active.



How to re-set AP5

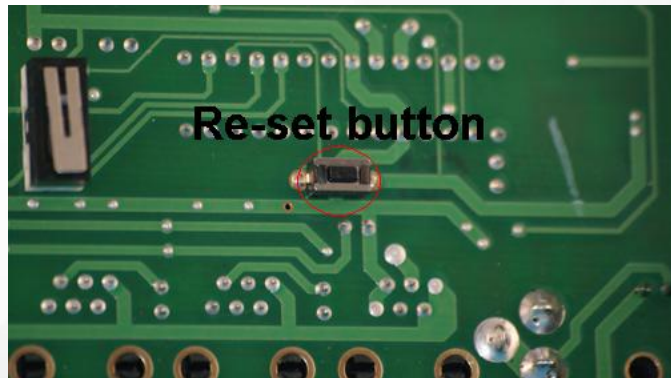
1.



Make sure the AP5 is placed flat on surface.
Remove batteries and add power. Then press down the re-set button.

You will get a running beep and the alarm has been re-set.

The memory is now empty and all cards have been deleted and must be re-programmed.



2.



Removed power and wait up to 30 sec. before re-connecting power.

You can start to program new user cards.



Contact

Danish Office

SensorLine ApS
Gøngehusvej 252
DK-2950 Vedbæk
Denmark

T.(+45) 4576 4848
F.(+45) 4576 4849
M. info@sensorline.eu
www.sensorline.eu

Swedish Office

SensorLine AB
Hönekullavägen 11
SE-435 44 Mölnlycke
Sweden

T.(+46) 31 338 4848
F.(+46) 31 338 4845
M. info@sensorline.se
www.sensorline.se

Norwegian Office

SensorLine AS
Fridtjof Nansens Vei 66A
NO-1472 Fjellhamar
Norway

T.(+47) 2107 5080
F.(+47) 9476 3810
M. info@sensorline.no
www.sensorline.no