

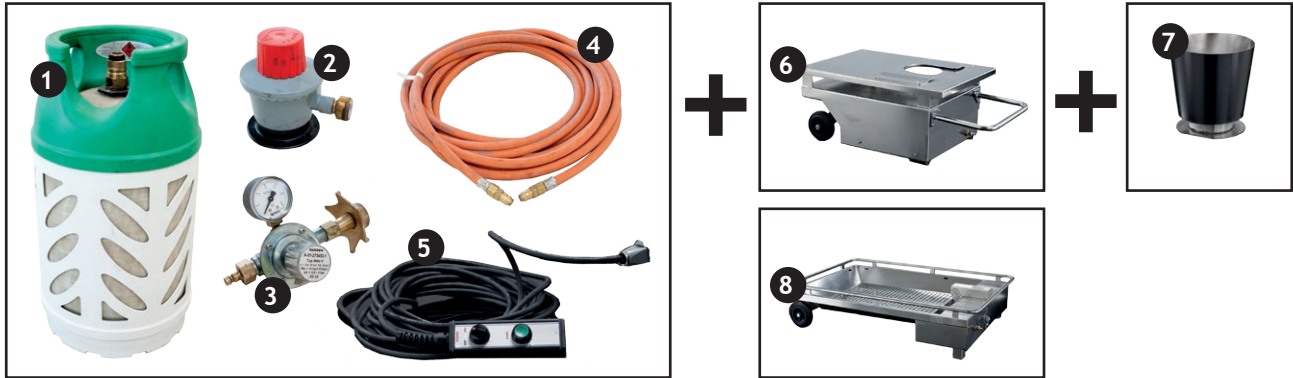
USER GUIDE

TO TRIFIRE'S FIRE CADDY AND TRIFIRE'S LIQUID BURNER



SAFETY INSTRUCTIONS

1. The equipment must only be operated by properly trained personnel or personnel approved by TRIFIRE.
2. The equipment must be kept in a secure location so unauthorised persons cannot use it.
3. The equipment may only be used for the fire training simulations described in the user guide.
4. The equipment must be shut off and the on/off switch on the remote control must be in the "OFF" position when working near the burner, for example when replacing mock-ups and cleaning the ignition tube.
5. The equipment must only be used outdoors.
6. All regulations for storing gas cylinders must be followed.



SETTING UP THE EQUIPMENT

1. Start by assembling the hose ④ and checking that the quick couplers are correctly attached to the regulator ② ③ (you should hear a click).
2. Attach the cable with the remote control using a 4-pole lock plug. ⑤ On TRIFIRE's fire caddy, ⑥ it is attached on the opposite side of the gas connection, under the burner. On TRIFIRE's liquid burner, ⑧ it is attached on the same side as the gas connection.
3. Set up the burner at a full hose length's ④ distance to the gas cylinder's ① regulator ② ③.
4. Make sure to place the gas cylinder and the operator downwind of the fire site.
▲ Important: The equipment must not be set up and used in winds of more than 7 metres per second.
5. Set up the equipment on a level surface.
▲ Important: The equipment must not be set up and used on a surface with an incline of more than 10 degrees.
6. Check whether the surface is flammable. The surface must be bare soil, newly mown grass, asphalt, flagstone, concrete, cement or similar, and ignition, smouldering or feeding the fire must be impossible.
7. Make sure that during the entire exercise the operator is located near the gas cylinder and is holding the remote control. The operator must not leave this position unless the gas has been shut off and the on/off switch is in the "OFF" position.
▲ Important: The gas must be shut off as soon as the fire has been extinguished.



REMOTE CONTROL
WITH ON/OFF SWITCH
AND START BUTTON

STARTING TRIFIRE'S LIQUID BURNER

1. Fill the vat with water until it begins to flow out of the overflow holes.
2. Attach the gas hose to the propane gas cylinder and turn the gas up to maximum 4 bar.
3. Ignite the burner by turning the on/off switch on the remote control to the "ON" position and pressing the "START" button.



TRIFIRE'S LIQUID BURNER

STARTING TRIFIRE'S FIRE CADDY

1. Attach the gas hose to the propane gas cylinder and turn the gas up to 0.1-3.5 bar, depending on the exercise.
▲ Important: The maximum for TRIFIRE's monitor, wastepaper basket and electrical cabinet mock-ups is 0.5 bar.
2. Ignite the burner by turning the on/off switch on the remote control to the "ON" position and pressing the "START" button.
▲ Important: The equipment must always be tested without a mock-up first.



TRIFIRE'S FIRE CADDY

USING TRIFIRE'S MOCK-UPS

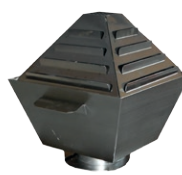
1. Turn off the burner by turning the on/off switch on the remote control to the "OFF" position when replacing mock-ups or otherwise working near the burner.
2. Do not touch the mock-ups while they are hot, and always use fire gloves.
3. Fight the fire with CO₂, water, powder or foam fire extinguishers.
▲ Remember always to approach the fire from underneath as flames and heat rise.



TRIFIRE'S
WASTEPAPER BASKET



TRIFIRE'S
MONITOR



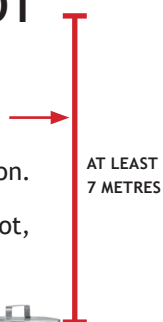
TRIFIRE'S
RUBBISH BIN



TRIFIRE'S
ELECTRICAL CABINET

TRIFIRE'S GREASE POT

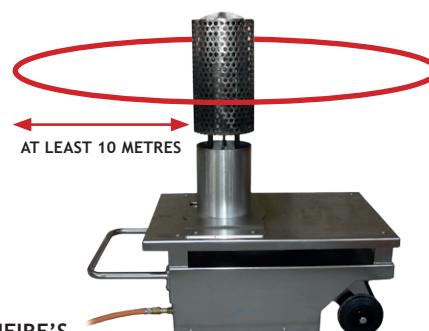
1. Watch out for the flash. It can be up to 7 metres high.
2. Take into account the wind direction.
3. Be careful with the oil when it is hot, and always use fire gloves.
4. Be aware of spontaneous ignition when removing the lid.



SETTING UP TRIFIRE'S
GREASE POT

TRIFIRE'S EXPLOSION CAGE

1. Keep a safety distance of at least 10 metres.
2. Always use hearing protection.



SETTING UP TRIFIRE'S
EXPLOSION CAGE

TURNING OFF AND HANDLING EQUIPMENT AFTER USE

1. Turn the on/off switch on the remote control to the "OFF" position.
2. Turn down the gas, and shut off the gas flow on the cylinder.
3. Do not touch the mock-ups while they are hot, and always use fire gloves.
4. Remove any remaining gas in the hose by pressing the "START" button once.
5. Remove the hose and then wipe it down and clean it, e.g. with a cloth.
6. Remove powder and foam residue with soap and water.
7. Wash the liquid burner with an alkaline cleaning agent and rinse with water. This will break the surface tension so that any powder or foam residue can run off.
8. Place the equipment up on its side to drain and dry off immediately after washing.
9. Let the burner cool until it is comfortable to touch before moving it.
10. Always recharge the burner after use. One charge gives approx. 200 ignitions. The battery is located in the burner, not in the remote control. Therefore the cable to the remote control must be attached to the burner during recharging and the on/off switch must be in the "OFF" position.
11. Remove the hose and the remote control when transporting the burner.
12. Contact the person responsible in your organisation and/or TRIFIRE if the equipment becomes damaged.

Important: If the battery is recharged every time it is used, it can last for many years - even with frequent use. Without regular recharging, the lifetime of the battery cannot be guaranteed.

FOR SUCCESSFUL FIRE TRAINING

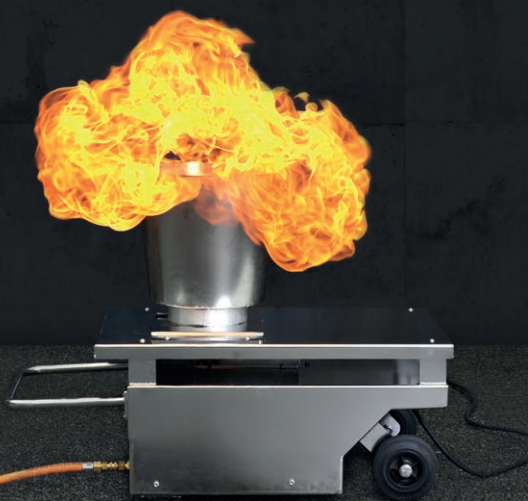
Want to know more?

Get more information at our website:

www.TRIFIRE.dk

please send a an e-mail:
info@TRIFIRE.dk.

Or give us a call
+45 9619 1019.



TRIFIRE

FOR SUCCESSFUL FIRE TRAINING