

# Trimble® CU

## User Guide



Version 03.00  
Part Number 57126002  
June 2005

## Contact Information

Trimble Navigation Limited  
Geomatics and Engineering Division  
5475 Kellenburger Road  
Dayton, Ohio 45424-1099  
USA  
800-538-7800 (toll free in USA)  
+1-937-245-5600 Phone  
+1-937-233-9004 Fax  
www.trimble.com

## Copyright and Trademarks

© 2004 - 2005, Trimble Navigation Limited. All rights reserved. Trimble, the Globe & Triangle logo, and BlueCap are trademarks of Trimble Navigation Limited, registered in the United States Patent and Trademark Office and other countries. Trimble Survey Controller and TSCe are trademarks of Trimble Navigation Limited. Recon is a trademark of Tripod Data Systems Inc., a wholly owned subsidiary of Trimble Navigation Limited. The Bluetooth word mark and logos are owned by the Bluetooth SIG, Inc. and any use of such marks by Trimble Navigation Limited is under license., Microsoft, ActiveSync, and Windows are either registered trademarks or trademarks of Microsoft Corporation in the United States and/or other countries. All other trademarks are the property of their respective owners.

## Release Notice

This is the June 2005 release of the *Trimble CU User Guide*, part number 57126002 version 03.00. It applies to the Trimble CU controller.

The following limited warranties give you specific legal rights. You may have others, which vary from state/jurisdiction to state/jurisdiction.

### Hardware Limited Warranty

Trimble Navigation Limited warrants that this hardware product (the "Product") will perform substantially in accordance with published specifications and be substantially free of defects in material and workmanship for a period of one (1) year starting from the date of delivery. The warranty set forth in this paragraph shall not apply to software products.

### Software License, Limited Warranty

This Trimble software product, whether provided as a stand-alone computer software product, built into hardware circuitry as firmware, embedded in flash memory, or stored on magnetic or other media, (the "Software") is licensed and not sold, and its use is governed by the terms of the relevant End User License Agreement ("EULA") included with the Software. In the absence of a separate EULA included with the Software providing different limited warranty terms, exclusions and limitations, the following terms and conditions shall apply. Trimble warrants that this Trimble Software product will substantially conform to Trimble's applicable published specifications for the Software for a period of one (1) year, starting from the date of delivery.

## Warranty Remedies

Trimble's sole liability and your exclusive remedy under the warranties set forth above shall be, at Trimble's option, to repair or replace any Product or Software that fails to conform to such warranty ("Nonconforming Product") or refund the purchase price paid by you for any such Nonconforming Product, upon your return of any Nonconforming Product to Trimble in accordance with Trimble's standard return material authorization procedures.

## Warranty Exclusions and Disclaimer

These warranties shall be applied only in the event and to the extent that (i) the Products and Software are properly and correctly installed, configured, interfaced, maintained, stored, and operated in accordance with Trimble's relevant operator's manual and specifications, and; (ii) the Products and Software are not modified or misused. The preceding warranties shall not apply to, and Trimble shall not be responsible for defects or performance problems resulting from (i) the combination or utilization of the Product or Software with hardware or software products, information, data, systems, interfaces or devices not made, supplied or specified by Trimble; (ii) the operation of the Product or Software under any specification other than, or in addition to, Trimble's standard specifications for its products; (iii) the unauthorized, installation, modification, or use of the Product or Software; (iv) damage caused by accident, lightning or other electrical discharge, fresh or salt water immersion or spray; or (v) normal wear and tear on consumable parts (e.g., batteries). Trimble does not warrant or guarantee the results obtained through the use of the Product.

THE WARRANTIES ABOVE STATE TRIMBLE'S ENTIRE LIABILITY, AND YOUR EXCLUSIVE REMEDIES, RELATING TO PERFORMANCE OF THE PRODUCTS AND SOFTWARE, EXCEPT AS OTHERWISE EXPRESSLY PROVIDED HEREIN, THE PRODUCTS, SOFTWARE, AND ACCOMPANYING DOCUMENTATION AND MATERIALS ARE PROVIDED "AS-IS" AND WITHOUT EXPRESS OR IMPLIED WARRANTY OF ANY KIND BY EITHER TRIMBLE NAVIGATION LIMITED OR ANYONE WHO HAS BEEN INVOLVED IN ITS CREATION, PRODUCTION, INSTALLATION, OR DISTRIBUTION INCLUDING, BUT NOT LIMITED TO, THE IMPLIED WARRANTIES OF MERCHANTABILITY AND FITNESS FOR A PARTICULAR PURPOSE, TITLE, AND NON-INFRINGEMENT. THE STATED EXPRESS WARRANTIES ARE IN LIEU OF ALL OBLIGATIONS OR LIABILITIES ON THE PART OF TRIMBLE ARISING OUT OF, OR IN CONNECTION WITH, ANY PRODUCTS OR SOFTWARE. SOME STATES AND JURISDICTIONS DO NOT ALLOW LIMITATIONS ON DURATION OR THE EXCLUSION OF AN IMPLIED WARRANTY, SO THE ABOVE LIMITATION MAY NOT APPLY TO YOU.

TRIMBLE NAVIGATION LIMITED IS NOT RESPONSIBLE FOR THE OPERATION OR FAILURE OF OPERATION OF GPS SATELLITES OR THE AVAILABILITY OF GPS SATELLITE SIGNALS.

## **Limitation of Liability**

TRIMBLE'S ENTIRE LIABILITY UNDER ANY PROVISION HEREIN SHALL BE LIMITED TO THE AMOUNT PAID BY YOU FOR THE PRODUCT OR SOFTWARE LICENSE. TO THE MAXIMUM EXTENT PERMITTED BY APPLICABLE LAW, IN NO EVENT SHALL TRIMBLE OR ITS SUPPLIERS BE LIABLE FOR ANY INDIRECT, SPECIAL, INCIDENTAL OR CONSEQUENTIAL DAMAGES WHATSOEVER UNDER ANY CIRCUMSTANCE OR LEGAL THEORY RELATING IN ANY WAY TO THE PRODUCTS, SOFTWARE AND ACCOMPANYING DOCUMENTATION AND MATERIALS, (INCLUDING, WITHOUT LIMITATION, DAMAGES FOR LOSS OF BUSINESS PROFITS, BUSINESS INTERRUPTION, LOSS OF BUSINESS INFORMATION, OR ANY OTHER PECUNIARY LOSS), REGARDLESS WHETHER TRIMBLE HAS BEEN ADVISED OF THE POSSIBILITY OF ANY SUCH LOSS AND REGARDLESS OF THE COURSE OF DEALING WHICH DEVELOPS OR HAS DEVELOPED BETWEEN YOU AND TRIMBLE. BECAUSE SOME STATES AND JURISDICTIONS DO NOT ALLOW THE EXCLUSION OR LIMITATION OF LIABILITY FOR CONSEQUENTIAL OR INCIDENTAL DAMAGES, THE ABOVE LIMITATION MAY NOT APPLY TO YOU.

NOTE: THE ABOVE LIMITED WARRANTY PROVISIONS MAY NOT APPLY TO PRODUCTS OR SOFTWARE PURCHASED IN THE EUROPEAN UNION. PLEASE CONTACT YOUR TRIMBLE DEALER FOR APPLICABLE WARRANTY INFORMATION.

## **Notices**

### **USA**

Class B Statement – Notice to Users. This equipment has been tested and found to comply with the limits for a Class B digital device, pursuant to Part 15 of the FCC rules. These limits are designed to provide reasonable protection against harmful interference in a residential installation. This equipment generates, uses, and can radiate radio frequency energy and, if not installed and used in accordance with the instructions, may cause harmful interference to radio communication. However, there is no guarantee that interference will not occur in a particular installation. If this equipment does cause harmful interference to radio or television reception, which can be determined by turning the equipment off and on, the user is encouraged to try to correct the interference by one or more of the following measures:

Reorient or relocate the receiving antenna.

Increase the separation between the equipment and the receiver.

Connect the equipment into an outlet on a circuit different from that to which the receiver is connected.

Consult the dealer or an experienced radio/TV technician for help.

Changes and modifications not expressly approved by the manufacturer or registrant of this equipment can void your authority to operate this equipment under Federal Communications Commission rules.

## **Canada**

This Class B digital apparatus complies with Canadian ICES-003.

Operation is subject to the following two conditions: (1) this device may not cause interference, and (2) this device must accept any interference, including interference that may cause undesired operation of the device.



---

# Important Information

## Environmental Information

### NOTICE FOR TRIMBLE'S EUROPEAN UNION CUSTOMERS

Trimble is pleased to announce a new recycling program for our European Union customers. At Trimble, we recognize the importance of minimizing the environmental impacts of our products. We endeavor to meet your needs, not only when you purchase and use our products, but also when you are ready to dispose of them. That is why Trimble is actively pursuing, and will continue to pursue, the expanded use of environmentally friendly materials in all its products, and why we have established a convenient and environmentally friendly recycling program.

As Trimble makes additional recycling facilities available for your use, we will post their locations and contact information to our Recycling Instructions web page.

For product recycling instructions and more information, please go to

[www.trimble.com/environment/summary.html](http://www.trimble.com/environment/summary.html)

Recycling in Europe:

To recycle Trimble WEEE,

Call +31 497 53 2430, and ask for the “WEEE Associate”

Or

Mail a request for recycling instructions to:

Trimble Europe BV

c/o Menlo Worldwide Logistics

Meerheide 45

5521 DZ Eersel, NL







## Declaration of Conformity

According to  
R&TTE Directive, 1999/5/EC, Annex IV  
including amendments by the CE marking Directive, 93/68/EEC

**Product:** Control Unit with accessories

Types / Models	Part Numbers
Trimble CU	58050001
Docking station	58252001
GPS holder	58317001
Power supply	78600007

**Manufacturer:** Trimble AB  
P.O. Box 64  
SE-182 11 Danderyd  
Sweden

**Technical references**

Article 3.1(a)	Health	1999/519/EC
Article 3.1(a)	El. Safety	EN 61010-1:2001
Article 3.1(b)	EMC	EN 301 489-17 V1.2.1
Article 3.2	Radio	ETS 300 328-2 V1.3.1

**Additional information**

The product complies with the essential requirements of the R&TTE Directive, 1999/5/EC, as shown in the Technical Construction File TCF/2004-11-29 certified by the Notified Body 0413, reference number 409587-1.



As manufacturer, we declare under our sole responsibility that the equipment follows the provisions of the Directive stated above.

Danderyd 2004-12-06

  
Peter Fredriksson, President

Trimble AB  
Box 64, Rinkshyttan 17

SE-182 11 Danderyd, Sweden

Telephone No: +46 8 622 1000  
Telefax: +46 8 753 2464

www.trimble.com

Org.No: S56550-9782  
VAT.No: SE56550978201





---

# Contents

<b>1</b>	<b>Introduction . . . . .</b>	<b>1</b>
	Welcome . . . . .	2
	Related Information . . . . .	2
	Technical Assistance . . . . .	2
	Your Comments . . . . .	2
	Registration . . . . .	2
<b>2</b>	<b>Unpacking and Inspection . . . . .</b>	<b>3</b>
	Inspection . . . . .	4
	What's in the box? . . . . .	4
<b>3</b>	<b>The Trimble CU . . . . .</b>	<b>5</b>
	Introduction . . . . .	6
	Attaching and Detaching the CU. . . . .	6
	The Trimble CU Keyboard . . . . .	8
	Control functions . . . . .	8
	Keyboard backlight . . . . .	9
	Entering Information. . . . .	9
	Entering text using the Input Panel . . . . .	9
	Entering text using the Trimble keyboard. . . . .	9
	Entering text using Microsoft Transcriber . . . . .	10
	Power Management . . . . .	10
	Trimble CU AC adaptor. . . . .	10
	AC adaptor safety . . . . .	10
	Suspend mode . . . . .	11
	Touch Screen . . . . .	12
	Calibrating the touch screen . . . . .	12
	Disabling the touch screen . . . . .	12
	Display light . . . . .	12
	Setting the time and date . . . . .	12
	Operating System . . . . .	13
	Radio Settings . . . . .	13
	Data Storage . . . . .	13
	Soft reset (warm boot) . . . . .	13
	Hard reset (cold boot) . . . . .	13
	Connecting the Trimble CU to an Office Computer . . . . .	14
	Transferring data or files using ActiveSync . . . . .	14
	Setting Up and Running ActiveSync . . . . .	15
	Disconnecting ActiveSync . . . . .	19
	Bluetooth Wireless Technology . . . . .	19
	Modifying your Bluetooth settings . . . . .	19

---

<b>4</b>	<b>Caring for the Trimble CU . . . . .</b>	<b>21</b>
	Maintenance . . . . .	.22

# Introduction

## In this chapter:

- Welcome
- Related Information
- Technical Assistance
- Your Comments
- Registration

## Welcome

This manual describes the features of the Trimble® CU and how to operate it. Even if you have previous experience of earlier Trimble control units, Trimble recommends that you spend some time reading this manual to learn about the special features of this product.

## Related Information

Sources of related information include the following:

- Help – the application software has built-in, context sensitive help that lets you quickly find the information you need. The Help is also available on the software CD.

## Technical Assistance

If you have a problem and cannot find the information you need in the product documentation, contact your local Distributor. Alternatively, do one of the following:

- Request technical support using the Trimble website at [www.trimble.com/support/support.htm](http://www.trimble.com/support/support.htm)
- Send an e-mail to [trimble\\_support@trimble.com](mailto:trimble_support@trimble.com).

## Your Comments

Your feedback about the supporting documentation helps us to improve it with each revision.

E-mail your comments to [ReaderFeedback@trimble.com](mailto:ReaderFeedback@trimble.com).

## Registration

To receive information regarding updates and new products please register on the Trimble web site.

[www.trimble.com/register](http://www.trimble.com/register)

# Unpacking and Inspection

## In this chapter:

- Inspection
- What's in the box?

## Inspection

Inspect the shipping container. If it is received in poor condition, examine the equipment for visible damage. If damage is found, immediately notify the carrier and the Trimble sales representative. Keep the container and packing material for the carrier's inspection.

Also make sure that all parts listed in the table below are included in the shipment.

### What's in the box?

The contents in the box might vary depending on what has been ordered. The table below is an example.

Part	Connection/Use
Trimble CU Controller	
Docking Station	For connecting the CU to office computer
Application Software CD	Software and User Guide
Docking Station Power Supply	Mains power to Docking Station, 12V 2A
Docking Station connection cable	6-pin Hirose/PC USB 2.5m
USB adapter cable	6-pin Hirose/USB 0.18m
Power cable	6-pin Hirose/Car cigarette lighter
Pack of 10 screen protectors	
Folding A4 card	Getting started, short form information
Compact Flash card	Compact Flash card 128Mb
Compact Flash card reader	Card reader for compact Flash card

# The Trimble CU

## In this chapter:

- Introduction
- Attaching/detaching the Trimble CU
- Trimble CU Keyboard
- Power Management
- Touch Screen
- Setting the Time and Date
- Operating System
- Data Storage
- Connecting your Trimble CU to an Office Computer
- Setting up and Running ActiveSync
- Bluetooth wireless technology

## Introduction

This chapter describes the Trimble® CU and its most common features.



Figure 3.1 The Trimble CU controller

## Attaching and Detaching the CU

The procedures for attaching/detaching the Trimble CU to a total station applies to the Docking Station, the Robotic Holder, and the GPS Holder.

To attach the CU:

1. Hook the top of the CU over the top of the panel attachment. Figure 3.2.

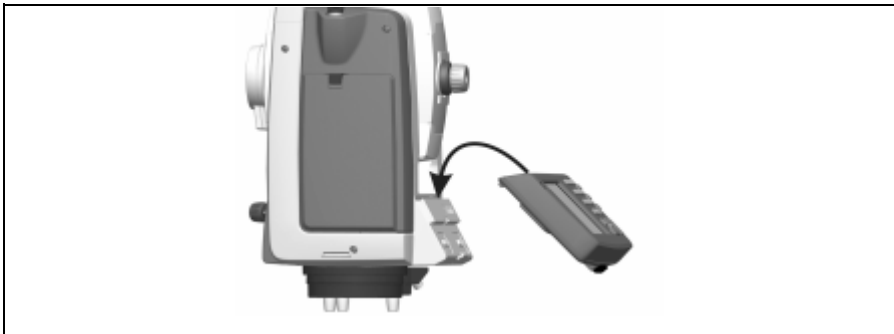


Figure 3.2 Attaching the CU

2. Push the CU toward the panel attachment until it locks into place with a click. Figure 3.3.





Figure 3.3 Locking the CU onto the panel holder

To detach the CU:

1. To turn off the power, press the green power button.
2. Push the lock release button at the bottom of the CU and then lift the bottom of the CU away from the instrument. Figure 3.4.

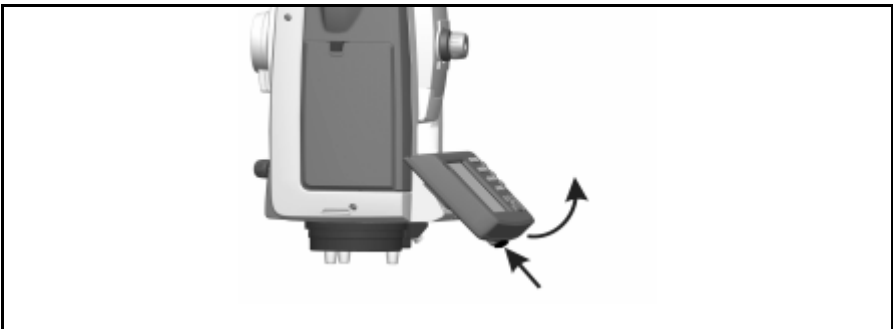


Figure 3.4 Unlocking the CU from the instrument

3. Unhook the top of the Trimble CU from the top edge of the panel attachment and remove it from the instrument. Figure 3.5.

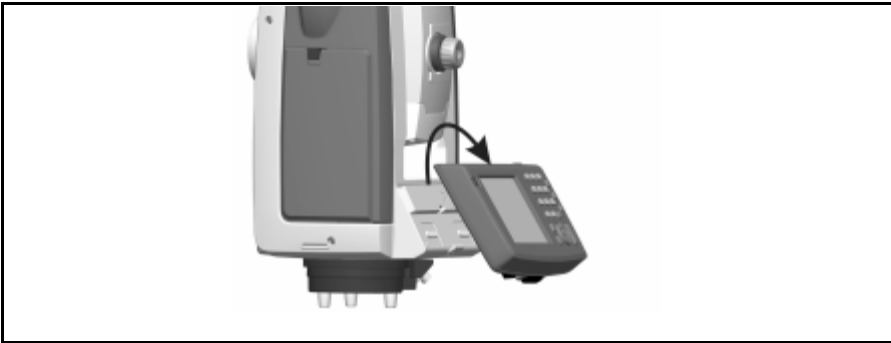


Figure 3.5 Removing the CU from the instrument

## The Trimble CU Keyboard

Data entry on the Trimble CU is similar to that of a cell phone. The “ $\alpha$ ” button scrolls between three different states of data entry: 123, ABC, and abc. Multiple presses on one key scroll through the letters on that key depending on which state you’re in.

The Trimble CU also offers the standard Microsoft® Windows® functions of cut (Ctrl+X), copy (Ctrl+C), and paste (Ctrl+V).

### Control functions

In addition to data entry and the standard Window functions, the Trimble CU has a number of control functions that are Trimble specific. These functions are described in the table below.

Table 3.1

Key	Control function
Ctrl + $\alpha$	Toggle the backlight on/off
Ctrl + Trimble	Disable the touch screen
Ctrl + 7	Toggle the touch screen keyboard on/off
Ctrl + Enter	Display help. Corresponds to F1 on a computer.
Ctrl + ESC	Pop up the the Widows taskbar
Ctrl + ,	Enter a “-” or a “+” symbol
Ctrl + t	Delete
Ctrl + 1 + 9	Perform a soft reset of the hardware
Ctrl + 3 + 9	Calibrate the touch screen

## Keyboard backlight

The trimble CU is equipped with a keyboard backlight. The Keyboard backlight must be activated before it can be used. When activated it toggles on/off together with the touch screen backlight. To activate the keyboard backlight:

1. Tap the Start menu and then select Settings/Control Panel/Keyboard.
2. Select Backlight and then select the Enable Keyboard Backlight check box.
3. Tap OK.

When activated it toggles on/off together with the touch screen backlight (Ctrl +  $\alpha$ ).

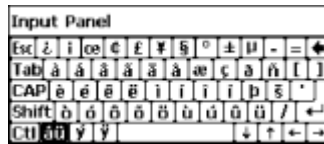
## Entering Information

### Entering text using the Input Panel

Tap once on the Input Panel icon that is located in the Windows taskbar. In the image below the icon is identified by a circle. Tap Keyboard to display the Input Panel.



The Input Panel allows you to input data as if you were typing on a physical keyboard. To change the keyboard to international symbols, tap the [áü] key, identified in the circle below. To access additional symbols, tap [Shift]:



### Entering text using the Trimble keyboard

Trimble has developed a keyboard similar to the Input Panel, but with larger keys. The Trimble keyboard is the default keyboard. To activate it, double-tap the Input Panel icon. Double-tap once again to close it.

*Note* – The keyboard last used will be the default keyboard whenever the Input Panel icon is double-tapped. To switch default keyboard, tap once on the Input Panel icon and select the desired keyboard.

#### Entering text using Microsoft Transcriber

Transcriber is a program that converts your handwritten notes to text in programs like Notepad. To start Transcriber, go to Start/Programs/Accessories/Transcriber. The Transcriber icon will show up in the taskbar at the bottom of the CU and the icon is identified by a circle in the image below:



To toggle Transcriber on and off, tap the Transcriber icon. You can also hold the stylus on the icon for a few seconds to bring up the Options menu. Close the Transcriber from within the Options menu.

Transcriber has a variety of tools and modes that allow you to customize the program. To get better acquainted with the tools, refer to the online help for Transcriber. To access the Help, go to Start/Help and select Transcriber from the Help table of contents.

## Power Management

The Trimble CU takes its power from an external power source, such as a total station, Robotic Holder, GPS Holder, or a docking station.

### Trimble CU AC adaptor

**International and US AC adaptor:** This unit is a wall mount unit that does not require an additional power cord. The adaptor is supplied with replaceable socket adaptors. Use the adaptor that match the plug and voltage requirement of your local area. When traveling to another country bring the adaptor for that country.

Rated Voltage: 100-240 / V AC 50-60 Hz / 700mA

#### AC adaptor safety

- Use only the AC adaptor intended for the Trimble CU.
- Using another AC adaptor can damage your product and may void your warranty.
- AC adaptors are designed for “INDOOR USE ONLY”. Avoid using the AC adaptor in wet outdoor areas.
- Unplug the AC adaptor from power when not in use.
- Do not short the output connector.
- Do not attempt to repair a defective unit. There are no repairable parts inside the unit.

---

## Suspend mode

The Trimble CU is equipped with an internal support battery that enables you to remove the controller from one power source and attach it to another within a period of 10 - 300 minutes if you put it in suspend mode before you turn it off. You can then resume working from the same place in the software that you were before you entered suspend mode.

**To enter suspend mode**, press the power button.

The CU will go into suspend for 120 minutes by default.

**To resume**, press the power button.

The internal support battery is charged when the Trimble CU is connected to external power.

*Note – It is important that you press the power button before you remove the CU from its power source. Otherwise the controller has to reboot when it restarts.*

If the Trimble CU has not been connected to external power when the suspend period has elapsed, the control unit powers down and has to reboot when started again and any unsaved data will be lost

If the internal battery runs low on power the Trimble CU powers down sooner. Fully charged and under normal conditions, the internal battery should have capacity for five suspend sequences.

*Note – Trimble does not guarantee that the actual suspend time will always be 300 minutes. The actual time will depend on the aging and wear of the battery. The operating temperature will also affect the suspend time.*



**Warning** – Do not attempt to replace the internal support battery on your own, or you may seriously damage the controller. For battery replacement, contact your local dealer.

---

## Touch Screen

The Trimble CU LCD screen can be viewed easily both in direct sunlight and in overcast conditions. It also incorporates a touch interface for navigation. Tap elements on the screen with a stylus or your finger.

### Calibrating the touch screen

If the touch screen does not respond properly when you tap it, recalibrate it as follows:

1. Tap the Start menu and select Settings/Control Panel/Stylus.  
The Stylus Properties appears.
2. To recalibrate, tap Recalibrate in the Calibration tab.
3. Follow the prompts on the screen.

### Disabling the touch screen

To clean the touch screen during a survey, press [Ctrl] + [Trimble] to disable it. To enable the touch screen again, press [Ctrl] + [Trimble].

### Display light

The display light is active by default and can be toggled on/off by pressing Ctrl +  $\alpha$ . To change the default display light settings:

1. Tap the Start menu and then select Settings/ Control Panel/ Display.
2. Select Display light and then make your changes.
3. Tap OK.

## Setting the time and date

1. Tap the Start menu and then select Settings/Control Panel/Date/Time.  
The Date/Time properties dialogue appears.
2. Change the date and time as required.
3. To accept the new settings, tap OK. To cancel, tap ESC.

*Note – when you attach the Trimble CU to a GPS receiver or to your computer using Microsoft ActiveSync® technology, time and date are automatically updated.*

---

# Operating System

The Trimble CU runs the Windows CE .Net operating system.

## Radio Settings

When using a Trimble CU with a Trimble S Series or Trimble SPS700 Total Station, you can configure the radio settings for the robotic holder from the operating system control panel. To set the radio channels in the holder go to Start / Settings / Control Panel / Radio Settings.

## Data Storage

The Trimble CU has two kinds of memory:

- 64 MB RAM

RAM is volatile, and you risk losing data if the power fails.

- 256 MB NAND flash storage memory.

The NAND flash storage memory is non-volatile, and protects valuable data and software against memory loss.

To ensure the integrity of important data and software files, Trimble recommends that you load and save these on your flash disc rather than in RAM.

If required, you can restart the CU in one of the following ways.

### Soft reset (warm boot)

This keeps the RAM intact, but stops all running software. To perform a soft reset:

1. Tap the start menu and then select Programs/Utilities/Reset.
2. Select Soft Reset.
3. Tap OK.

### Hard reset (cold boot)

A hard reset erases the RAM. To perform a hard reset:

Hold down the On/Off button for 20 seconds.

Or

1. Tap the start menu and then select Programs/Utilities/Reset.
2. Select Hard Reset.
3. Tap OK.

The Trimble CU backs up the data in RAM onto the System Folder on the flash disk. Any data stored in this way can be found under /Disk/System.

## Connecting the Trimble CU to an Office Computer

Use the docking station to connect the Trimble CU to an office computer:

1. Attach the CU to the docking station.
2. Connect the docking station power supply to power the CU. Figure 3.6
3. Use the docking station connection cable to connect the CU to the computer through the docking station comm port and the computer USB port.

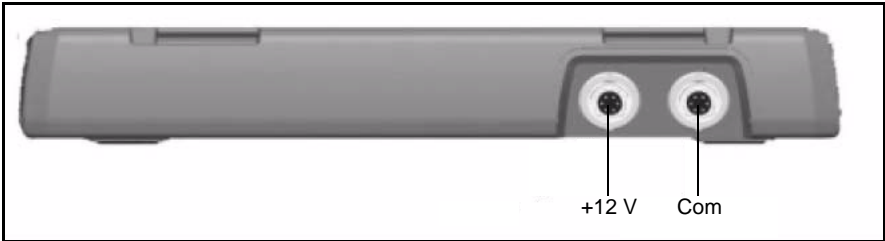


Figure 3.6 Docking Station +12 V power and com ports

### Transferring data or files using ActiveSync

Microsoft ActiveSync provides a way for devices such as the Trimble CU to communicate with desktop computers and laptops that run on Windows operating systems. ActiveSync is already integrated into the operating system on the Trimble CU. However, you must install ActiveSync on the computer or laptop. You can install the software from the CD that was shipped with the CU or you can download the current version of Active Sync from:

<http://www.microsoft.com/mobile/pocketpc/downloads/>

There are two types of ActiveSync connections. The table below summarizes the advantages and disadvantages of each choice.

	Advantages	Disadvantages
Guest	Fewer questions to answer on initial connection	Slower subsequent connections (one more steps per connection that requests partnership)
	Safer because synchronization cannot adversely impact data either on the CU or the computer.	
	For use on borrowed or shared computers	



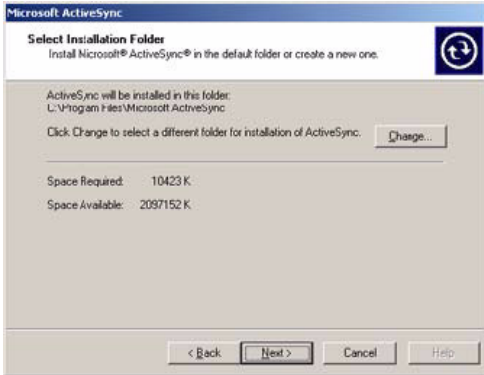
	Advantages	Disadvantages
Partnership	Fast subsequent connections (one fewer step per connection)	More questions to answer on initial connection
	The clock on the CU is set to match the computer clock	Synchronization not supported on the Trimble Recon® handheld
		If the clock on the computer is wrong, it will make the clock on the CU wrong
		Partnership is deleted when the CU is hard reset.

## Setting Up and Running ActiveSync

1. Connect the Trimble CU to the office computer using the USB cable.
2. Install ActiveSync on the computer. The following dialog appears:



3. Click Next. The following dialog appears. Trimble recommends that you use the default setting:



4. Click Next.
5. If necessary, reboot the computer. Once the software is installed, the following dialog appears:



6. Click Next.

7. In the dialog that appears select whether to set up as a partnership or a guest and then click Next:

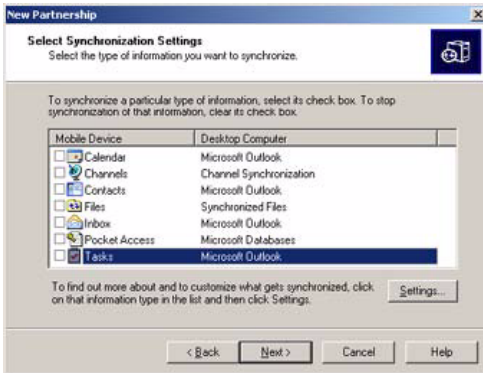


If you select No, you are set up as a guest and the Select Number of Partnerships dialog does not appear. Go to Step 9. If you select Yes, select a synchronization setting from the following dialog:

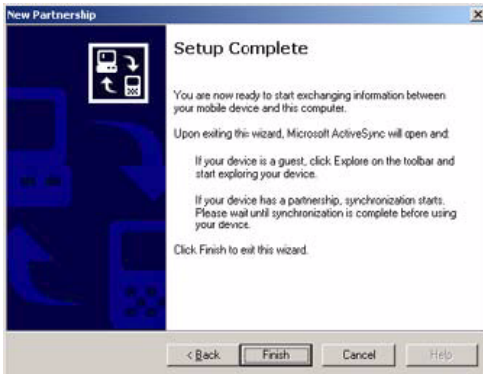


8. Click Next to continue.

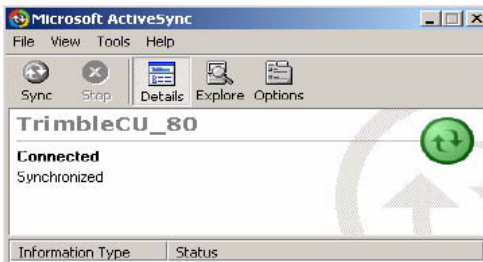
9. In the dialog that appears, Trimble recommends that you clear all the check boxes.



10. Click Next. Click Finish in the Setup Complete dialog:



ActiveSync opens:



11. To view files on the Trimble CU, click the Explore icon. The file structure looks and functions the same as Windows Explorer on the office computer.

## Disconnecting ActiveSync

To avoid disconnection problems, disconnect ActiveSync on the CU before removing the cable from either the computer or the CU.

1. Double-tap the connection icon in the task bar at the bottom of the screen:



2. Tap disconnect and then remove the cable:



For more information about ActiveSync, refer to the help or visit the Microsoft website.

## Bluetooth Wireless Technology

The Trimble CU is equipped with Bluetooth® wireless technology. The function is enabled by default and makes wireless communication with most other devices that have Bluetooth wireless technology possible. Uses for Bluetooth wireless technology include:

- File transfer application in the Start menu to transfer data to and from other Trimble data collectors, including the Trimble ACU and the TSCe™ controller (with BlueCap®).
- Browse and transfer files to and from your Trimble CU.
- Connect to the Internet through a cellphone equipped with Bluetooth wireless technology.

## Modifying your Bluetooth settings

To modify your Bluetooth settings:

1. Tap the Start Menu and then select Settings/Control Panel/Bluetooth Device Properties.
2. Make your changes.
3. Tap OK.



# Caring for the Trimble CU

## In this chapter:

- Operating temperature
- Storage temperature
- Shock
- Environment
- Cleaning the case
- Care of the touch screen
- Applying a screen protector

## Maintenance

Trimble recommends the following to maintain the Trimble CU during everyday use, and to prevent potential physical damage and data loss.

Operating temperature	-30° C to + 55° C.
Storage temperature	-40° C to + 70° C.
Shock	The Trimble CU is designed and tested to withstand a drop from a height of 1 meter onto plastic carpet on a concrete floor.
Environment	The Trimble CU has been tested to meet the requirements of IP55 and EN 60529:1991 IP55, for water and dust. This means that the unit can be cleaned under running water and that dust will not affect its performance.
Cleaning the case	Clean the controller with a soft cloth dampened with clean water or with water containing a mild detergent. If the keyboard has dirt or grime on it, use compressed air, a vacuum cleaner, or rinse under clean water.
Care of the touch screen	Clean the screen with a soft cloth dampened with clean water or glass cleaner. Do not apply any cleaner directly on the screen. Apply the cleaner to the cloth and gently wipe the screen. <b>Note – Do not use abrasive cleaners.</b>
Applying a screen protector	Use a screen protector to help keep the screen clean and protected. Clean the screen thoroughly and leave it slightly wet. Peel the backing from the screen protector and then apply the protector to the screen. Use a soft cloth to squeeze the excess water from under the screen protector.