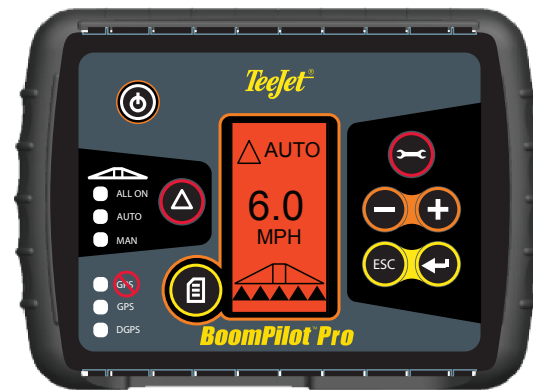




1801 Business Park Drive
Springfield, Illinois 62703 USA

Tel (217) 753-8424
Fax (217) 753-8426
www.teejet.com

OPERATIONS MODE

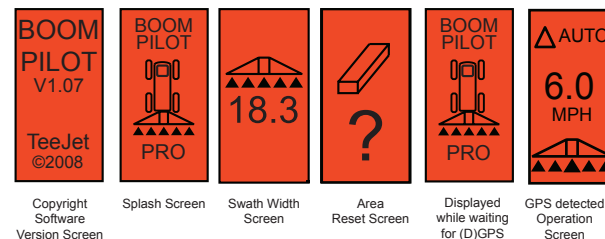


POWER UP SEQUENCE

Before starting the BoomPilot Pro, make sure the spray controller is powered up and the Master Switch is set to the "Off" position.

At power up, the BoomPilot Pro will perform the following steps:

- Display copyright and version screen for three (3) seconds.
- Display splash screen for two (2) seconds.
- Detect if GPS data are present (this occurs simultaneously within the display screen sequence).
- Display the current swath width for three (3) seconds.
- The Area Reset screen will be displayed.
- The splash screen will be displayed until the (D)GPS LED is illuminated or until Setup mode is entered. Once (D)GPS is locked, the Operation screen will be displayed.



AREA RESET

During the BoomPilot Pro power up sequence, the Area Reset screen will be displayed:



Area Reset retains existing applied area data. This option allows applied area to be reset for a new field or continue with an existing field. To reset the Area, press the Enter key. If the previous application is being resumed, press the Escape key to continue to Operation or Setup mode. This screen is only available upon BoomPilot Pro power up. It cannot be accessed during normal operation.



All of the boom sections are "On". The Swath Status Change key must be held down continuously to be in "All On" Mode.



The boom sections switch "On" and "Off" automatically



The boom sections are controlled on a manual basis.



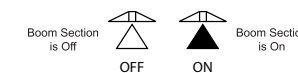
No GPS Signal is detected



GPS is detected



DGPS is detected



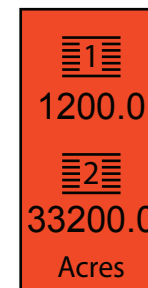
While moving forward, enter "All On" by pressing and holding the Swath Status Change key. Release the key to return to Manual or Auto modes.

ALL ON/AUTO/MANUAL MODES



The BoomPilot Pro will display the current boom section status. The top of the screen displays the swath mode status (either All On, Auto, or Manual). The corresponding LED will be illuminated. To change modes, press the Swath Status Change key. The Boom Section Status will be displayed on the lower portion of the screen. A filled in triangle depicts a section that is "On"; an empty triangle depicts a section that is "Off". The Vehicle Speed will be displayed in the middle portion of the screen. Refer to the illustrations at the bottom of this page for additional information.

AREA COUNTER SCREEN



Area Counter 1 may be used to display the accumulated total of applied area (in acres/hectares) of the current field. Area Counter 2 may be used to display the accumulated total of all fields. These fields are user-defined and may be used to meet the specific needs of the operator.

Press the Change Page key to access the Area Counter screen. The screen will display two user-defined counters. The areas can be reset during operation. To reset an existing area counter, while on the Applied Area Screen, press the Enter key once to highlight Applied Area 1. Press and hold the Minus key for approximately 3 seconds to reset the total in Applied Area 1. If the area counter was reset by mistake, press the Plus key to restore the existing setting. Highlight Applied Area 2 by pressing the Enter key. Repeat the process for Area 2 as required.

NOTE: Once the Area Counter screen is exited, the area reset will become permanent. The restore feature cannot be used after the screen has been exited.

To exit the Area Counter screen, press the Change Page key. The BoomPilot Pro will advance to the Operation screen.

BoomPilot Pro

Automatic Boom Section Control with Internal GPS

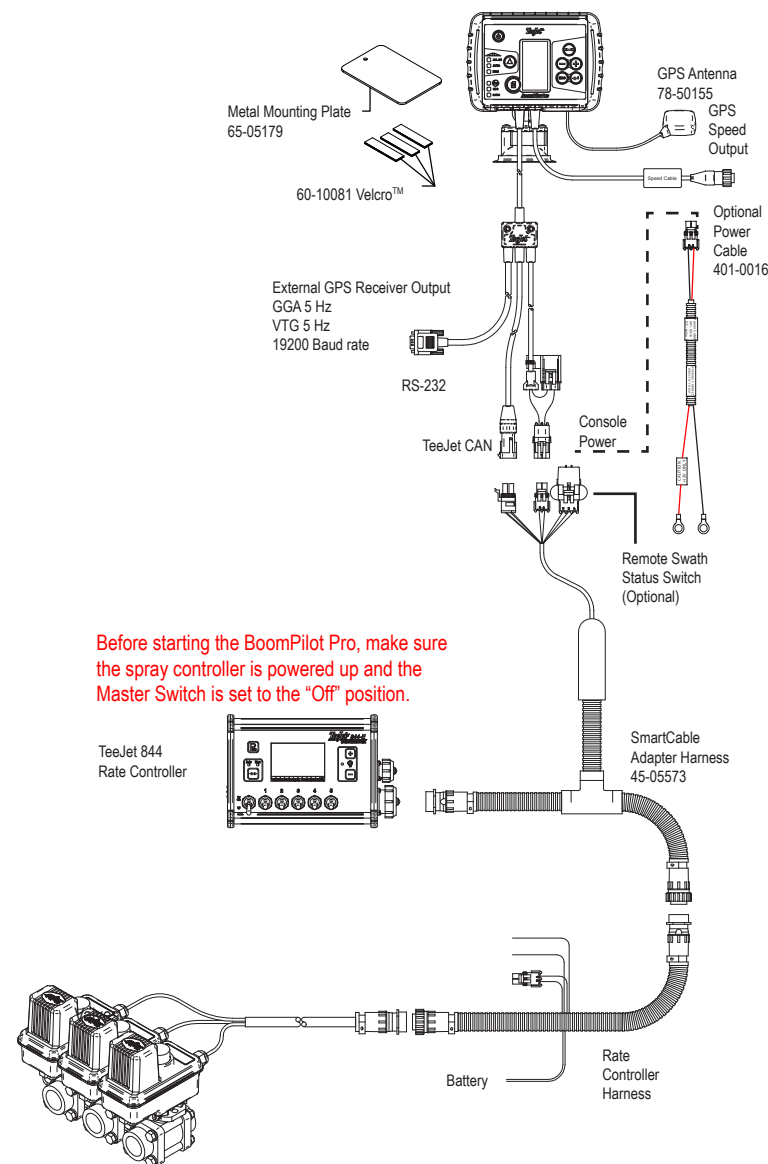


BoomPilot® Pro

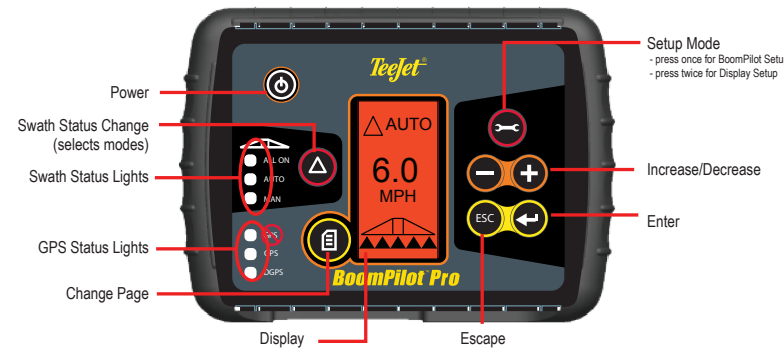


The BoomPilot® Pro is an automatic boom section control device that features 6 sections of control (up to 15 sections optional). Overlap is minimized and applicator fatigue is greatly reduced.

SMARTCABLE II - The SmartCable is the link between the existing rate controller, the boom valves, and the BoomPilot Pro. It allows the BoomPilot Pro to automatically control the boom section valves.



SETUP MODES



SYSTEM SETUP MODE

Press the Setup Mode key to enter into BoomPilot Pro Setup Mode.

SETUP SCREEN



This is the initial BoomPilot Pro Setup screen. Press the Enter key to advance to the Delay On setting. Setup screens will time out after 10 seconds of inactivity (changes will be saved). After time out, the screen will go back to Operation Mode. Press the Escape key to exit from Setup Mode without saving any changes.

Setup screens are numbered sequentially for ease of operation.

DELAY ON



Delay On functions as a "look ahead" for timing the boom section valves to switch on exactly when entering an area that has not been applied. Delay On time is established in seconds and tenths of seconds. If the boom turns on too soon when entering an un-applied area, decrease the Delay On setting. If the boom turns on too late when entering an un-applied area, increase the Delay On setting. Use the Plus and Minus keys to adjust the value. The Delay On Time range is 0.0 - 10.0 seconds. Press the Enter key to accept the changes and advance to the Delay Off setting.

DELAY OFF

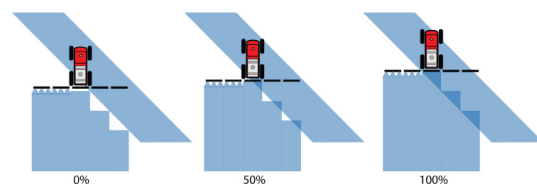


Delay Off functions as a "look ahead" for timing the boom section valves to turn off exactly when entering an area that has been applied. If the boom turns off too soon when entering an applied area, decrease the Delay Off setting. If the boom turns off too late when entering an applied area, increase the Delay Off setting. The delay time is established in seconds and tenths of seconds. Use the Plus and Minus keys to adjust the value. The Delay Off Time range is 0.0 - 10.0 seconds. Press the Enter key to accept the changes and advance to the Overlap setting.

OVERLAP



Overlap determines the amount of overlap that is allowed when the boom sections are turned on and off. Select the percent of overlap from three pre-determined settings (0%, 50%, and 100%) using the Plus and Minus keys. Press the Enter key to accept the changes and advance to the Number of Boom Sections setting.



NUMBER OF BOOM SECTIONS



The number of available boom sections is 1 to 6 or 1 to 15 depending upon which SmartCable is detected. Enter the number of boom sections that are active in the system (1 to 15 sections). Use the Plus and Minus keys to adjust the value. Press the Enter key to accept the changes and advance to the Boom Section Widths setting.

BOOM SECTION WIDTHS



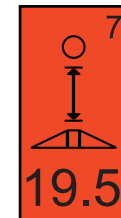
Enter the width for EACH boom section in inches (cm). Use the Plus and Minus keys to adjust the value. Press the Enter key to advance to the next Boom Section Width setting. When facing forward, the boom sections are ordered from left to right along the boom. The boom section width range is 0 to 1969 inches (0 cm to 50 m). The minimum recommended width is 39 inches (1 m). Press the Enter key to accept the changes to the last boom section and advance to the Boom Offset Direction setting. Individual boom section widths can be set to different widths.

BOOM OFFSET DIRECTION



A BACKWARD selection (as shown) indicates the boom is located behind the GPS antenna as the vehicle moves in a forward direction. A FORWARD selection indicates the boom is located in front of the GPS antenna as the vehicle moves in a forward direction. Use the Plus and Minus keys to adjust between Forward or Backward. Press the Enter key to accept the changes and advance to the Boom Offset Distance setting.

BOOM OFFSET DISTANCE



Define the distance from the GPS antenna to the boom in decimal feet (decimal meters). The boom offset distance range is 0 to 164 decimal feet (0 to 50 decimal meters). In the example shown, 19.5 feet equals 19 feet 6 inches. Use the Plus and Minus keys to change the value. Press the Enter key to accept the changes.

Once the final setting has been entered and saved, the screen will return to the initial BoomPilot Pro Setup screen. If no additional changes are required, press the Escape key and exit to Operation Mode.

DISPLAY SETUP MODE

Press the Setup Mode key until the initial Display Setup Mode screen appears. To return to the BoomPilot Pro Setup Mode, press the Setup Mode key again.

DISPLAY SETUP SCREEN



This is the initial Display Setup screen. Setup screens will time out after 10 seconds of inactivity (changes will be saved.) After time out, the screen will go back to Operation Mode. Pressing the Escape key will also exit the user from Setup Mode without saving any changes. Press the Enter key to advance to the Display Brightness setting.

DISPLAY BRIGHTNESS



The Plus and Minus keys can be used to change the brightness levels of the display screen. Press the keys until the desired brightness is established. Press the Enter key to advance to the Display Contrast setting.

DISPLAY CONTRAST



The Plus and Minus keys can be used to change the contrast levels of the display's background. Press the Enter key to advance to the Display Background setting.

NOTE: The Plus and Minus keys control console brightness levels during Operations Mode. However, if GPS signal is not received, the Plus and Minus keys will control the contrast level.

DISPLAY BACKGROUND



The Plus and Minus keys toggle between light and dark backgrounds. Press the keys until the desired background is established. Press the Enter key to accept the changes and advance to COM Port Setup.

COM PORT SETUP



The COM Port can be customized to send GPS data out or accept external GPS. "0" means the console is accepting external GPS data. "1" means the console is using internal GPS and is transmitting out. Use the Plus and Minus keys to toggle the COM Port number. Press the Enter key to accept the changes and advance to GPS Setup.

Power must be cycled to the console if this setting is changed.

GPS SETUP



GPS Setup can be customized to accept "ANY" available source transmission (either uncorrected or differential), "GPS" source transmissions (only uncorrected signals), or "DGPS" source transmissions (only differentially corrected signals). Use the Plus key to select "ANY," "GPS," or "DGPS" and the Minus key to revert backward. Press the Enter key to accept the changes.

Power must be cycled to the console if this setting is changed.

Once the final setting has been entered, the screen will return to the initial Display Setup Mode screen. If no additional changes are required, press the Escape key and exit to Operation Mode or press the Setup Mode key again to enter into BoomPilot Pro Setup Mode.