

User Manual

IMPORTANT

READ ALL INSTRUCTIONS AND OPERATIONS BEFORE OPERATING THIS UNIT. FOLLOW THE CORRECT LIGHTING AND USAGE PROCEDURES. HANDLE METAL PARTS WITH CARE TO AVOID INJURIES. FOLLOW ALL STEPS IN ORDER. NEVER ALLOW CHILDREN TO OPERATE THIS UNIT.

WARNING AND SAFETY PRECAUTIONS

1. THIS GRILL IS FOR OUTDOOR USE ONLY.
2. TURN OFF GAS SUPPLY AT THE GAS BOTTLE AFTER USE.
3. PLEASE FOLLOW ALL ASSEMBLY INSTRUCTIONS IN THIS MANUAL; IF INSTRUCTIONS ARE NOT FOLLOWED IT MAY CAUSE PROBLEMS IN USE.
4. THIS BARBECUE WILL BECOME VERY HOT WHEN BEING USED, CARE IS TO BE TAKEN ESPECIALLY WHEN PETS, CHILDREN OR ELDERLY PEOPLE ARE PRESENT.
5. IN THE EVENT OF A GAS LEAK SHUT OFF GAS TO THE BARBECUE, EXTINGUISH ANY OPEN FLAMES, OPEN LID AND IF LEAK CONTINUES CHECK FOR DAMAGES, POOR CONNECTIONS ETC. CONTACT YOUR LOCAL GAS DEALER IMMEDIATELY IF THE PROBLEM CANNOT BE SOLVED.
6. DO NOT ATTEMPT TO MOVE BARBECUE WHILE IT IS IN OPERATION.
7. DO NOT USE OR STORE ANY FLAMMABLE LIQUIDS OR VAPOURS IN THE VICINITY WHEN OPERATING THE BARBECUE.
8. DO NOT USE A NAKED FLAME TO CHECK FOR GAS LEAKS.
9. DO NOT OPERATE BARBECUE IF THERE IS A GAS LEAK.
10. DO NOT ATTEMPT TO DISCONNECT ANY GAS FITTING PART IF YOUR BARBECUE IS BEING USED, ON THE BARBECUE OR THE GAS REGULATOR / BOTTLE.
11. CARE IS ADVISED WHEN OPERATING YOUR BARBECUE, YOU SHOULD NEVER LEAVE UNATTENDED WHEN IN USE.
12. THE BARBECUE SHOULD BE CLEANED ON A REGULAR BASIS. TAKE CARE NOT TO ENLARGE BURNER PORTS OR ORIFICE OPENINGS WHEN CLEANING THE BURNER OR VALVES.
13. DO NOT ATTEMPT TO USE THIS APPLIANCE IN A GARAGE OR ANY ENCLOSED AREA. ALSO ENSURE TO KEEP CLEAR OF ANY COMBUSTIBLE MATERIALS, ETC. WE RECOMMEND TO KEEP A DISTANCE OF AT LEAST 0.5 TO 1.0 METRE CLEAR OF ANY COMBUSTIBLE MATERIALS.
14. WE WOULD RECOMMEND THAT THIS BARBECUE BE SERVICED BY YOUR LOCAL GAS RETAIL OUTLET AT LEAST ONCE A YEAR BY A COMPETENT ENGINEER. DO NOT ATTEMPT TO SERVICE THIS APPLIANCE YOURSELF.
15. DO NOT ATTEMPT ANY UNAUTHORISED INTERFERENCE OF THE MAIN CONTROLS ON THIS BARBECUE, I.E. GAS TAPS, INJECTORS AND VALVES ETC.
16. ALWAYS TEST GAS LINE FOR LEAKS AT CONNECTOR WITH SOAPY WATER AFTER MAKING CONNECTIONS.
17. THE TOP MUST ALWAYS BE OPEN WHEN LIGHTING THE BURNER.
18. USE OVEN GLOVES AND STURDY, LONG HANDLED BARBECUE TOOLS WHEN COOKING ON THE GRILL.
19. BE PREPARED IF AN ACCIDENT OR FIRE SHOULD OCCUR. KNOW WHERE THE FIRST AID KIT AND FIRE EXTINGUISHERS ARE AND KNOW HOW TO USE THEM.
20. KEEP ANY ELECTRICAL SUPPLY CORD AND THE FUEL SUPPLY HOSE AWAY FROM ANY HEATED

SURFACES.

Technical data

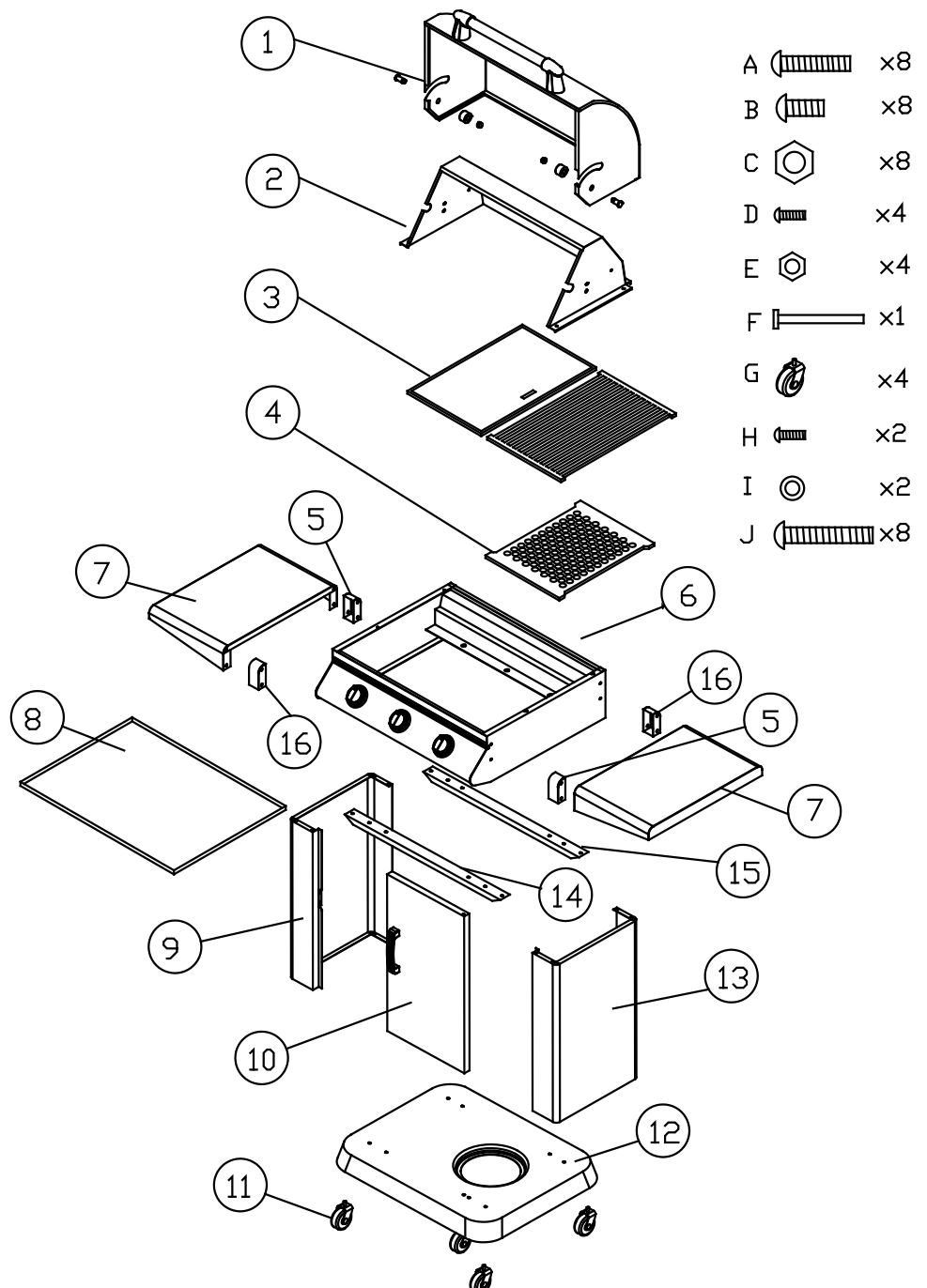
Appliance name	: Barbecue Gas Grill
Model	: JH3-LBH
Consumption	: 786 g/h
Power	: Approx. 10.8 kW
Gas type	: LP Butane / Propane 28/37mbar
Overall dimension	: W 1373 x D 575 x H 1165 mm
Weight	: Approx. 54 kg

This appliance has been made with regard to the European Gas Standard EN498 and bears the CE certification.

The gas hose assembly that is enclosed with this appliance conforms to British Standard BS 3212.2.

Illustrated parts list

1. Front shell on the front cover × 1
2. Back shell on the front cover × 1
3. Cooking Grill × 2
4. Minute fire board × 1
5. Left heat insulation support × 2
6. Hearth × 1
7. Side Steel Shelf × 2
8. Drip Pan × 1
9. Left Support × 1
10. Door × 1
11. Wheel × 4
12. Bottom Steel Shelf × 1
13. Right Support × 1
14. Front Transom × 1
15. Back Transom × 1
16. Right heat insulation support × 2



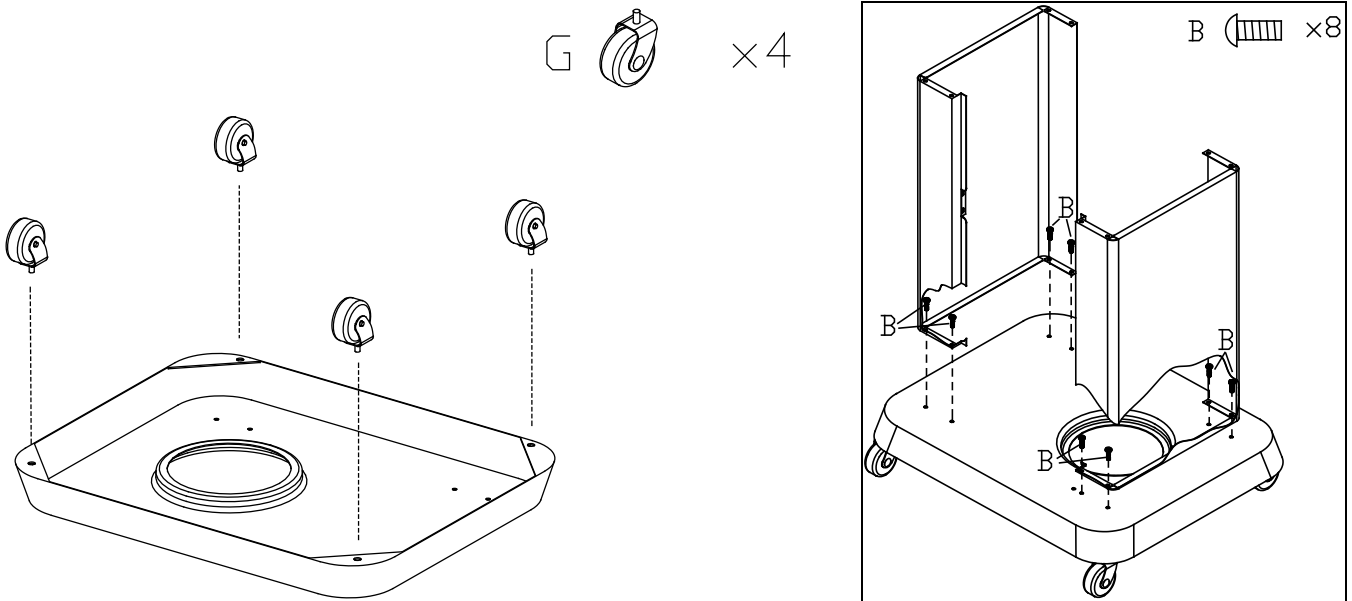
Assembly instructions

Before beginning assembly, necessary tools for assembly of your grill include: screwdriver, pliers and adjustable wrench.

Step 1 Prepare parts: bottom steel shelf 、 wheel 、 left and right support。

Install the Wheels and the left and right support in the Bottom Steel Shelf.

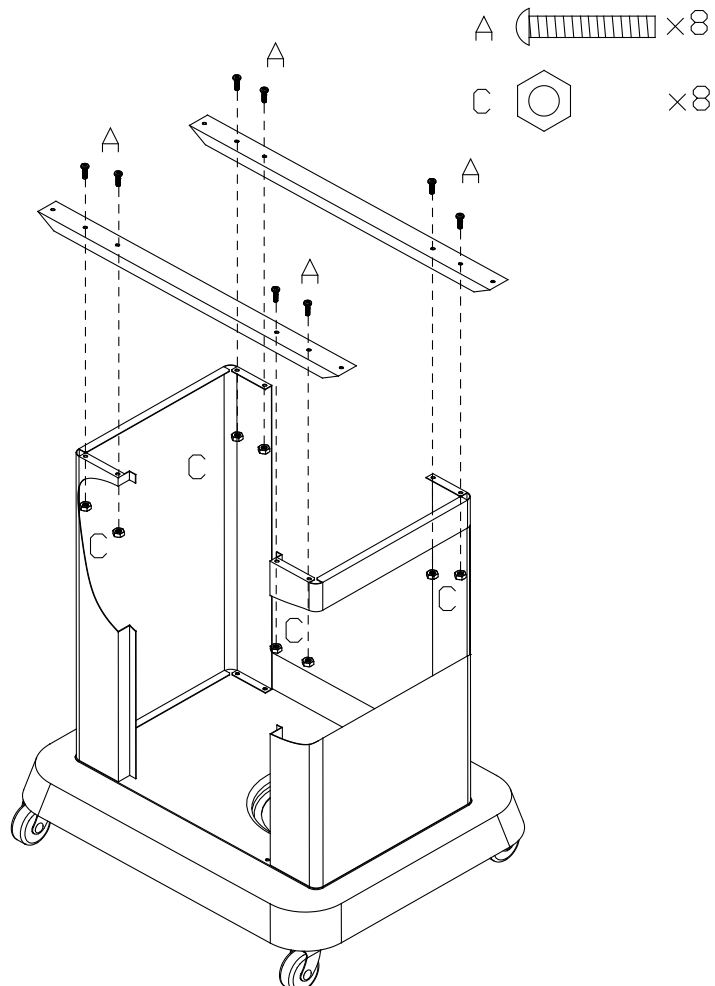
Install the left and right support in the Bottom Steel Shelf.



Step 2 Prepare parts: Front Transom and Back Transom

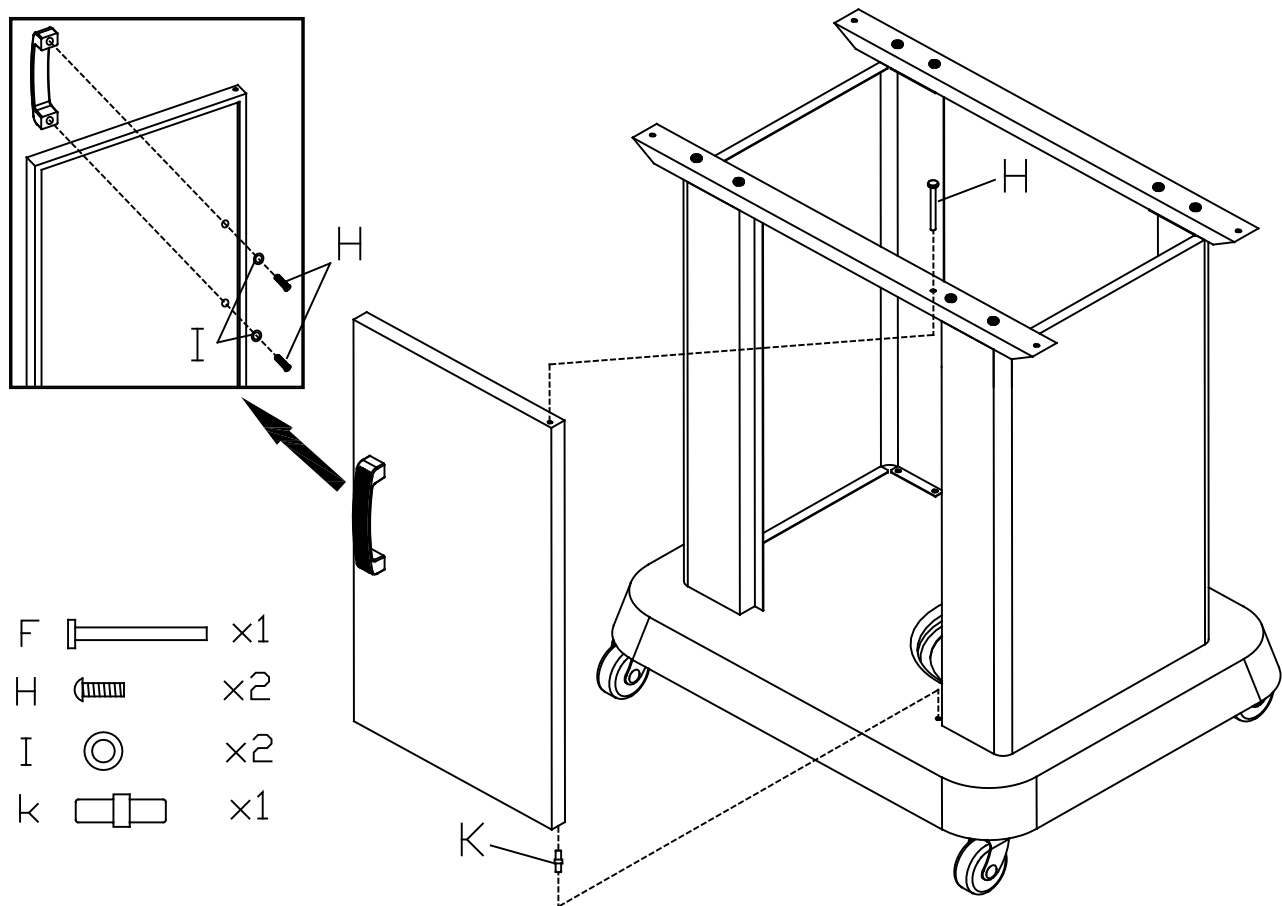
Install the Front Transom in the front of Support.

Install the Back Transom at the back of Support.



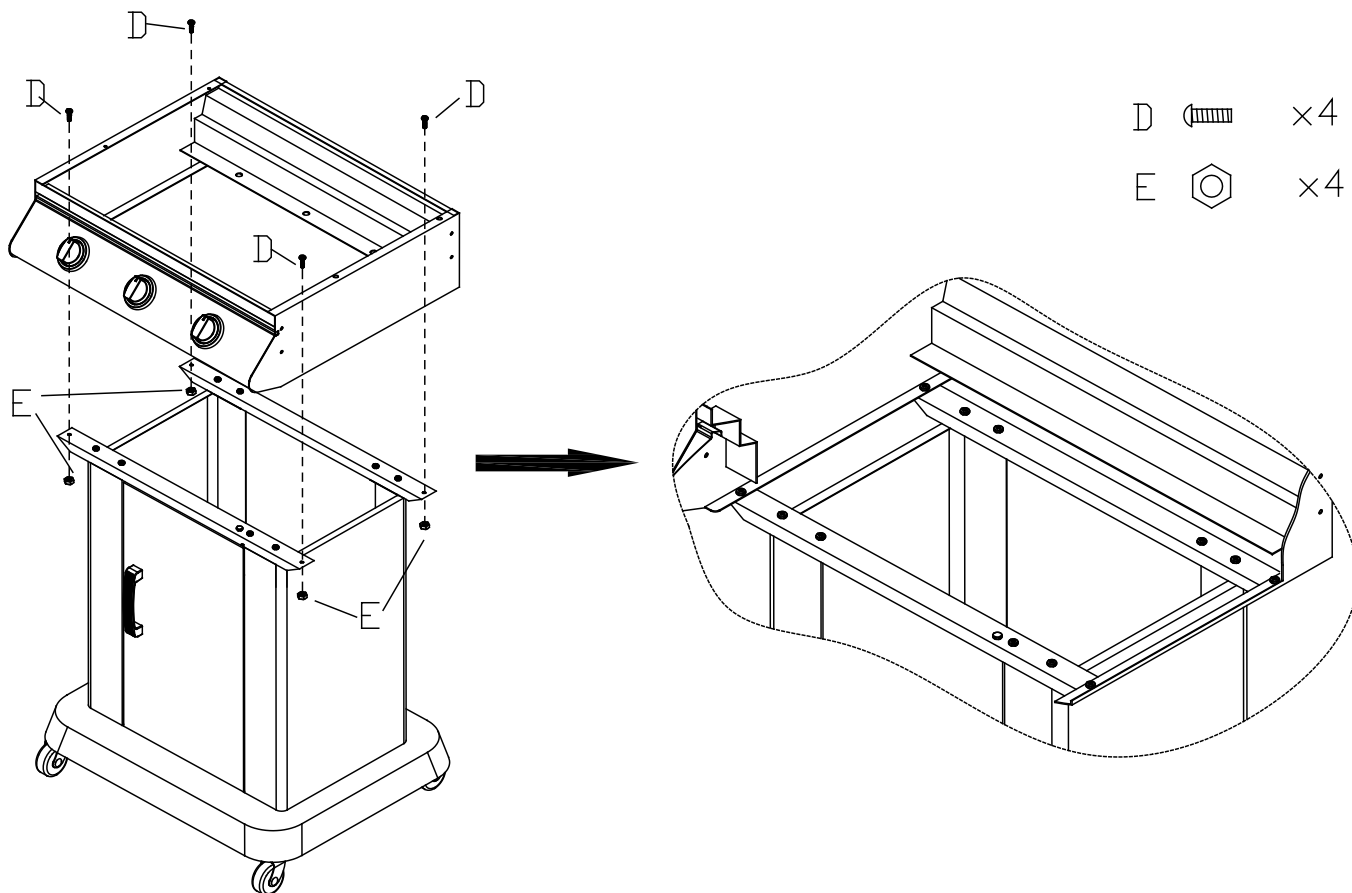
Step 3 Prepare parts: Door.

Install the Door, as follow:



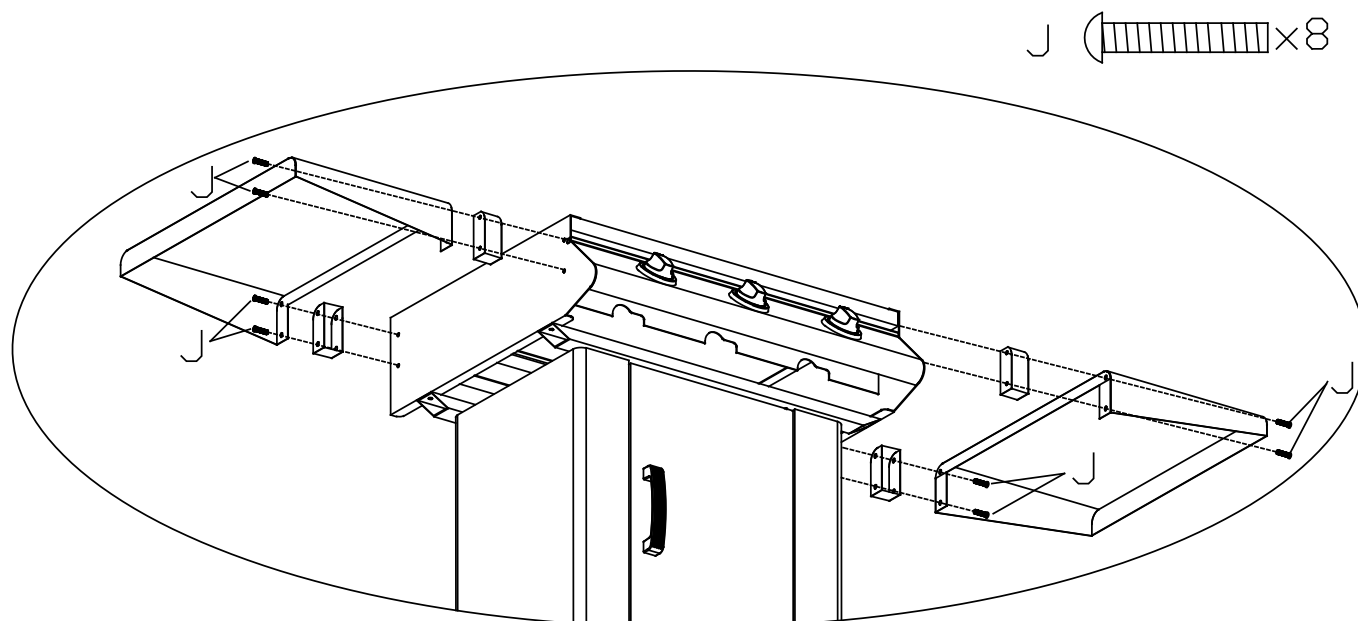
Step 4 Prepare parts: Hearth.

Fix the Hearth by screw and nut, as follow:



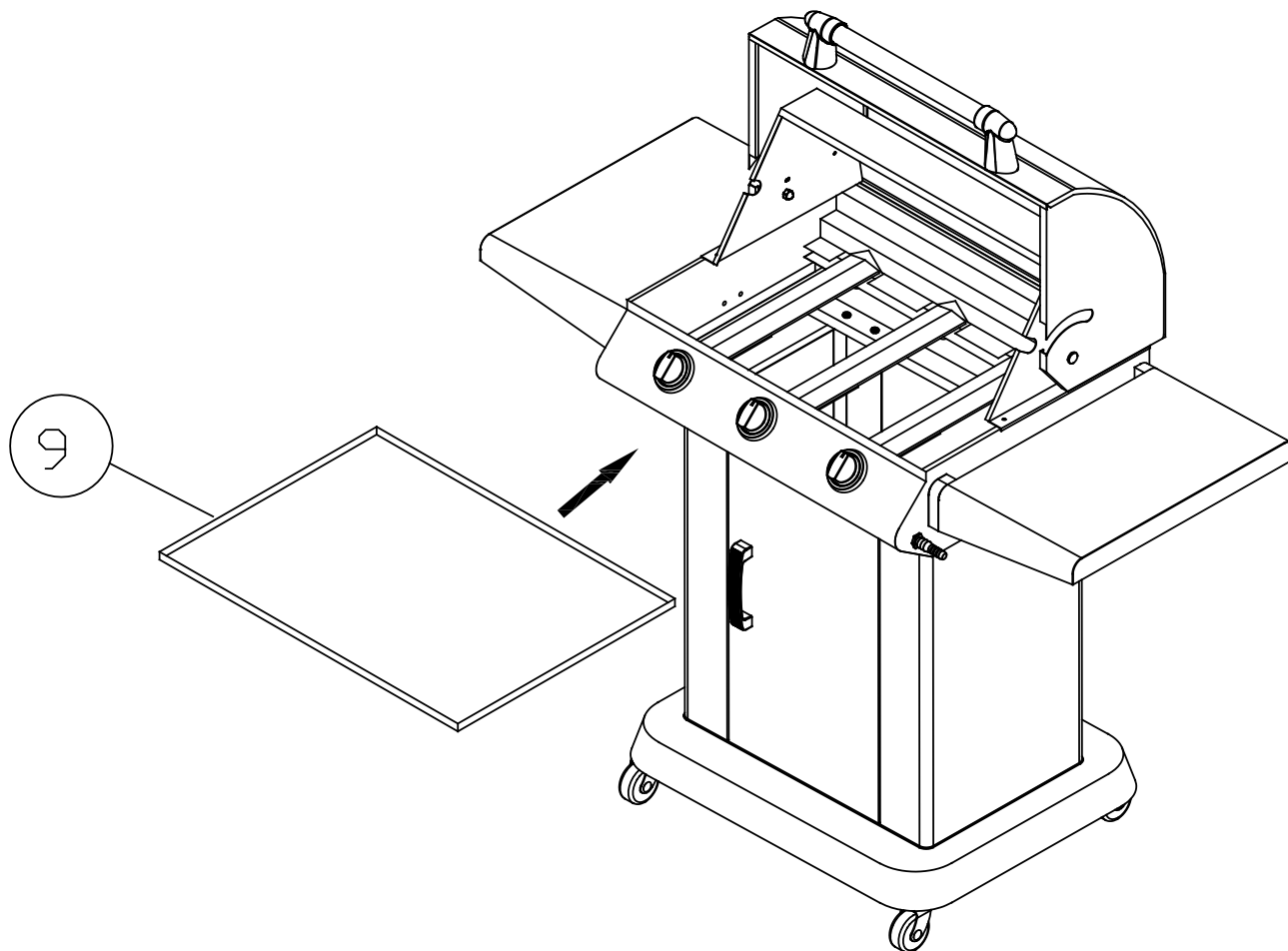
Step 5 Prepare parts: Side Steel Shelf.

Install the Side Steel Shelf by screw, as follow:



Step 6 Prepare parts : Drip Pan

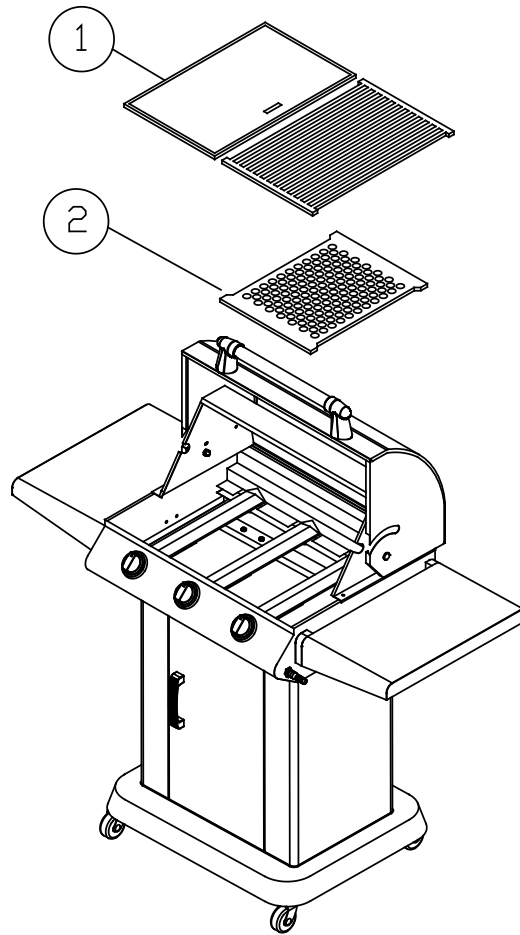
Put the Drip pan below the Hearth.



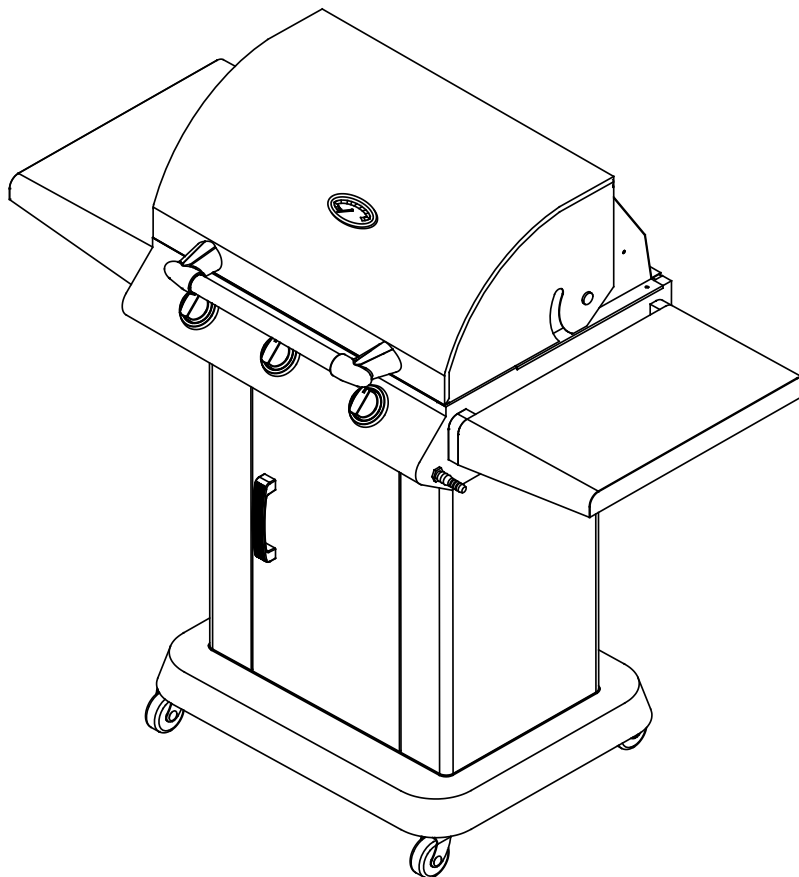
Step 7 Prepare parts : Lid 、 Swing Away 、 Cooking Grill、 Protecting Hood

Put the Briquette Grill at the right hand side, Put he Cooking Grill above the Briquette Grill.

Put the Swing Away in the Hearth, Fix the Lid by the small shaft and R-pin.



Step 8 The overall view of the assembled BBQ Grill as show below .



Preparation

You will need to purchase Butane gas bottle size 7kg or 15kg and a 28mbar regulator to operate this barbecue which can be

obtained from your nearest gas retailer.

Caution: The gas hose connecting the appliance to the gas bottle and the length recommended which shall not exceed 1.5 m.

Only use 5 kg gas bottle size on the bottom shelf of the Barbecue Gas Grill.

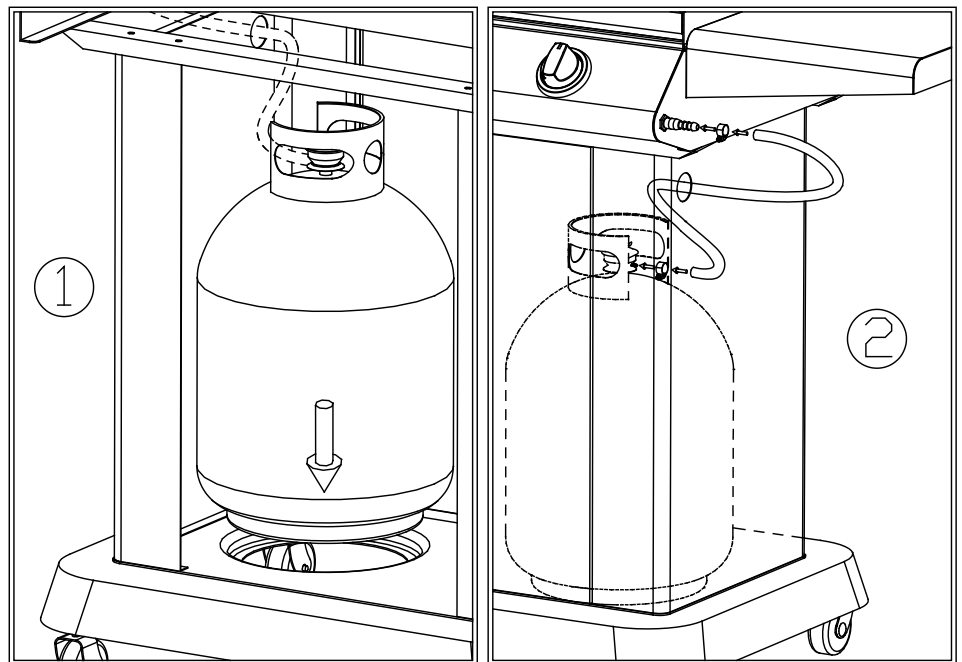
Gas bottle connection

How to connect a gas bottle:

1. Check that all control knobs and regulator are in off position
2. Connect the hose to the hose nozzle of the regulator tightly.
3. Plug the regulator onto the gas bottle valve.
4. Switch on the regulator to turn on gas supply.

How to disconnect a gas bottle:

1. Check that all control knobs and regulator are in off position
2. Pull up the regulator from the gas bottle valve.



Note: Always test gas line for leaks at connector with soapy water finishing all connections.

Ay out from any source of ignition when changing the gas bottle.

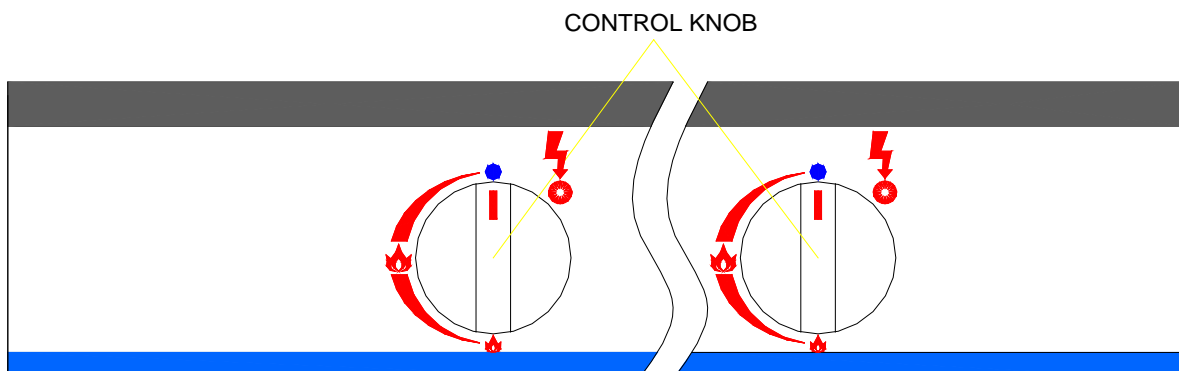
Operation Instructions

Ignition system lighting:

1. Raise the grill lid.
2. Turn on the gas supply at gas bottle valve.
3. Press and turn control knob on barbecue anti-clockwise to high position.
4. Repeat step 3 immediately several times if burner does not light.
5. Adjust flame size by turning the knob.

Manual lighting:

1. Press and turn the left control knob anti-clockwise to the high position.
2. Light the left hand burner immediately through the gap between the front of the drip pan and the barbecue body.
3. Remaining burners will cross light from the left to the right.



Note:

1. Do not use more than 1 burner on high, when cooking with the lid in the closed position. This may cause damage to the barbecue and lid. (Not applicable in Model “JH-HXFS series “)
2. Never use more than two burners on high position.

Caution: If burner fails to ignite, turn control knob off clockwise and also turn gas bottle valve off. Wait five minutes before attempting to re-light.

Cleaning instructions

1. Turn the burner on for 15-20 minutes. Grease drippings will be burned off from your grill as well as your appliance is cold before continuing.
2. Grids should be cleaned periodically by soaking and washing in soapy water.
3. The interior surfaces of the grill housing cover should be washed with hot, soapy water. Use a wire brush, steel wool or a scouring pad to remove stubborn spots.
4. Periodically check the burner to see that it is free from insects and spiders that may clog the gas system, deflecting gas flow. Ensure to clean venturi pipe area.
5. Any modifications of this appliance may be dangerous and are not permitted.

Note: Your barbecue is easy to clean with minimum effort, just follow these helpful hints for cleaning convenience.

Burner Maintenance

1. Check throat, main opening and ventilation holes of each burner and pilot flame tube regularly for insect nests. Ensure the nests are cleaned thoroughly before used.
2. Cleaning the burners periodically and make sure that the ports are free of obstructions.
3. Replace burners in the correct position and dry by lighting each one to avoid subsequent corrosion.

Storage

1. Your gas bottle must be stored outdoors in a well-ventilated area and must be disconnected from your barbecue when not being used. Ensure that you are outdoors and away from any sources of ignition before attempting to disconnect your gas bottle from your barbecue.
2. When you are using your barbecue after a period of storage, please ensure to check for gas leaks and check for any obstructions in the burner etc. before using. Also follow the cleaning instructions to ensure barbecue is safe.
3. If barbecue is stored outdoors ensure to check that all areas under the front panel are free from any obstructions (insects etc.). This area must be kept free as this may affect the flow of combustion or ventilation air.