

Verbatim Secure Data USB Drive

User Guide



User Guide Version 2.0

© All rights reserved

Table of Contents

Table of Contents.....	2
1. Introduction to Verbatim Secure Data USB Drive	3
2. System Requirements	4
3. Installation.....	5
4. Getting Started.....	5
4.1 Starting Verbatim Secure Data USB Drive	5
4.2 Setup Wizard	6
4.3 Setting up a Password.....	7
5. Working with Verbatim Secure Data USB Drive	9
5.1 Resetting your drive.....	9
5.2 Security Settings.....	10
5.3 Encrypting files and folders.....	11
5.4 Exiting Verbatim Secure Data USB Drive	12
6. Safely Remove Hardware.....	12
7. Support.....	13

1. Introduction to Verbatim Secure Data USB Drive

Verbatim Secure Data USB Drive will enhance the functionality of your portable storage device and help you keep your personal data safe and portable when on the road.

With **Verbatim Secure Data USB Drive** and your portable storage device you can simply copy data on your Verbatim Secure Flash Drive and it will be automatically encrypted using hardware-based AES 256bit encryption. All data saved on your Verbatim Secure Flash Drive will be protected by the highest standards.

Attention!

While using Verbatim Secure Data USB Drive, you should never disconnect your device without closing Verbatim Secure Data USB Drive first properly by clicking the taskbar icon of Verbatim Secure Data USB Drive and selecting “Unmount Verbatim Secure Data USB Drive”. After that use the “Safely Remove Hardware” option from Windows (see description below).

Warning!

If you fail to enter the correct password for 20 (twenty) times in a row, all data from device will be deleted. This is a security measure in case of theft or loss of the device.

2. System Requirements

- **Operating Systems:**
 - Windows 2000 Service Pack 4
 - Windows XP (Service Pack 2 is recommended)
 - Windows Vista
 - Windows 7
- **Available USB port**
- **Verbatim Secure Flash Drive**

3. Installation

Verbatim Secure Data USB Drive is **pre-installed** on your Verbatim Secure Flash Drive. No installation process is needed on your PC.

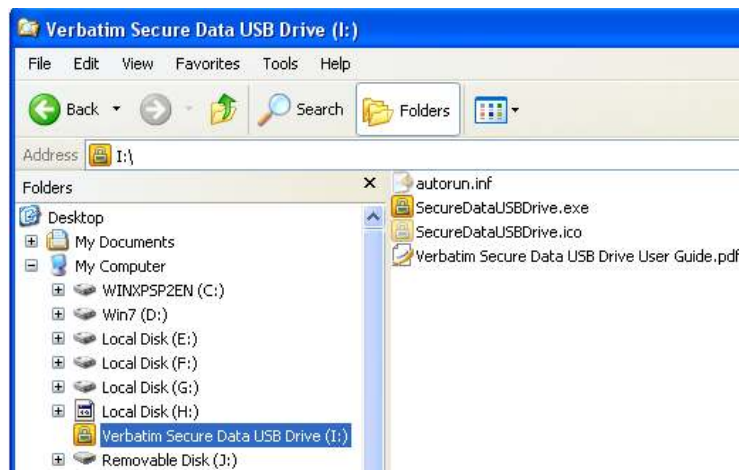
When connecting your Verbatim Secure Flash Drive, the Verbatim Secure Data USB Drive software will start itself automatically.

4. Getting Started

4.1 Starting Verbatim Secure Data USB Drive

The Verbatim Secure Data USB Drive application will start automatically as soon as you plug in your Verbatim Secure Flash Drive.

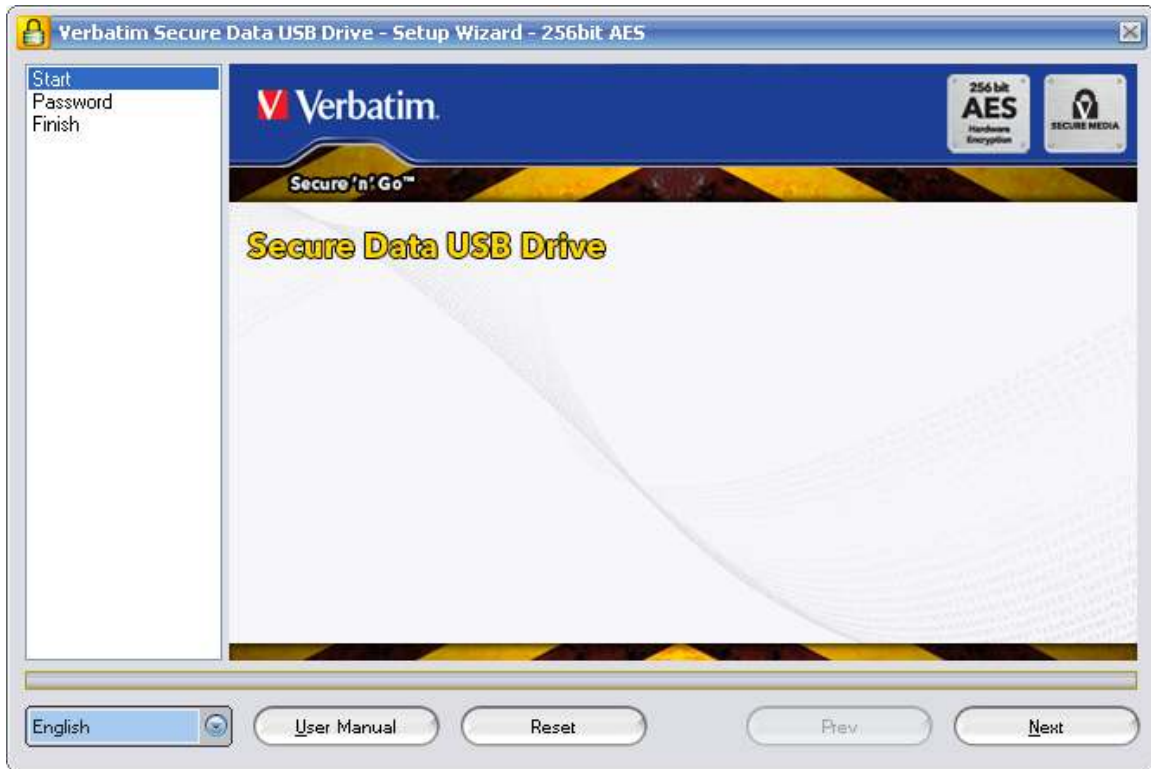
In case the application does not start automatically, open My Computer (Windows Explorer), open the CD-ROM of the Verbatim Secure Flash Drive with the drive letter e.g. D: (or F: depending on your computer) and double-click on the SecureDataUSBDrive.exe file to start the application.



The SecureDataUSBDrive.exe file will remain on your CD-ROM in order to be able to use the application when you switch between different computers.

4.2 Setup Wizard

When you start the application for the first time you will be greeted by the Setup Wizard.

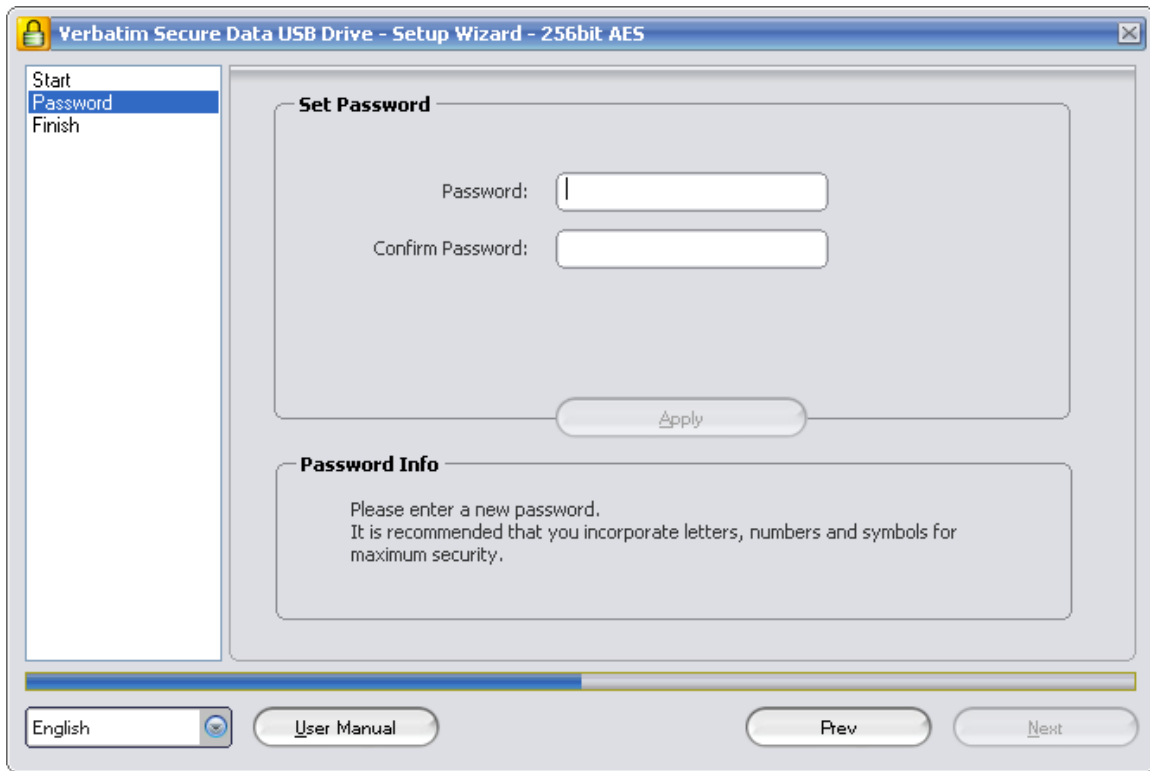


With the help of the Setup Wizard you can set up a password that will secure your data.

Just follow the simple instructions and you'll be encrypting your data in minutes.

4.3 Setting up a Password

Here you can set up a password for your device.

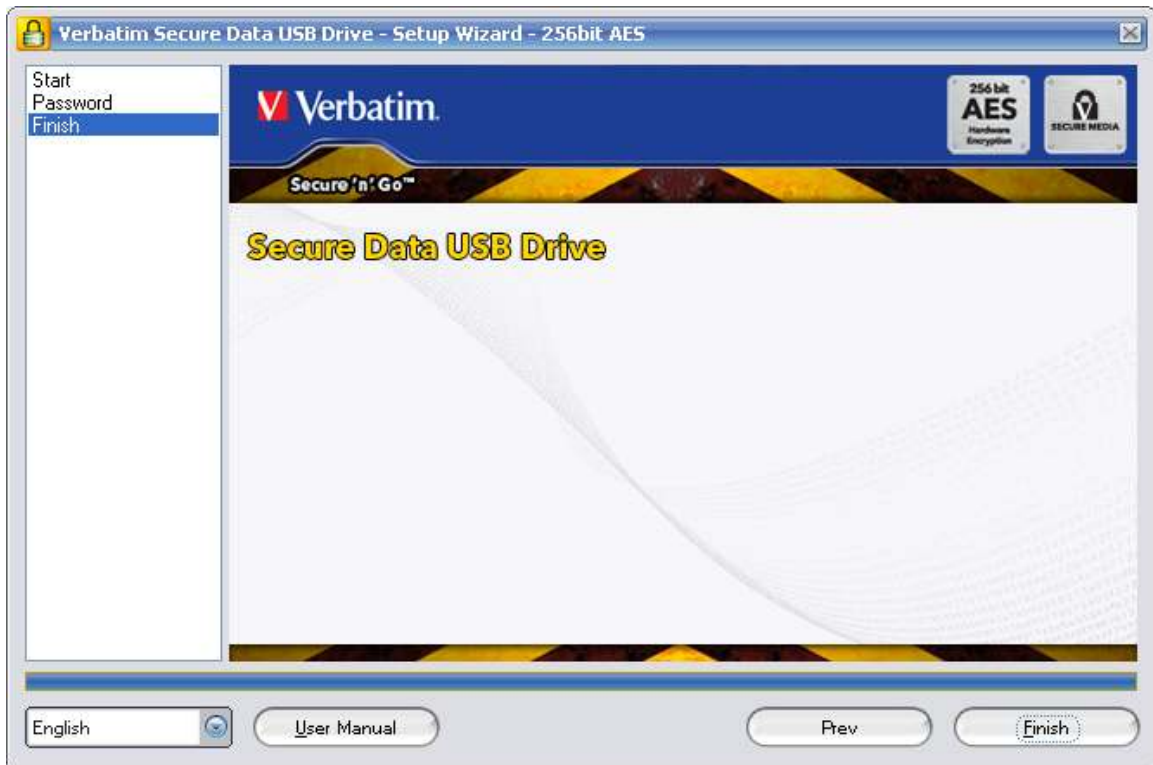


After you decide what your password will be, confirm it by typing it again in the "Confirm Password" window.

After you have introduced your password, press <Apply>, then click the <Next> button to continue.

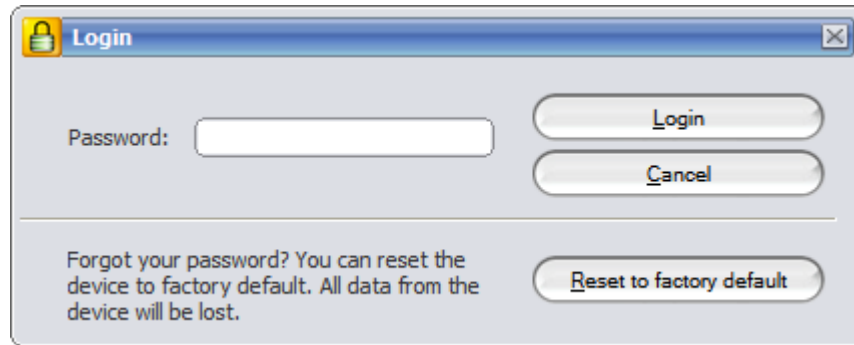


Once the security parameters have been saved, click <Finish> to complete the setup process.



5. Working with Verbatim Secure Data USB Drive

After completing the Setup Wizard the Verbatim Secure Data USB Drive application will start. For security reasons, you will be asked to enter your password in order to access the main application window.



To continue, first enter your password and press <Login>.

Attention! If you fail to enter the correct password for 20 (twenty) times in a row, all data from device will be deleted. This is a security measure in case of theft or loss of the device.

5.1 Resetting your drive

In case you have forgotten your password, you can use the <Reset to factory default> function, by clicking on the corresponding button situated in the lower-right side of the Login screen



This will reset the device to factory settings. It will securely overwrite all encryption data and your password on the **Verbatim Secure Flash Drive**.

Applying the Reset to factory default feature will securely destroy all data on the device.

5.2 Security Settings

The security settings can be modified from within Verbatim Secure Data USB Drive. You can access the security settings menu by selecting “Security Settings...” from the toolbar area.



The image shows a software dialog box titled "Verbatim Secure Data USB Drive - 256bit AES". The dialog has a tab labeled "Password Settings". Inside the dialog, there are two main sections:

- Change Password:** This section contains three text input fields labeled "Old Password:", "New Password:", and "Confirm New Password:". Below these fields is an "Apply" button.
- Password Info:** This section contains a text prompt: "Please enter your old password."

At the bottom center of the dialog is an "OK" button.

5.3 Encrypting files and folders

Keeping your files safe and protected has never been easier. Simply copy the files you wish to protect on your Verbatim Secure Flash Drive and they will be encrypted automatically.

Please note that the encryption takes place seamlessly on a lower level by device hardware, not from within Verbatim Secure Data USB Drive. Files that are stored on the devices memory are encrypted with 256bit AES encryption. This means that you will be able to work with the files already copied on your Verbatim Secure Flash Drive, without having to manually decrypt them.

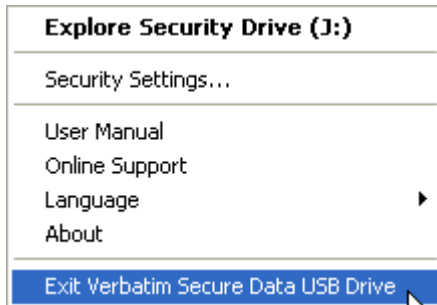
Also, the files are saved on the private partition of your Verbatim Secure Flash Drive and they are only accessible when Verbatim Secure Data USB Drive is running and you provided the correct password.

The AES encryption used by Verbatim Secure Data USB Drive is hardware-based 256 bit encryption and can withstand latest methods of high-tech hacking. Even if by some means, the memory of the device is read, the data on it is still not compromised.

When you exit the application, Verbatim Secure Data USB Drive will revert back to the public partition.

5.4 Exiting Verbatim Secure Data USB Drive

To exit Verbatim Secure Data USB Drive, right-click on the taskbar icon of Verbatim Secure Data USB Drive and select “Exit Verbatim Secure Data USB Drive” from the menu.

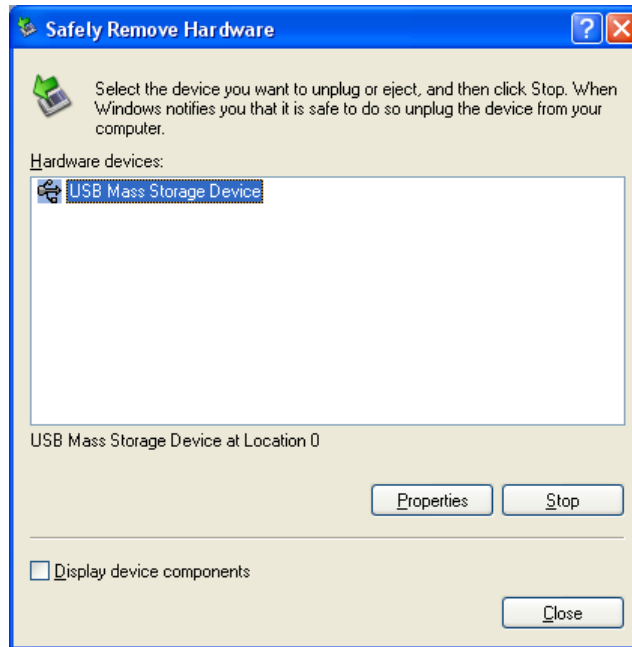


6. Safely Remove Hardware

Before you unplug your Verbatim Secure Flash Drive from the USB Port of your computer, you have to use the “Safely Remove Hardware” option from the system tray, otherwise you risk corrupting the data on your USB Drive. This is especially important when using the device on a Windows 2000 PC.

To Safely Remove Hardware, double-click on the system tray icon, then select the USB Drive you want to remove from the list and click on the “Stop” button.





A message will appear indicating that the portable storage device can now be securely removed. If a message saying “The ‘...’ device cannot be stopped right now” appears, you have to close your Windows Explorer or any other application that is still accessing the data on the Verbatim Secure Flash Drive and repeat the Safely Remove Hardware process.

7. Support

In case additional help, such as the FAQs or e-mail support is required, click on the “Online Help” link in the application window and you will be automatically directed to our support website.

© All rights reserved. Windows is a registered trademark of Microsoft Corporation. All other names and trademarks are property of their respective owners.