

Service
Service
Service



Philips Domestic Appliances and Personal Care

Service Manual

MSH coding 8836 993 00000

S-Class filter accessory set HR 6993

Especially designed for **Philips Vision vacuum cleaners**.

The S-Class filter is capable of removing from the outlet air at least 99.97% of all the particles measuring 0.0003 mm and more.

This includes not only normal domestic dust, but also harmful microscopic vermin such as glycyphagii and their excrements.

These are known as causes of bronchial allergies.



Grill 4822 458 10596

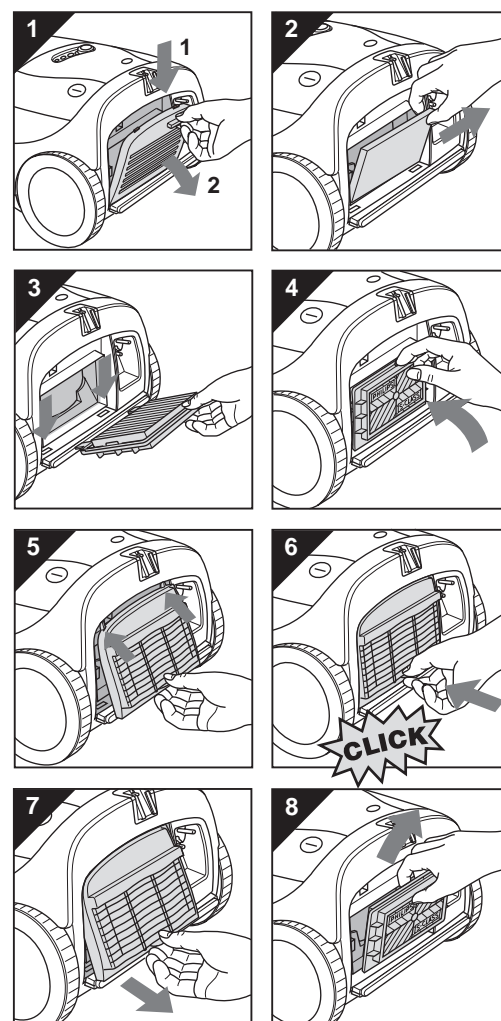
Filter 4822 480 10084

Important

- To guarantee optimum air filtering, the S-Class filter needs replacement at least once a year.
- For replacement, single S-Class filters are available under **type n°. HR 6992 or service n°. 4822 480 10084**.
- Please note that the S-Class filter holder will replace the present outlet grill of your **Vision vacuum cleaner**. However, we advise you to keep the outlet grill for possible later use.

Before first use

- Remove the AFS filter holder containing the AFS filter (fig. 1).
- Remove the dark grey foam material which has now become visible (fig. 2).
- Position the S-Class filter as indicated (fig. 3).
- Ensure that the protruding notches fit well in the apertures.
- Push the S-Class filter well into place (fig. 4).
- Position the filter holder in the vacuum cleaner (fig. 5).
- Close the filter holder ("Click!") (fig. 6).



How to replace the filter

- Open the filter holder (fig. 7).
- Remove the old filter (fig. 8).
- Place the new filter as indicated in fig. 4-6.

Vision vacuumcleaners are:

HR 8731	HR 8837	HR 8948
HR 8733	HR 8838	
HR 8735	HR 8847	
HR 8745	HR 8881	
HR 8765	HR 8882	
HR 8775	HR 8891	
	HR 8892	
	HR 8893	
	HR 8895	
	HR 8897	
	HR 8899	