



HR 8881 HR 8891
 HR 8882 HR 8892
 HR 8893
 HR 8895
 HR 8897
 HR 8899

Philips Domestic Appliances and Personal Care

Service Manual

PRODUCT INFORMATION

- Maximum air displacement : 34 l/sec.
- Maximum vacuum water column : 275 cm
- Power consumption (IEC) 225V : 1200W
- Dust storage capacity : 4 litres
- Cord length (depends on version) : 6 or 8.5 metres
- Filter system (depends on version) : Paper dustbag
 : Exhaust air filter
 : Motor inlet filter
 : or carbon filter
- Dimensions cleaner : 48 x 30 x 25 cm
- Weight without accessories : 6.4 kg
- Noise : 75 dB

OPTIONAL

Exhaust air filter	HR 6932	(4822 015 70056)	
Cotton dustbag	HR 6935	(4822 480 10072)	
Paper dustbag set	HR 6938	(4822 015 70049)	economy
Paper dustbag set	HR 6938	(4822 015 70057)	hygiene
Hard floor nozzle	HR 6943	(4822 479 20222)	
Carbon inlet filter	HR 6949	(4822 480 20145)	
Dust sensor	HR 6953	(4822 452 80167)	
Turbo brush	HR 6988	(4822 479 20196)	
Brush of e. nozzle	HR 6991	(4822 479 30179)	
S-class filter	HR 6992	(4822 480 10084)	

ADJUSTING THE PCB ON THE MOTOR TO 220V, 60Hz

1. Make sure that the potentiometer (item 58) is set at **min. position**.
2. Adjust the potentiometer on the PCB (item 44) on the motor to 220V/60Hz. to allow the motor to run smoothly.

Please note: * that the standard setting of the PCB is 230V, 50Hz.
 * that there are open-circuit voltages on all wires.

MSH coding :

8838 881 00000 (red)	8838 893 00000 (blue/met.)
8838 882 00000 (orange/met.)	8838 895 00000 (green/met.)
8838 891 00000 (orange/met.)	8838 897 00000 (green/met.)
8838 892 00000 (gold/met.)	8838 899 00000 (aub/met.)

SERVICE INFORMATION

- To open the appliance, first remove the panel (item 13) with a big screw driver (V) to disconnect the 4 snap locks (the 4 screws of button panel item 39 can be loosed) and then remove the two pedals (items 1 and 14) with a pin (W), max. diameter 2.5 mm.
- Power meter (8838 000 60300) is a commercial item with a fixed air displacement which measures the vacuum of the appliance.
- Component configuration on exploded view may differ in case of specific versions. However, the actual components are distinguished by means of code numbers.
- If a repair has been made, make sure that all functions of the appliance are working correctly.
- The spare parts have been standardized as much as possible.
 (x) = standardized spare part in appliance concerned.
 x = original spare part in appliance concerned.
- Item 16 Cotton dustbag is used in those countries where paper dustbags are not available.
- Item 17 suction hose must be 460 mm in the x versions and must be shortened to 420 mm in the (x) versions.
- Item 19 wire beam is provided with 4 connecting wires (brown and blue only used in the version HR 8899).
- Item 120 up to and including 156. The assembly of accessories depends on the national version.
- Item 21 is provided with the long cord-winder spring; both long and short cords can be used in combination with this spring.
- To disassemble the cordwinder use TORX screw driver no T15, which is one of a set consisting of T20, T15, T10, T9, T8, T7 and T6 = 4822 395 50145.
- Depending on the original cord, the spare cord must be shortened from 8.5 into 6 metres.
- Item 37 is provided with a control button to activate the microswitch.
- Item 34. Remove the control lever in the versions without microswitch.
- Item 43 air valve opens to cool the motor if the air displacement is too low or if the air flow is blocked.
- Item 155 Belt tension is 5 Newtons or 120-150mA after 1 min. turning.
- All vacuum cleaners can switched on with or without (remote control) hose.



Low voltage version.

- Item 20 In the dust chamber a hole with a diam. of 6 mm must be drilled, to cool the cord winder via the cord winder cooling hose, (position the hole as is in the dust chamber to be replaced).
- Item 21 In the reel half spring unit a rib must be removed to connect the cooling hose, just as in the replaced unit.

- 4822 530 21034 Cord winder cooling hose (The correct length of the tube without connectors is 84 mm).

- Item 55 4822 361 10913 Motor 100 - 110 V

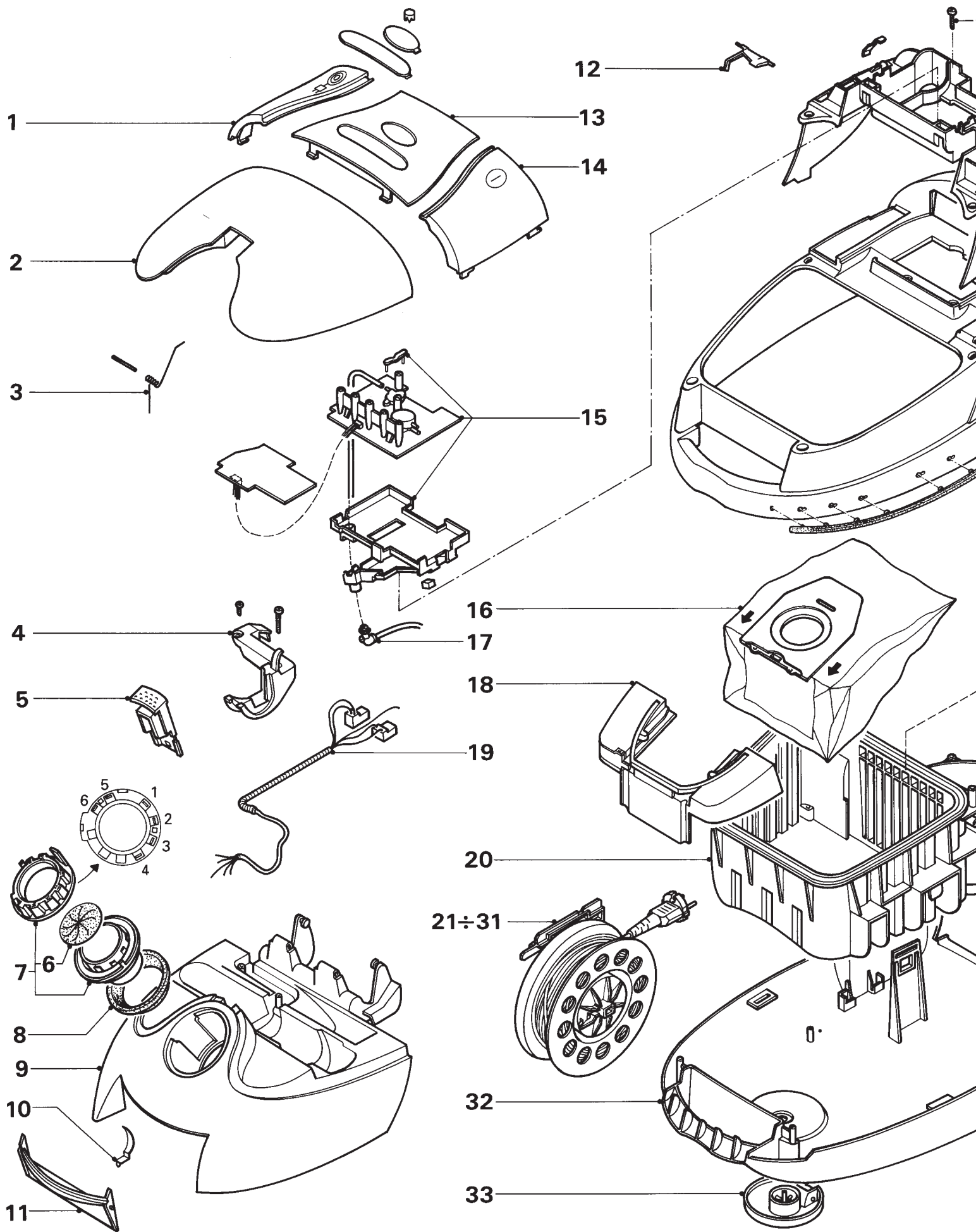


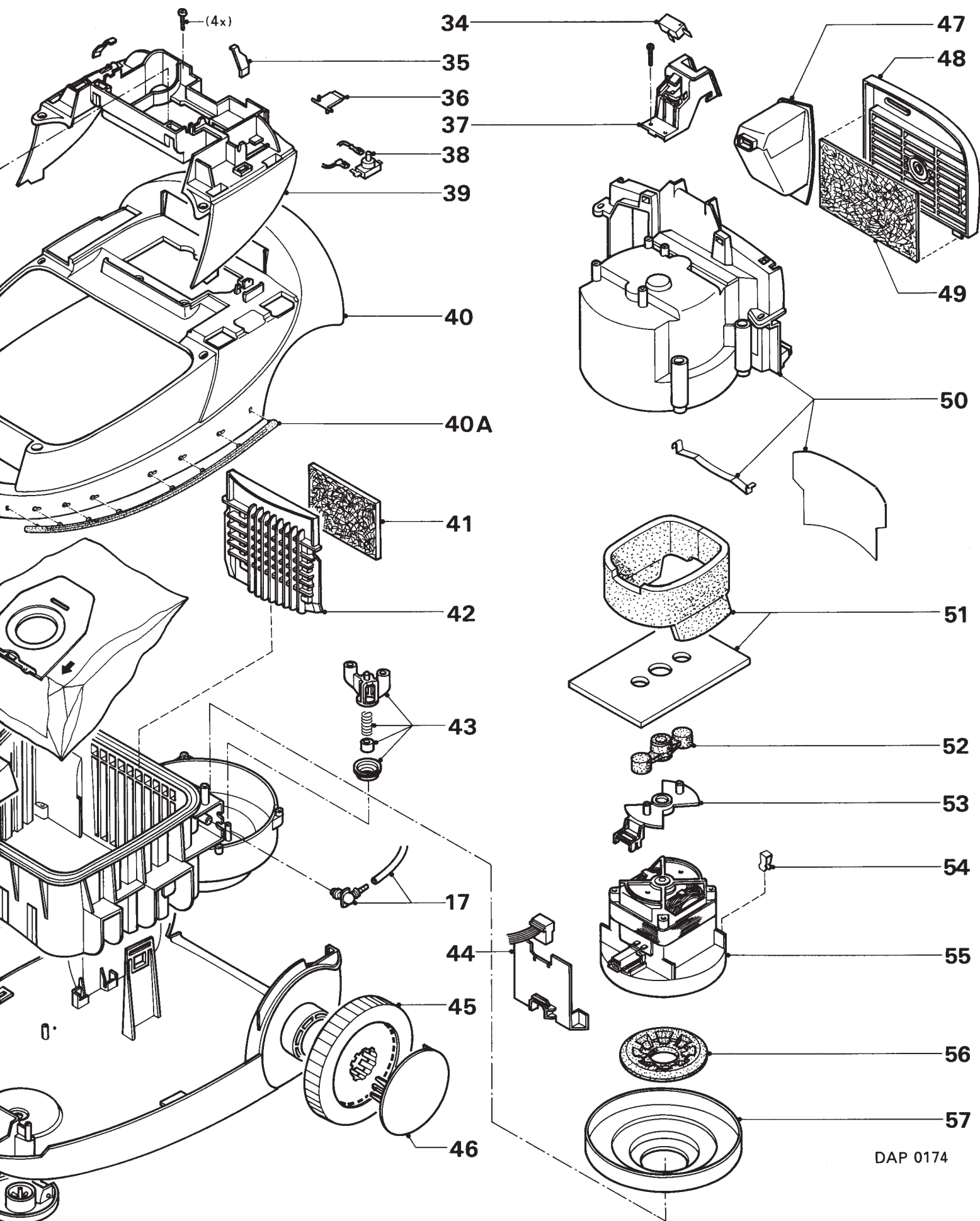
with warning sign.
(Motor metal parts are under live if switched on).

HR 8...		.881	.882	.891	.892	.893	.895	.897	.899	Description
Pos	4822									
1	410 11296	-	-	-	-	-	X	X	-	cord-winder pedal
	410 11297	-	-	-	-	X	-	-	-	cord-winder pedal
	410 11298	-	-	-	X	-	-	-	-	cord-winder pedal
	410 11299	-	X	X	-	-	-	-	-	cord-winder pedal
	466 10782	-	-	-	-	-	-	-	X	cord-winder pedal
2	466 10762	X	-	-	-	-	-	-	-	cord-winder pedal
	442 01025	-	-	-	-	-	X	X	-	accessory cover
	442 01027	-	-	-	-	X	-	-	-	accessory cover
	442 01029	-	-	-	X	-	-	-	-	accessory cover
	442 01032	-	X	X	-	-	-	-	-	accessory cover
3	442 00071	-	-	-	-	-	-	-	X	accessory cover
	442 00054	X	-	-	-	-	-	-	-	accessory cover
	492 11044	X	X	X	X	X	X	X	X	acc. cover spring
	442 01026	-	-	-	-	-	X	X	-	lead lid
	442 01028	-	-	-	-	X	-	-	-	lead lid
5	442 00072	-	-	-	-	-	-	-	X	lead lid
	442 01031	-	-	-	X	-	-	-	-	lead lid
	442 01033	-	X	X	-	-	-	-	-	lead lid
	442 00064	X	-	-	-	-	-	-	-	lead lid
	417 11264	X	X	X	X	X	X	X	X	acc. cover lock
6	532 12374	X	X	X	X	X	X	X	X	diaphragm valve
	528 10943	X	X	X	X	X	X	X	X	swivel connector
	532 70286	X	X	X	X	X	X	X	X	sealing rubber
	442 01043	-	-	-	-	-	X	X	-	dust cover
	442 01039	-	X	X	-	-	-	-	-	dust cover
10	442 01041	-	-	-	X	-	-	-	-	dust cover
	442 01042	-	-	-	-	X	-	-	-	dust cover
	442 00073	-	-	-	-	-	-	-	X	dust cover
	442 00055	X	-	-	-	-	-	-	-	dust cover
	492 11045	X	X	X	X	X	X	X	X	dust-cover spring
11	460 11095	-	-	-	-	-	X	X	-	dust-cover snaplock
	460 11092	-	X	X	-	-	-	-	-	dust-cover snaplock
	460 11093	-	-	-	X	-	-	-	-	dust-cover snaplock
	460 11094	-	-	-	-	X	-	-	-	dust-cover snaplock
	460 11028	-	-	-	-	-	-	-	X	dust-cover snaplock
12	460 11024	X	-	-	-	-	-	-	-	dust-cover snaplock
	402 10108	X	X	X	X	X	X	X	X	cord-winder lever
	441 12038	X	-	-	-	-	-	-	-	version panel
	441 12037	-	X	X	-	-	-	-	-	version panel
	441 12053	-	-	-	X	-	-	-	-	version panel
14	441 12033	-	-	-	-	X	-	-	-	version panel
	441 12034	-	-	-	-	-	X	-	-	version panel
	441 12035	-	-	-	-	-	-	X	-	version panel
	441 12036	-	-	-	-	-	-	-	X	version panel
	466 11643	-	-	-	-	-	X	X	-	switch pedal
15	466 11639	-	X	X	-	-	-	-	-	switch pedal
	466 11641	-	-	-	X	-	-	-	-	switch pedal
	466 11642	-	-	-	-	X	-	-	-	switch pedal
	466 10784	-	-	-	-	-	-	-	X	switch pedal
	466 10764	X	-	-	-	-	-	-	-	switch pedal
15	214 11309	-	-	-	-	-	-	X	X	PCB
	214 11308	-	-	-	-	-	X	-	-	PCB 230V/50Hz
	214 11407	-	-	-	-	-	X	-	-	PCB 220V/60Hz
	214 11913	-	-	-	-	-	-	X	-	PCB rem. control 100-127V
	214 11912	-	-	-	-	-	X	-	-	PCB eco/auco 100-127V

HR 8...		.881	.882	.891	.892	.893	.895	.897	.899	Description
Pos	4822									
16	015 70057	X	X	X	X	X	X	X	X	paper dustbag hyg.
	480 10072	(X)	(X)	(X)	(X)	(X)	(X)	(X)	(X)	cotton dustbag
17	530 10246	X	X	X	X	X	(X)	(X)	(X)	suction hose (460)
18	256 10155	X	X	X	X	X	X	X	X	dustbag holder
19	320 11181	-	-	-	-	-	-	(X)	X	connecting cable
20	441 11625	X	X	X	X	X	X	X	X	dust chamber
21	492 71489	(X)	(X)	X	X	X	X	X	X	reel half spring unit
22	466 10776	X	X	X	X	X	X	X	X	connection piece
23	532 52554	X	X	X	X	X	X	X	X	brake tyre
24	528 10836	X	X	X	X	X	X	X	X	reel half contact unit
25	290 81474	X	X	X	X	X	X	X	X	contact-ring plate
26	321 10816	X	X	X	X	X	X	X	X	cordset Australia
27	321 10822	X	X	X	X	X	X	X	X	cordset Japan (2 x 1.25 mm ²)
	321 11348	X	X	X	X	X	X	X	X	cordset (2 x 0.75 mm ²)
28	321 10818	X	X	X	X	X	X	X	X	cordset UK
29	321 10783	-	-	X	X	X	X	X	X	cordset L = 8.3 m 4.8 mm pins
	321 11339	X	X	-	-	-	-	-	-	cordset L = 6.3 m 4.8 mm pins
30	321 10806	X	X	X	X	X	X	X	X	cordset
31	321 10815	X	X	X	X	X	X	X	X	cordset
32	441 11626	X	X	-	-	X	X	X	X	lower housing
33	441 12039	-	-	X	X	-	-	-	-	lower housing and plug
34	528 10925	X	X	X	X	X	X	X	X	caster assy
35	271 30856	X	X	X	X	X	X	-	-	micro-switch
36	492 11009	X	X	X	X	X	X	X	X	button spring
	404 40703	X	X	X	X	X	X	X	X	switch lever
37	402 10111	X	X	X	X	X	X	(X)	(X)	parking hook
38	276 13205	X	X	X	X	X	X	X	X	main switch
39	441 12022	-	-	-	-	-	X	X	-	button panel
	441 12018	-	X	X	-	-	-	-	-	button panel
	441 12019	-	-	-	X	-	-	-	-	button panel
	441 12021	-	-	-	-	X	-	-	-	button panel
	441 11634	-	-	-	-	-	-	-	X	button panel
	441 11627	X	-	-	-	-	-	-	-	button panel
40	441 11628	X	X	-	-	-	-	-	-	upper housing
	441 12023	-	-	X	X	X	X	X	X	upper housing with buffer
40A	460 11097	-	-	X	X	X	X	X	X	buffer
41	480 40234	X	X	X	X	X	X	X	X	safety filter duo
	480 20145	-	-	-	-	-	-	-	-	carbon filter (opt.)
42	458 10458	X	X	X	X	X	X	X	X	safety filter grille
	458 10461	-	-	-	-	-	-	-	-	carbon filter grille (opt.)
43	360 10157	X	X	X	X	X	X	X	X	air inlet valve 220-240V
	360 10233	-	-	X	X	X	X	X	X	air inlet valve 100-127V
44	214 11359	X	X	X	X	X	X	-	-	power module dt 230V
	214 11361	-	-	-	-	-	-	X	X	power module 230V
	214 11911	-	-	X	X	X	X	X	X	power module 100-110V
45	528 10944	X	X	-	-	-	-	-	-	rear wheel
	528 11163	-	-	X	X	X	X	X	X	rear wheel soft
46	462 10636	X	X	-	-	-	-	-	-	rear wheel cap
	462 10987	-	-	X	X	X	X	X	X	rear wheel cap
47	462 10637	X	X	X	X	X	X	X	X	cord outlet
48	458 10459	X	X	X	X	-	-	X	-	back grille
	458 10596	-	-	-	-	X	X	-	X	S-filter holder
49	015 70056	X	X	X	X	-	-	X	-	AFS filter
	480 10084	-	-	-	-	X	X	-	X	S-filter
50	441 11629	X	X	X	X	X	X	X	X	motor housing
51	532 12375	X	X	X	X	X	X	X	X	silencers
52	466 10765	X	X	X	X	X	X	X	X	back motor buffer
53	402 10109	X	X	X	X	X	X	X	X	suspension bracket
54	492 11011	X	X	X	X	X	X	X	X	PCB mounting spring
55	361 10768	X	X	X	X	X	X	X	X	motor 1241 - 230V
56	361 10913	-	-	X	X	X	X	X	X	motor 100-110V
	466 62655	X	X	X	X	X	X	X	X	front motor buffer
57	466 10766	X	X	X	X	X	X	X	X	motor disc 1241
58	101 11361	X	X	X	X	X	X	-	-	potentiometer 220-240V
	101 11689	-	-	X	X	X	X	-	-	potentiometer 100-127V

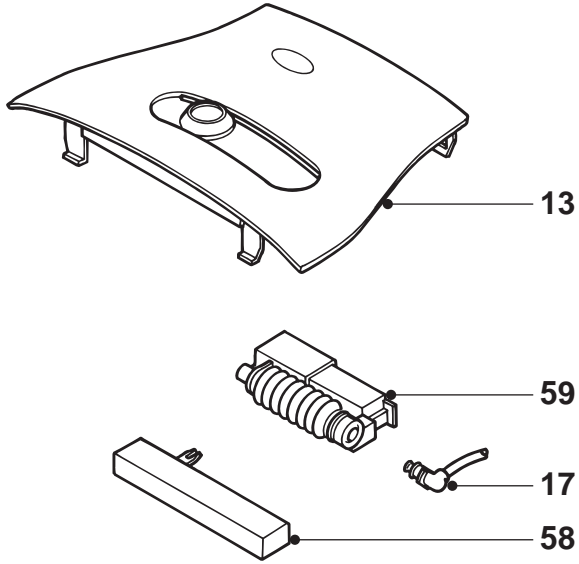
HR 8...		.881	.882	.891	.892	.893	.895	.897	.899	Description
Pos	4822									
59	450 10067	X	X	X	X	X	-	-	-	suct. power indicator 220-240V
	450 10209	-	-	X	X	X	-	-	-	suct. power indicator 100-127V
120	492 71622	X	X	-	-	-	-	-	X	metal-tube clip
121	530 10229	X	X	-	-	-	-	-	-	metal-tube
122	492 71623	-	-	X	X	X	X	X	-	telesc. -tube clip
123	530 10233	-	-	X	X	X	X	X	-	telescopic tube
124	452 80167	(X)	(X)	(X)	(X)	(X)	(X)	(X)	(X)	dust indicator (opt.)
125	530 10247	X	X	X	X	X	X	-	-	eco bend + hose
126	530 10235	X	X	X	X	X	X	-	-	eco bend
127	479 70072	X	X	X	X	X	X	X	-	nozzle
128	469 20123	X	X	X	X	X	X	X	X	nozzle strips
129	479 50062	X	X	X	X	X	X	X	X	crevice nozzle
130	479 60118	X	X	X	X	X	X	X	X	small nozzle
131	479 30176	X	X	X	X	X	X	X	X	brush nozzle
132	530 10248	-	-	-	-	-	-	X	-	rnc hose
137	479 20222	-	-	-	-	-	-	-	X	hard floor nozzle
138	530 10249	-	-	-	-	-	-	-	X	power grip hose
139	530 10251	-	-	-	-	-	-	-	X	power tube
150	417 11265	-	-	-	-	-	-	-	X	connection lock
140	441 12056	-	-	-	-	-	-	-	X	upper housing
141	460 11029	-	-	-	-	-	-	-	X	nozzle bumper
142	410 10187	-	-	-	-	-	-	-	X	release button
143	214 11362	-	-	-	-	-	-	-	X	PCB 230V
	214 11363	-	-	-	-	-	-	-	X	PCB 100-127V
144	402 10112	-	-	-	-	-	-	-	X	release spring/hook
145	528 10947	-	-	-	-	-	-	-	X	front wheels
146	528 10945	-	-	-	-	-	-	-	X	rear wheels
147	460 11031	-	-	-	-	-	-	-	X	bottom strip
148	441 12057	-	-	-	-	-	-	-	X	lower housing
149	479 20203	-	-	-	-	-	-	-	X	brush
150	417 11265	-	-	-	-	-	-	-	X	connection lock
151	530 10252	-	-	-	-	-	-	-	X	steering tube
152	361 11021	-	-	-	-	-	-	-	X	motor 230V
	361 10772	-	-	-	-	-	-	-	X	motor 100-127V
153	464 10355	-	-	-	-	-	-	-	X	frame
154	532 60915	-	-	-	-	-	-	-	X	frame buffer
155	358 10159	-	-	-	-	-	-	-	X	drive belt
156	460 11032	-	-	-	-	-	-	-	X	brush strips
140 ÷ 156	479 20204	-	-	-	-	-	-	-	X	electr. brush complet 230V



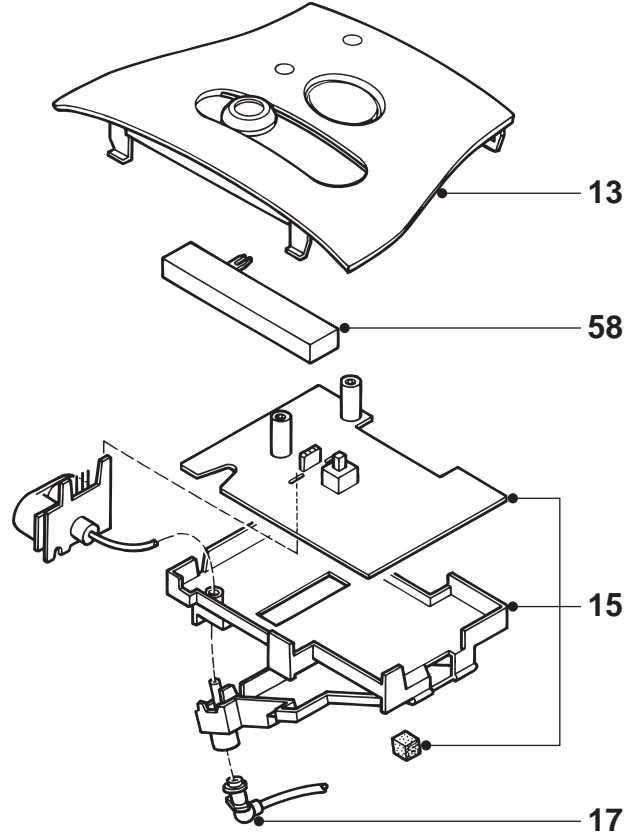


DAP 0174

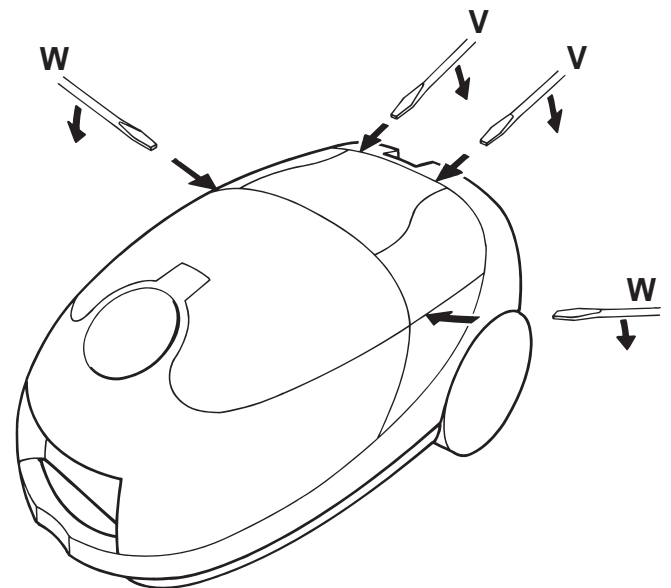
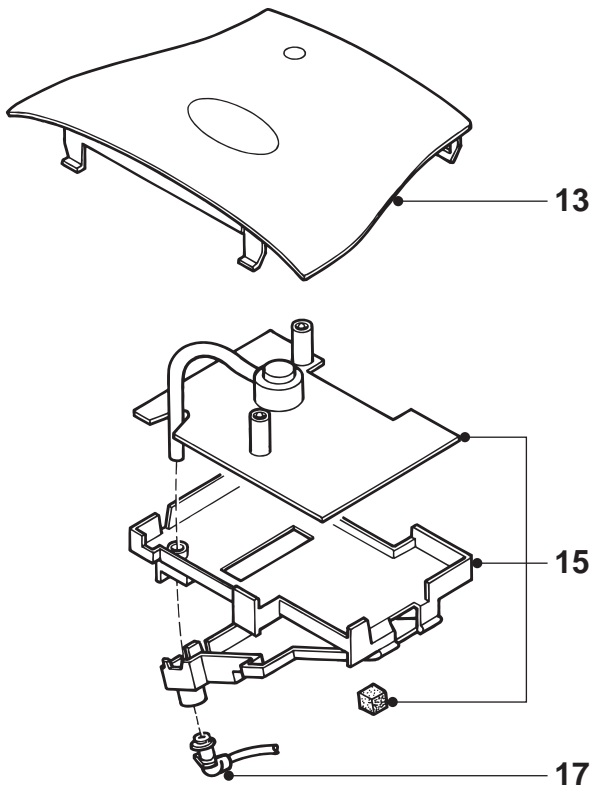
HR 8881
 HR 8882
 HR 8891
 HR 8892
 HR 8893

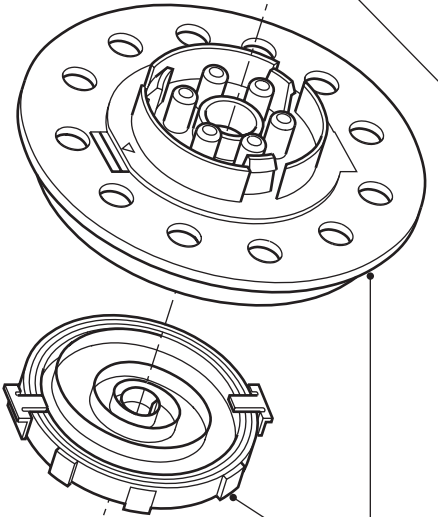
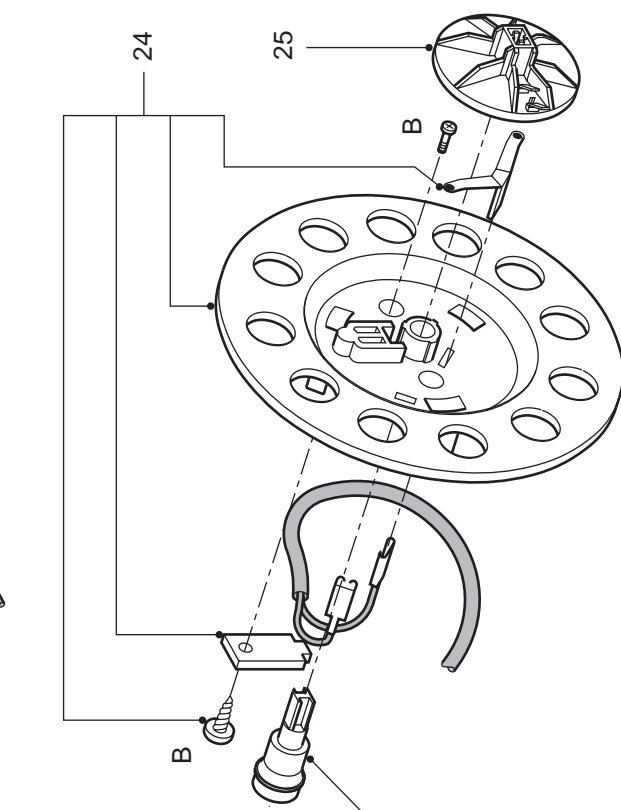
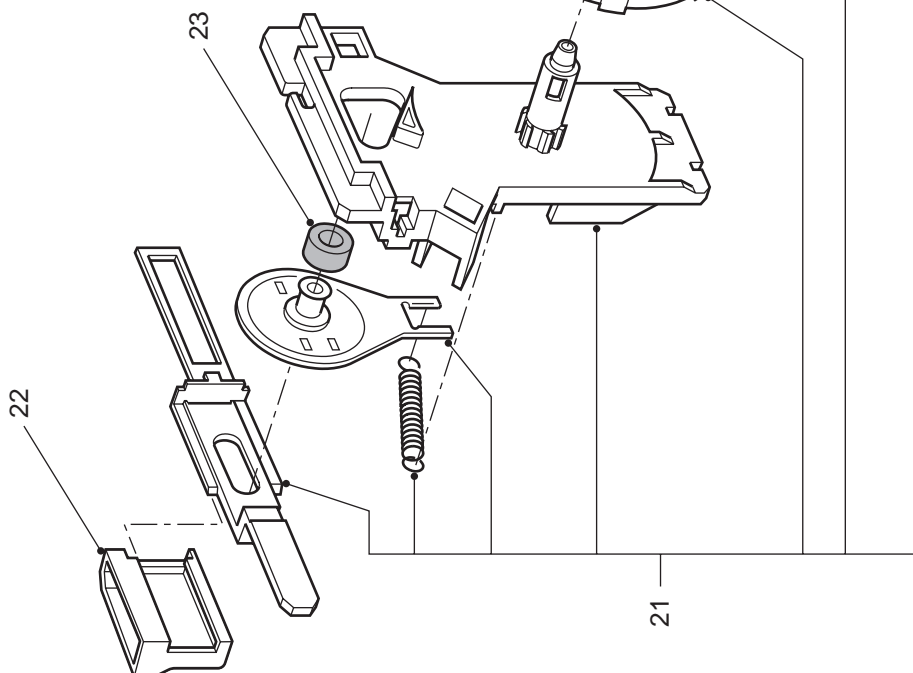
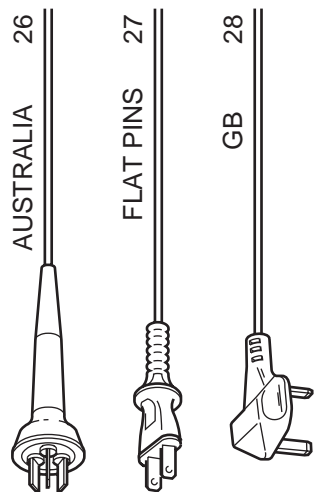
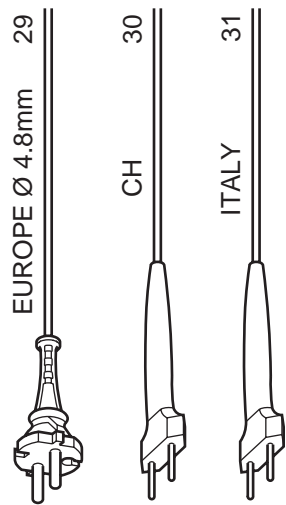


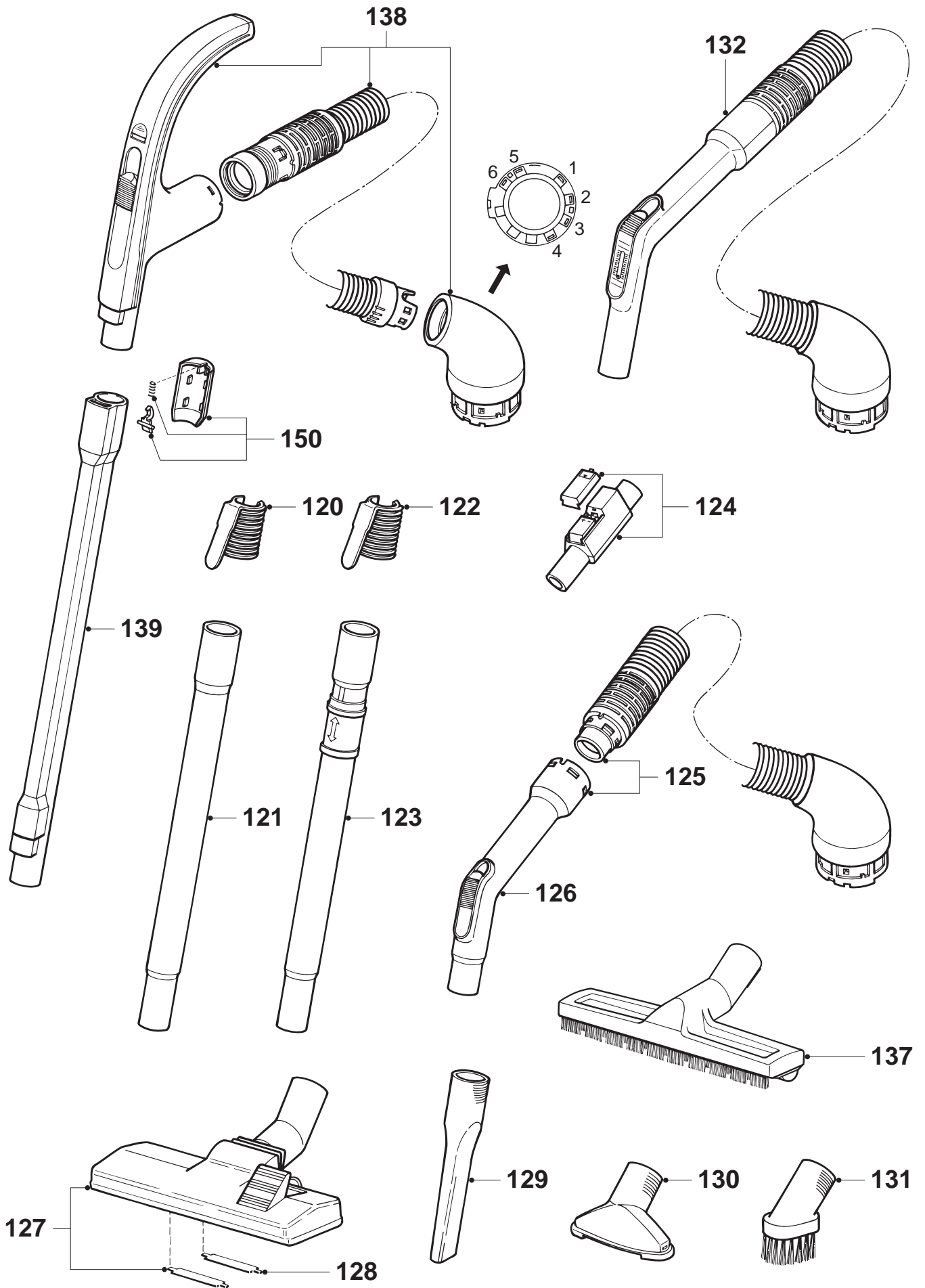
HR 8895

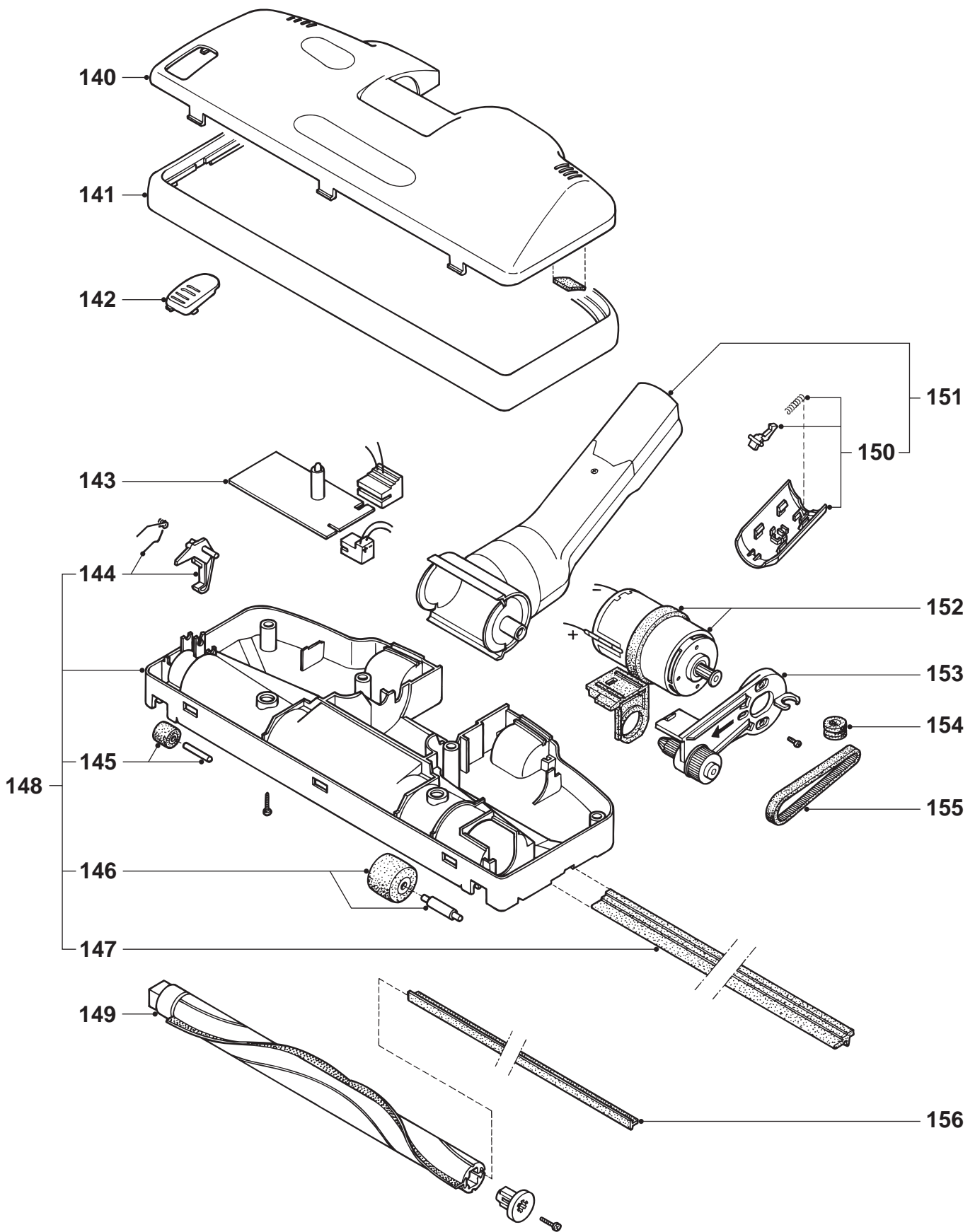


HR 8897
 HR 8899

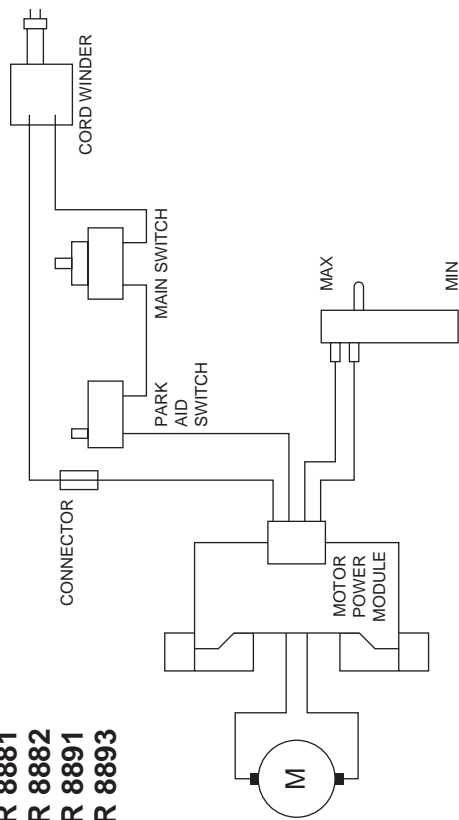




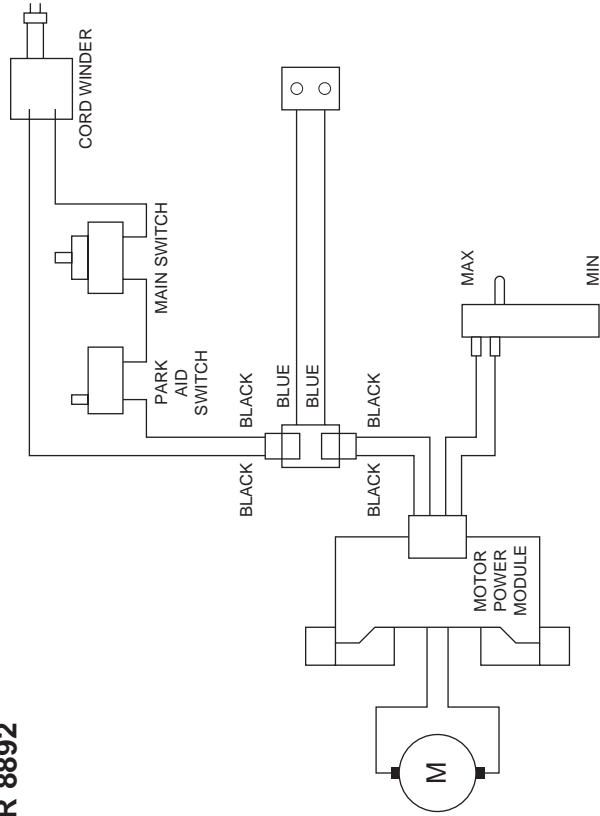




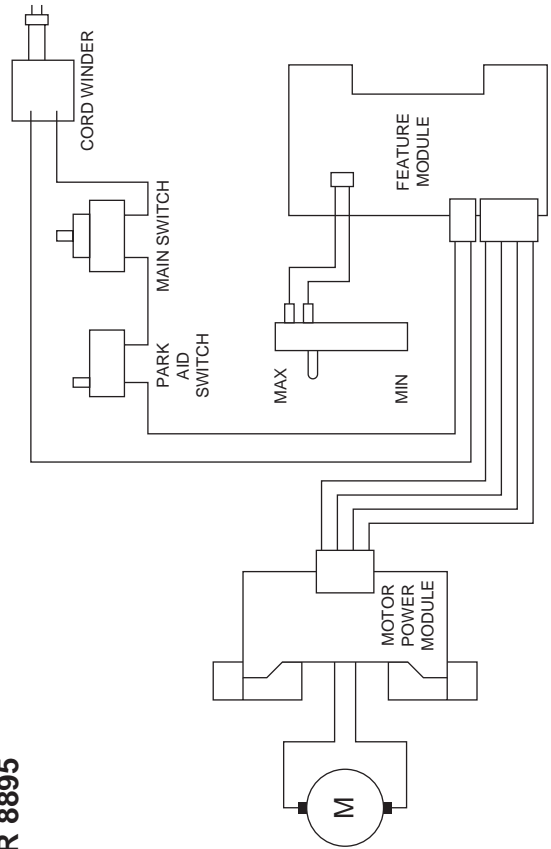
HR 8881
 HR 8882
 HR 8891
 HR 8893



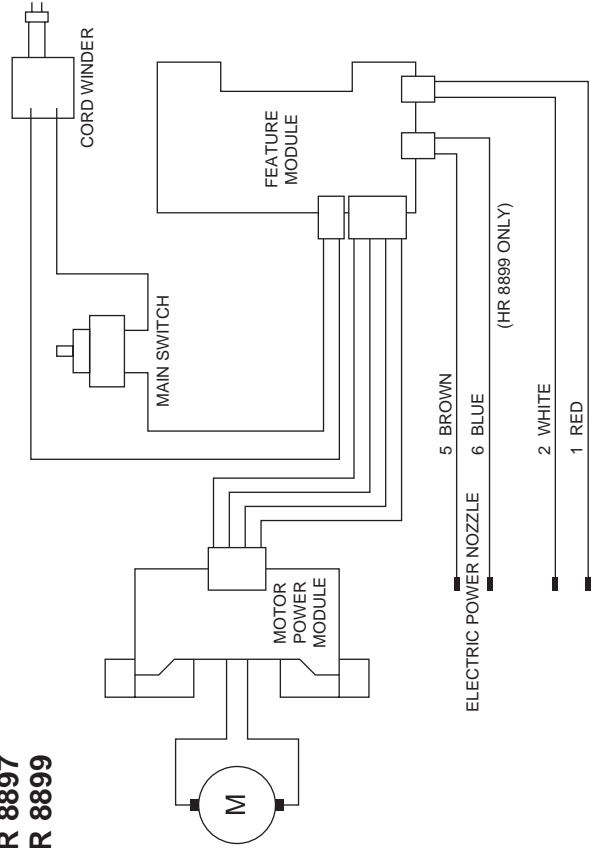
HR 8892



HR 8895



HR 8897
 HR 8899



5 BROWN
 6 BLUE
 2 WHITE
 1 RED
 (HR 8899 ONLY)
 ELECTRIC POWER NOZZLE