



# User Guide

**Manual del usuario / Mode d'emploi / Bedienungsanleitung**  
**- For Loc8tor models -**

## **Loc8tor:**

1 Loc8tor Handheld  
2 Mini Homing Tag  
1 Key ring loop / adhesive pack  
Batteries included

## **Loc8tor plus:**

1 Loc8tor Plus Handheld  
3 Mini Homing Tags  
1 Panic Homing Tag  
2 Key ring loop / adhesive Pack  
Batteries included

## **Index**

English.....	2-13
Español.....	14-27
Français.....	28-41
Deutsch.....	42-54

## INTRODUCTION

Welcome to Loc8tor, the great new product that helps you find your mislaid items and can even stop you losing them in the first place\*.

We've designed the Loc8tor to be versatile and easy to use, whether at home, out and about or on business. Please take a few minutes to read through this User Guide to help you get the most out of your purchase.

Loc8tor has been manufactured to quality standards to run trouble free and comes supplied with a 12 month warranty. Please visit our website at [www.loc8tor.com](http://www.loc8tor.com) for additional product information, contact details and frequently asked questions.

We'd love to hear from you, what you like about Loc8tor and any suggestions you have to improve it. E-mail us at [sales@loc8tor.com](mailto:sales@loc8tor.com) to have your say.

We hope you enjoy your new purchase and can now rest at ease, avoiding those frustrating moments of mislaying your important items.

With best wishes.



Anthony Richards  
Managing Director

**\*Loc8tor Plus** - Comes supplied with Locate and Alert modes. Helps you find misplaced items and allows invisible safety zones to be set around you to stop items going astray.

**Loc8tor** - Comes supplied with Locate mode. Helps you find misplaced items.

[www.loc8tor.com](http://www.loc8tor.com)    [www.loc8tor.co.uk](http://www.loc8tor.co.uk)

## CONTENTS

	<i>Page</i>
Quick Key Guide	3
Setting Up Your Loc8tor	4
Locate Mode - Find a mislaid item	5
Alert Mode* - Helps prevent items getting lost	6
Alert Activated	7
Mini Homing & Panic Homing Tags	8
Icons and Abbreviations	8
Menu Functions	9
Batteries	10
General Care	10
Changes	11
Warranty	11
Please Note	12-13

## QUICK KEY GUIDE

### Grey button

Shows list of registered Tags that can be located

### Red button

Turns ON or OFF all Alert enabled Tags (Loc8tor Plus only\*)

### Navigation ring

Moves cursor around screen: left, right, up, down

### White button

Selects item highlighted on screen

### Blue button

Loc8tor & Loc8tor Plus  
Shows Tag list and low battery warnings  
Loc8tor Plus  
Alert mode Tag settings

### Yellow button

To register a new Tag



## SETTING UP YOUR LOC8TOR

### 1. Insert batteries (2 x AAA)

With the Loc8tor buttons facing you push forwards and remove right hand side panel. Insert batteries (See diagram in battery compartment for correct insertion) and replace side panel.

Loc8tor has no ON or OFF button. To use press any button. It will automatically turn ON.



### 2. Register Tags

- Pull out white strip in Tag to activate batteries
- Tag beeps and red light flashes twice
- Place Tag next to Handheld making sure all other Tags have been moved more than an arms length away
- Press Yellow register button on the Handheld then select yes
- Follow on-screen instructions (see below Naming Tags)
- Repeat process for each new Tag

### 3. Naming your Tags

- Tags can be personalised with a name of your choice up to 10 characters long
- Use navigation ring to highlight letters
- Press White button to select
- Press OK to finish



### 4. Attach Tags

Depending on use Tags can be attached with adhesive strips, key ring loop or left loose.

#### Adhesive strips

Best used when attaching to a hard, flat surface. Peel off backing to attach. Sticky tabs are not permanent but increase their bond with time. Ideally leave for a Minimum of 10 minutes. Strongest bond after 24 hours.  
To remove insert flat tool under Tag and gently twist / prise off.


#### Key ring loop

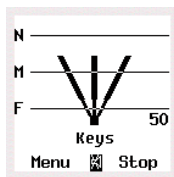
Best used to attach Tag to items such as key ring, bags and belt loop.  
Push loop through the Tag hole and then pull ring through the loop.



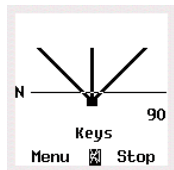
## LOCATE MODE - FIND A MISLAID ITEM

### LOST

- Slide up lid and press Grey button (top left) to see list of Tags that can be located
  - Scroll down and select item to be found with White button
  - Scan area slowly turning full 360° circle
  - Once circle completed go back to direction of strongest audio and visual signal
  - Walk in this direction - As you get nearer audio pitch and frequency of beeps increase, lines on screen extend and signal strength numbers increase (1)
  - Whenever in doubt, repeat 360° circle
  - When signal strength lines get close to the top of the screen Tag is close by
  - Try pressing select button on Handheld to Mute (  ) and listen for the Tag Beep
- When you are almost on top of Tag, screen changes to Zooming in mode to guide you right in (2)
- Select and press STOP when the item is found



(1)



(2)

### FOUND

#### TIPS

- Place the Tag on a surface and practice locating a few times to get a feel for how it works
- If you are ever unsure which direction to go in slowly repeat full 360° circle and then go in direction with the strongest signal strength
- Strongest signal is displayed when Handheld is pointing directly at Tag. Also try moving Handheld up and down as Tag could be upstairs or downstairs
- If you are close to a wall whilst getting a strong signal check the room next door
- If no signal is displayed try moving position to a different area



## ALERT MODE - HELPS PREVENT ITEMS GETTING LOST (Loc8tor Plus Model)

The Blue button (Tag Settings screen) controls your Alert settings. It enables you to decide what mode each Tag is in, Locate or Alert, and to set the distance for your required safety zone (Near, Medium or Far) for each Tag. Once you're happy with your settings simply press the Red button to activate Alert. All Tags with a (✓) will now automatically be in Alert mode.

### Setting up Alert (Blue Button - Tag Settings Screen)

- Attach Tag in or on item to be protected
- Press Blue button for Tag Settings screen. A list of all your Tags will be displayed

### Selecting the Safety Range (1)

- Scroll to the right hand column in line with selected Tag
- Use White button to select distance between Tag and your Handheld  
N = Near, M = Medium, F = Far

### Set Tag Mode

- Scroll to column with dash (-) next to the Tag name
- Press White button to make Tag alertable (✓)

Repeat this process for each Tag

### Using Alert Mode

- Press Red button to turn Alert mode ON or OFF for all Tags with (✓) in Tag settings screen
- The Tag will beep to confirm Alert mode is ON.

Your Tags are now in Alert. Should any Tag set in Alert mode go out of the preset safety zone the Loc8tor Plus will vibrate, set off an alarm and advise which Tag has gone astray

An **A** will appear in the bottom right hand corner when the Alert mode is on



(1)

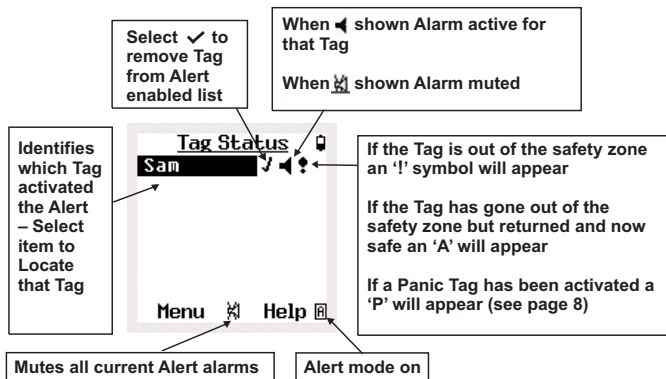
! Important Alert mode usability statement ! - A constant link between Handheld and Tag ensures you are notified immediately when Tags go out of range. However if used continuously will significantly reduce battery life. When not needed turn Alert mode off using Red button.

## ALERT ACTIVATED (Loc8tor Plus Model)

Should one of the Tagged items go out of your safety zone the Handheld will vibrate, let off an alarm and the 'Tag Status' screen will automatically appear.

The Tag Status lists which Tag/s have activated an Alert and whether the Tag is currently out of your designated safety zone. If a Tag has gone out of range but since returned to the safety zone, it also enables an Alert to be muted or removed from the Alert list altogether.

### Using the Tag Status Screen



To turn all Alerts OFF press the Red button.

To individually remove each Tag from the Alert enabled list select the (✓) and change to a (-).

*Note - To return to Tag Status screen go to Alert options on main menu → Tag Status*

## MINI HOMING & PANIC HOMING TAGS

Both Mini Homing and Panic Homing Tags can be used to Locate items and if used with the Loc8tor Plus model used in Alert mode.

The Panic Tag provides the additional function of enabling a child or dependant in need to activate an alert alarm to call for help.

### Activating a Panic Tag

For a Panic alarm to be activated, the Panic Tag must be set in Alert mode (- / ✓) in the Tag Settings screen (Blue button) and the Alert mode switched on (Red button)

To activate the Panic alarm, simply press the centre of the red button on the Panic Tag. So long as the Panic Tag is within the set safety zone the Alert Alarm will be activated - the Handheld will vibrate, let off an alarm and identify which Tag has activated the Panic alarm

Give or attach the Tag to the child / dependant as appropriate.



Homing Tag



Panic Tag

## ICONS AND ABBREVIATIONS

Throughout the menu system a variety of icons are used to inform on status. The screen shots shown contain icons you can expect to see whilst navigating



Look out for our Splash proof wrist strap that can help extend the range of your Tag when attached to a child / dependant



## MENU FUNCTIONS

- Locate** - Same function as Grey button. Shows list of Tags that can be located

### Alert Options (Loc8tor Plus model only) (1)

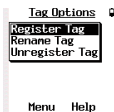
- Range Settings - Enables Near (N), Medium (M) and Far (F) range to be increased or decreased as required
- Tag Settings - Same function as Blue button
- Tag Status - Control screen informing which Tag has activated an Alert alarm and the Tags current status
- Alert ON / OFF - Same function as the Red button



(1)

### Tag Options (2)

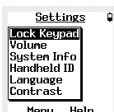
- Register Tag - Same function as Yellow button. Register a new Tag
- Rename Tag - Select Tag from list to be renamed. Enter in new name followed by OK
- Unregister Tag - Select Tag from list to be unregistered  
Place Tag next to Handheld and confirm Tag is to be unregistered  
This enables a Tag to be used on a different Loc8tor Handheld



(2)

### Settings (3)

- Lock Keypad - Protects against buttons being accidentally pressed  
To unlock press Red then Blue button
- Volume - Select to adjust volume whilst locating, for Alert alarm or the Keypad. Left / right on navigation ring decreases / increases volume. Up / Down on navigation ring switches between volume control and bottom menu
- System Info - System information screen
- Handheld ID. - It is recommend you keep a note of your Loc8tor Handheld ID  
Should your Handheld ever become lost you can re-program a new Handheld to re-register any of your existing Tags
- Language - Select preferred language
- Contrast - Enables screen contrast to be made lighter or darker



(3)

- Upgrade (4)** - Enables a Loc8tor Handheld to be upgraded to a Loc8tor Plus (activates Alert mode). Contact place of purchase or visit [www.Loc8tor.com/upgrade](http://www.Loc8tor.com/upgrade) for more details



(4)

- Help / Key Guide** - Quick guide to what each button does and the icons used  
Help button also appears at the bottom of selected screens

## BATTERIES

### Handheld

- To replace batteries use 2 x AAA 1.5 volt or equivalent (Also see Setting up your Loc8tor on page 4)
- A low battery icon will appear in the top right hand corner of the screen when Handheld batteries are running low. Batteries are able to be used until screen starts to fade.

Please Note - Battery life will vary depending on mode and frequency of use.



### Tags

- To change the batteries - there is a hole which you can thread the lanyard through. Put your thumb nail or other flat tool at this end into the split line (line going around the middle of the Tag). Keeping your thumb / flat tool in the split line move it around to the middle of the long side. The Tag will pop open.
- Replace with SR54 (silver oxide) 1.5v button cells or equivalent to provide best battery life, keeping the plus side face up nearest the lanyard hole.
- Replace the lid by putting one side in first then pushing shut.
- If batteries are correctly inserted Tag will beep when case is closed.
- If you locate a Tag and its battery is low a low Tag battery icon will appear in the Tag Settings screen (Blue button) on the very right hand side of the screen. The icon will appear in line with the Tag that needs to be changed. Replace Tag batteries when icon is displayed to ensure Tag does not become lost.

## GENERAL CARE

- The Loc8tor and Tags have not been designed to be waterproof. Please take care not to get wet.
- Never clean with water, detergent or cleaning agent - simply use clean, dry cloth.
- On the reverse of the Handheld lid are two black lines. These are aerisals and essential to the functioning of your Loc8tor. Take care not to scratch.
- Tag and Handheld operational temperature is between 0°C to + 55°C. Storage temperature is between - 10°C and + 60°C.

## CHANGES

The material in this User Guide is for information only and is subject to change without notice. Whilst reasonable efforts have been made in the preparation of these instructions to ensure its accuracy, Loc8tor Ltd. assumes no liability resulting from errors or omissions in this User Guide, or from the use of the information contained herein.

Loc8tor Ltd. reserves the right to make changes to the product design without reservation and without notification to its users.

### Terms & Conditions

Please contact place of purchase or Loc8tor website [www.Loc8tor.com](http://www.Loc8tor.com) for full Terms and conditions.

## WARRANTY

Loc8tor Ltd warrants to the original purchaser that this product shall be free from significant defects in material and workmanship for 1 year beginning on the date of purchase as shown on your receipt.

Should the product need to be returned it must be sent back to the original place of purchase to be processed. Proof of purchase must accompany the returned product. If purchased direct from Loc8tor Ltd. a returns authorisation number is required prior to the product being returned to us. Product must be returned by signed delivery in suitable protective packaging.

This warranty does not apply to any product that has been subject to abuse, misuse, negligence, tampering or has been modified in any way.

Without prejudice to your rights Loc8tor Ltd. may replace a defective product or issue a credit against future purchases.

No other warranties, express or implied are made. Loc8tor Ltd. shall not be liable for any special, incidental or consequential damages whether or not the purpose for which you purchased the product was made known to Loc8tor Ltd, the retailer or otherwise. Your statutory rights are not affected in any way

SEE PAGE 12 FOR 'PLEASE NOTE' POINTS

## PLEASE NOTE

- a. 183 metre / 600 feet range is based on clear line of sight. Actual range will vary depending on use, environment and location.
  - b. Loc8tor is not a toy and should only be used by adults or with parental supervision.
  - c. Locate mode has been designed to help find your possessions. It should not be relied on to find people.
  - d. Alert mode has only been designed to act as an aid to warn against items getting misplaced or stolen. It is not a replacement for parental supervision.
  - e. The Loc8tor Handheld works in one mode at a time. Whilst Locating an item Alert mode will be temporarily switched off.
  - f. When a Tagged item goes out of the Far range in Alert mode it may be out of range to locate.
  - g. Usage of the Panic Tag button is limited to approximately 1,000 presses.
  - h. The Loc8tor is intended to be used in accordance with instructions.
  - i. BEWARE OF CHOKING HAZARD – KEEP LOOSE TAGS OUT OF THE REACH OF YOUNG CHILDREN.
- 

HANDHELD  
FCC ID: TUW-LOH11  
IC: 6444A-LOH11

TAG  
FCC ID: TUW-LOT11  
IC: 6444A-LOT11



Designed in the UK. Made in China for Loc8tor Ltd in compliance with ISO 9001:2000 Certification

### Head Office

Loc8tor Ltd, Devonshire House, 404 – 406 Finchley Road, London, NW2 2HZ  
Customer Services UK: 0870 111 7777 Email: [sales@loc8tor.com](mailto:sales@loc8tor.com)  
[www.loc8tor.com](http://www.loc8tor.com) [www.loc8tor.es](http://www.loc8tor.es) [www.loc8tor.fr](http://www.loc8tor.fr) [www.loc8tor.de](http://www.loc8tor.de) [www.loc8tor.co.uk](http://www.loc8tor.co.uk)

THE ENTIRE CONTENTS OF THIS BROCHURE © 2006, LOC8TOR LTD.

## FCC STATEMENT

This equipment has been tested and found to comply with the limits for a Class B digital device, pursuant to part 15 of the FCC Rules. These limits are designed to provide reasonable protection against harmful interference in a residential installation. This equipment generates, uses and can radiate radio frequency energy and, if not installed and used in accordance with the instructions, may cause harmful interference to radio communications. However, there is no guarantee that interference will not occur in a particular installation. If this equipment does cause harmful interference to radio or television reception, which can be determined by turning the equipment off and on, the user is encouraged to try to correct the interference by one or more of the following measures:

- Reorient or relocate the receiving antenna.
- Increase the separation between the equipment and receiver.
- Consult the dealer or an experienced radio/TV technician for help.

**CAUTION** - Changes or modifications not expressly approved by Loc8tor Ltd can void the users authority to operate the Loc8tor.