

STRONG BEAM BAR USER MANUAL



Table of Contents

Introduction	3
Safety Instructions	3
Features	4
Product View	4
Mounting	5
Operation Instructions.....	5
▪ Menu Map	6
▪ DMX Mode	7
Mode 1: 9 DMX channels.....	7
Mode 2: 2 DMX channels.....	8
▪ Slave Mode	9
General Maintenance	10
Specifications	10

■ INTRODUCTION

Thank you for selecting the STRONG BEAM BAR . With motorized tilt moment and 8pcs high power 3W white LEDs, gives you ultra bright, to project on a wide area for enhancing your enviroment. Please read this user manual carefully and thoroughly before operation.

■ Unpacking

Carefully unpack the carton, check the contents to ensure that all parts are present, and have been received in good condition. Contact your supplier immediately and retain packing material for inspection if any part is missing or damaged.

The following items are included in the box:

- 1 x STRONG BEAM BAR
- 1 x Power cord with plug
- 1 x User Manual



Warning!!! To reduce the risk of fire, electric shock, or injury to persons, follow these important safety instructions:

■ Safety intructions

- This product is intended for indoor use only!
- Always turn off, unplug power and allow fixture to cool before servicing.
- Ensure that fixture is properly grounded.
- Please keep this User Guide for future consultation.
- Always make sure that you are connecting to the proper voltage and that the line voltage you are connecting to is not higher than that stated on decal or rear panel of the fixture.
- To prevent risk of fire or shock, do not expose fixture to rain or moisture.
- The unit must be installed in a location with adequate ventilation, at least 50cm from adjacent surfaces. Be sure no ventilation slots are blocked.
- Always disconnect from power before servicing or replacing fuse.
- Make sure power cord is never crimped or damaged.
- Do not look into the beam from a distance of less than 40 cm (16 inches).
- Do not stare into the beam for extended periods at a short distance.

■ FEATURES

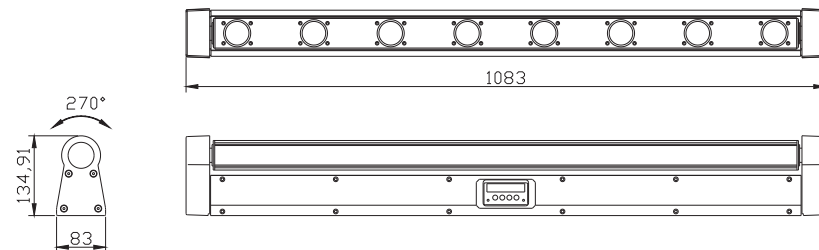
► Key features

- LED Refresh-rate 400Hz suitable for use in TV studio
- RGB color mixing
- 4 modes: Auto, Sound active, DMX, Program
- 2 DMX modes:9ch, 2ch
- 5 built-in programs
- Onboard programming functionality enables programming without external DMX controller
- Thermal management system ensures long life of LEDs
- Electronic protection against short circuit
- 3-pin or 5-pin XLR connectors
- Blue LCD display of 16 x 2 digits
- Power failure memory
- Set Slave ID

► Additional features

- Dimmer 0-100%
- Strobe 1-30 fps
- Power In/Out for daisy-chain
- Optical lens: 0°
- Quarter-turn fastener mounting points

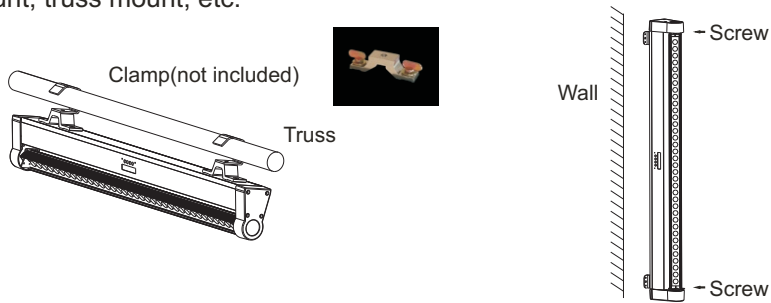
PRODUCT VIEW



■ SETUP

► MOUNTING

This fixture may be mounted in any safe position: floor stand up for lighting, wall mount, truss mount, etc.



IMPORTANT!!! Safety cables must always be used. The safety cable must be capable of holding 10 times the weight of the fixture.

► FIXTURE LINKING

To run your light shows of one or more fixtures using a DMX-512 controller or to run synchronized shows on two or more fixtures in master/slave operating mode, you need DMX cables to link the units from DMX IN to DMX OUT.

► AC POWER

The fixture is designed to work on 110V 60Hz or 230V 50Hz. Make sure you are connecting to the proper voltage which is printed on specification label on the unit.



Warning! All fixtures must be connected to circuits with a suitable Earth Ground.

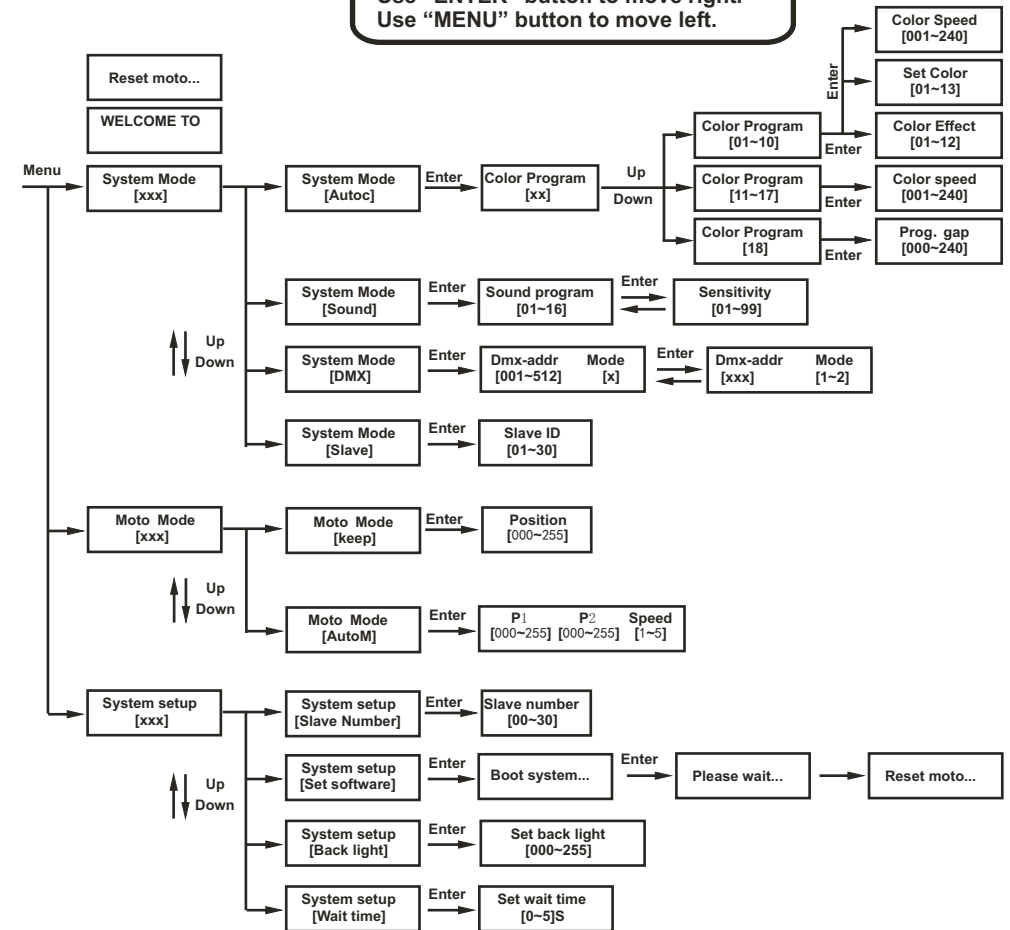
► OPERATION INSTRUCTIONS

4 working modes are at your choice: Auto, Sound, DMX, Slave. In Auto and Sound mode, multiple units can be linkable via master/slave to run a synchronal system.

1. Connect the fixture to main power and turn on power switch.
2. The fixture resets with noise (nomal). LCD display shows: Reset...
3. After system reset, LED display show: Welcome
4. Press MENU button to enter System mode or Motor mode.

■ Menu MAP

When navigating the menu:
Use "UP" button to move up.
Use "DOWN" button to move down.
Use "ENTER" button to move right.
Use "MENU" button to move left.



■ DMX MODE

In DMX mode, you have 2 modes to select according to programming requirement for your environment: 9ch, 2ch

DMX MODE1

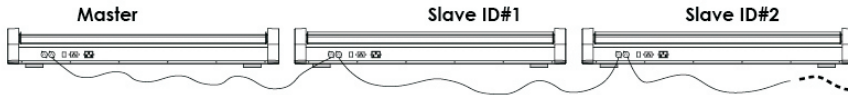
Channel	Level	Function
Ch1	0-255	No.1 LED Linear adjustment 0-100%
Ch2	0-255	No.2 LED Linear adjustment 0-100%
Ch3	0-255	No.3 LED Linear adjustment 0-100%
Ch4	0-255	No.4 LED Linear adjustment 0-100%
Ch5	0-255	No.5 LED Linear adjustment 0-100%
Ch6	0-255	No.6 LED Linear adjustment 0-100%
Ch7	0-255	No.7 LED Linear adjustment 0-100%
Ch8	0-255	No.8 LED Linear adjustment 0-100%
Ch9	0-255	Rotate from 0-270°

DMX MODE2

Channel	Level	Function	
Ch1	0-005	all led closed	
	006-015	all led open	
	016-025	No.1 led open	
	026-035	No.2 led open	
	036-045	No.3 led open	
	046-055	No.4 led open	
	056-065	No.5 led open	
	066-075	No.6 led open	
	076-085	No.7 led open	
	086-095	No.8 led open	
	096-105	No.1, No.8 led open	
	106-115	No.2, No.7 led open	
	116-125	No.3, No.6 led open	
	126-135	No.4, No.5 led open	
	136-145	No.1, No.3, No.5, No.7 led open	
	146-155	No.2, No.4, No.6, No.8 led open	
	156-175	from No.1 to No.8 led open one by one, speed slow to fast	
	176-195	from No.8 to No.1 led open one by one, speed slow to fast	
	196-215		No.1, No.8 to No.2, No.7 to No.3, No.6 to No.4, No.5; open one by one, speed slow to fast
			No.4, No.5 to No.3, No.6 to No.2, No.7 to No.1, No.8; open one by one, speed slow to fast
216-235		No.4, No.5 to No.3, No.6 to No.2, No.7 to No.1, No.8; open one by one, speed slow to fast	
236-255		all led shutter from slow to fast	
Ch2	0-255	Rotate from 0-270°	

MASTER SLAVE MODE

In this mode, one can run the whole system in synchronized effect. Maximum 31 pcs can be linked in a daisy chain as Master/Slave operating



1. One unit is to be set as Master and this Master unit needs to work under PROGRAM or Auto or Sound mode. Also, you need to set Slave Number for total number of Slave units. i.e., there are 5 Slave units (not including Master unit) in the daisy chain, then Slave Number is 5.
2. Other units are to be set in Slave mode and Slave ID is to be set for each Slave unit. The first Slave connected with the Master unit is Slave ID [1], the next Slave units are Slave ID [2], Slave ID [3], and so on.
3. Operate the Master unit in PROGRAM, Auto and Sound mode to run the whole system.

Note! After prolonged periods of operation, the fixture may reach high temperatures and dim due to thermal management. After a while of cool down, output will recover.

GENERAL MAINTENANCE

To maintain optimum performance fixtures should be cleaned frequently. Unplug fixture from power. Use a vacuum or air compressor and a soft brush to remove dust collected on external vents and internal components. Clean all glass gently when the fixture is cold with a mild solution of glass cleaner or Isopropyl Alcohol and a soft lint free cotton cloth or lens tissue.

IMPORTANT INFORMATION

To reduce the impact on human health and the environment, old appliances must be collected separately.



SPECIFICATIONS

WEIGHT & DIMENSIONS

Length	43.03 in (1,093 mm)
Width	5.20 in (132 mm)
Height	6.10in (155 mm)
Weight	18.26 lbs (8.3 kg)

POWER

AC Power	110V or 230V 50/60Hz AC (check spec label on product)
Power Consumption	120W Max.

LIGHT SOURCE

White LED	8 x 3W
Optical lens	0°