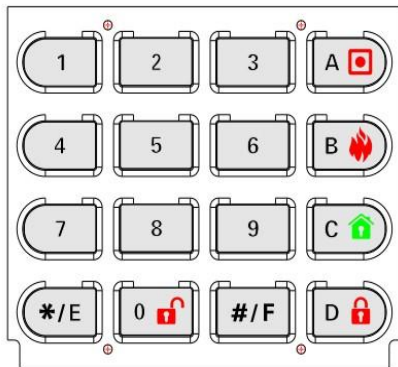
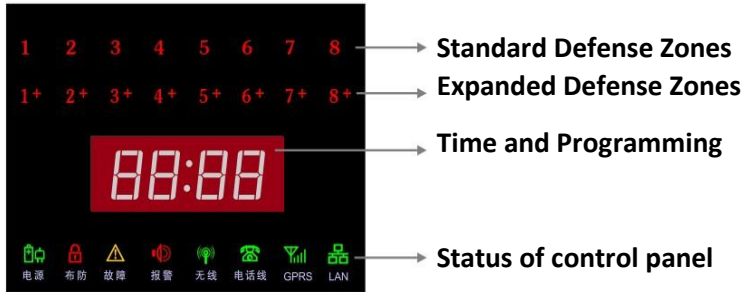


Basic Introduction of Display & Buttons

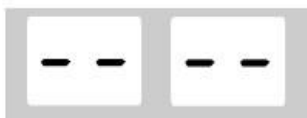


Buttons	Functions
A	Help, silent
B	Fire Alarm
C	Arm while at home
D	Arm while out home
0	Disarm
*/E	Enter programming
#/F	Exit programming

Lights	Status	Description
Defense Zones	ON	
	OFF	work well
	FLASH	Alarm
AC/DC	ON	AC/DC work well
	FLASH	AC or DC, error
Arming	ON	under Arm
	OFF	under Disarm
	FLASH	Timelag, exit Arming
Error	ON	Error
	OFF	work well
Alarming	FLASH	Alarming
	OFF	no Alarm
GSM	ON	GSM connecting well
	OFF	GSM error/not exist
Land line	ON	land line work well
	OFF	land line error/not exist
GPRS	ON	GPRS connecting well
	OFF	GPRS error
IP	ON	IP connecting well
	OFF	IP error/not exist

Notice: under programming, 0-9, A-D, *, # stands for 0~F (HEX)

Detailed Introduction of Display Panel



Disconnected or Error:
keypad and the control panel



Connected & Work well:
keypad and the control panel



Arm: 1 stands for NO. of users



Disarm: 1 stands for NO. of users



When standard zones alarm,
the first two digi will flash
e.g. NO.2 zone alarming

Error Info	Error Code	Recovery Code
AC	19	79
Back-up battery	29	69
Siren	39	89
Bus	49	B9
Land line	59	A9



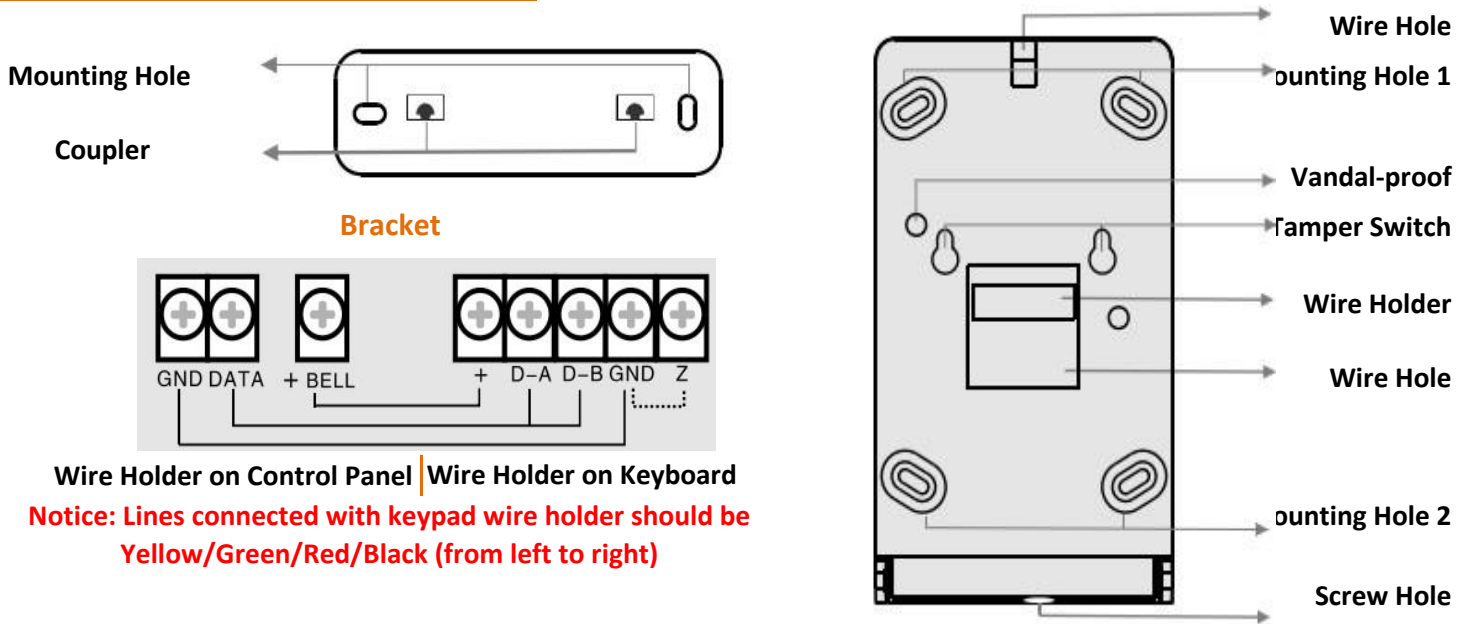
When expanded/wireless zones
alarm, the first two stands for NO. of
zones, & latter two stands for NO. of
modules

Programming Information

- Display '8 8': Enter the programming
 - Display '0 7': Wrong programming
 - Display 'X 8': Exit programming
- X=0~8

Sounds Information	one short 'DU...'	Valid Programming
	one long 'DU...'	Correct Programming
	three short 'DU...'	Wrong or Error Programming

Installation Information



1. Connect the keyboard with control panel via telephone line with four-core & crystal head;
2. 'Z' is a PTI port, functions can be programmed after triggered; Connect it with 'GND' while using; If no need, do not connect.

Operation Information

Emergency Help	Press 'A' for 3 seconds, or press 'A"A' within 3 seconds; Then alarm to the center & alarm light flashes	
Fire Alarm Help	Press 'B' for 3 seconds, or press 'B"B' within 3 seconds; Then fire alarm to the center & alarm light flashes	
Arm	Arm at home	Press 'C' for 3 seconds, or press 'C"C' within 3 seconds;
	Notice: Invalid process while access or perimeter zones are bypassed	
	Arm out home	Press 'D' for 3 seconds, or press 'D"D' within 3 seconds;
	Notice 1: all zones work well, system does timelag before exiting arming & sounds 'DU...DU...DU...'; Notice 2: if any zone doesn't work well, panel will display that zone, and sounds 'DU...DU...' with long interval; Then you can arm after trouble clearing, or force to alarm	
Disarm	[*]+[PWD]+[0#]/[*0#]; PWD default is '123456'; [0#] is suitable for the first PWD, [*0#] is suitable for other PWD.	
Password hostage for help	[*]+[PWD for help], use this when you have to disarm the system, but need to send 'help' to the alarm center/police	
	Notice: control panel will automatically generate the [PWD for help] e.g. operation PWD is '123456', 'PWD for help' is '123457'; if PWD is '123459', for help, it's '12345A'	