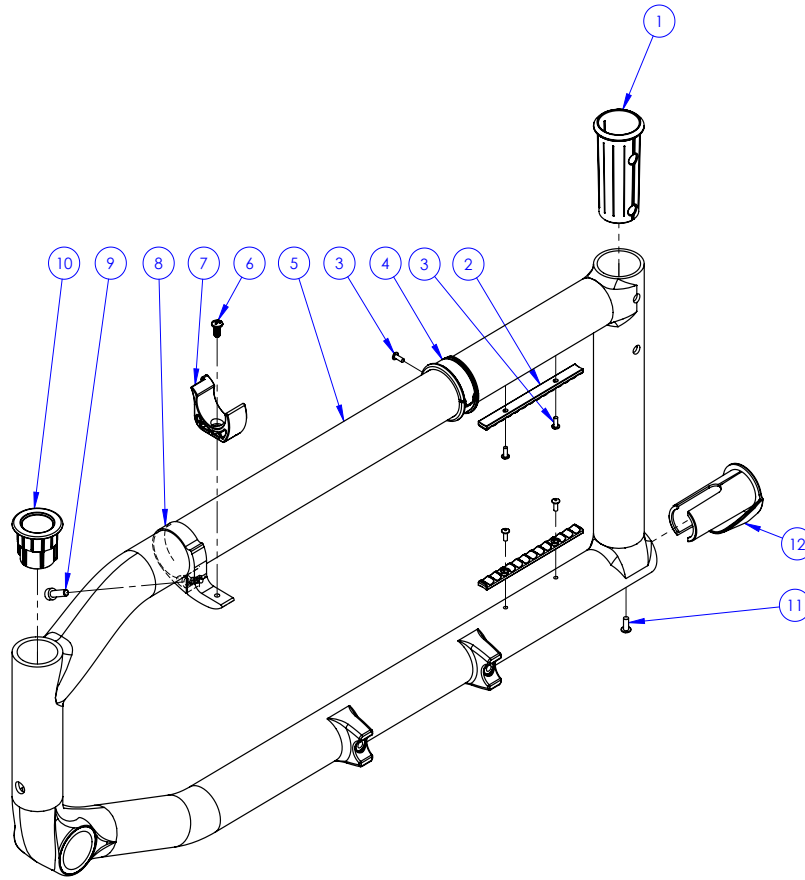




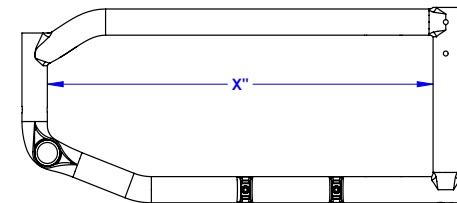
- FRAME - 3**
- CROSSBRACE ASSEMBLY - 4**
- CROSSBRACE FRONT/REAR - 5**
- CENTRAL SHAFT KIT - 6**
- BASE SHAFT KIT - 7**
- LINK KITS - 8**
- LINK DIMENSION TABLE - 9**
- REAR WHEEL MOUNTING PLATE - 10**
- AMPUTE AXLE PLATE - 11**
- BACK WHEELS - 12**
- HANDRIMS - 13**
- SPOKES GUARD - 14**
- TITRFRONT WHEEL ASSEMBLY - 15**
- CASTER LOCK - 16**
- FOOTRESTS - 17**
- FOOTRESTS - 18**
- ELEVATING LEGRESTS - 20**
- BACK RESTS / PUSH HANDLES - 21**
- DUO ARMREST - 22**
- ARMREST PIVOT POINT - 23**
- "I" ARMREST - 24**
- SIDEGUARD - 25**
- MUDGUARD - 26**
- "L" ARMREST - 27**
- BRAKES - 28**
- ANTI-TIPPERS - 29**





ITEM NO.	PARTNO	DESCRIPTION	QTY.
1	32060	LOWER BACK SLEEVE	1
2	11015	MOUNTING RAIL	2
3	99660	POP RIVET 3_32 D X .365 L X .126_250	5
4	12140	LINK GUIDE	1
6	90988	Metric JIS Pan Head Phillips Machine Screw M4 X 0.7 X 8mm	1
7	21023	H-BLOCK V2	1
8	11034	CLAMP H-BLOCK SEAT SUPPORT	1
9	90726	SOCKET CAP SCREW M4X0.7 X 14mm LONG, FULLY THREADED	1
10	11013	FOOTREST PIVOT SLEEVE	1
11	99661	POP RIVET 1_8 DIA X .328 LGHT (.126_187 GRIP)	1
12	11020	ANTI-TIPPER BUMPER SLEEVE CARBON FRAME	1
2,3,4,5,10,11,12	1000789	HELIO C2 15" RIGHT FRAME ASSEMBLY	1
2,3,4,5,10,11,12	1000790	HELIO C2 16" RIGHT FRAME ASSEMBLY	1
2,3,4,5,10,11,12	1000791	HELIO C2 17" RIGHT FRAME ASSEMBLY	1
2,3,4,5,10,11,12	1000792	HELIO C2 18" RIGHT FRAME ASSEMBLY	1
2,3,4,5,10,11,12	1000793	HELIO C2 19" RIGHT FRAME ASSEMBLY	1
2,3,4,5,10,11,12	1000794	HELIO C2 20" RIGHT FRAME ASSEMBLY	1
2,3,4,5,10,11,12	1000795	HELIO C2 21" RIGHT FRAME ASSEMBLY	1
2,3,4,5,10,11,12	1000796	HELIO C2 15" LEFT FRAME ASSEMBLY	1
2,3,4,5,10,11,12	1000797	HELIO C2 16" LEFT FRAME ASSEMBLY	1
2,3,4,5,10,11,12	1000798	HELIO C2 17" LEFT FRAME ASSEMBLY	1
2,3,4,5,10,11,12	1000799	HELIO C2 18" LEFT FRAME ASSEMBLY	1
2,3,4,5,10,11,12	1000800	HELIO C2 19" LEFT FRAME ASSEMBLY	1
2,3,4,5,10,11,12	1000801	HELIO C2 20" LEFT FRAME ASSEMBLY	1
2,3,4,5,10,11,12	1000802	HELIO C2 21" LEFT FRAME ASSEMBLY	1

HOW TO MEASURE YOUR FRAME

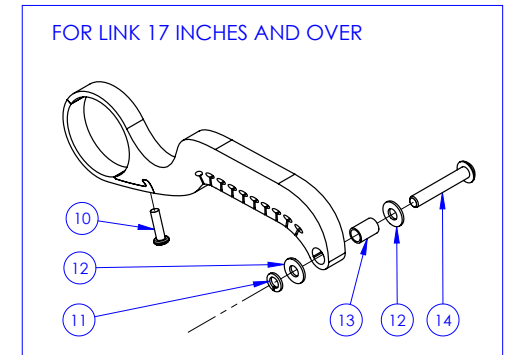
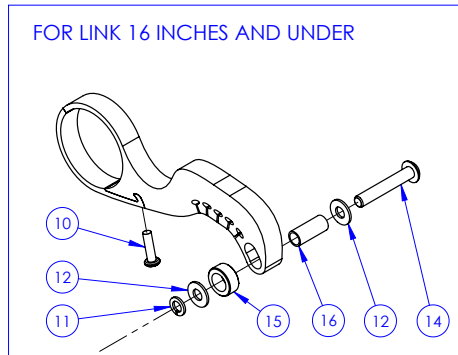
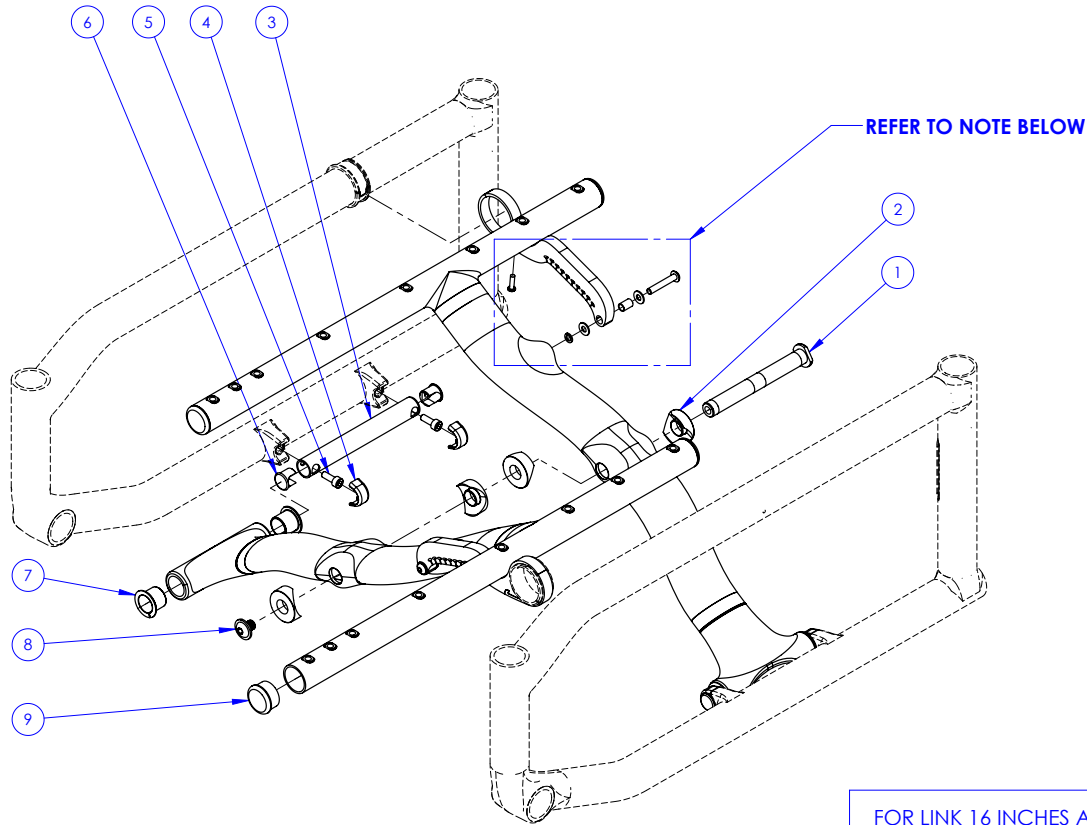


Ex: HELIO C2 X" LEFT FRAME ASSEMBLY

CROSSBRACE ASSEMBLY

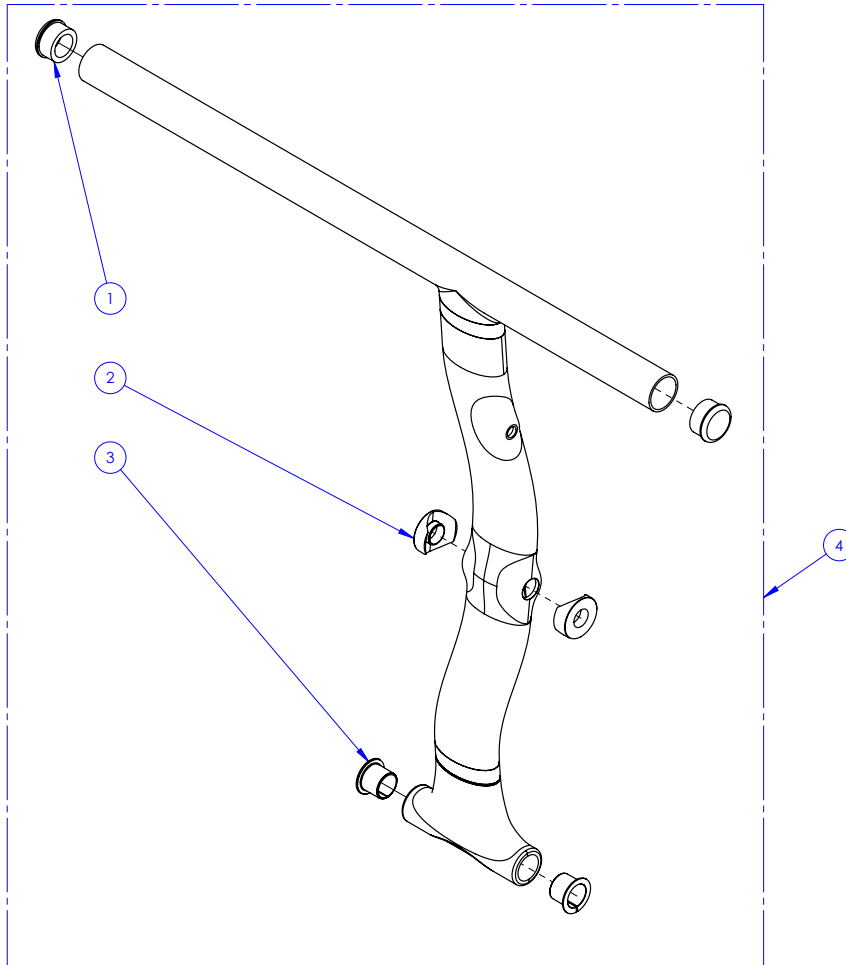
HELIO C2

ITEM NO.	PARTNO	DESCRIPTION	QTY.
1	12142	C2 XBRACE CENTER SHAFT	1
2	12145	C2 XBRACE CENTER PIVOT SLEEVE	4
3	12143	C2 XBRACE BASE SHAFT	2
4	12149	C2 XBRACE BASE PIVOT SHAFT PLASTIC CAP	4
5	90745	SOCKET CAP SCREW M5X0.8 X 14mm LONG, FULLY THREADED	4
6	12150	C2 XBRACE BASE PIVOT SHAFT ALU PLUG	4
7	12006	C2 XBRACE BASE PIVOT SLEEVE	4
8	90994	FLANGE BUTTON HEAD CAP SCREW, M8X.8 X 10mm	1
9	99704	CAP 1 IN CARBON	4
10	99000	SCREW PHILLIPS PAN HD #6-32 X 1/2	3
11	99598	LOCKWASHER #10 (.062 WIDE X .047 THK)	3
12	99550	WASHER #10 .200 ID X 7_16 OD X .037 THK	6
13	99600	SPACER M5 BOLT, 10MM LG, 0.7MM WALL THK	2
14	90651	BUTTON HEAD CAP SCREW M5X0.8 X 30mm LONG, FULLY THREADED	3
15	22028	CASTER SPACER SMALL	2
16	99605	SPACER M5 BOLT, 16MM LG, 0.7MM WALL THK	2



CROSSBRACE FRONT/REAR

HELIO C2



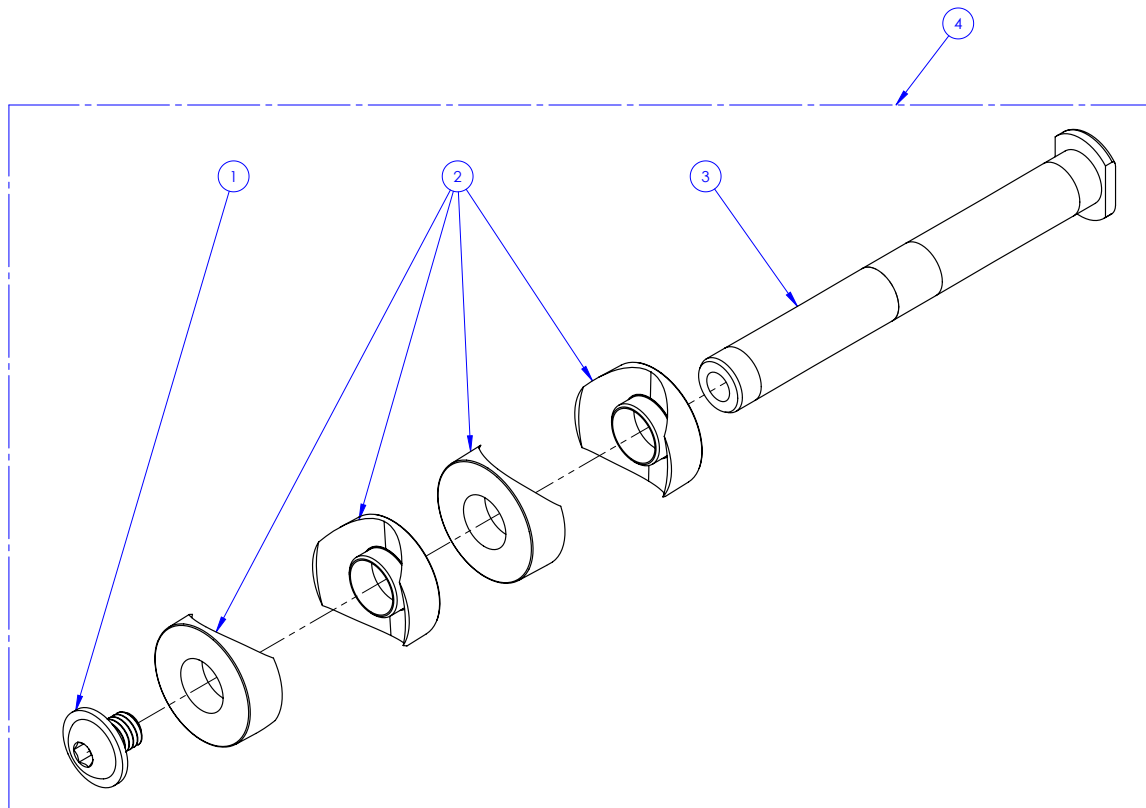
ITEM NO.	PARTNO	DESCRIPTION	QTY.
1	99704	CAP 1 IN CARBON	2
2	12145	C2 XBRACE CENTER PIVOT SLEEVE	2
3	12006	C2 XBRACE BASE PIVOT SLEEVE	2
4a	1000541	HELIO C2 12" FRONT XBRACE ASSEMBLY	1
4b	1000542	HELIO C2 13" FRONT XBRACE ASSEMBLY	1
4c	1000543	HELIO C2 14" FRONT XBRACE ASSEMBLY	1
4d	1000544	HELIO C2 15" FRONT XBRACE ASSEMBLY	1
4e	1000545	HELIO C2 16" FRONT XBRACE ASSEMBLY	1
4f	1000546	HELIO C2 17" FRONT XBRACE ASSEMBLY	1
4g	1000547	HELIO C2 18" FRONT XBRACE ASSEMBLY	1
4h	1000548	HELIO C2 19" FRONT XBRACE ASSEMBLY	1
4i	1000549	HELIO C2 20" FRONT XBRACE ASSEMBLY	1
4j	1000552	HELIO C2 12" REAR XBRACE ASSEMBLY	1
4k	1000553	HELIO C2 13" REAR XBRACE ASSEMBLY	1
4l	1000554	HELIO C2 14" REAR XBRACE ASSEMBLY	1
4m	1000555	HELIO C2 15" REAR XBRACE ASSEMBLY	1
4n	1000556	HELIO C2 16" REAR XBRACE ASSEMBLY	1
4o	1000557	HELIO C2 17" REAR XBRACE ASSEMBLY	1
4p	1000558	HELIO C2 18" REAR XBRACE ASSEMBLY	1
4q	1000559	HELIO C2 19" REAR XBRACE ASSEMBLY	1
4r	1000560	HELIO C2 20" REAR XBRACE ASSEMBLY	1

SPECIFY TOP TUBE LENGTH AND XBRACE DIMENSION DEPENDING ON ACTUAL WHEELCHAIR LENGTH AND WIDTH

CENTRAL SHAFT KIT

HELIO C2

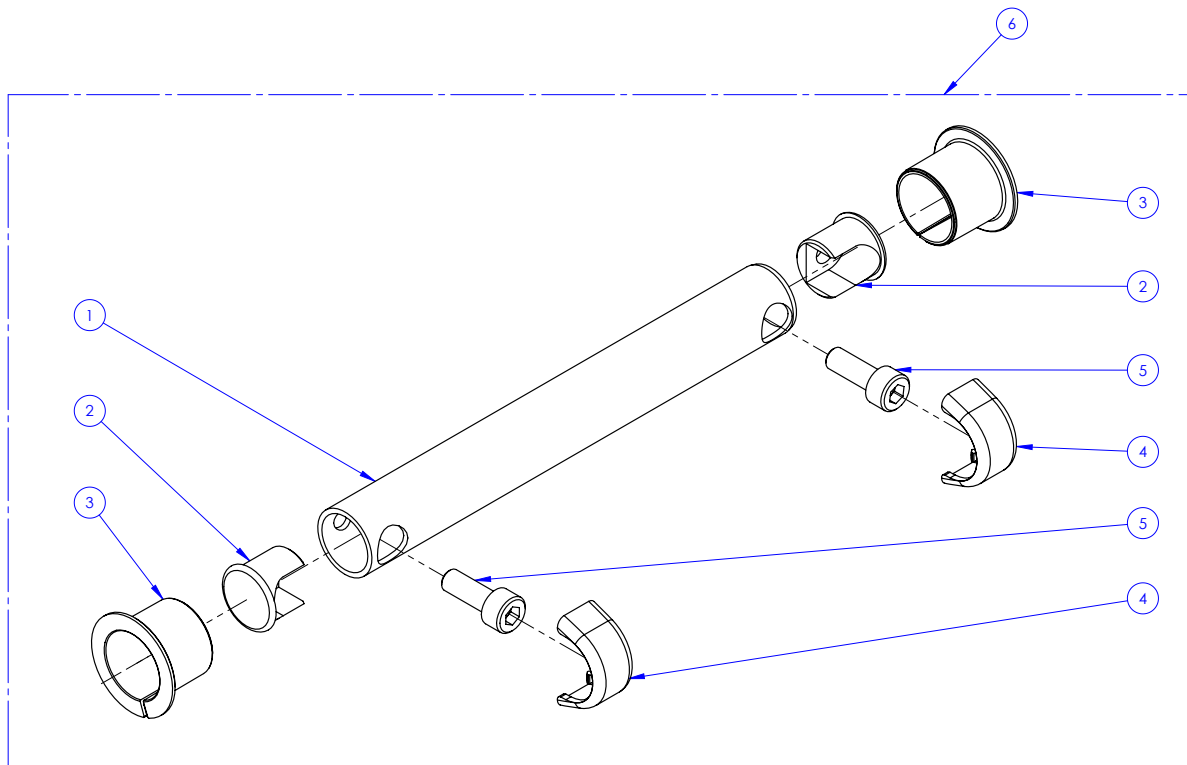
ITEM NO.	PARTNO	DESCRIPTION	QTY.
1	90994	FLANGE BUTTON HEAD CAP SCREW, M8X.8 X 10mm	1
2	12145	C2 XBRACE CENTER PIVOT SLEEVE	4
3	12142	C2 XBRACE CENTER SHAFT	1
4	1000563	HELIO C2 XBRACE CENTRAL SHAFT ASSEMBLY	1



BASE SHAFT KIT

HELIO C2

ITEM NO.	PARTNO	DESCRIPTION	QTY.
1	12143	C2 XBRACE BASE SHAFT	1
2	12150	C2 XBRACE BASE PIVOT SHAFT ALU PLUG	2
3	12006	C2 XBRACE BASE PIVOT SLEEVE	2
4	12149	C2 XBRACE BASE PIVOT SHAFT PLASTIC CAP	2
5	90745	SOCKET CAP SCREW M5X0.8 X 14mm LONG, FULLY THREADED	2
6	1000564	HELIO C2 XBRACE BASE SHAFT ASSEMBLY	1

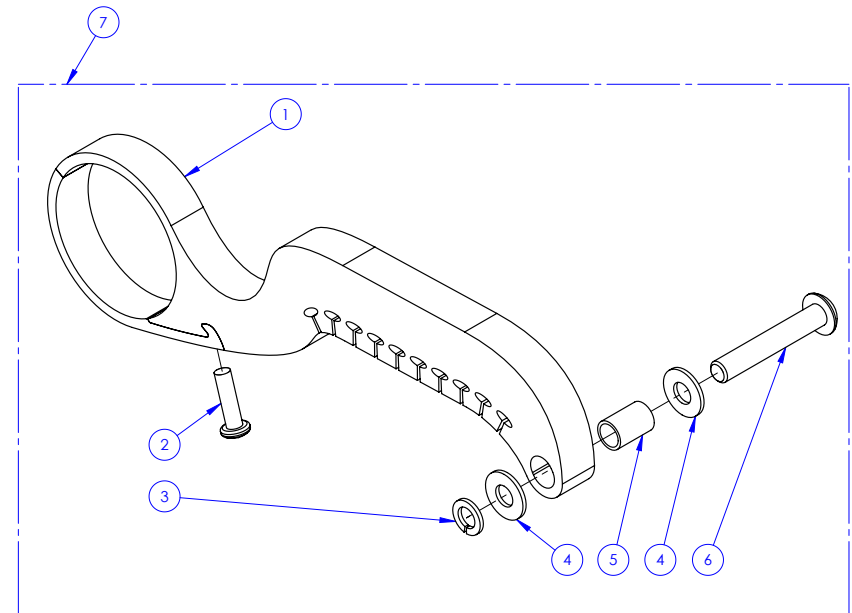
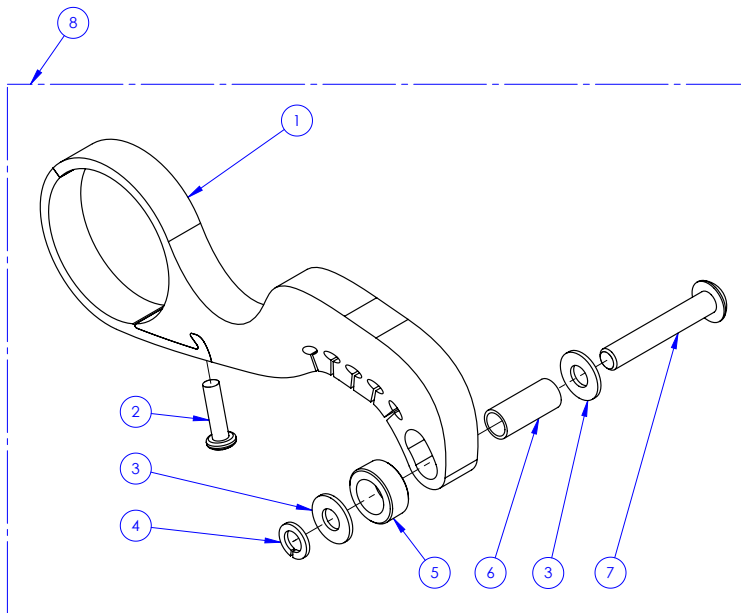


LINK KITS

HELIO C2

ITEM NO.	PARTNO	DESCRIPTION	QTY.
1a	12152	LINK 12"	1
1b	12153	LINK 13"	1
1c	12154	LINK 14"	1
1d	12155	LINK 15"	1
1e	12156	LINK 16"	1
2	99000	SCREW PHILLIPS PAN HD #6-32 X 1/2	1
3	99550	WASHER #10 .200 ID X 7_16 OD X .037 THK	2
4	99598	LOCKWASHER #10 (.062 WIDE X .047 THK)	1
5	22028	CASTER SPACER SMALL	1
6	99605	SPACER M5 BOLT, 16MM LG, 0.7MM WALL THK	1
7	90651	BUTTON HEAD CAP SCREW M5X0.8 X 30mm LONG, FULLY THREADED	1
8a	1000576	HELIO C2 12" LINK ASSEMBLY	1
8b	1000577	HELIO C2 13" LINK ASSEMBLY	1
8c	1000578	HELIO C2 14" LINK ASSEMBLY	1
8d	1000579	HELIO C2 15" LINK ASSEMBLY	1
8e	1000580	HELIO C2 16" LINK ASSEMBLY	1

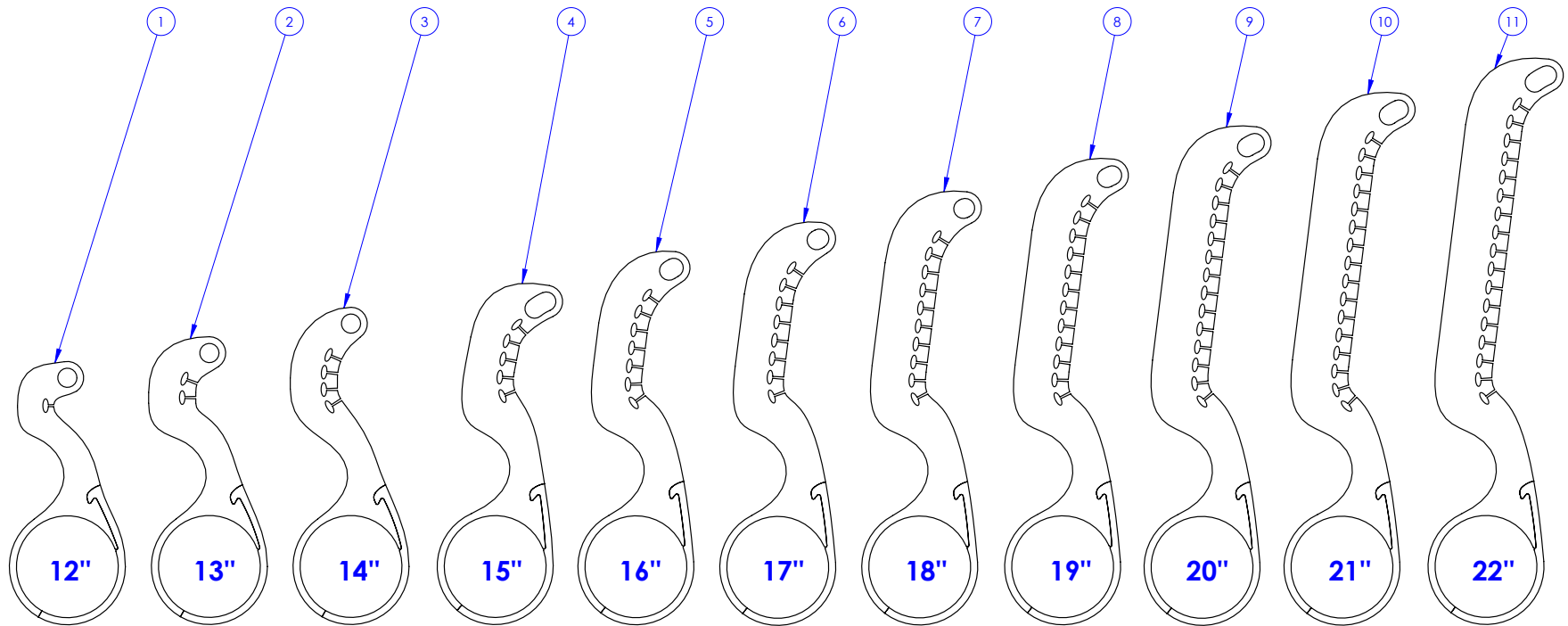
ITEM NO.	PARTNO	DESCRIPTION	QTY.
1a	12157	LINK 17"	1
1b	12158	LINK 18"	1
1c	12159	LINK 19"	1
1d	12160	LINK 20"	1
1e	12161	LINK 21"	1
1f	12162	LINK 22"	1
2	99000	SCREW PHILLIPS PAN HD #6-32 X 1/2	1
3	99598	LOCKWASHER #10 (.062 WIDE X .047 THK)	1
4	99550	WASHER #10 .200 ID X 7_16 OD X .037 THK	2
5	99600	SPACER M5 BOLT, 10MM LG, 0.7MM WALL THK	1
6	90651	BUTTON HEAD CAP SCREW M5X0.8 X 30mm LONG, FULLY THREADED	1
7a	1000581	HELIO C2 17" LINK ASSEMBLY	1
7b	1000582	HELIO C2 18" LINK ASSEMBLY	1
7c	1000583	HELIO C2 19" LINK ASSEMBLY	1
7d	1000584	HELIO C2 20" LINK ASSEMBLY	1
7e	1000585	HELIO C2 21" LINK ASSEMBLY	1
7f	1000586	HELIO C2 22" LINK ASSEMBLY	1



LINK DIMENSION TABLE

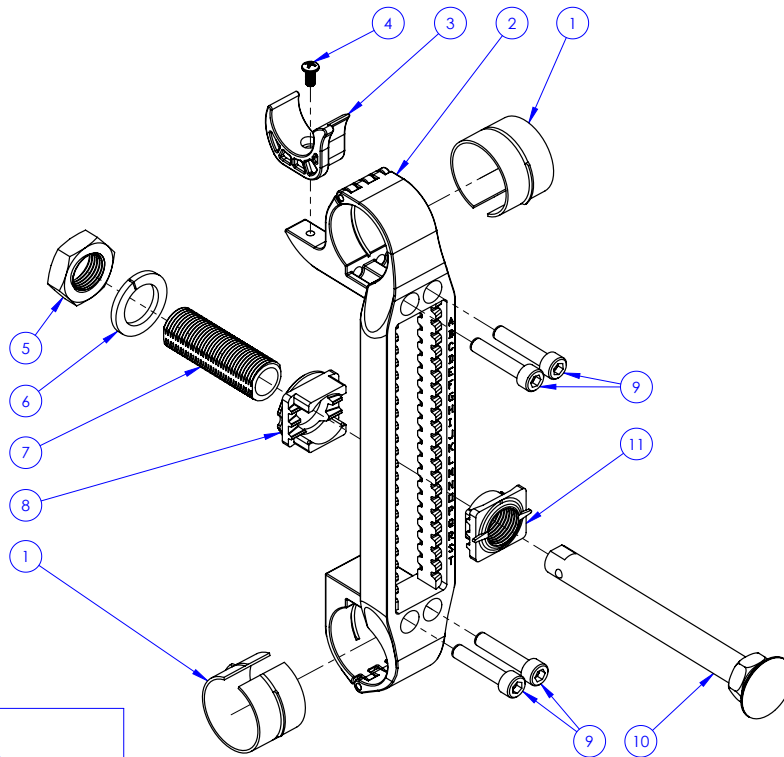
HELIO C2

ITEM NO.	PARTNO	DESCRIPTION	QTY.
1	12152	LINK 12"	1
2	12153	LINK 13"	1
3	12154	LINK 14"	1
4	12155	LINK 15"	1
5	12156	LINK 16"	1
6	12157	LINK 17"	1
7	12158	LINK 18"	1
8	12159	LINK 19"	1
9	12160	LINK 20"	1
10	12161	LINK 21"	1
11	12162	LINK 22"	1



REAR WHEEL MOUNTING PLATE

HELIO C2

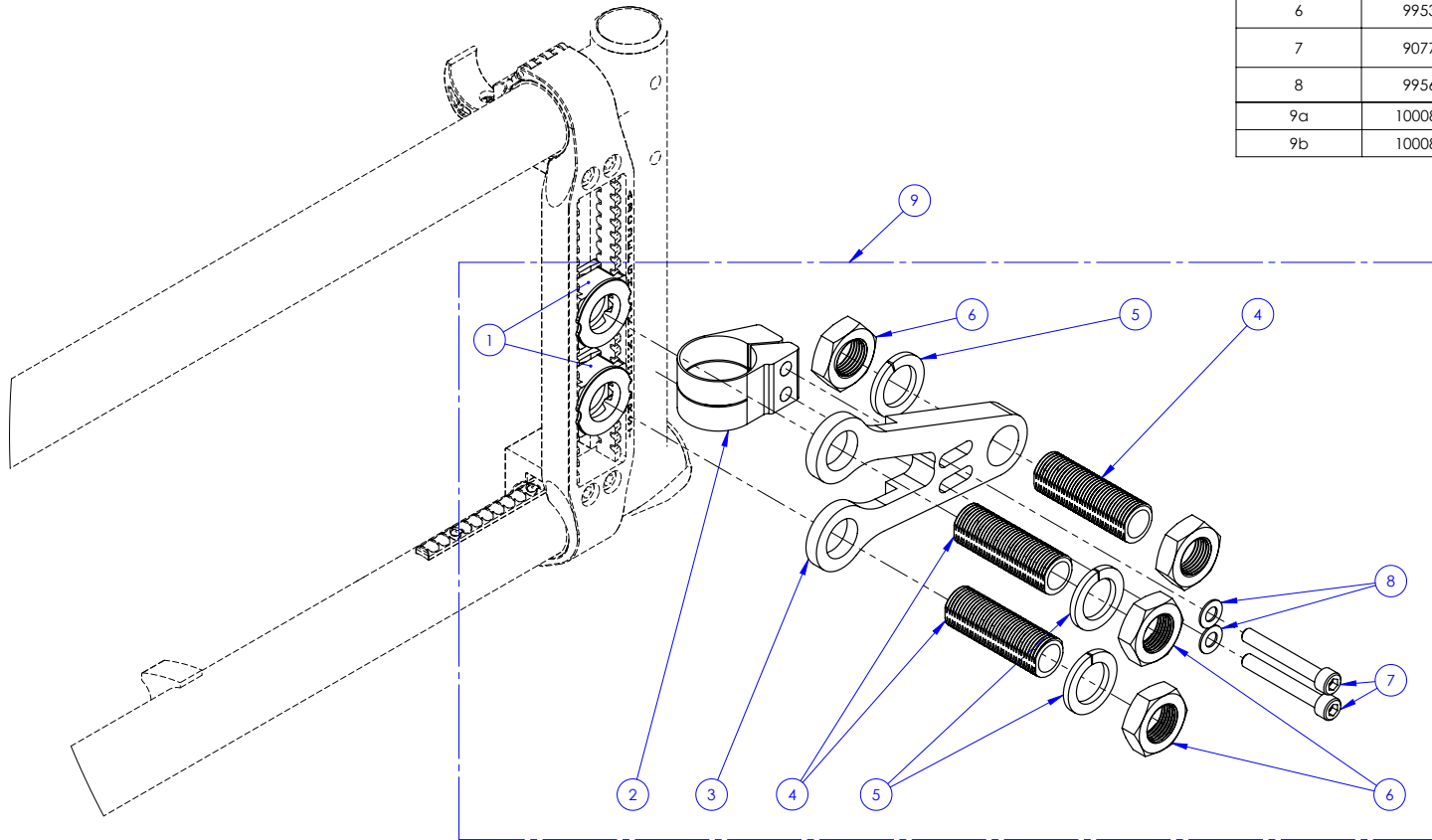


ITEM NO.	PARTNO	DESCRIPTION	QTY.
1	21024	PLASTIC SLEEVE	2
2	21016	MOUNTING PLATE	1
3	21023	H-BLOCK V2	1
4	90988	Metric JIS Pan Head Phillips Machine Screw M4 X 0.7 X 8mm	1
5	99536	NUT M18X1.5	1
6	99597	LOCK WASHER M18 X 1.5	1
7a	21008	0° BUSHING	1
7b	21009	3° BUSHING	1
8a	21020	FACE PLATE 0° V2	1
8b	21022	FACE PLATE 3° V2	1
9	90774	SOCKET CAP SCREW M6X1 X 30mm LONG, FULLY THREADED	4
10	21014	QUICK RELEASE	1
11a	21019	POSITIONING NUT 0° V2	1
11b	21021	POSITIONING NUT 3° V2	1
12	99530	NYLOCK JAM NUT 1_2-13 (3_4 AF X 5_16 THK)	1
13	99595	WASHER 1_2, 17_32 ID X 7_8 OD X .032 THK	2
14	99352	HEX SCREW 1/2-13 x 4 1/2"	1
5,6,7a,8a,11a	1000686	V2 0° BUSHING KIT	1
5,6,7b,8a,11a	1000687	V2 3° BUSHING KIT	1
5,6,7b,8b,11b	1000688	V2 6° BUSHING KIT	1

AMPUTEE AXLE PLATE

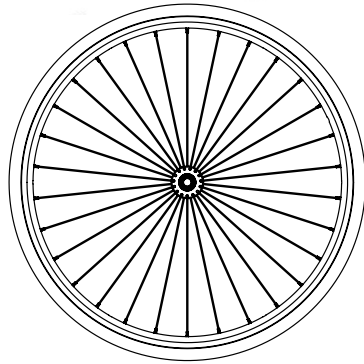
HELIO C2

ITEM NO.	PARTNO	DESCRIPTION	QTY.
1	21508	V2 0° BUSHING KIT	2
2	51119	UNIVERSAL 1.25IN ALU CLAMP	1
3a	21026	LEFT AMPUTE PLATE V2	1
3b	21025	RIGHT AMPUTE PLATE V2	1
4	21008	0° BUSHING	3
5	99597	LOCK WASHER M18 X 1.5	3
6	99536	NUT M18X1.5	4
7	90777	SOCKET CAP SCREW M6X1 X 45mm LONG, 24mm THREADED	2
8	99560	WASHER 1/4 17/64 ID X 1/2 OD X .032 THK	2
9a	1000852	RIGHT AMPUTE PLATE V2 ASSEMBLY	1
9b	1000853	LEFT AMPUTE PLATE V2 ASSEMBLY	1

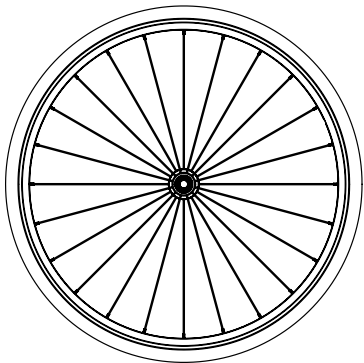




1



2



3

REAR WHEELS

ITEM NO.	PARTNO	DESCRIPTION
1	21106	22" MAG WHEEL
1	21107	24" MAG WHEEL
2	21110	22" NEWTON STANDARD SPOKE WHEEL
2	21111	24" NEWTON STANDARD SPOKE WHEEL
3	21113	20" NEWTON INFINITY
3	21114	22" NEWTON INFINITY
3	21115	24" NEWTON INFINITY
3	21116	25" NEWTON INFINITY
3	21117	26" NEWTON INFINITY
-	21 126	22" SPINERGY LX
-	21 127	24" SPINERGY LX
-	21 128	25" SPINERGY LX
-	21 129	26" SPINERGY LX
-	21 136	22" SPINERGY SPOX
-	21 137	24" SPINERGY SPOX
-	21 138	25" SPINERGY SPOX
-	21 139	26" SPINERGY SPOX

TIRES

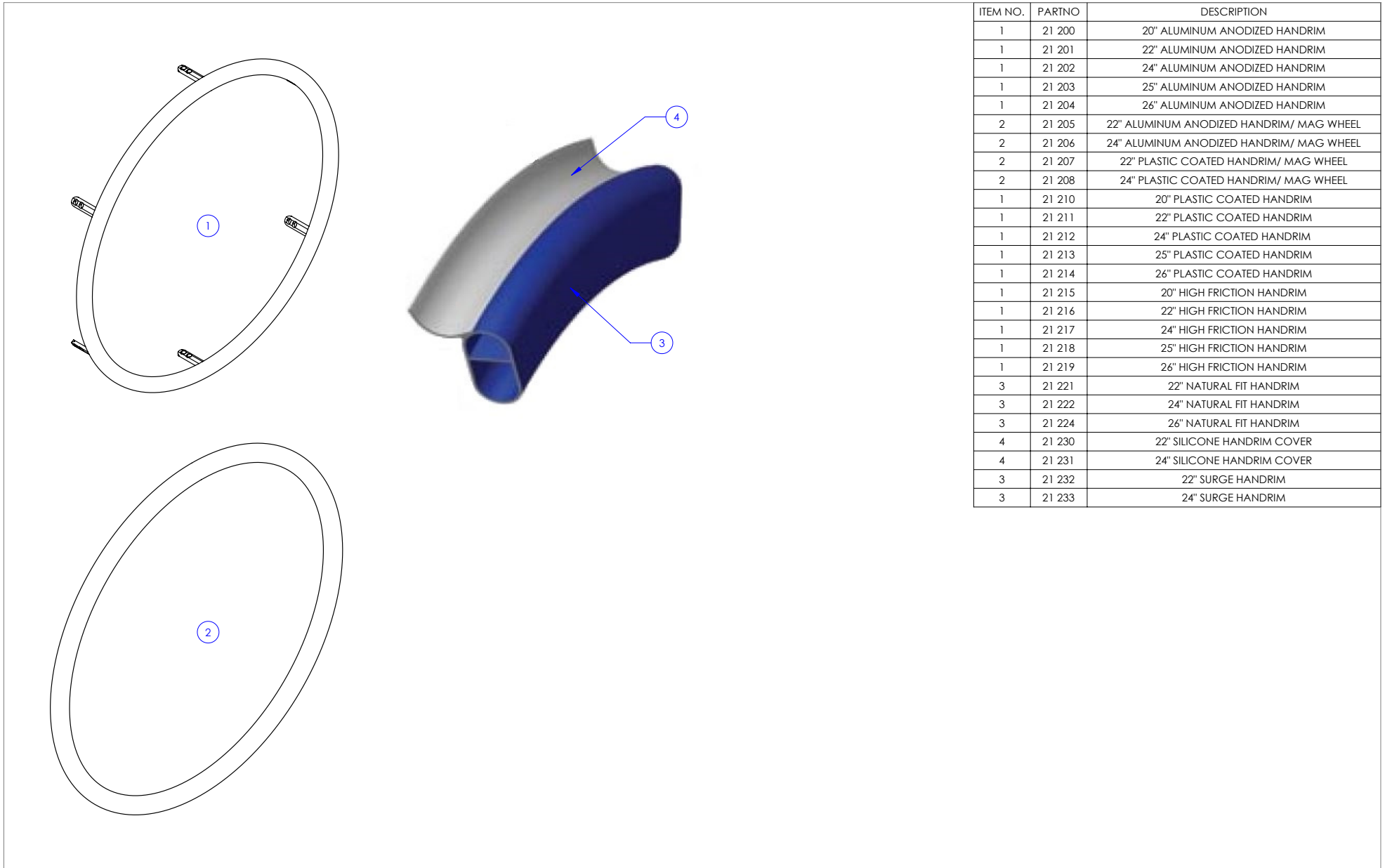
PARTNO	DESCRIPTION
21 305	20"x1" HP TIRE IRONCAP
21 306	22"x1" HP TIRE IRONCAP
21 307	24"x1" HP TIRE IRONCAP
21 308	25"x1" HP TIRE IRONCAP
21 309	26"x1" HP TIRE IRONCAP
21 313	24"x1" HP TIRE MARATHON PLUS
21 315	20"x1 1/8" PNEUMATIC TIRE
21 316	22"x1 1/8" PNEUMATIC TIRE
21 317	24"x1 1/8" PNEUMATIC TIRE
21 318	25"x1 1/8" PNEUMATIC TIRE
21 319	26"x1 1/8" PNEUMATIC TIRE
21 322	24"x1 1/8" KOURIER TIRE
21 324	26"x1 1/8" KOURIER TIRE
21 356	22"X1" SOFT URETHANE SHOX HP TIRE
21 357	24"X1" SOFT URETHANE SHOX HP TIRE
21 358	25"X1" SOFT URETHANE SHOX HP TIRE
21 359	26"X1" SOFT URETHANE SHOX HP TIRE
21 365	20"X1 1/8" SOFT URETHANE TIRE
21 366	22"X1 1/8" SOFT URETHANE TIRE
21 367	24"X1 1/8" SOFT URETHANE TIRE
21 391	22" PYRAMID - HARD URETHANE TIRE
21 392	24" PYRAMID - HARD URETHANE TIRE

TUBES

PARTNO	DESCRIPTION
21 250	20"x1" TUBE
21 251	22"x1" TUBE
21 252	24"x1" TUBE
21 253	25"x1" TUBE
21 254	26"x1" TUBE
21 255	20"x1 1/8" TUBE
21 256	22"x1 1/8" TUBE
21 257	24"x1 1/8" TUBE
21 259	26"x1 1/8" TUBE
21065	RIM TAPE 20-22"
21066	RIM TAPE 24"
21067	RIM TAPE 25"
21068	RIM TAPE 26"

HANDRIMS

HELIO C2

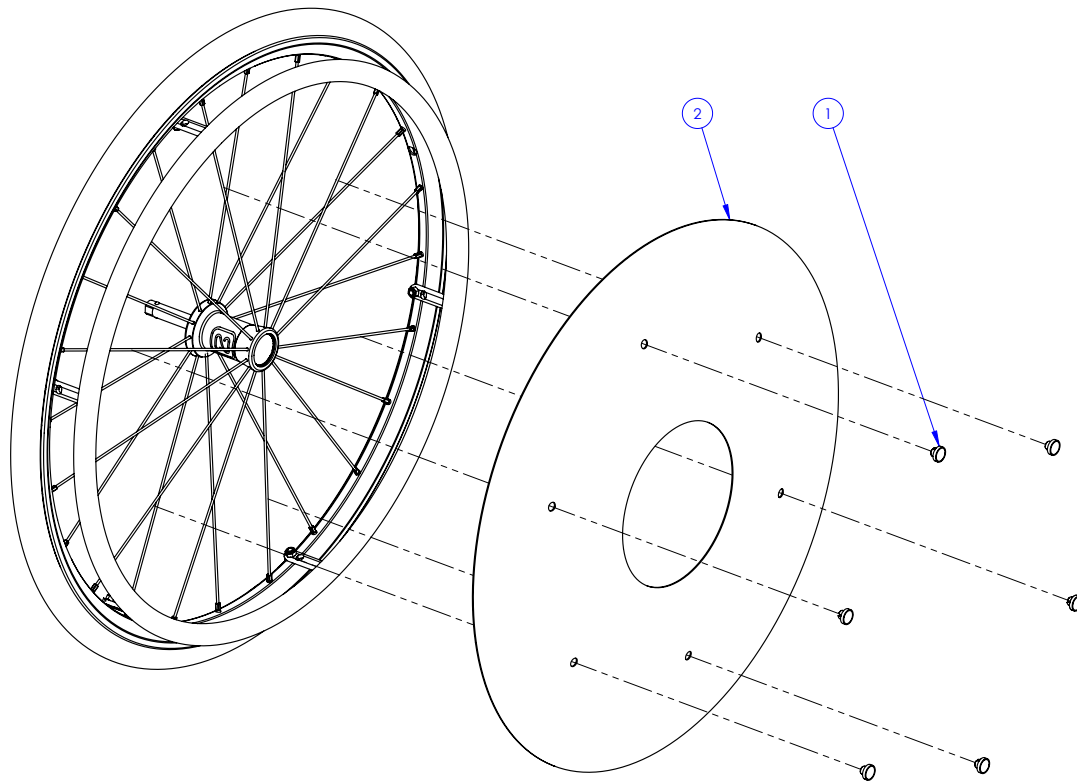


ITEM NO.	PARTNO	DESCRIPTION
1	21 200	20" ALUMINUM ANODIZED HANDRIM
1	21 201	22" ALUMINUM ANODIZED HANDRIM
1	21 202	24" ALUMINUM ANODIZED HANDRIM
1	21 203	25" ALUMINUM ANODIZED HANDRIM
1	21 204	26" ALUMINUM ANODIZED HANDRIM
2	21 205	22" ALUMINUM ANODIZED HANDRIM/ MAG WHEEL
2	21 206	24" ALUMINUM ANODIZED HANDRIM/ MAG WHEEL
2	21 207	22" PLASTIC COATED HANDRIM/ MAG WHEEL
2	21 208	24" PLASTIC COATED HANDRIM/ MAG WHEEL
1	21 210	20" PLASTIC COATED HANDRIM
1	21 211	22" PLASTIC COATED HANDRIM
1	21 212	24" PLASTIC COATED HANDRIM
1	21 213	25" PLASTIC COATED HANDRIM
1	21 214	26" PLASTIC COATED HANDRIM
1	21 215	20" HIGH FRICTION HANDRIM
1	21 216	22" HIGH FRICTION HANDRIM
1	21 217	24" HIGH FRICTION HANDRIM
1	21 218	25" HIGH FRICTION HANDRIM
1	21 219	26" HIGH FRICTION HANDRIM
3	21 221	22" NATURAL FIT HANDRIM
3	21 222	24" NATURAL FIT HANDRIM
3	21 224	26" NATURAL FIT HANDRIM
4	21 230	22" SILICONE HANDRIM COVER
4	21 231	24" SILICONE HANDRIM COVER
3	21 232	22" SURGE HANDRIM
3	21 233	24" SURGE HANDRIM

SPOKES GUARD

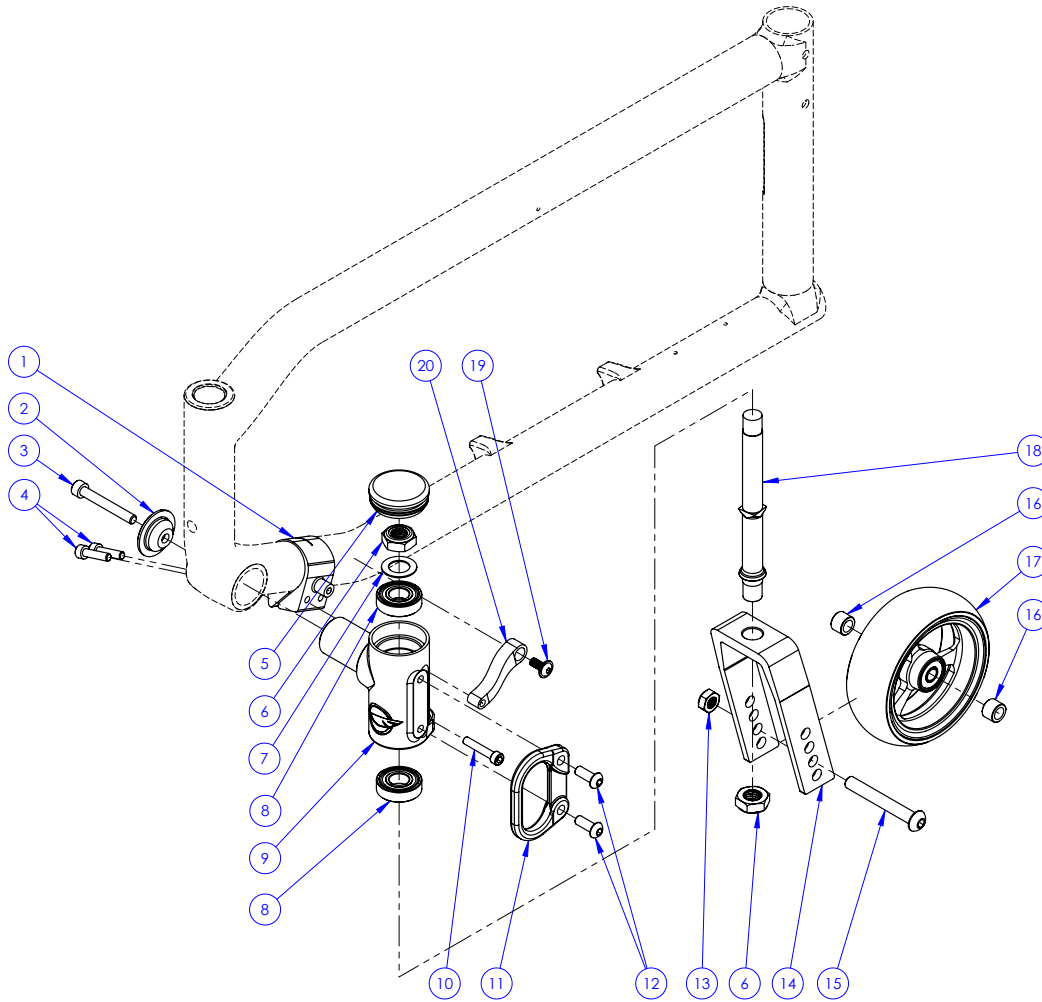
HELIO C2

ITEM NO.	PARTNO	DESCRIPTION	QTY.
1	51034	SPOKE SHIELD CLIP	6
2a	51019	SPOKE GUARD 20"	1
2b	51020	SPOKE GUARD 22"	1
2c	51021	SPOKE GUARD 24"	1
2d	51025	SPOKE GUARD 26"	1



TITRFRONT WHEEL ASSEMBLY

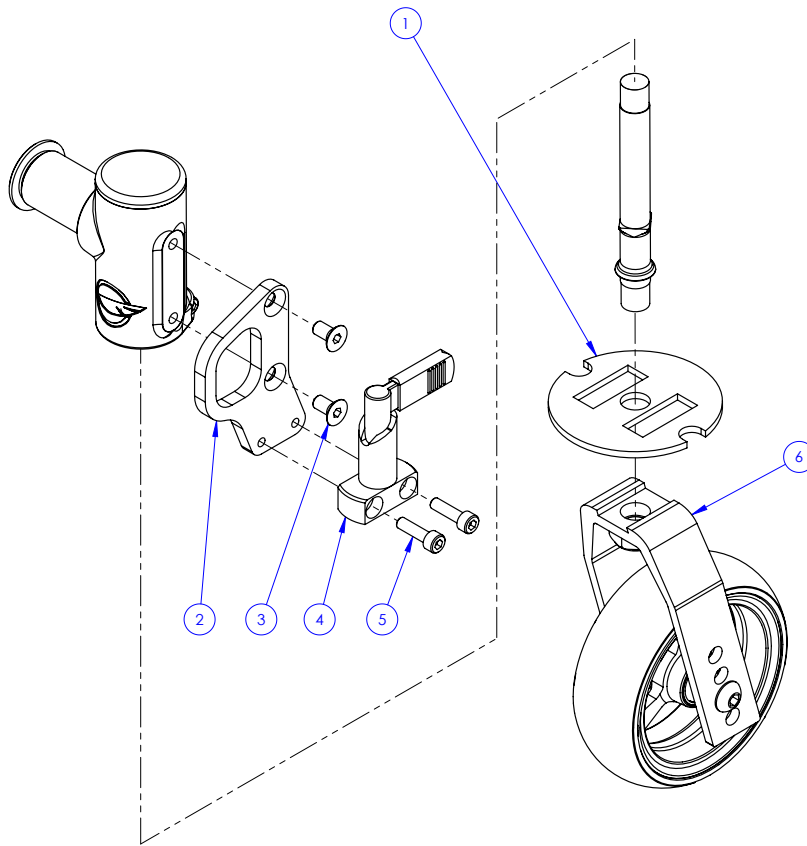
HELIO C2



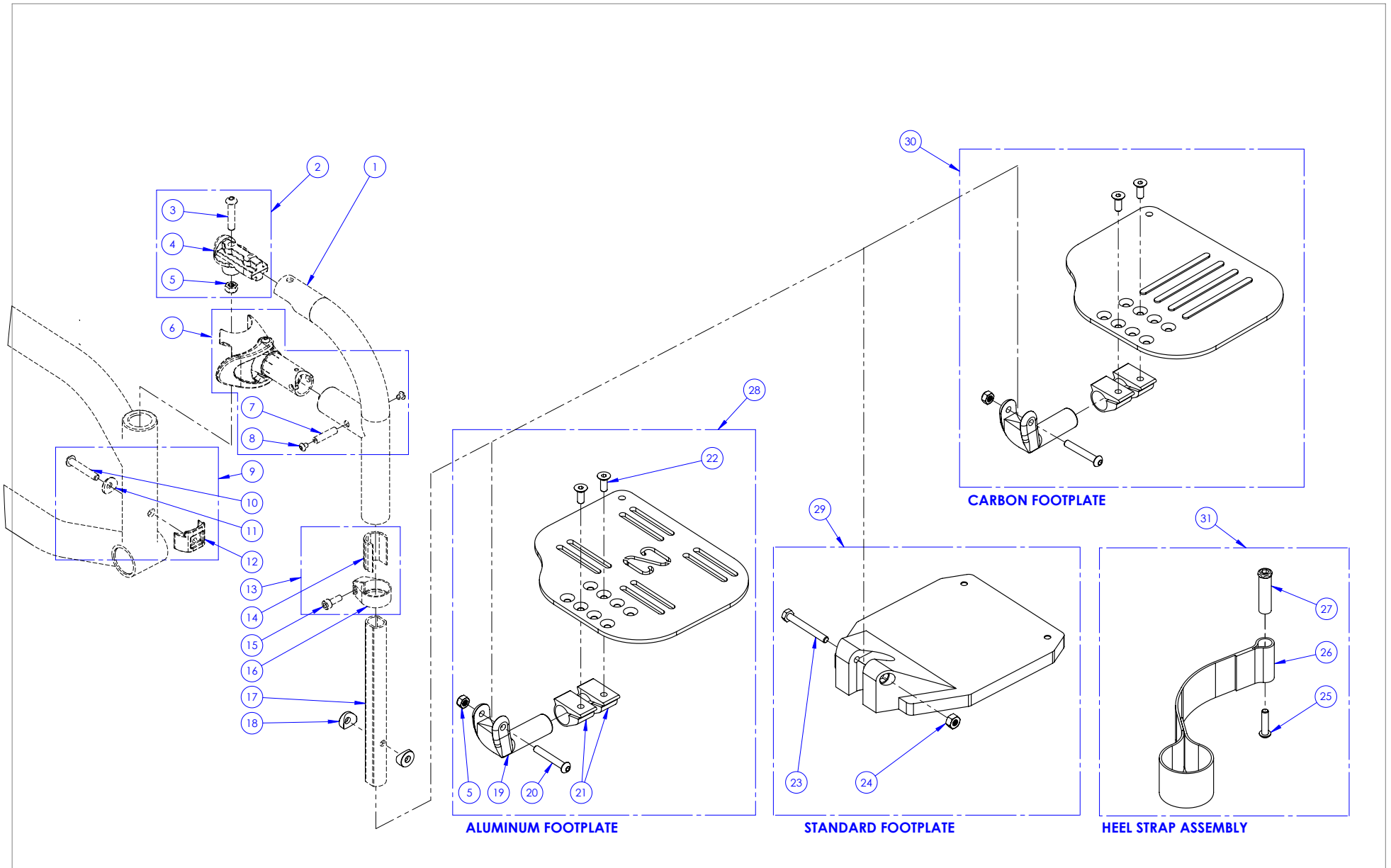
ITEM NO.	PARTNO	DESCRIPTION	QTY.
1	22052	FRONT WHEEL CLAMP V2	1
2	22009	HOUSING SIDE CAP	1
3	90777	SOCKET CAP SCREW M6X1 X 45mm LONG, 24mm THREADED	1
4	90749	SOCKET CAP SCREW M5X0.8 X 20mm LONG, FULLY THREADED	2
5	99700	CAP Ø1.5	1
6	90992	M12 LOW NYLON LOCK	2
7	99595	WASHER 1_2, 17_32 ID X 7_8 OD X .032 THK	1
8	22011	BEARING R8/2RS	2
9	22047	FRONT WHEEL HOUSING ASSEMBLY	1
10	99114	SOCKET CAP SCREW #10-32 X 1	1
11	22004	FRONT TIE DOWN	1
12	90659	BUTTON HEAD CAP SCREW M6X1 X 16mm LONG, FULLY THREADED	2
13	90990	M8 LOW NYLON LOCK	1
14a	22100	3"x1-1/2" FORK	1
14b	22106	4"x2" FORK	1
14c	22107	5"x2" FORK	1
14d	22109	7"x2" FORK	1
15	90685	BUTTON HEAD CAP SCREW M8X1.25 X 60mm LONG, 28mm THREADED	1
16a	22029	CASTER SPACER LARGE	2
16b	22028	CASTER SPACER SMALL	1
17a	22016	3"x1" STANDARD CASTER	1
17b	22017	4"x1" STANDARD CASTER	1
17c	22018	5"x1" STANDARD CASTER	1
17d	22019	6"x1" STANDARD CASTER	1
17e	22020	7"x1" STANDARD CASTER	1
17f	22021	8"x1" STANDARD CASTER	1
17g	22022	4"x1-1/2" SOFT ROLL CASTER	1
17h	22023	5"x1-1/2" SOFT ROLL CASTER	1
17i	22024	6"x1-1/2" SOFT ROLL CASTER	1
17j	22025	6"x1-1/4" PNEUMATIC CASTER	1
17k	22027	8"x1-1/4" PNEUMATIC CASTER	1
17l	22044	4"x1" ALUMINUM HARD ROLL COURT CASTER	1
17m	22045	5"x1" ALUMINUM HARD ROLL COURT CASTER	1
17m	22046	6"x1" ALUMINUM HARD ROLL COURT CASTER	1
18a	22031	STEM BOLT STD	1
18b	22032	STEM BOLT + 1	1
18c	22033	STEM BOLT + 2	1
19	90993	FLANGE BUTTON HEAD CAP SCREW, M5X.8 X 12mm	1
20	22053	TORQUE ARM V2	1

CASTER LOCK

HELIO C2



ITEM NO.	PARTNO	DESCRIPTION	QTY.
1	22060	CASTER LOCK PIN PLATE	1
2a	22061	FRONT TIE DOWN +1 FOR CASTER LOCK PIN	1
2b	22062	FRONT TIE DOWN +2 FOR CASTER LOCK PIN	1
3	90864	FLAT HEAD CAP SCREW M6X1 X 12mm LONG, FULLY THREADED	2
4	22063	SLIDER LOCK FOR CASTER LOCK PIN	1
5	90748	SOCKET CAP SCREW M5X0.8 X 18mm LONG, FULLY THREADED	2
6a	22064	4"x2" MACHINED FORK FOR CASTER LOCK PIN	1
6b	22065	5"x2" MACHINED FORK FOR CASTER LOCK PIN	1
6c	22066	7"x2" MACHINED FORK FOR CASTER LOCK PIN	1
6d	22067	3" x 1½" MACHINED FORK FOR CASTER LOCK PIN	1

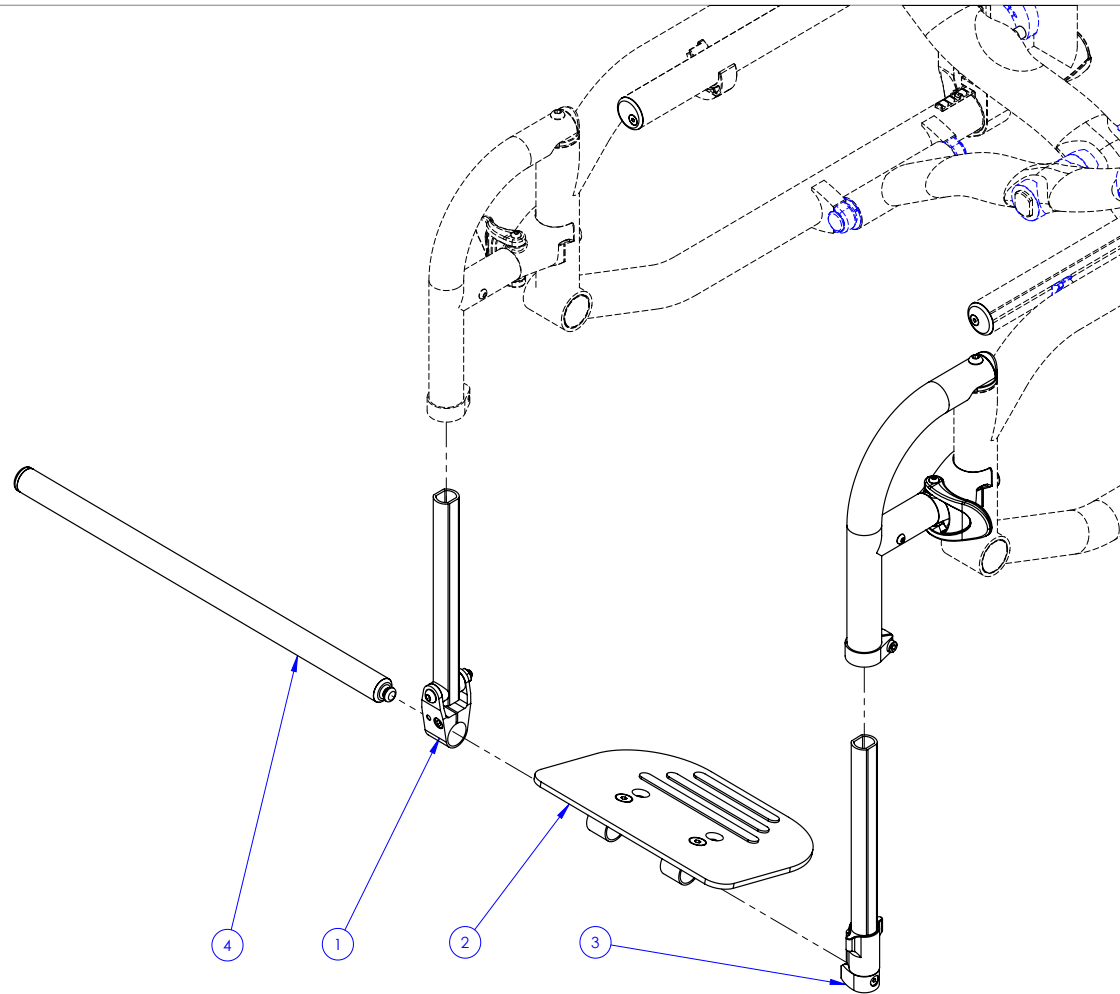


FOOTRESTS

HELIO C2

ITEM NO.	PARTNO	DESCRIPTION	QTY.
1a	31177	V2 FOOTREST 90° STRUCTURE	1
1b	31166	V2 FOOTREST 60° STRUCTURE	1
1c	31167	V2 FOOTREST 70° STRUCTURE	1
2	31551	V2 FOOTREST PIVOT - ASSEMBLY	1
3	90664	BUTTON HEAD CAP SCREW M6X1 X 30mm LONG, FULLY THREADED	1
4	31162	V2 FOOTREST PIVOT	1
5	99512	M6 LOW NYLON LOCK	2
6a	31549	V2 FOOTREST HOUSING LEFT - ASSEMBLY	1
6b	31550	V2 FOOTREST HOUSING RIGHT - ASSEMBLY	1
7	31176	V2 FOOTREST THREADED SPACER	1
8	90629	BUTTON HEAD CAP SCREW M4X0.7 X 5mm LONG, FULLY THREADED	4
9	31554	V2 FOOTREST ANCHOR - ASSEMBLY	1
10	90665	BUTTON HEAD CAP SCREW M6X1 X 35mm LONG, 24mm THREADED	1
11	31179	V2 FOOTREST COVED WASHER	1
12	31175	V2 FOOTREST ANCHOR	1
13a	31552	V2 FOOTREST EXTENSION RIGHT CLAMP - ASSEMBLY	1
13b	31553	V2 FOOTREST EXTENSION LEFT CLAMP - ASSEMBLY	1
14	31168	V2 FOOTREST GUIDE SLEEVE	1
15	90745	SOCKET CAP SCREW M5X0.8 X 14mm LONG, FULLY THREADED	1
16a	31170	V2 FOOTREST EXTENSION RIGHT CLAMP	1
16b	31178	V2 FOOTREST EXTENSION LEFT CLAMP	1
17a	31169	V2 FOOTREST EXTENSION	1
17b	31209	V2 FOOTREST 90° LONG EXTENSION	1
17c	31198	V2 FOOTREST 90° EXTENSION	1
18	31052	COVERED WASHER 1/4 x 3/4	2
19	31115	ANGLE ADJUSTABLE FOOTPLATE PIVOT	1
20	90666	BUTTON HEAD CAP SCREW M6X1 X 40mm LONG, 24mm THREADED	1
21	31116	ANGLE ADJUSTABLE FOOTPLATE CLAMP	2
22	90866	FLAT HEAD CAP SCREW M6X1 X 16mm LONG, FULLY THREADED	2
23	90996	HEX SCREW M6X1 X 50mm LONG, FULLY THREADED	1
24	31101	M6 CONVERSION NUT FOR PLASTIC FOOTPLATE	1
25	90663	BUTTON HEAD CAP SCREW M6X1 X 25mm LONG, FULLY THREADED	1
26	31045	ADJUSTABLE HEEL LOOP	1
27	31016	HEEL LOOP PIN (M)	1

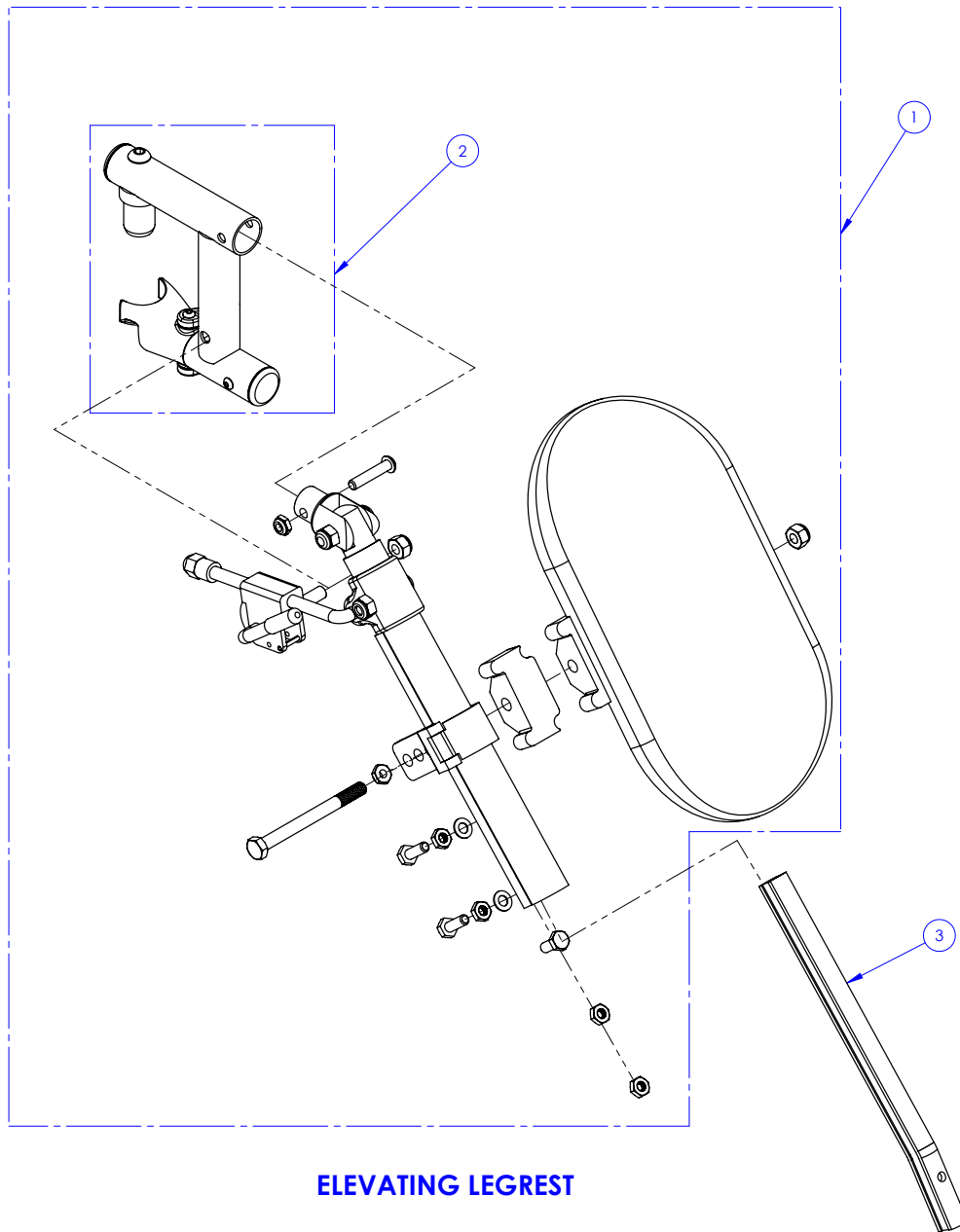
ITEM NO.	PART NO.	DESCRIPTION	QTY.
28a	1000803	12-13" ALUMINUM RIGHT FOOTPLATE ASSEMBLY	1
28b	1000804	12-13" ALUMINUM LEFT FOOTPLATE ASSEMBLY	1
28c	1000805	14-16" ALUMINUM RIGHT FOOTPLATE ASSEMBLY	1
28d	1000806	14-16" ALUMINUM LEFT FOOTPLATE ASSEMBLY	1
28e	1000807	17-18" ALUMINUM RIGHT FOOTPLATE ASSEMBLY	1
28f	1000808	17-18" ALUMINUM LEFT FOOTPLATE ASSEMBLY	1
28g	1000809	19-20" ALUMINUM RIGHT FOOTPLATE ASSEMBLY	1
28h	1000810	19-20" ALUMINUM LEFT FOOTPLATE ASSEMBLY	1
28i	1000811	12-13" ALUMINUM RIGHT FOOTPLATE ASSEMBLY X-LONG	1
28j	1000812	12-13" ALUMINUM LEFT FOOTPLATE ASSEMBLY X-LONG	1
28k	1000813	14-16" ALUMINUM RIGHT FOOTPLATE ASSEMBLY X-LONG	1
28l	1000814	14-16" ALUMINUM LEFT FOOTPLATE ASSEMBLY X-LONG	1
29a	31025	PLASTIC FOOTPLATE 14"-16"	1
29b	31026	PLASTIC FOOTPLATE 17"-18"	1
29c	31027	PLASTIC FOOTPLATE 19"+	1
30a	1000816	14-16" CARBON FIBRE RIGHT FOOTPLATE ASSEMBLY	1
30b	1000817	14-16" CARBON FIBRE LEFT FOOTPLATE ASSEMBLY	1
30c	1000818	17-18" CARBON FIBRE RIGHT FOOTPLATE ASSEMBLY	1
30d	1000819	17-18" CARBON FIBRE LEFT FOOTPLATE ASSEMBLY	1
30e	1000820	19-20" CARBON FIBRE RIGHT FOOTPLATE ASSEMBLY	1
30f	1000821	19-20" CARBON FIBRE LEFT FOOTPLATE ASSEMBLY	1
31	1000815	ASSEMBLAGE COURROIE APPUI-TALON AJUSTABLE	1



ITEM NO.	PARTNO	DESCRIPTION	QTY.
1	31555	V2 PF PIVOT SIDE EXTENSION TUBE - ASSEMBLY	1
2a	31557	V2 6" PLATFORM - ASSEMBLY	1
2b	31558	V2 8" PLATFORM - ASSEMBLY	1
2c	31559	V2 10" PLATFORM - ASSEMBLY	1
3	31556	V2 PF ANCHOR SIDE EXTENSION TUBE - ASSEMBLY	1
4a	31560	V2 14½" PLATFORM MAIN TUBE - ASSEMBLY	1
4b	31561	V2 18½" PLATFORM MAIN TUBE - ASSEMBLY	1

ELEVATING LEGRESTS

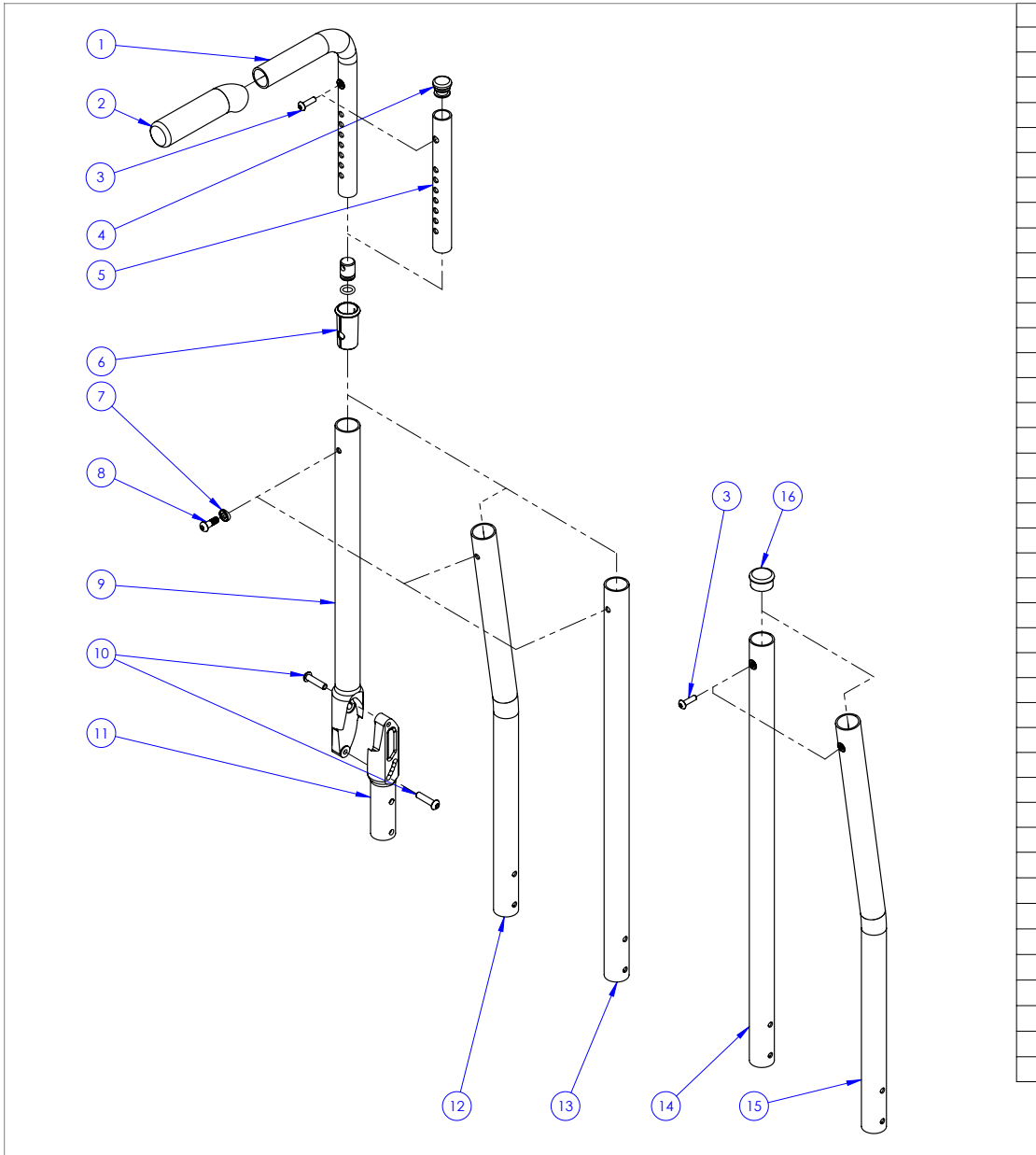
HELIO C2



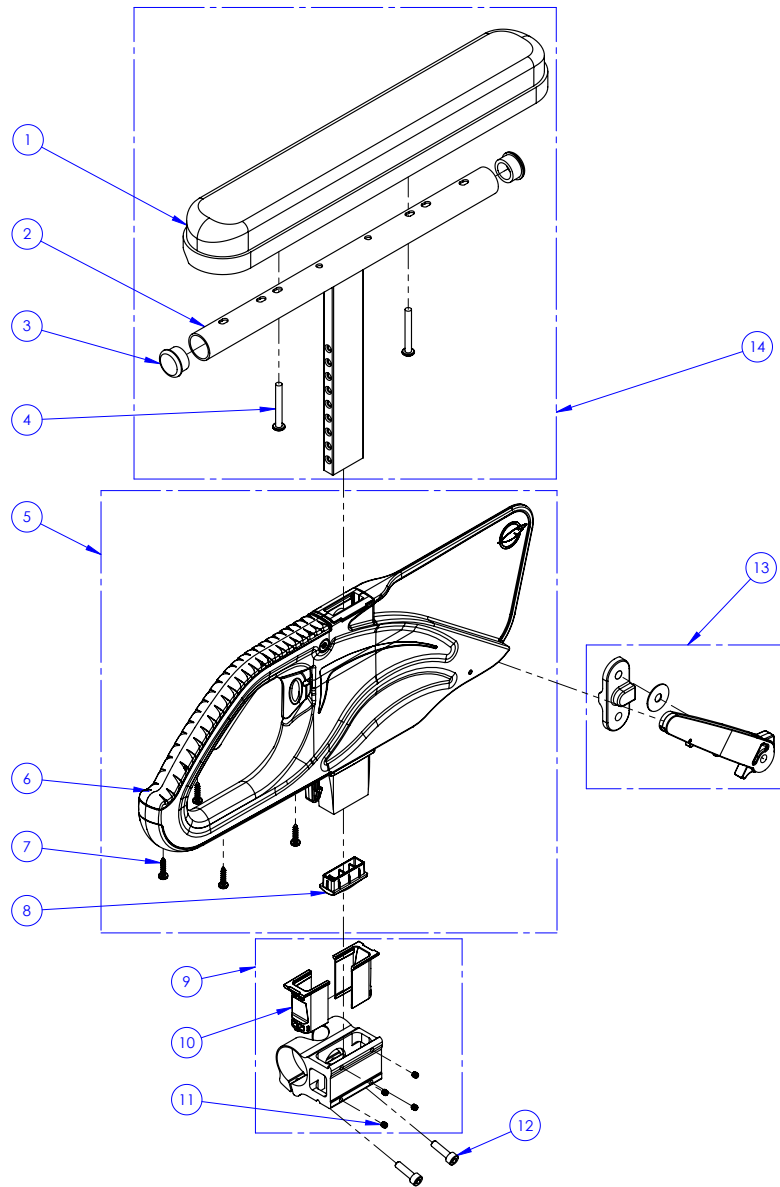
ITEM NO.	PARTNO	DESCRIPTION	QTY.
1a	31564	V2 ELEVATING LEGREST 14"-15" RIGHT	1
1b	31565	V2 ELEVATING LEGREST 14"-15" LEFT	1
1c	31568	V2 ELEVATING LEGREST 18"-20" RIGHT	1
1d	31569	V2 ELEVATING LEGREST 18"-20" LEFT	1
2a	31562	V2 UNIVERSAL LEGREST HANGER LEFT - ASSEMBLY	1
2b	31563	V2 UNIVERSAL LEGREST HANGER RIGHT - ASSEMBLY	1
3a	31053	ELEVATING LEGREST MEDIUM EXTENSION	1
3b	31057	ELEVATING LEGREST LONG EXTENSION	1

BACK RESTS / PUSH HANDLES

HELIO C2



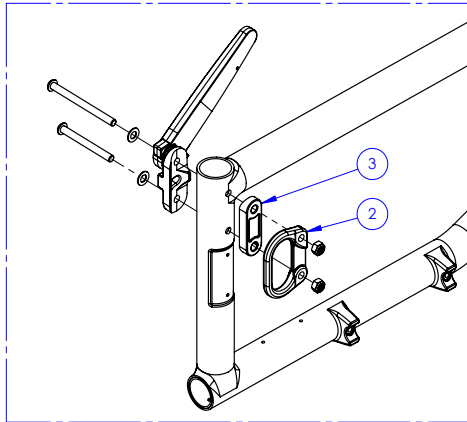
ITEM NO.	PARTNO	DESCRIPTION	QTY.
1	32012	PUSH HANDLE	1
2	32023	HAND GRIP 7_8	1
3	90647	BUTTON HEAD CAP SCREW M5X0.8 X 18mm LONG, FULLY THREADED	1
4	99701	PLASTIC PLUGS	1
5	32013	BACK EXTENSION	1
6	32017	PUSH HANDLE BACK SLEEVE	1
7	32067	PUSH HANDLE CS WASHER	1
8	90984	BUTTON HEAD SHOULDER M6X18X12mm THREAD LENGTH	1
9a	32518	ALUMINUM ADJUSTABLE ANGLE BACK 15-18" (M)	1
9b	32519	ALUMINUM ADJUSTABLE ANGLE BACK 18-21" (M)	1
9c	32520	CARBON FIBER ADJUSTABLE ANGLE BACK CANE 13-1/2_15" (M)	1
9d	32521	CARBON FIBER ADJUSTABLE ANGLE BACK CANE 15-18" (M)	1
9e	32522	CARBON FIBER ADJUSTABLE ANGLE BACK CANE 18-21" (M)	1
9f	32523	CARBON FIBER ADJUSTABLE ANGLE 8° BEND BACK CANE 13-1/2_15" (M)	1
9g	32524	CARBON FIBER ADJUSTABLE ANGLE 8° BEND BACK CANE 15-18" (M)	1
9h	32525	CARBON FIBER ADJUSTABLE ANGLE 8° BEND BACK CANE 18-21" (M)	1
10	90663	BUTTON HEAD CAP SCREW M6X1 X 25mm LONG, FULLY THREADED	2
11	32037	LOWER ADJUSTABLE BACKREST (M)	1
12a	32078	CARBON 8° BEND BACK CANE 14-15" (M)	1
12b	32079	CARBON 8° BEND BACK CANE 15-18" (M)	1
12c	32080	CARBON 8° BEND BACK CANE 18"-21" (M)	1
12d	32085	ALU 8° BEND BACK CANE 14-15" (M)	1
12e	32086	ALU 8° BEND BACK CANE 15-18" (M)	1
12f	32087	ALU 8° BEND BACK CANE 18-21" (M)	1
13a	32073	CARBON STRAIGHT BACK CANE 9-12" (M)	1
13b	32074	CARBON STRAIGHT BACK CANE 12-15" (M)	1
13c	32075	CARBON STRAIGHT BACK CANE 15-18" (M)	1
13d	32076	CARBON STRAIGHT BACK CANE 18-21" (M)	1
13e	32077	CARBON STRAIGHT BACK CANE 21-24" (M)	1
13f	32081	ALU STRAIGHT BACK CANE 9-12" (M)	1
13g	32082	ALU STRAIGHT BACK CANE 12-15" (M)	1
13h	32083	ALU STRAIGHT BACK CANE 15-18" (M)	1
13i	32084	ALU STRAIGHT BACK CANE 18-21" (M)	1
14a	32039	CARBON STRAIGHT BACK CANE 12" NO PUSH HANDLE (M)	1
14b	32040	CARBON STRAIGHT BACK CANE 15" NO PUSH HANDLE (M)	1
14c	32041	CARBON STRAIGHT BACK CANE 18" NO PUSH HANDLE (M)	1
14d	32042	CARBON STRAIGHT BACK CANE 21" NO PUSH HANDLE (M)	1
15a	32043	CARBON 8° BEND BACK CANE 12" NO PUSH HANDLE (M)	1
15b	32044	CARBON 8° BEND BACK CANE 15" NO PUSH HANDLE (M)	1
15c	32045	CARBON 8° BEND BACK CANE 18" NO PUSH HANDLE (M)	1
15d	32046	CARBON 8° BEND BACK CANE 21" NO PUSH HANDLE (M)	1
16	99704	CAP 1 IN CARBON	1



ITEM NO.	PARTNO	DESCRIPTION	QTY.
1a	33039	ARMREST FULL LENGHT PAD	1
1b	33038	ARMREST DESK PAD	1
2b	33125	V2 ARMREST ADJUSTABLE ARM 10-14"	1
2a	33124	V2 ARMREST ADJUSTABLE ARM 8-12"	1
3	33133	V2 ARMREST ADJUSTABLE ARM PLUG	2
4	99013	SCREW PHILLIPS PAN HD #10_32 X 1_1_2	2
5	33554	V2 ARMREST - MAIN BODY	1
6	33101	V2 ARMREST ARM STRUCTURE	1
7	90912	STEEL BLACK ZINC PLATED PHILLIPS PLASTIC SCREW 6-13 THREAD X 16mm L	4
8	33111	V2 ARMREST MAIN EXTRUSION CAP	1
9	33555	V2 ARMREST RECEIVER - ASSEMBLY	1
10	33112	V2 ARMREST U CLAMP SLEEVE	2
11	90910	STEEL BLACK ZINC PLATED SET SCEW M4X0.7 X 4mm L	4
12	90748	SOCKET CAP SCREW M5X0.8 X 18mm LONG, FULLY THREADED	2
13	33558	V2 ARMREST REAR PIVOT - ASSEMBLY	1
14a	1000597	RIGHT DESK LENGHT 8-12 T ARM ASSEMBLY	1
14b	1000598	LEFT DESK LENGHT 8-12 T ARM ASSEMBLY	1
14c	1000599	RIGHT FULL LENGHT 8-12 T ARM ASSEMBLY	1
14d	1000600	LEFT FULL LENGHT 8-12 T ARM ASSEMBLY	1
14e	1000601	RIGHT DESK LENGHT 10-14 T ARM ASSEMBLY	1
14f	1000602	LEFT DESK LENGHT 10-14 T ARM ASSEMBLY	1
14g	1000603	RIGHT FULL LENGHT 10-14 T ARM ASSEMBLY	1
14h	1000604	LEFT FULL LENGHT 10-14 T ARM ASSEMBLY	1

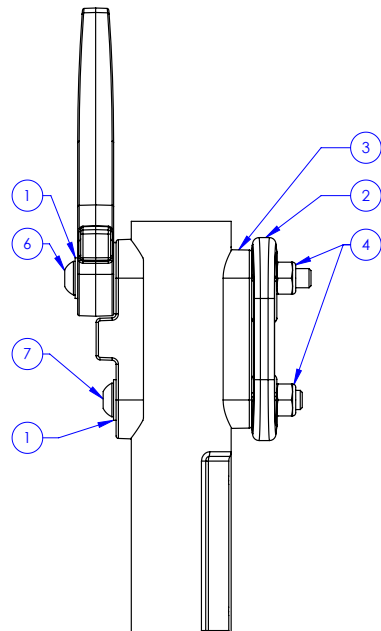
ARMREST PIVOT POINT

HELIO C2

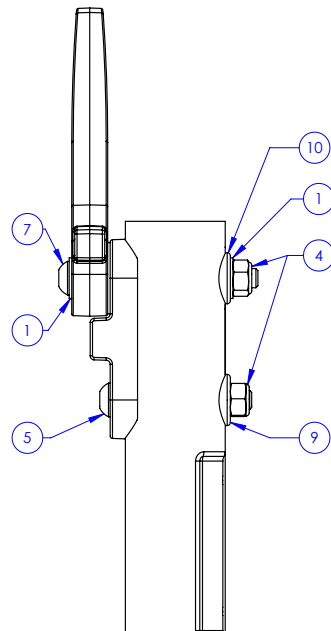


ITEM NO.	PARTNO	DESCRIPTION
1	99560	WASHER 1/4 17/64 ID X 1/2 OD X .032 THK
2	22004	TIE DOWN
3	32066	DOUBLE COVERED WASHER
4	99512	M6 LOW NYLON LOCK
5	90667	BUTTON HEAD CAP SCREW M6X1 X 45mm LONG, 24mm THREADED
6	90982	BUTTON HEAD CAP SCREW M6X1 X 75mm LONG, 24mm THREADED
7	90670	BUTTON HEAD CAP SCREW M6X1 X 60mm LONG, 24mm THREADED
8	90669	BUTTON HEAD CAP SCREW M6X1 X 55mm LONG, 24mm THREADED
9	31179	V2 FOOTREST COVERED WASHER
10	32089	ALU SEMI COVERED WASHER

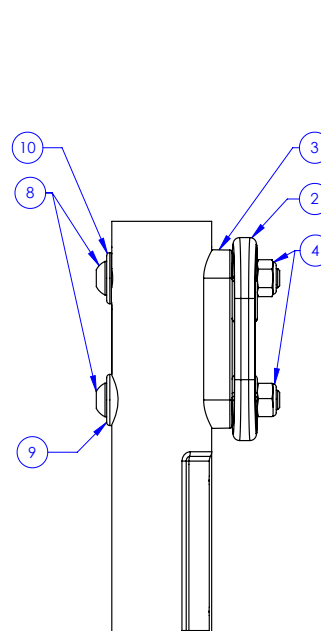
WITH TIE DOWN AND ARM REST PIVOT



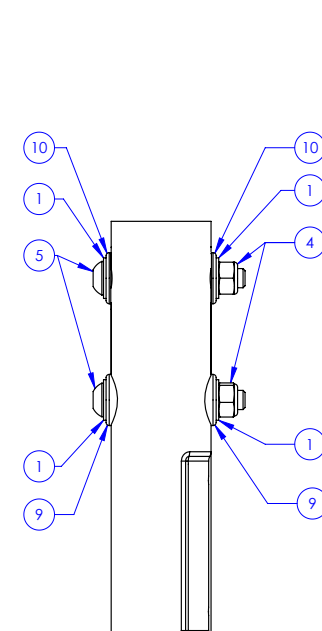
ONLY WITH ARM REST PIVOT



ONLY WITH TIE DOWN



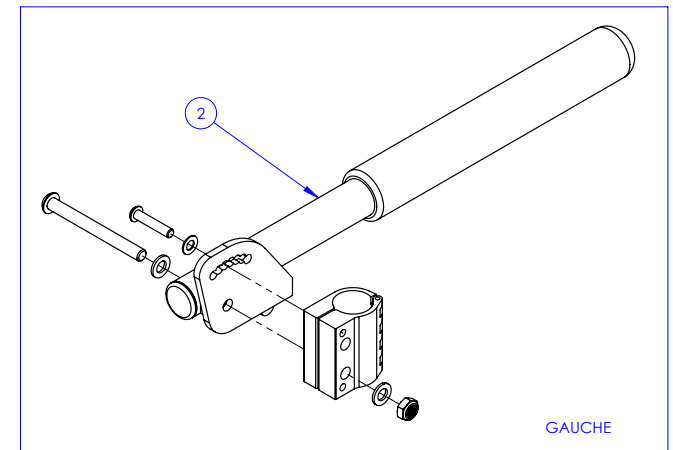
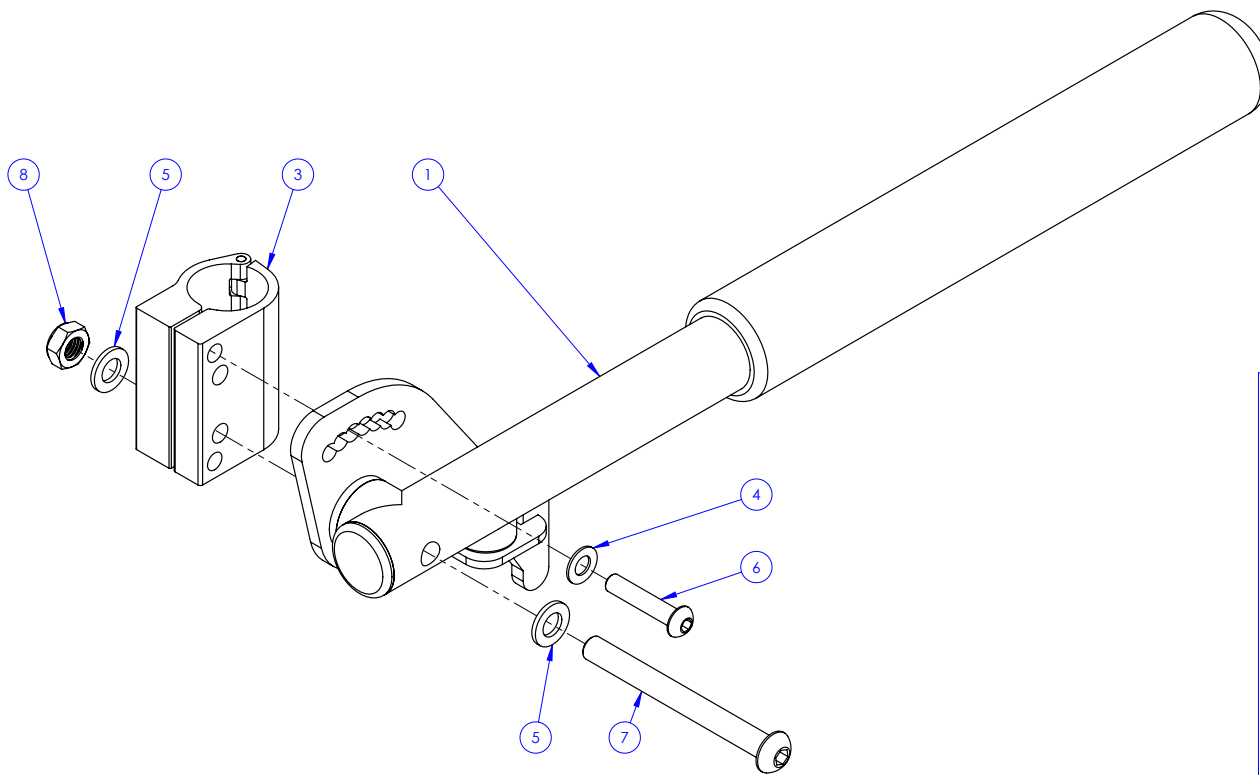
NO ATTACHMENTS



"1" ARMREST

HELIO C2

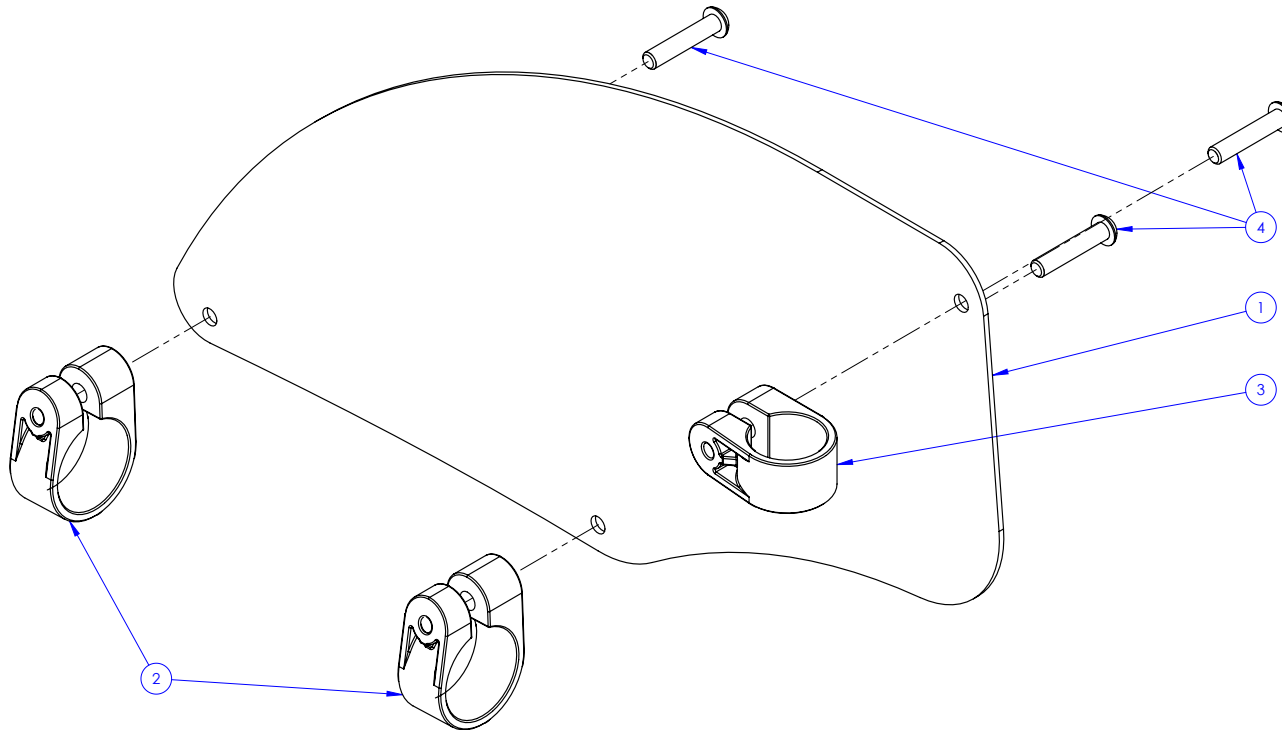
ITEM NO.	PARTNO	DESCRIPTION	QTY.
1	33502	RIGHT FLIP UP I ARM REST	1
2	33503	LEFT FLIP UP I ARM REST	1
3	33501	FLIP UP I ARMREST CLAMP - ASSEMBLY (M)	1
4	99560	WASHER 1/4 17/64 ID X 1/2 OD X .032 THK	1
5	99590	WASHER 5/16 - 21/64 ID X 19/32 OD X .062THK	2
6	90664	BUTTON HEAD CAP SCREW M6X1 X 30mm LONG, FULLY THREADED	1
7	90687	BUTTON HEAD CAP SCREW M8X1.25 X 80mm LONG, 28mm THREADED	1
8	90990	M8 LOW NYLON LOCK	1
1,3-8	1000590	RIGHT FLIP UP ARMREST ASSEMBLY	1
2-8	1000591	LEFT FLIP UP ARMREST ASSEMBLY	1

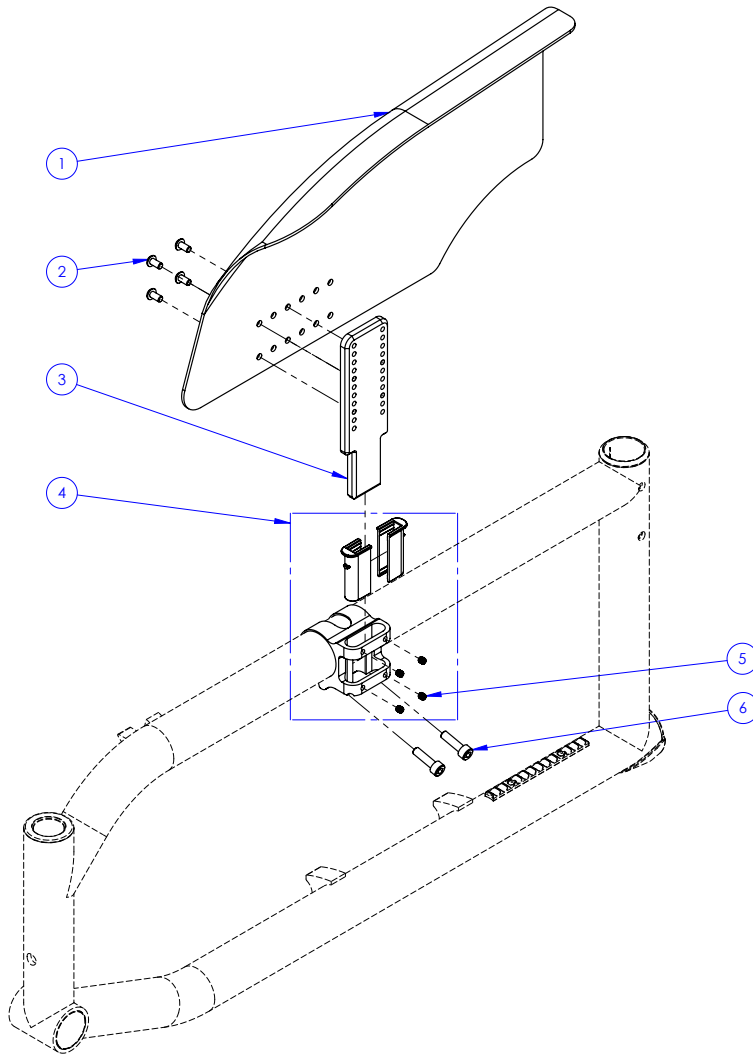


SIDEGUARD

HELIO C2

ITEM NO.	PARTNO	DESCRIPTION	QTY.
1a	51112	SMALL SIDEGUARD - 3K FINISH + COLOR DECAL	1
1b	51113	MEDIUM SIDEGUARD - 3K FINISH + COLOR DECAL	1
2	60201	1 1/4" FRAME SAVER	2
3	60202	1" FRAME SAVER	1
4	90664	BUTTON HEAD CAP SCREW M6X1 X 30mm LONG, FULLY THREADED	3

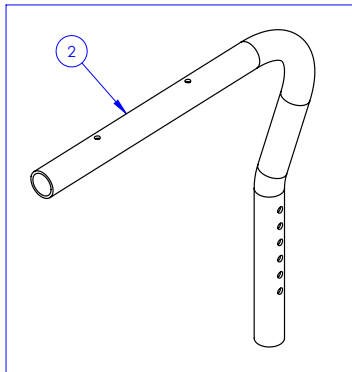
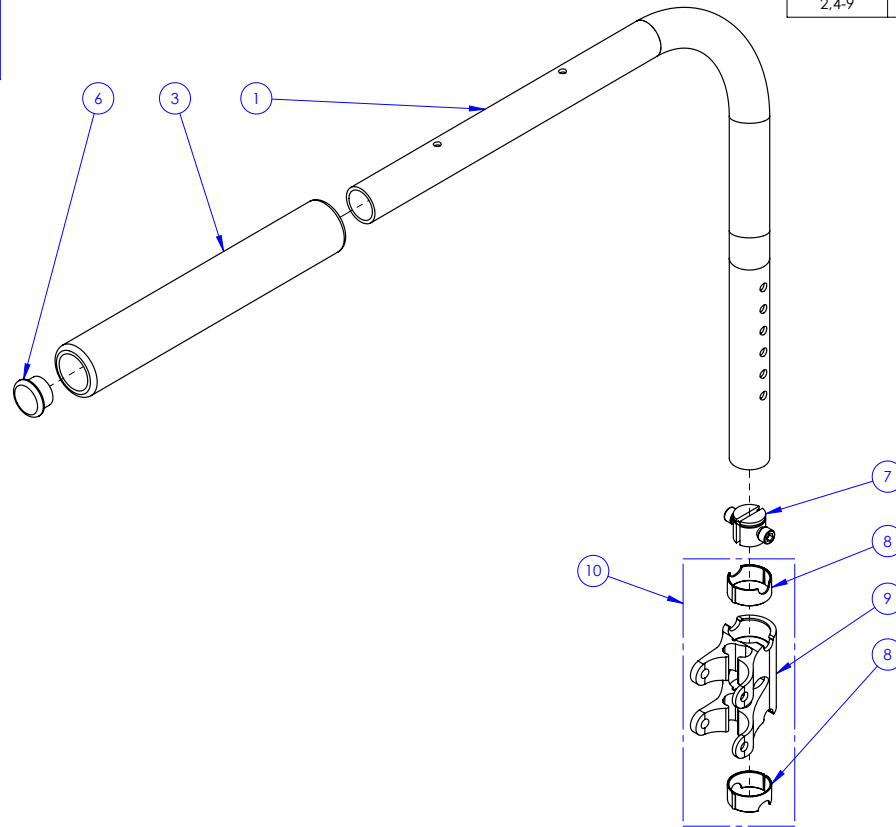
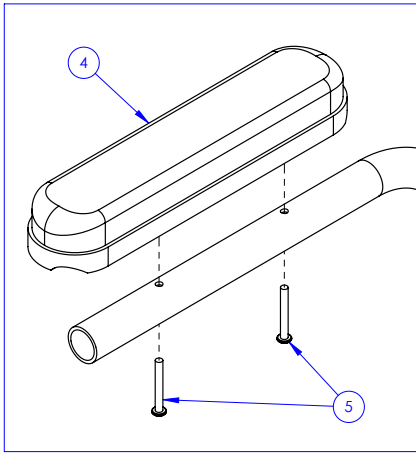




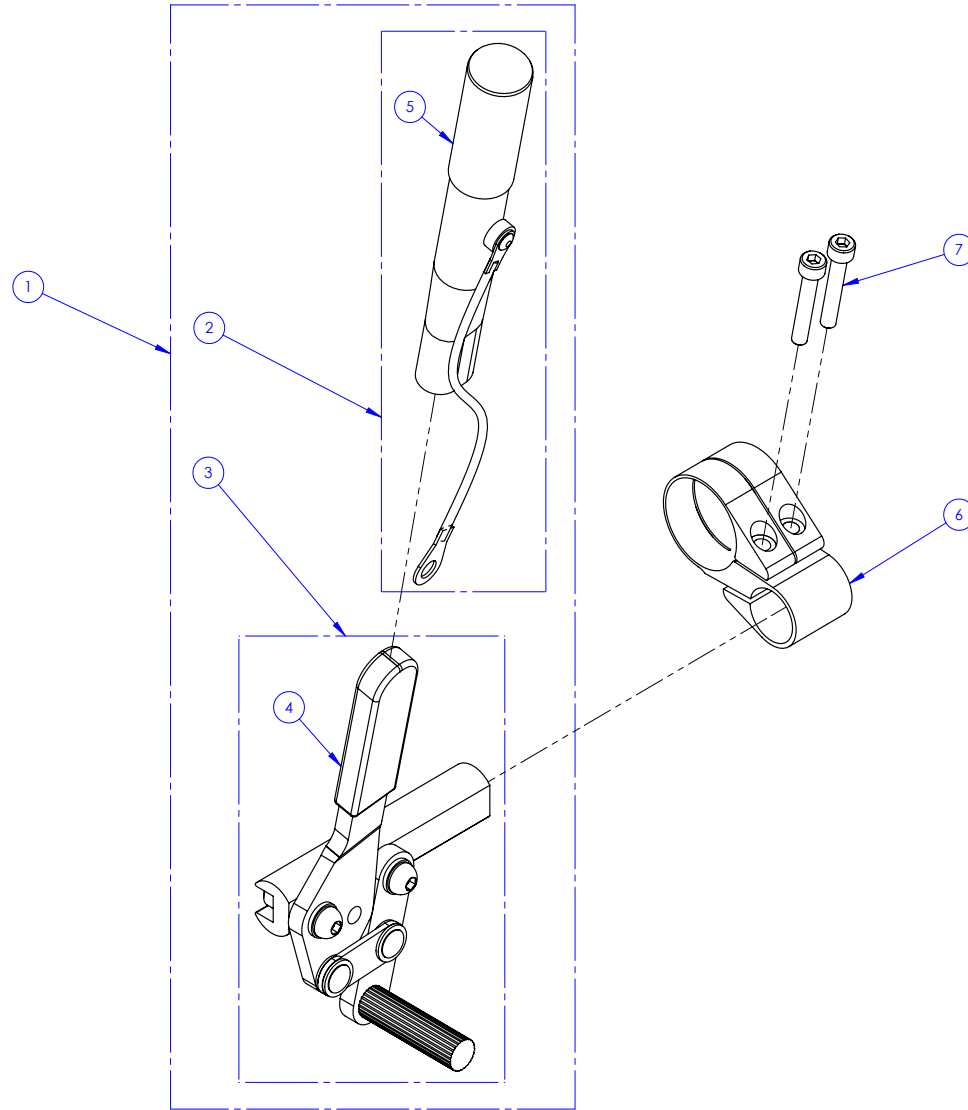
BOM Table(Restructured)			
ITEM NO.	PARTNO	DESCRIPTION	QTY.
1a	51106	CARBON MUDGUARD SMALL RIGHT	1
1b	51107	CARBON MUDGUARD SMALL LEFT	1
1c	51108	CARBON MUDGUARD MEDIUM RIGHT	1
1d	51109	CARBON MUDGUARD MEDIUM LEFT	1
1e	51002	RIGID SIDEGUARD MEDIUM (PAIR)	1
1f	51003	RIGID SIDEGUARD LARGE (PAIR)	1
2	90631	BUTTON HEAD CAP SCREW M4X0.7 X 8mm LONG, FULLY THREADED	4
3	51118	MUDGUARD & SIDEGUARD ADJUSTING PLATE	1
4	33557	V2 SIDEGUARD RECEIVER - ASSEMBLY	1
5	90910	STEEL BLACK ZINC PLATED SET SCEW M4X0.7 X 4mm L	4
6	90748	SOCKET CAP SCREW M5X0.8 X 18mm LONG, FULLY THREADED	2

"L" ARMREST

HELIO C2

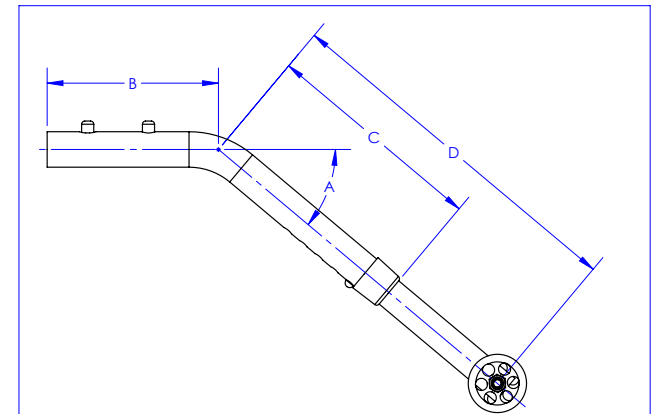
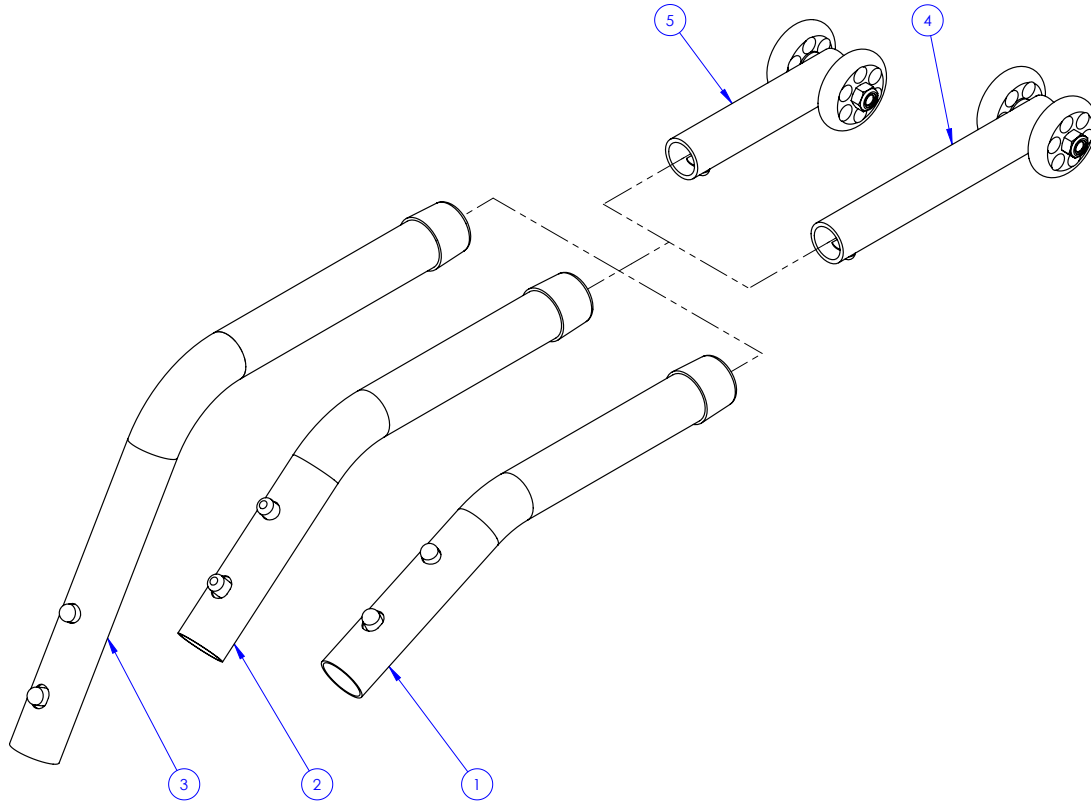


ITEM NO.	PARTNO	DESCRIPTION	QTY.
1	33035	L TYPE ARMREST RIGHT (M)	1
2	33036	L TYPE ARMREST LEFT (M)	1
3	33049	FOAM GRIP_L ARMREST	1
4	33038	ARMREST DESK PAD	1
5	99013	SCREW PHILLIPS PAN HD #10_32 X 1_1_2	2
6	99702	CAP 1 IN ALU	1
7	33552	SPLIT NUT (M)	1
8	33040	V2 L TYPE ARMREST SLEEVE	2
9	33032	L ARMREST SUPPORT	1
10	33538	SWING AWAY ARMREST RECEIVER - ASSEMBLY	1
1,3,6,7-9	1000592	RIGHT TUBULAR SWING AWAY ARMREST ASSEMBLY	1
2,3,6,7-9	1000593	LEFT TUBULAR SWING AWAY ARMREST ASSEMBLY	1
1,4-9	1000594	RIGHT DESK LENGHT SWING AWAY ARMREST ASSEMBLY	1
2,4-9	1000595	LEFT DESK LENGHT SWING AWAY ARMREST ASSEMBLY	1



ITEM NO.	PARTNO	DESCRIPTION	QTY.
1a	41013	WHEEL LOCK PUSH + EXTENSION (PAIR)	1
1b	41014	WHEEL LOCK PULL + EXTENSION (PAIR)	1
2	41005	REMOVABLE EXTENSION HANDLE	1
3a	41002	WHEEL LOCK PUSH (PAIR)	1
3b	41003	WHEEL LOCK PULL (PAIR)	1
3c	41004	WHEEL LOCK GRADE AID (PAIR)	1
3d	41006	SCISSOR WHEEL LOCK LEFT	1
3e	41007	SCISSOR WHEEL LOCK RIGHT	1
4	41019	BRAKE HANDLE GRIP	1
5	41018	REMOVABLE EXTENSION HANDLE GRIP	1
6	41017	V2 BRAKE CLAMP	1
7	90752	SOCKET CAP SCREW M5X0.8 X 30mm LONG, 22mm THREADED	2

ITEM NO.	PARTNO	DESCRIPTION	QTY.
1	51519	ANTI-TIPPER SMALL V2 - ASSEMBLY	1
2	51520	ANTI-TIPPER MEDIUM V2 - ASSEMBLY	1
3	51521	ANTI-TIPPER LARGE V2 - ASSEMBLY	1
4	51518	ANTI-TIPPER EXTENSION LONG V2 - ASSEMBLY	1
5	51517	ANTI-TIPPER EXTENSION SHORT V2 - ASSEMBLY	1



* D VALUE CAN CHANGE IN INCREMENTS OF 12mm BETWEEN MIN AND MAX

PART #	ANGLE A	B	C	D min	D max
51519 + 51517	25°	100mm	125mm	125mm	175mm
51520 + 51517	40°	105mm	135mm	135mm	185mm
51521 + 51517	60°	170mm	155mm	155mm	205mm
51519 + 51518	25°	100mm	125mm	165mm	215mm
51520 + 51518	40°	105mm	135mm	170mm	220mm
51521 + 51518	60°	170mm	155mm	195mm	245mm