

USER MANUAL

MODEL 1186

Multi-Mode Fiber Modem with
Fixed G.703/G.704 Interface



PATTON
Electronics Co.



An ISO-9001
Certified
Company

Part# 07M1186A
Doc# 017161UA
Revised 03/27/00

SALES OFFICE
(301)975-1000
TECHNICAL SUPPORT
(301)975-1007
<http://www.patton.com>

TABLE OF CONTENTS

<u>Section</u>	<u>Page</u>
1.0 Warranty Information	2
1.1 Radio and TV Interference	
1.2 CE Notice	
1.3 Service	
2.0 General Information.....	4
2.1 Features	
2.2 Description	
3.0 Configuration	5
3.1 Configure the Hardware DIP Switches	
3.1.1 Configuration of the Model 1186	
3.1.2 Select RJ-48C or BNC Connector	
4.0 Installation	9
4.1 Connect the G.703/G.704 Network	
4.1.1 Connect Twisted Pair to G.703/G.704 Network	
4.1.2 Connect Coax Cable to the G.703/G.704 Network	
4.2 Connect the Fiber Interface	
4.3 Power Connection	
4.3.1 Universal AC Power (100-240VAC)	
4.3.2 DC Power	
5.0 Operation.....	12
5.1 Power-Up	
5.2 LED Status Monitors	
5.3 Test Modes	
5.3.1 Local Loopback	
5.3.2 Remote Digital Loopback	
5.3.3 V.52 Test Pattern Generator	
Appendix A - Specifications.....	17
Appendix B - Factory Replacement Parts and Accessories.....	19

1.0 WARRANTY INFORMATION

Patton Electronics warrants all Model 1186 components to be free from defects, and will—at our option—repair or replace the product should it fail within one year from the first date of shipment.

This warranty is limited to defects in workmanship or materials, and does not cover customer damage, abuse or unauthorized modification. If this product fails or does not perform as warranted, your sole recourse shall be repair or replacement as described above. Under no condition shall **Patton Electronics** be liable for any damages incurred by the use of this product. These damages include, but are not limited to, the following: lost profits, lost savings and incidental or consequential damages arising from the use of or inability to use this product. **Patton Electronics** specifically disclaims all other warranties, expressed or implied, and the installation or use of this product shall be deemed an acceptance of these terms by the user.

1.1 RADIO AND TV INTERFERENCE

The Model 1186 generates and uses radio frequency energy, and if not installed and used properly—that is, in strict accordance with the manufacturer's instructions—may cause interference to radio and television reception. The Model 1186 has been tested and found to comply with the limits for a Class A computing device in accordance with the specifications in Subpart J of Part 15 of FCC rules, which are designed to provide reasonable protection from such interference in a commercial installation. However, there is no guarantee that interference will not occur in a particular installation. If the Model 1186 does cause interference to radio or television reception, which can be determined by disconnecting the unit, the user is encouraged to try to correct the interference by one or more of the following measures: moving the computing equipment away from the receiver, re-orienting the receiving antenna and/or plugging the receiving equipment into a different AC outlet (such that the computing equipment and receiver are on different branches).

1.2 CE NOTICE

The CE symbol on your Patton Electronics equipment indicates that it is in compliance with the Electromagnetic Compatibility (EMC) directive and the Low Voltage Directive (LVD) of the European Union (EU). A Certificate of Compliance is available by contacting Technical Support.

1.3 SERVICE

All warranty and non-warranty repairs must be returned freight prepaid and insured to Patton Electronics. All returns must have a Return Materials Authorization number on the outside of the shipping container. This number may be obtained from Patton Electronics Technical Service at:

tel: **(301)975-1007**
email: **support@patton.com**
www: **http://www.patton.com**

NOTE: Packages received without an RMA number will not be accepted.

Patton Electronics' technical staff is also available to answer any questions that might arise concerning the installation or use of your Model 1186. Technical Service hours: **8AM to 5PM EST, Monday through Friday.**

2.0 GENERAL INFORMATION

Thank you for your purchase of this Patton Electronics product. This product has been thoroughly inspected and tested and is warranted for One Year parts and labor. If any questions or problems arise during installation or use of this product, please do not hesitate to contact Patton Electronics Technical Support at (301) 975-1007.

2.1 FEATURES

- ITU G.703/G.704 (E1) transport over Multi-Mode fiber
- Full duplex operation over a single string of fiber
- Multi-Mode fiber with max distance 2.5km (1.5 miles)
- Two fiber connection options available: ST or SMA
- 120 Ohm (RJ-48C) and 75 Ohm (dual coax) G.703/G.704 terminations
- Clocking Options: Internal, Network (G.703/G.704) or Receive Recover (fiber link)
- Optional AMI or HDB3 G.703/G.704 data coding
- Six Front Panel LED status indicators: Fiber line, E1 line, LOS, TM, ER, and NS
- Testing/troubleshooting tools: V.54 compliant local/remote loop backs, V.52 compliant 511/511E test patterns

2.2 DESCRIPTION

The Patton Electronics *Model 1186* offers the ability to extend E1 (G.703/G.704) service over Multi-Mode fiber. A pair of 1186 Multi-Mode Fiber Modems provides G.703/G.704 Network "extension" between remote locations (Figure 1).

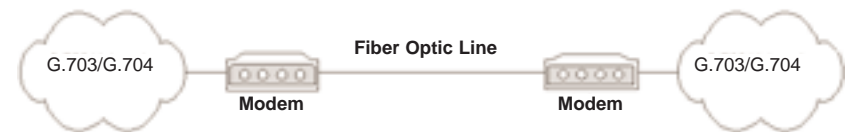


Figure 1. Network extension between remote locations

The Model 1186 is designed to transmit/receive G.703/G.704 data over one string of fiber. The Model 1186 allows transmission over Multi-Mode fiber with distances up to 2.5 km (1.5 miles). The clocking options for the Model 1186 include Internal, Network (from G.703/G.704 Network) or Receive Recovered clock (from fiber line).

The Model 1186 also incorporates V.54 compliant local/remote loopbacks and V.52 compliant 511/511E test patterns. Front panel switches activate test patterns and loopbacks. LED status indicators monitor the fiber and G.703/G.704 links. The Model 1186 is available with an AC or DC power supply and is supported by a wide range of applications and power supply environments.

3.0 CONFIGURATION

The Model 1186 is equipped with eight DIP switches, which allow configuration of the unit for a wide variety of applications. This section describes the switch location and explains all possible configurations.

3.1 CONFIGURE THE HARDWARE DIP SWITCHES

The 8 external dip switches are accessible from the underside of the Model 1186 (See Figure 2, below).

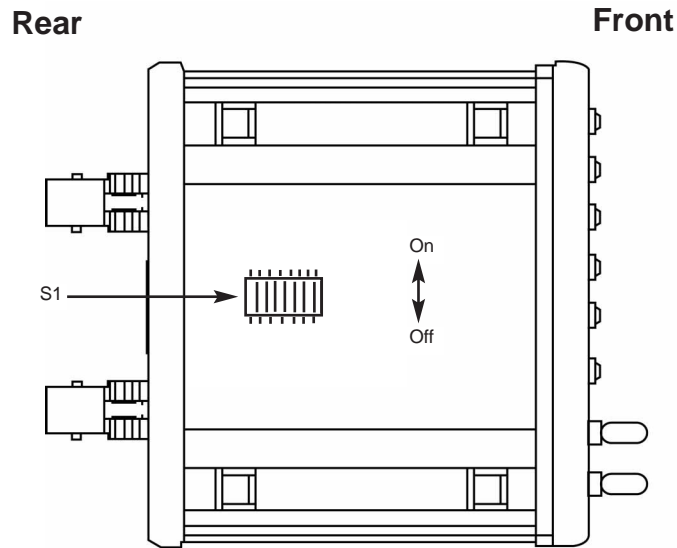


Figure 2. Underside of Model 1186, showing location of the DIP Switches

Figure 3 shows the orientation of the DIP switches in the “ON” and “OFF” positions.

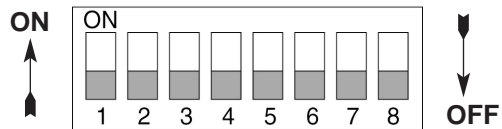


Figure 3. Close-up of configuration switches

3.1.1 Configuration of Model 1186

Switches S1 through S8 may be used to configure clocking modes and line coding. Default settings of the switches are shown in the table below. A description of the switch options follows the table.

Position	Function	Default Setting
S1	Clock Source	ON
S2	Clock Source	ON
S3	Line Coding	OFF
S4	Line Coding	OFF
S5	Reserved for Future Applications	OFF
S6		
S7		
S8		

Switches S1 and S2: Clock Mode

Use Switches S1 and S2 to determine clock mode of the 1186.

S1	S2	Setting	Description
On	On	Internal	Transmit clock generated internally
On	Off	Receive Recover	Transmit clock derived from the line
Off	On	Network	Transmit clock derived from G.703/G.704 equipment interface
Off	Off	Not Used	Internal use only

Note: The Model 1186 units are intended to work in pairs. When setting the clock modes for the Model 1186 units, one end of the link must be set for Receive Recover and the other end must be set for either Internal or Network.

Switch S3 and S4: Line Coding Options

Use Switches S3 and S4 to determine whether the G.703/G.704 line coding is HDB3 or AMI (for older telecommunications equipment). The line coding must be the same line coding prescribed by the NAP (Network Access Provider). Most applications will use HDB3.

High Density Bipolar 3 (HDB3): In HDB3 coding, the transmitter deliberately inserts a bipolar violation when excessive zeros in the data stream are detected. The receiver recognizes these special vio-

data stream are detected. The receiver recognizes these special violations and decodes them as zeros. This method enables the network to meet minimum pulse density requirements. Use HDB3 unless AMI is required in your application.

Alternate Mark Inversion (AMI): AMI defines a pulse as a “mark,” a binary one, as opposed to a zero. In an E1 Network connection, signals are transmitted as a sequence of ones and zeros. Ones are sent as pulses, and zeros are sent as spaces, i.e., no pulse. Every other pulse is inverted from the previous pulse in polarity, so that the signal can be effectively transmitted. This means, however, that a long sequence of zeros in the data stream will cause problems, since the modem receiving the signal relies on the signal to recover the 2.048 Mbps clock.

If you must use AMI, ensure that the data terminal equipment connected to the unit provides a minimally acceptable pulse density. For this reason, there are advantages to using HDB3 instead. AMI coding does not inherently account for ones density. To meet this requirement, ensure that the data inherently meets pulse density requirements.

S3	S4	DTE Line Coding
Off	Off	HDB3
Off	On	Internal use only
On	Off	Internal use only
On	On	AMI

Switches S5 through S8: Reserved

Switches S5 through S8 are reserved for future applications and should be set to OFF.

3.1.2 Select RJ-48C or BNC Connectors

The Model 1193 is shipped configured for use with a BNC connection to the G.703/G.704 Network. If your Network connection is using BNC, skip this section.

Jumper Configuration

The Model 1186 has four internal jumpers: JP2, JP3, JP4 and JP5. These jumpers are used to match input/output impedance between the module and external line on the G.703/G.704 Interface. The jumper settings select either a BNC (75-ohm) or an RJ-48C (120-ohm) interface. Figure 4 below shows the top view of the printed circuit board (PCB) and the location of the jumpers.

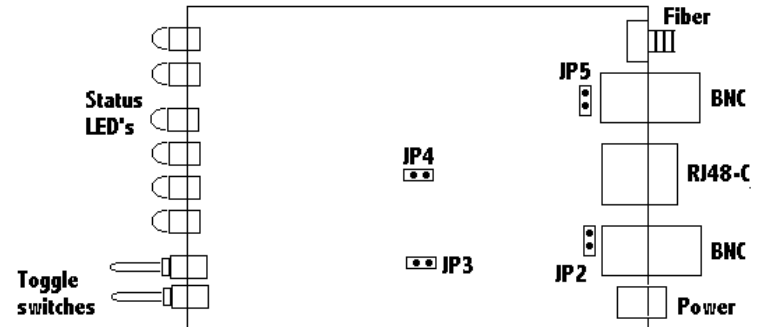


Figure 4: Top view of 1186 circuit board and location of jumpers

Open the Case

To open the case, insert a screwdriver into the slots and twist the screwdriver head slightly. The top half of the case will separate from the lower half of the case. Take caution not to damage any of the PC board mounted components.

Note: Electronic equipment is sensitive to ESD (electrostatic discharge). When you change the internal jumpers on the 1186, use a grounding strap to avoid damages. For more information call Patton Technical Support (301) 975-1007.

The following is a description of the jumper settings and the interface selection:

1. For a 75-ohm connection (BNC/coax), insert all jumpers (default).
2. For a 120-ohm connection (RJ-48C/twisted pair), remove all jumpers.

4.0 INSTALLATION

Once the Model 1186 is properly configured, it is ready to connect to the fiber interface, to the G.703/G.704 equipment, and to the power source. This section describes how to make these connections.

The power, G.703/G.704 and Fiber Line connections are located on the rear panel of the Model 1186. Figure 5, below, shows the location of each of these ports.

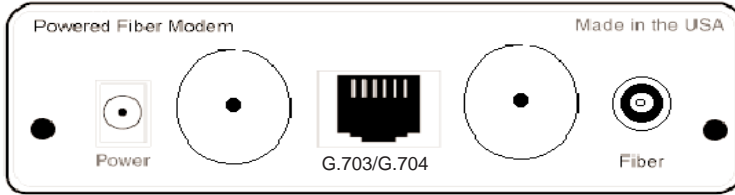


Figure 5. G.703/G.704 Interface and power connection ports

4.1 CONNECT THE G.703/G.704 NETWORK

There are two ways to connect to the G.703/G.704 Network. This section describes both options. After selecting the appropriate connection, set the internal jumpers as described in section 3.1.2 of this manual.

4.1.1 Connect Twisted Pair (120 Ohm) to G.703/G.704 Network

The Model 1186 is equipped with a single RJ-48C jack option for connections to a G.703/G.704 Network. If your G.703/G.704 Network terminates via an RJ-48C, use the diagram below (Figure 6).

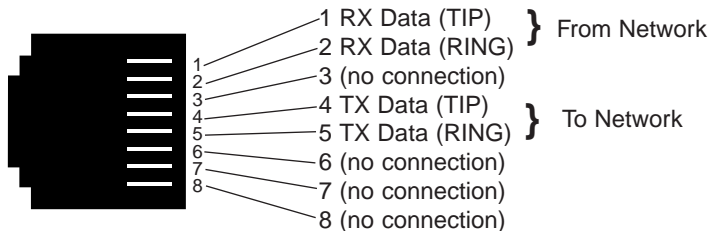


Figure 6. G.703/G.704 Network Interface.

4.1.2 Connect Coax Cable to the G.703/G.704 Network

The Model 1186 is also equipped with dual female BNCs (TX and RX) for connection to a 75 ohm dual coax G.703/G.704 Network interface. If your G.703/G.704 Network terminates via dual coaxial cable,

use the diagram below to make the proper connections. The connector pinout and signals are shown in Figure 7, below.

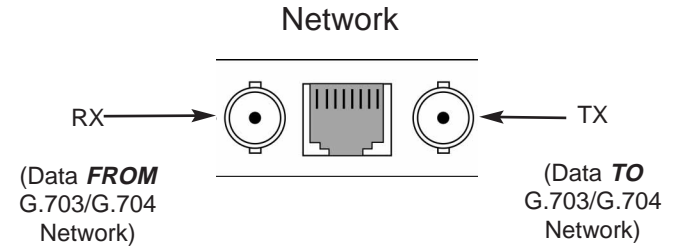


Figure 7. Fiber cable to G.703/G.704 Interface connection

4.2 CONNECT THE FIBER INTERFACE

The Model 1186 is designed to be connected to another Model 1186. The Model 1186 supports communication between G.703/G.704 equipment over one string of multi-mode fiber at distances up to 2.5 km (1.5 miles). One modem can connect to another on the end of a single string of fiber optic cable.

To connect two Model 1186s, use one string of 62.5/125 micron multi-mode fiber. The fiber connects to each Model 1186 using either an ST or an SMA connector.

Figure 8 below shows a close-up of both connector types.



Figure 8: Model 1186 SMA and ST multi-mode fiber connectors

4.3 POWER CONNECTION

4.3.1 Universal AC Power (100-240VAC)

The Model 1186 uses a 5VDC, 2A universal input 100-240VAC, power supply (center pin is +5V). The universal input power supply has a male IEC-320 power entry connector. This power supply connects to the Model 1186 by means of a barrel jack on the rear panel. Many international power cords are available for the universal power supply (Please refer to Appendix B for country-specific power cords).

The Model 1186 powers up as soon as it is plugged into an AC outlet. The unit does not have a power switch.

4.3.2 DC Power

The 36-60 VDC DC to DC adapter supplied with the DC version of the Model 1186 plugs in a DC source (nominal 48VDC) and plugs into the barrel power supply jack on the rear of the 1186. Please refer to Figure 9 to make the proper connection.



Figure 9. Connect DC power to the 48V-PSM DC power supply

WARNING! There are no user-serviceable parts in the power supply section of the Model 1186. Fuse replacement should only be performed by qualified service personnel. Contact Patton Electronics Technical Support at (301) 975-1007, via our web site at <http://www.patton.com>, or by e-mail at support@patton.com, for more information.

5.0 OPERATION

Once the Model 1186 is properly configured and installed, it should operate transparently. This sections describes power-up, reading the LED status monitors, and using the built-in loopback test modes.

5.1 POWER-UP

To apply power to the Model 1186, first be sure that you have read Section 4.3, and that the unit is connected to the appropriate power source.

Next, make sure that front panel switches are set to Normal condition. Then, plug provided power adapter (see section 4.3) first into the rear panel outlet of the Model 1186, and then into the acceptable power outlet (AC or DC depending on the model -UI or -DC). After both the local and remote Model 1186s are powered up, a synchronization process will occur to establish a link. The synchronization process should take only a few seconds (<5 sec). Any time one of the Models 1186 loses power (i.e., in a lightning storm), the local and remote units will re-synchronize before they can resume data transmission.

When the local and remote units have established a link and are passing reliable data, the following LED conditions will exist:

- Fiber = GREEN
- E1 = GREEN
- LOS = OFF
- NS = OFF
- ER = OFF
- TM = OFF

5.2 LED STATUS MONITORS

The Model 1186 features six front panel status LEDs that indicate the condition of the modem and communication link. Figure 10 shows the front panel location of each LED.

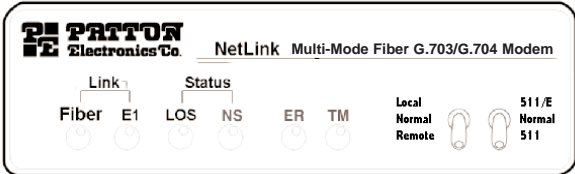


Figure 10. Model 1186 front panel

Functions of LEDs are as follows:

- Fiber** The green Fiber LED indicates reliable data on the fiber side
- E1** The green E1 LED indicates reliable data on the G.703/G.704 side
- LOS** The red LOS indicates that synchronization between modems has not been established. Blinking red LOS LED indicates the presence of coding errors
- NS** The red NS LED indicates that the signal on the fiber side is too weak to be detected, which can be due to any of the following reasons:
- break in the fiber optic cable
 - length of the fiber optic cable exceeds the maximum distance
 - problem with Fiber LED.
- ER** Flashing red ER LED indicates errors in 511 test pattern
- TM** The yellow TM LED indicates that modem is in a test mode (Local/Remote Loopback or 511/511E test pattern). Opaque TM indicates normal operation.

5.3 TEST MODES

The following section describes the test patterns and loopbacks used in the Model 1186. The Model 1186 offers V.54 compliant local/remote loopback tests, plus a built-in V.52 BER test pattern generator to evaluate the condition of the modems and the communication link. These tests can be activated physically from the front panel.

5.3.1 Local Loopback

The local loopback test checks the operation of the local Model 1186, and is performed separately on each unit. The following section describes how to perform a local loopback test between the Network and a local connection.

Any data sent to the local Model 1186 in this test mode will be echoed (returned) back to the user (see Figure 11). If two Model 1186 units are linked when the LAL is activated, data sent from the remote modem will also be looped back to the remote terminal equipment.

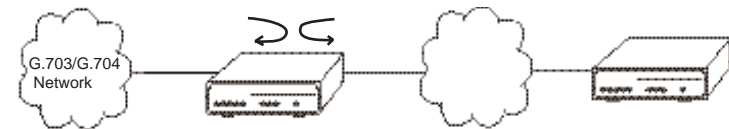


Figure 11. Local Loopback Diagram

To test the local connection, follow these steps:

1. Activate LAL by moving the front panel toggle switch UP to "Local". Once the Local Loopback is activated, the Model 1186 transmit output will be connected to its own receiver. The TM LED will light up.
2. Perform a BER (Bit Error Rate) test on each unit using a separate BER tester. If the BER test equipment indicates no faults, but the data indicates a fault, follow the manufacturer's checkout procedures for the data terminal. Also, check the interface cable between the terminal and the Model 1186. The BER test can also be performed using a built-in 511/511E pattern generator. (See section 5.3.3 on how to use the built-in 511/511E pattern generator.)
3. Upon completion of the LAL test, return the front panel switch to the NORMAL position. The TM LED should turn off.

5.3.2. Remote Digital Loopback (RDL)

The Remote Digital Loopback test checks the performance of both the local and remote Model 1186s, and the communication link between them. In this test, any characters sent from the originating device to the remote unit will be returned (see Figure 12). Any data sent from the remote DTE will be ignored.

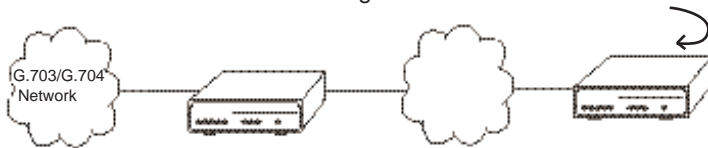


Figure 12. Remote Loopback Diagram

To perform a RDL test, follow these steps:

1. Activate RDL by moving front panel toggle switch DOWN to "Remote". The TM LED on both local and remote units will light up.
2. Perform a BER (Bit Error Rate) test on the system, using BER tester on the local end. BER test can also be performed using built-in 511/511E pattern generator. (See section 5.3.3 on how to use the built-in 511/511E pattern generator.)
3. If the BER test equipment indicates a fault and the Local Analog Loopback test was successful for both Model 1186s, there may be a problem with the line between the units.
4. Upon completion of the RDL test, return the front panel switch to the NORMAL position. The TM LED should turn off on both local and remote units.

5.3.3. V.52 Test Pattern Generator

To use the V.52 BER test in conjunction with the Local or Remote Loopbacks, follow these instructions:

1. Locate the "511/511E" toggle switch on the front panel of the Model 1186 and move it UP. This activates the V.52 BER test mode and transmits a "511" test pattern into the loop. If any errors are present, the local modem's red "ER" LED will blink intermittently.

2. If the above test indicates no errors, move the V.52 toggle switch DOWN, activating the "511/E" test with errors present. If the test is working properly, the local modem's red "ER" LED will blink once every two seconds. A successful "511/E" test will confirm that the link is in place, and that the built-in "511" generator and detector are working properly.

Note: When the unit is set for Network Clock Mode, the unit will derive its timing from the G.703/G.704 Interface. Failure to connect to G.703/G.704 may result in bit errors during the 511 or 511/E test.

APPENDIX A

PATTON ELECTRONICS MULTI-MODE FIBER MODEM WITH G.703/G.704 INTERFACE

SPECIFICATIONS

Clocking Modes:	Network (G.703/G.704), Internal, Receive Recover
Line Rate:	2048 kbps
Diagnostics:	V.52 compliant (511/511E) pattern generator and detector with error injection mode. Remote Loopback (toward fiber line) and local loopback (toward G.703/G.704 network) controlled by a single front panel switch
LED Status:	The following LEDs are displayed on the front panel: Fiber: The green Fiber LED indicates reliable data on the fiber side E1: The green E1 LED indicates reliable data on the G.703/G.704 side LOS: The red LOS indicates that synchronization between modems has not been established. Blinking red LOS LED indicates the presence of coding errors NS: The red NS LED indicates that the signal on the fiber side is too weak to be detected ER: Flashing red ER LED indicates errors in 511 test pattern TM: The yellow TM LED indicates that modem is in a test mode (Local/Remote Loopback or 511/511E test pattern). Opaque TM LED indicates normal operation.
Configuration:	Externally accessible dip switches
Power:	5 VDC from external desk top power supply, 90-260VAC, 50-60 Hz (Universal Input), 10W or -48 VDC
Compliance:	FCC Part 15, CE, CTR12
Transmission Line:	Single fiber
Line Coding:	8B10B
Line Interface:	Transformer coupled, 1500 VAC isolation
Fiber Physical Connection:	One string of 62.5 M25 mm fiber with SMA or ST connectors

G.703/G.704 Specific

Interface:	Female Dual Coaxial 75 ohm or Female RJ-48C 120 ohm
Line rate:	2.048 Mbps
Line coding:	AMI or HDB3 (HDB3 is the default)
Isolation:	1500 Vrms
Physical Connection:	pin 1 Rx Data + pin 2 Rx Data - pin 4 Tx Data - pin 5 Tx Data - pins 3, 6, 7, 8 no connection

APPENDIX B

PATTON ELECTRONICS MODEL 1186 FACTORY REPLACEMENT PARTS AND ACCESSORIES

<u>Patton Electronics Model #</u>	<u>Description</u>
1186	multi-mode fiber optic modem
1186RC.....	multi-mode fiber rack card modem
48V-PSM.....	DC Power Supply Module
08055DCUI	100-240VAC (+5V \pm 5% reg. DC/2A) Universal Input Adapter
0805EUR	European Power Cord CEE 7 ("A")
0805UK	United Kingdom Power Cord ("D")
0805US	American Power Cord ("K")
0805AUS	Australia/New Zealand Power Cord ("C")
0805DEN.....	Denmark Power Cord ("E")
0805FR.....	France/Belgium Power Cord ("F")
0805IN.....	India Power Cord ("G")
0805IS.....	Israel Power Cord ("H")
0805JAP	Japan Power Cord ("J")
0805SW.....	Switzerland Power Cord ("L")
07M1186.....	User Manual