

WorkSpace editor under QNX Neutrino 6.4.0 OS Installation manual

1. Install procedure

It is quite easy.

Download the "ws.zip" file. Unzip it.

Copy both files – ws.gzip and install_ws - into a folder, like – tmp.

Installation:

Open a new terminal window from Shelf.

```
# cd /tmp
```

```
# install_ws
```

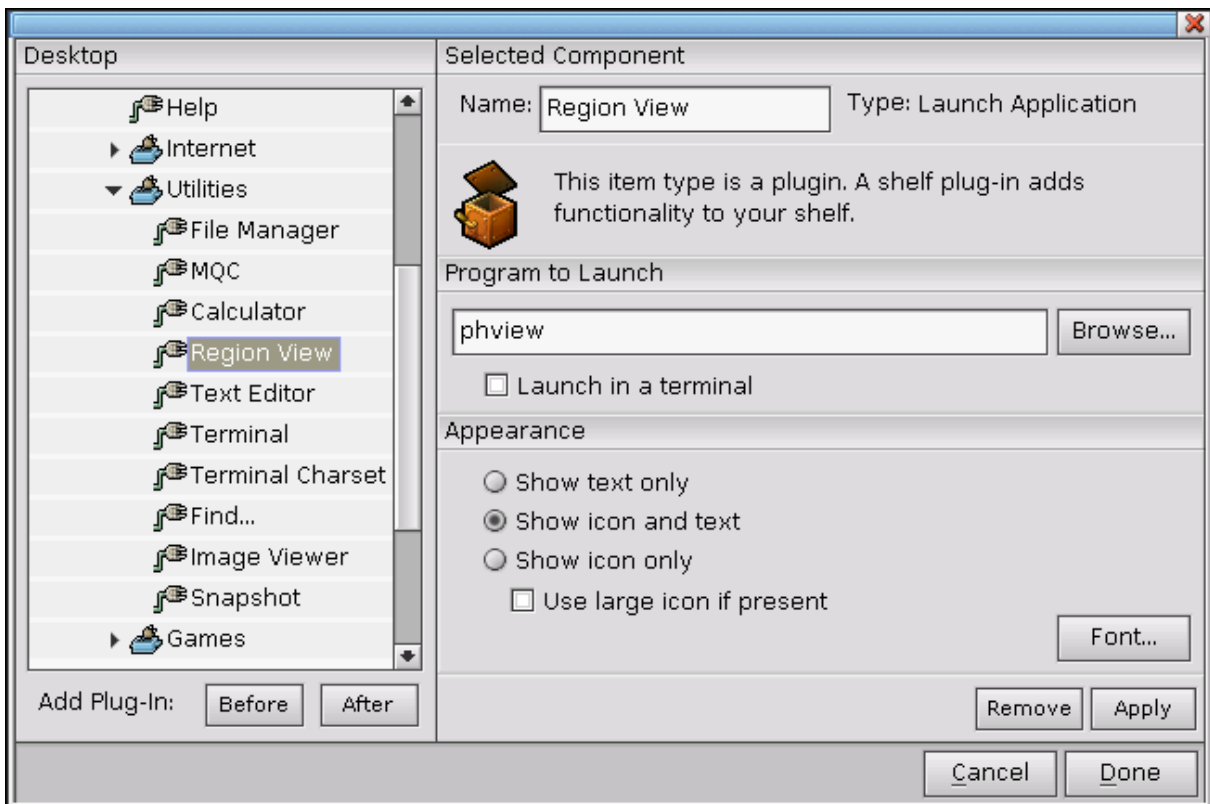
The extracting of files and copy into proper folders will be done by automatically.

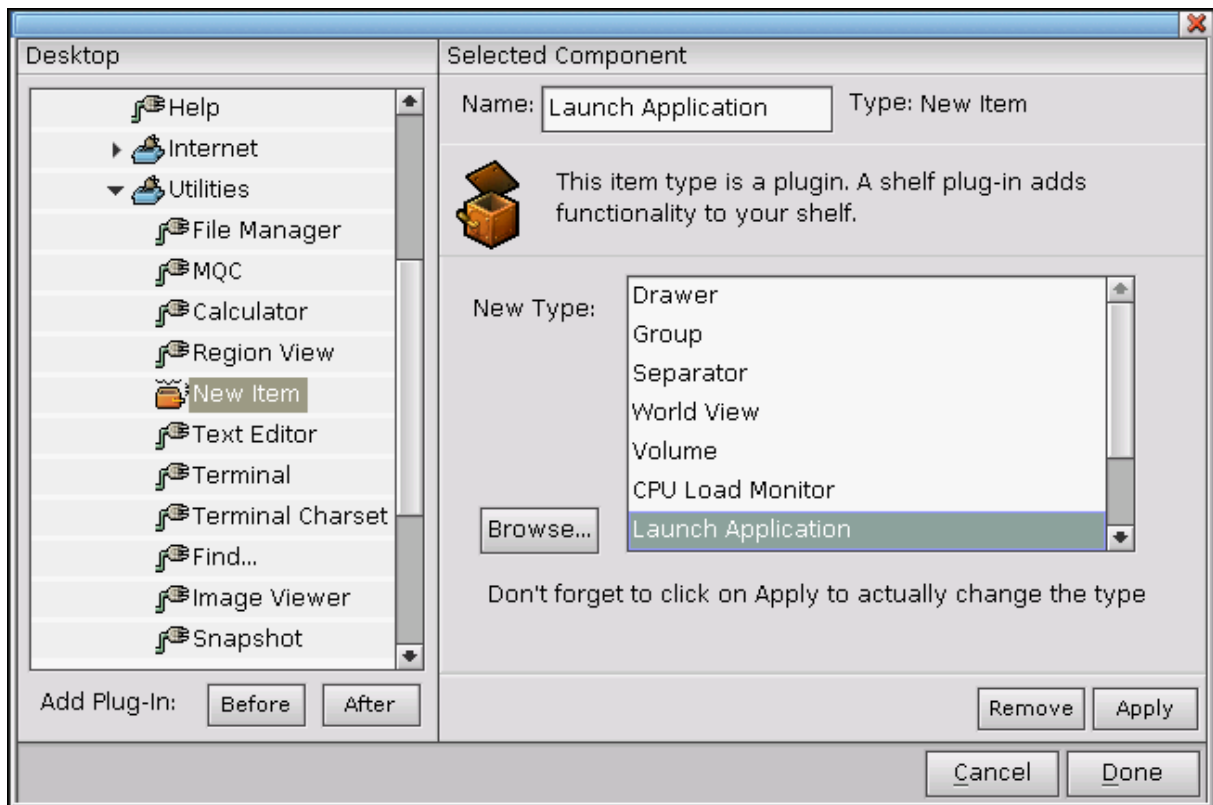
2. Create an WorkSpace starter icon onto Shelf

Open the Shelf manager from

Launch -> Configure -> Shelf

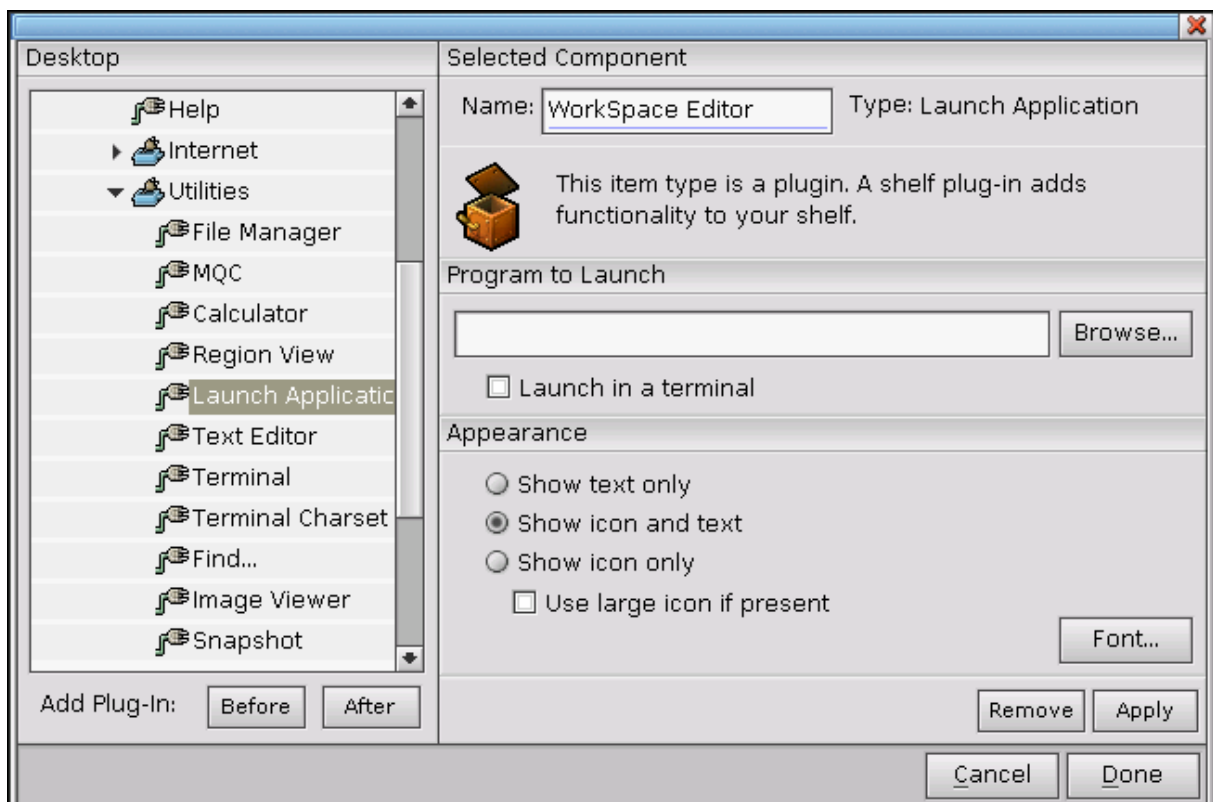
Select Region View plug-in symbol and push the button "After".





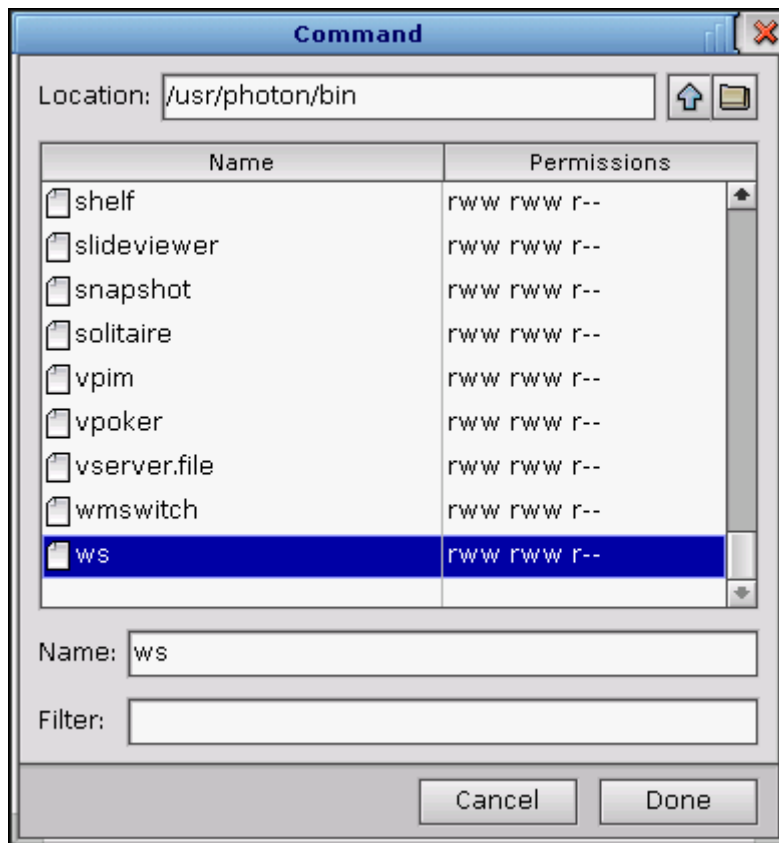
Now we have a new, empty item.

Select "Launch Application".
Write into name field: WorkSpace Editor
Click Apply.



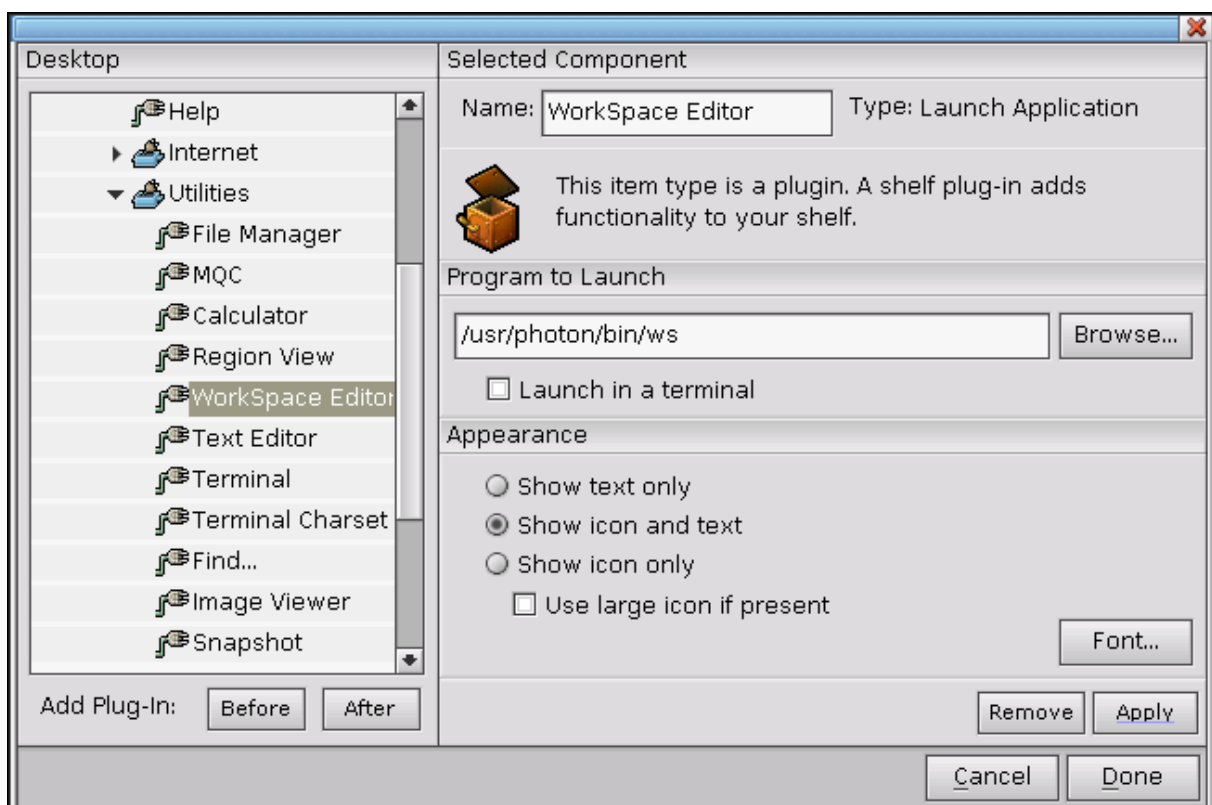
Click Browse.

Select ws application in the /usr/photom/bin folder.

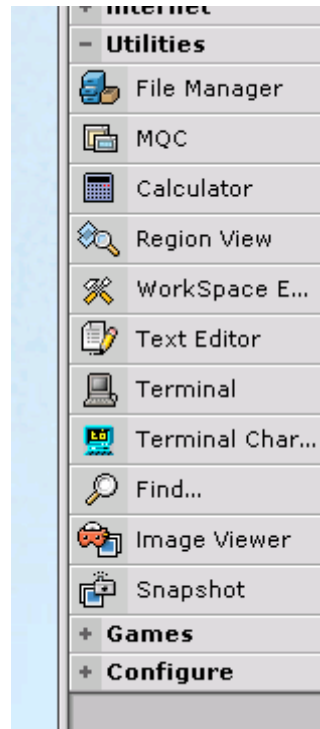


Click Done.

Now we have to see this page.

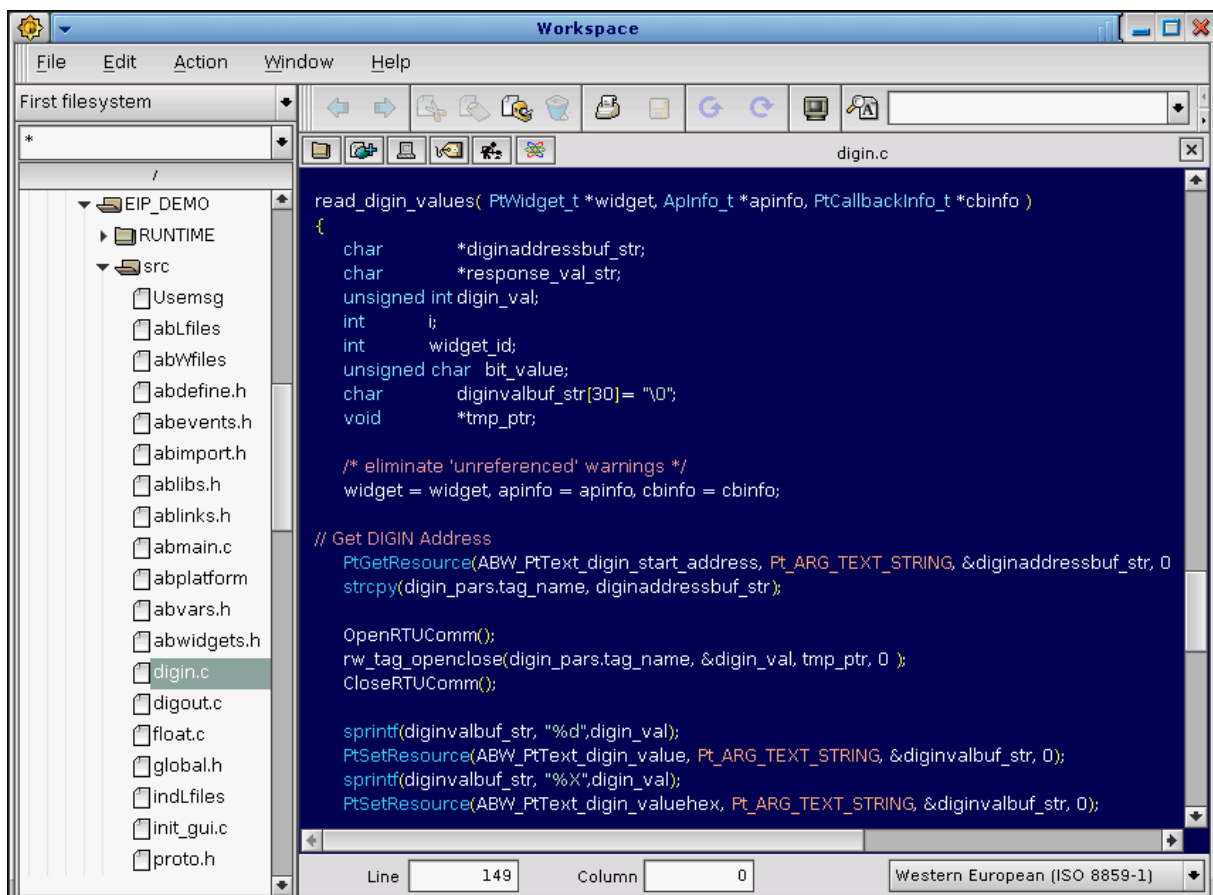


Click Apply.



We will see the WorkSpace editor's starter bar on the Shelf.
Push the WorkSpace bar by mouse.

The WorkSpace editor application:



Jozsef Kovacs
Robert Kovacs
info@realtimecontrol.hu
coldwave@freemail.hu



RTC Automation Ltd.
Authorised QNX Reseller
Budapest,
HUNGARY
www.realtimecontrol.hu

2009.04.26.