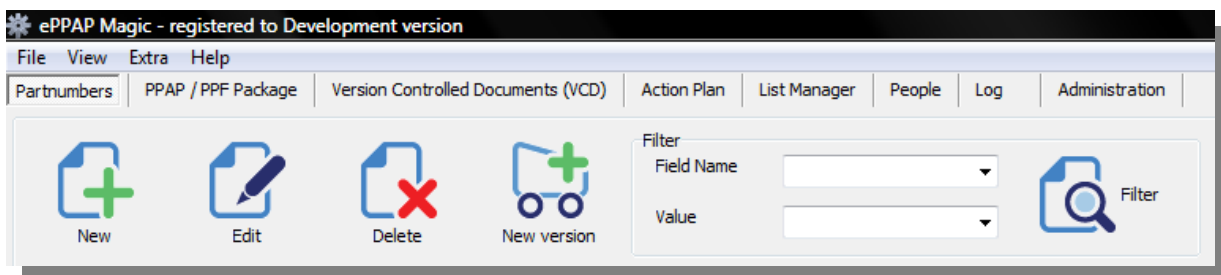


# User Guide

## ePPAP-Magic

### Quality Management Software for Production Part Approval Process support



#### Foreword

*Within automotive industry, it is required to submit initial samples to the customer in order to assure, that all requirements have been understood and will be followed during the next deliveries. This Quality Management Application is able to support this task by managing everything and storing all relevant information in one place. With this application, your company will be able to build up a complete system for your and customer satisfaction. This system is able to manage products, PPAP / PPF / EMPB packages, version controlled documents, action plans and users. With the built-in flexible list and user manager any company requirement can be configured within a few minutes. Using the change management function of the version controlled document module, the Quality Engineer, responsible for product approval process, will be able to replace old document version in the existing packages to the new one by a few clicks. If your company has no a reliable tool for this product approval process management or thinks about to change that, then it is a must to try ePPAP-Magic now.*

Issue date: 29-10-2011

*Pictures in this document may differ from the actual pictures of the last release.*

## CONTENT

























1. Installation
2. Registration
3. Settings
4. Structure
5. Products / part numbers
6. PPAP/PPF package
7. Version Controlled Documents
8. Action Plan
9. List Manager
10. People
11. Log
12. Administration
13. User Management
14. Upgrades
15. Contacts
16. Copyright
17. Readme.txt

# 1. Installation

You can install this application in the following ways:

- **setup install** including an online upgrade function (recommended to install this at least on one computer per company to be sure that new patches and upgrades will not be ignored)
- **portable install** does not require a typical installation. You can copy all files from the downloaded file into a specified location and create the necessary shortcuts, rights etc. Finally you can start the application with ppapmagic.exe. In case of upgrades, the readme.txt file always contains the list of the files need to be upgraded to the new version.

Default content of a new installation

	attachment	2010.10.24. 16:22	Fájlmappa	
	backup	2010.10.24. 16:22	Fájlmappa	
	database	2011.10.08. 11:17	Fájlmappa	
	empty_db	2011.10.08. 11:17	Fájlmappa	
	import	2010.10.31. 18:01	Fájlmappa	
	language	2011.10.08. 9:37	Fájlmappa	
	packages	2010.11.13. 10:35	Fájlmappa	
	vcdocuments	2010.11.13. 19:03	Fájlmappa	
	actiongrd.dat	2011.10.15. 20:01	DAT fájl	2 KB
	error.log	2010.10.24. 16:27	Notepad++ Docu...	1 KB
	listgrd.dat	2011.10.15. 20:00	DAT fájl	1 KB
	loggrd.dat	2011.10.08. 19:40	DAT fájl	1 KB
	peoplegrd.dat	2011.10.15. 20:00	DAT fájl	1 KB
	ppapmagic.exe	2011.10.12. 6:09	Alkalmazás	3 441 KB
	ppapmagic.ini	2011.10.08. 15:56	Notepad++ Docu...	1 KB
	ppaptable.ini	2010.11.13. 8:06	Notepad++ Docu...	1 KB
	productgrd.dat	2011.10.15. 20:03	DAT fájl	2 KB
	Readme.txt	2011.10.08. 19:20	Notepad++ Docu...	6 KB
	remarks.dat	2011.10.08. 15:55	DAT fájl	1 KB
	servers.txt	2010.10.31. 18:44	Notepad++ Docu...	1 KB
	usergrd.dat	2011.10.10. 19:26	DAT fájl	1 KB
	usermanual.pdf	2011.10.11. 19:44	Adobe Acrobat D...	863 KB
	vcdgrd.dat	2011.10.15. 20:02	DAT fájl	1 KB
	vcdstoregrd.dat	2011.10.15. 20:01	DAT fájl	1 KB

1. picture



**Note :** please note that in v2.0 the product database has changed from **product.dbf** to **product\_v1.dbf**! In order to assure the data transfer into the new database, an “Extra” menu has been added to perform this importing.

## Online Upgrade

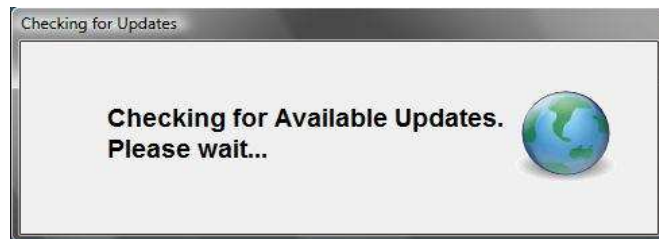
If online upgrade function is available and adjusted on your computer

- ePPAP-magic will inform you about the availability of the new version,



2. picture

- Clicking on the Download & Install Now! Button the upgrade will be performed right away after downloading of the new version.
- If automatic upgrade checking function is not set, the user is able to check for updates by using the given function (check for updates) in the Help menu. In this case the following screen will display:



3. picture

- If now update is available the user will be notified by the following message



4. picture

- In case of availability of new update, the screen, described above will be displayed. In special cases, so called patches/hotfixes will be released which will be appeared on a different screen, but the procedure is the same as described here.

## Uninstallation

You can uninstall ePPAP-Magic setup version by three different methods

- use link which can be found in the Start menu,
- launch uninstall exe file which can be found in the setup folder
- use windows Add/Remove Programs function.

## 2. Registration

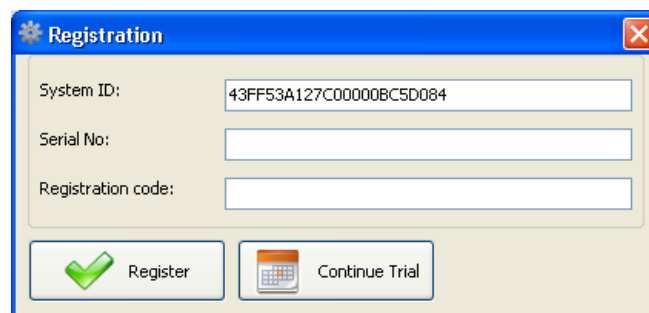
Without registration, the product database only allows to enter maximum 10 records and displays a nag screen.



5. picture

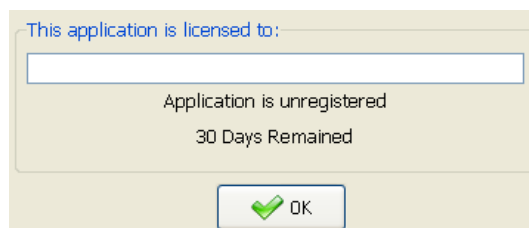
Two types of registration exist:

- **computer specific registration** : in this case after getting the given computer specific system ID, the serial No and Registration code are provided by email. Please contact with the developer for computer specific code.



6. picture

On the About form you can see the days remained



7. picture

- **company registration** : in this case a company.lic file is provided which will register all copies of this application. This registration is always valid until a specific date. In order to get this file you need to provide following information, which will be displayed in all registered copies:
  - company name
  - name of the person who registered this product at the given company



**Note** : company licence is only provided to a person who has already contributed to the development, for example giving useful development idea, reporting bug, made translations etc. In case of company licence, the user defined company name is not used.

### 3. Settings

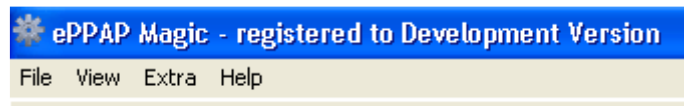
Company Logo and Company Name definitions

- Logo – define a jpg file with the correct size.
- Company – write the name of your company in.

*These settings can be obtained by right clicking on the picture.*



8. picture



9. picture



**Note:** company name will only be available in registered version!

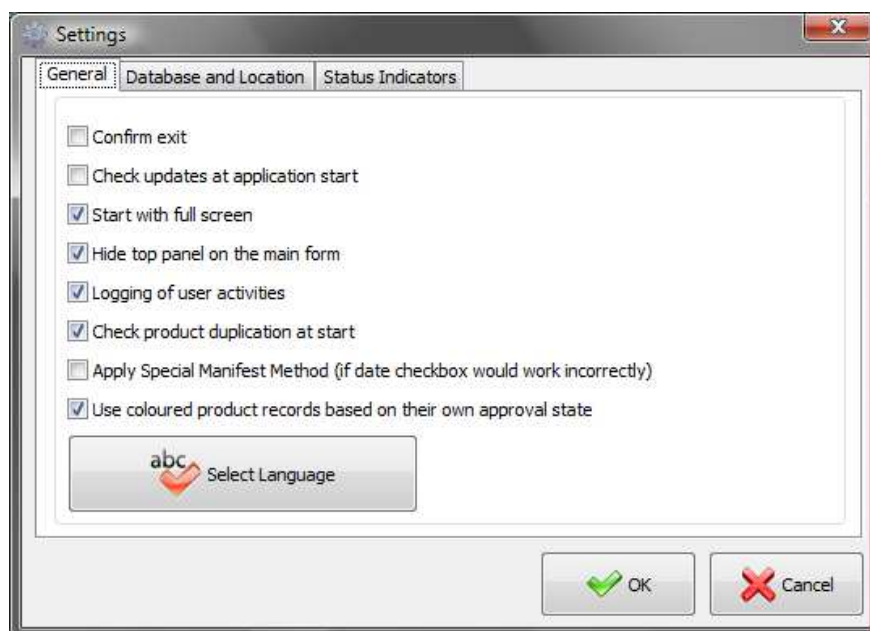
#### *General settings*

On this page you can set some basic parameters.

As these options speak for itself, they are not described in details.



**Note:** in case of some computers, mainly with no XP operating system, it is possible that date field checkbox does not work correctly. In this case the “Apply Manifest Method” can correct it.

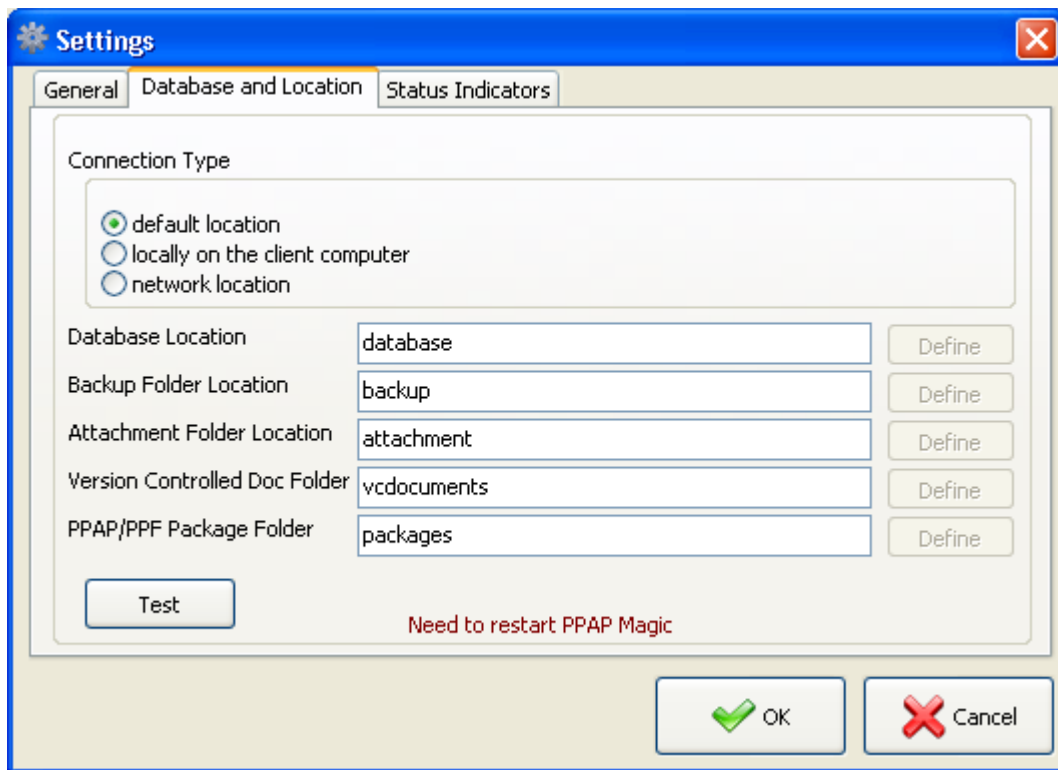


10. picture

## Database and Location

In default the application works with files and folders within its own folder. But, in case of necessity, it is possible to define other two places.

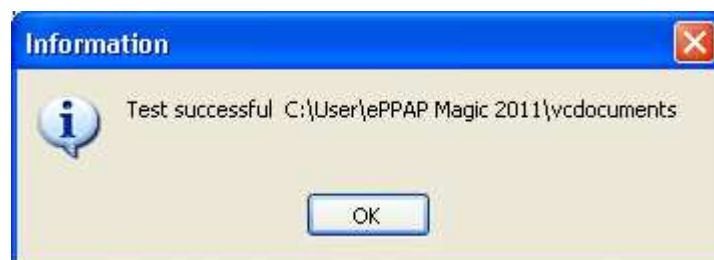
- out of the installation place, but on the same computer
- on a network location.



11. picture



**Note:** it is highly recommended to test the correct location of the five mandatory folders in order to assure a correct operation. If the specification is correct, the following message confirms that.



12. picture

## Status Indicators

On this page you can specify three statuses of the PPAP/PPF packages.



**Note:** it is highly recommended to set them before starting the daily work with this application.

The 'Settings' dialog box has three tabs: 'General', 'Database and Location', and 'Status Indicators'. The 'Status Indicators' tab is active, showing three rows of status indicators. Each row has a text label on the left and a dropdown menu on the right. The first row is 'Approved PPAP/PPF/EMPB/ISA' with a dropdown set to 'Approved'. The second row is 'Interimly approved PPAP/PPF/EMPB/ISA' with a dropdown set to 'Interim'. The third row is 'Rejected PPAP/PPF/EMPB/ISA' with a dropdown set to 'Rejected'. At the bottom of the dialog are 'OK' and 'Cancel' buttons.

13. picture

## Other settings

**Data table configuration** → right click on the table → Administration → Table Setup

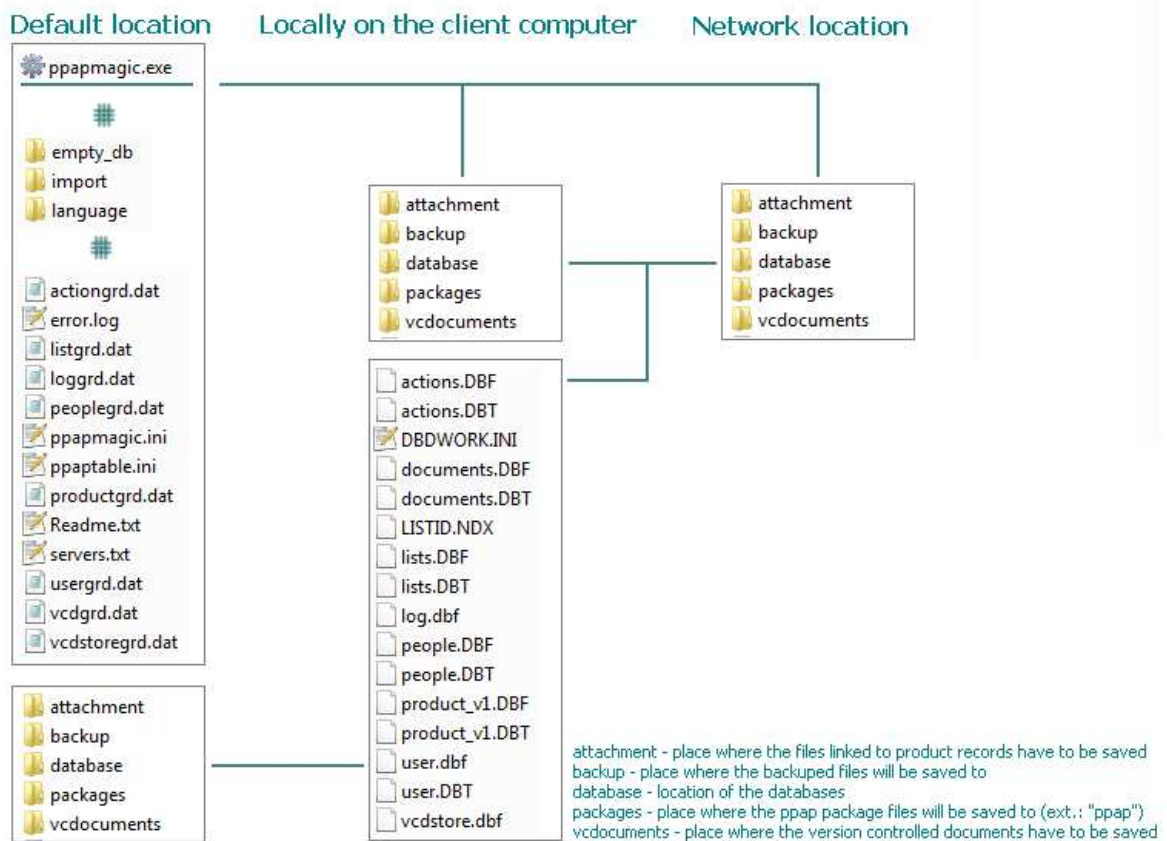
The 'Grid setup' dialog box has a list of fields on the left, each with a checkbox. The fields are: S\_FLAG : S\_FLAG, A\_FLAG : A\_FLAG, PARTNUMBER : PARTNUMBER, VERSION : VERSION, STATUS : STATUS, NAME : NAME, CUSTOMER : CUSTOMER, PPAPLEVEL : PPAPLEVEL, SUBMREASON : SUBMREASON, ACTIVE : ACTIVE, PREFERENCE : PREFERENCE, DREFERENCE : DOCUMENT RI, RECID : RECID, CONTACT : CONTACT, CREATEDBY : CREATEDBY, CREATEDON : CREATEDON, APPROVEDBY : APPROVEDBY, and APPROVEDON : APPROVEDON. The 'Title' section on the right has a 'Caption' field set to 'S\_FLAG', an 'Alignment' dropdown set to 'center', a 'Background' dropdown, and a 'Font' field set to 'Tahoma, 8'. The 'Data' section has an 'Alignment' dropdown set to 'center', a 'Background' dropdown, a 'Font' field set to 'Tahoma, 8', and a 'Width' field set to '7 characters'. At the bottom are 'Apply to All', 'OK', and 'Cancel' buttons.

14. picture



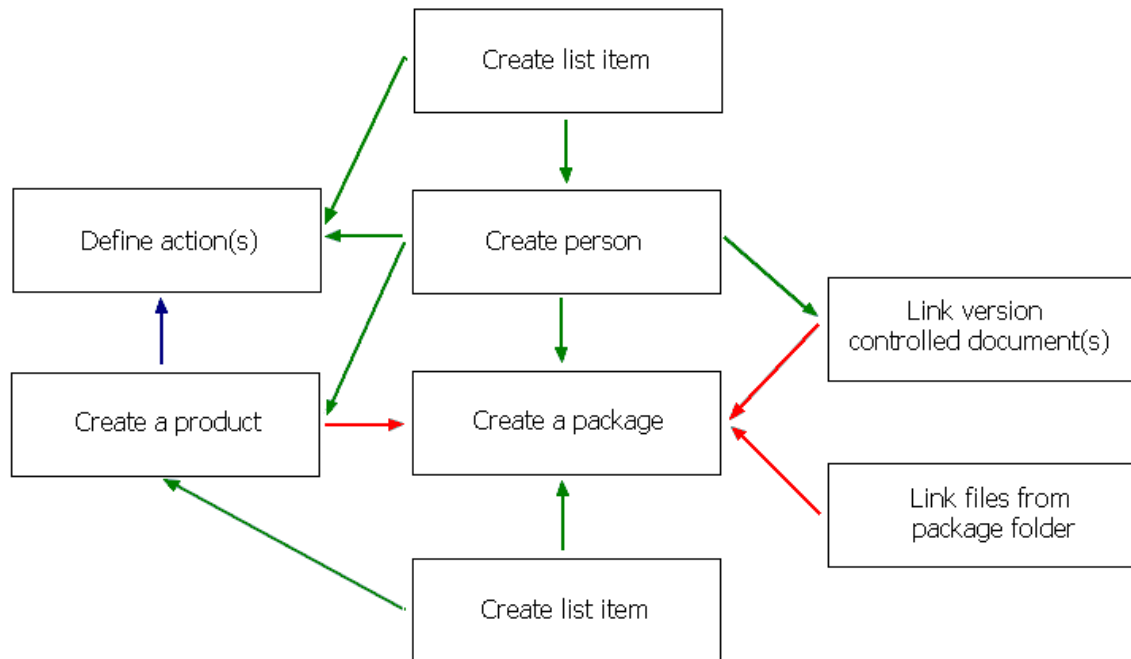
## 4. Structure

### Installation locations



15. picture

### Default process to create a part number and relevant records



16. picture

Red-main process, green-support process, blue-optional process

## 5. Products / part numbers

### Main screen contents

- buttons
  - i. new product
  - ii. edit product
  - iii. delete product
  - iv. product new version
  - v. filter – *value list is filled out by selecting the field name. By clicking on the filter button only the records meet with the selection criteria will be displayed.*
  - vi. attachment – *active when file is defined and available*
  - vii. PSW - *active when file is defined and available. Button picture changes according to the approval state of the product.*
- data table
- bottom bar
  - i. all / active / inactive filter - *by clicking on the given status only the records meet with the selection criteria will be displayed.*
  - ii. search – *with this tool you are allowed to search in the database for strings*
  - iii. action status indicator

The screenshot displays the ePPAP Magic software interface. At the top, there is a menu bar with options: File, View, Extra, Help. Below the menu bar is a toolbar with icons for New, Edit, Delete, and New version. A filter section is visible with a 'Filter' button and a 'Field Name' dropdown. The main area contains a data table with the following columns: S\_FLAG, A\_FLAG, PARTNUMBER, VERSION, STATUS, NAME, CUSTOMER, PPAPLEVEL, SUBREASON, ACTIVE, PREFERENCE, and DOCUMENT REFERENCE. The table has three rows of data. The bottom bar includes a 'Displayed records (Activity)' section with radio buttons for All, Active, and Inactive. It also features a search icon, action counts (All actions: 0, Open action(s): 0, Expired action(s): 0), a notes field, and an Exit button.

S_FLAG	A_FLAG	PARTNUMBER	VERSION	STATUS	NAME	CUSTOMER	PPAPLEVEL	SUBREASON	ACTIVE	PREFERENCE	DOCUMENT REFERENCE
✓		0.000.0000-1	1	Approved					True		
✗		1.111.1111-1	1	Interim					True		
✗		2.222.2222-1	1	Rejected					True		

17. picture



**Note:** be careful, when using the data table special commands (part number modification and inactive record status change started from right click menu) because it can cause serious malfunction!

Product form contains two pages, one for product information and one for additional details.

Red marked fields are mandatory to fill out.

18. picture

19. picture



**Note:** in case of missing item from the list, you can add new element to them by clicking on the bottom buttons, “Add list item” or “Add person”.



**Note:** file attachment link is checked by the application and accepted if the file location is correct. It is not allowed to link any file out of the application owned folders.



**Note:** in case of inactive product, modification of the given record is not allowed.

If new version creation is started, the application will ask a confirmation what to do with the original record. It is recommended to make that inactive, in order to avoid the duplication of valid part numbers at the same time.

20. picture

**IT IS VERY IMPORTANT TO SELECT AN ACTIVE PRODUCT, AS THIS IS A REQUIREMENT FOR OTHER MODULES, WHICH CAN ONLY WORK IF ACTIVE PRODUCT IS DEFINED AND INDICATED IN THE STATUS BAR AT THE BOTTOM!**

## 6. PPAP/PPF package

Main screen contents

- big buttons
  - i. new item – *add new item to the PPAP/PPF package*
  - ii. edit item
  - iii. create directory – *all product should have a folder named with product name and version, which contains the PPAP/PPF documents*
  - iv. save as template – *actual content of PPAP/PPF package will be saved into the database folder with “ppaptemp” extension*
  - v. load template – *load saved template into the data table by overwriting the actual content*
  - vi. open selected file
  - vii. open pack folder – *open the selected package folder. If product number specific folder does not exist, it will be created.*
  - viii. make ZIP package – *marked items will be packed into a zip file in the product version folder (RAR and PDF functions are still under development)*
- small buttons
  - i. delete row
  - ii. row up
  - iii. row down
  - iv. load “ppap” file
  - v. save “ppap” file – *actual content will be saved into the root “package” folder with “ppap” extension.*



**Note:** in case of inactive product, the package item operations are not allowed.

sPPAP Magic registered to Development Version

File View Extra Help

Partnumbers | PPAP / PPF Package | Version Controlled Documents (VCD) | Action Plan | List Manager | People | Log | Administration

New Item Edit Item Create Directory Save as Template Load Template Open Selected File Open Pack Folder Make ZIP package Make RAR package Make PDF package

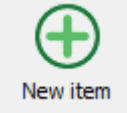


base package: C:\User\PPAP Magic 2011\packages\0.000.0000-1\_1\_ppap

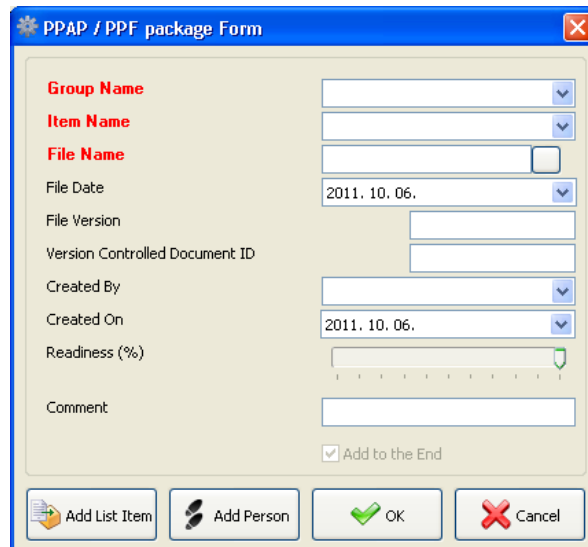
Increment	Marked	GroupName	ItemName	FileName	FileDate	FileVersion	VCD_ID	CreatedBy	CreatedOn	% Complete	Comment
1	<input type="checkbox"/>	Design Records	Separator page	\1_PPAP_4th_Drawing.pdf	2010.11.13.	1	vcd_1173930_1	Default	2010.11.13.	100%	
2	<input type="checkbox"/>	Engineering Change Document	Separator page	\2_PPAP_4th_Engineering Chang...	2010.11.13.	1	vcd_117408_1	Default	2010.11.13.	100%	
3	<input type="checkbox"/>	Customer Engineering Approval	Separator page	\3_PPAP_4th_Customer Engineeri...	2010.11.13.	1	vcd_1174046_1	Default	2010.11.13.	100%	
4	<input type="checkbox"/>	Design FMEA	Separator page	\4_PPAP_4th_Design FMEA.pdf	2010.11.13.	1	vcd_117411_1	Default	2010.11.13.	100%	
5	<input type="checkbox"/>	Measurement System Analysis	Separator page	\8_PPAP_4th_Measurement Syst...	2010.11.13.	1	vcd_1174232_1	Default	2010.11.13.	100%	
6	<input type="checkbox"/>	Process Flow Diagrams	Separator page	\5_PPAP_4th_Process Flow Diag...	2010.11.13.	1	vcd_1174117_1	Default	2010.11.13.	100%	
7	<input type="checkbox"/>	Process FMEA	Separator page	\6_PPAP_4th_Process FMEA.pdf	2010.11.13.	1	vcd_1174138_1	Default	2010.11.13.	100%	
8	<input type="checkbox"/>	Sample Product	Separator page	\14_PPAP_4th_Sample Product.pdf	2010.11.13.	1	vcd_117446_1	Default	2010.11.10.	100%	
9	<input type="checkbox"/>	Control Plan	Separator page	\7_PPAP_4th_Control Plan.pdf	2010.11.13.	1	vcd_1174153_1	Default	2010.11.13.	100%	
10	<input type="checkbox"/>	Dimensional Results	Separator page	\9_PPAP_4th_Dimensional Results...	2010.11.13.	1	vcd_1174244_1	Default	2010.11.13.	100%	
11	<input type="checkbox"/>	Material Performance Test result	Separator page	\10_PPAP_4th_Material Test Perf...	2010.11.13.	1	vcd_117430_1	Default	2010.11.13.	100%	
12	<input type="checkbox"/>	Initial Process Studies	Separator page	\11_PPAP_4th_Initial Process Stu...	2010.11.13.	1	vcd_1174316_1	Default	2010.11.13.	100%	
13	<input type="checkbox"/>	Qualified Laboratory Document...	Separator page	\12_PPAP_4th_Qualified Laborato...	2010.11.13.	1	vcd_1174335_1	Default	2010.11.13.	100%	
14	<input type="checkbox"/>	Records of Compliance With Cu...	Separator page	\17_PPAP_4th_Records of Custo...	2010.11.13.	1	vcd_1174453_1	Default	2010.11.13.	100%	
15	<input type="checkbox"/>	Appearance Approval Report	Separator page	\13_PPAP_4th_Appearance Appr...	2010.11.13.	1	vcd_1174351_1	Default	2010.11.13.	100%	
16	<input type="checkbox"/>	Master Sample	Separator page	\15_PPAP_4th_Master Sample.pdf	2010.11.13.	1	vcd_1174423_1	Default	2010.11.13.	100%	
17	<input type="checkbox"/>	Checking Aids	Separator page	\16_PPAP_4th_Checking Aids.pdf	2010.11.13.	1	vcd_1174437_1	Default	2010.11.13.	100%	
18	<input type="checkbox"/>	Part Submission Warrant	Separator page	\18_PPAP_4th_Part Submission W...	2010.11.13.	1	vcd_1175253_1	Default	2010.11.13.	100%	

admin ADMIN 0.000.0000-1 1 C:\User\PPAP Magic 2011\packages\0.000.0000-1\_1\_ppap

21. picture

It is possible to add package items in three ways

 New item New Item button (add individual item)	 Load Template Load Template – “ppaptemp” (load a pre-created item list)	 Load Existing Package – “ppap” (load a package of other product)
---	--	--



22. picture

In order to make a file for sending, PPAP package items can be packed into a Zip file using “Make ZIP package” button. Only marked files will be included into the compressed file. This zip files are stored in the product version folder.



**Note:** use of special characters is not allowed in product name, because in that case, the package file cannot be created by operating system.

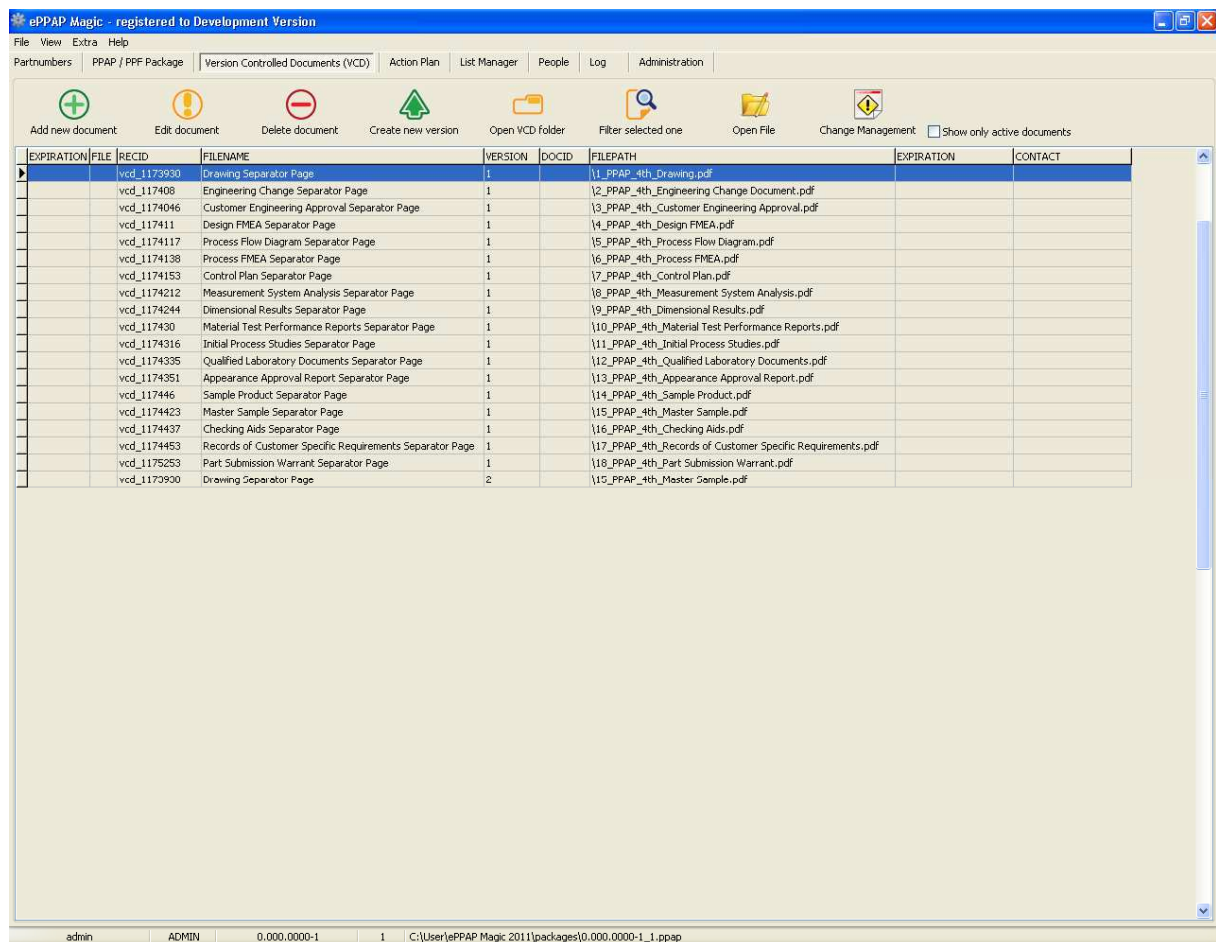
## 7. Version Controlled Documents

Target of this module is to provide documents for package module, which will be updated so the new version replaces the previous one.

All version controlled documents have to be placed into the “vcddocuments” folder. These documents will only be linked into the packages from this place. If new version has been released, the user should add that to this module, make inactive the previous one and start the Change Management function.

Main screen contents

- buttons
  - i. add new document
  - ii. edit document
  - iii. delete document
  - iv. create new version
  - v. open vcd folder
  - vi. filter selected one
  - vii. open file
  - viii. change management



23. picture

24. picture

Target of “Change Management” module is to manage documents which were replaced by a new version. It means that this function is only available in case of inactive documents.

PRODUCT	VCD_ID
0.000.0000-1_1	vcd_1173930_1

25. picture

Document change can only be done if previous, new version and upgrade type are defined. Three type of change are possible.

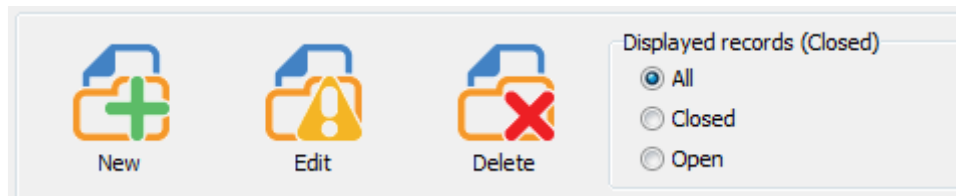
- new version is added to the package(s)
- new version is added to the package(s) and the previous one is deleted
- add a comment to the package(s)

## 8. Action Plan

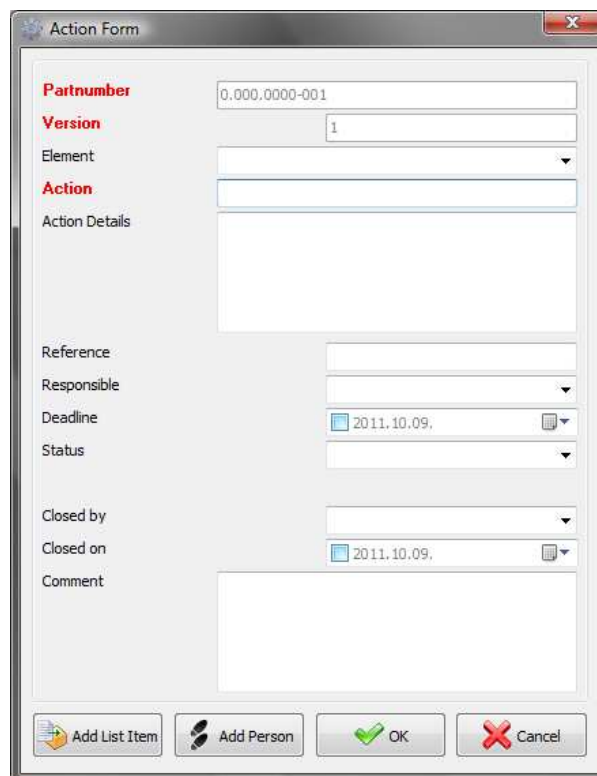
Starting from an existing product record, it is possible to create an action plan item record, if you will need to do and follow an action.

On this page you can add, edit and delete action plan records.

Basically, only records of the actually selected product are displayed, but any time the user is able to apply a filter to see all, closed or open records grouped.



26. picture

A 'Action Form' dialog box with a title bar and a close button. The form contains several fields: 'Partnumber' (text box with '0.000.0000-001'), 'Version' (text box with '1'), 'Element' (dropdown menu), 'Action' (text box), 'Action Details' (large text area), 'Reference' (text box), 'Responsible' (dropdown menu), 'Deadline' (calendar icon and text box with '2011.10.09'), 'Status' (dropdown menu), 'Closed by' (dropdown menu), 'Closed on' (calendar icon and text box with '2011.10.09'), and 'Comment' (large text area). At the bottom are four buttons: 'Add List Item' (with a list icon), 'Add Person' (with a person icon), 'OK' (with a green checkmark), and 'Cancel' (with a red X).

27. picture



## 9. List Manager

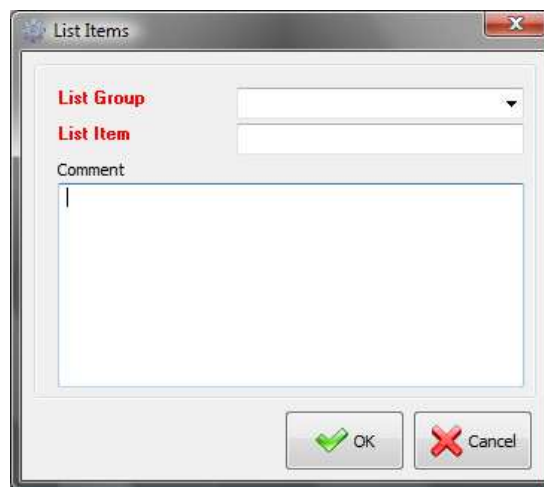
With this module, the user is able to define list items which are used by other modules. List items can be added to groups which are used by other modules.

On this page you can add, edit and delete list item records.

Using the filter function, it is possible to show only the items of the selected list group.



28. picture

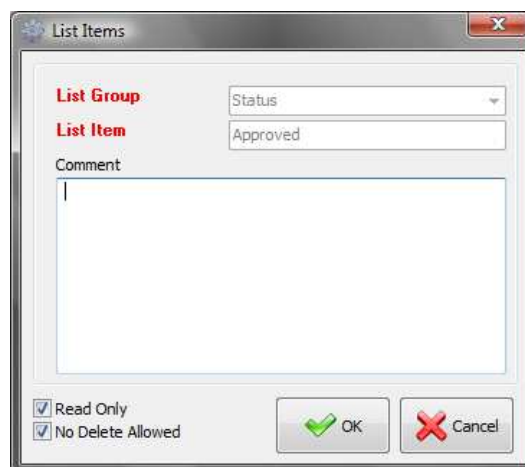


29. picture

Using the right click menu and choosing the “Administration” – “Open in advanced mode”, the user is able to make protected list items.

Protection can be

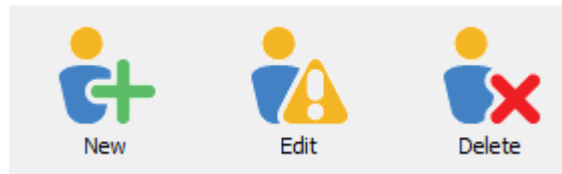
- read only
- no deletion allowed.



30. picture

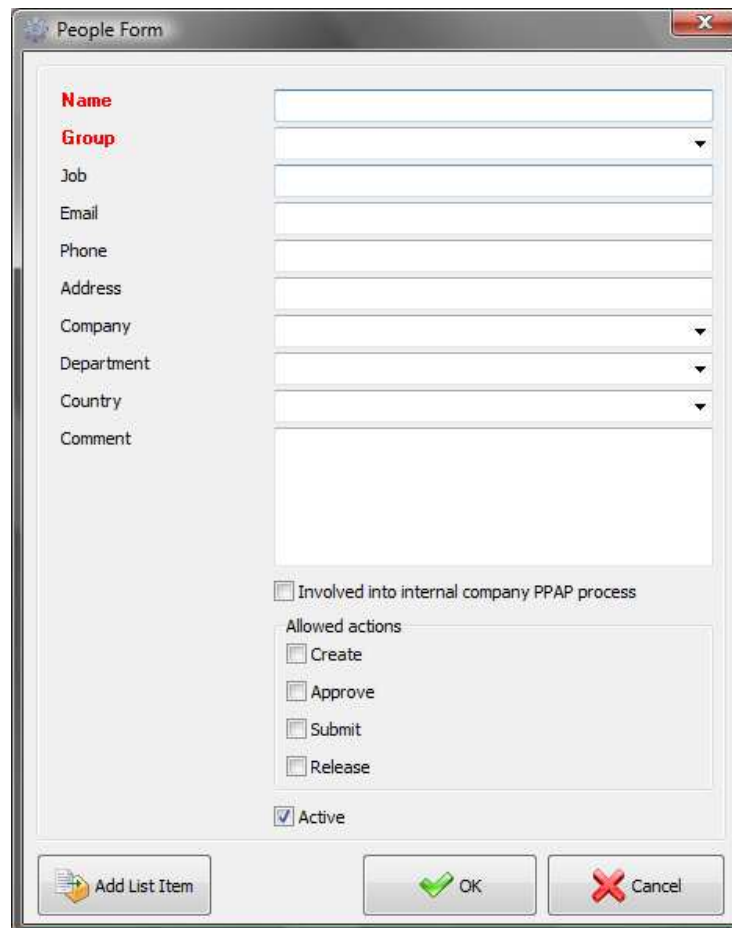
## 10. People

This module can be used to define people for the different PPAP / PPF related operations. On this page you can add, edit and delete people records.



31. picture

People names will be accordingly displayed within other modules, as they are defined here. For example, if a user is not ticked to allow “Approve” operation, then his/her name will not be listed in the field where the approval person has to be selected.



32. picture

Group list can be freely modified within the List Module.

## 11. Log

If log function is enabled within Settings, then the application will record all main activities. These types of actions are

- login
- logout
- run
- modify
- delete
- save

Together with action type, the username, date and time and a short comment are also recorded. Target of this module is to provide a function which will allow the company to see who did and what with the product PPAPs.



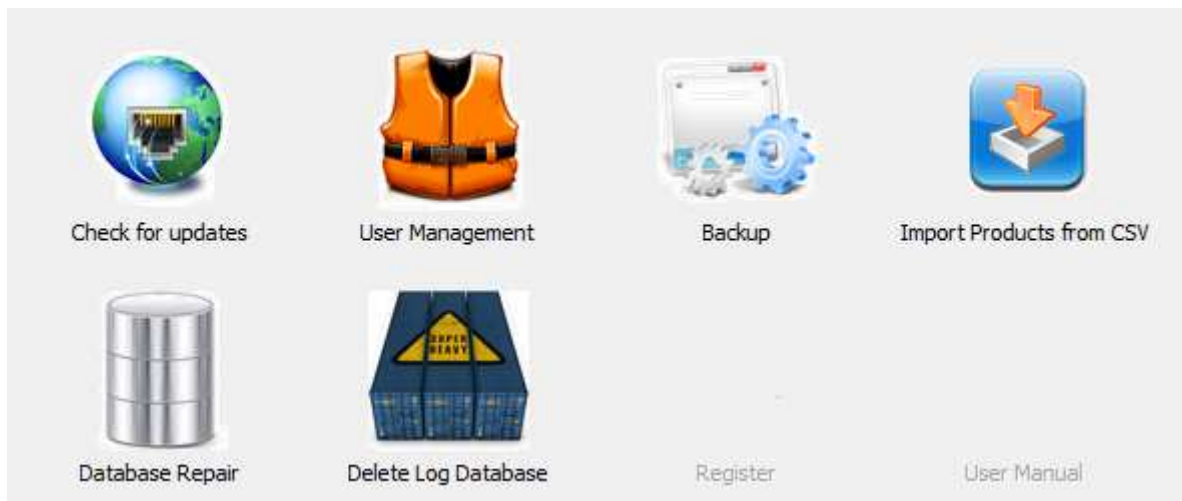
**Note:** these records cannot be edited, only to delete by an admin user on the Administration page.

## 12. Administration

On this page the user can check the database locations, in order to be sure that the application is connected to the right directories.

Additionally, it is possible to do some application management operations like

- update checking
  - i. check online update
  - ii. give a message to the user if new version or patch exists
  - iii. download the required file(s)
  - iv. perform upgrade
- user management
  - i. manage users (username, password, user type and comment)
  - ii. enable / disable application login
- backup
  - i. copy database files into the backup folder
- import product from csv file
  - i. possibility to import existing data from prepared csv file
- repair database
  - i. check and compress database
  - ii. exit application
- delete log file
  - i. delete all log entries
- register application
  - i. perform a computer specific registration process
- open user manual
  - i. if exists, usermanual.pdf file will be opened

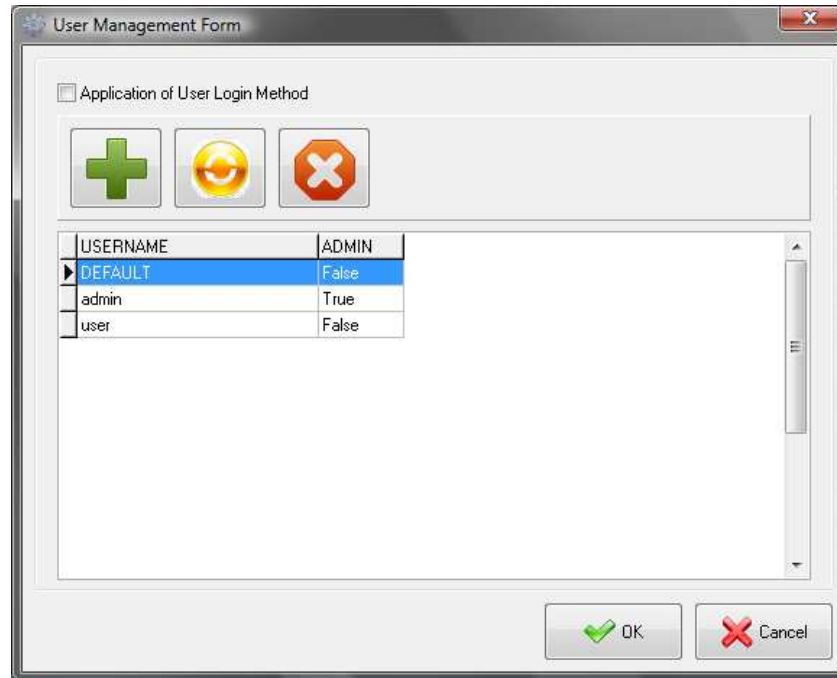


33. picture

## 13. User Management

ePPAP-Magic is able to control the login and software usage by users defined within this module. If “Application of User Login Method” is ticked, then username and password will be requested at application start.

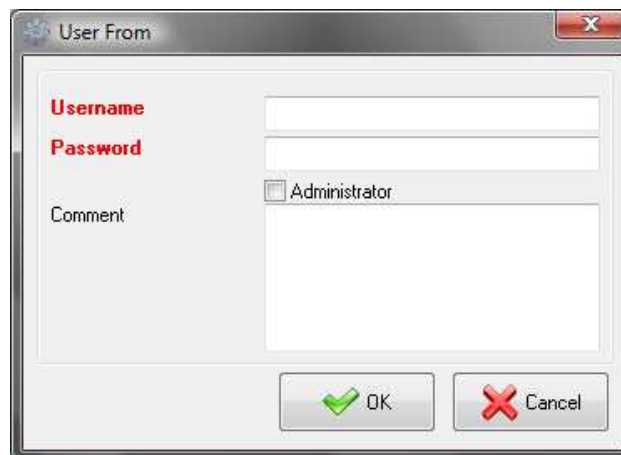
Users can be added, modified and deleted on the main form.



34. picture



**Note:** "DEFAULT" user can not be edited or deleted. It is part of the default installation. DEFAULT user has no password.



35. picture



**Note:** administrator credentials can only be modified by the owner.

## 14. Upgrades

### *Installed application (recommended)*

In case of installed application, the built-in online upgrade module will do all necessary actions to assure that you will always have the latest release.

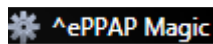


**Note:** it is mandatory to have administrator right to do an application upgrade.



36. picture

ePPAP-Magic indicates with a sign before its name on the header, if administrator account is used.



37. picture

### *Portable application*

You should regularly check the ePPAP-Magic websites for newer version.



**Note:** it is highly recommended to install a setup version at least on one computer per company to be sure that new versions will not be ignored.

## 15. Contacts

### *Email*

[eppapmagic@gmail.com](mailto:eppapmagic@gmail.com)  
[eppapmagic@freemail.hu](mailto:eppapmagic@freemail.hu)

### *Website*

<http://simadcom.atw.hu>  
<http://eppapmagic.atw.hu>

I'm welcome any comments or ideas by email in English or Hungarian language.

Email me, if you like this software.

It's really useful for me to receive your e-mail messages to keep working on modifying and improving this software.

## 16. Copyright

ePPAP-Magic is distributed as **Freeware**, but free registration is expected. I will do my best to provide this free status as long as possible. The purpose of this registration demand is to know the popularity of my software and to get as many feedbacks from the users as possible in order to give me more energy for the further development.

My expectation concerning the copyright as follows:

- All copyrights to ePPAP-Magic are exclusively owned by the Developer.
- ePPAP-Magic may be freely distributed only if it is subject to the following conditions:
  - the distribution package is not modified.
  - no person or company may charge a fee for the distribution of ePPAP-Magic without a written permission from the copyright holder, except to recover the media costs.
  - the ePPAP-Magic may be bundled or distributed together with any other products or packages, but the same conditions apply.

Warranty conditions:

ePPAP-Magic IS DISTRIBUTED "AS IS". NO WARRANTY OF ANY KIND IS EXPRESSED OR IMPLIED. YOU USE IT AT YOUR OWN RISK. THE DEVELOPER WILL NOT BE LIABLE FOR DATA LOSS, DAMAGES, LOSS OF PROFITS OR ANY OTHER KIND OF LOSS DUE TO THE USE OR MISUSE OF THIS SOFTWARE.

Licenses:

- All rights not expressly granted here are reserved to the Developer.
- Installing and using ePPAP-Magic indicates your acceptance of the terms and conditions of the license.
- If you do not agree to the terms of this license you must remove ePPAP-Magic files from your storage devices and cease to use the product.

If you want to register please follow chapter 2. described above.

Support

- I will do my best to provide support but I cannot guarantee that every request will be answered.
- Support languages are English or Hungarian.
- Support is provided only in written.



## 17. Readme.txt

ePPAP-Magic

This is a simple Production Part Approval Process management Software what I have developed for myself but later decided to make it available for public.

Version: 2.0.1.52

Release date: 01.11.2011

Licence: freeware, but a simple email registration is required in order to know the popularity of this software.

So it means that it is theoretically a regware software.

#####

Content of this file

1. SYSTEM REQUIREMENTS
2. INSTALLATION
3. LANGUAGES
4. REGISTRATION
5. CONTRIBUTION

#####

### 1. SYSTEM REQUIREMENTS

1GB FREE SPACE HD

1GB of RAM

1Ghz CPU

1024x768 video resolution as a minimum

8 bits color

Windows 2000 or higher

### 2. INSTALLATION

Follow the instruction of the "eppapmagic.exe" setup file.

If you have no administrator right on the machine on which the software will be installed, you should accept the installation folder recommended by the installer.

Otherwise problem can occur during the use of the software.

IMPORTANT: after adding the FIRST record to the database, it is possible that database must be closed and opened again to see this record.

### 3. LANGUAGES

It can be set on the Settings.

### 4. REGISTRATION

You can request a computer specific registration code by providing your system ID or a company licence which will work on all computers. Please contact with the developer in second case.

### 5. CONTRIBUTION

If you would like to take part in the development, testings, translations or promote my softwares, just an email.

#####

Good luck and I hope you will find my free softwares useful!

ePPAP-Magic Software Development  
Hungary, EU

email: eppapmagic@freemail.hu, eppapmagic@gmail.com  
web: <http://eppapmagic.atw.hu>, <http://simadcom.atw.hu>

#####

## CHANGES

VERSION: 2.0

DATE: 01.11.2011

0102447: New Feature > Change Management of Version Controlled Documents [Complete / Closed]  
016156: Task > Language support [Complete / Closed]  
017452: Enhancement > Splash screen added [Complete / Closed]  
0202758: New Feature > Possibility of partnumber modification after a record was created [Complete / Closed]  
019452: Enhancement > Package items saving sometimes failed [Complete / Closed]  
0201211: Enhancement > All, Inactive and Active status of product table is saved and reload at start [Complete / Closed]  
072813: New Feature > Add PSW column to the product database [Complete / Closed]  
073350: Bug > Setting parameters are not correctly refreshed when re-open [Complete / Closed]  
094717: New Feature > Change user [Rejected / Closed]  
094849: Enhancement > Administrator should not be allowed to modify other administrator's credentials [Complete / Closed]  
095058: Enhancement > Password field deletion on login form if wrong password was given [Complete / Closed]  
095632: Enhancement > Product and version duplication check option at start [Complete / Closed]  
0102256: Bug > Attachment flag icon on product form worked incorrectly [Complete / Closed]  
0102530: New Feature > Changeable company logo [Complete / Closed]  
010508: Bug > Open File button failed if there was no record choosen [Complete / Closed]  
011150: Enhancement > User account levels [Postponed / Closed]  
016269: Enhancement > Hideable top buttons [Complete / Closed]  
016310: Enhancement > Opening of attached file on the product table [Complete / Closed]  
016328: Enhancement > Company name can be displayed on registered version [Complete / Closed]  
0191835: New Feature > Button added to request a registration code [Complete / Closed]  
020111: Enhancement > Mark & UnMark All command for package items [Complete / Closed]  
0201142: Enhancement > Indication of count of files added into the ZIP package [Complete / Closed]  
0201410: Bug > Correct package item creation date does not written into the file [Complete / Closed]  
0201619: Enhancement > Package file change is checked when application is closed [Complete / Closed]  
020336: Enhancement > Notification message if there is no part choosen [Complete / Closed]  
020404: Bug > User Login Method is blocked if there is no new user added [Complete / Closed]  
0171044: Modification > After editing a package item, there is no need to go to the last row [Complete / Closed]  
017111: Enhancement > Package items readiness bar coloured marking added [Complete / Closed]  
0171121: Enhancement > Save button should be active if something has changed [Complete / Closed]  
018180: Change Request > CUSTOMER added to the filter list [Complete / Closed]  
0182132: Change Request > Add MOD column to product database [Complete / Closed]  
019012: New Feature > Setup distribution with built-in auto upgrade function [Complete / Closed]  
0182110: Modification > Inactive records should not be allowed to modify [Complete / Closed]  
0182119: New Feature > Company Licence registration method [Complete / Closed]  
01988: Bug > Double click on an empty database table open a entry form [Complete / Closed]  
019827: Enhancement > Different user levels [Rejected / Closed]  
019915: Bug > Open VCD Folder button does not work [Complete / Closed]  
019936: Enhancement > Logging can be disabled [Complete / Closed]  
019944: Enhancement > New version controlled document menu added to File menu [Complete / Closed]  
019953: Enhancement > Logging of package item activities [Complete / Closed]

019101: Enhancement > Icons added to the menu [Complete / Closed]  
0193214: Bug > Incorrect Log information if vcd file is deleted [Complete / Closed]  
07535: Enhancement > In case of inactive product, package form OK button is enabled [Complete / Closed]  
0782: Modification > Add file dialog of VCD documents does not show filetypes [Complete / Closed]  
0142230: Modification > Package item marking is always set to False when editing (should not be modified [Complete / Closed]  
014281: Bug > File flag indicator does not work, no icon is shown [Complete / Closed]  
06101: Enhancement > Contacts added to the list manager [Complete / Closed]  
0194332: Sub-Task > User Manual [Complete / Closed]  
0193214: Bug > Incorrect Log information if vcd file is deleted [Complete / Closed]  
07535: Enhancement > In case of inactive product, package form OK button is enabled [Complete / Closed]  
0782: Modification > Add file dialog of VCD documents does not show filetypes [Complete / Closed]  
0142230: Modification > Package item marking is always set to False when editing (should not be modified [Complete / Closed]  
014281: Bug > File flag indicator does not work, no icon is shown [Complete / Closed]  
06101: Enhancement > Contacts added to the list manager [Complete / Closed]  
082745: Enhancement > Filter conditions added on product page [Complete / Closed]  
0193735: Bug > Incorrect version displayed in bug report email subject [Complete / Closed]  
0155257: Enhancement > Coloured product records based on their own approval state [Complete / Closed]

VERSION: 1.0.1.35

DATE: 2011.07.20.

0171928: Enhancement > System ID for registration can be copied [Complete / Closed]

0191519: Bug > File / Preferences command does not work [Complete / Closed]