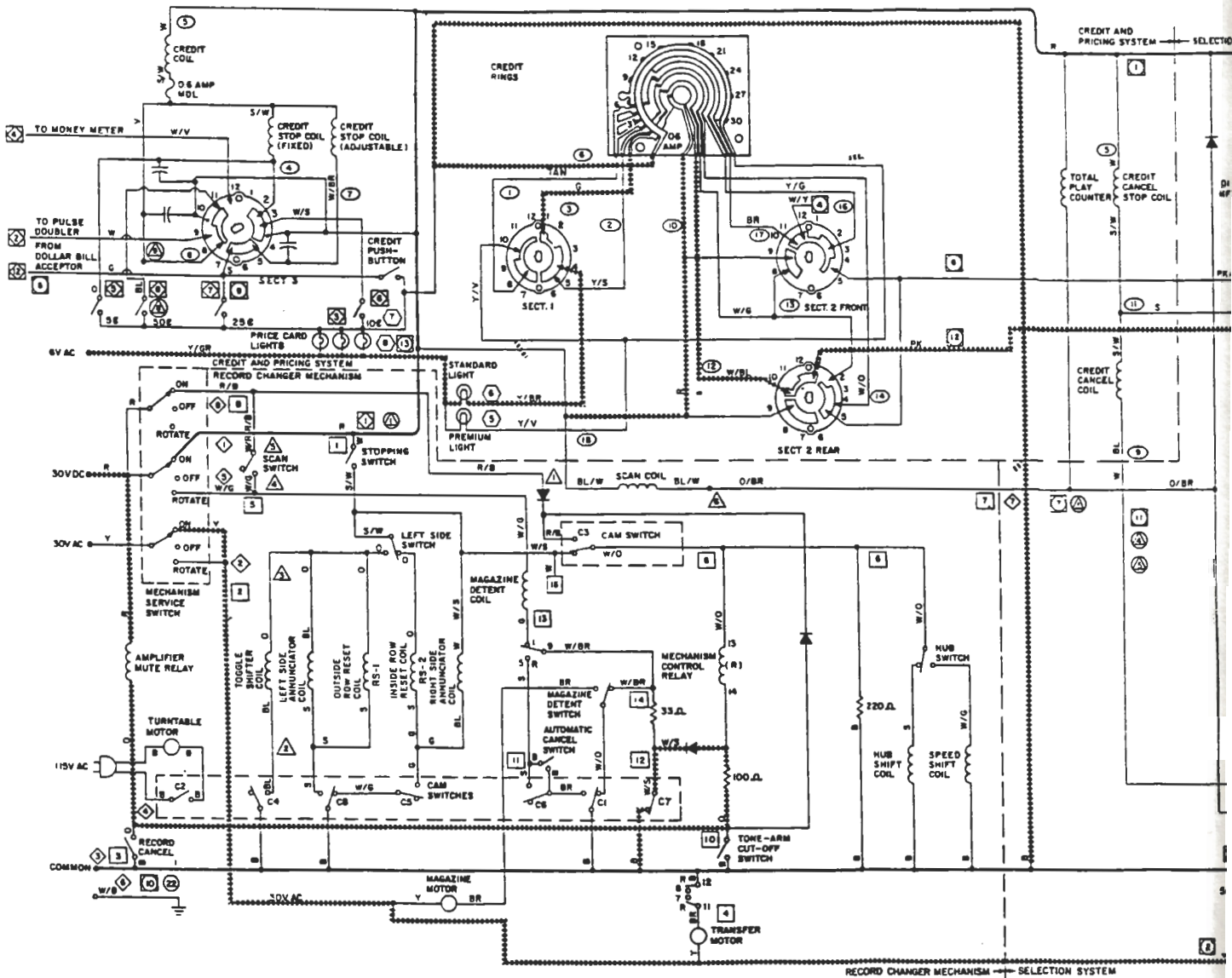


### CUSTOMER MAKES A SELECTION

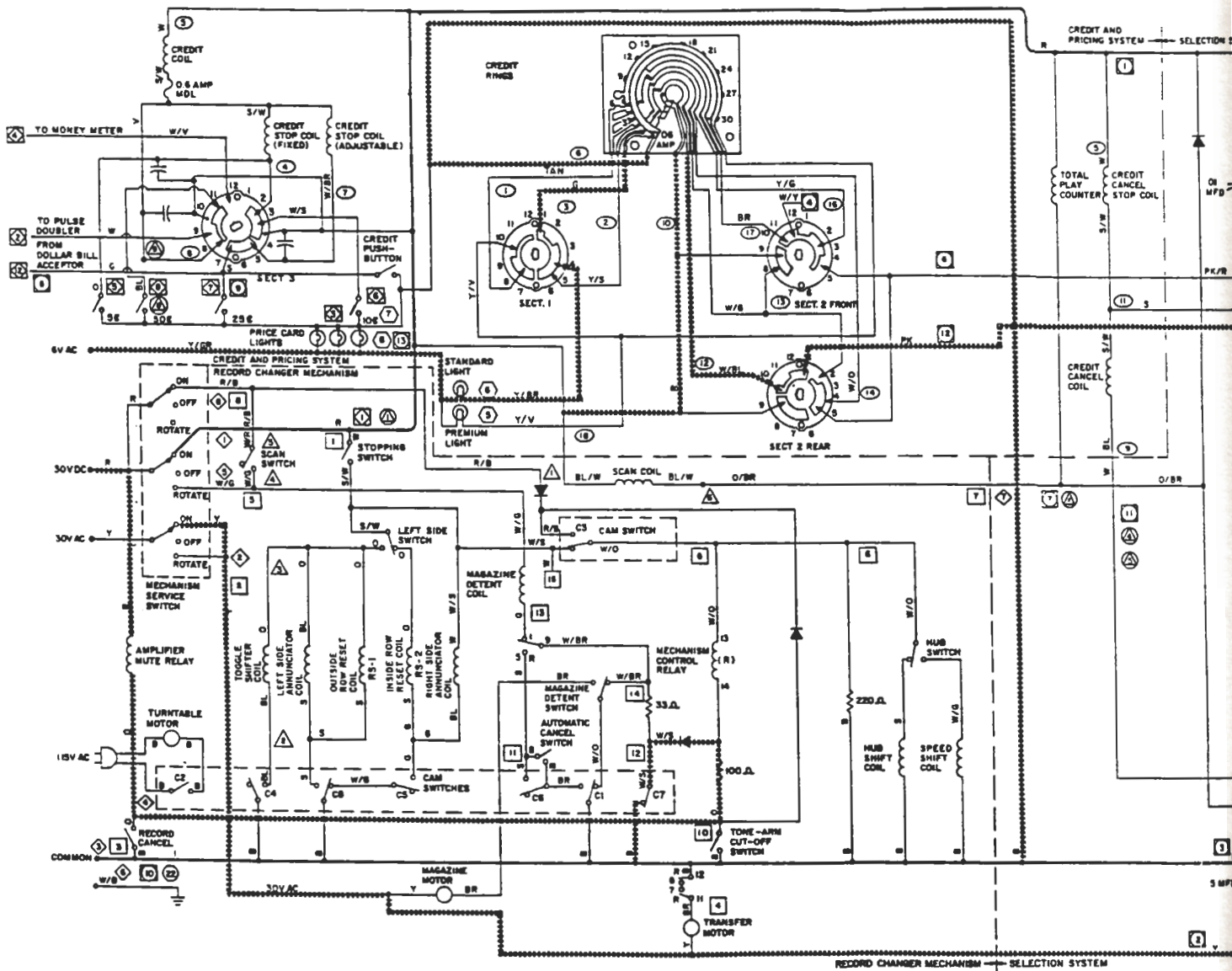
Let us assume the customer pushed buttons "V" and "8". Pushbutton switch "V" makes a connection to segment "UV" on the search unit commutator (inside circuit) and pushbutton switch "8" makes a connection to segment "8." In addition, the "V" pushbutton opens the circuit to outside row select coil and closes the circuit to inside row select coil. Pushbuttons "8" and "V" close the circuit to operate start relay (RS).



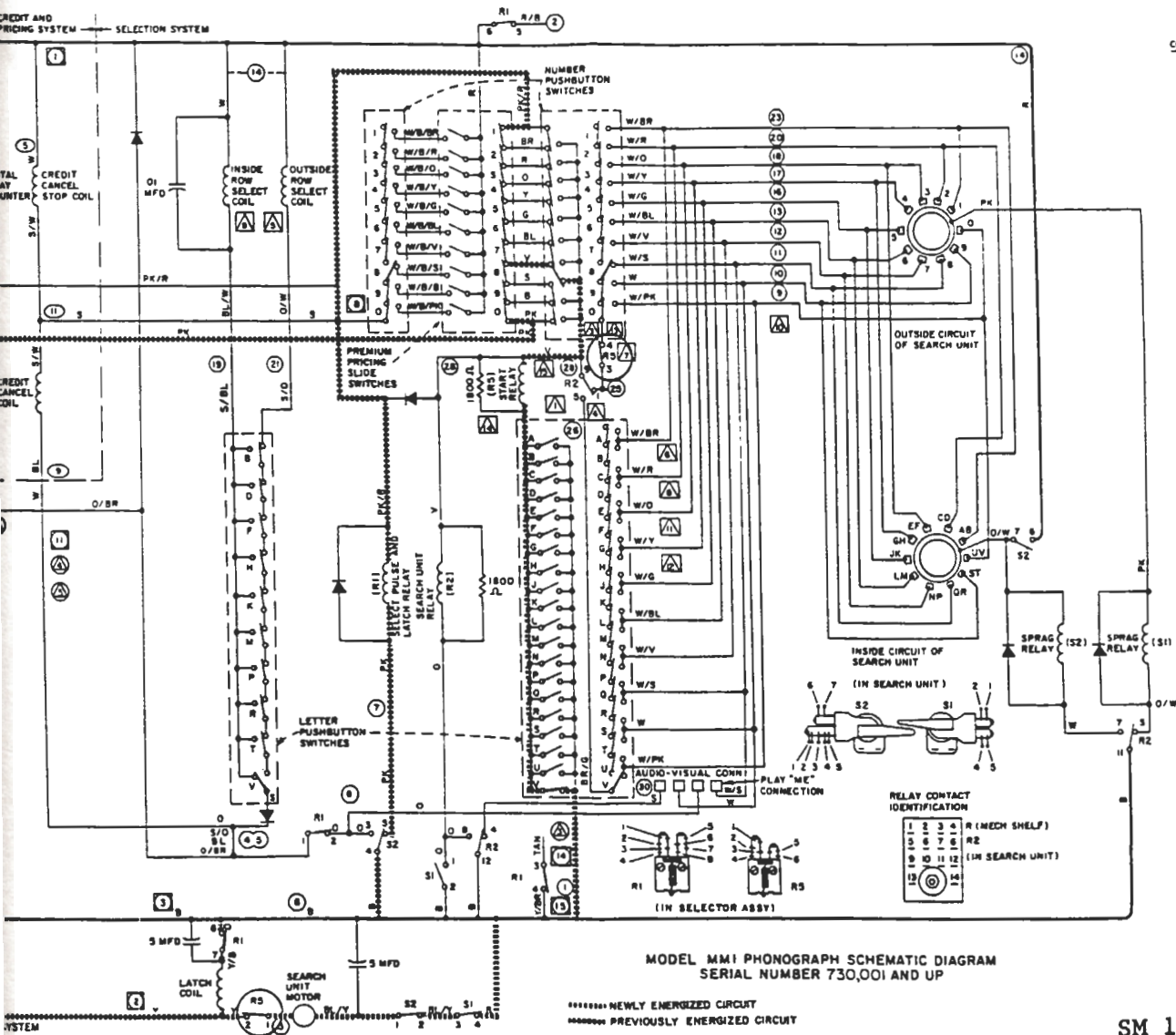


**SEARCH UNIT MOTOR STARTS**

When R5 pulls in, contacts 1 and 2 turn on the search unit motor which drives the search wipers and select coils. Contacts 3 and 4 connect the common side of the number pushbutton switches to the "hot" side of the selection circuit.



CREDIT AND PRICING SYSTEM — SELECTION SYSTEM

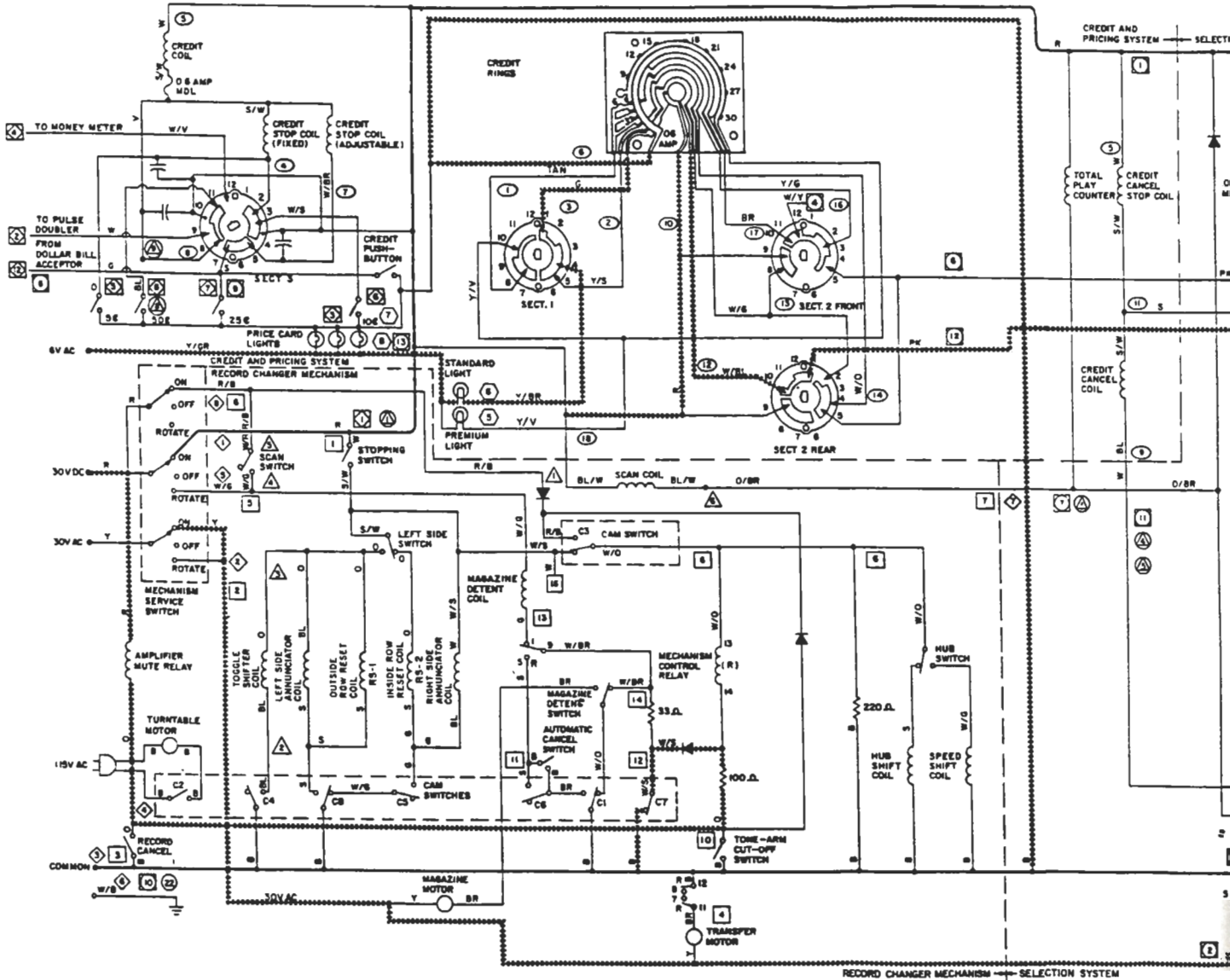


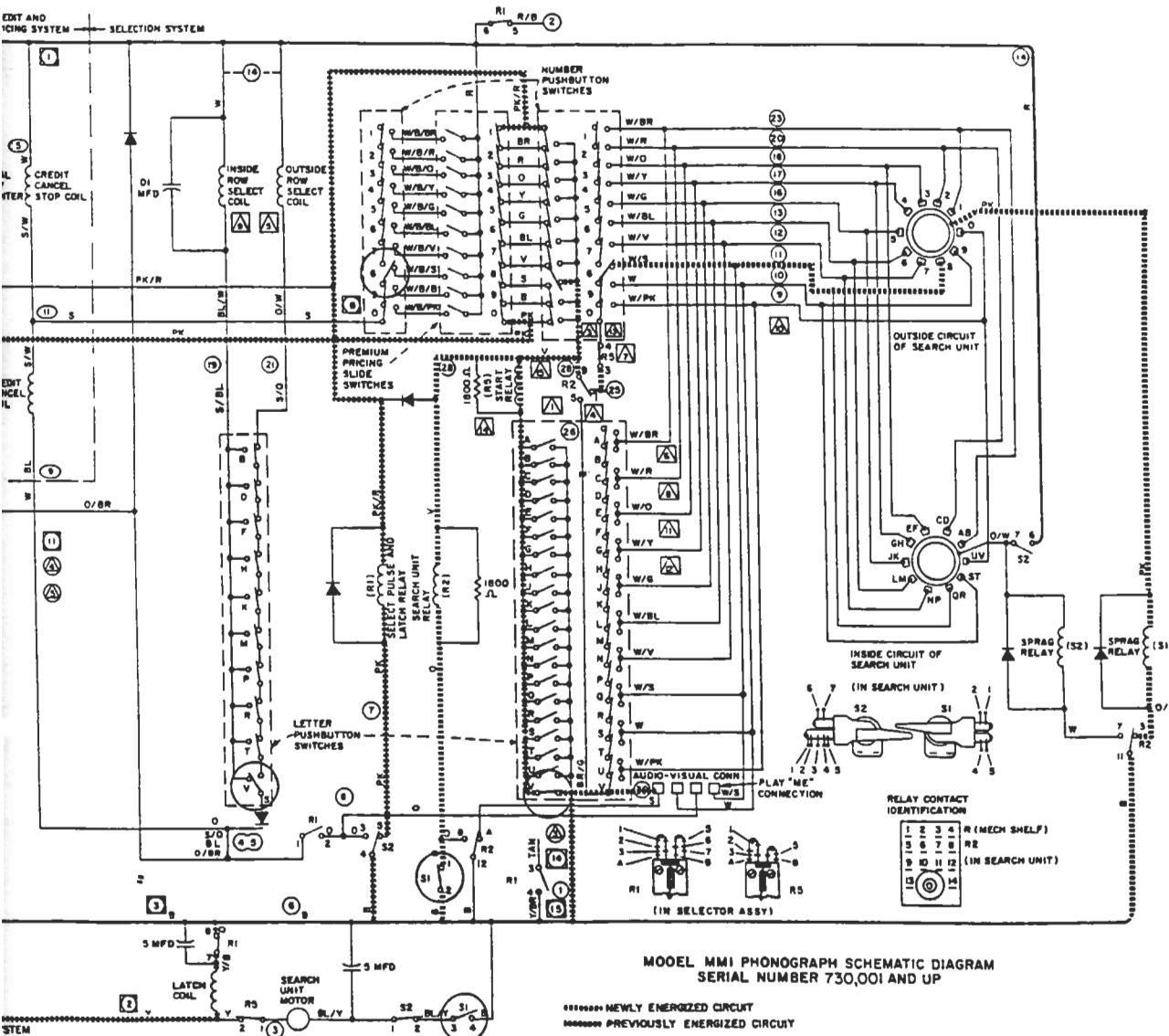
MODEL MM-1 PHONOGRAPH SCHEMATIC DIAGRAM  
SERIAL NUMBER 730,001 AND UP

..... NEWLY ENERGIZED CIRCUIT  
..... PREVIOUSLY ENERGIZED CIRCUIT

**SEARCH WIPERS LOCATE THE NUMBER**

When the number search wiper (outside circuit) runs onto segment "8," a circuit is completed to sprag relay S1. The sprag routh on S1 stops the rotation of the search wipers and select coils. One set of contacts (3 and 4) on S1 open and shut off the search unit motor. The other contacts (1 and 2) on S1 close and turn on search unit relay (R2).





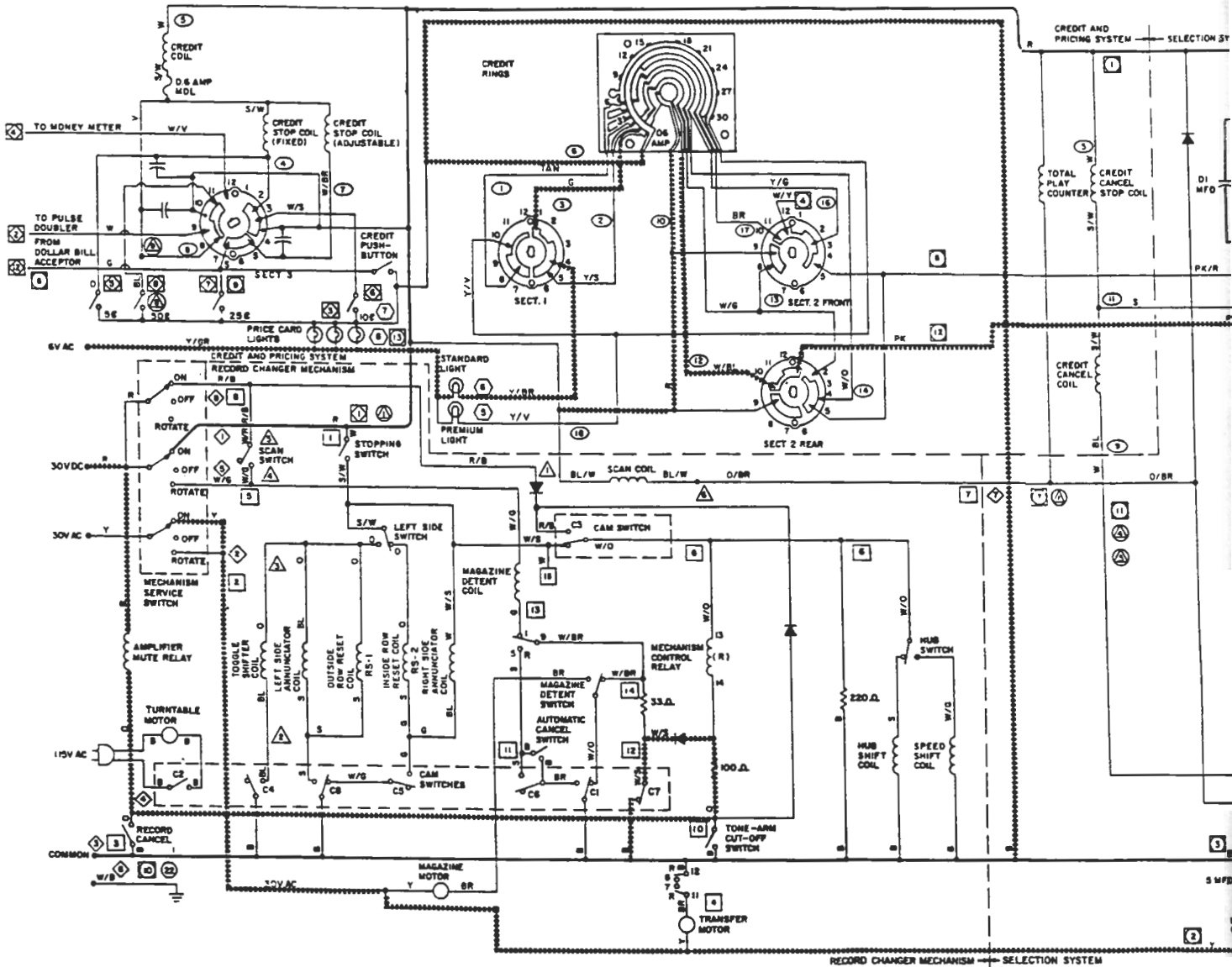
- CONNECTOR IDENTIFICATION**
- ⊠ 30 E BONUS PLUG
  - ⊠ MAIN SEL TO AUX SELECTOR
  - ⊠ MECH HARNESS TO RELAY SHELF
  - ⊠ MAIN PHONO HARNESS TO RELAY SHELF
  - ⊠ SCAM MAGNET ASSY TO MECH ASSY
  - ⊠ SEARCH UNIT EDGE CONNECTOR
  - ⊠ MAIN HARNESS TO SELECTOR ASSY
  - ⊠ CREDIT UNIT EDGE CONNECTOR
  - ⊠ COIN SWITCHES TO MAIN HARNESS
  - ⊠ MAIN HARNESS TO TOP DOOR
- WIRE COLOR CODE**
- B - BLACK
  - BL - BLUE
  - BR - BROWN
  - G - GREEN
  - O - ORANGE
  - PK - PINK
  - R - RED
  - S - SLATE
  - V - VIOLET
  - W - WHITE
  - Y - YELLOW

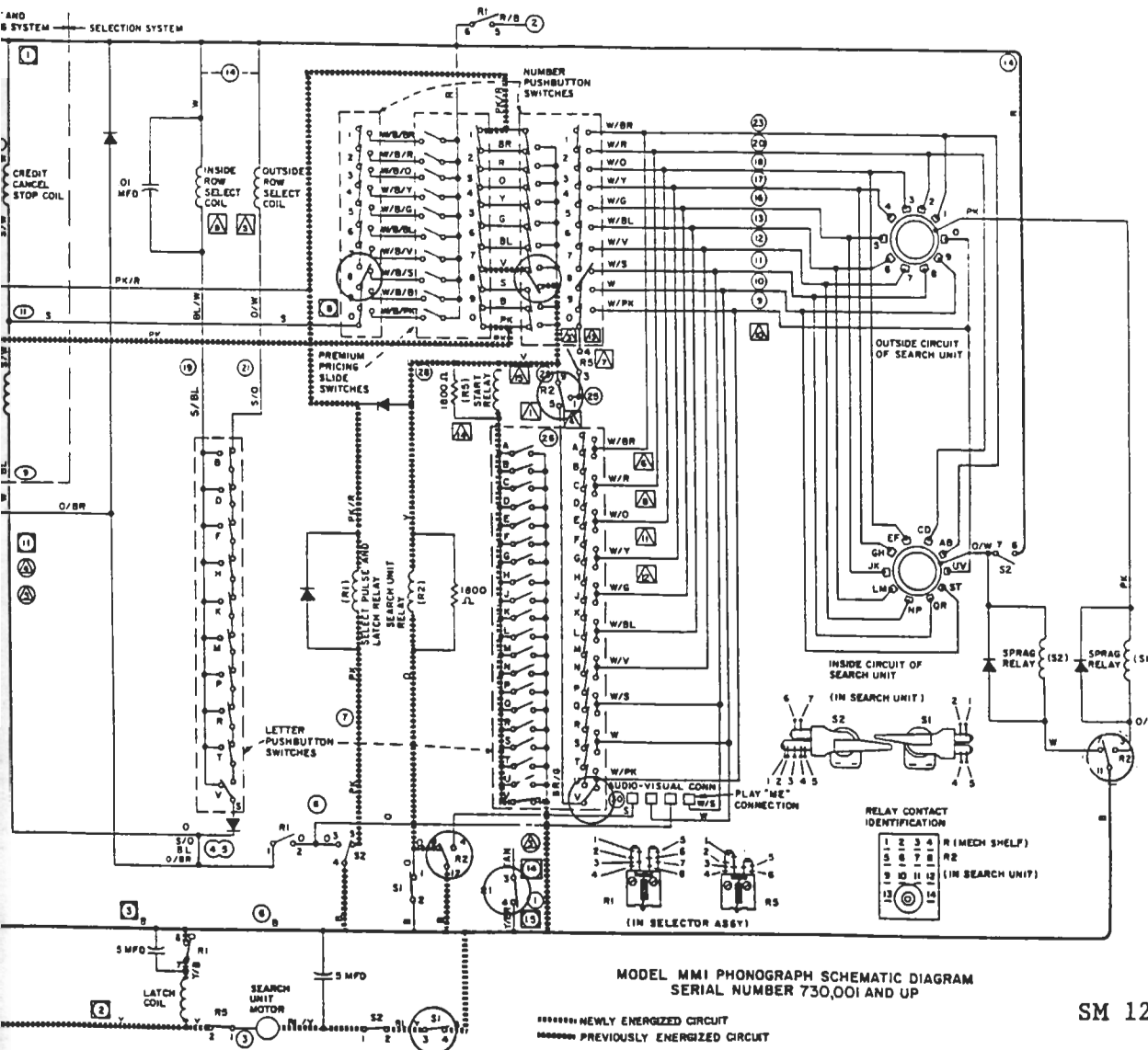
MODEL MM1 PHONOGRAPH SCHEMATIC DIAGRAM  
SERIAL NUMBER 730,001 AND UP

==== NEWLY ENERGIZED CIRCUIT  
----- PREVIOUSLY ENERGIZED CIRCUIT

**SEARCH RESUMES**

When R2 pulls in, one set of contacts (11, 3 and 7) transfers the "common" side of the circuit from S1 to S2. S1 returns to its normal condition, and S1 contacts 3 and 4 close, starting the search unit motor. A second set of R2 contacts (12, 4 and 8) transfers, establishing a holding circuit for R2 itself. A third set of R2 contacts (9, 1 and 5) transfers the "hot" side of the selection circuit from the number pushbutton switches to the letter pushbuttons.

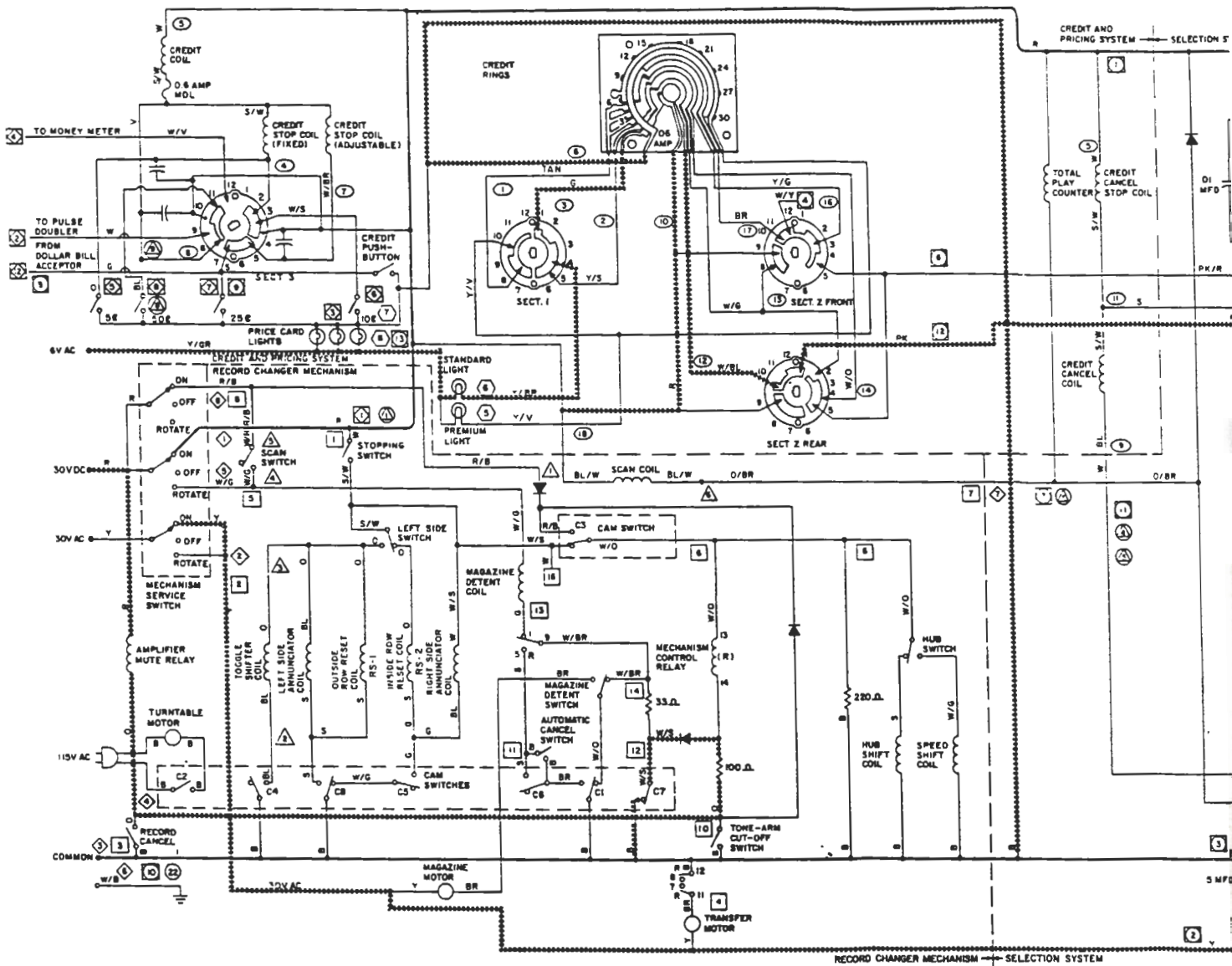


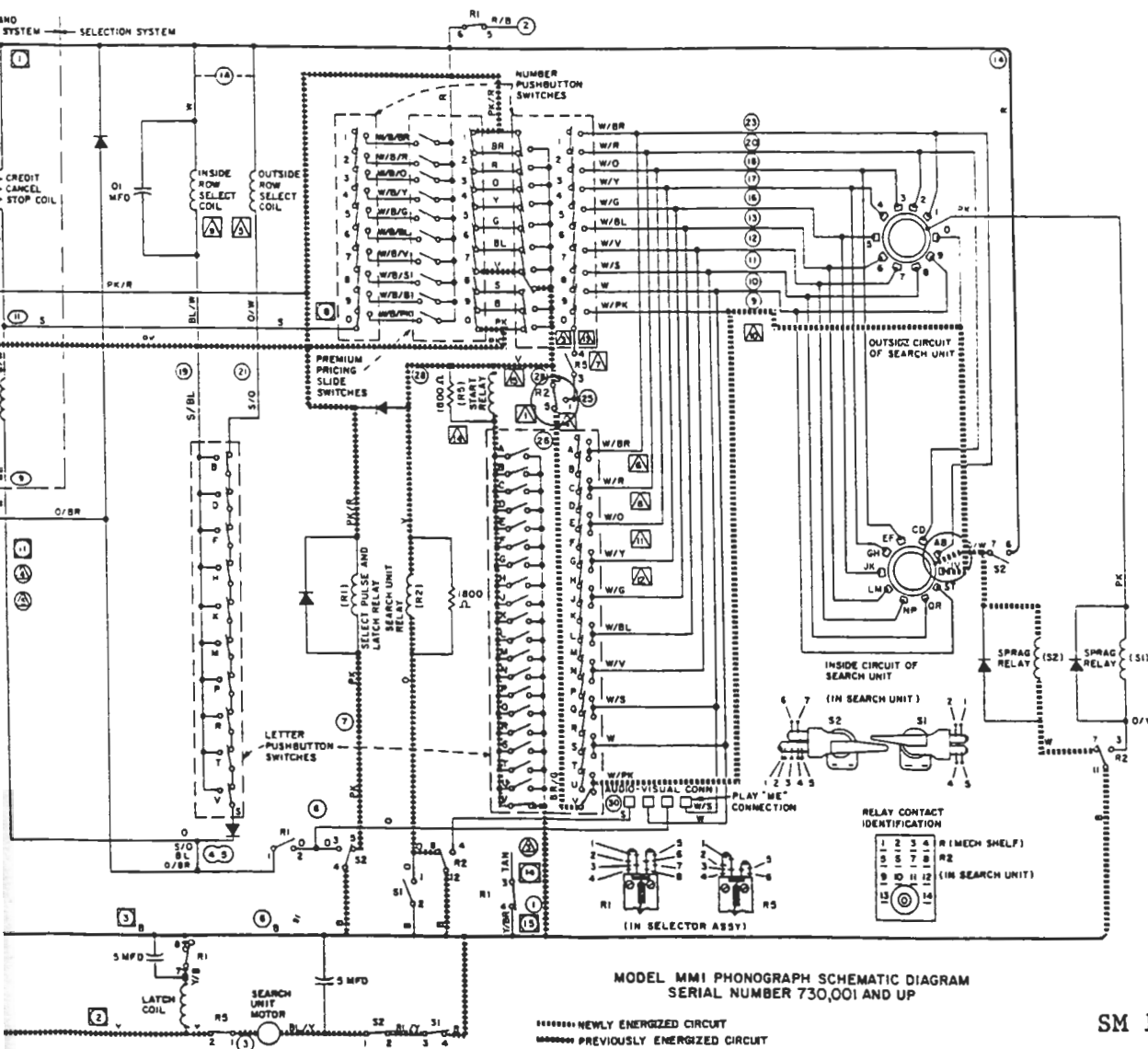




### SEARCH WIPERS LOCATE THE LETTER

At the instant the letter wiper runs onto the "UV" segment, the sprag relay S2 is energized.





- CONNECTOR IDENTIFICATION**
- ⊖ 30 E BONUS PLUG
  - ⊖ MAIN SEL TO AUX SELECTOR
  - ⊖ MECH HARNESS TO RELAY SHELF
  - ⊖ MAIN PHONO HARNESS TO RELAY SHELF
  - ⊖ SCAM MAGNET ASSY TO MECH ASSY
  - ⊖ SEARCH UNIT EDGE CONNECTOR
  - ⊖ MAIN HARNESS TO SELECTOR ASSY
  - ⊖ CREDIT UNIT EDGE CONNECTOR
  - ⊖ COIN SWITCHES TO MAIN HARNESS
  - ⊖ MAIN HARNESS TO TOP DOOR

- WIRE COLOR CODE**
- B - BLACK
  - BL - BLUE
  - BR - BROWN
  - G - GREEN
  - O - ORANGE
  - PK - PINK
  - R - RED
  - S - SLATE
  - V - VIOLET
  - W - WHITE
  - T - YELLOW

**RELAY CONTACT IDENTIFICATION**

1	2	3	4
5	6	7	8
9	10	11	12
13	14	15	16

(R (MECH SHELF)  
R2 (IN SEARCH UNIT)

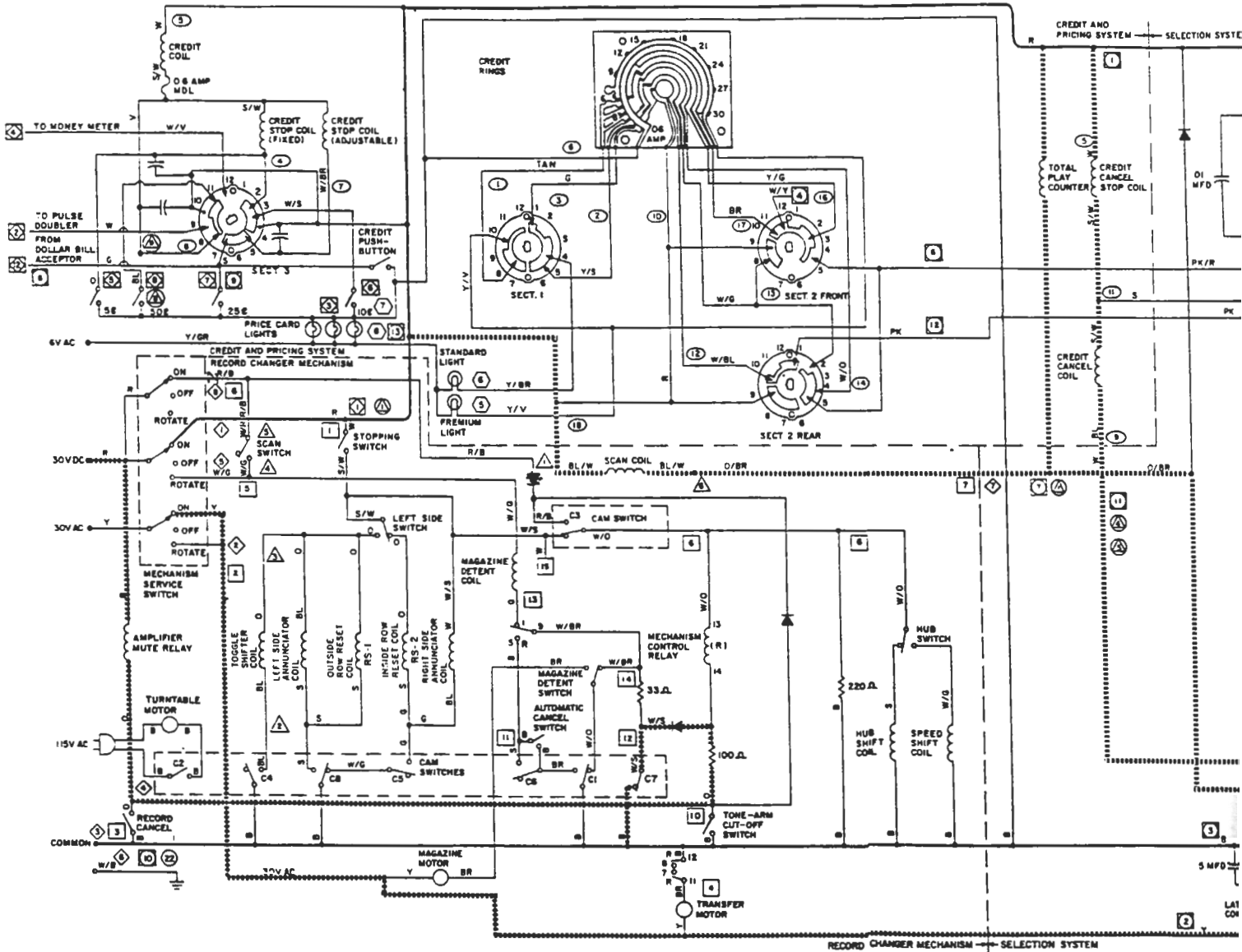
MODEL MM1 PHONOGRAPH SCHEMATIC DIAGRAM  
SERIAL NUMBER 730,001 AND UP

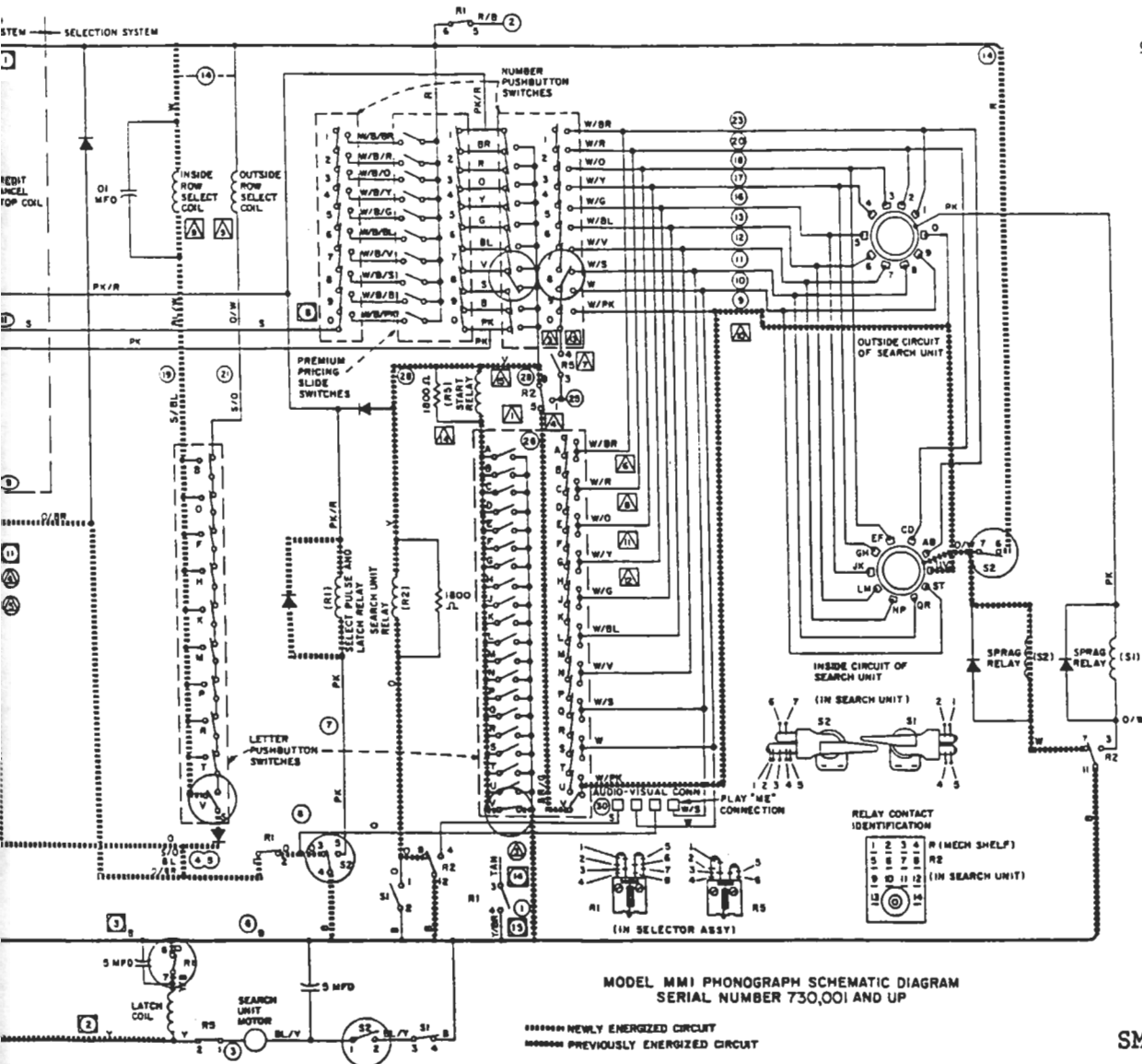
..... NEWLY ENERGIZED CIRCUIT  
- - - - - PREVIOUSLY ENERGIZED CIRCUIT

**SELECTION IS REGISTERED, CREDIT IS REMOVED AND RECORD CHANGER SCAN CONTROL IS OPERATED**

Sprag relay S2 pulls in and locks the search wipers and select coils in place with the select coils aligned with the pins representing selections "U-8" and "V-8." One set of S2 contacts (1 and 2) open and shut off the search unit motor. A second set of S2 contacts (6 and 7) close and set up a holding circuit for S2 itself. A third set of S2 contacts (3, 4 and 5) transfer, shutting off relay R1 and energizing the scan coil in the record changer, the credit cancel coil, and credit cancel stop coil in the credit unit, the inside row select coil, and the total play counter. The inside row select

coil pushes pin "V-8" into the "selected" position. The credit arm back one step into the zero credit position. R1, however, is held closed through a time delay circuit. This governs the length of the "select" pulse to the select coil. During this time R2 and R5 are held closed through





**CONNECTOR IDENTIFICATION**

- ⊕ 50¢ BONUS PLUS
- ⊕ MAIN SEL TO AUX SELECTOR
- ① MECH HARNESS TO RELAY SHELF
- ① MAIN PHONO HARNESS TO RELAY SHELF
- ⊕ SCAN MAGNET ASSY TO MECH ASSY
- ① SEARCH UNIT EDGE CONNECTOR
- ① MAIN HARNESS TO SELECTOR ASSY
- ① CREDIT UNIT EDGE CONNECTOR
- ⊕ COIN SWITCHES TO MAIN HARNESS
- ① MAIN HARNESS TO TOP DOOR

**WIRE COLOR CODE**

- B - BLACK
- BL - BLUE
- BR - BROWN
- G - GREEN
- O - ORANGE
- PK - PINK
- R - RED
- S - SLATE
- V - VIOLET
- W - WHITE
- Y - YELLOW

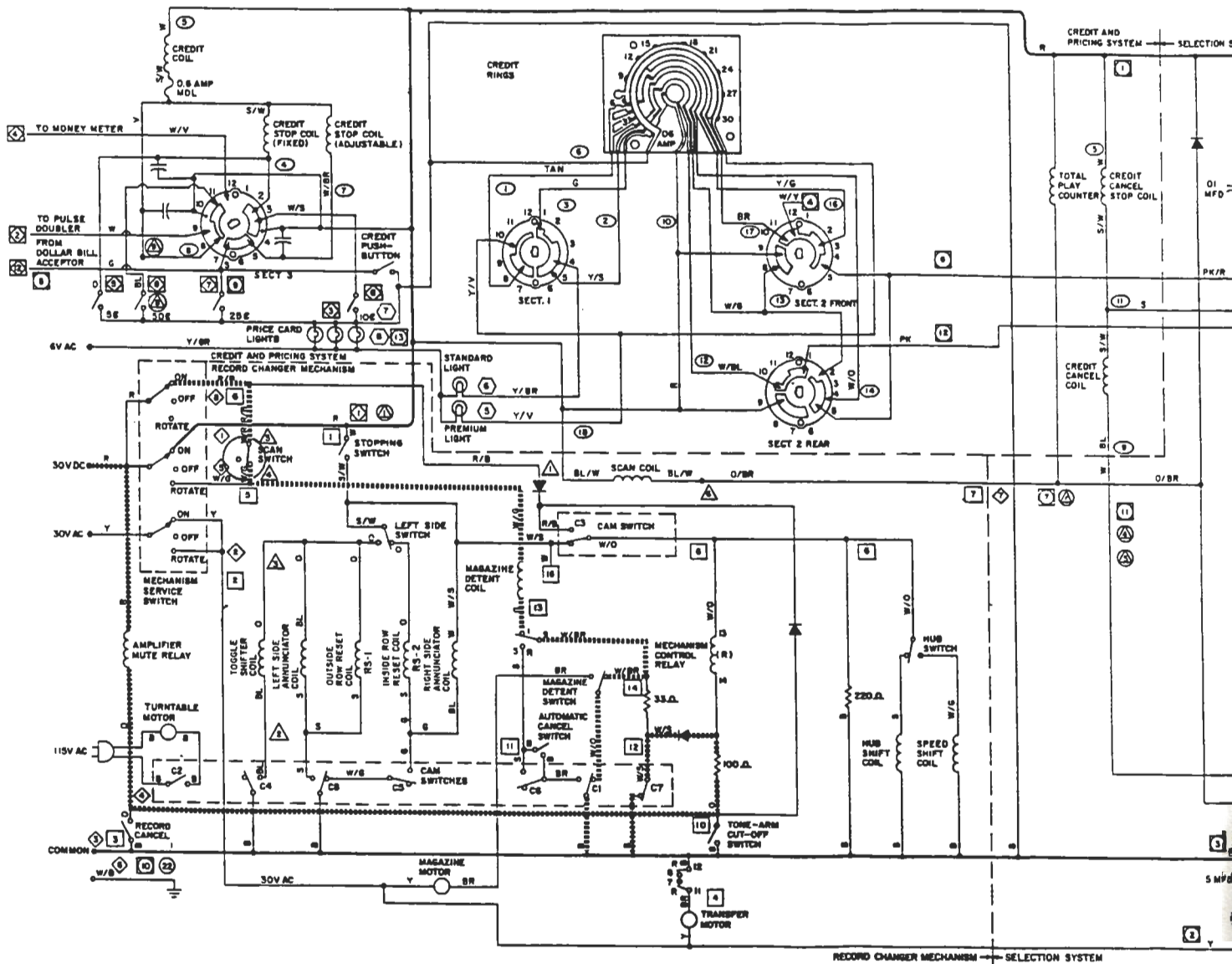
**RELAY CONTACT IDENTIFICATION**

1	2	3	4	R (MECH SHELF)
5	6	7	8	R2
9	10	11	12	(IN SEARCH UNIT)
13	14	15	16	

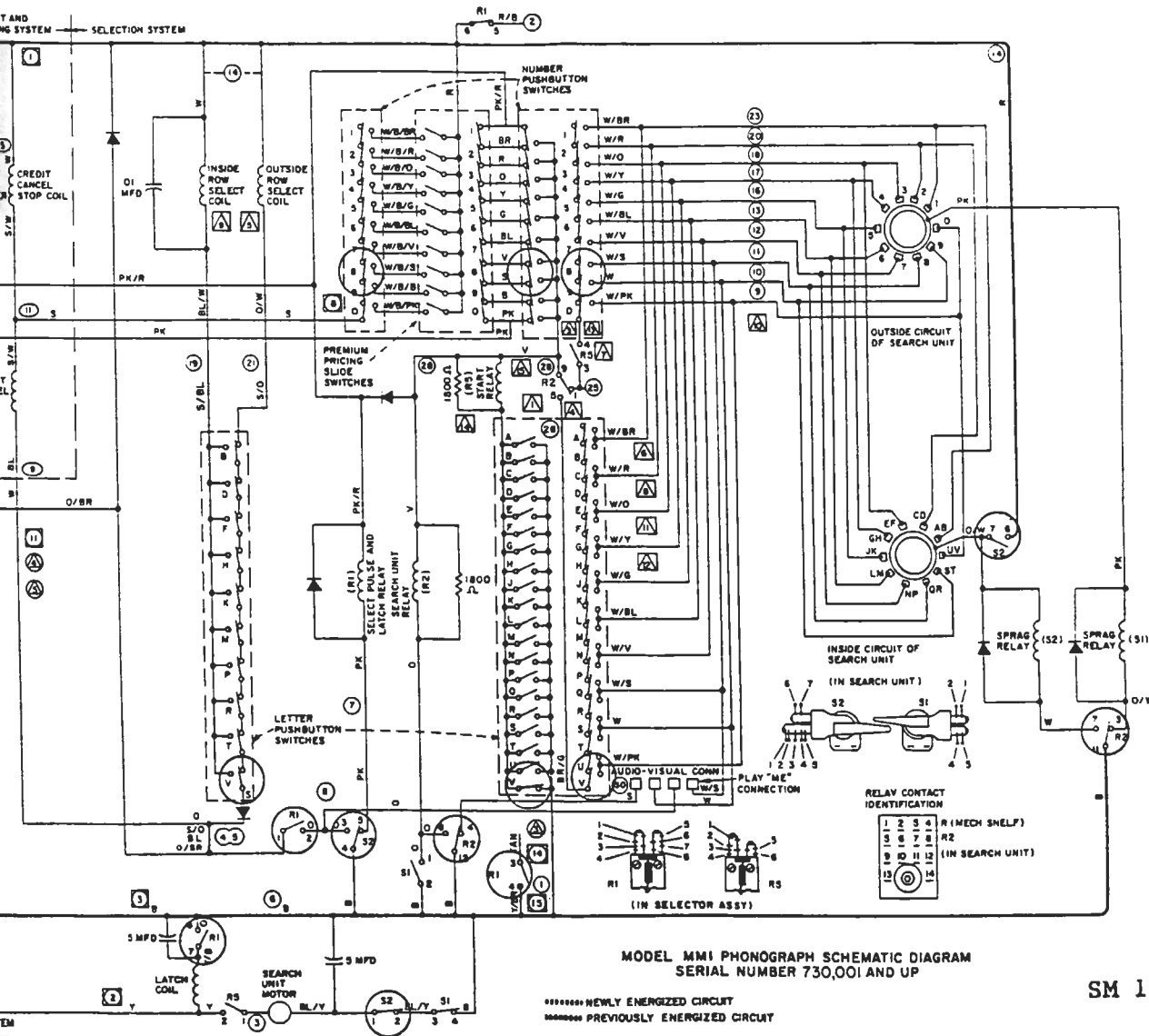
**PUSHBUTTONS UNLATCH AND RECORD CHANGER STARTS**

When the time delay on R1 runs out, the R1 contacts open. This ends the select pulse and shuts off the latch coil. The plunger of the latch coil releases the pushbuttons whose switches all return to their normal position. The open pushbutton switches break the circuit to R2, R5 and S2. These relays return to their normal condition and the selection cycle is ended.

In the record changer mechanism, the scan coil trips the scan coil switch turns on the magazine detent coil through contacts 1 and 9 of



coil trips the scan control allowing the scan switch to close. The scan switch through contacts 1 and 9 of the mechanism control relay (R).



- CONNECTOR IDENTIFICATION**
- ⚠ SO E BONUS PLUS
  - ⚠ MAIN SEL TO AUX SELECTOR
  - ⚠ MECH HARNESS TO RELAY SHELF
  - ⚠ MAIN PHONO HARNESS TO RELAY SHELF
  - ⚠ SCAN MAGNET ASSY TO MECH ASSY
  - ⚠ SEARCH UNIT EDGE CONNECTOR
  - ⚠ MAIN HARNESS TO SELECTOR ASSY
  - ⚠ CREDIT UNIT EDGE CONNECTOR
  - ⚠ COIN SWITCHES TO MAIN HARNESS
  - ⚠ MAIN HARNESS TO TOP DOOR
- WIRE COLOR CODE**
- B - BLACK
  - BL - BLUE
  - BR - BROWN
  - G - GREEN
  - O - ORANGE
  - PK - PINK
  - R - RED
  - S - SLAYE
  - V - VIOLET
  - W - WHITE
  - Y - YELLOW

MODEL MM-1 PHONOGRAPH SCHEMATIC DIAGRAM  
SERIAL NUMBER 730,001 AND UP

SM 131

\*\*\*\*\* NEWLY ENERGIZED CIRCUIT  
\*\*\*\*\* PREVIOUSLY ENERGIZED CIRCUIT