

User Manual

MPC-0812 Series

Thin Client Computer

Preliminary Revision 1.0

July 1, 2010

Zerotech Technology Inc.



1. Features

- Fan/Fan-less Design and 0.29-Liter Compact Sized
- VIA Eden/Nano Processor
- VX800U Chipset
- Support DDR2 533 SODIMM up to 2GB
- 9 COM + 6 USB + Touch controller (option)
- 8G SSD + Micro SD + e-SATA
- VGA + LAN + WIFI (option)

2. Checklist

- 1x MPC-0812
- 1x Power Adapter
- 1x Power Cord
- 1x Driver CD

Optional VESA Mounting Kit

Optional DIN-Rail Mounting Kit

3. Product Specifications

MPC-0812	
Construction	Aluminum extrusion
System Board	Proprietary MB, VIA Eden/NanoProcessor + VX800U
Memory	DDR2 533 SO-DIMM up to 2GB
I/O Panel	Front I/O panel
	1x Phone Jack for Line-Out
	1x Phone Jack for MIC-In
	1x Push button for power on/off
	1x POWER LED
	1x HDD LED
	2x USB2.0
	Rear I/O panel
	1x DC JACK for DC12V input
	1x DB 15F VGA connector for CRT & LCD
	2x USB2.0
	1x RJ-45, LAN port (GbE option)
	1x Micro SD slot
	Side I/O panel
	2x Fan cover (optional, 2 Fans in both side)
	1x Expansion I/O slot (optional, with extension I/O cable)
	1x WIFI antenna (optional, with WIFI module built in)
Others	Reserve "ON/OFF", "Reset" connector inside can wire out to external switch through Expansion I/O slot
Storage	1x Internal SSD 8G Maximum(need preinstall before shipment)
Power Supply	Input: 100-240 VAC, 50-60 Hz, Output: 36W, 12VDC , 3A
Cooling	Fan less by Aluminum extrusion / Fan assistant cooling (option)
Temperature/ Humidity	Operating: 0°C to 35°C, 0%-90%, non-condensing Storage: -20°C to 80°C, 0%-90%, non-condensing
Dimensions	127 x 43.3 x 86.5 mm (WxHxD)
Weight	To be defined
Mounting	Desktop, VESA-mount, DIN-Rail mount
Certification	CE, FCC Class A

Product Specifications (continued)

Power Consumption

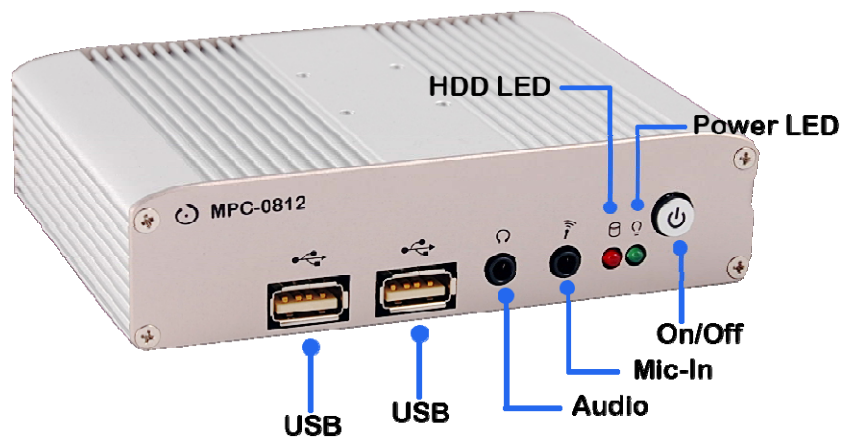
Item	System Power Consumption
Eden 500MHz + VX800U	7.5 W
Eden 1GHz + VX800U	10 W
Nano 1GHz + VX800U	16W (Not Recommend)
Nano 1.3GHz + VX800U	18W (Not Recommend)

Note: MPC-0812 series can support Eden 500M/1G, Nano 1G/1.3G processor.
However for thermal consideration, CPU grade with FAN combination should be confirmed by Zerotech technology.

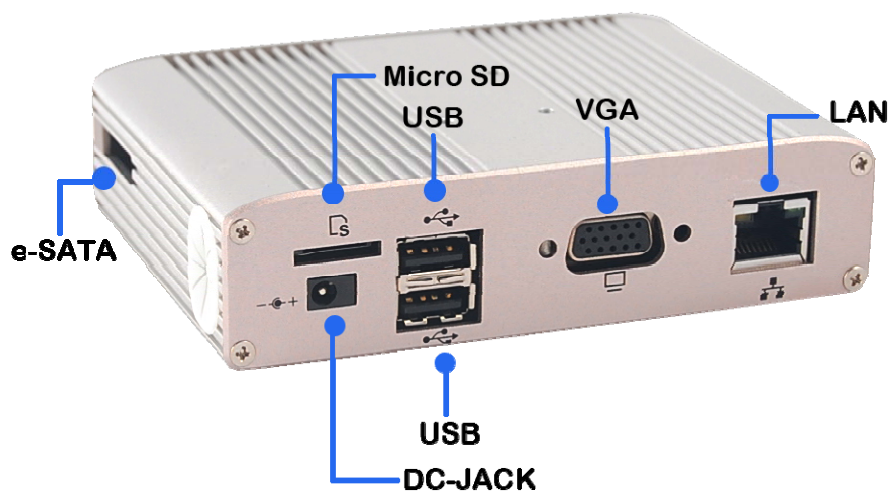
4. System outlook

Refer to the diagrams below to identify the components of the system.

Front Panel – MPC-0812 Basic model (Type 1/2)



Rear Panel –MPC-0812 Basic model (Type 1/2)



Note: Expansion I/O slot and cover will omit if not option this feature.

Front Panel – MPC-0812 Extension model (Type 1/2)



Rear Panel –MPC-0812 Extension model (Type 1/2)



- Note: (1) Reserve "ON/OFF", "Reset" connector inside can wire out to external switch through Expansion I/O slot
(2) Extension RS-232 number are labeled on the cable connector.

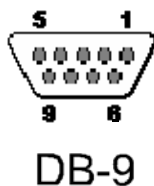
5. Extension COM port definition

I/O TYPE	COM Port number
TYPE 1	COM2, COM3, COM4, COM5, COM6, COM7, COM8, COM9, COM10
TYPE 2	COM3, COM7, COM8, COM9

Note: COM1 occupied by touch controller (option)

COM3/COM7/COM8/COM9

Those DB-9 male connectors support RS-232 12V Level

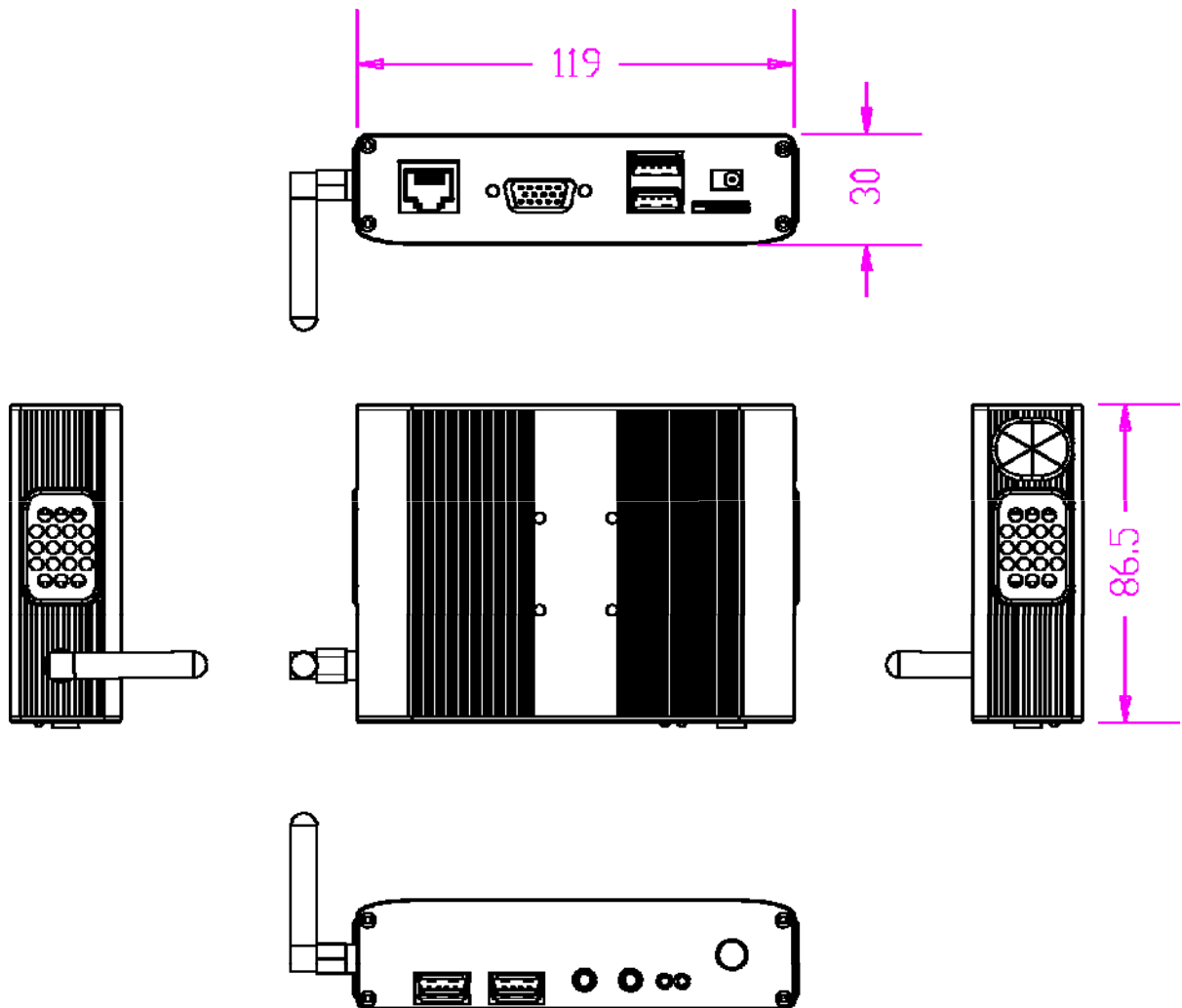


Pin	Signal
1	DCD, Data carrier detect
2	RXD, Receive data
3	TXD, Transmit data
4	DTR, Data terminal ready
5	GND, ground
6	DSR, Data set ready
7	RTS, Request to send
8	RTS, Request to send
9	RTS, Request to send

COM2/COM4/COM5/COM10

Pin	Signal
1	NC
2	RXD, Receive data
3	TXD, Transmit data
4	DTR, Data terminal ready
5	GND, ground
6	DSR, Data set ready
7	RTS, Request to send
8	RTS, Request to send
9	NC

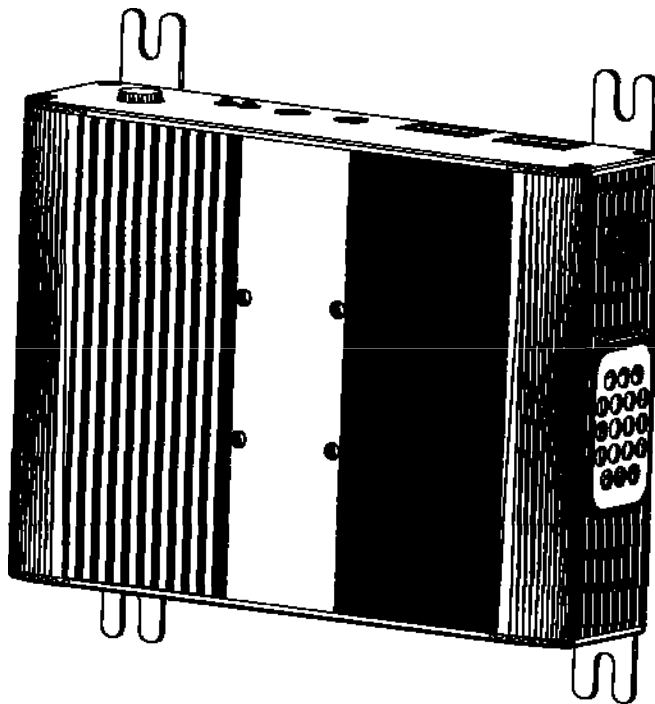
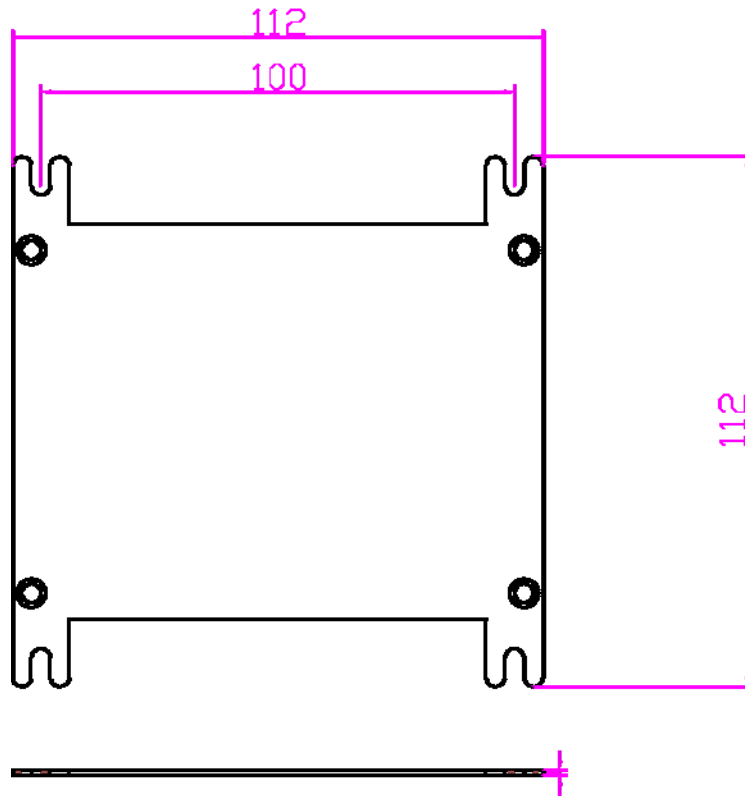
6. Mechanical Dimensions



Dimensions in millimeters

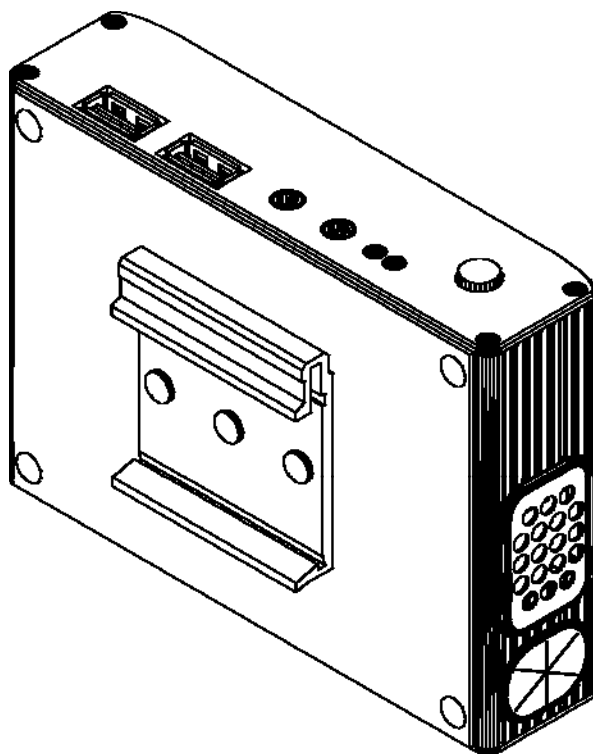
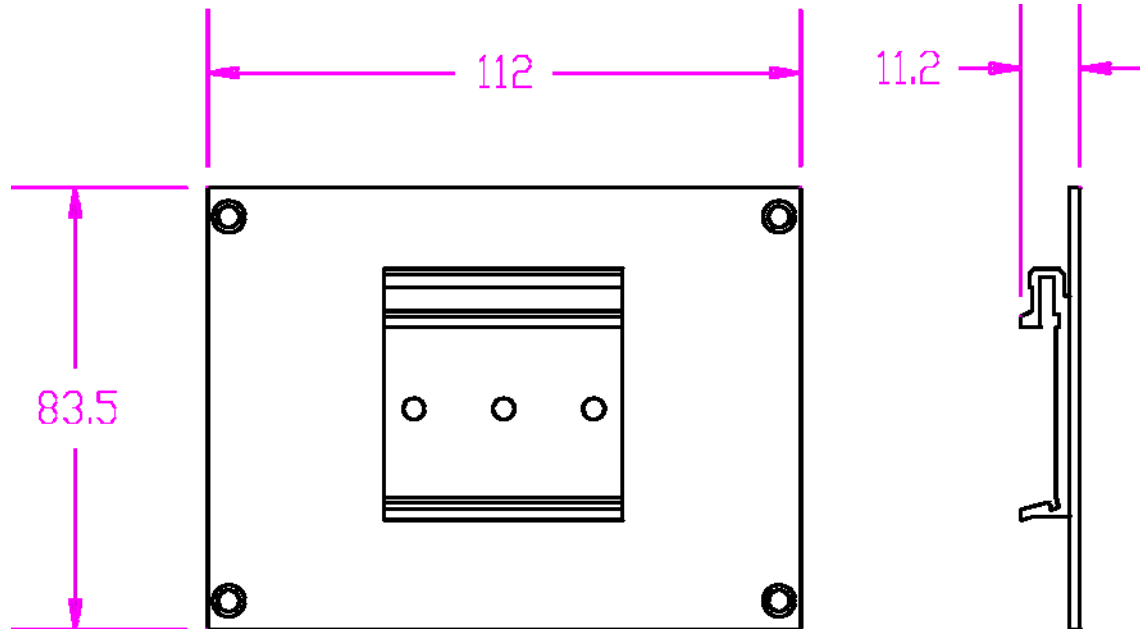
7. Mounting your PC to a monitor

VESA Mounting Kit Dimension



8. Install your DIN-Rail Mounting Kit

DIN-Rail Mounting Kit Dimension

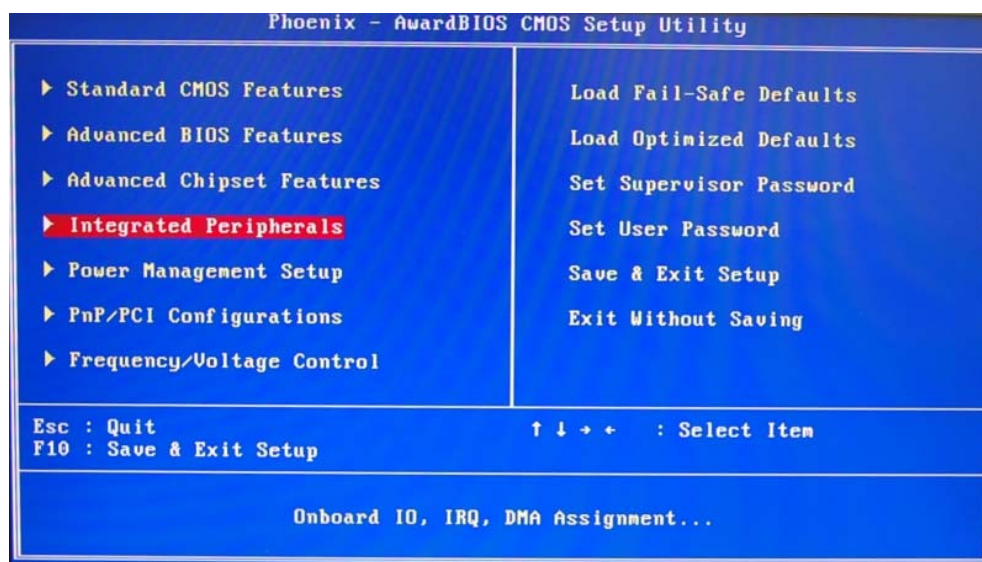


9. AWARD BIOS Setting COM port

Main Menu

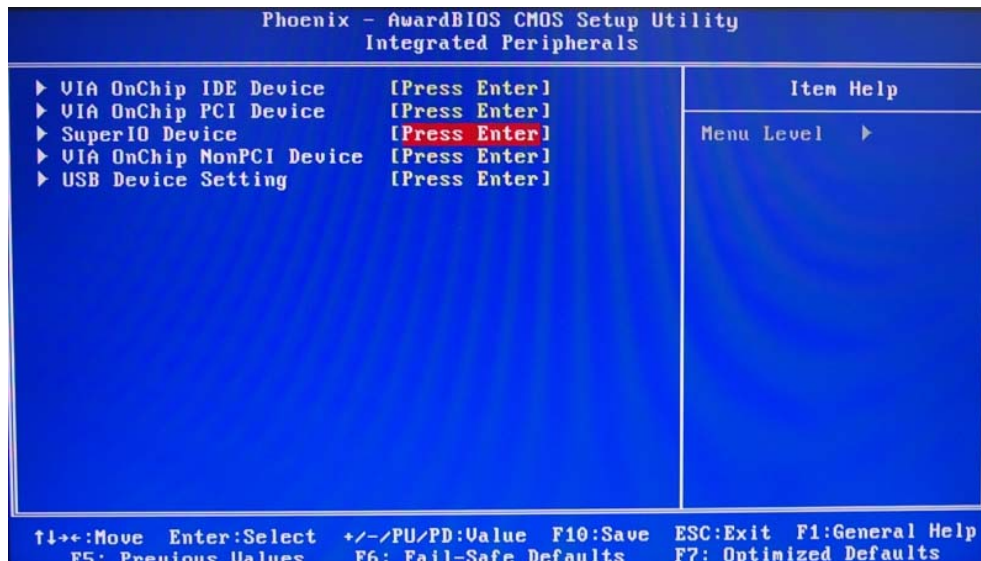
The BIOS Setup is accessed by pressing the “DEL” key after the Power-On Self-Test (POST) memory test begins and before the operating system boot begins. Once you enter the BIOS Setup Utility, the Main Menu will appear on the screen. The Main Menu provides System Overview information and allows you to set the System Time and Date.

Now use the “<” and “>” cursor keys to navigate to “Integrated Peripherals” menu screen, and depress “Enter”.



Integrated Peripherals Sub-Menu

Use the “Down” cursor keys to navigate to “Super IO Device” menu screen, and depress “Enter”.



Super IO Device Sub-Menu

From this menu, Use the “UP”, “Down” cursor keys and “Enter” key to select COM port “ADDRESS” with IRQ number. The default value was setting as following picture.

