



BLANCCO MANAGEMENT CONSOLE FOR WINDOWS

Manual for version 4.10

v4.10.

18.2.2010

TABLE OF CONTENTS

INTRODUCTION	4
Corporate approach	4
Recycling / Warehoused devices approach	4
OPENING THE MAIN PAGE.....	5
SERVICES INCLUDED IN DIFFERENT INTERFACES	6
CREATE A FLOPPY DISK	7
DOWNLOADING A CD IMAGE.....	8
Adding the *.iso image type to the MIME list.....	8
VIEWING THE ERASURE STATUS	11
IMPORTING REPORTS	12
BROWSE REPORTS	14
SETTINGS PAGE	15
CHANGING THE DATA ARCHIEVE FOLDER SETTINGS.....	16
SEARCH	17
EXPORTING REPORTS TO DIFFERENT FILE FORMATS	18
Changing settings in Export tool	20
Create a scheduled exporting task	21
LICENSE INFORMATION PAGE	27
Setting licence alerts.....	28
SMTP Alerts	28
Activate new products	29
View HASP Information.....	29
STATISTICAL INFORMATION	30
CONTACT BLANCCO SERVICE	31

Glossary

ITEM	EXPLANATION
PXE	Preboot eXecution Environment is an environment to boot computers using a network interface
TFTP	Trivial File Transport Protocol (TFTP) is a very simple file transfer protocol
Network booting	Network booting is the process of booting a computer from a network rather than a local drive.
ERP	Enterprise resource planning (ERP) is an enterprise-wide information system designed to coordinate all the resources, information, and activities needed to complete business processes such as order fulfillment or billing.
KVM Switch	A KVM switch (with KVM being an abbreviation for Keyboard, Video or Visual Display Unit, Mouse) is a hardware device that allows a user to control multiple computers from a single keyboard, video monitor and mouse.
Barcode reader	A barcode reader (or barcode scanner) is an electronic device for reading printed barcodes. Like a flatbed scanner, it consists of a light source, a lens and a light sensor translating optical impulses into electrical ones.
Basic Authentication	In the context of an HTTP transaction, the basic access authentication is a method designed to allow a web browser, or other client program, to provide credentials – in the form of a user name and password – when making a request.
MIME type	An Internet media type[1], originally called a MIME type after MIME and sometimes a Content-type after the name of a header in several protocols whose value is such a type, is a two-part identifier for file formats on the Internet. There are many predefined MIME types, such as GIF graphics files and PostScript files. It is also possible to define your own MIME types. E.g. *.iso files like in this product
CSV	A comma-separated values (CSV) file is used for the digital storage of data structured in a table of lists form, where each associated item (member) in a group is in association with others also separated by the commas of its set.
XML	XML (Extensible Markup Language) is a set of rules for encoding documents electronically. It is defined in the XML 1.0 Specification produced by the W3C and several other related specifications; all are fee-free open standards.[3]
HTML	HTML, which stands for Hyper Text Markup Language, is the predominant markup language for web pages. It provides a means to create structured documents by denoting structural semantics for text such as headings, paragraphs, lists etc as well as for links, quotes, and other items.

INTRODUCTION

Blancco Management Console for Windows is designed for:

- Managing and receiving the audit trails/erasure reports from the asset manager, erasure software (PC, Server or Data Centre) or profiling processes at one location
- Browse, modify and delete audit trails
- Distribution channel for *.iso images and PXE/TFTP network booting images
- Provides a robust solution to handle and erase a large number of computers
- Acts as a interface for synchronizing the Blancco database inside an organization's asset management databases or ERP databases

Corporate approach

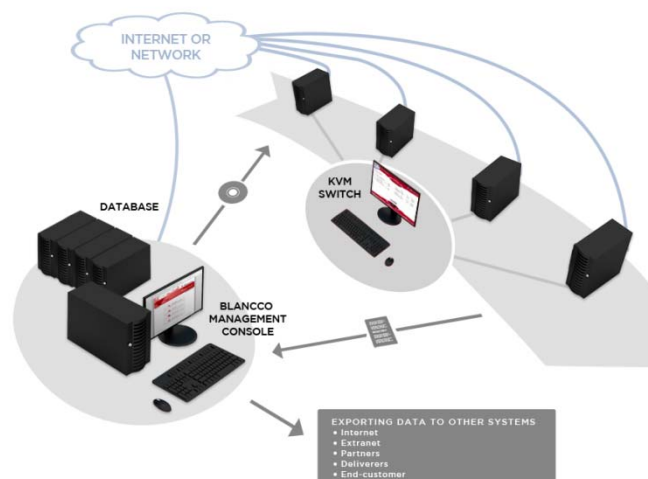
Blancco Management console can be used as an all-in-one solution around the data erasure needs. All the necessary information about the erasure can be found from this location. Erasures can be performed all over the organization and the distribution of the erasure client can be done via several different methods such as: *.msi package(push) or *.iso image(pull & burn). The network boot image and service for PXE/TFTP protocol is also available.

Reports from the erasure client can be sent directly to the database where they can be integrated to the internet, extranet, ERP or other databases. Additional fields inside the erasure client can be added for easier invoicing or asset recovery.

Recycling / Warehoused devices approach

Blancco Management console can act as a robust solution for recyclers or IT asset disposal companies. It provides access to all the different distribution methods of the erasure software(*.iso, networkboot/PXE boot). By having a KVM switch, several desktop units can be erased just by attaching the minimum amount cables to the devices.

Reports from the erasure client can be sent directly to the database where they can be integrated to the internet, extranet, ERP or other databases. During the reporting process the barcode readers can be used in order to improve and speed up the process. Additional fields inside the erasure client can be added for easier invoicing or asset recovery.



OPENING THE MAIN PAGE



Blancco Management Console for Windows main page the public user view (default).

The main page of Management Console for Windows operates as a web browser. In order to open the browser window of Management Console for Windows, please select the addresses below. In the following page you may find the various functions of the given addresses.

Main window for restricted user:

<http://localhost/bls/bls.asp>

Requirements:

Anonymous connection defined from Internet Information Services for this website or authentication with Basic Authentication (not ON as default in erasure software).

Main window for admin user:

<http://localhost/blsadmin/bls.asp>

Requirements:

Same as restricted user or at least integrated windows authentication

SERVICES INCLUDED IN DIFFERENT INTERFACES



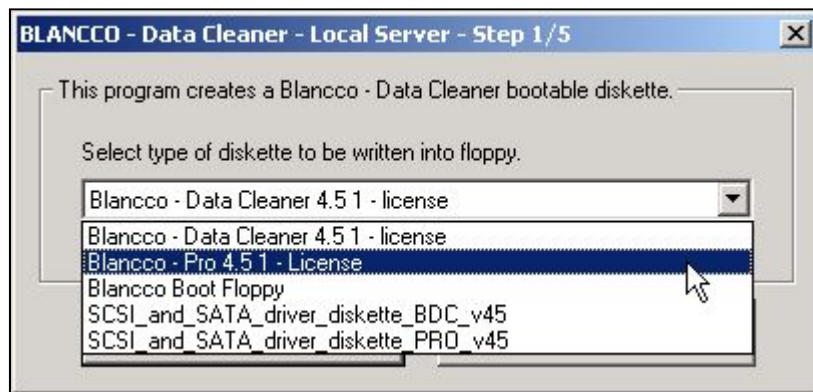
Blancco Management Console main page from the admin user view.

Public/anonymous user interface: http://localhost/bls/bls.asp	Admin user interface: http://localhost/blsadmin/bls.asp
<ul style="list-style-type: none"> • Creating Blancco floppies • Downloading CD image • View erasure status • Importing reports to the database • Help –file <p>Optional: Browse reports, select fields to be shown, edit and delete reports.</p>	<ul style="list-style-type: none"> • Creating Blancco floppies • Downloading CD image • Browsing data erasure and inventory reports ✓ Settings <ul style="list-style-type: none"> ▪ Select default time frame for browsing reports ▪ Allow Public/anonymous user interface to view reports ▪ Allow Public/anonymous users to edit and delete reports ▪ Select fields to be shown in Reports view • Importing reports to the database • View erasure status (not on as default) • License information • Statistical Information • Help –file

CREATE A FLOPPY DISK

In order to create floppies, you need to perform the following steps:

1. Click the “Create floppy disk” link either from the normal or admin view.
2. Press “Run” when the security warning pop-up appears.
3. Press “Run” when there is a complaint that the publisher could not be verified.



4. You should see the above screen, which allows you to select the desired image to be written onto a floppy disk from a dropdown menu. Select the image and press, “Continue”.
5. Select “Start” to proceed with the floppy creation process.
6. Wait for the process to end.
7. The floppy has now been created. Select “Create New Diskette” in order to create more Blancco floppies or “Close” in order to quit creating floppies.

Administrator:

Floppy images are stored in the “:\Blancco Management Console for Windows\Images” folder. When receiving new images you can copy the files to this location. The names of the files can also be renamed as desired, but special symbols e.g. (!#%) should be avoided. Make sure that the files are not in ‘read only’ state.

Note for USB floppy disk drive users

USB attached floppy disks can create only 1,44Mb size floppies. Blancco erasure software is using 1,68Mb size in order to get the maximum space. Floppy support was drop down starting 4.8 version.

DOWNLOADING A CD IMAGE

From this link the *.iso image(s) for creating a Blancco erasure software CD can be downloaded to a desired location. Below you will find simple instructions on how to burn Blancco CDs with Disk Burning software:

1. Save the .iso -file to the hard disk
2. Open your Disk Burning software in advance
3. Select the “Burn CD Image” option

If you need more detailed information for burning a CD image, please check from here: <http://www.blancco.com/en/help+support/faqs/>

Administrator:

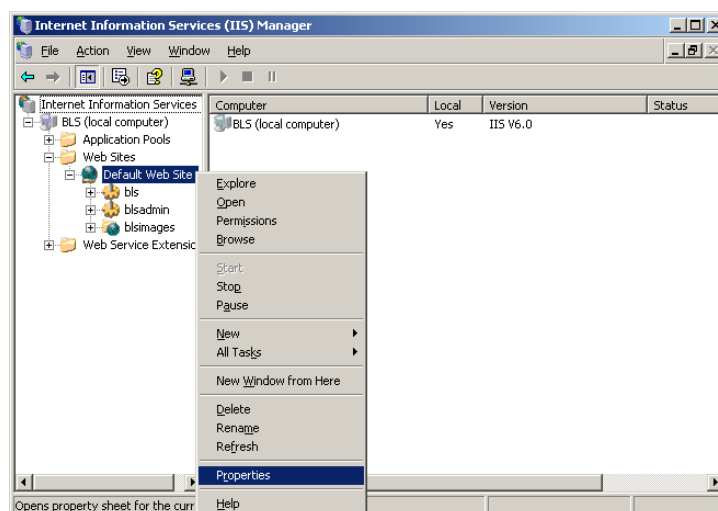
CD images can be stored in the root of the “:\Blancco Management Console for Windows\Images” folder. When receiving new images, you can copy the files to this location. The names of the files can also be renamed as desired, but special symbols e.g. !#¤”) should be avoided. Make sure that the files are not in ‘read only’ state.

Important! Check the settings from chapter below if there is problems with the download.

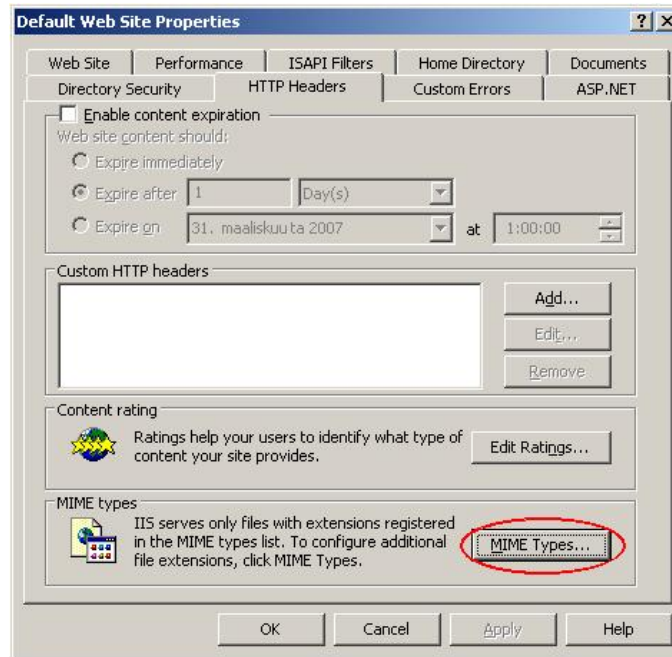
Adding the *.iso image type to the MIME list

Multipurpose Internet Mail Extension (MIME) types allow for the exchange of different kinds of files on the Internet. Although browsers usually have their MIME types set automatically, in some cases you may have to set them up manually. MIME types almost always have to be configured manually on a Web server.

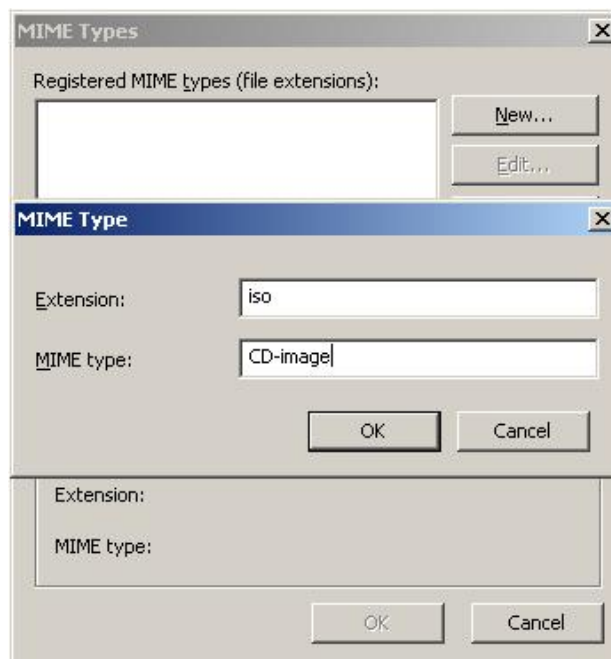
Open “**Start**” -> “**Administrative Tools**” -> “**Internet Information Services (IIS) Manager**”



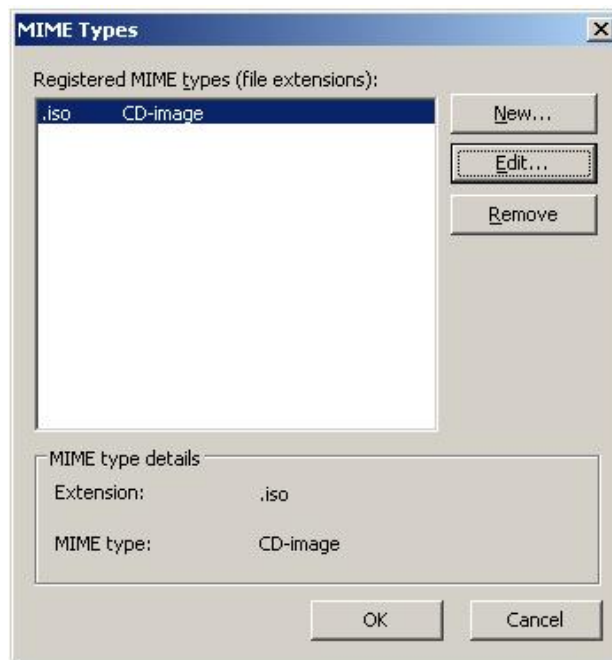
Right-Click the Blancco Management Console for Windows web site (Default Web Site) and select “**Properties**”.



Select the **"HTTP headers -tab"** and click, **"MIME Types"**.



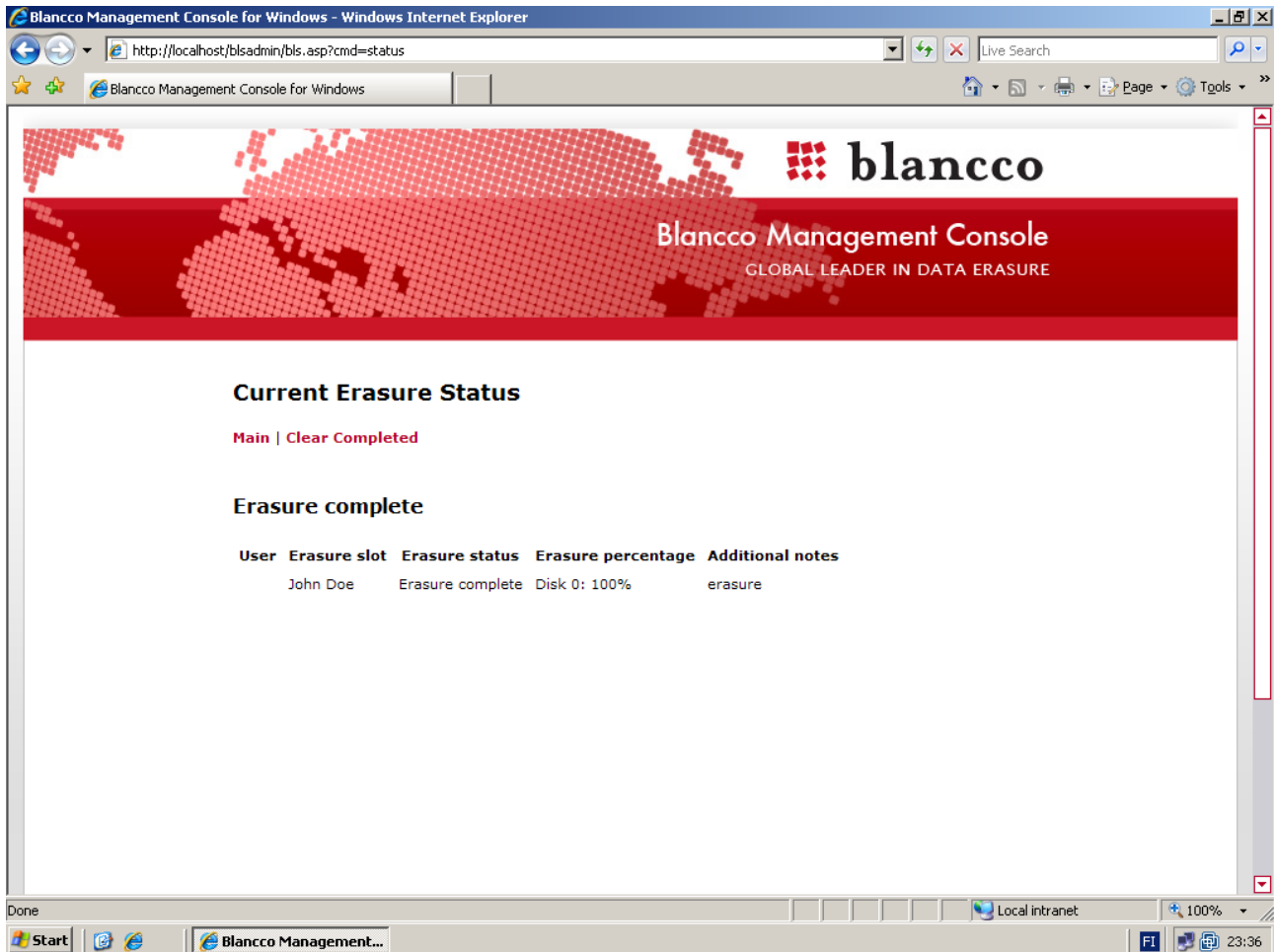
Click, **"New"** and type **"iso"** to the **"Extension"** -field and **"CD-image"** to the **"MIME type"** – field. Click, **"OK"** to continue.



Make sure that the **“.iso”** extension is shown in the Registered MIME-types list and click, **“OK”** to continue.

Click **“Apply”** on the **“Default Web Site Properties”** window and close it.

VIEWING THE ERASURE STATUS



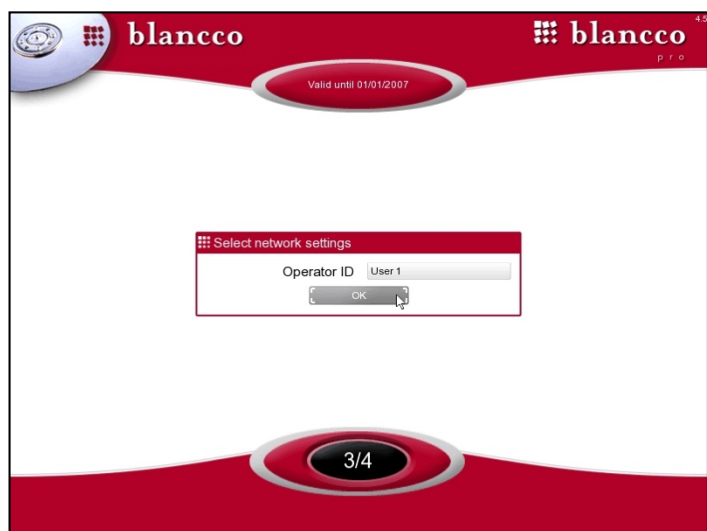
Blancco Management Console, Erasure Completed Screen.

Blancco's erasure software is able to send progress messages to the server. This option has been enabled from the erasure software. *This feature is not included to the erasure client as a default.*

When the reporting feature is enabled, the erasure software will ask the user for the Operator ID right before the erasure begins. (See picture on right). The Operator ID is placed on "Erasure slot" in the Management Console view. See picture above ("John Doe").

Note that the Operator ID information is not stored to the database.

Starting from 4.9 Blancco client we can offer automatic operator id/slot id filling by using asset tag, serial number or mac address as a value.



IMPORTING REPORTS



Blancco Management Console, Importing new erasure reports (picture 1/2)

At this point the user is able to define the report file to be imported into the Blancco Management Console (e.g. a:\report-2644777446.xml or a all.xml) and browse for the file from a possible location.

If several reports have been saved on the floppy/USB stick, the Blancco client erasure software will create an all.xml file. By uploading this file, you can easily upload all of the erasure reports from that media. Blancco Management Console will check that the report with the same report ID cannot be uploaded to the database.

Note! As default IIS security settings limit the uploaded file size, please check from the Installation manual more information about changing the size of this. Upload problems with default settings occur when the file size of the all.xml file goes over 200kb.

Blanco Management Console for Windows

[Main](#) | [Browse Reports](#) | [Import reports](#)

Number of new reports stored to database: 2

ID	product	Amount of licences consumed
1	Blanco Asset Manager	1
3	Blanco PC Edition	1

ReportID:
8665178587, 6355293195

Number of existing reports: 1

ID	product	Amount of reports
3	Blanco PC Edition	1

ReportID:
4752124160

Number of reports which does not have licences: 1

ID	product	Amount of reports
4	Blanco Server Edition	1

ReportID:
6355293196

Total number of reports tried to import: 4

ID	product	Amount of reports
1	Blanco Asset Manager	1
3	Blanco PC Edition	2
4	Blanco Server Edition	1

ReportID:
8665178587, 6355293195, 4752124160, 6355293196

Blanco Management Console, Importing new erasure reports and possible problems (picture 2/2)

After the importing process an overview from the importing results will be generated. Following items will be reported:





















1. Number of new reports stored to the database
2. Number of existing reports
3. Number of reports which does not have licenses
4. Total number of reports tried to import
5. Number of discarded report (Missing from the example)
 - a. Discarded reports will appear when there is no functional database connection or data is corrupted.

BROWSE REPORTS

Reports

[Main](#) | [Search](#) | [Import reports](#) | [Settings](#) | [Delete Selected Reports](#)

93 reports





			Date/Time	PC Brand	PC Model	MHz	Memory	Hard Disk Capacity	Asset Tag	
			13.10.2004 14:39:00	Compaq	Evo D510 SFF	1994 MHz	248MB	40 GB	FR24923385	
			18.10.2004 14:17:00	Compaq	Deskpro	647 MHz	128MB	10 GB	8035DKYB0036	
			18.10.2004 14:18:00	Compaq	Deskpro EN Series	448 MHz	128MB	10 GB	8927BW5D0097	
			18.10.2004 14:18:00	Compaq	Deskpro	647 MHz	128MB	10 GB	8015DKYB0023	
			18.10.2004 14:19:00	Compaq	Deskpro	647 MHz	128MB	10 GB	8018DKYB0087	

Blancco Management Console, Browsing reports

By selecting Browse reports from the main menu you can access the view that shows all the reports in the database. To sort the erasure reports, click the field name (e.g. Date, Company, User) that is above the report columns.

From this page you can also send queries to the database (Search) and then change the layout settings (Settings).

On the report browser page the user is able to view all of the erasure and inventory reports. Below are the definitions of the symbols:

-  Full erasure report for selected unit
-  Only hardware information report
-  Possibility to edit existing report
-  Report generated from Blancco erasure client family

SETTINGS PAGE

Modify Reports View

Main | Browse Reports

Select default time frame, when opening Reports view.

Show All

Allow users to view reports.

Allow users to edit and delete reports.

Select fields to be shown/hidden in Reports view by clicking appropriate item. Moving items up moves them left in Reports view, so the topmost item exists in left side of the view.

[hide]	Date/Time	[up]	[down]	[up 5]	[down 5]	[first]	[last]
[hide]	PC Brand	[up]	[down]	[up 5]	[down 5]	[first]	[last]
[hide]	PC Model	[up]	[down]	[up 5]	[down 5]	[first]	[last]
[hide]	MHz	[up]	[down]	[up 5]	[down 5]	[first]	[last]
[hide]	Memory	[up]	[down]	[up 5]	[down 5]	[first]	[last]
[hide]	Hard Disk Capacity	[up]	[down]	[up 5]	[down 5]	[first]	[last]
[show]	Unique ID	[up]	[down]	[up 5]	[down 5]	[first]	[last]

From this page you can modify following options:

1. Select the default time frame for displaying reports in browse reports page
2. Allow Public/anonymous user interface to view reports. Simply activate the checkbox.
3. Allow Public/anonymous user interface to edit and delete reports. Simply activate the checkbox.
4. Select fields that are shown/hidden in the browse reports page. By clicking **“hide”** the selected fields will be removed from the main view and by clicking **“show”** the selected fields will be added to the main view. On the right side of each field you can select the alignment order of the field on the main report view. In the picture above the Date/Time field is the first field when reading from left to right. If you would like to have the “Memory” field as the first field, you would need to simply click the **“[first]”** link on the side of the value.

CHANGING THE DATA ARCHIEVE FOLDER SETTINGS

From the components folder you can find 3 different DataArchive*.reg files for defining settings for DataArchive folder settings.

DataArchiveFolder.reg In this file you can define the destination folder for sending the original Blancco Client XML reports to. You can use e.g. network shared folder

DataArchiveON.reg This file will simply change the DataArchiving feature ON

DataArchiveOFF.reg This file will simply change the DataArchiving feature OFF

SEARCH

The quick selection offers the possibility to search for a specific report according to a given time limitation (e.g. week or month).

The user is also able to type a specific time limitation (Enter dates manually). **Note!** The following date formats are suitable for the date fields:

dd.mm.yyyy dd/mm/yyyy
dd/mm/yy dd-mm-yyyy

The last search criteria, is based on free text defined by the user. This means that the user is able to fill in a word or a phrase that is searched from the erasure reports. In the picture on the right, the user is searching for "68063148A". The results will be shown in the main report screen and the number of found reports is calculated. See the picture below.

Search Reports

[Main](#) | [Browse reports](#)

Select date criteria

Make quick selection

Or

Enter dates manually:

from date:

to date:

Search reports containing text:

Reports

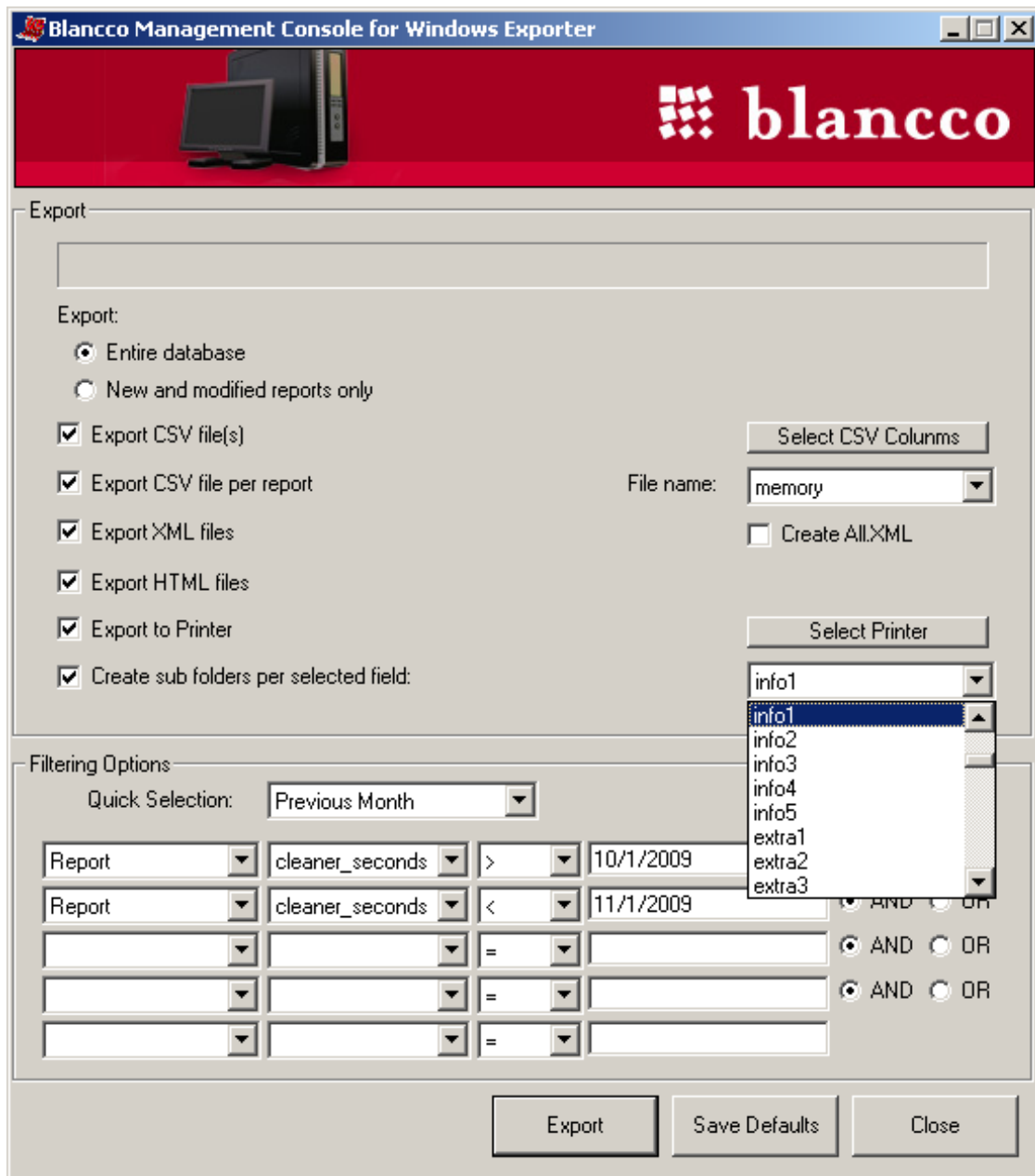
[Main](#) | [Last 100](#) | [Last 500](#) | [Search](#) | [Settings](#) | [Profiled](#) | [Erased](#) | [Profiled and Erased](#) | [Delete Selected Reports](#)

2 reports

			Date/Time	PC Brand	PC Model	MHz	Memory	Hard Disk Capacity	Serial Number	
			13.3.2007 9:48:21	Nec	LL700/G	1600 MHz	703 MB	80 GB	68063148A	<input checked="" type="checkbox"/>
			13.3.2007 8:50:21	Nec	LL700/G	1600 MHz	703 MB	80 GB	68063148A	<input checked="" type="checkbox"/>

Search is performed from these fields	
[report].[memory]	[report].[info1]
[report].[mb_chipset]	[report].[info2]
[report].[bios_info]	[report].[info3]
[report].[bios_version]	[report].[info4]
[report].[bios_date]	[report].[info5]
[report].[bios_serial]	[report].[extra1]
[report].[bios_make]	[report].[extra2]
[report].[bios_model]	[report].[extra3]
[report].[assettag]	[report].[extra4]
[report].[serial]	[report].[extra[...]]
[report].[mac]	[report].[extra25] Note! There is up to 25 extra fields
[report].[usb_ports]	[report].[hdsizes]
[report].[usb2_ports]	[report].[pccheck]
[report].[firewire_ports]	[report].[cleaner_seconds]
[report].[company]	[report].[mhz]
[report].[person]	

EXPORTING REPORTS TO DIFFERENT FILE FORMATS



When there is a need to send one or especially several reports to be analyzed or checked you can use a tool called BMCWExporter.exe. This tool can be found from Start -> All Programs -> Blancco Management Console for Windows -> Blancco Management Console for Windows - Export or directly from the “:\Blancco Management Console for Windows \Components” folder.

Confirm the export file path location by checking [settings](#) from the next page.

The following options are available inside the tool:	
Function	Description
Entire database	Use this option if you want to be sure that the entire database will be always searched with defined criterias.
New and modified reports only	Every time a report(s) is exported, you will not be able to export the report again if you do not unmark this option. If you modify a report you will be able to export it again one more time. <i>Consider using this option when having the exporter tool running as scheduled option.</i>
Export CSV file(s)	Data is exported as a CSV file containing all the reports in one file.
Export CSV file per report	Data is exported as individual CSV files containing only one report for each file. You can also define specific CSV columns to be added into the file(s) and a field from report table that will be used as file name for the CSV file.
Export XML files	Data is exported as individual XML files to an XML folder. You can also export the reports into a one large all.xml file for easy file transfer.
Export HTML files	Data is exported as individual HTML files to an HTML folder.
Export to Printer	Search results will be sent to the default printer and will be printed immediately as individual reports.
Create sub folders per selected field	You can sort the search results according to selected fields. E.g. extra1 would be labeled as projectid in the erasure software. By selecting extra1 from the dropdown menu you would be able to easily sort reports under different project folders.
Create all.xml	Generates a all.xml file that contains all the reports inside of the query.
Filtering options	You can filter data in detailed manner by generating different queries towards the database with different parameters given. You can also select what condition is used in the generated SQL sentences.
Quick Selection	You can search reports automatically from a certain time frame. This also helps you to understand how an date based search is carried out.

Changing settings in Export tool

Blancco Management Console allows the possibility to modify the destination folder names and locations. These settings can be found in the registry.reg file. Changes are applied to the registry in the following location: [HKEY_LOCAL_MACHINE\SOFTWARE\Blancco\BMCW]. You can activate the changes by saving the file after the changes, and then double clicking the file and confirming that you would like to modify the registry.

Please see the options and explanations below:

"RecordSeparator"=";"	Record separator inside the CSV files
"SubRecordSeparator"=" / "	Record separator for records inside the record itself
"ExportPath"="C:\\"	Destination folder for the search results. If you are using a mapped network drive remember to add the letter. Notice also that a "\\\" means only "\"
"CSVPerReportFolderName"="CSV_Per_Report"	CSV Report folder name
"CSVFolderName"="CSV"	Name of the folder for CSV files
"XMLFolderName"="XML"	Name of the folder for XML files
"HTMLFolderName"="HTML"	Name of the folder for HTML files

Create a scheduled exporting task

In order to create a scheduled task to export automatically your reports, please perform the following steps.

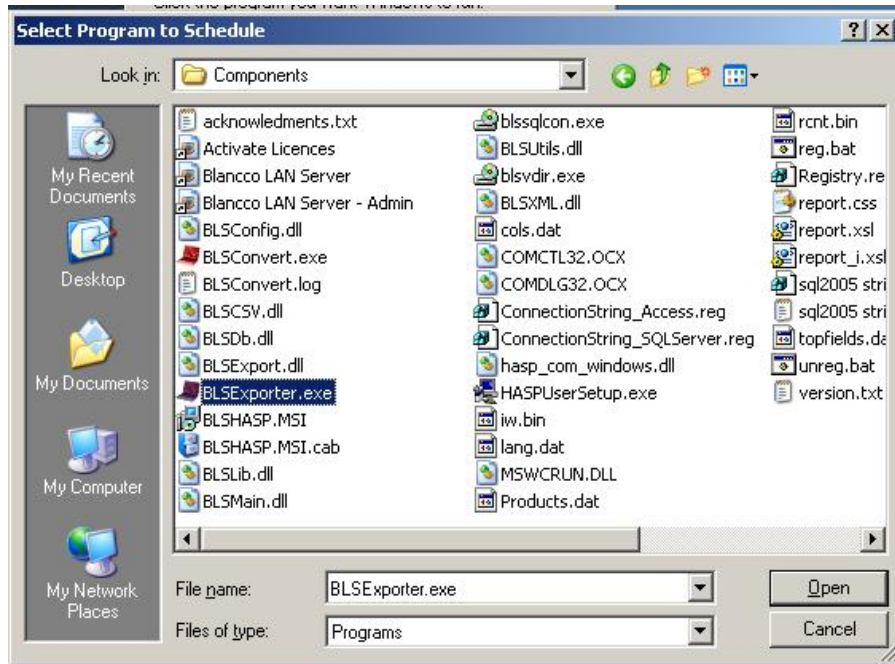
Open “Start” à “Control Panel” à “Scheduled Tasks” à “Add Scheduled Task”. Window below should exist



Press “Next”.



Click on “**Browse**” in order to select the application you want to schedule. In our case, select BMCWExporter.exe in the “\Blanco Management Console for Windows \Components” folder.



When you have selected BMCWExporter.exe, click on **“Open”**, and click on **“Next”**.



Choose how often the task should be executed and enter the name for this task, then press **“Next”**.

Scheduled Task Wizard

Select the time and day you want this task to start.

Start time: 2:02 PM

Perform this task:

- Every Day
- Weekdays
- Every 1 days

Start date: 5/21/2007

< Back Next > Cancel

Choose the date and the time for the task to be started and click **“Next”**.

Scheduled Task Wizard

Enter the name and password of a user. The task will run as if it were started by that user.

Enter the user name:

Enter the password:

Confirm password:

If a password is not entered, scheduled tasks might not run.

< Back Next > Cancel

Enter the user name, and the password and press **“Next”**.



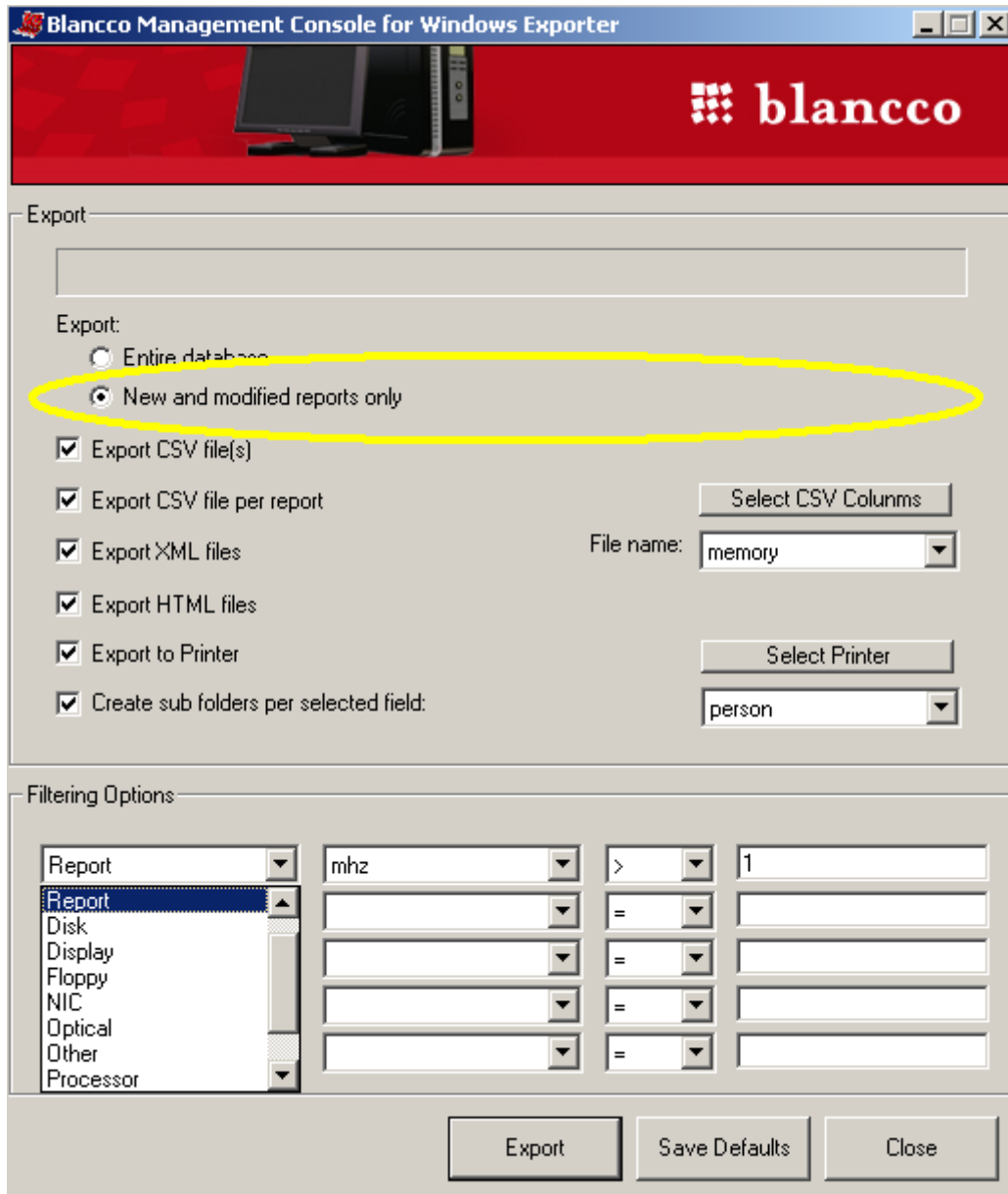


Check “**Open advanced properties for this task when I click Finish**” and click “**Finish**”.

In the field “**Run**”, after the quotation marks, add “**/q**”. Please check the right way from the picture above. Click “**OK**”.

The scheduled task has been set up, but you need to still go to back to BMCWExporter.exe tool and confirm that the default search conditions have been saved properly.

If you do not want to always include the already processed reports in the search queries you should check **“New and modified reports only”** (See picture below). This is recommended in order to achieve better performance. Also, select the other conditions for the search, perform a manual test and then press the **“Save Defaults”** and click **“Close”**. Now the search method that you set up to be the default will be executed according to the set schedule. If you want to change the settings run this process again.



LICENSE INFORMATION PAGE

From the license information page you can see the date when the first license was used, the number of licenses downloaded as a floppy, and the total number of network boot(s) from each product that you have been using. The total number of received reports is also displayed.

License is consumed immediately when the erasure has been started from the erasure client. Therefore there might be differences between number of network boots and total number of used licenses or amount of reports in the databases.

There also might be a difference between the consumed licenses and amount of reports in the database. This due to a fact that erasure client reports are invoiced only once when they are entering first time into a Blancco Management Console for Windows, Linux or blaccoservice.com. For example, if you are exporting reports from blaccoservice.com and you are importing them to Management Console for Windows these reports will not be invoiced again.

Licence use details	
Main Update HASP information View HASP information Set licence alerts	
Licence data for Blancco: Download	
Blancco Asset Manager	
Date on which first licence was used:	30.11.1999
Date on which last licence was used:	30.11.1999
Number of reports in the database:	4
Number of downloaded floppy licenses:	0
Number of performed network boots:	0
Number of licences remaining in HASP:	982
Licence in HASP valid until:	31.12.2009
Total number of used licenses:	0
Blancco PC Edition	
Date on which first licence was used:	22.1.2009
Date on which last licence was used:	26.1.2009
Number of reports in the database:	3758
Number of downloaded floppy licenses:	0
Number of performed network boots:	7
Number of licences remaining in HASP:	953
Licence in HASP valid until:	31.12.2009
Total number of used licenses:	7

If you need to send the license information to Blancco, please take a screen shot from an entire license page, view hasp information page and send this to your sales representative.

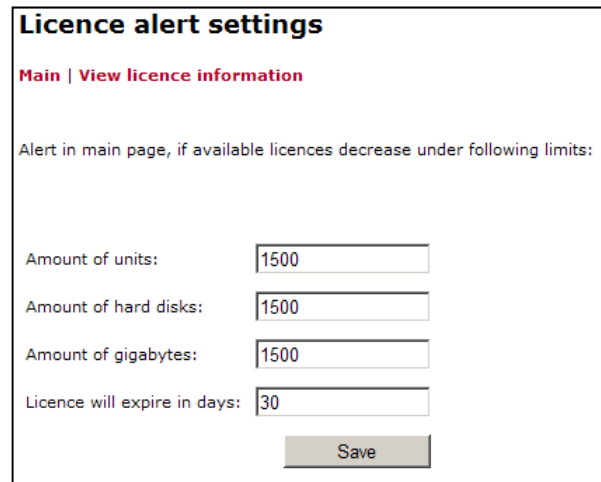
“License data for Blancco” is used only in specific scenarios.

Setting licence alerts

You are able to define specific limits for the license amount and validation date so that you are able to contact your sales agent early enough before the software will expire. You can access the license alert settings by going to the license information page and clicking “**Set license alerts**”.

Important! License alert is checking the license situation only when you are sending or importing reports.

Sending will trigger this service only if the user that is used to communicate from erasure software (e.g. Anonymous User) has rights to modify the [HKEY_LOCAL_MACHINE\SOFTWARE\Blancco\BMCW] registry values. You can add permissions for the desired user by using the regedit tool. Use regedit tool by clicking “Run” and then type “regedit”.



SMTP Alerts

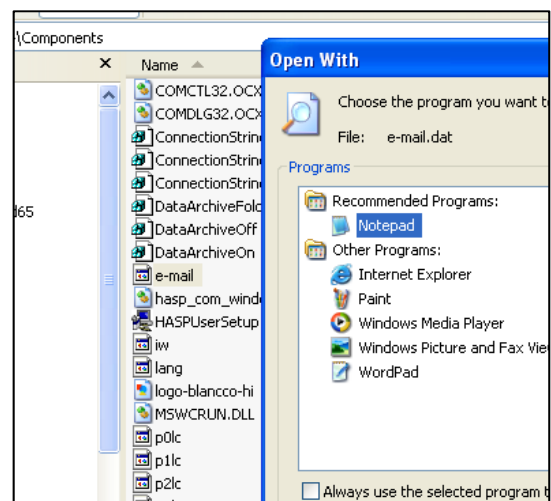
Starting from 4.10 Management Console you are able to use your SMTP server to send email when licenses have been expired.

Simply fill in the sender e-mail, where to e-mail, desired subject for the message and naturally the SMTP server to be used for the email sending. SSL/TLS connection to SMTP servers is not supported.



Changing the e-mail message

You can modify content of the e-mail to be sent simply by modifying the e-mail.dat file in the components folder. You can modify the template in some editor. E.g. notepad.



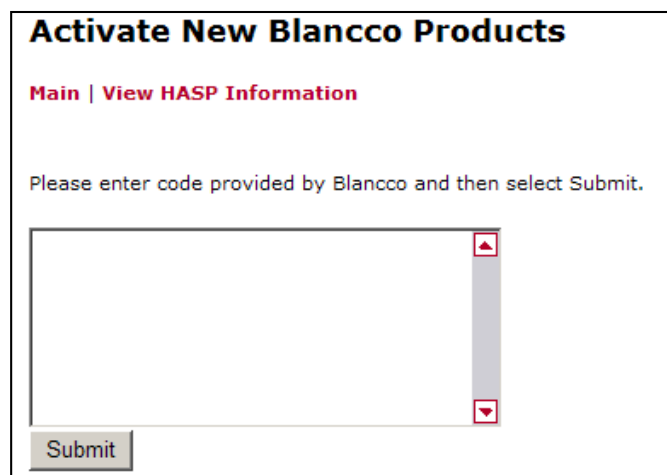
Activate new products

By clicking this option you will enter a page where you can copy and paste the activation key downloaded from blanccoservice.com or sent by the Blancco Service Team/ Your sales agent.



After clicking “**submit**” you will receive detailed information on which products the update has effected. In the picture on the right, 3 products have been updated. Blancco Management Console for Windows (Prod=15) with 1 license expiring at 1700 hours on the 30th of August 2006, Blancco PC Edition (Prod=3) with 5000 licenses expiring at 1700 hours on the 15th of July 2006 and Blancco Server Edition (Prod=4) with 1000 licenses expiring at 1700 hours on the 15th of August 2006.

Note! When the Blancco Management Console for Windows license expires you will no longer have access to the functions inside of the tool. You need to activate a new license.



View HASP Information

Here you can view the license and expiration dates in one layout. Please make a note of the information displayed on this screen so you are aware of the expiration dates and the number of licenses.

STATISTICAL INFORMATION

This page is designed to gather the most basic statistical information from the data, which has been sent to the Management Console for Windows. We are constantly trying to improve the data provided on this page and we look forward to receiving feedback from you. Please email your feedback to support@blancco.com with “Management Console for Windows Statistic page” in the subject section of the email.

CONTACT BLANCCO SERVICE

Connection points to Blancco - Service:

Phone (only for service package): Service engineers can be reached from a dedicated service number during office hours between 8 am and 6 pm (UTC/GMT +2 hours) excluding public holidays

Email and online support forms: Service engineers will respond within 24 hours (only for service package) during weekdays (excluding Finnish public holidays). Enquiries sent during the weekends will get responded to within 72 hours.

Technical support: support@blancco.com

Phone and Fax:

Sales: +358-207-433-850

Support: +358-207-433-860

Fax: +358-207-433-859

Address:

Blancco Ltd.
Länsikatu 15
FIN-80110 Joensuu
Finland

Please visit our homepage (<http://www.blancco.com>) for more information on our products and our local offices around the world.

We are always looking to improve our products. Please let us know if you have any suggestions!

For further information, please visit
WWW.BLANCCO.COM



Blanco Oy Ltd.
Länsikatu 15
80110 Joensuu
Finland

Tel: +358 207 433 850
Fax: +358 207 433 859
sales@blancco.com
www.blancco.com