

MX44UHD User Manual



Thank you for purchasing this product. For optimum performance and safety, please read these instructions carefully before connecting, operating or adjusting this product. Please keep this manual for future reference.

SURGE PROTECTION DEVICE RECOMMENDED

This product contains sensitive electrical components that may be damaged by electrical spikes, surges, electric shock, lightning strikes, etc. Use of surge protection systems is highly recommended in order to protect and extend the life of your equipment.

Table of Contents

1. Introduction.....	4
2. Features.....	4
3. Panel Descriptions.....	4
4. Remote Control Descriptions.....	6
5. Application Diagram.....	7
6. Specifications.....	8
7. Package Contents.....	8
8. RS-232 Pin Assignment.....	9
9. DIP for EDID Setting.....	9
10. GUI control.....	10
11. Maintenance.....	20
12. Exclusive Remedies.....	20

Introduction:

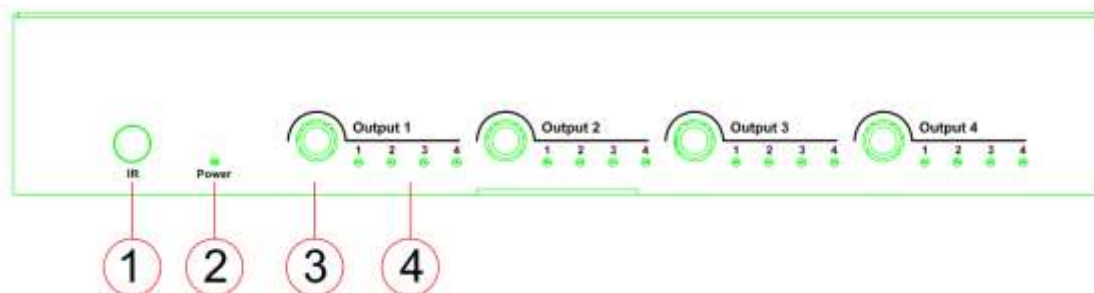
The MX44UHD is 4x4 Matrix with IR matrix for HDMI routes four Hi-Def sources to any four HDTV displays, supporting 1080p Full HD up to 4K plus all 3D formats, along with multichannel digital audio formats such as Dolby® True HD and DTS-HD® Master Audio™. Each source can be routed to any display using the front-panel push buttons, IR remote control and RS-232 interface.

Features:

- Supports resolutions up to 1080p@60HZ, 48-bit deep color, 4k@30HZ
- Allows any source to be displayed on multiple displays at the same time
- Allows any HDMI display to view any HDMI source at any time
- Dolby TrueHD and DTS-HD master audio pass through HDMI output
- Advanced EDID management for rapid integration of sources and displays
- Multiple switching mode, push-in button, IR remote control and RS-232 control
- Easy installation with rack-mounting ears
- Full 3D pass-through.
- HDCP compliant

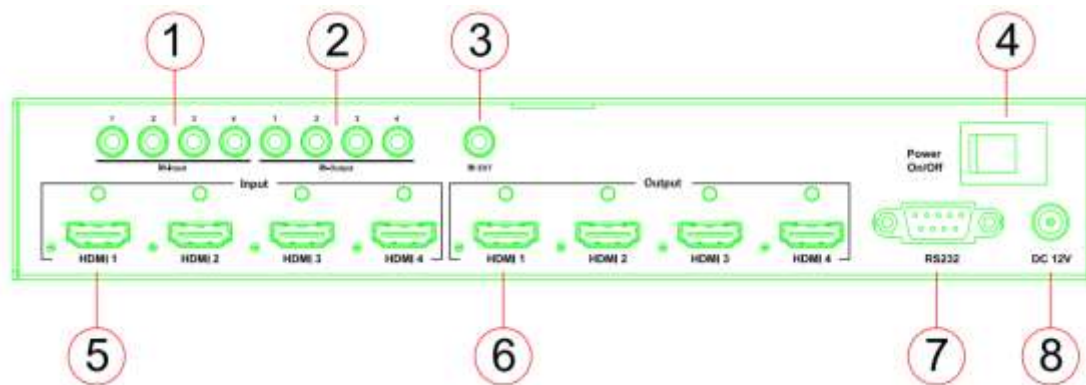
Panel Descriptions

Front Panel



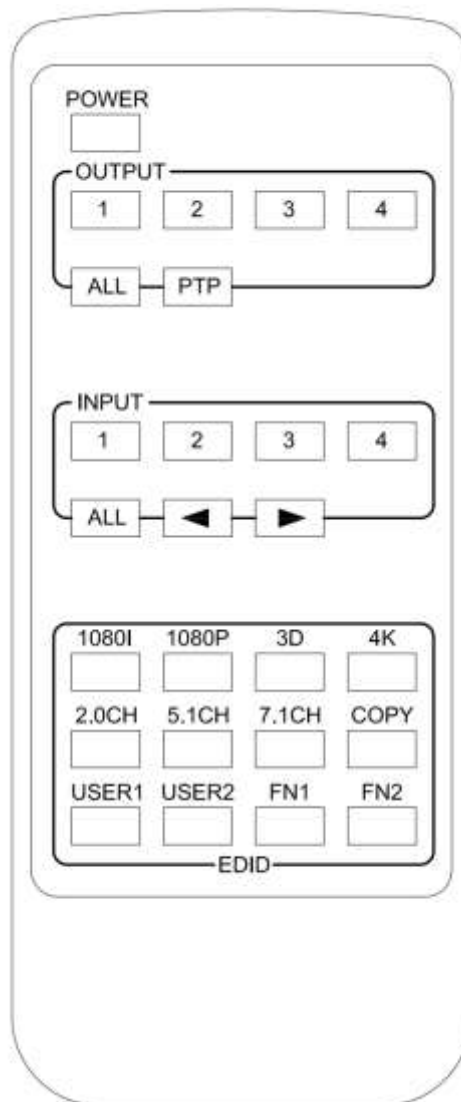
1. IR receiver window---Receive the IR from the remote control of MX44UHD.
2. Power LED indicator---Indicate the status of the power for the matrix.
3. HDMI output selection button 1 to 4---Press to select the output from 1 to 4.
4. Input LED indicator---Indicate the status of the input for the matrix.

Back Panel



1. IR inputs 1 to 4 ---- 3.5mm stereo phone-jack
2. IR outputs 1 to 4 ---- 3.5mm stereo phone-jack
3. IR extension receiver input ---- 3.5mm stereo phone-jack
4. Power switcher---- Press to power on/off the matrix
5. HDMI inputs 1 to 4----Connect HDMI sources
6. HDMI outputs 1 to 4----Output for displays, AVR etc.
7. RS232 female port----Connect to the PC using RS232 cable
8. Power port---Use included DC adaptor to power the matrix switcher.

Remote Control Description



Output and Input select

A. OUTPUT-X select INPUT-Y:

1. Press OUTPUT-X (X means 1 to 4 of outputs) → Press INPUT-Y (Y means 1 to 4 of inputs)
2. Press OUTPUT-X (X means 1 to 4 of outputs) → press the left and right arrow buttons to select the input.

B. All outputs select INPUT-Y: Press ALL button in zone OUTPUT → Press INPUT-Y button (Y means 1 to 4 of inputs), then INPUT-Y switched to ALL OUTPUTS

C. Mirror all inputs and outputs (Ex. Input 1 to output 1, input 2 to output 2, etc): Press PTP button in Zone OUTPUT

EDID Set Up

A. Fixed EDID to INPUT-Y/ALL

Press 1080I/1080P/3D/4K → Press 2.0CH/5.1CH/7.1CH → INPUT-Y/ALL button in Zone INPUT

B. Copy EDID of OUTPUT-X to INPUT-Y/ALL

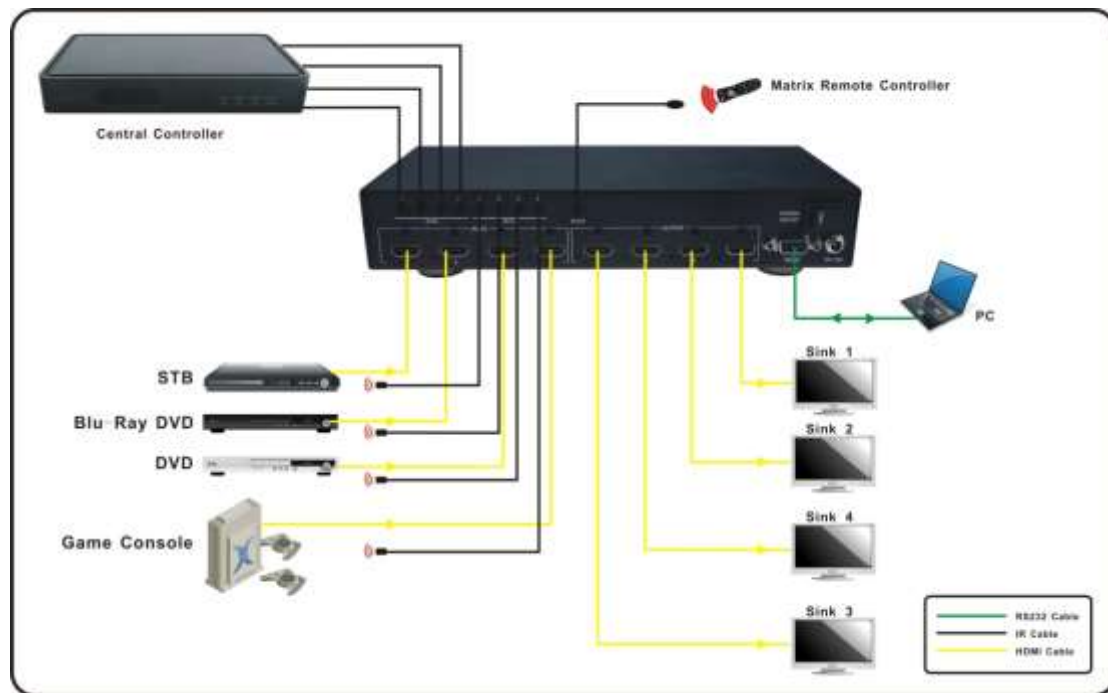
Press COPY button → Press OUTPUT-X button → Press INPUT-Y/ALL button

C. User defined EDID to INPUT-Y/ALL

Press USER1/USER2 button → Press INPUT-Y/ALL

NOTE: Pressing button sequence should be finished in 5 seconds, otherwise, operation discarded.

Application Diagram



Specifications:

Bandwidth:	2.97Gbps per color
Video Input Connectors:	4x HDMI Type A, 19-pin, female, locking
Video Output Connectors:	4x HDMI Type A, 19-pin, female, locking
RS-232 serial port:	DB-9, female
IR Input ports:	5x 3.5mm stereo jack
IR Output ports:	4x 3.5mm stereo jack
Rack-Mountable:	Rack ears included
Dimensions (W x H x D):	256mm x 114mm x 43mm , without feet
Shipping Weight:	1.0kg
Operating Temperature:	32°F to 104°F (0°C to 40°C)
Storage Temperature :	-4°F to 140°F (-20°C to 60°C)
Power Supply:	12V/2A DC

Package Contents:

1. 1x MX44UHD
2. 1x 12V DC power supply
3. 1x Remote control
4. 4x IR Transmitter,
5. 5x IR Receiver.
6. 1x mounting kit.

RS-232 Pin Assignment

MX44UHD			Remote Control Console	
PIN	Assignment		PIN	Assignment
1	NC		1	NC
2	Tx		2	Rx
3	Rx		3	Tx
4	NC		4	NC
5	GND		5	GND
6	NC		6	NC
7	NC		7	NC
8	NC		8	NC
9	NC		9	NC

Baud Rate: 57600 bps

Data Bit: 8-bit

Parity: None

Stop Bit: 1-bit

Flow Control: None

DIP for EDID Setting

[DIP]=0000: HDMI 1080p@60Hz, Audio 2CH PCM

[DIP]=0001: HDMI 1080p@60Hz, Audio 5.1CH PCM/DTS/DOLBY

[DIP]=0010: HDMI 1080p@60Hz, Audio 7.1CH PCM/DTS/DOLBY/HD

[DIP]=0011: HDMI 1080i@60Hz, Audio 2CH PCM

[DIP]=0100: HDMI 1080i@60Hz, Audio 5.1CH PCM/DTS/DOLBY

[DIP]=0101: HDMI 1080i@60Hz, Audio 7.1CH PCM/DTS/DOLBY/HD

[DIP]=0110: HDMI 1080p@60Hz/3D, Audio 2CH PCM

[DIP]=0111: HDMI 1080p@60Hz/3D, Audio 5.1CH PCM/DTS/DOLBY

[DIP]=1000: HDMI 1080p@60Hz/3D, Audio 7.1CH PCM/DTS/DOLBY/HD

[DIP]=1001: HDMI 4K2K, Audio 2CH PCM

[DIP]=1010: HDMI 4K2K, Audio 5.1CH PCM/DTS/DOLBY

[DIP]=1011: HDMI 4K2K, Audio 7.1CH PCM/DTS/DOLBY/HD

[DIP]=1100: DVI 1280x1024@60Hz, Audio None

[DIP]=1101: DVI 1920x1080@60Hz, Audio None

[DIP]=1110: DVI 1920x1200@60Hz, Audio None

NOTE1: The port will only read the DIP switch settings on power-up. The device must be powered off and then back on again for it to implement any change of the DIP switch settings.

GUI Control

PC System: Microsoft Windows Operation System

Installation

4x4 HDMI Matrix controller is a green software. You just need to copy “4x4 HDMI Matrix Controller vx.x.exe” to the PC which is used to control the Matrix by RS232 COM or TCP to complete installation.

Preparation

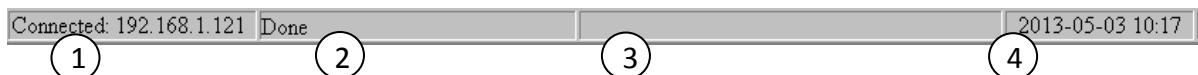
1. Connect PC and Matrix by RS232 cable
2. Power up Matrix (It will take about 5 seconds to be ready with “Di” beep sound)
3. Double click “4x4 HDMI Matrix Controller vx.x.exe” icon to run it

How to control Matrix

Common information

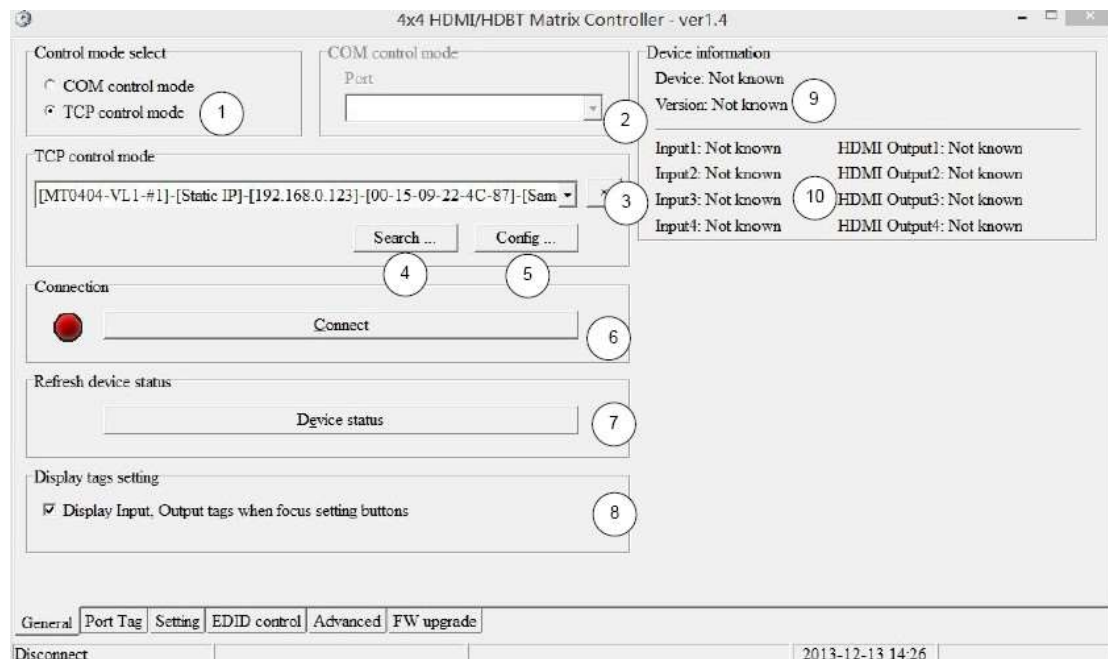


Click to select tab page



- ① COM port or TCP connect status
- ② Control command process status
- ③ Prompt message display area
- ④ Date and Time display

“General” page



- ① Select control mode: RS232 COM mode (Auto COM ports detected)
- ② List detected COM ports
- ③ List all Matrix devices after search operation
- ④ Click to search all Matrix devices that connected in same subnet
- ⑤ Click to configuration the selected Matrix's TCP control configurations if available.
- ⑥ Click to connect or disconnect PC and Matrix (Connection will be established automatically before control commands sending)
- ⑦ Click to refresh device status: include device information displayed in ⑨ area and Input/output port connection status in ⑩ area.

NOTE: Tab pages cannot be changed during control command is processing.

- ⑧ To enable or disable Input/output tags displaying when setting buttons on “Setting” page focused
- ⑨ Device information display area
- ⑩ Input/output port connection status

“Port Tag” page

4x4 HDMI/HDBT Matrix Controller - ver1.4

Input port tags

Tag of Input1: SONY DVD

Tag of Input2: SAMSUNG DVD

Tag of Input3: PS3

Tag of Input4: XBOX 360

Output port tags

Tag of Output1: LG TV

Tag of Output2: SONY TV

Tag of Output3: SAMSUNG TV

Tag of Output4: PANASONIC TV

General Port Tag Setting EDID control Advanced FW upgrade

Disconnect Modify TCP configuration cancelled 2013-12-13 14:28

- ① Input port tags
- ② Click to edit Input port tags
- ③ Output port tags
- ④ Click to edit Output port tags

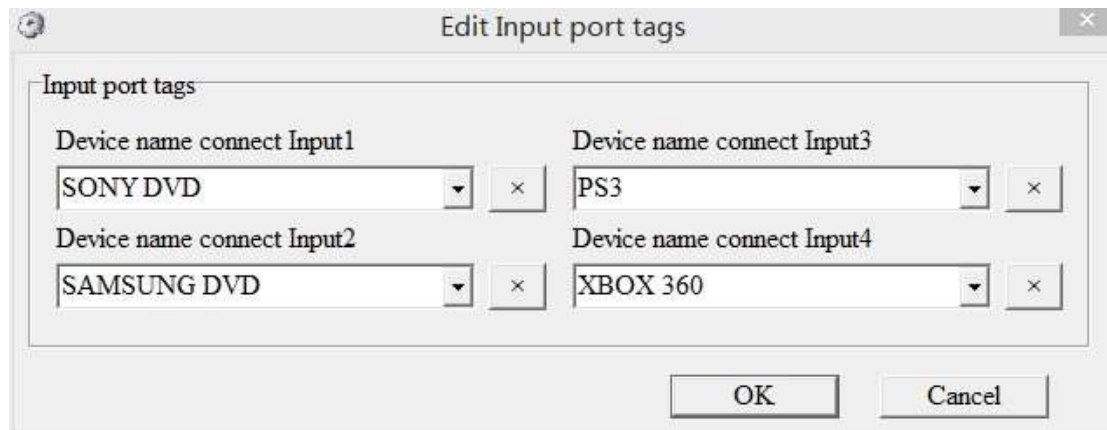
NOTE: Edit boxes are read only, click “Edit” button to pop up window to edit the tags.

One set of Input/output port tags can be set for Matrix device when COM control mode selected.

Input/output port tags can be set for respective Matrix device according to device’s MAC address.

Edit Input port tags

After action of ②, edit form will pop-up as below:

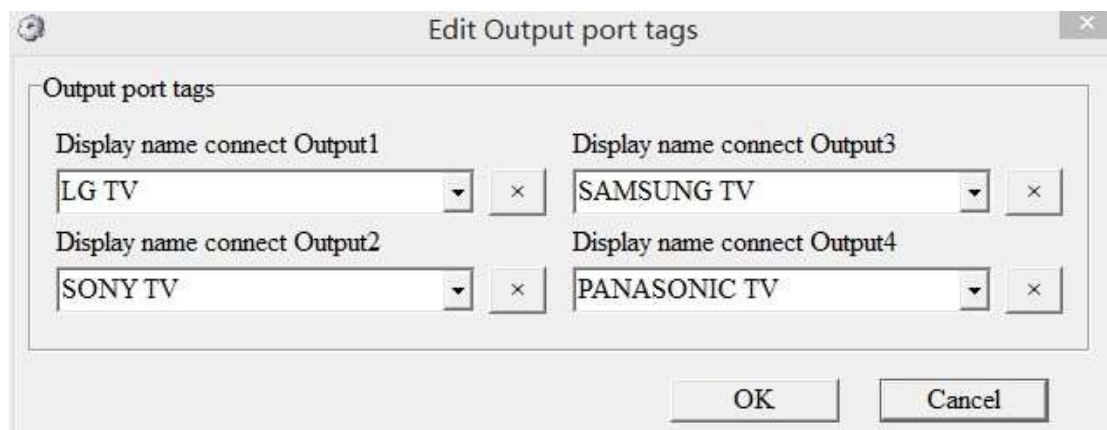


Define tags for respective Input port, then devices connect the Input ports can be easily remembered.

Click buttons with “x” caption to delete tag which is no use any more, if tag is still used by any other Input port, delete action will be discarded.

Edit Output port tags

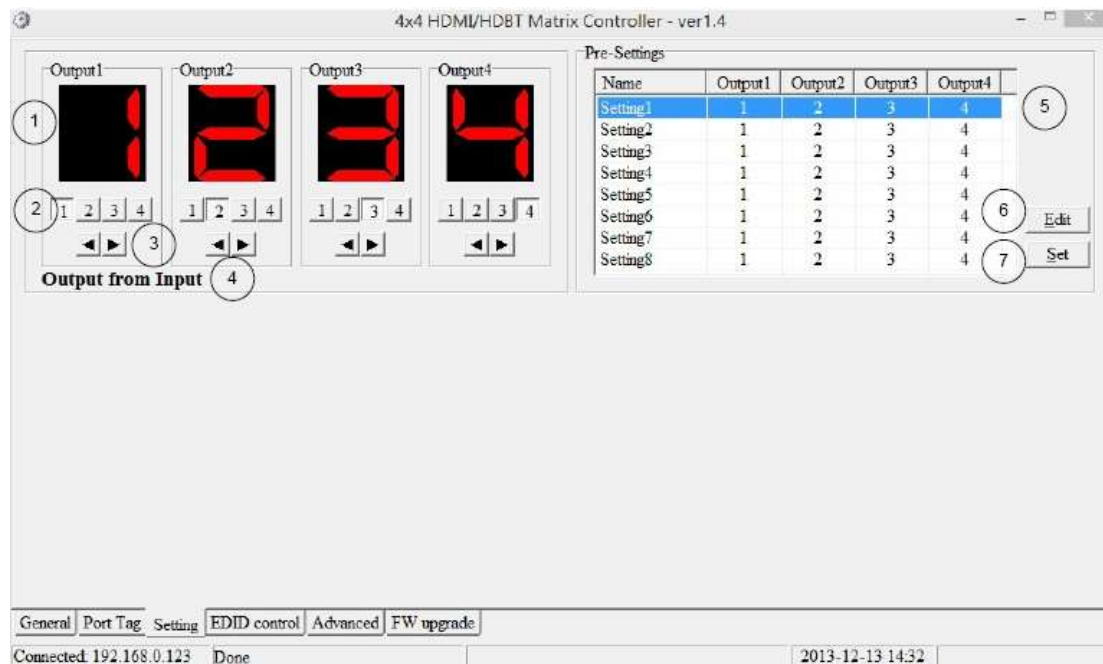
After action of ④, edit form will pop-up as below:



Define tags for respective Output port, then displays connect the Output ports can be easily remembered.

Click buttons with “x” caption to delete tag which is no use any more, if tag is still used by any other Output port, delete action will be discarded.

“Setting” page

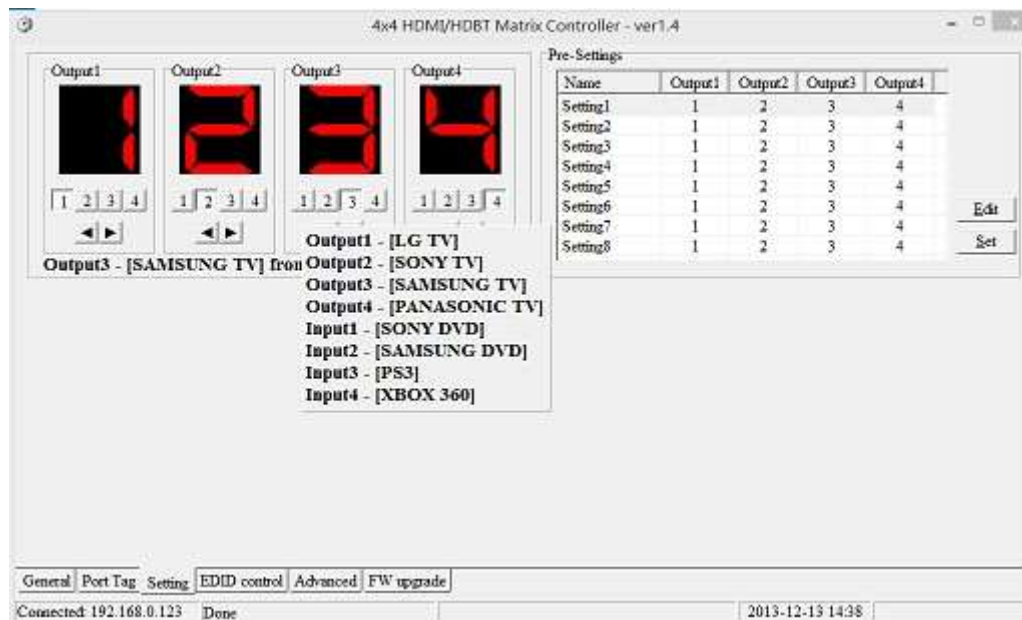


- ① LED which displays Input number for respective Output port
- ② Click to select Input port for respective Output port
- ③ Click to select previous or next Input port for respective Output port
- ④ Display Output from Input with tag information when mouse moves over ② buttons
- ⑤ Pre-Setting items: Default is Port to Port
- ⑥ Click to edit selected pre-setting item
- ⑦ Set selected pre-setting item to Matrix

NOTE: When Change to this “Setting” page, software will try to refresh source selection status of Output port.

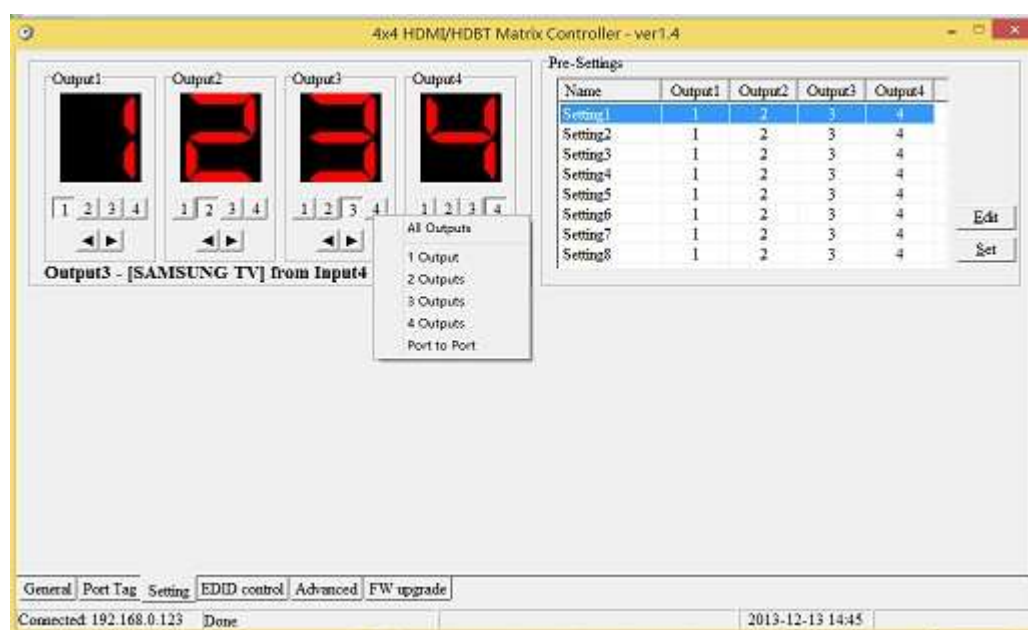
Pop-up tag messages

When “Display Input, Output tags when focus setting buttons” checkbox on “General” page is checked and Input/output port tag has been defined, tag messages will pop up like as:



Pop-up Menu

When mouse moves over **2** setting buttons, and click mouse right button, menu will pop up like as:



All Outputs: All Outputs from same Input

“1 Output” to “4 Outputs”: Set current Output (where mouse right clicked) and the next x-1 (x range is from 1 to 4, set total x Outputs at the same time) Output(s) from same Input

Port to Port: Output1 from Input1, Output2 from Input2, Output3 from Input3, etc.

Edit selected pre-setting item

After action of ⑥, edit form will pop-up as below:

Output setting

Setting name ①

Setting1

All Outputs from ②

Select Input

Out1 - [LG TV] from ③

In1 - [SONY DVD]

Out2 - [SONY TV] from

In2 - [SAMSUNG DVD]

Out3 - [SAMSUNG TV] from

In3 - [PS3]

Out4 - [PANASONIC TV] from

In4 - [XBOX 360]

OK Cancel

- ① Pre-Setting name
- ② Set all Output ports from same Input
- ③ Select Input for respective Output

“EDID control” page

- ① Set EDID mode for selected Input port or All Input ports, click “Set” button to complete action.

NOTE: When set User1/User2 EDID mode, should Download EDID content to User1 Memory/User2 Memory first. User1/User2 default EDID content is 1080p, Stereo Audio 2.0.

- ② Copy EDID from Output port to selected Input port or All Input ports, click “Copy” button to complete action.
- ③ Read EDID content from Output port and display in grid, click “Read” button to complete action.
- ④ Save EDID content which displayed in grid to binary file (file extension is “.bin”)
- ⑤ Open EDID binary file and display in grid
- ⑥ Download EDID content which displayed in grid to selected Input port or All Input ports, click “Download” button to complete action. When User1 Memory/User2 Memory selected, download EDID content to respective memory then User1/User2 EDID mode can be set.
- ⑦ EDID content displaying grid

NOTE: EDID content displayed in grid is read only.

- ⑧ Click to clear EDID content displayed in grid

“IR Configuration” page

4x4 HDMI/HDBT Matrix Controller - ver1.4

IR control enable/disable setting

☒ Enable IR control

TCP Module information

Version:

DHCP:

IP Address:

Query

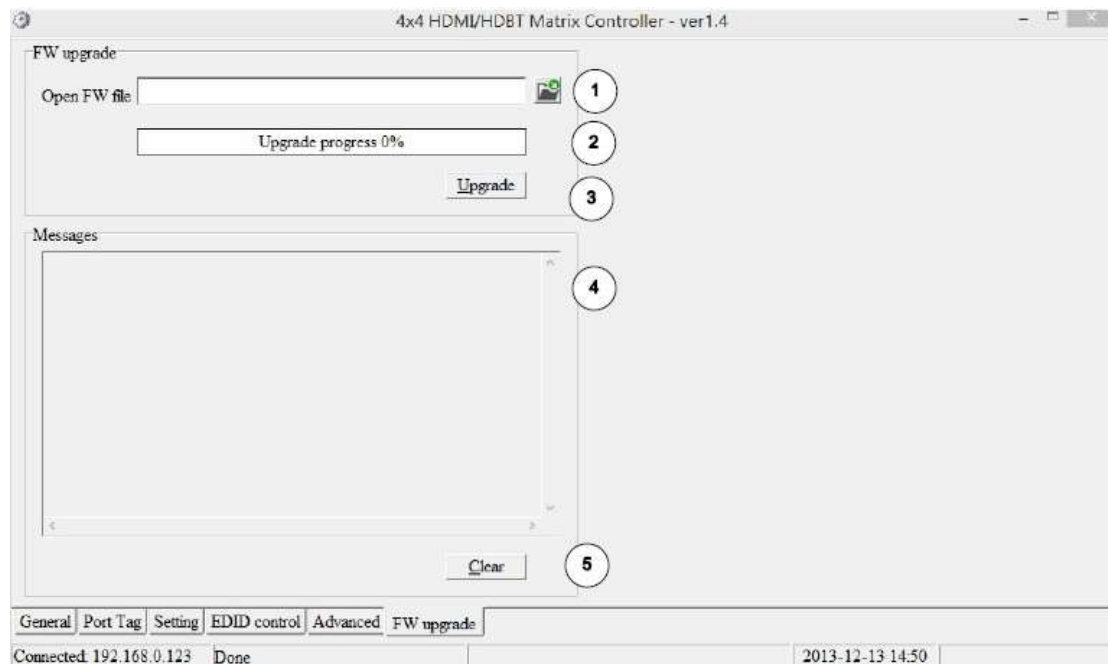
Reset TCP Module

Reset

General Port Tag Setting EDID control Advanced FW upgrade

Connected: 192.168.0.123 Done 2013-12-13 14:49

To enable or disable IR control function. When box checked, IR control function enabled, otherwise, IR control function disabled. This setting is not memorized. IR control function is always enabled after power up.

“FW upgrade” page

- ① Click to open firmware file (file extension is “.fw”).
- ② Firmware upgrade progress
- ③ Click the button to upgrade firmware.

NOTE: If failure occurs during upgrading firmware process, the following steps SHOULD be done sequentially to establish next upgrading procedure:

1. Power down the Matrix
2. Close the 4x4 HDMI Matrix Controller
3. Re-power up the Matrix, then wait for 10 seconds to ensure the Matrix is ready
4. Run 4x4 HDMI Matrix Controller, open firmware file and upgrade again

- ④ Firmware upgrading messages display
- ⑤ Click to clear the messages displayed in the memo box.

Maintenance

Clean this unit with a soft, dry cloth. Never use alcohol, paint thinner or benzene to clean this unit.

Exclusive Remedies

HCS warranty, as stated is in lieu of all other warranties, expressed, implied, or statutory, including those of merchantability and fitness for a particular purpose. The buyer shall pass on to any purchaser, lessee, or other user of HCS products, the aforementioned warranty, and shall indemnify and hold harmless HCS from any claims or liability of such purchaser, lessee, or user based upon allegations that the buyer, its agents, or employees have made additional warranties or representations as to product preference or use.

The remedies provided herein are the buyer's sole and exclusive remedies. HCS shall not be liable for any direct, indirect, special, incidental, or consequential damages, whether based on contract, tort, or any other legal theory.