


DK-504 Desk INSTALLATION MANUAL

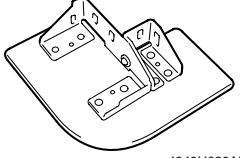
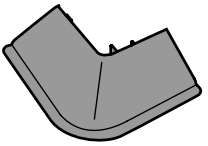
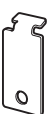





Applied Machines: C353/C253/C203/C353P
 COLOR MFP (Color/B&W): 35 ppm / 35 ppm, 25 ppm / 25 ppm, 20 ppm / 20 ppm
 COLOR PRT (Color/B&W): 35 ppm / 35 ppm
 Product Code: A02E

Note:

Lifting the machine in an awkward position or transporting it in a poorly balanced position could result in personal injury. When transporting the machine, assign an adequate number of persons to the job and ensure that each person can take a good position of not being excessively loaded (mass: approx. 20 kg (44 lb)).

No.	Name	Shape	Q'ty
9.	Installation manual	 4980IXC019DA	1 set

I. Accessory parts

No.	Name	Shape	Q'ty
1.	Fixing leg	 4348U020AB	4
2.	Fixing leg cover	 4348U099AB	4
3.	Fixing bracket A	 4658U021AA	2
4.	Fixing bracket B	 A093IXC003DA	1
5.	Fixing bracket C	 A093IXC004DA	1
6.	Screw A (black) (4 × 8 mm)	 4038IXC033DA	4
7.	Screw B (black) (3 × 8 mm)	 4040IXC046DA	1
8.	Screw C (4 × 8 mm)	 4038IXC033DA	12

! WARNING

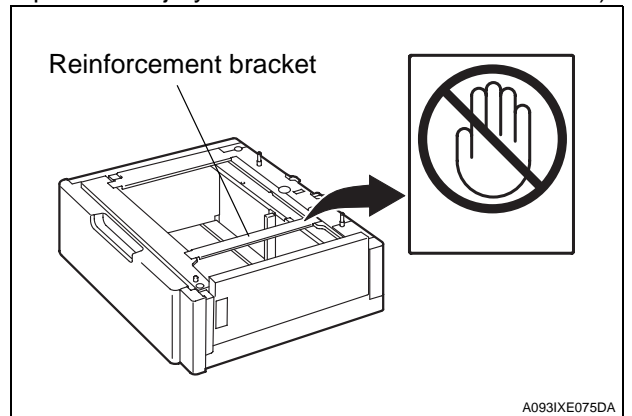


After unpacking, be sure to get rid of the packaging materials and keep them out of the reach of children.

Putting the head in the plastic bag involves danger of suffocation.

Note:

When removing the desk from its shipping carton, do not hold onto the reinforcement bracket (as a personal injury or a deformed frame could result).

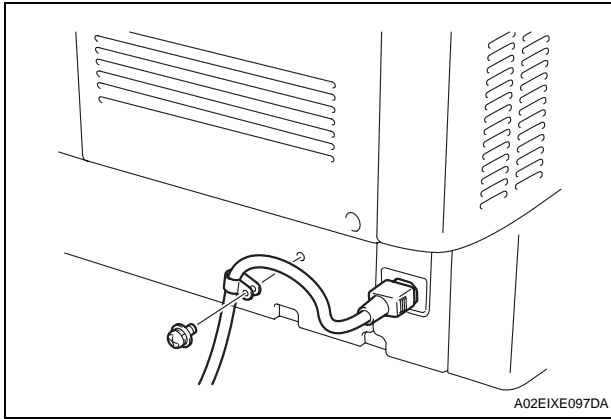


II. When installing to C353P

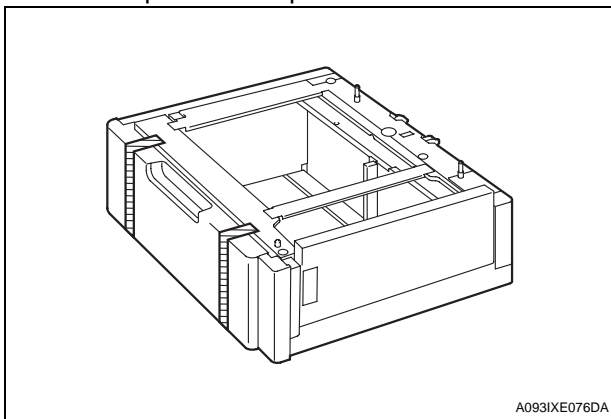
This manual provides the illustration of the machine used as MFP. However, the same installation procedure is used for C353P.

III. Installation procedures

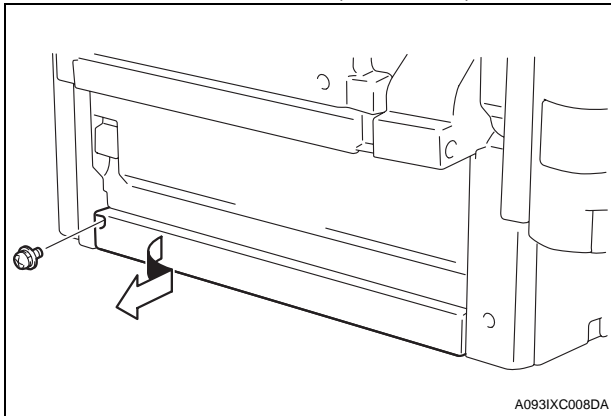
1. Turn off the machine.
2. Remove the cord clamp and unplug the power cord from the machine (one screw).



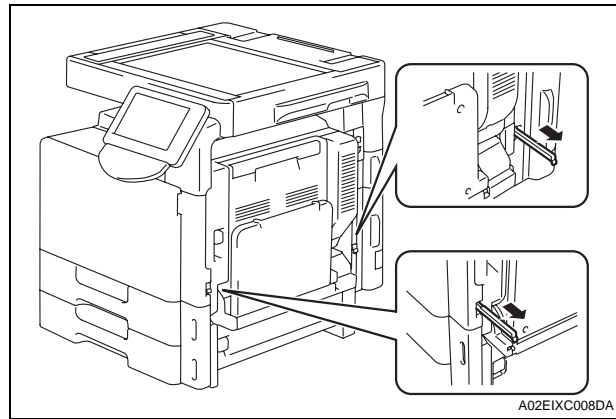
3. Remove protective tape from the desk.



4. If the cover is installed to the position shown in the illustration, remove it (one screw).



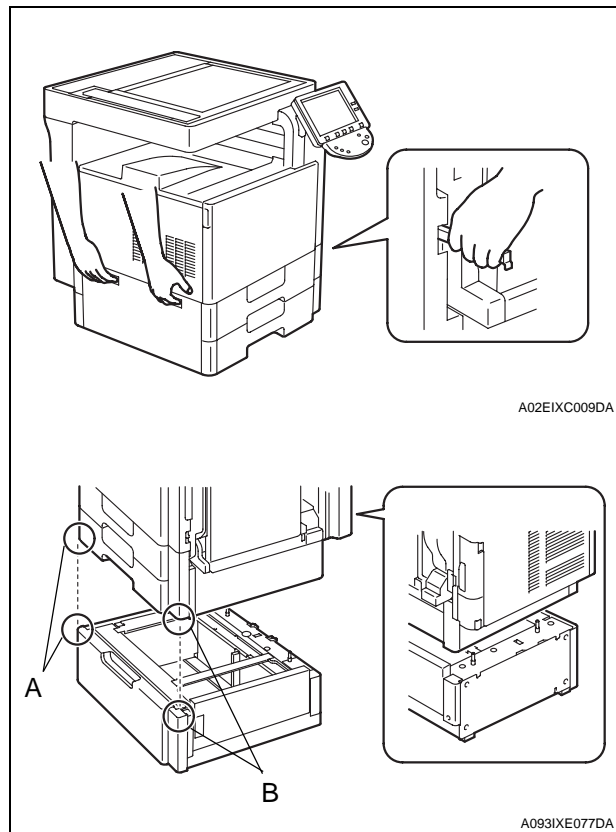
5. Pull out the handles.



6. Holding onto the transportation handles at the right and left of the machine, place the machine onto the desk. When placing the machine, use the positioning pin in the rear of the desk to align the machine correctly with the desk.

Note:

- Make available collective manpower of an appropriate size for transporting the machine.
- When attaching the machine, as the reference fit the machine with the corner A and B of the desk.



7. Secure the desk to the machine by the fixing bracket A (left) and the fixing bracket C (right).

Fixing bracket A :

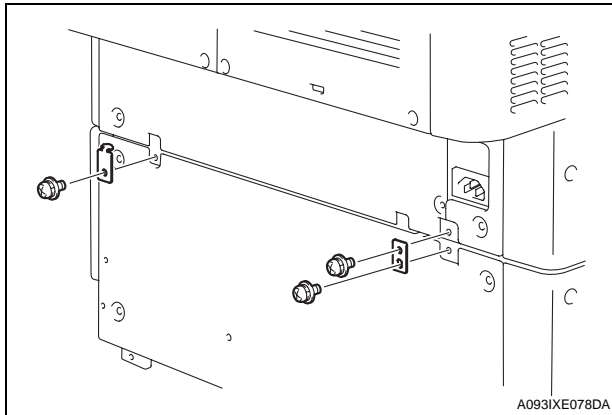
one screw A furnished with the desk.

Fixing bracket C :

two screw A's furnished with the desk.

Note:

The fixing bracket C can be placed upside down.



8. Slide out the second drawer from the paper feed cabinet and the drawer from the desk.

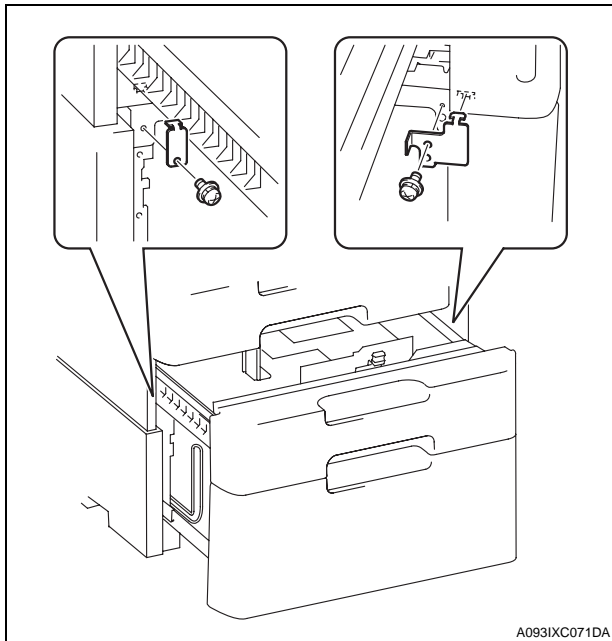
9. Secure the desk to the machine by the fixing bracket A (left) and the fixing bracket B (right).

Fixing bracket A :

one screw A furnished with the desk.

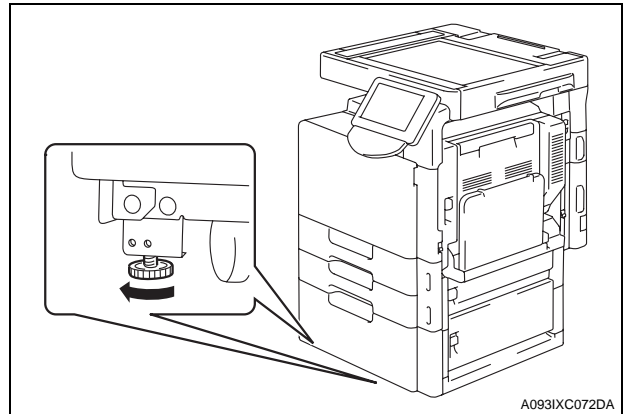
Fixing bracket B :

one screw B furnished with the desk.



10. Slide the drawers back into the paper feed cabinet and the desk.

11. Move the machine and desk to the installation site. Then, adjust the two adjusters at the front to let the desk sit on the floor.



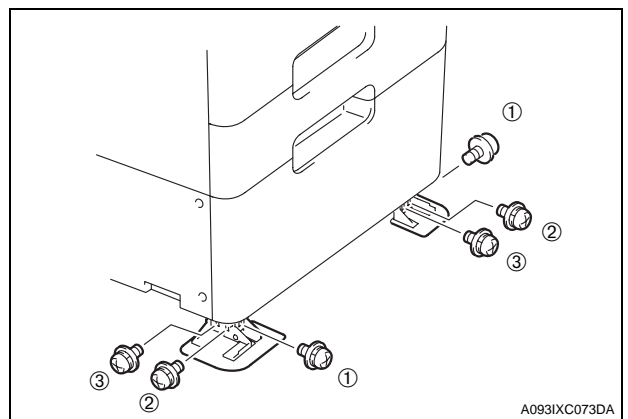
12. Install the Fixing Legs at two locations in the front shown in the illustration (six screw C's furnished with the desk).

Note:

When mounting the finisher at the same time, do not install the fixing leg or fixing leg cover at the left front side.

! CAUTION

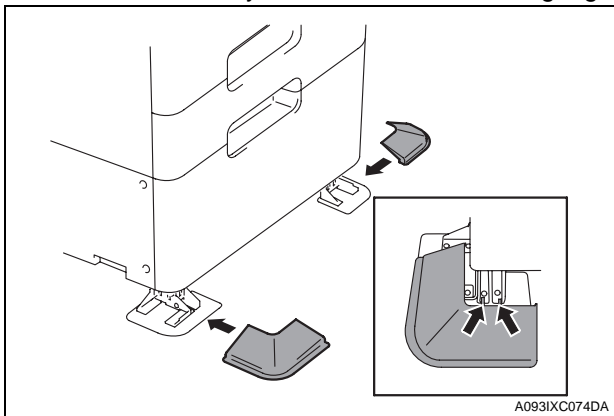
! To reduce the risk of injury due to unstable equipment, set stabilizers before use.



13. Install the fixing leg covers (two pieces) at two locations in the front shown in the illustration.

Note:

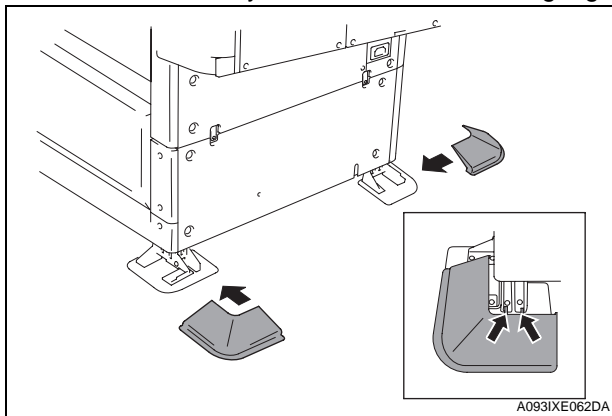
- Insert the fixing leg covers in the direction shown by arrow until they click into position.
- Insert the protruded portions of the fixing leg covers shown by the arrows into the fixing leg.



15. Install the fixing leg covers (two pieces) at two locations in the rear shown in the illustration.

Note:

- Insert the fixing leg covers in the direction shown by arrow until they click into position.
- Insert the protruded portions of the fixing leg covers shown by the arrows into the fixing leg.



14. Install the fixing legs at two locations in the rear shown in the illustration (six screw C's furnished with the desk).

CAUTION



To reduce the risk of injury due to unstable equipment, set stabilizers before use.

16. Plug the power cord into the machine and put the cord clamp that has been removed in step 2 through the power cord to install it (one screw).

