

**Sanako Study 500**

# **USER GUIDE**

Copyright © 2013 Sanako Corporation. All rights reserved.  
Microsoft is a registered trademark. Microsoft Windows XP, Windows Vista and Windows 7 are trademarks of Microsoft Corporation.

This document covers Sanako Study 500 v. 6.10

Document date 13.2.2013

1871700-13044



**Sanako Corporation**

Turku High Tech Centre  
Lemminkäisenkatu 46, 20520 Turku, Finland  
Tel: (0)20 7939 500, Fax: (0)22 363 440  
support@sanako.com, info@sanako.com, <http://www.sanako.com>

# CONTENTS

<b>Introduction</b>	<b>1</b>
Welcome.....	1
What can you do with Study 500 .....	1
<b>Getting started</b>	<b>3</b>
Study 500 system components .....	3
Study 500 Tutor .....	3
Study 500 Student .....	3
Study Server .....	3
Extension modules for Study 500 .....	3
<b>Study 500 Teacher application</b>	<b>5</b>
Overview .....	5
Sessions & Activities .....	5
Components of the Tutor interface .....	6
Communication .....	8
Functions.....	8
Getting Started .....	11
Starting Study 500 Tutor .....	11
Starting Study 500 Student .....	11
Adding students into the classroom .....	12
Getting help.....	13
Ending a lesson .....	13
Restarting the tutor application .....	13
Grouping students into sessions .....	14
Student icons .....	15
Class view .....	15
Student icons .....	15
Functions for a single student .....	17
Discuss.....	17
PC control .....	17
Remote control.....	17
Homework .....	18
Messages.....	18
Functions for entire class / a session.....	19
Talk .....	19
PC control .....	20
Screen control .....	20
Homework.....	23
OneNote.....	23
Web browser .....	24
Whiteboard.....	24
Messages.....	27
Chat.....	28
Feedback and Voting .....	30
Live feedback .....	30
Voting .....	31
Playlist.....	33

Copying files .....	35
File functions .....	35
Homework.....	37
Adding and removing homework files .....	38
Collecting homework .....	39
PC control options .....	42
Shut down operations.....	42
Switch on student PC .....	42
Locking options.....	43
Launch program .....	43
Show student application .....	44
Block applications.....	45
Disable Internet .....	47
Screen Control window.....	48
Monitor.....	48
Autoscan.....	48
Remote Control .....	48
Collaborate .....	48
Next / previous student screen .....	49
Web browser .....	50
Browser control buttons.....	50
To open Web browsers for students .....	51
Follow mode .....	52
Settings.....	53
Activities.....	54
General Procedure .....	54
Activity selection .....	54
Media source selection.....	54
Activity controls.....	55
Self-access .....	55
Tutoring .....	55
Web browsing.....	56
<b>Study 500 Student application</b> .....	<b>58</b>
Components of the Study 500 Student application .....	58
Menus .....	59
Media player .....	60
Chat .....	60
Volume adjustment.....	60
Status display .....	61
Getting Help.....	61
Media player .....	62
File functions .....	62
Track display .....	63
Homework.....	65
Accessing homework files .....	65
Handing in homework files .....	65
Chat .....	67
Call teacher / Send message .....	68
Web Browser .....	69
Teacher control.....	69
Locking .....	70
<b>Extension modules for Sanako Study 500</b> .....	<b>71</b>
Sanako Study Examination module .....	71
Sanako Study Video Live module .....	72
<b>Index</b> .....	<b>73</b>





# INTRODUCTION

## WELCOME...

... to Sanako Study 500, a software-based teaching solution that combines the use of multimedia with a suite of essential classroom management tools. Study 500 helps teachers deliver effective instruction in any subject area.

Since it is a pure software solution, Study 500 does not require any additional hardware and is therefore easy to install and maintain.

## WHAT CAN YOU DO WITH STUDY 500

The Study 500 multimedia teaching environment includes all the features and functions that are essential for effective and enjoyable teaching and learning, such as screen transfer features, audio and text communication tools, web browser and program launch capabilities, and classroom management and control features.

The basic platform of the Study 500 system can be easily upgraded and enhanced with separate extension modules, making it a flexible solution that can be modified to suit your specific teaching needs.





# GETTING STARTED

## STUDY 500 SYSTEM COMPONENTS

### STUDY 500 TUTOR

Teachers use the Study 500 Tutor application, which is the main interface to the Study 500 system. The Tutor application allows teachers to instruct with the Study 500 system and to control the classroom computers.

### STUDY 500 STUDENT

The Study 500 Student application is installed onto all student computers. Study 500 Student connects to Study Server at system startup and runs in the background listening for commands from Study 500 Tutor.

Students can open the student interface to work independently, however, teachers are able to control student computers, regardless of whether the Student application is visible on student screens.

### STUDY SERVER

Study Server application is the information center of the Sanako Study 500 system and both the Tutor and Student components automatically connect to it. All system data is passed through the Server and it allows communication between the Tutor and Student components.

## EXTENSION MODULES FOR STUDY 500

The functionality of the Study 500 system can be extended to suit more specific needs and tasks with additional modules. The available extension modules for Study 500 include:

- Sanako Study Examination Module

- Sanako Study Video Live Module

You can find descriptions and more information on each extension module in the *Extension modules for Sanako Study 500* section at the end of this User Guide.

# STUDY 500 TEACHER APPLICATION

## OVERVIEW

### **SESSIONS & ACTIVITIES**

Sessions and activities are two key concepts that form the basis of teaching with the Study 500 application

#### ***SESSIONS***

In Study 500, students can be divided into six different sessions that can be controlled separately and that can simultaneously perform different activities.

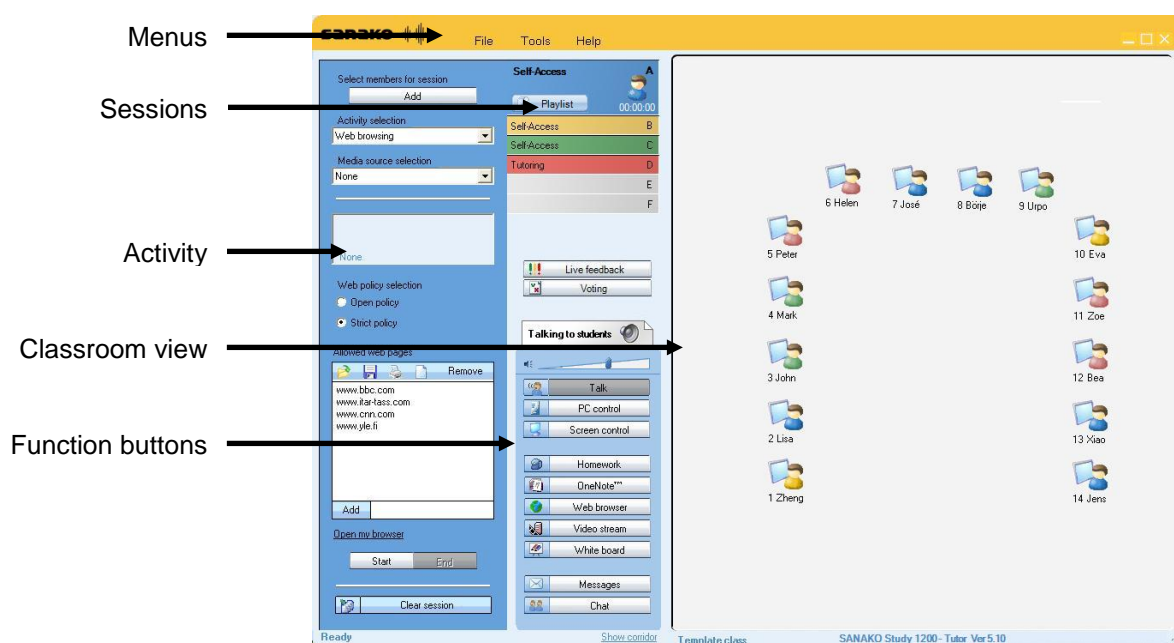
#### ***ACTIVITIES***

Teaching in the Study 500 environment is based on a set of preset learning activities, which can be utilized in the basic teaching of any subject. You can set different activities for different sessions.

The Study 500 program includes the following activities:

- Self-Access
- Tutoring
- Web Browsing

# COMPONENTS OF THE TUTOR INTERFACE

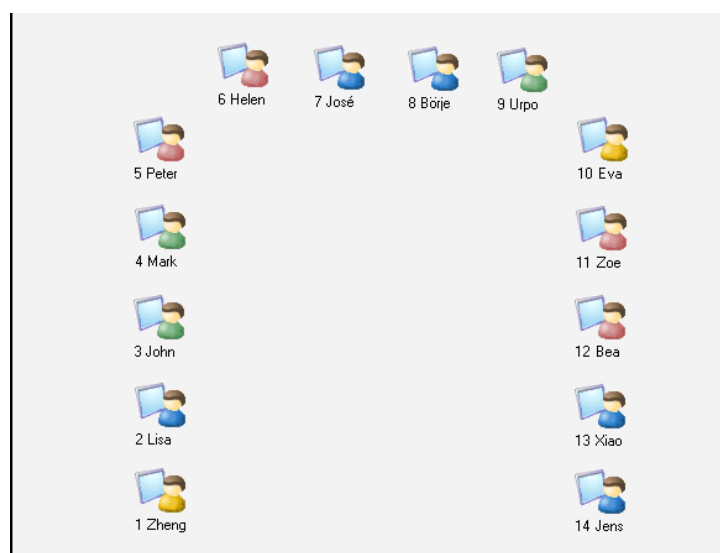


## MENUS

File Tools Help

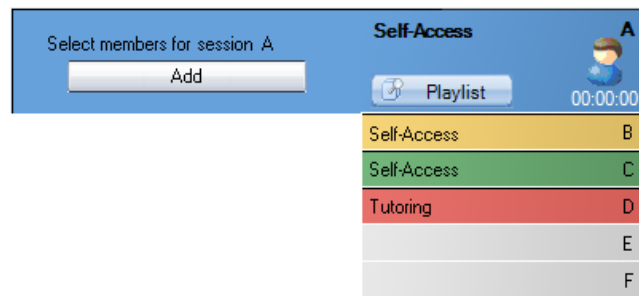
The three menus (**File**, **Tools** and **Help**) give you access to settings and preferences, to your license information, and to online help.

## CLASSROOM VIEW



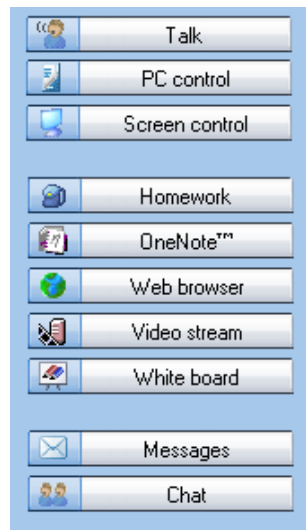
You can edit the classroom view by adding and removing student workstations and by arranging them to match your physical classroom environment. Student icons are color-coded according to the sessions they are in.

## SESSIONS



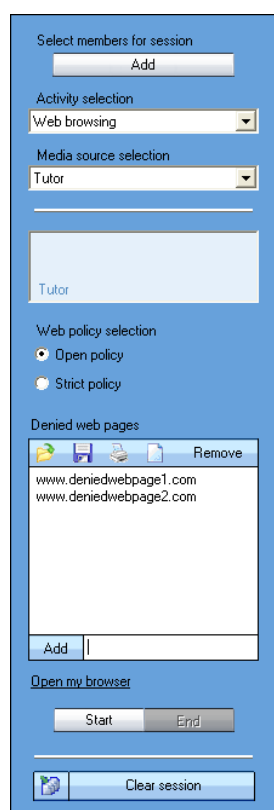
Study 500 has six different sessions that students can be placed into. The sessions allow you to divide your class into smaller groups that can be engaged in different learning activities. Empty sessions are grayed.

## FUNCTION BUTTONS



The different functions can be used for either all the students or the students of a single session.

## ACTIVITY VIEW

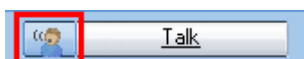


The activity view is where you can select and control the activity of the current session.

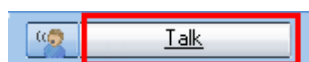
## COMMUNICATION

**To discuss with a single student**, click a student icon and select **Discuss**.

**To talk to a session**, select a session and in the Function Buttons click the icon next to the **Talk** button.



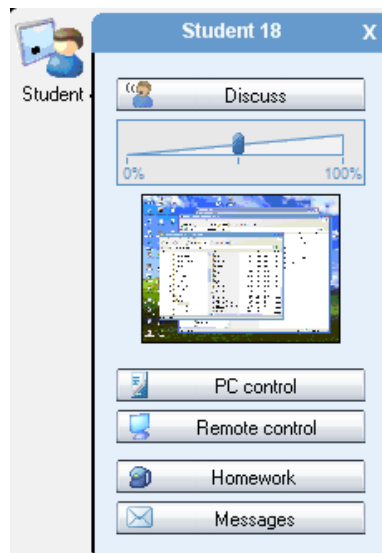
**To talk to the entire class**, click on **Talk** in the Function Buttons.



## FUNCTIONS

### FUNCTIONS FOR A SINGLE STUDENT

To use the different functions for a single student, click on the student icon. This opens a student monitoring window with functions that apply to the selected student.

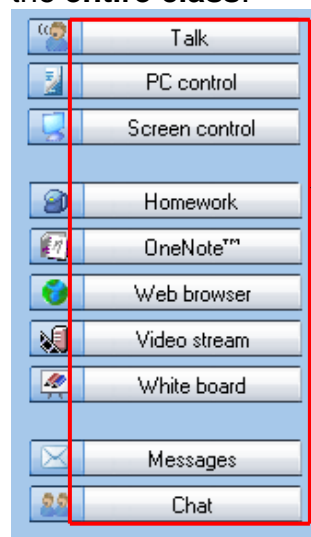


For more information on the different functions in the monitoring window, see *Functions for a single student* later in this guide.

### **FUNCTIONS FOR ENTIRE CLASS / A SESSION**

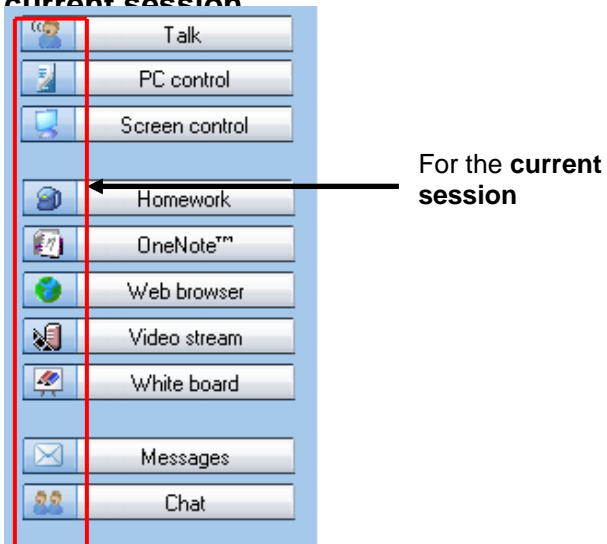
The functions in the function buttons can be used for the currently selected session or for the entire class.

- Clicking the button itself will perform the function for the **entire class**.



For the **entire class**

- Clicking the icons will perform the function for the **current session**



For more information on the different function buttons, see *Functions for entire class / a session* later in this guide.



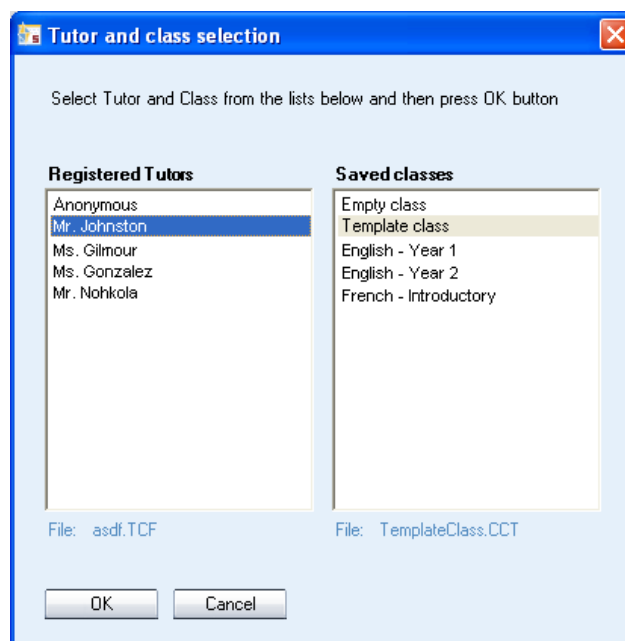
# GETTING STARTED

## STARTING STUDY 500 TUTOR

After the installation, you are ready to start Study 500. To start Study 500 Tutor, open the Windows **Start** menu (lower left corner on your screen) and select **Programs – Sanako – Study 500 – Tutor**.

### SELECTING TUTOR NAME AND CLASS

Before the Tutor application opens, you need to select your tutor name and the class that you are teaching. If you are not teaching a specific class, you can select the template class or an empty class and then manually pick the students you want to include in the class.



For information on adding students to the classroom, see the *Adding students into the classroom* section below.

For information on setting tutor names and classes, see the Sanako Study Technical Guide.

## STARTING STUDY 500 STUDENT

To open the Study 500 Student interface, click the Windows Start menu and select **Programs – Sanako – Study Student – Student**. The teacher can also at any time display the Student applications on student workstations by clicking the **PC Control** button on the Tutor interface and selecting **Show student application**.

Even if the Study 500 Student application is not open on the student screen, it is always running in the background

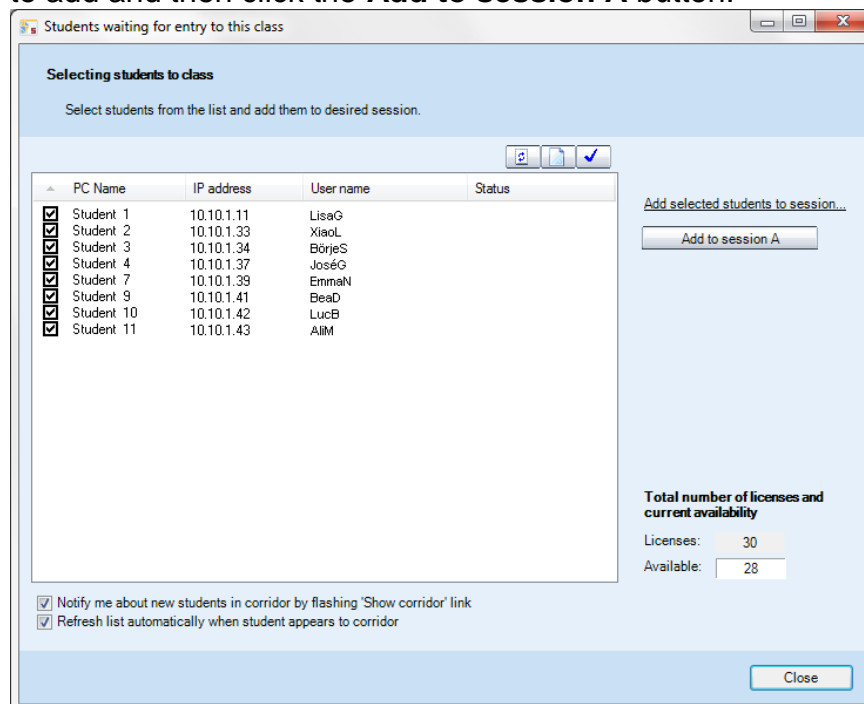
listening to commands from Study 500 Tutor when the student workstation is on.

## ADDING STUDENTS INTO THE CLASSROOM

To add students into the classroom, click the **Show Corridor** text at the bottom of the Tutor interface.



This opens a window that displays all the currently running student workstations. Select the workstations that you want to add and then click the **Add to session A** button.



## MOVING AND ARRANGING THE STUDENT ICONS

To move and arrange the student icons on the classroom view, open the **Tools** menu, select **Admin** and then **Move and align student icons**. This opens a control bar with functions for arranging the classroom layout.

## EDITING STUDENT NAMES AND NUMBERS

To edit the student names and numbers, right-click on a student icon and select **Edit** and then either **Name** or **Position**.

You can also let the students enter a name for themselves. To do this open the **Tools** menu and select **Ask student names**.

## **REMOVING STUDENTS**

To move a student from the class back to the corridor, right-click a student icon and select **Send to corridor**. The student can then be selected to another class by another teacher.

To remove a student and the student icon from the class view, right-click a student icon and select **Exclude from class (and layout)**. Once the student icon is removed, the classroom configuration can be saved as a new class.

## **GETTING HELP**

If you are unsure of some of the functions in the applications, you can access the Study 500 online Help file and view video tutorials in either the Teacher or Student application by opening the **Help** menu and selecting **Help** or **Video Tutorials**.

## **ENDING A LESSON**

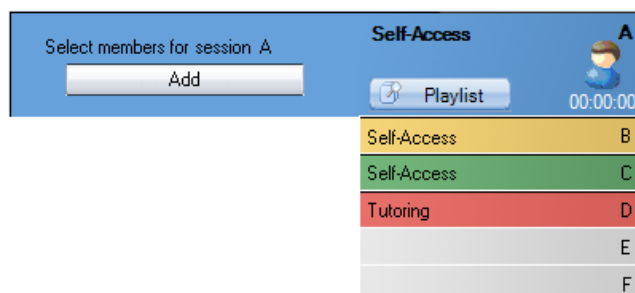
To end the current lesson and close Study 500 Tutor, open the **File** menu and select **Exit** or click the 'X' button in the top right corner of the teacher application.

## **RESTARTING THE TUTOR APPLICATION**

To restart the tutor application, open the **File** menu, select **Restart** and then either the **Restart** option to start again with the same tutor and classroom, or the **Restart and select Tutor** option to start again with a different tutor and classroom.

# GROUPING STUDENTS INTO SESSIONS

You can place students into six different sessions (A-F). Empty sessions are grayed.



There are three ways to select students for a session:

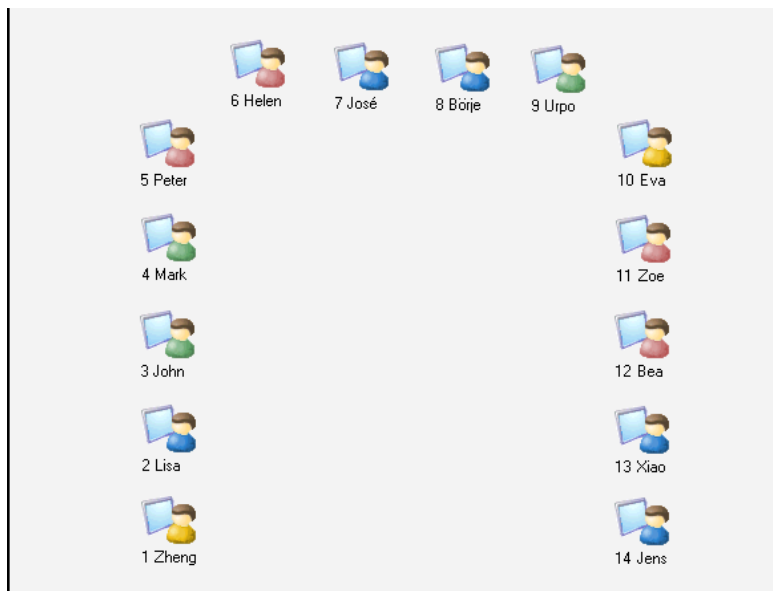
- Click **Add** and then the student icon you want to add.
- Click **Add**, and with the left mouse button pressed down drag the selector over the desired student icons.
- Right-click a student icon, select **Move to Session** and the letter of the session you want to place the student into.

You can remove students from a session by adding them into another one in one of the ways explained above.

# STUDENT ICONS

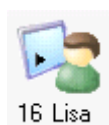
## CLASS VIEW

The Study 500 class view is a graphical layout of your class. Your students are displayed as student icons that reflect their current status.



The student icons are also color-coded according to the session they are in, allowing you to see at a glance, which session the students belong to.

## STUDENT ICONS



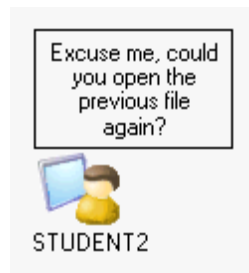
### Student name and position

Student names and student position numbers are indicated below each student icon. **To edit the name or position of a student**, right-click the icon, select **Edit** and either **Name** or **Position**.



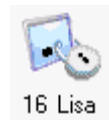
### Student calling teacher

A question mark on top of the student icon indicates that the student wants to speak with the teacher. To talk with the student, click the student icon and select **Discuss**.



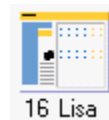
### **Message from student**

Messages from students are displayed above the student icons



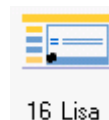
### **Locked student**

A locked student workstation (Lock PC, Lock Screen, or Lock Mouse and Keyboard).



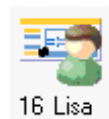
### **Student receiving tutor screen**

A student who receives the Tutor screen, when the Tutor screen is shared to students.



### **Student receiving model student's screen**

A student who receives the Model Student screen, when a student screen is shared to others.

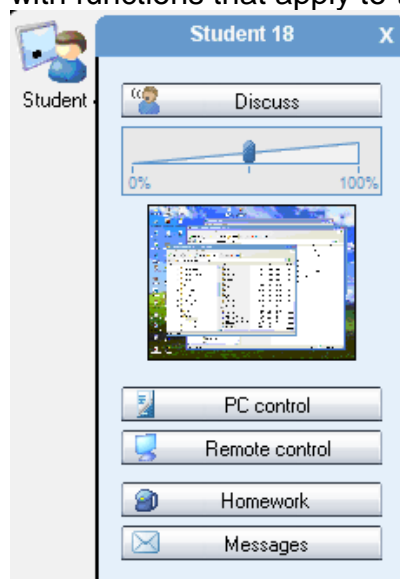


### **Model student**

A student whose screen is being shared to other students

# FUNCTIONS FOR A SINGLE STUDENT

Clicking a student icon opens a student monitoring window with functions that apply to the selected student.



## DISCUSS

Talk with the student. Adjust the student volume with the slider during the discussion.

### **SHARING TEACHER-STUDENT DISCUSSION**

You may also share a teacher-student discussion with others. To do this, first click **Talk** to address the whole class and then select a student and click **Discuss**.

## PC CONTROL

PC Control options include shut down functions, locking functions, the possibility to launch programs, selecting which applications students have access to, disabling Internet use and showing or hiding student applications on the student computer.

For information on the different PC Control options, see *PC control options* later in this guide.

## REMOTE CONTROL

View and control the selected student's screen in the Screen Control window.

For more information on the functions in the Screen Control window, see *Screen Control window* later in this guide.

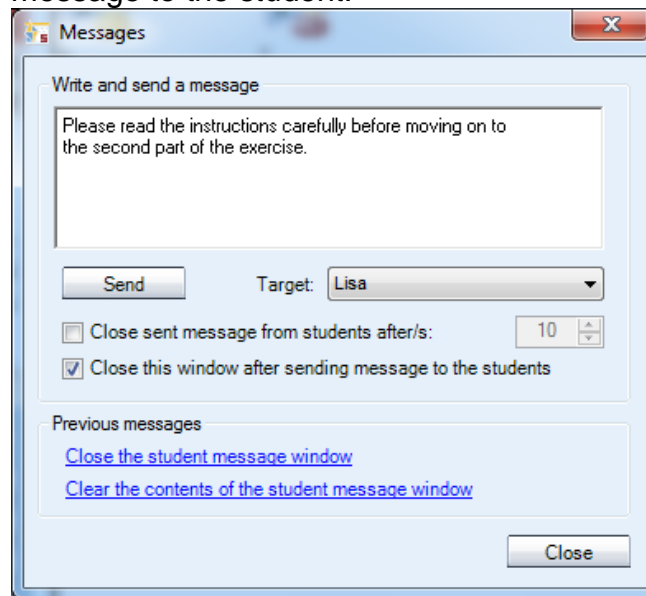
## HOMework

Distribute exercise files and material to students. Students can then work with the files and hand in their work once they are finished.

For more information on the Homework function, see *Homework* later in this guide.

## MESSAGES

Opens the message window in which you can send a message to the student.



### TO SEND A MESSAGE

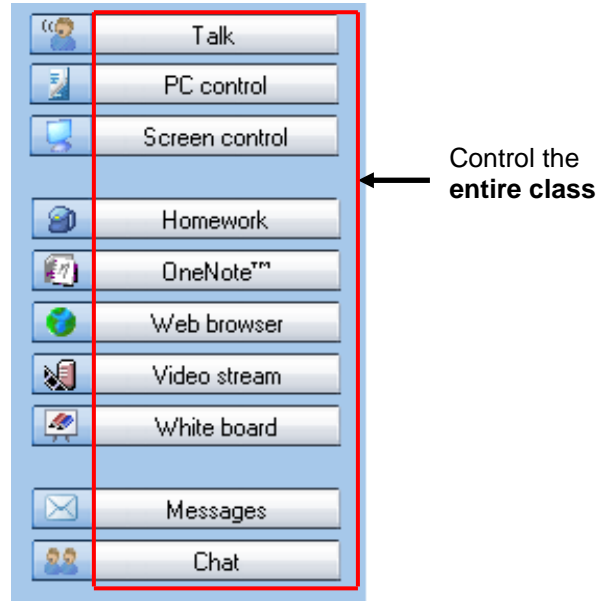
1. Type your message in the **Message text** field.
2. The current student is selected as the recipient by default.
3. Click **Send**. The message is now displayed on the student screen.



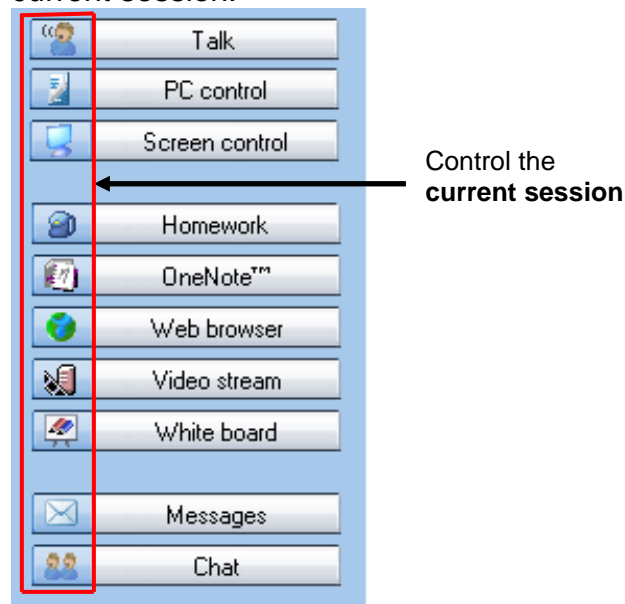
# FUNCTIONS FOR ENTIRE CLASS / A SESSION

The functions in the function buttons apply either to all students or to the currently selected session.

- Clicking the buttons will perform the function for the entire class.



- Clicking the icons will perform the function for the current session.



## TALK

**Talk** allows you to talk to students while the student microphones are muted. To end the call, simply click the **Talk** button again.

The **Talking to students** text above the Function buttons indicates when the students can hear you.

Talking to students

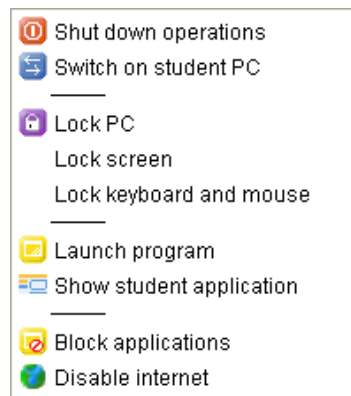


## SHARING TEACHER-STUDENT DISCUSSION

You may also use the talk function to share a teacher-student discussion with others. To do this, first click **Talk** to address the whole class and then select a student and click **Discuss**.

## PC CONTROL

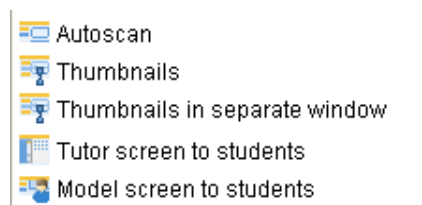
The different PC control options give you full control over the shutdown functions of student computers and also allow you to launch programs, select which applications students have access to, disable Internet use and show or hide student applications on student workstations. With the locking functions you can ensure that the students' full attention remains on the task at hand.



For more information on the different PC control options, see *PC control options* later in this guide.

## SCREEN CONTROL

The different screen control options allow you to monitor and control student screens, as well as to share either the teacher screen or a selected student's screen to others.



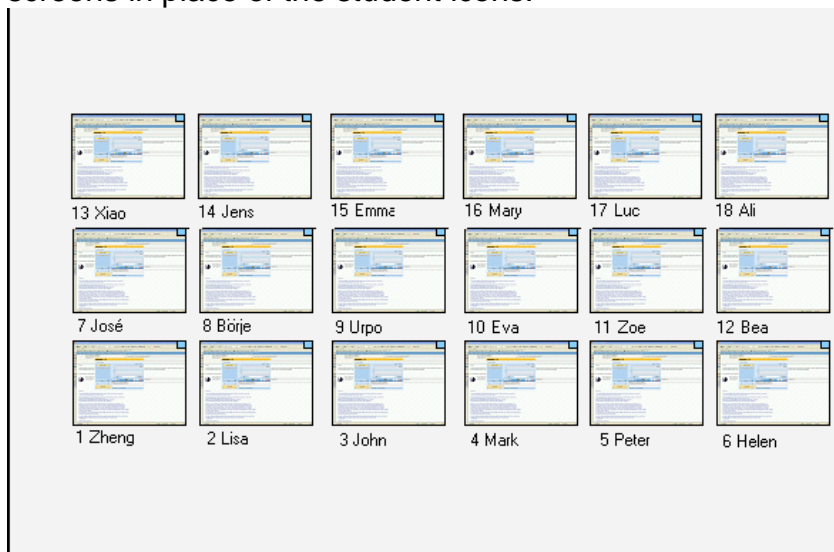
## AUTOSCAN

Opens the Screen Control window and allows you to monitor the screen activity of student workstations automatically, one after the other.

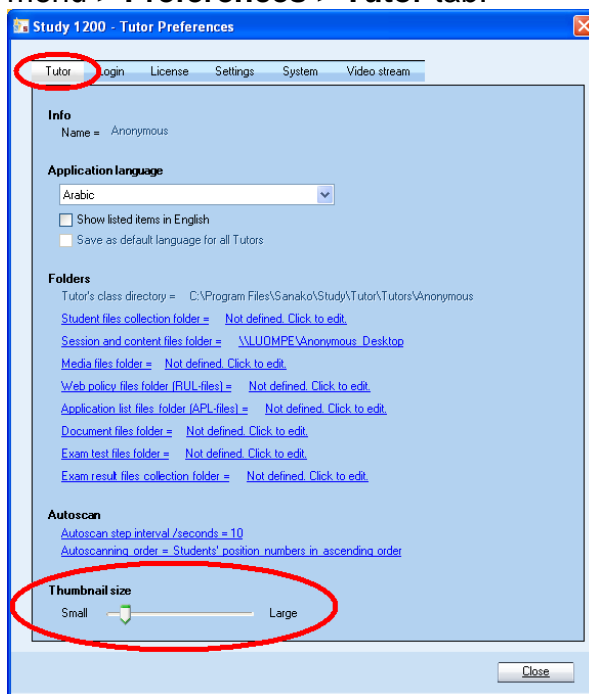
For more information on the functions in the Screen Control window, see *Screen Control window* later in this guide.

## THUMBNAILS

Selecting **Thumbnails** displays thumbnail images of student screens in place of the student icons.



You can adjust the size of the thumbnail images in **Tools** menu > **Preferences** > **Tutor** tab.



## THUMBNAILS IN SEPARATE WINDOW

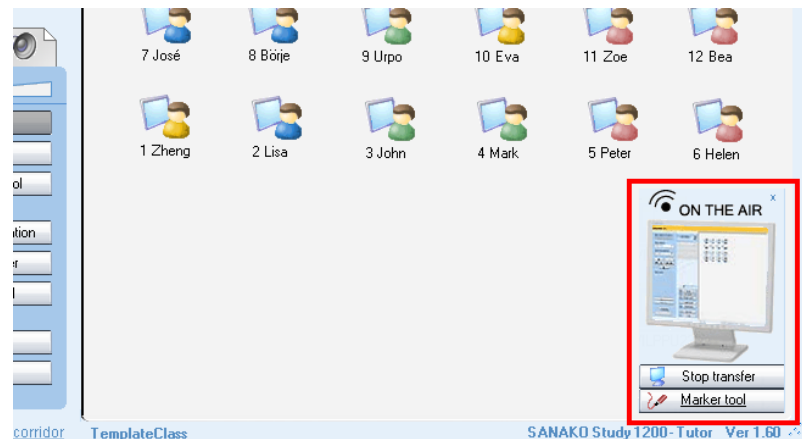
Selecting **Thumbnails in separate window** opens an additional window where the student thumbnails are displayed.

## TUTOR SCREEN TO STUDENTS

This allows the teacher to display the teacher screen on the student screens while talking to them. During the screen sharing, students will see the teacher screen but are not able to use their keyboard or mouse to control it.

### ON THE AIR

When the Tutor screen is shared to students an **On The Air** indication panel appears in the lower-right corner of the tutor screen

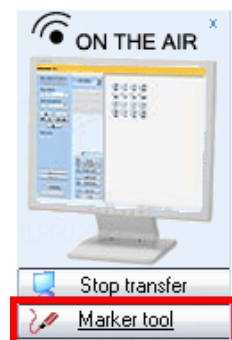


To end the screen transfer, click on the **Stop Transfer** button in the On The Air panel.

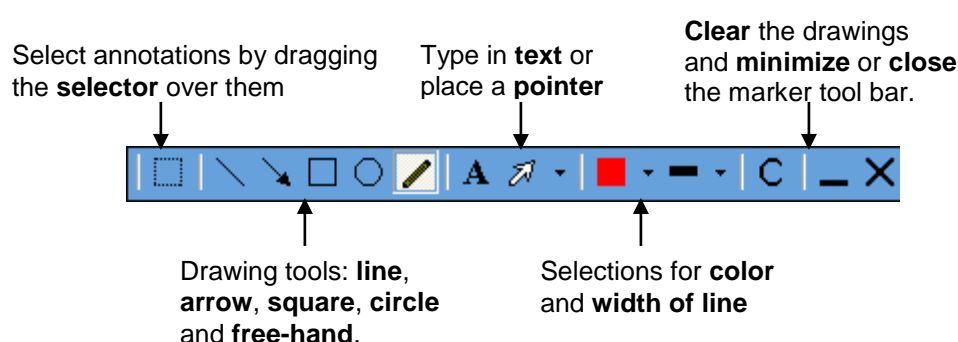
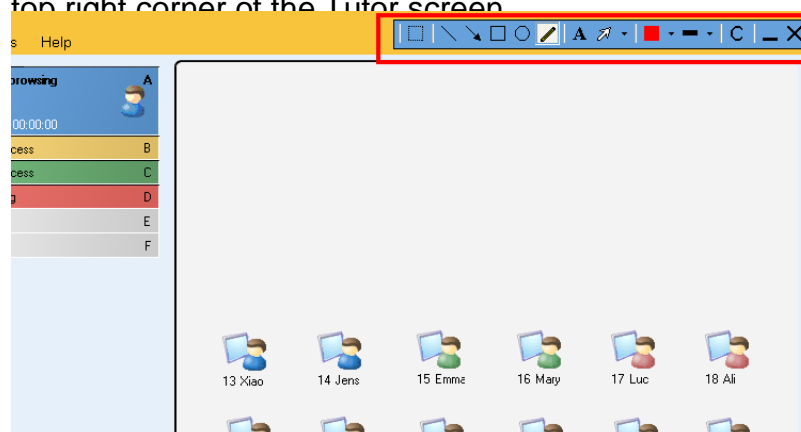


### MARKER TOOL

The marker tool allows instructors to make annotations onto the shared tutor screen. To use the Marker Tool, click on the **Marker Tool** button in the On The Air panel.



This will open a toolbar with different annotation tools into the top right corner of the Tutor screen



## MODEL SCREEN TO STUDENTS

This displays a selected student's screen to the other students and the model student can also talk to the others. Instead of teaching all the sessions yourself, you can use screen sharing to set one of the students to instruct the others or to let a student give a presentation.

**To set a model student**, select **Model screen to students** and then click on the desired student.

## HOMEWORK

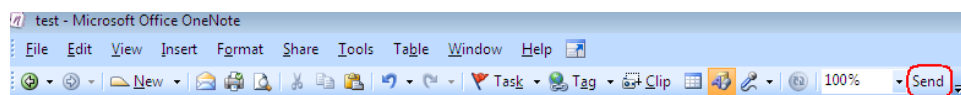
Distribute exercise files and material to students. Students can then work with the files and hand in their work once they are finished.

For more information on the Homework function, see *Homework* later in this guide.

## ONENOTE

Microsoft OneNote is a tool for note taking, information gathering, and multi-user collaboration. The application allows teachers to distribute their classroom notes to students in the Study live learning session.

Clicking the **OneNote** button launches Microsoft OneNote for both the teacher and students. Teachers can then click the **Send** button to send their notes and content to the students.



Send notes to students  
OneNote

The entire page content will be always updated in the students' OneNote when the tutor clicks **Send**. A new page will be created for the students if one does not already exist.

Note: Sanako Study only supports Microsoft OneNote 2007. The OneNote feature requires that Microsoft OneNote is installed on the tutor and student computers. Microsoft OneNote is a standard part of Office 2007.

## WEB BROWSER

**Launch** – Open Web browsers for the student and the tutor. You can use the tutor Web browser to control the student's browsing.

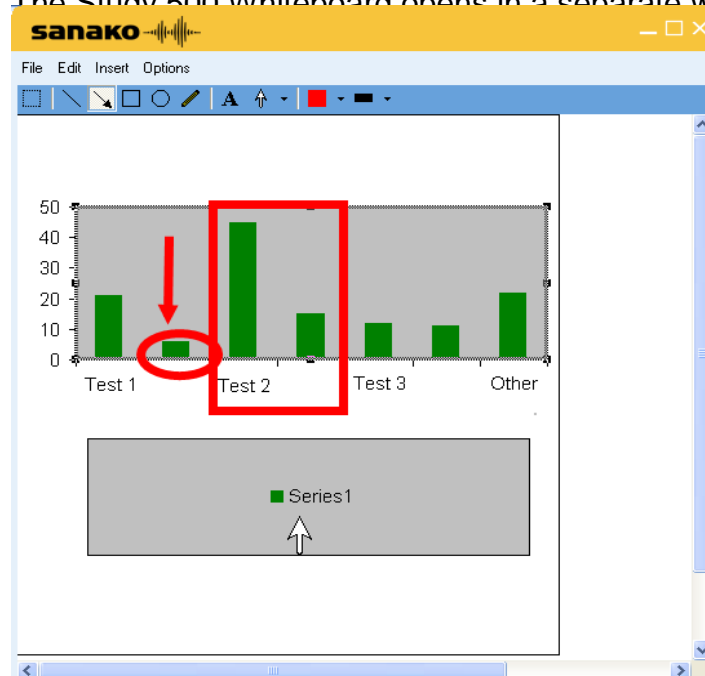
**Hide** – Close both the student and tutor Web browsers.

For more information on how to use the Web Browser and on how to control and set limits to students' navigation, see *Web browser* later in this guide.

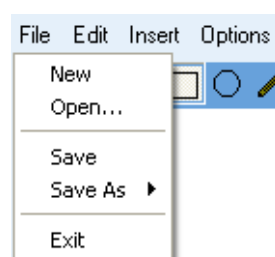
## WHITEBOARD

The Whiteboard is a tool that allows users to make annotations onto selected images. You can use any pictures as the background of the Whiteboard.

The Study 500 Whiteboard opens in a separate window.



## File menu



**New** – Clear the Whiteboard and start a new project.

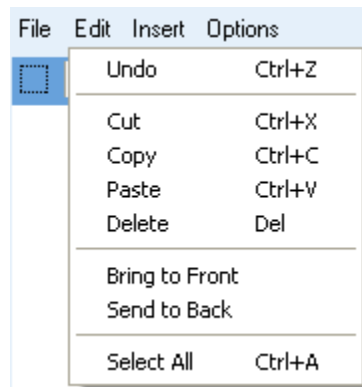
**Open...** – Open a saved Whiteboard project. Whiteboard projects include the background image and the annotations.

**Save** – Save the current Whiteboard project under the same name.

**Save As** – Save the current Whiteboard project as a Whiteboard project file, in which case the drawings can later be edited, or as a picture which cannot be edited.

**Exit** – Close the Whiteboard window

## EDIT MENU



**Undo** – Undo the previous command.

**Cut** – Cut the selected annotations and pictures. You can select annotations and pictures with the Selector tool.

**Copy** –Copy the selected annotations and pictures.

**Paste** –Paste any annotations or pictures that you have copied onto the Whiteboard.

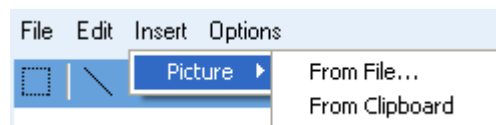
**Delete** – Delete the selected annotations or pictures.

**Bring to Front** – Bring the selected picture on top of the others on the Whiteboard.

**Send to Back** – Send the selected picture behind the others on the Whiteboard.

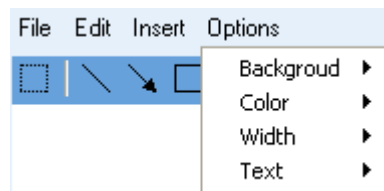
**Select All** – Select all the annotations and pictures on the Whiteboard.

## INSERT MENU



Insert a picture onto the Whiteboard. You can insert and arrange multiple pictures onto the Whiteboard.

## OPTIONS MENU



**Background** -- Select a new image to be used as the Whiteboard background or clear the background. If the '**Automatically Clipboard**' option is selected, any image that you capture or copy is automatically pasted as the Whiteboard background

**Color** – Select the color of the Whiteboard drawings.



**Width** – Select the width of line for the Whiteboard drawings.

**Text** – Select a text font style and size for the text tool.

### WHITEBOARD TOOLS

Select annotations and pictures by dragging the **selector** over them

Type in **text** or place a **pointer**



Drawing tools: **line**, **arrow**, **square**, **circle** and **free-hand**.

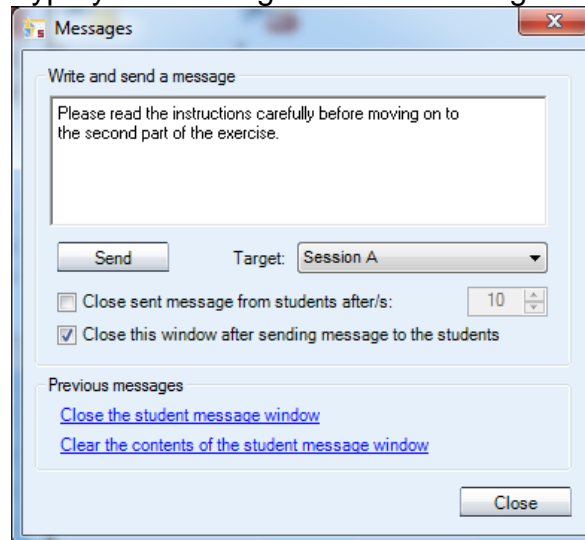
Select the **color** and **width of line**

### MESSAGES

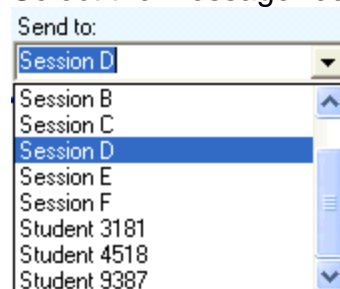
The message function allows you to display messages on student workstations, for example, to offer them additional guidance and instruction.

#### TO SEND A MESSAGE

1. Type your message into the Message text field.



2. Select the message recipient.

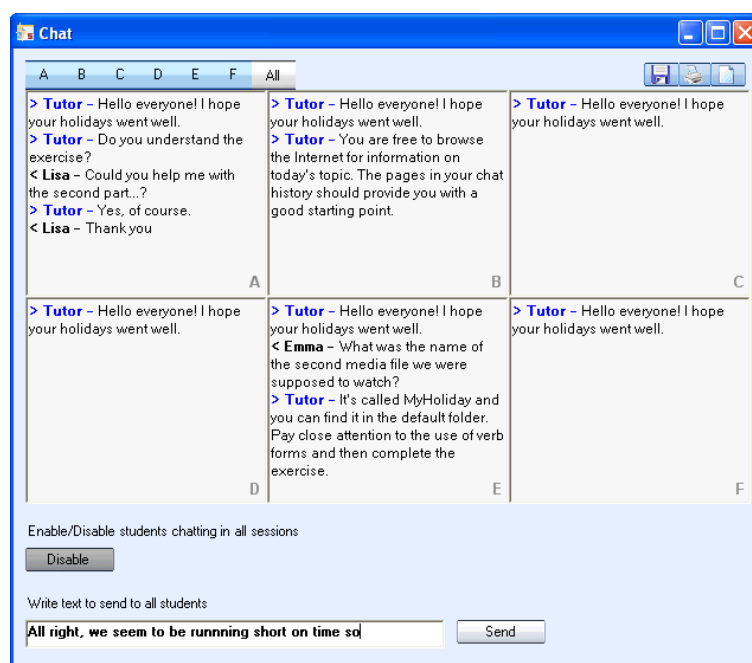


3. Click **Send**. The message is now displayed on student screens.

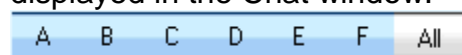
## CHAT

The text chat feature can be used by both teachers and students for quick and easy communication, without disturbing the other students.

Clicking **Chat** opens the Chat window. Study 500 has separate chat rooms for each session and you can either view the chat history of a single room or monitor all the chat rooms simultaneously in a mosaic window.

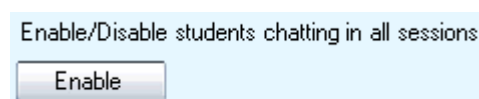


Click on the letters to select which session's chat history is displayed in the Chat window.



If **All** is selected then all six sessions are displayed simultaneously, allowing you to monitor all the chat discussions at the same time.

### ENABLE / DISABLE CHAT FUNCTION



The Chat function is unavailable for students, until you enable it for them. Clicking this button will enable or disable the chat function for the session that is currently displayed, or if you are in the All view, for all sessions.

### ***TO SEND A CHAT MESSAGE***

1. Type your message into the field at the bottom of the window.

Write text to send to all students

Hello everyone! I hope that y

Send

2. Click **Send**.
3. The message will be displayed for the currently selected session, or if you are in the All view, for all sessions.

### ***SAVE / PRINT / CLEAR CHAT HISTORY***

Click on the icons at the upper right corner to



**save,**



**print, or**



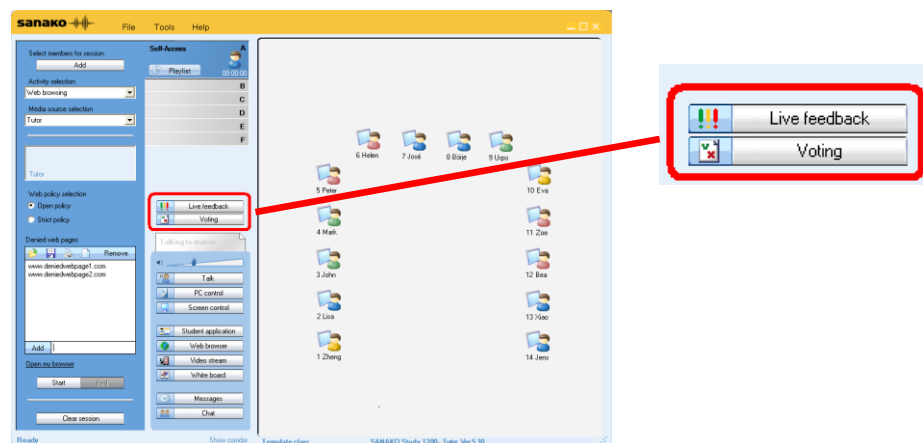
**clear**

the currently displayed chat history, or if you are in the All view all the chat histories.

# FEEDBACK AND VOTING

Feedback and voting features allow teachers to run on-the-spot queries to determine the level of student understanding and to establish whether students are following the lesson or having difficulty.

These features are available through the **Live feedback** and **Voting** buttons.



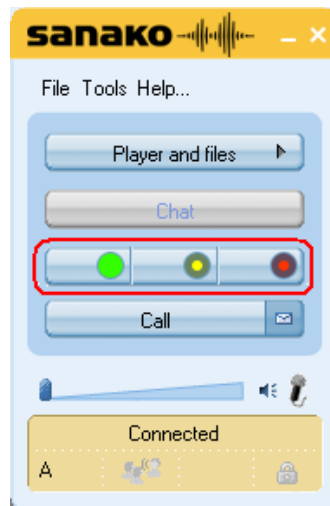
**Live feedback** allows students to indicate to the teacher the degree to which they are following instruction and if they need further explanation of the topic at hand.




With **Voting** teachers can quickly ascertain and test student understanding by sending them multiple-choice questions.

## LIVE FEEDBACK

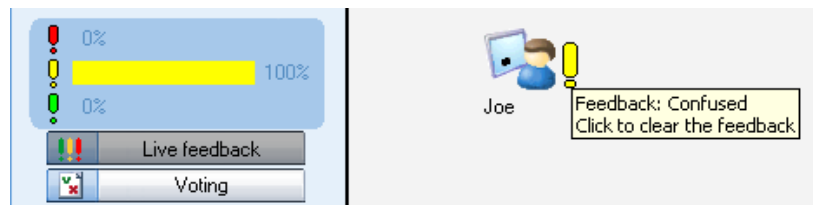
The **Live feedback** feature allows students to express how well they have been able to follow the lesson. Before students are able to give live feedback during a lesson, the teacher has to enable it by clicking the **Live feedback** button on the teacher interface.

Once the teacher enables Live feedback, three icons will appear on the student application.



Students may click these icons to express whether they are following  the lesson without any problems, are confused  and may need something to be explained in more detail, or are lost  and have not understood the topic at hand.

The teacher sees a graphical representation of the percentage of responses and an exclamation mark next to each student that has provided feedback. Please note that the system assumes that no feedback equals “following” and hence green.



Clicking the exclamation mark next to a student icon will clear the student feedback status.

## VOTING

Clicking the **Voting** button opens a window where you can create a multiple choice question and then send it to your students.

## CREATING MULTIPLE CHOICE QUESTIONS

Question  
Where can you visit the Eiffel tower?

Amount of choices  
☐ A...B ☒ A...C ☐ A...n 4

Click to edit and select correct answer

Correct answer	Choices
<input type="checkbox"/> A	London
<input type="checkbox"/> B	Beijing
<input checked="" type="checkbox"/> C	Paris

Create new Send Close

1. Enter your question
2. Select how many answer alternatives there will be. You can have either two (A...B), three (A...C), or an unlimited (A...n) number of alternatives.
3. Enter the answer alternatives into the fields under **Choices** and then check the correct answer
4. To start the test for students, click on the **Send** button.

If you want to start over (without sending the question) or create further questions, click on the **Create new** button at the lower left corner of the **Voting** window.

Question  
Where can you visit the Eiffel tower?

Amount of choices  
☐ A...B ☒ A...C ☐ A...n 4

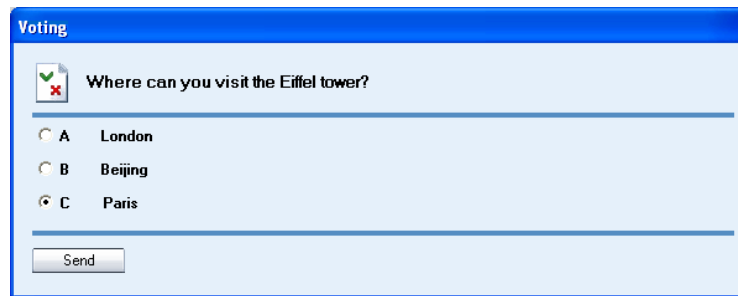
Click to edit and select correct answer

Correct answer	Choices
<input type="checkbox"/> A	London
<input type="checkbox"/> B	Beijing
<input checked="" type="checkbox"/> C	Paris

Create new Send Close

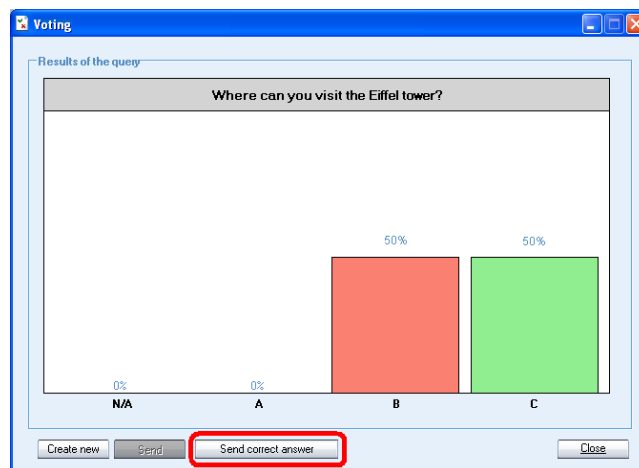
## ANSWERING MULTIPLE CHOICE QUESTIONS

When the teacher has sent the question to students it is displayed on the student screens and the students can select the correct response alternative.

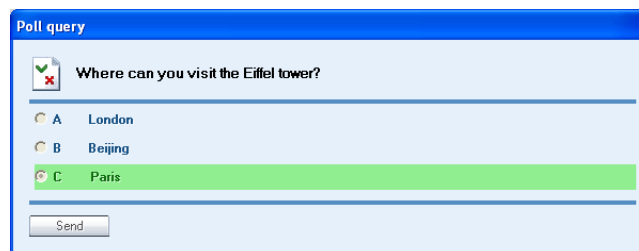


They confirm their answer by clicking the **Send** button.

While the students answer, a figure displaying the percentages of student responses is displayed and updated on the teacher screen in real time

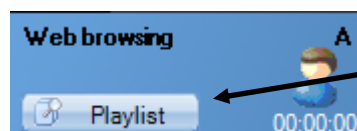


When the students have had enough time to answer the teacher may choose to reveal the correct answer for the students by clicking the **Send correct answer** button. The correct answer will then be highlighted in green at the student end.



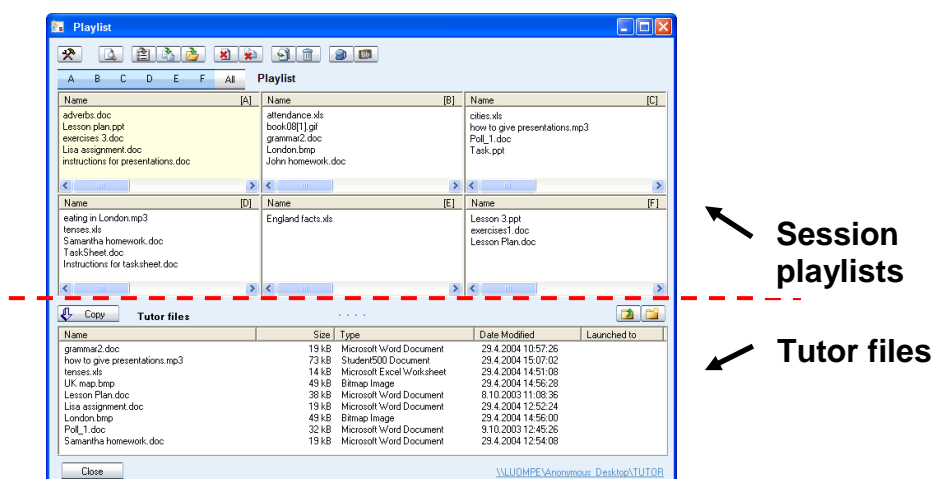
## PLAYLIST

The Playlist feature allows you to assign media files for students and to access a library of your own teaching materials. To open a window where you can manage files, click **Playlist** in any session tab.



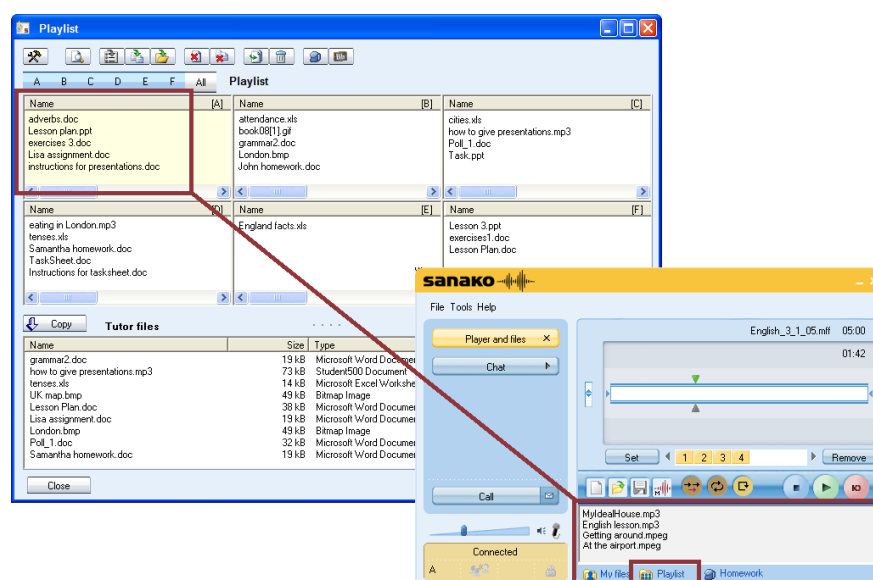
Manage student playlists and your teaching materials

The Playlist window displays the **Session playlist(s)** (top half of the window) and the **Tutor file area** (bottom half of the window).



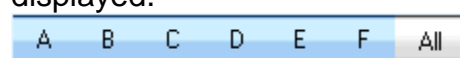
Study 500 has separate playlists for each session and for the tutor. You can use the session playlists to provide the students with material that they can access themselves.

The files that have been added to a session playlist by the tutor are available for students in their student player playlist.



## SELECTING ACTIVE SESSION PLAYLIST

Click on the letters to select which session playlist is displayed.



If **All** is selected then all six session playlists are displayed simultaneously. This allows you to add and copy files to all playlists, and also to launch files to all the sessions at once.



## BROWSING THE TUTOR FILE AREA

The Tutor file area is for storing files that you may use during your lesson. You can browse the folders and create new subfolders with the function buttons at the top right of the Tutor file area.



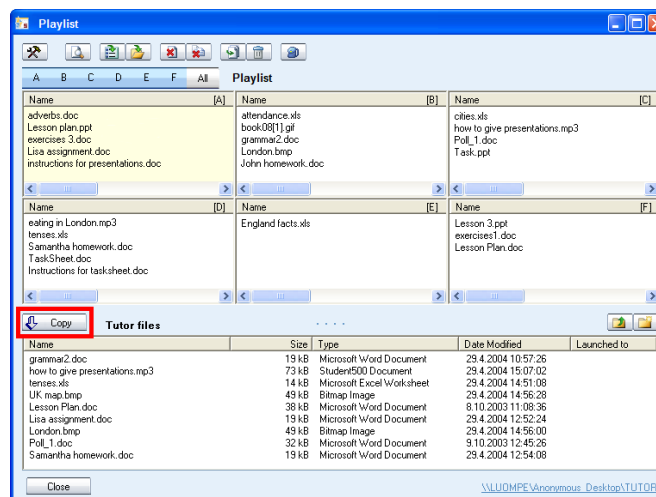
Move up in the folder structure



Create a new folder

## COPYING FILES

To copy files from the tutor file area to the active session playlist(s) or vice versa, click on a file in the **Playlist** window to select it and then click on the **Copy** button.



Depending on where the selected file is located in, the arrow in the **Copy** button changes automatically to indicate whether the file will be copied from the tutor file area to the session playlist(s) or vice versa.

## FILE FUNCTIONS

File functions are located at the top of the **Playlist** window



**Settings** allow you to change the location for storing playlist files and refresh the file lists



**Open** the selected file on the tutor screen



**Launch** the selected files for students

Note: File has to be located in a shared network location



**Copy and launch** files for students



**Launch files from** a location outside the playlist file areas



**Close** the selected files on the student workstations



**Close all** launched files



**Add** files to the active file area



**Remove** the selected file

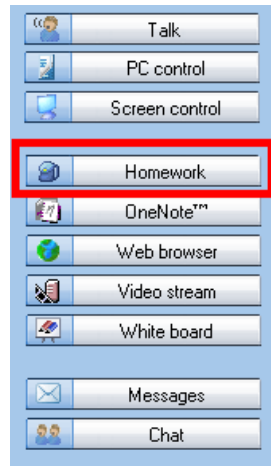


**Add homework files** to the students' homework list and access the Homework window where you can distribute and collect exercise files.

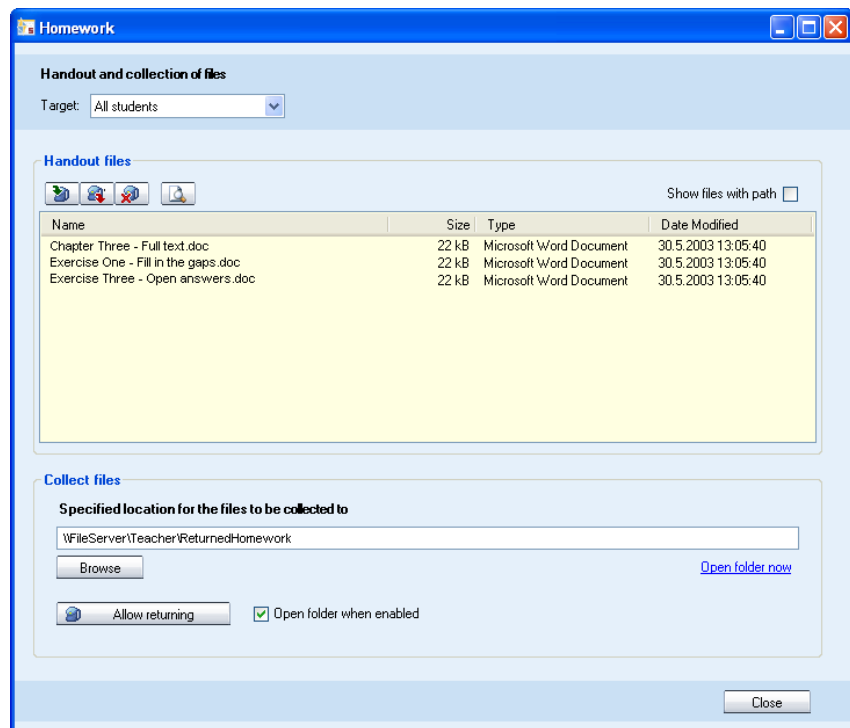
# HOMework

The **Homework** feature allows teachers to distribute material to students for independent work. Students are then free to save these files on a USB stick, for example, and work on the material at school or at home.

To open the **Homework** window where files can be distributed to and collected from students, click the **Homework** function button.

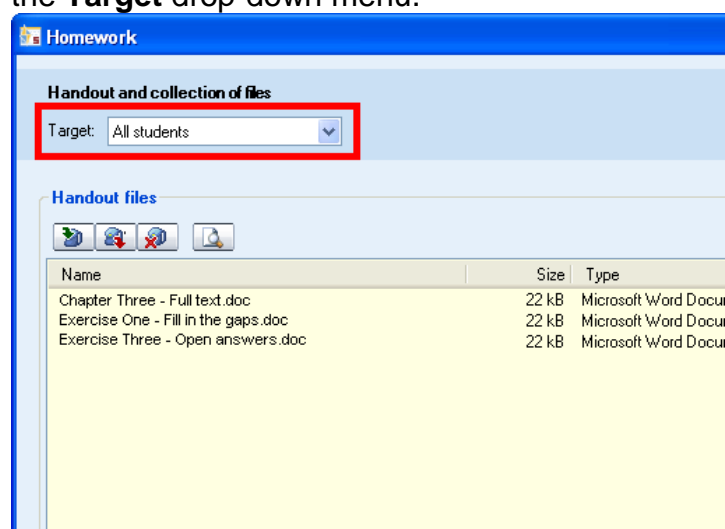


This opens the **Homework** window where you can assign homework material to students and collect the students' work back.




## ADDING AND REMOVING HOMEWORK FILES

When handing out homework material to students, you need to first select who you want to give the homework files to with the **Target** drop-down menu.




The icons above the handout files list allow you to add and remove homework files.



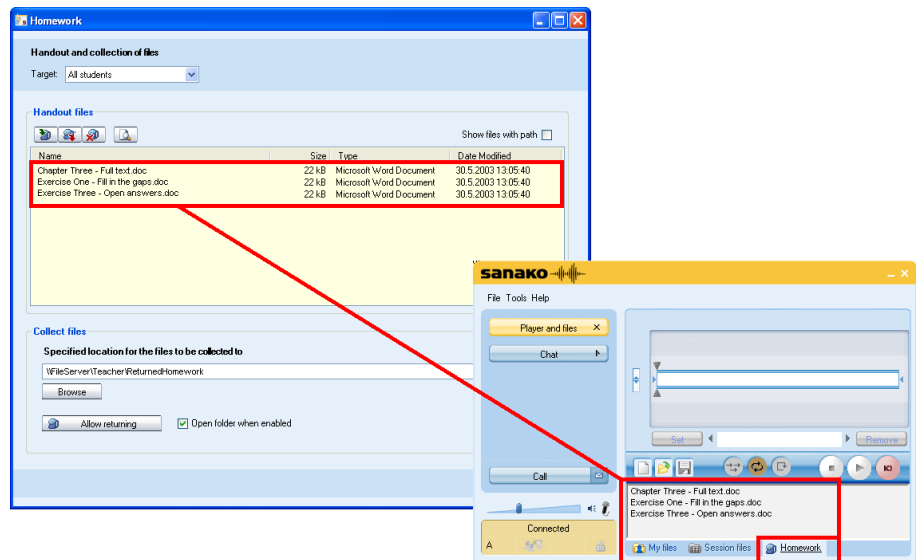
 **Add** a handout file. A window opens automatically where you can browse for the file.

 **Remove** the selected file from the handout files list

 **Remove all** files from the handout files list

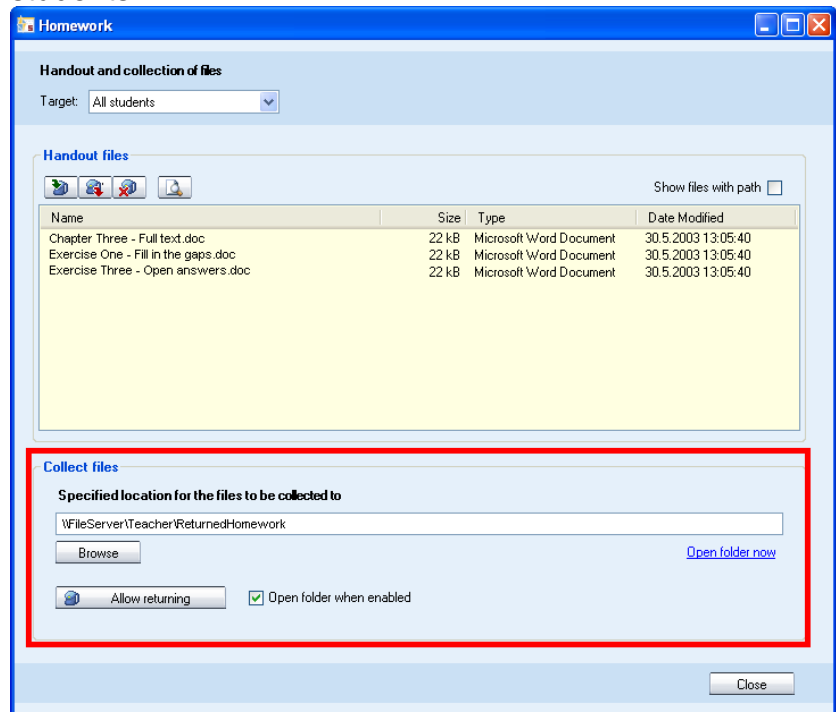
 **Preview** the selected handout file on the teacher computer

The files that have been added to the homework files by the tutor are available in the Student Player Homework file area.



## COLLECTING HOMEWORK

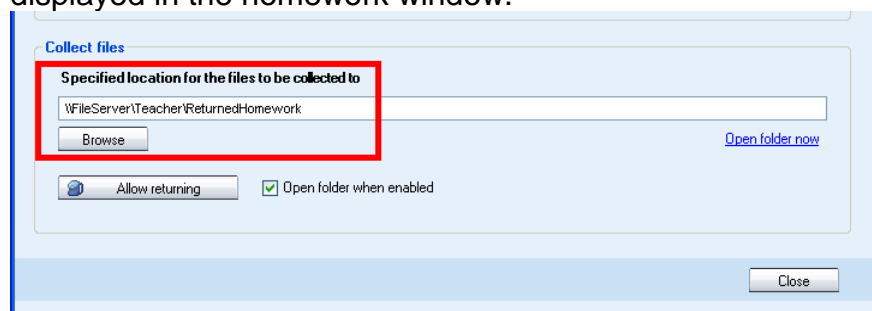
The lower part of the **Homework** window includes the functions for collecting homework assignments back from students.



## SELECTING COLLECTION FOLDER

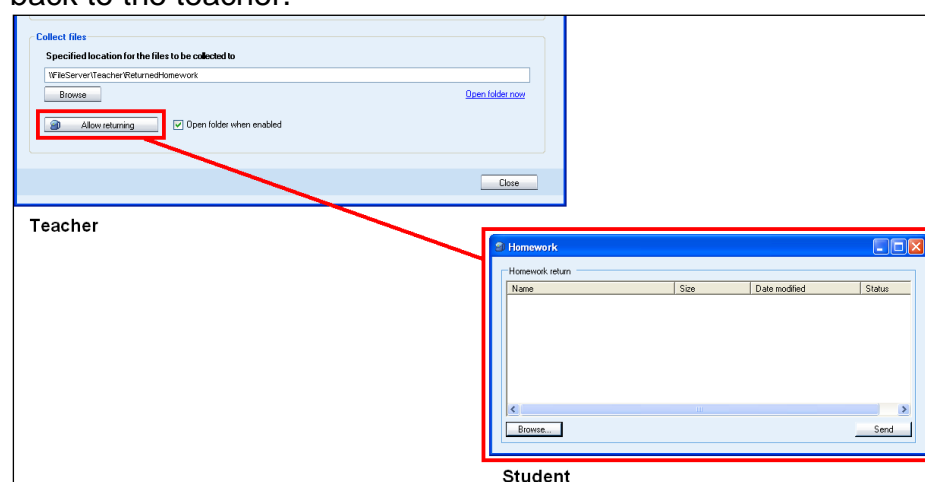
Before students can hand in their work, you need to define the location where the collected files will be saved. Click **Browse** and select a suitable folder. The folder path is then

displayed in the homework window.

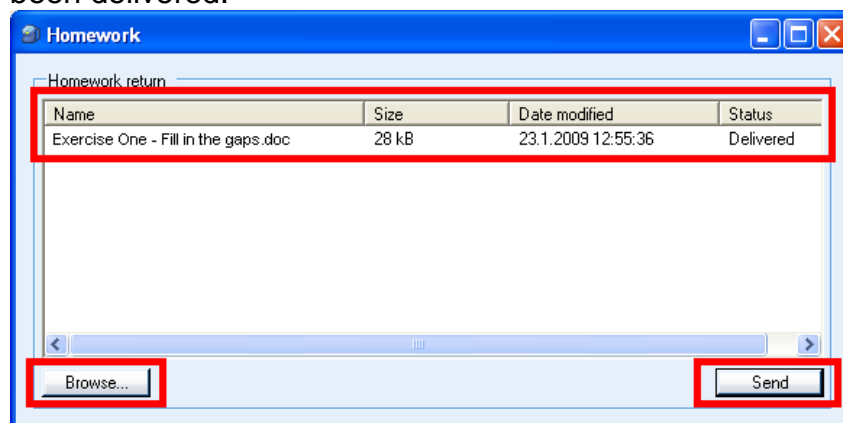


## HANDING IN HOMEWORK FILES

To allow students to hand in their work, click the **Allow returning** button. This opens a window on student computers where students can send their homework files back to the teacher.



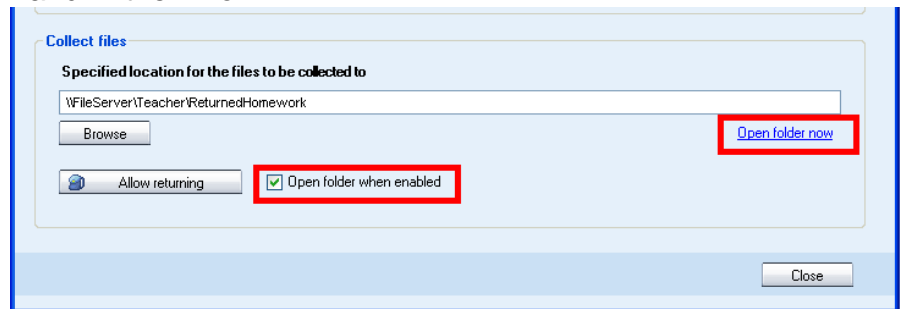
At the student end, click **Browse** and select the file you want to hand in. The file is now displayed in the student window for returning homework. To send the file to the teacher, click **Send**. The **Status** column tells the student when the file has been delivered.



## VIEWING RETURNED FILES

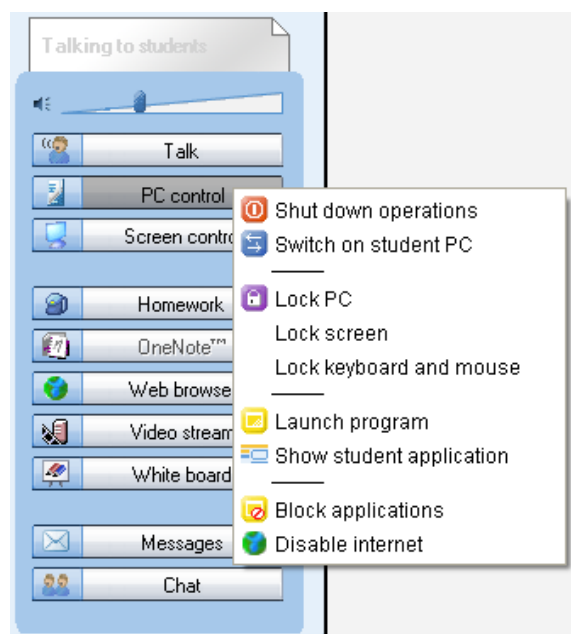
The teacher can view the returned files, by clicking the **Open folder now** link. If the **Open folder when enabled** option is

checked, then the folder where the files are collected to is opened automatically when the teacher allows students to hand in their work.



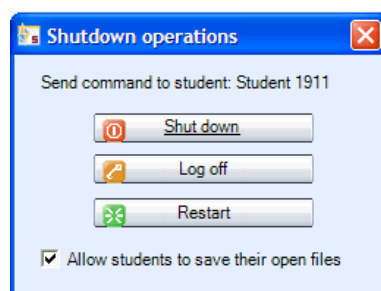
## PC CONTROL OPTIONS

PC Control options include shut down and start up functions, locking functions, and the possibility to launch programs, select which applications students can use, disable Internet use and show or hide student applications on the student computers.



## SHUT DOWN OPERATIONS

Selecting **Shutdown operations** opens a dialog that allows you to control the shutdown functions of student computers.



Checking the **Allow students to save their open files** option will let the students save open files before the selected shutdown command is performed.

**Shut down** – Shut down student computers

**Log off** – Log off current users on student computers

**Restart** – Reboot student computers

## SWITCH ON STUDENT PC

Selecting Switch on Student PC starts up the student computers in the group or classroom.



---

Note: This function requires that Wake-On-LAN has been enabled on the student PC network cards.

---

## LOCKING OPTIONS

**Lock PC** – Students' screens are blacked out and students are unable to use neither their keyboard nor mouse. You can then launch files or applications on top of the blank screen. To unlock the student computers, re-click the option.

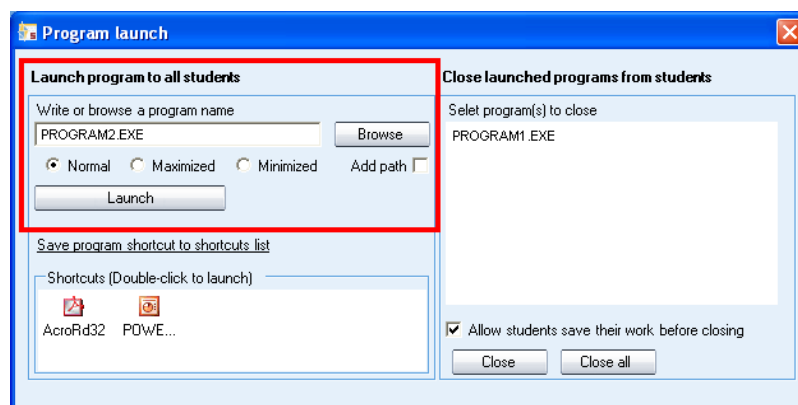
**Lock screen** – Students' screens are blacked out, but students can still use their mouse and keyboard to work with anything you launch on their screen. To unlock the student computers, re-click the option.

**Lock keyboard and mouse** – Students are able to view their own screens, but will not be able to use their keyboard or mouse. To unlock the student computers, re-click the option.

## LAUNCH PROGRAM

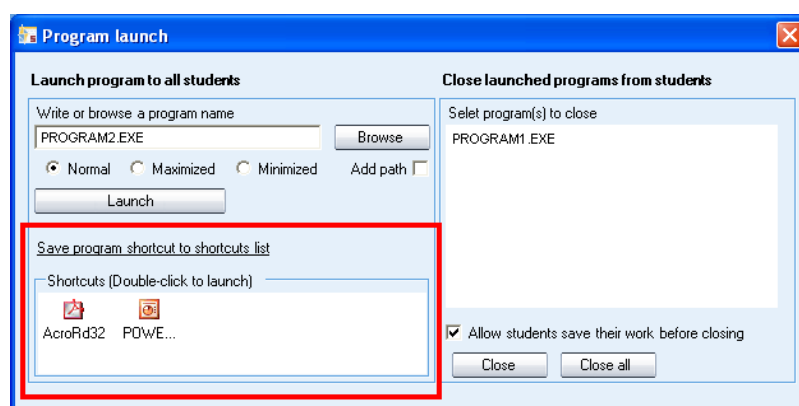
Selecting **Launch program** allows you to launch any programs on the student computers or in a shared area for the students, as well as create shortcuts to programs that are frequently used.

### TO LAUNCH A PROGRAM FOR STUDENTS



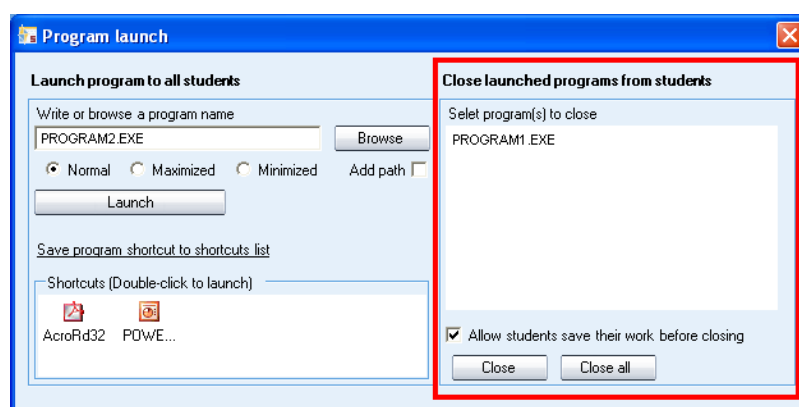
1. Either type in the name of the program or click **Browse** to browse for it (\*.exe files).
2. Select whether the program window on student screens should be **Normal** size, **Maximized**, or **Minimized** to the taskbar.
3. Click **Launch**.

## TO CREATE A SHORTCUT



1. Click **Browse** to browse for a program
2. Click **Save program shortcut to shortcuts list** to create a shortcut to the selected program.
3. You can now launch the program to students simply by double-clicking the shortcut. To remove a shortcut, simply select it and press Delete on your keyboard.

## TO CLOSE A LAUNCHED PROGRAM



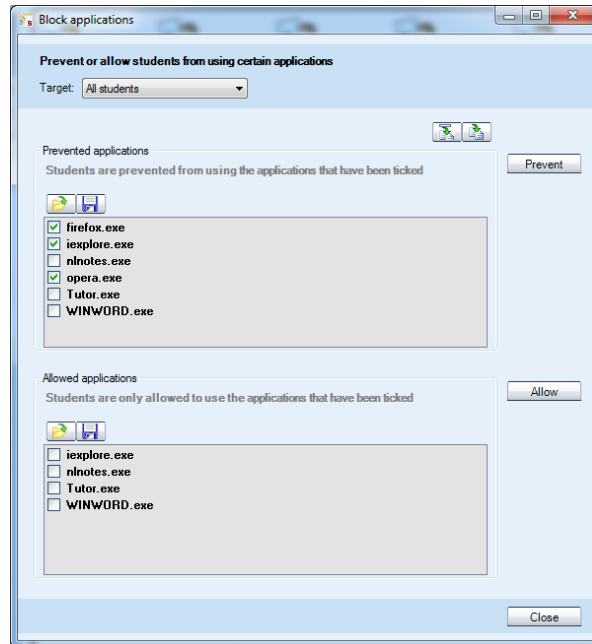
1. Select a launched program that you want to close on the list.
2. Select whether you want to allow students to save their work before the program is closed.
3. Click on the **Close** button to close the selected program or click on the **Close all** button to close all launched programs

## SHOW STUDENT APPLICATION

Clicking this button will either show or hide the student applications on the student screens.

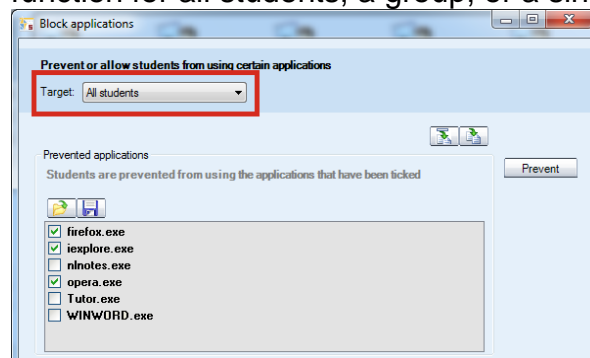
## BLOCK APPLICATIONS

Blocking applications allows you to select which applications students are allowed to access and use.



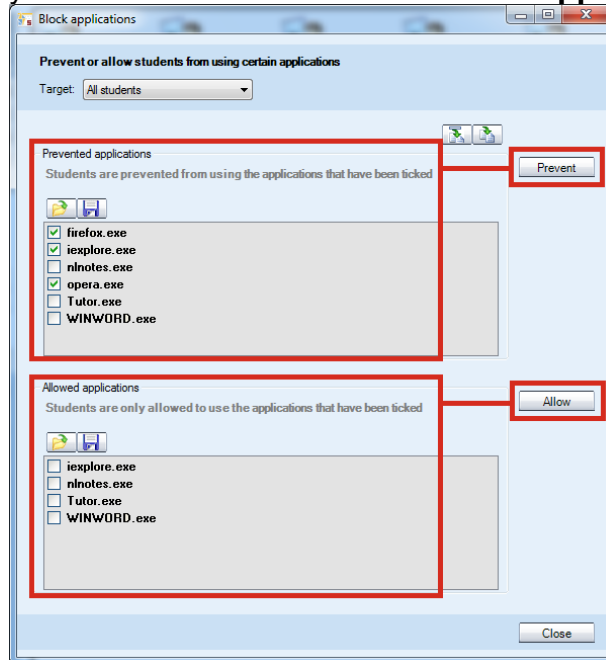
To allow or prevent applications

1. Select who you want to prevent or allow applications for with the **Target** drop-down menu. You can use the function for all students, a group, or a single student



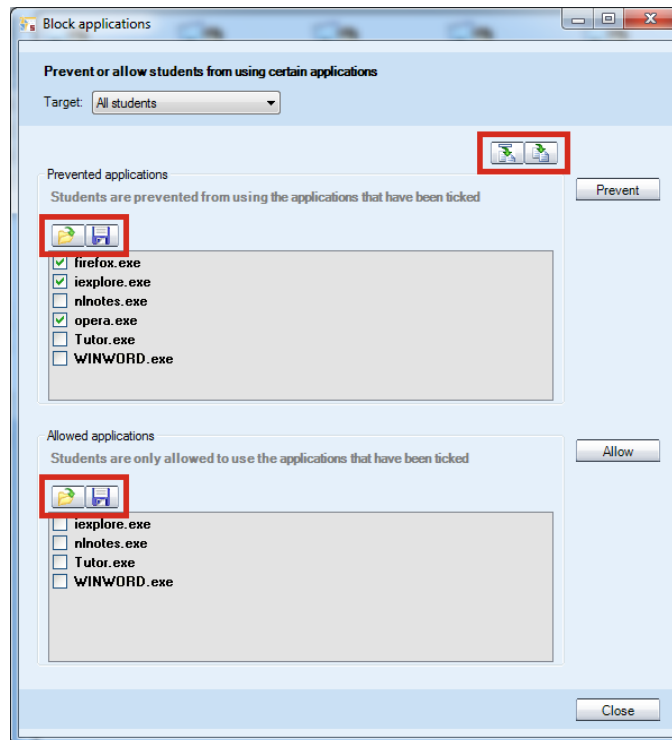
2. Check the applications that you want to prevent under the **Prevented applications** list or the applications





you want to allow under the **Allowed applications** list



3. Click either **Prevent** or **Allow** to activate the selections
  - Click **Prevent** to deny the selected applications. Students will now be able to use any applications except the ones that have been checked.
  - Click **Allow** to allow students to use only the selected applications. Students will now be unable to access any applications except the ones that have been checked.

## EDITING THE LISTS OF PREVENTED AND ALLOWED APPLICATIONS:



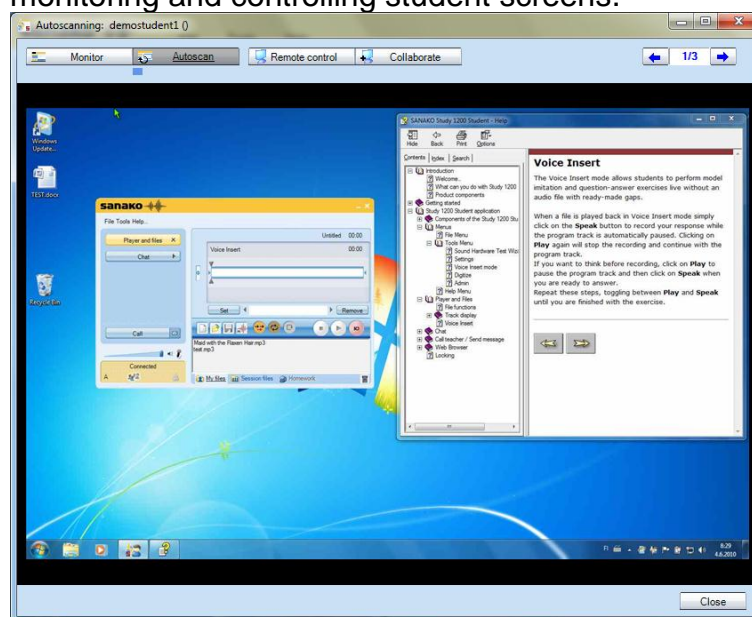
- To **add** a selected application to the denied and allowed applications lists, click the  button and enter the name of the application.
- To **add all** the applications currently open on the student computers to the lists, click the  button.
- To **load** the application list **from a file**, click the  button for the Denied applications or Allowed applications list.
- To **save** the application list into a file for later use, click the  button for the Denied applications or Allowed applications list.

## DISABLE INTERNET

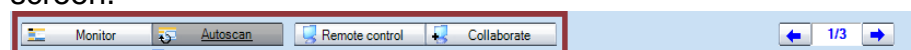
Selecting **Disable Internet** prevents the students from opening and using Web browsers on the student workstations.

# SCREEN CONTROL WINDOW

The screen control window has all the functions for monitoring and controlling student screens.



Select a screen control mode with the buttons on top of the screen.



## MONITOR

View the selected student screen and listen to the student.

## AUTOSCAN

Autoscan automatically changes monitoring from one student to the next after a set period of time.

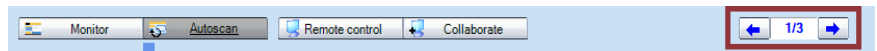
## REMOTE CONTROL

Control the currently displayed student screen with your mouse and keyboard, for example, to help the student with a task. The student's mouse and keyboard are locked during Remote Control.

## COLLABORATE

Control the currently displayed student screen with your mouse and keyboard simultaneously with the student, for example, to instruct the student in the use of an application. Both you and the student will move the same mouse pointer.

## NEXT / PREVIOUS STUDENT SCREEN



Use the arrow buttons to change to the next or previous student screen.

# WEB BROWSER

The Study 500 Web browser contains all the functions of a standard browser, as well as additional features that allow you to control students' navigation.



The tutor's Web browser

## BROWSER CONTROL BUTTONS



Back

**Back** moves back to the last visited Web page.



Forward

**Forward** moves to the page you viewed before clicking the Back button.



Stop

**Stop** stops opening and loading a Web page.



Refresh

**Refresh** gets the latest version of a currently viewed Web page. If a page cannot be displayed, you may try to reload it by clicking Refresh.



Home

**Home** moves to the default home page.



Search

**Search** launches an Internet search page.



Print

**Print** prints the current web page.



Send

**Send** opens student browsers on the Web page you currently have open. For more information see the *To open Web browsers for students* part later in this section.



Follow

**Follow** makes student browsers follow your navigation. For more information see *Follow mode* later in this section.

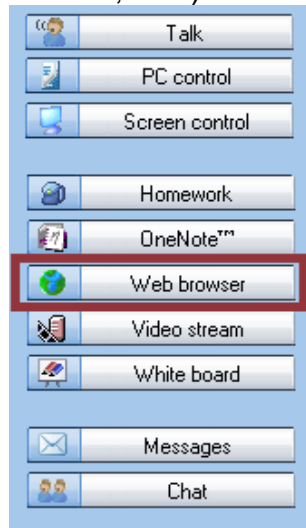




**Settings** allows you to block pop-up windows and to show or hide the toolbar on student browsers

## TO OPEN WEB BROWSERS FOR STUDENTS

1. You can open the Web browser for all students (Function buttons; button) or for a session (Function buttons; icon)



2. Select one of the above. The tutor's Web browser opens on your screen.



*The tutor's Web browser*

3. Go to the Web page you want student browsers to open.

- Click **Send**. Web browsers will now open on student screens.



Student Web browser

## FOLLOW MODE



In the Follow mode, students' browsers will display the Web site that is open on the teacher's browser. The students are only able to follow your navigation as the control buttons are hidden from their browsers.



Student browser in Follow mode

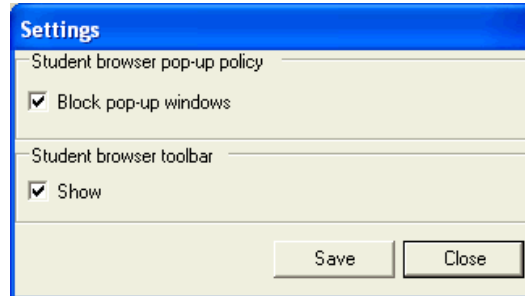
This allows you to browse the web and present material while student browsers follow your navigation. Once the

presentation is over, you can let students continue with independent study.

**To Enable / Disable the Follow mode**, click on the **Follow** button.

## SETTINGS

**Settings** allows you to block pop-up windows and show or hide the toolbar on student browsers.



**Blocking pop-up windows** prevents any additional and unnecessary windows from opening automatically when a student opens a Web page.

**Hiding the toolbar** on student browsers is useful when you want students to concentrate on the current Web page instead of browsing elsewhere.

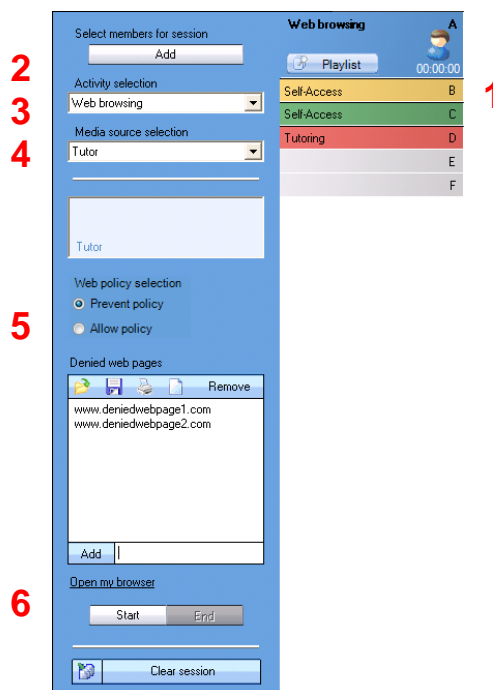
# ACTIVITIES

## GENERAL PROCEDURE

Study 500 has three pre-set learning activities that form the basis for teaching with Study 500. The Activity view only displays the options that are relevant to the currently selected activity.

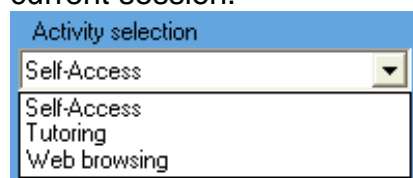
### To start an activity for a session

1. Select a session
2. Add students to a session
3. Select an activity
4. Select a Media source
5. Activity specific settings
6. Start / End activity



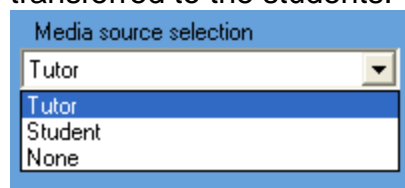
## ACTIVITY SELECTION

First of all, select an activity that you want to start for the current session.



## MEDIA SOURCE SELECTION

The Media source is what the session hears during an activity. In Tutoring, the Media source's screen is also transferred to the students.



**None** – The activity will be run without a media source.

**Tutor** – You can talk to the students during the activity.

**Student** – A selected student can talk to the others during the activity.

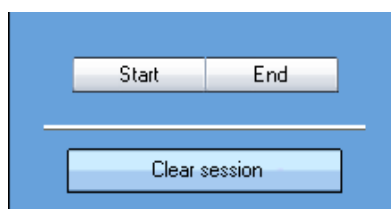
If you select Student as the media source, you need to then click on a student icon to select the source student.

---

Note: The Self-access activity does not have Media source selection.

---

## ACTIVITY CONTROLS



**Start** – Starts the selected activity and plays the Media source to students

**Pause** – Pauses the current activity and the media source. The **Start** button turns into **Pause** when an activity is running. You can pause the activity, for example, to let the students do an exercise or to give them instructions.

**End** – Ends the activity. The media source is stopped and student players are set to free.

If the media source was a file, the file will remain in the student players and they can listen to it again.

**Clear session** – Clears all the settings and switches back to Self-Access.

## SELF-ACCESS

In the Self-access activity, students have free access to use their workstations and the Study 500 Student application. If no other activity is selected, the students are always in Self-Access. You can still use all the Study 500 functions to communicate with and control the students if needed.

## TUTORING

In the Tutoring activity, the screen of the media source is transferred to the session and the source can also talk to the others. You can either select yourself or one of the students as the media source.

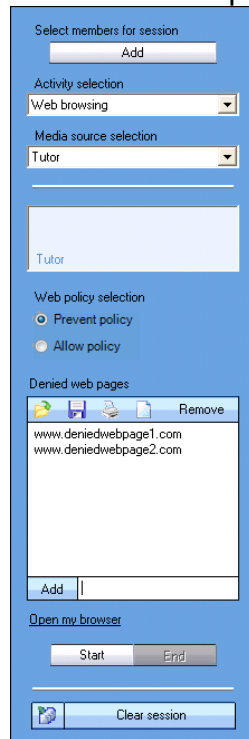
If you select Tutor as the media source, the Study 500 Tutor application is minimized to the taskbar, allowing you to

instruct students using any applications that are on the teacher computer.

If you select Student as the media source, you can also select whether you want to view the student screen during the activity.

## WEB BROWSING

Starting the Web browsing activity launches Internet Explorer browsers on student workstations. You can set limits to their access to Web pages.

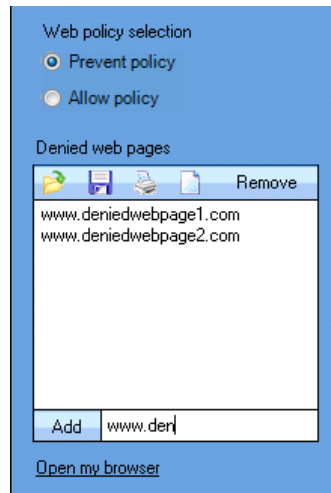


The screenshot shows a configuration window for the 'Web browsing' activity. It includes a 'Select members for session' section with an 'Add' button. Below is the 'Activity selection' dropdown set to 'Web browsing'. The 'Media source selection' dropdown is set to 'Tutor'. A 'Web policy selection' section has two radio buttons: 'Prevent policy' (selected) and 'Allow policy'. The 'Denied web pages' section contains a list with two entries: 'www.deniedwebpage1.com' and 'www.deniedwebpage2.com', each with a 'Remove' button. At the bottom, there is an 'Add' button, a 'Clear session' button, and 'Start' and 'End' buttons.

### WEB POLICIES: PREVENT AND ALLOW

**Prevent** – students are able to access all Web sites, except the ones on the list.

**Allow** – students are only able to access the Web sites on the list.



**To add an address** to the list, type or copy it to the field at the bottom and click **Add**.

**To remove an address** from the list, select the address and click **Remove**.

#### LOAD / SAVE / PRINT / CLEAR ADDRESSES

Click on the icons to:



**Load** a previously saved file of denied / allowed addresses



**Save** the current list of addresses for later use



**Print** the current list of addresses



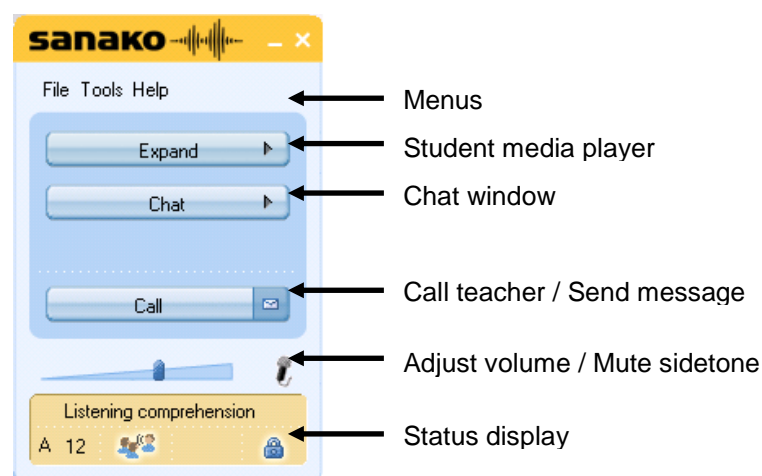
**Clear** the list of addresses

#### OPEN MY BROWSER

This opens the tutor Web browser, with which you can take control of the student browsers.

# STUDY 500 STUDENT APPLICATION

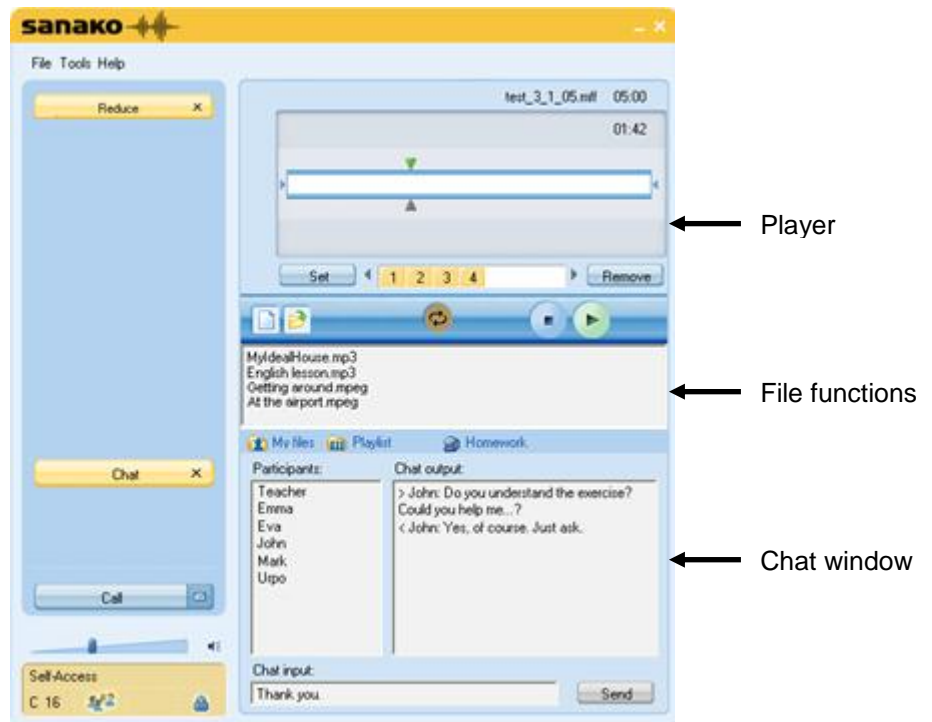
## COMPONENTS OF THE STUDY 500 STUDENT APPLICATION



*Sanako Study 500 Student interface*

The **Expand** and **Chat** buttons open new windows on the interface.





Sanako Study 500 Student interface with the Media Player and Chat windows

Below, you will find short presentations of the components of the Study 500 student interface, each of which will be explained in more detail later in this guide.

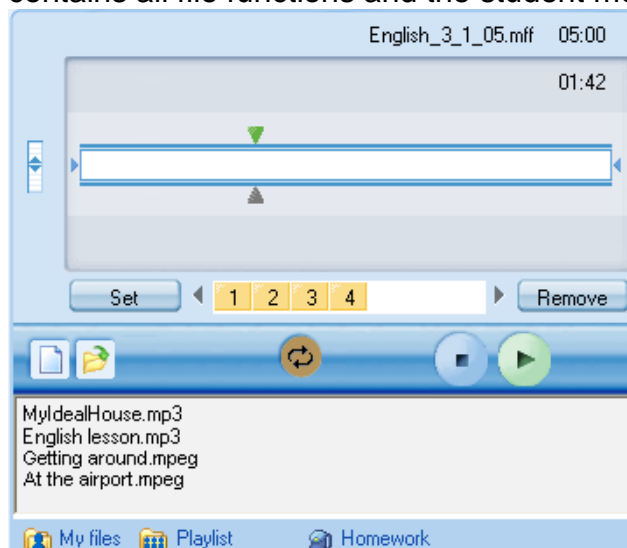
## MENUS

File Tools Help

The three menus of Study 500 Student give you access to file functions, settings and preferences, and to online help.

## MEDIA PLAYER

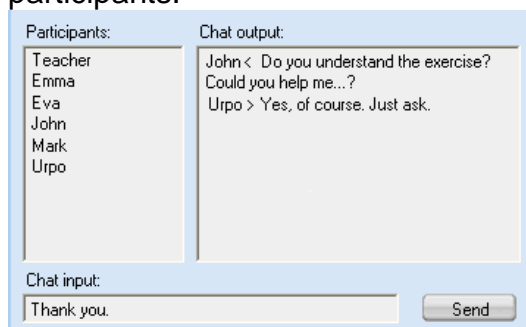
Clicking **Expand / Minimize** opens and closes a window that contains all file functions and the student media player.



For more information on file functions and using the player, see the *Media player* section later in this guide.

## CHAT

The Chat function can be enabled or disabled by the teacher. When enabled, clicking **Chat** opens a window displaying the chat room of the student's session and the other chat participants.



For more information on the Chat function, see the

Chat section later in this guide.

## VOLUME ADJUSTMENT



**To adjust your speaker volume**, move the slider.

**To switch sidetone on/off**, click on the microphone icon. When sidetone is on the students can hear their own voices through their headsets while speaking.

## STATUS DISPLAY



The field at the lower left corner of the Student application displays your current status:

Listening comprehension

the current activity set by the Tutor

A 12

your current session and position number



you have been set as a model student. This means that your screen is shared to the other students and you can talk to them.



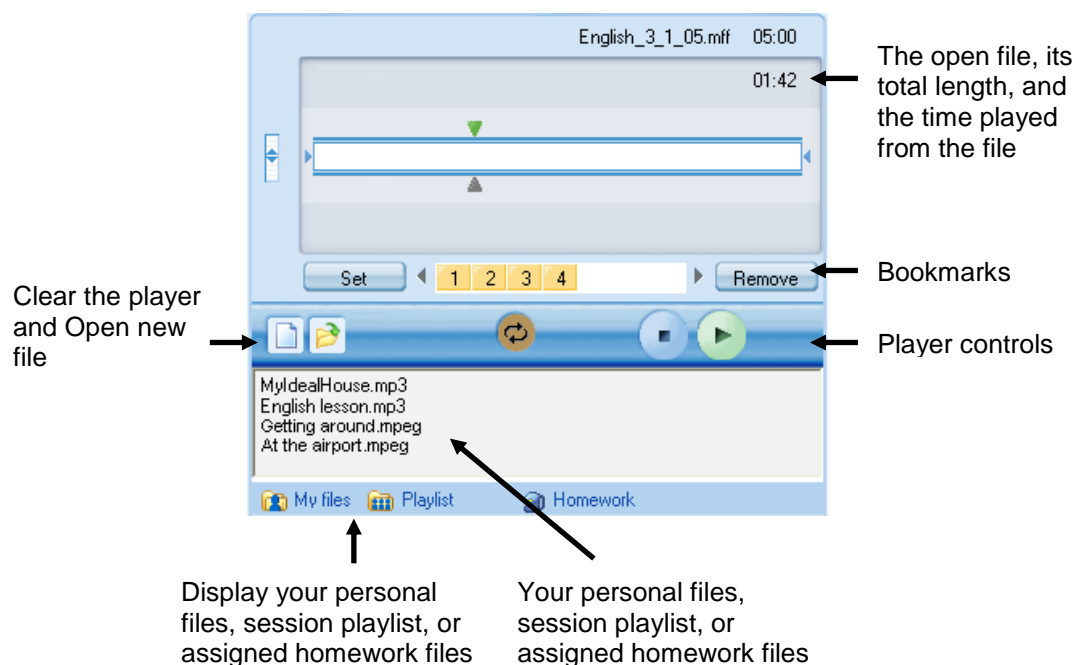
the lock symbol indicates whether your player controls are locked or free

## GETTING HELP


The **Help** menu in the Student application allows you to access an online help file for Study 500, to view video tutorials and to view version information on your Study 500 Student application


# MEDIA PLAYER

Clicking the **Expand / Minimize** button opens and closes the media player that you can use to play back media files in commonly found formats, such as WAV, AVI, MP3, as well as in Sanako's own file formats MFF and MAA. This allows you to also use material created with the Sanako Authoring tool, Lab 300, and Media Assistant.



## FILE FUNCTIONS

 **New** – Clear the Player. This will close the currently open file and remove all bookmarks.

 **Open** – Open a media file for the Player. This opens a dialog in which you can browse for a file.

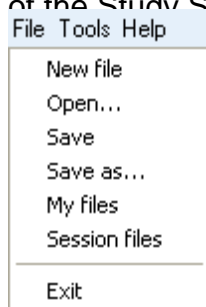
 **My files**  **Playlist**  **Homework**

**My files** – Display the files in your own personal file area. All students have personal file areas where they can store files for themselves.

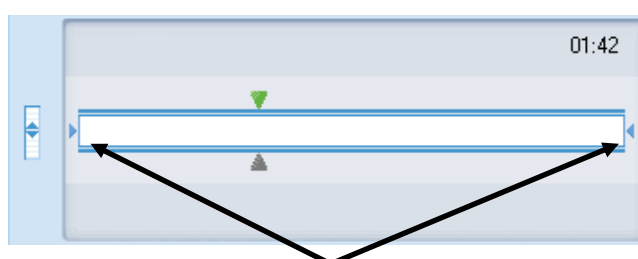
**Playlist** – Display the files in your session's playlist. Each session has its own playlist assigned by the teacher.

**Homework** – Display the files that the teacher has assigned for your individual work. You can save these files and work on them at school or at home.

Note: Some file functions are also available in the **File** menu of the Study Student application.



## TRACK DISPLAY



Isolate a segment to be played separately.

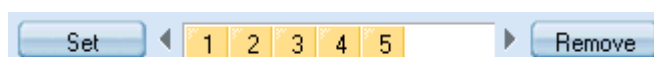
**To isolate a segment** of the media file to be played separately move the small tabulators at each end of the track display by holding your mouse button down over them.

---

Note: The tabulators are not available when audio graphs are used.

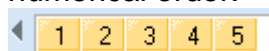
---

## BOOKMARKS



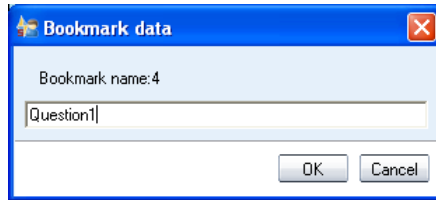
Bookmarks allow you to mark places to return to in the program. Clicking a set bookmark will start playing from the selected place.

**To set a bookmark**, click **Set**. This will add a mark in the numerical order.



**To clear unwanted bookmarks**, click **Remove** and then the appropriate bookmark.

**To name a bookmark**, right-click the bookmark to open a dialog in which you can enter a name for the bookmark.



The bookmark name is then displayed as a tooltip when you move the mouse pointer over the bookmark

### ***PLAYER CONTROLS***



**Play** – Plays the open file.



**Pause** – Pauses the file. When a file is being played, the **Play** button turns into **Pause**.



**Stop** – Stops the file.



**Repeat** – Repeats the selected segment or entire file.

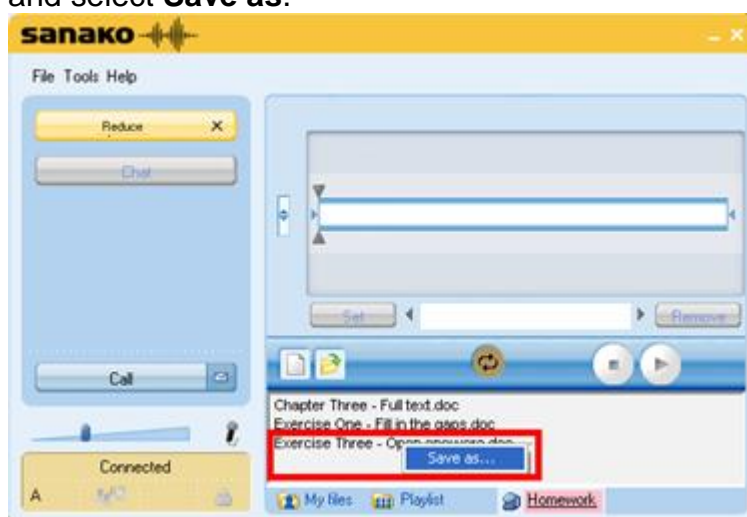
# HOMework

The Homework feature allows teachers to distribute material to students for independent work. Students are then free to save these files on a USB stick, for example, and work on the material at school or at home.

## ACCESSING HOMEWORK FILES

The files that have been added to the homework area by the tutor are available for students in the Student Player Homework file area.

To save the homework files on the student computer, or on an USB stick, either double-click the file or right-click the file and select **Save as**.

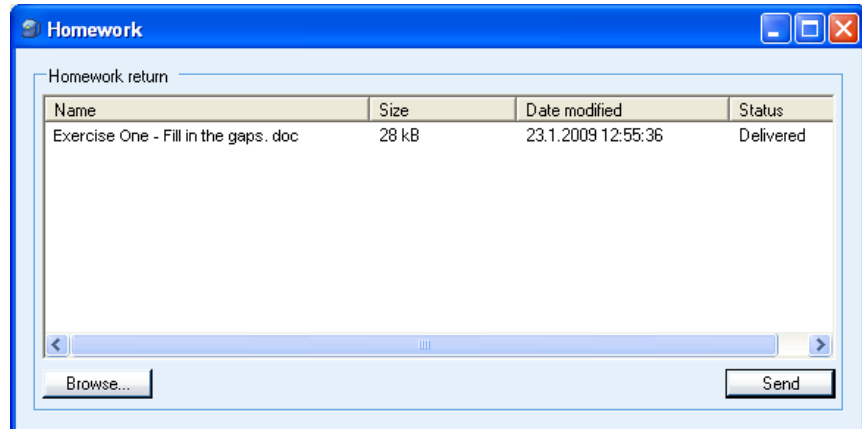


Once the students have saved the homework files, they are free to work with them anywhere.

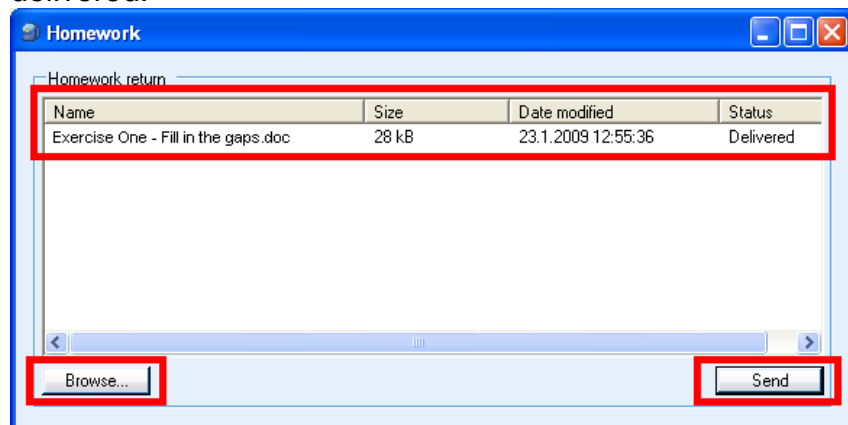
## HANDING IN HOMEWORK FILES

Students are only able to hand in their homework, when the teacher allows them to do so. When the teacher allows students to hand in their homework, a window opens on student computers where they can send their homework files

back to the teacher.



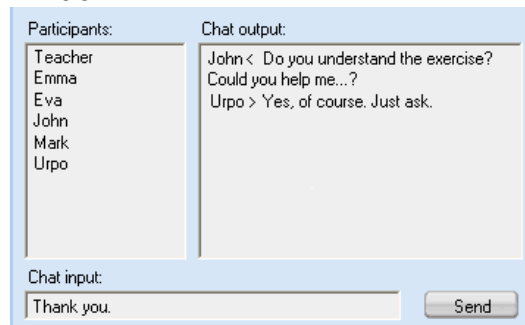
To select the file you want to hand in, click **Browse** and locate the homework file. The file is now displayed in the homework window. To send the file to the teacher, click **Send**. The **Status** column tells you when the file has been delivered.





# CHAT

The teacher can enable and disable the Chat function for the students. When enabled, clicking **Chat** will open the Chat window.

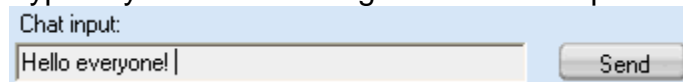


The screenshot shows a chat window with a light blue border. It is divided into three main sections. On the left, under the heading 'Participants:', there is a list of names: Teacher, Emma, Eva, John, Mark, and Urpo. On the right, under the heading 'Chat output:', there is a text area containing the following messages: 'John < Do you understand the exercise? Could you help me...?', 'Urpo > Yes, of course. Just ask.', and a blank line. At the bottom, under the heading 'Chat input:', there is a text input field containing 'Thank you.' and a 'Send' button to its right.

All sessions have their own chat rooms in Study 500. The Chat window displays the chat history and participants of the session you are currently in.

## ***TO SEND A CHAT MESSAGE:***

1. Type in your chat message in the Chat input field

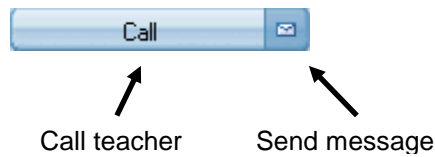


This is a close-up of the 'Chat input:' section. It shows a text input field with the text 'Hello everyone! |' and a 'Send' button to its right.

2. Click **Send**. Your chat message is displayed in the Chat output window.

## CALL TEACHER / SEND MESSAGE

Whenever students need to communicate with the teacher, they can either call the teacher or send a written message.

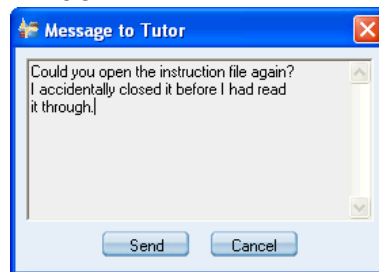


### ***TO CALL THE TEACHER***

1. Click the **Call** button.
2. The teacher screen will now display a question mark on top of your student icon, indicating that you want to talk with the teacher.

### ***TO SEND A MESSAGE TO THE TEACHER***

1. Click the **Message** icon . This opens a Message window.



2. Type in your message.
3. Click **Send**, the message will be displayed on the teacher screen.

# WEB BROWSER

The teacher can launch Web Browsers for the students at any time and has the possibility of controlling students' navigation.



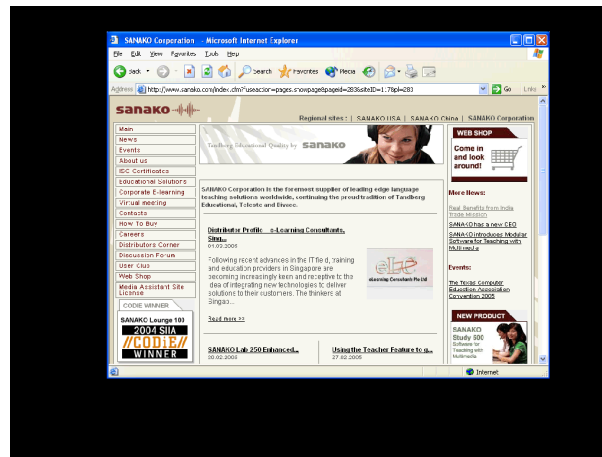
## TEACHER CONTROL

If the teacher sets the student browsers into Follow mode, student browsers will only display the page that is open on the teacher's browser. Students are also unable to navigate as their control buttons are grayed.

The teacher can also set limits to students' navigation by defining allowed and denied Web pages.

# LOCKING

The teacher can use different locking options in order to draw the students' attention to the current task.



*Locked student screen with an open application*

**If the teacher has locked your PC,** your screen is blacked out and you can only view files and applications that the teacher opens.

**If the teacher has locked your screen,** it is blacked out but you can still use your mouse and keyboard to work with the files and applications that the teacher opens.

**If the teacher has locked your mouse and keyboard,** you can see your own screen, but cannot use your mouse and keyboard.

# EXTENSION MODULES FOR SANAKO STUDY 500

Sanako Study extension modules enhance teaching and learning effectiveness and provide instructors with a powerful array of new teaching tools.

Note: The extension modules presented below are available with the purchase of a separate license for each module.

## SANAKO STUDY EXAMINATION MODULE

The Examination Module is a valuable tool that simplifies the creation and administering of tests. The Examination Module includes a 6-step “wizard” application that assists and guides teachers in the creation of tests. The flexibility of the Examination Module allows teachers to easily vary the types of test questions and to edit any existing tests.

The Examination Wizard allows instructors to design any type of question to test a particular skill or student ability. Teachers may even set the time and outline instructions for tests before administering them, as well as preview entire exams.

The Examination Module provides important follow-up by generating test results for both student and teacher, allowing students to receive immediate feedback on their performance or the teacher may choose not to show the students their results immediately.

Students answer tests easily and conveniently using the Sanako Exam Player and teachers use the regular activity selection procedure in the Study 500 to launch exam files for students. Students may also use the Exam player in stand-alone mode for additional exam practice or review.

## SANAKO STUDY VIDEO LIVE MODULE

The Sanako Study Video Live Module enables teachers to stream video from a variety of analog sources, including DVD and VHS players, or from media files directly to students.

The module consists of a Sanako video streaming hardware server with Sanako software, and a simple browser interface for administration and video stream management. The Sanako Video Live Module is ready to be used once the video streamer is installed on the LAN, and one or more video sources are cabled to the video streamer.

The module allows teachers to display video to students, or to simultaneously send the video material, digitize it and then save the video content as a media file for future use. The teacher can launch a video stream to student screens with a simple click of a Video Stream button in the Sanako Study interface, or by selecting it as a media source in language learning activities.

# INDEX

## A

- Activities 5, 54
  - controls 55
  - how to proceed 54
  - selecting activity 54
  - selecting media source 54
  - self-access 55
  - tutoring 55
  - web browsing 56
- Activity view 8
- Application blocking 45
  - selecting allowed/prevented applications 45
- Autoscan 48

## B

- Blocking applications 45
  - selecting allowed/prevented applications 45
- Bookmarks 63

## C

- Call teacher 68
- Chat 28, 60, 67
  - enabling / disabling 28
  - sending chat message 67
  - sending message 29
- Classroom view 6
- Closing Study 500 Tutor 13
- Collaborate 48
- Communication 8
- Components 3
  - server 3
  - student 3, 58
  - tutor 3
- Copying files 35

## D

- Disabling Internet 47
- Discussion
  - sharing teacher-student discussion to others 17, 20

## E

- Examination module 71
- Extension modules 71
  - examination module 71
  - video live module 72

## F

- Feedback 30
- File areas 34
- File functions 35
- File functions, students 62
- Follow mode 52
- Function buttons, teacher 7
- Functions
  - entire class 19
  - session 19
  - student 17

## G

- Getting Help
  - student 61
  - Tutor 13
  - video tutorials 61
- Getting started 3
- Grouping students 14

## H

- Help menu, student 61
- Help Menu, tutor 13
- Hide student application 44
- Homework 37
  - adding and removing files 38
  - collecting 39, 40
  - collection folder 39
  - for session / all 23
  - for student 18
  - handing in 40, 65
  - saving for student 65
  - student 65
  - viewing 40

## I

- Internet
  - disabling 47
- Isolating a segment 63

## L

- Live feedback 30
- Locking 43, 70

## M

- Marker Tool 22
- Media player 60, 62
- Media sources 54

- Menus 6, 59
- Message 68
- Message from student 16
- Messages
  - student 18
- Monitor 48
- Multiple choice questions 30, 31

## N

- Naming students 12, 15

## O

- OneNote 23
- On-the-Air panel 22

## P

- PC Control
  - session / all 20
  - student 17
- PC control options 42
- player 60
- Player 62
  - bookmarks 63
  - controls 64
  - isolating a segment 63
  - track display 63
- Playlist 33
  - copying 35
  - file areas 34
  - functions 35
- Program launch
  - session / all 43

## R

- Remote Control 48
  - student 17
- Removing students 13
- Repeating a segment 63
- Restarting the Tutor application 13

## S

- Screen Control
  - session / all 20
- Screen Control window 48
  - autoscan 48
  - collaborate 48
  - monitor 48
  - remote control 48
- Screen sharing
  - marker tool 22
  - on-the-air panel 22
  - student to students 23
  - tutor to students 22
- Self-Access 55
- Session tabs 7

- Sessions 5
  - grouping students 14
- Show student application 44
- Shutdown operations
  - session / all 42
- Sidetone 60
- Starting Study 500 Student 11
- Starting Study 500 Tutor 11
- Status display 61
- Student
  - functions 17
- Student application 58
  - interface 58
- Student icons 15
  - arranging 12
  - locked 16
  - message from student 16
  - model student 16
  - moving 12
  - name 15
  - position 15
  - receiving model student screen 16
  - receiving tutor screen 16
  - remove 13
  - student calling teacher 15

## T

- Talk
  - session / all 19
  - sharing discussion 17, 20
  - student 17
- Thumbnails 21
  - in separate window 21
  - thumbnail size 21
- Track display 63
- Tutoring 55

## V,W

- Web browser 50, 69
  - control buttons 50
  - follow mode 52
  - opening for students 51
  - settings 53
  - teacher control 69
- Web browsing 56
- Web policy
  - allow 56
  - prevent 56
- Version Information
  - student 61
- Whiteboard 24
  - tools 27
- Video Live module 72
- Video Tutorials 61
- Volume 60
- Voting 30, 31