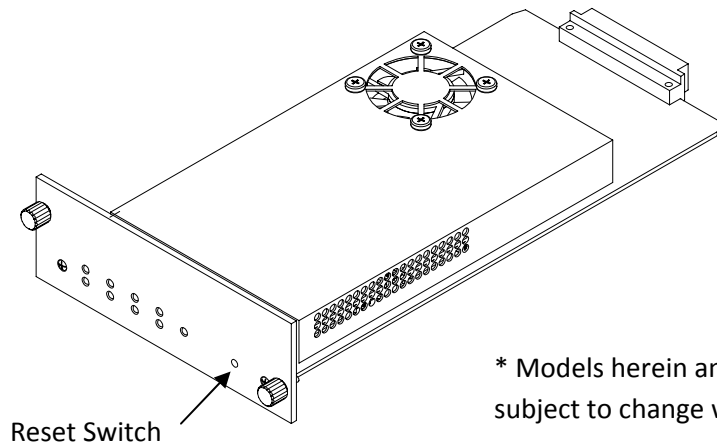


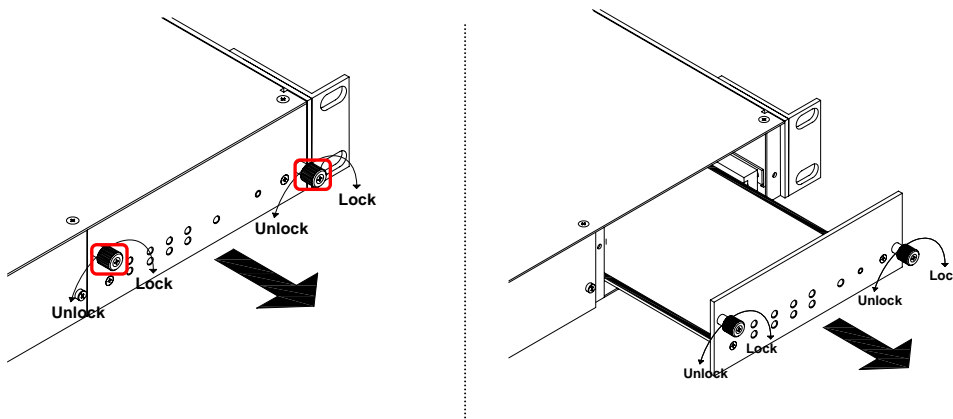
GANZ ZN-RS4012VE(L) Quick User Guide

This manual has been designed to guide you through basic settings of your IP devices, such as installation and configuration for using them.



Step1. Install the IP device

Install the blade to the rack chassis. To see the correct installation of blade, refer to the following image below.



Ejecting a blade

1. Unscrew the two screws.
2. Grasp the blade and pull it out as shown in above figure.
3. Remove the blade from the rack chassis.

Inserting a blade

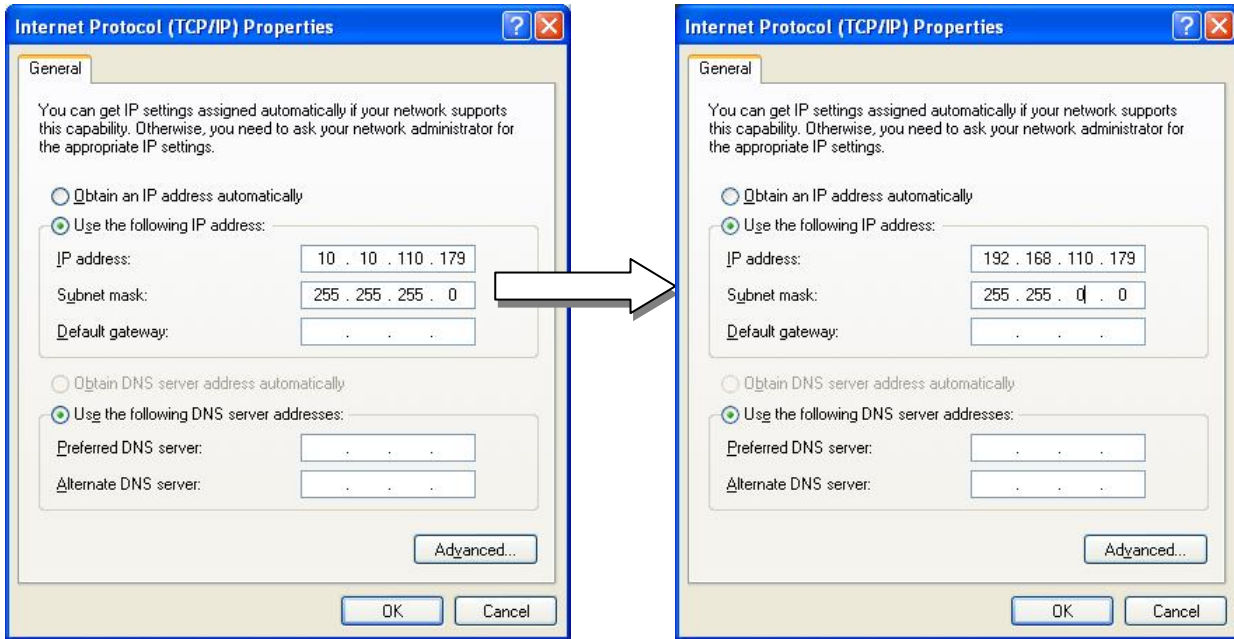
1. Insert the blade into the rack chassis.
2. Fasten the screws.

Step2. Set up network environment

The default IP address of your IP device is 192.168.XXX.XXX. You can find the available IP address from the MAC address of your device. Please make sure the device and your PC are on the same network segment before running the installation. If the network segment was different between your PC and the device, change your PC's settings as below.

IP address : **192.168.xxx.xxx**

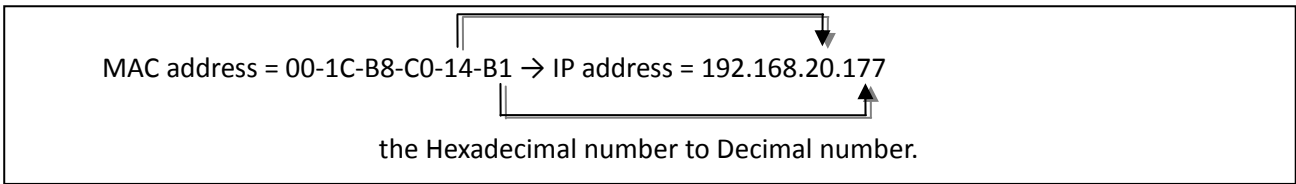
Subnet mask: **255.255.0.0**



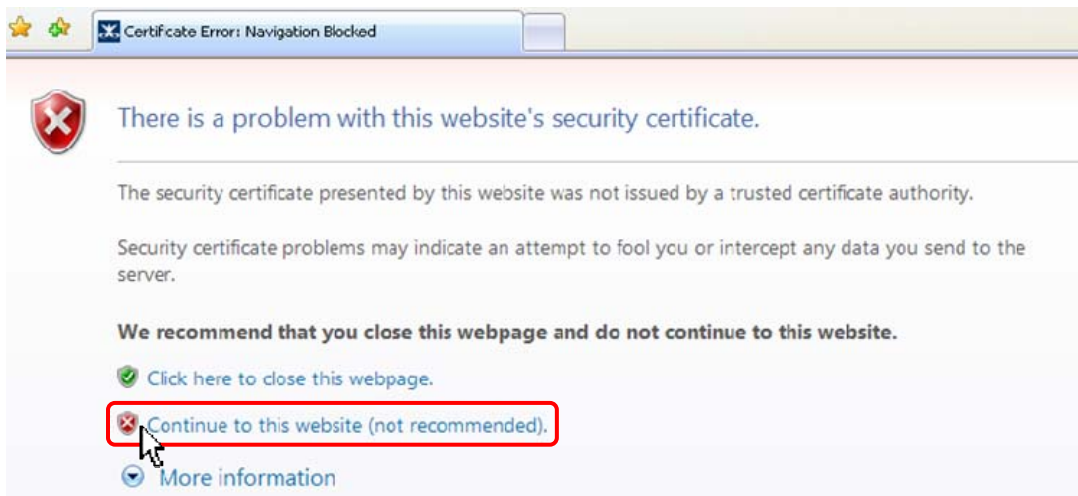
STEP3. View video on web page

View the live video on a web page using your IP device and its IP address. To have the correct IP address ready and use it on a web page:

1. Convert a MAC address to an IP address.
(The MAC address is attached on the side or bottom of the device.)



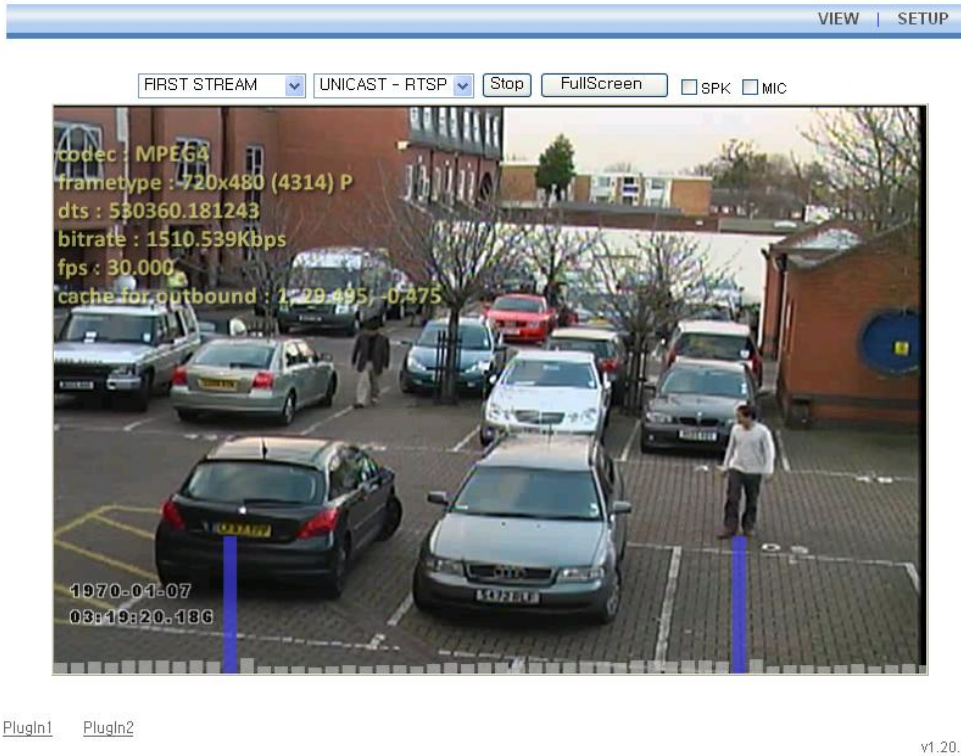
2. Open a web browser and enter the IP address of the device.
3. Click **Continue to this website (not recommended)** as below.
(The explanation and captured images at this manual are mainly on the basis of Internet Explorer 7.0)



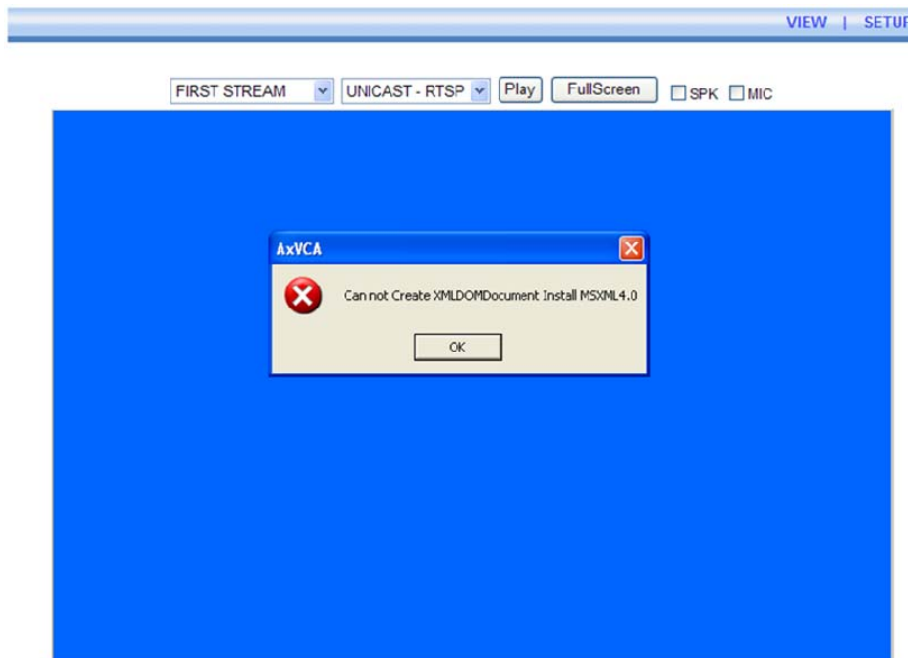
4. Click **pop-up blocked** and install the ActiveX control as below. You need to install the ActiveX for displaying the images.



5. Wait for a few seconds while the web page loads. The live video is displayed as below.



6. If the live video is not displayed and **“Can not Create XMLDOMDocument Install MSXML4.0”** message is shown as below, please download and Install from the link below.
<http://www.microsoft.com/downloads/details.aspx?familyid=3144B72B-B4F2-46DA-B4B6-C5D7485F2B42&displaylang=en>
(VCA Library requires MS XML 4.0 library which is an xml parser made by Microsoft.)



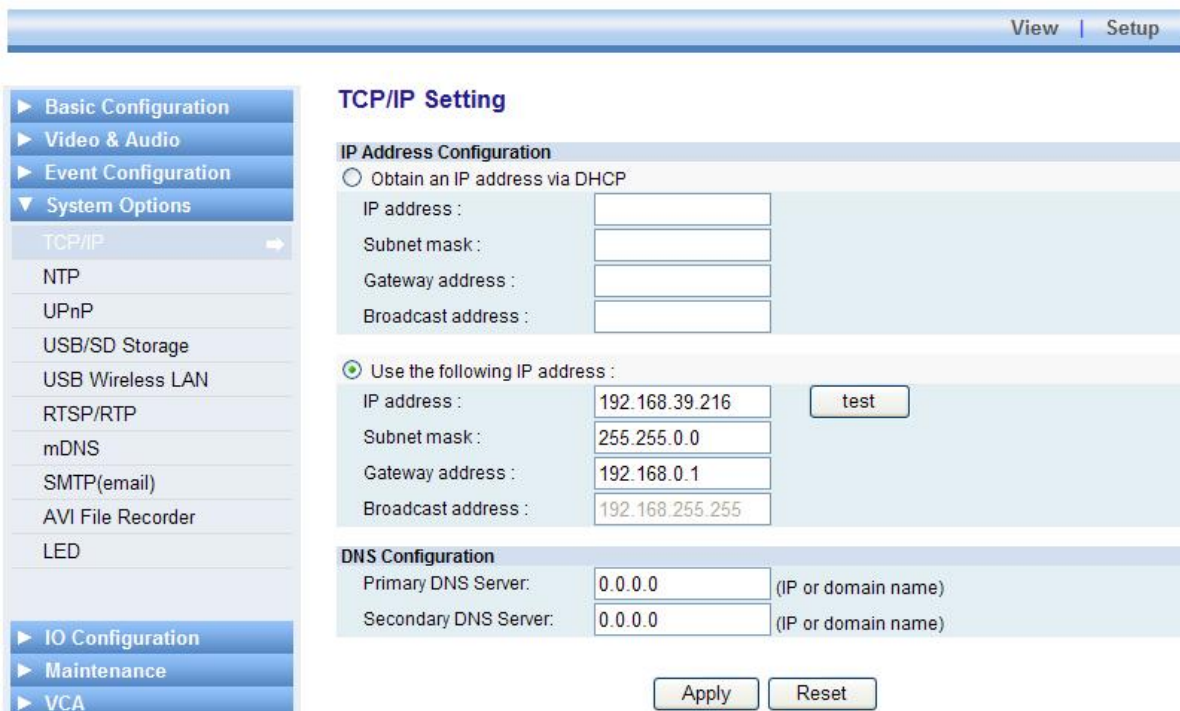
Step4. Setting IP Address

To set up the Network configuration:

1. Click **Setup** on the upper right of the web page. The login page is displayed as below.
2. Enter the default user name (root) and the default password (pass), and then select **OK**.



3. Click **System Options**, and then select **TCP/IP** from the drop-down menu.



To change the IP address, please make sure to check and have the correct Subnet mask and Gateway ready. To use DHCP, select **Obtain an IP address via DHCP**.

To learn how to set up the web page for advanced configuration, refer to the Web Page User's Manual, which is available on the SDK at the following path.

{SDK root}\DOC\

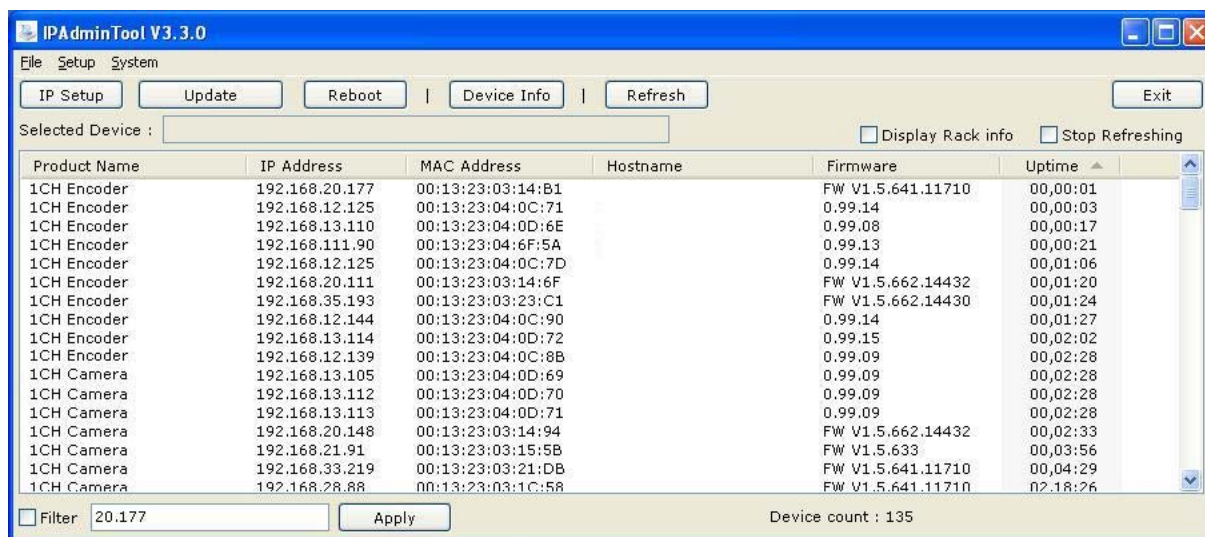
Advanced setup (ZNS-GIT IPAdminTool)

ZNS-GIT IPAdminTool is a utility program for IP products. Following list shows a part of features that ZNS-GIT IPAdminTool provides.

- Configure IP address, Subnet mask and Gateway
- Shows network related information such as MAC address
- Updates firmware
- Reboots the device

ZNS-GIT IPAdminTool is provided with SDK at the following SDK path.

```
{SDK root}\BIN\TOOLS\AdminTool\
```



Rebooting

Reset can be carried out as follows:

1. While the device is in use, press and hold the Reset.
2. Release the Reset button after 3 seconds.
3. Wait for the system to reboot.

Resetting to the Factory Default Settings

This will reset all parameters, including the IP address, to the Factory Default initialization.

To perform the Factory Default settings:

1. Disconnect the power supply from the device.
2. Connect the power to the device with the Reset button pressed and held.
3. Release the Reset button after 5 seconds.
4. Wait for the system to reboot.

More Information

To learn more about using other features of your devices, refer to the manual, which is available on the SDK at the following path.

```
{SDK root}\DOC\
```