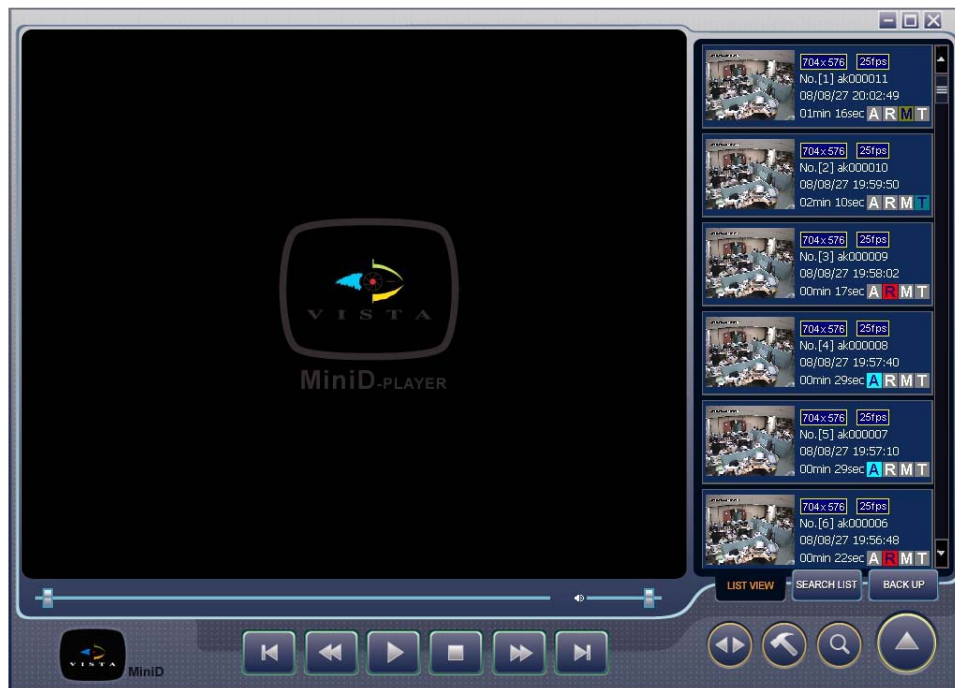




# *MiniD 400 Player User Manual*



*\* The contents of the manual can be modified without notice*

<b>Chapter 1: Required Specification of PC and OS</b>	
PC Requirements	<b>03</b>
<b>Chapter 2: Supported O/S</b>	
Supported Operating Systems	<b>03</b>
<b>Chapter 3: Program Installation</b>	
How to Install the Vista MiniD 400 Player	<b>03</b>
<b>Chapter 4: How to use VISTA MiniD 400 Player</b>	
<b>1. Player Screen</b>	<b>06</b>
<b>2. Open Files</b>	<b>07</b>
2.1 File Open	<b>08</b>
2.2 Directory Open	<b>09</b>
2.3 Option	<b>09</b>
2.4 Load SDR2 Files	<b>10</b>
2.5 SDR2 File Play & Play Size Control	<b>10</b>
<b>3. File Index Tool</b>	<b>11</b>
<b>4. AVI Convert</b>	<b>13</b>
<b>5. SDR2 File Search</b>	<b>14</b>
<b>6. SDR2 Backup</b>	<b>15</b>

## Chapter 1: Required Specification of PC and OS

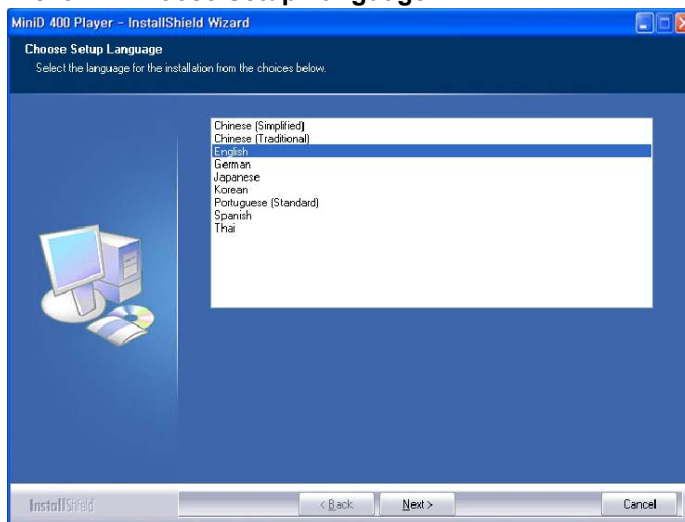
Item	Recommended Specifications
<b>CPU</b>	Above Intel Pentium 4 CPU 3.00GHz
<b>Main Memory</b>	1GB
<b>O/S*</b>	Windows 2000, Windows XP SP3, Windows Vista SP1
<b>DirectX</b>	Above DirectX 9.0C
<b>Resolution</b>	1,024 X 768 / 1,152 X 864
<b>Network</b>	100Base-T Ethernet

## Chapter 2: Supported O/S

- ✓ Windows 2000 Professional (Korean OS, English OS, Japanese OS)
- ✓ Windows XP Professional / Windows XP Home Edition (Korean OS, English OS, Japanese OS)
- ✓ Windows 2000 Server (Korean OS, English OS, Japanese OS)

## Chapter 3: Program Installation

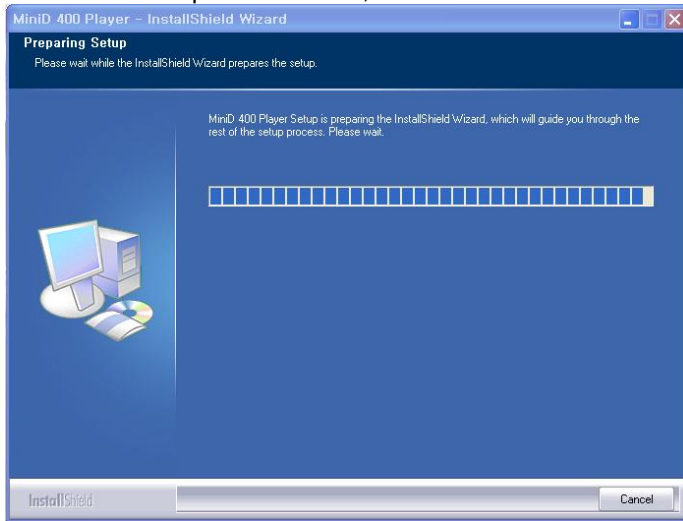
**Pic. 3—1 Choose Setup Language**



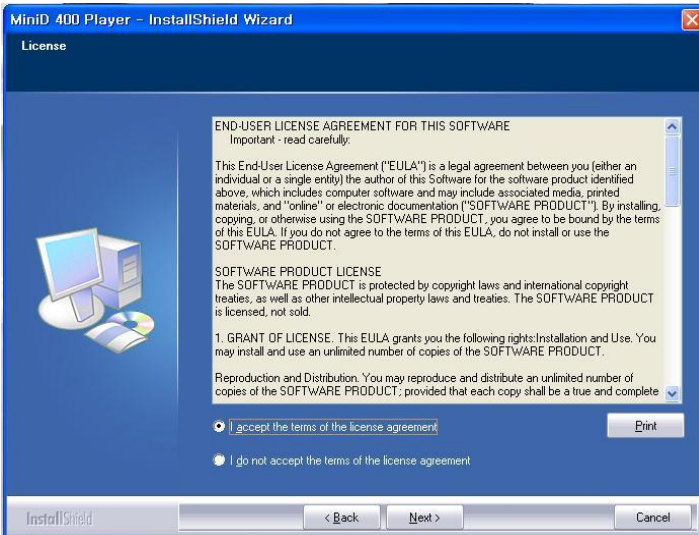
1. Insert the installation CD into your PC.
2. Click a setup file and the install shield wizard Window will appear.
3. Select Language.
4. Click 'Next' Button.
5. Then select the folder where the program is to be installed. The route is changeable using "Browser".
6. To install in the default folder, click 'Next' and go to the next step.

### Pic. 3—2 Preparing Setup

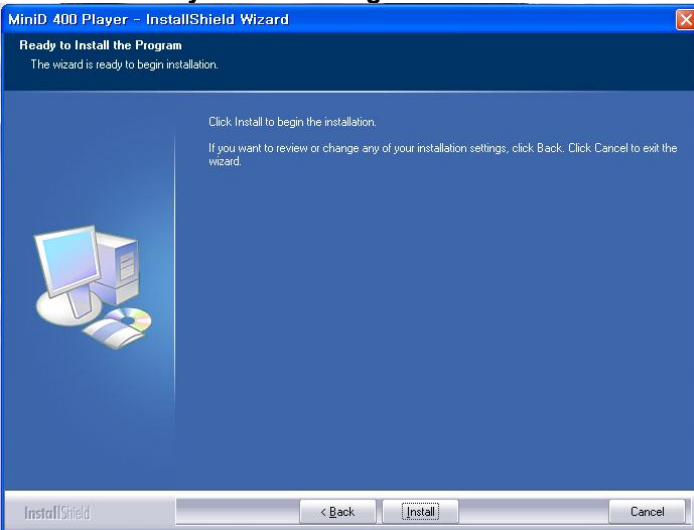
Read and "Accept" the License, then Click 'Next' to start installation



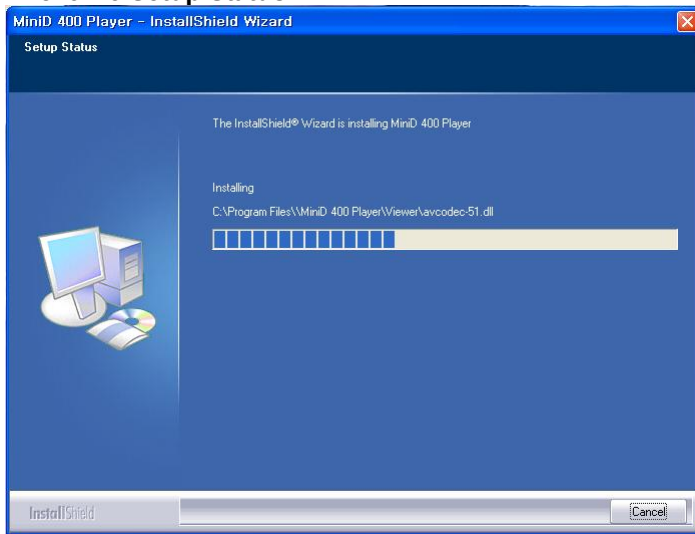
### Pic. 3—3 License



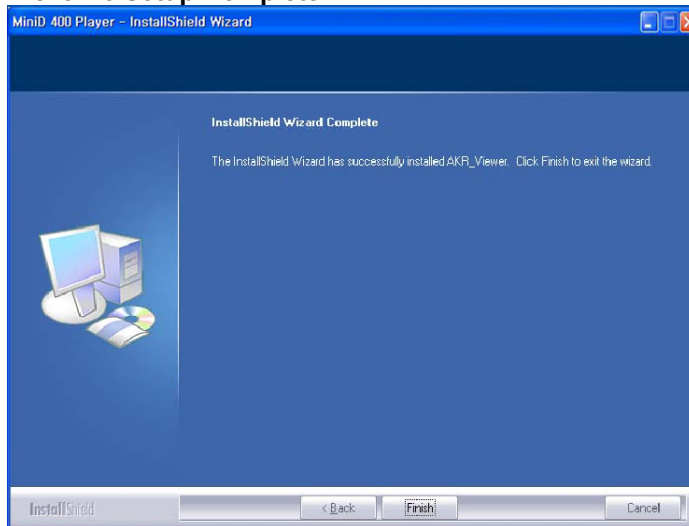
### Pic. 3—4 Ready to Install Program



**Pic. 3—5 Setup Status**



**Pic. 3—6 Setup Complete**

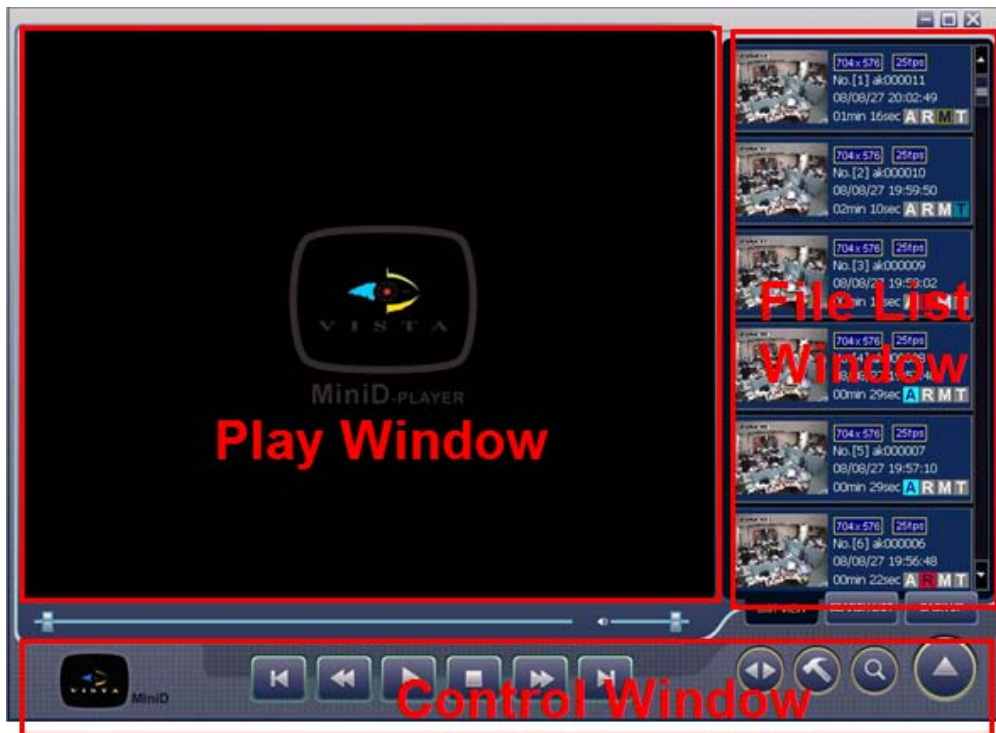


When installation is completed, click 'Finish' Button

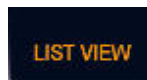
## Chapter 4: How to use VISTA MiniD 400 Player

Upon installation, the Vista MiniD 400 Player's icon will appear on the desktop of your PC. Double-click the icon to run the Program, this will run as shown in [Pic. 4—1] below.

### 4.1 Vista MiniD 400 Player Screen



Open, select File or directory.



Display files users open manually.



**SDR2 file index renew button.**



'SDR2' files backup button.

Convert button: Converts a 'SDR2' file to an AVI file.



Slide bar for displaying recorded files.

**SEARCH Button**



Mute, Sound control bar.



1 2 3 4 5 6

- ① Move to previous frame
- ② Rewind
- ③ Play/Pause
- ④ Stop
- ⑤ Fast Forward
- ⑥ Move to Next frame



Display search result.



**Pic. 4.1-2. Movie List**

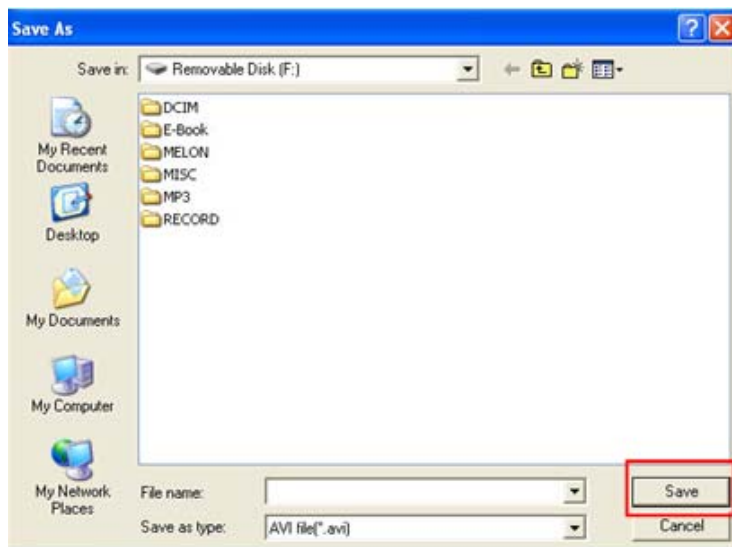
## MOVIE LIST

- Thumbnail: The first frame of is used as thumbnail image.
- File Property Icon
  - ◆ A: Activated when the SDR2 file is generated by sensor-trigger.
  - ◆ R: Activated when the SDR2 file is generated by emergency
  - ◆ M: Activated when the SDR2 file is generated by motion event
  - ◆ T: Activated when the SDR2 file is generated time event
- File Name
  - ◆ Display file name
- File Generation Time & Duration Time
  - ◆ File generation time is displayed as 'YY/MM/DD hh:mm:ss'.
  - ◆ Duration time is displayed as 'sec'.



'Save As.' pop-up window opens when you right mouse click over a selected video file.

**Pic. 4.1-3. Save As option**



- Select the location for the file to be saved.




## 4.2 Open (File / Directory)

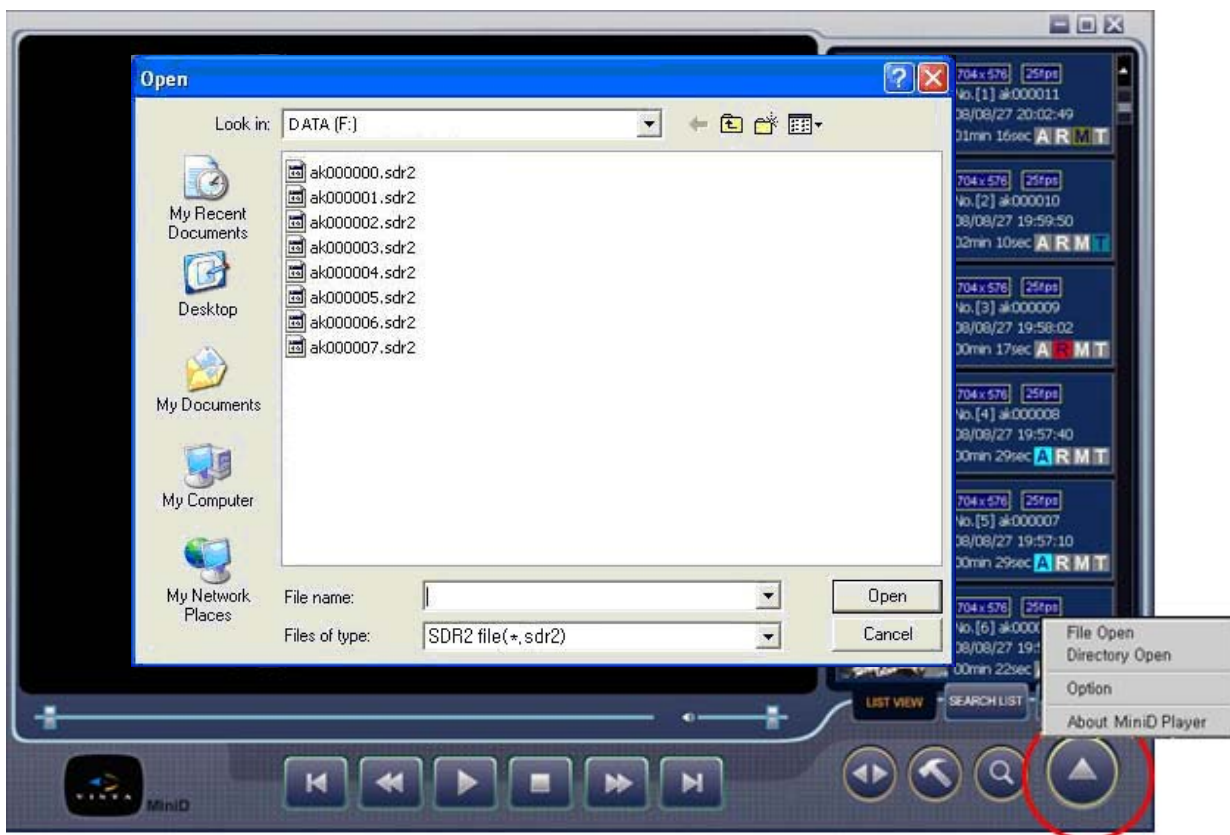


File Open: To load individual recorded file  
Directory Open: To load all the files from one directory.  
Option: To Change the Language  
(English, German, Dutch, Spanish, French)  
About MiniD 400 Player: To view MiniD 400 Player version.

### 4.2-1 File Open

To open a file you must first.

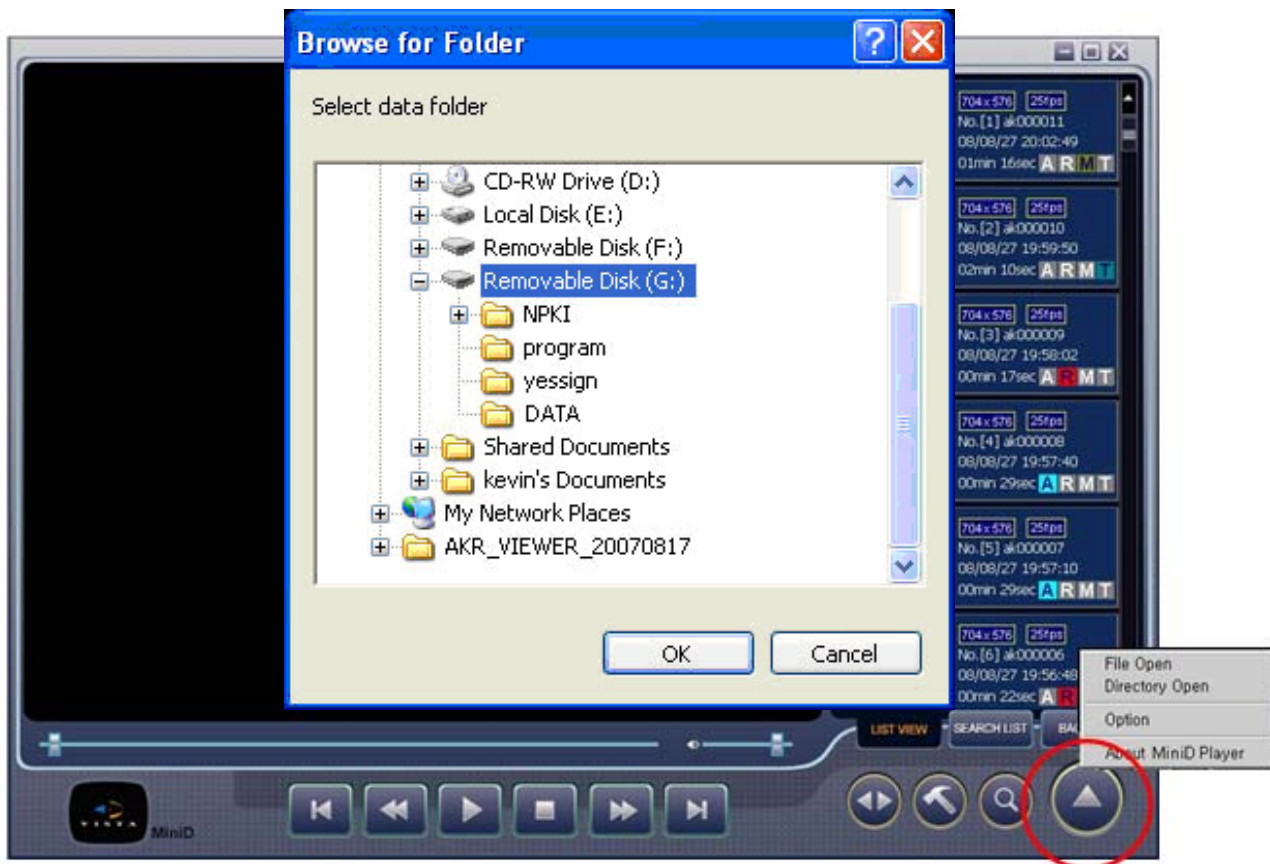
1. Remove the SD card from the MiniD-400 DVR.
2. Insert the SD card into the SD card reader on your PC.
3. To open a "file" Click the  button and select "File Open".
4. Choose an ".sdr2" file from your removable drive or a folder on the pc with a previously saved file.
5. If you wish to view / load the entire directory, see "Open Directory" below.





## 4.2-2 Directory Open

To open all the files in a folder/Directory “Click” on “Directory Open” then navigate to the “DATA” folder and click “OK”. This loads all the files on to the “File List Window”.



Pic. 4.2-2 Directory open

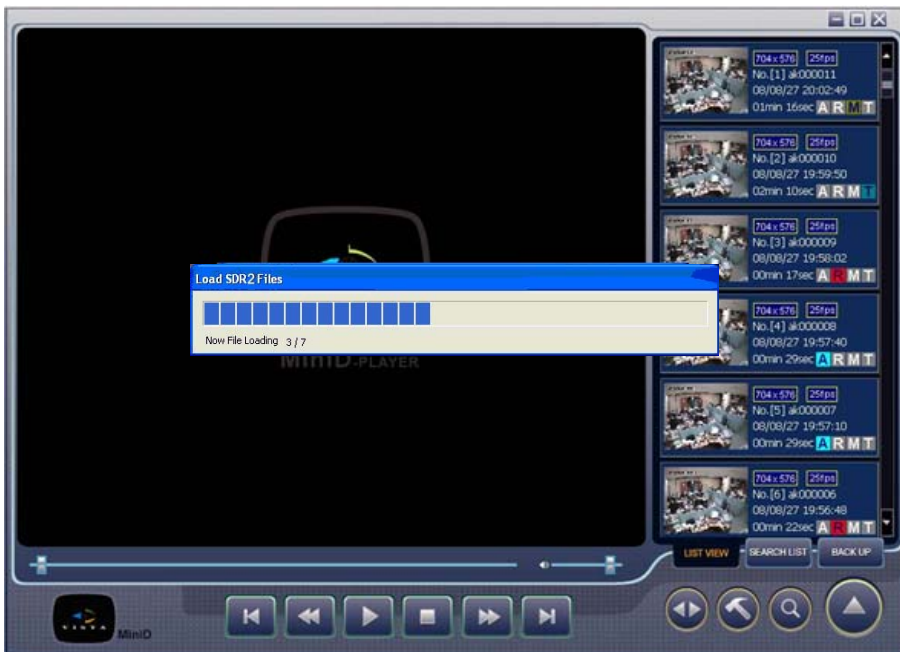
## 4.2-3 Option

- Select the language (English, German, Dutch, Spanish, French)
- English is the default language



- Pic. 4.2-3 Language Setup

## 4.2-4 Load SDR2 Files



Pic. 4.2-4 Load SDR2 Files

## 4.2-5 SDR2 File Play & Play Size Control



Highlight the file to play then click the “Play” Button. Or double click the “Selected file”.

### 4.2-5-1 Display

- Display Menu opens by clicking the right button of the mouse...
- 1:1
- Video is displayed in its actual resolution.
- Fit to Display Area
- Displaying size of video is changed to fit to the display area (Movie ratio is ignored).
- Full Screen
- Video is displayed as full screen (Movie ratio is ignored)

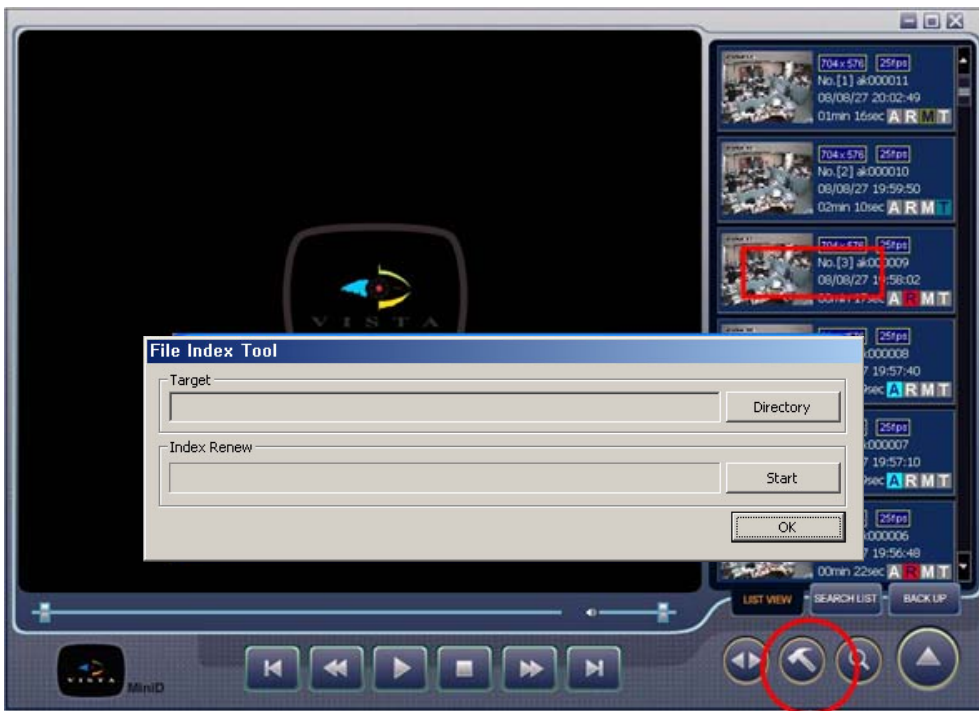
### 4.2-5-2 Useful features

- **Print Current Screen**
  - User can print out the displaying video with clicking of this button.
- **Capture Current Screen**
  - User can capture the displaying video in JPEG format, using this feature.

### 4.3 File Index Tool



The 'SDR2 File Index tool' makes a file list for the recorded SDR2 files in SD card. This is recommended when files are copied back to the SD card.



To use the "File Index Tool" click on the "Hammer" button. The 'SDR2 FILE INDEX RENEW tool' has the same function as 'SUB MENU>FILE INDEX RENEW' provided as OSD menu in MiniD- 400.

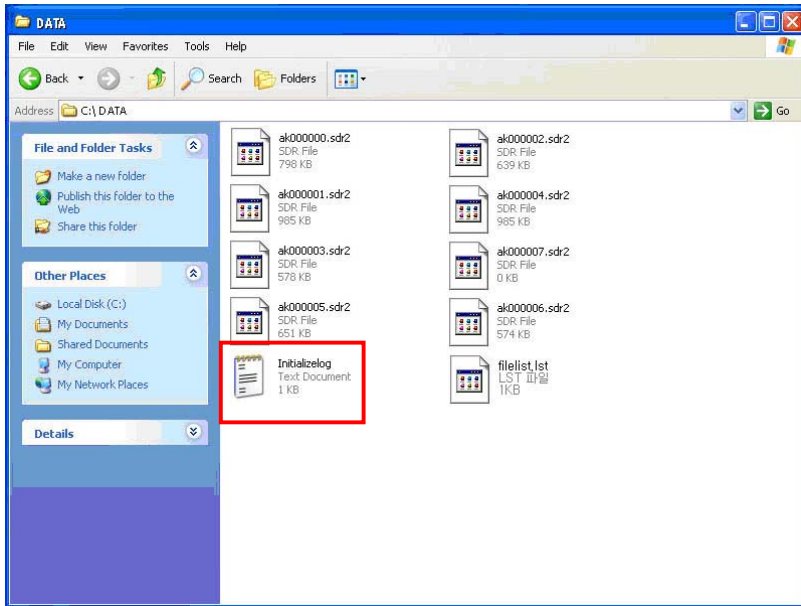
The index file is automatically generated and stored in the SD card when inserted into VISTA MiniD-400. If the index file does not match the files actually stored in the SD card, users can synchronize the index file list with the actual file list. While synchronizing, the process percentage is displayed on completion the value returns to 'NO'.

Pic. 4.3-1 SDR2 Initialize Tool

**N.B.**  
1. The initializing process should be done on 'DATA' folder only. If the process is done on other folders, the dialog message opens as shown in [Pic. 4.3-2].



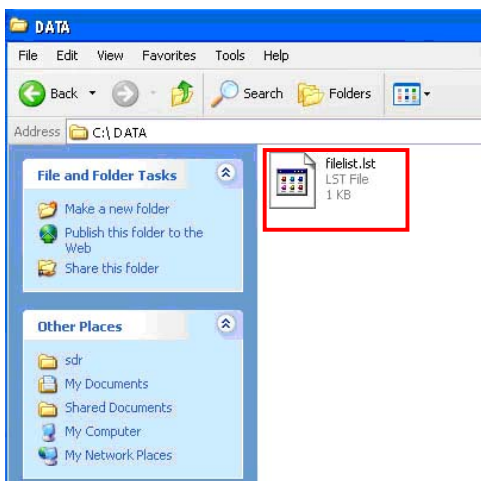
Pic. 4.3-2 Not found 'DATA' folder Message



Once the Confirm 'file index renew.txt' File

2. 0KB recorded files in the 'SDR2' folder is automatically erased during 'file index renew' process. The erased information is stored in 'Initializelog.txt' file.


**Pic. 4.3-3 Confirm 'file index renew.txt' File**

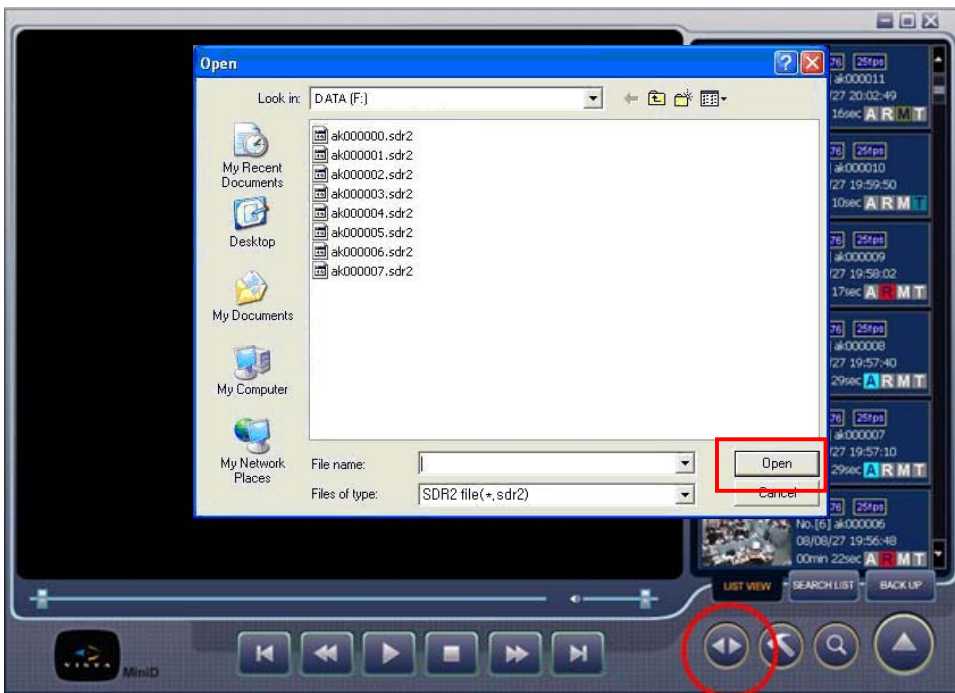


3. 'filelist.lst' file is stored in 'SYS' folder which is automatically generated after 'file index renew' process.

**Pic. 4.3-4 Confirm 'filelist.lst' File**

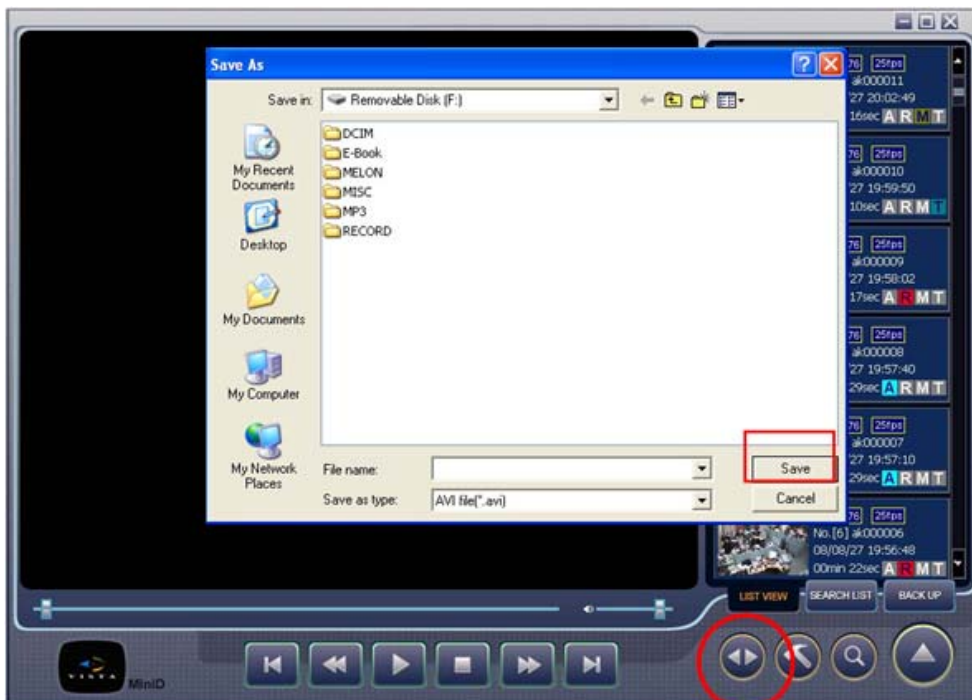
## 4.4 AVI Convert

To convert an “SDR2” file to an “AVI” to played back in any PC. Click the  “AVI Conversion” button.

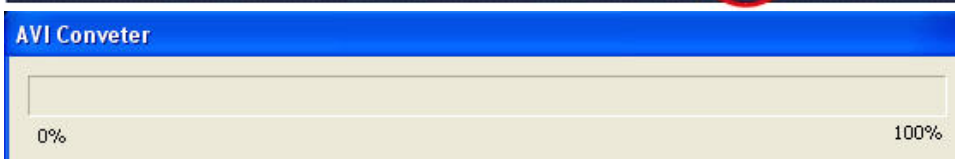


Find the file for conversion and select “Open”.

Pic. 4.4-1 Select File to convert to ‘AVI’ format



Once the file is selected you are asked to input a name for the AVI file. Then select “Open”.

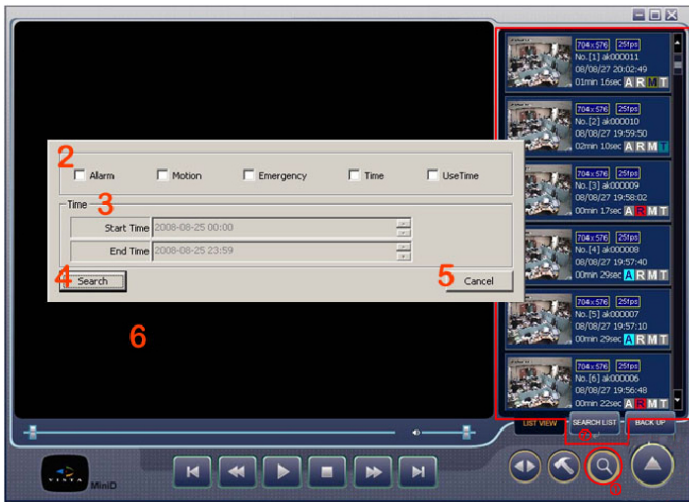


While the conversion is in progress, the “Converter” bar is displayed. This disappears on completion.



## 4.5 File Search

To search for specific video clip click on the search  button and select the relevant search criteria, then click on “Search”. The results are listed in the “Search List Window”. To play a selected clip, either double click the selected clip, or click the selected clip and then the “Play”  button.



1. Click 'Search' button to open and then 'search window' pops up as shown in [Pic. 4.6].
2. Check search conditions.
3. Select time period. The time option is activated only when you select 'Use Time' as search condition.
4. Select the folder in which you want to store merged files.
5. Click the 'search' button.
6. Search result is listed in 'Search List' windows.
7. To go back to 'List View', click 'List View' Tab.

**Pic. 4.6 File Search**



## 4.6 SDR2 Backup

To back up/Copy your files from the SD card, Click on the **BACK UP** button.



The Backup screen appears. You can;

- A. Transfer all files.
- B. Transfer individual files.
- C. Remove individual files.
- D. Remove all files.
- E. Choose the folder to save the files via the "Target Files" Directory.
- F. Once selected Click "Backup"
- G. The backed up files will appear in the "Backup Results" window.

NORBAIN SD LTD  
210 Wharfedale Road,  
Winnersh Triangle,  
Wokingham,  
Berkshire  
RG415TP