



Operating Instructions

easyScan E-STM

Version 2.0

TEXT & LAYOUT: KARIN HOOL, R. SUM, PIETER VAN SCHEDEL
ENGLISH: VICKY CONNOLLY

'NANOSURF' AND THE NANOSURF LOGO ARE TRADEMARKS OF NANOSURF AG, REGISTERED AND/OR
OTHERWISE PROTECTED IN VARIOUS COUNTRIES.

© JUNE 2003 BY NANOSURF AG, SWITZERLAND, PROD.:BT00655, R 0.2

Table of Contents

Introduction	4
What is STM?	4
Scanning with the E-STM	5
(Un)packing and Installation	8
Unpacking the instrument	8
Hardware Installation	9
Software installation	11
System requirements	11
Installation Procedure	11
Simulated microscope	14
Preparing for Measurement	15
Preparing and installing the STM tip	15
Preparing the sample	17
Installing the sample	18
First Measurements	19
Starting the microscope	19
Approaching the tip	20
1. Coarse approach by hand	20
2. Fine approach by piezo motor	21
3. Automatic approach	22
Start measurement	23
Adjusting the sample's tilt coordinates	24
Achieving atomic resolution	26
Snapshots of images	29
STM Measurement modes	29
Judging the quality of the images	30
The graphite surface	32
Measuring Gold	33
Finish measuring	35
Turning off and storing the instrument	35
Maintenance	37
Scan head	37
Scan electronics	38
Problems and Solutions	39
Technical Data	43

Introduction

This manual gives instructions on how to set up and use your Nanosurf easyScan E-STM system. The aim is to help people who don't have a good knowledge of physics to get pictures of atomic resolution easily. This introduction chapter gives some general information on the scanning tunneling microscopy technique, and its implementation in the easyScan STM. The next chapter, *(Un)packing and Installation*, should be read when installing your easyScan system. The chapters *Preparing for Measurement* and *First Measurements* should be read by all users, as they contain useful instructions for your everyday measurements. The other chapters give more information for advanced users. Those who need a more detailed description of the functions of the easyScan software should refer to the *Software Reference* manual.

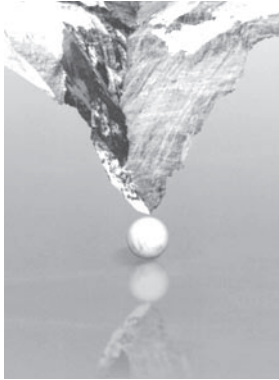
What is STM?

Microscopy is one of the most exciting scientific techniques. The insight into small dimensions has led to a new understanding of the structure of materials and forms of life.

With the help of the scanning tunneling microscope (STM) it is possible to look into the fascinating world of the atoms. This completely new microscopy technique works without focusing elements and features atomic resolution (laterally and vertically).

The Scanning Tunneling Microscope was developed by Gerd Binnig and Heinrich Rohrer in the early 80's at the IBM research laboratory in Rüslikon, Switzerland. For this revolutionary innovation Binnig and Rohrer were awarded the Nobel prize in Physics in 1986.

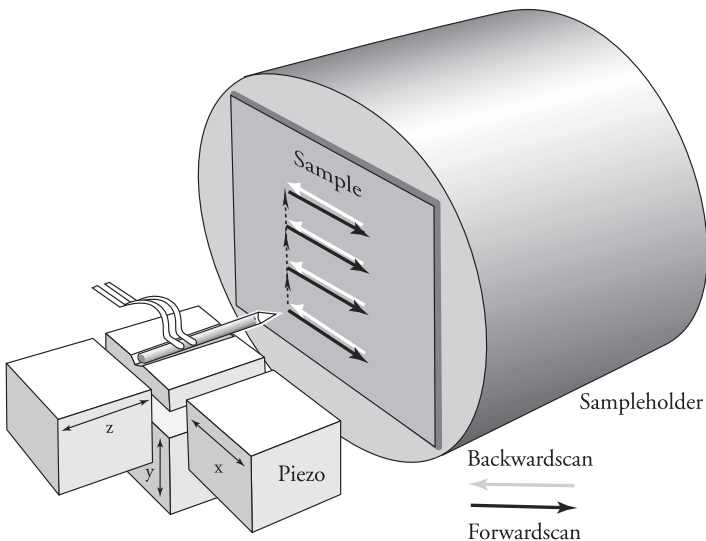
In the STM, a small sharp conducting tip is scanned across the sample's surface, so close that the so-called 'tunneling current' can flow. With the help of that current the tip-surface distance can be controlled very precisely. Therefore an enormous resolution is achieved so that the atomic arrangement of metallic surfaces can be 'probed'.



To be able to get such excellent pictures of atomic resolution is almost incredible, considering that the size of the atom in relation to the tip, is that of a golf ball to a mountain!

Scanning with the E-STM

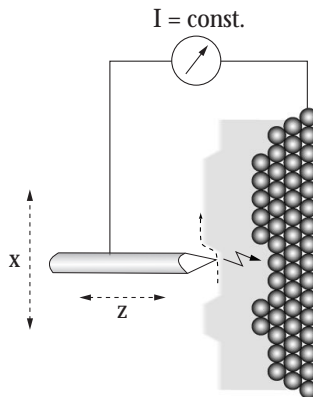
In the E-STM, two tiny springs clamp a platinum-iridium tip onto a platform which can be moved in three dimensions using piezo-crystal translators that are driven with sub-nanometer precision.



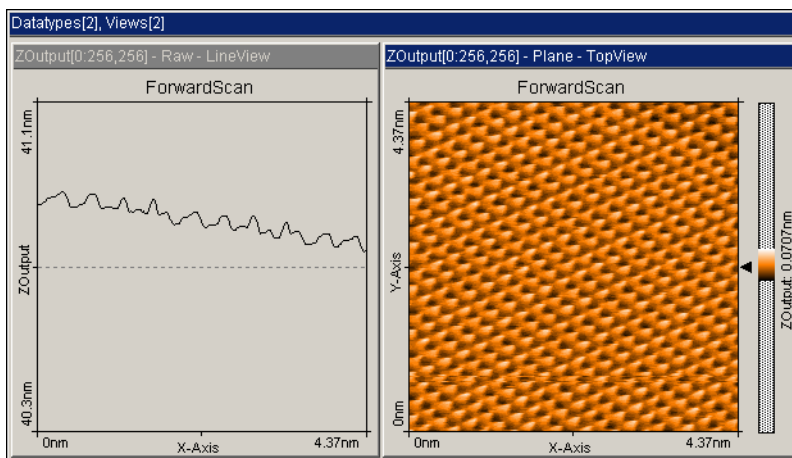
The sample to be examined approaches the tip within a distance of 1 nanometer ($1\text{nm}= 1 / 1\,000\,000\,000\text{ m}$). Classical physics would prohibit the appearance of electrons in the small gap between a tip and a sample, but if a sharp tip and a conducting surface are put under a low voltage ($U\sim 0.1\text{V}$) a very small tunneling current ($I\sim 1\text{nA}$) may nevertheless flow between tip and sample. This tunneling current is due to a quantum physics effect.

The strength of the tunneling current depends exponentially on the distance between the tip and the sample (usually referred to as z -distance). This extreme dependence on the z -distance makes it possible to measure the tip-sample movement very precisely. One of the three piezo crystals, the z -piezo, can now be used in a feedback loop that keeps the tunneling current constant by appropriately changing the z -distance.

To obtain an image of the sample, the tip is scanned using the x - and y -piezo crystals. The feedback loop will now let the tip follow the structure of the sample's surface. A height image can now be made by recording the position of the z -feedback loop as a function of the x - y piezo position. This 'landscape' (or topography) of the atomic surface is then drawn on the computer screen line by line.



The feedback loop maintains a constant tunneling current between the tip and the sample during motion in the x -direction by changing the z -direction (viewed from top)



Scan-images of graphite as views from the 'side' and the 'top'

The sample can also be scanned in a second mode: When the feedback loop is slowed down very much (P-Gain=0, I-Gain=2), the tip scans at a fixed distance from the sample (constant height mode). This time the variations in the tunneling current are measured and drawn line by line on the computer screen. However, this mode only works when the sample is atomically flat, because the tip would otherwise 'crash' in to the sample

What is so special about the Nanosurf easyScan E-STM?

The E-STM was designed to allow people without training as a physicist to do experiments in the world of atoms. Its design is compact, simple and comfortable to operate. With the E-STM, it is possible to do any STM experiment which can be carried out in air. The special sample approach system allows simple handling of samples and tips, whilst at the same time providing maximum stability of the tip-sample distance. All functions can be carried out using a computer and the E-Line software.

(Un)packing and Installation

This chapter describes the installation of the Nanosurf easyScan E-STM.

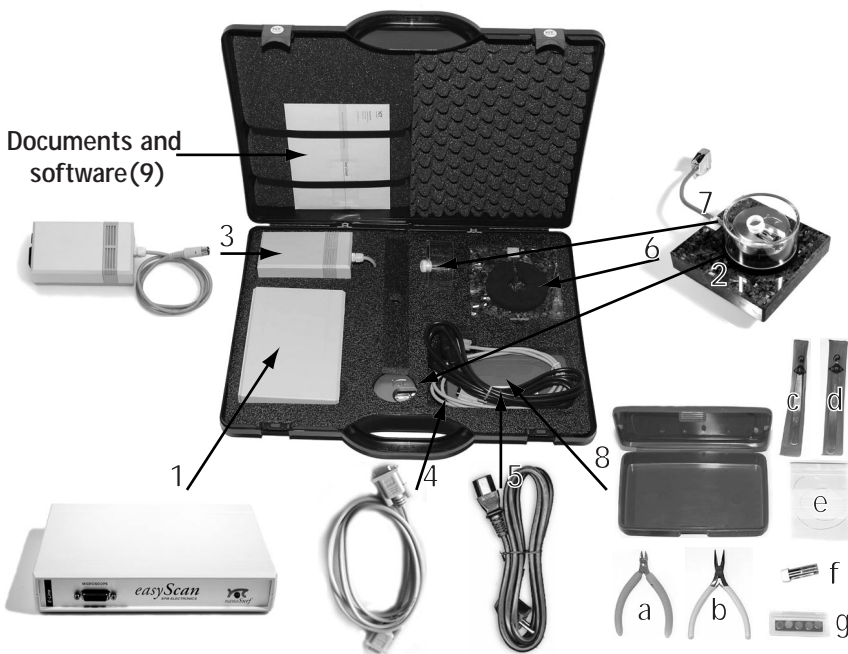
Important!

To enable measurements of atomic resolution to be made the following precautions must be taken to keep equipment dust and grease free:

- Never touch either the wire for tips (figure *components, 8 e*), the sample (*8 g*) nor the open part of the STM scan head (*2*) with your fingers.
- Only touch the sample holder (*8 f*) at the black plastic end.

Unpacking the instrument

Before unpacking the instrument suitcase, check for the following items:



Components: The easyScan DFM system

- 1 - easyScan E-SPM electronics
- 2 - STM scan head
- 3 - Power supply LPS-1
- 4 - RS232 cable between computer and control electronics
- 5 - Mains cable
- 6 - Vibration isolation platform
- 7 - Magnifying cover with 10x magnifier
- 8 - Tool set, containing **a**: wire cutter **b**: half-round pliers, **c**: pointed tweezers, **d**: rounded tweezers, **e**: 30 cm Pt/Ir 0.25mm wire for tips, **f**: sample holder, **g**: sample set: HOPG (graphite), gold thin film, three empty sample supports
- 9 - easyScan E-Line CD, containing the easyScan E-Line software
 - this manual
 - software reference manual
 - a test sheet and a sheet with the calibration information.
 - a Case for storing and transporting the instrument

Additionally, the following material is needed that is not included with the contents of delivery:

- A computer that meets the requirements described in the section *Software Installation*.
- Solvent to clean the tools (e.g. ethanol, acetone)

Hardware Installation

Important!

- Please check that the mains voltage corresponds to that of the power supply (3).
- Make sure that your mains connection is protected against excess voltage.

Choose a steady table where you can work undisturbed. To ensure the faultless operation of the STM it has to be kept away from vibrations, heat emission and air current.



- Put the STM scan head (2) onto the vibration isolation platform (6). Fix the scan head cable under the strain relief clip.
- Connect the STM scan head to the easyScan E-SPM electronics (1).
- Make sure your computer is turned off. Then connect the control electronics to a free serial port (or RS232, or COM Port) on your computer with the RS232 cable (4). If you are using the 'USB adapter for easyScan electronics', DO NOT connect it now.
- Connect the power supply (3) to the E-SPM electronics, and plug in the mains cable (5).
- Finally turn on the power supply.

Now the E-SPM electronics and the microscope are connected, and the LED on the E-SPM electronics flashes.

Software installation

System requirements

The System requirements for the easyScan E-Line software are:

- PC with a Pentium 133 MHz processor or higher
- a free COM-Port or USB port.*
- Windows 95 or higher
- 8 MB RAM or more (16 MB recommended)
- graphics adapter with 800 x 600 resolution and 16-bit colours ('high color') or better (resolution of 1024 x 768 recommended)

* The Nanosurf 'USB Adapter for easyScan' option must be acquired to use the USB port.

Installation Procedure

- Turn on your computer and start Windows.

Do not run any other program while installing the scan software.

- If you are using the USB Adapter for easyScan, install it first according to the instructions included with the adapter.
- Insert (the backup copy of) your E-Line CD.

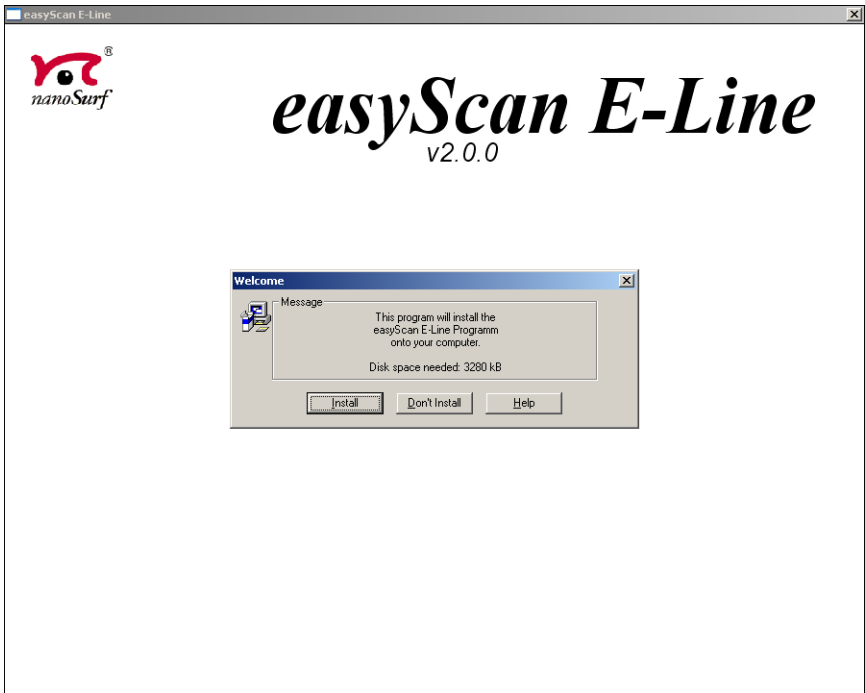
Windows NT/2000/XP

- Make sure you have administrator privileges before installing the software.

All operating systems

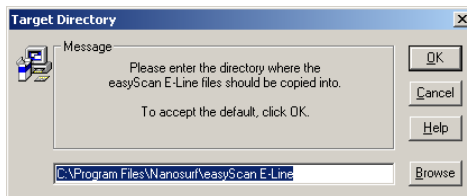
- Start the 'setup.exe' program on the CD.

The following screen will now appear:

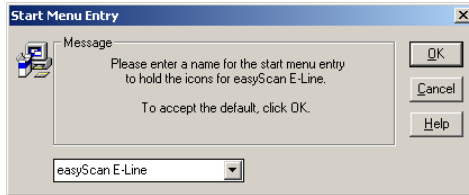


- Select the button 'Install', to install the data acquisition program 'easy-Scan' on your computer.

Setup will ask for the directory in which the program files are to be copied:

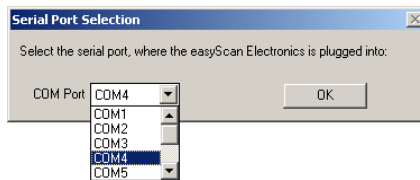


- Put them in the proposed directory, unless the 'Program Files' directory has a different name in your language of the Windows operating system. Afterwards setup will ask for the start menu entry or program group in which 'easyScan' is to be placed:



- Accept the proposed name by clicking 'OK' or type another name.

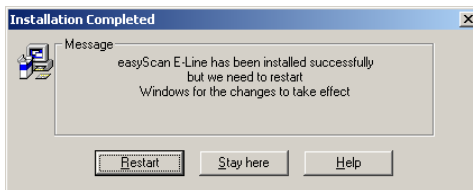
The installation setup will now ask for the 'COM-Port':



- Select the serial port to which you have connected the E-SPM electronics
(See section *hardware installation*, figure *components, 1*)

The setup program will start copying files onto your hard-disk.

After successful installation you will get this confirmation:



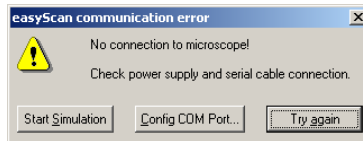
Important!

The E-Line software CD delivered with the instrument contains calibration information specific to your instrument, therefore you should therefore always keep (a backup copy of) the CD delivered with the instrument.

Simulated microscope

You can start the easyScan software without having the microscope connected to your computer. We recommend using this simulation to explore the easyScan-system (measurements and software) 'off-line'.

When the simulate microscope mode is started, the following dialog box appears:



By clicking 'Start Simulation' a simulation of the microscope is started. This imitates most of the functions of the real microscope. The sample is replaced by a mathematical description of a surface. You can now follow the instructions in the chapter *First measurements*.

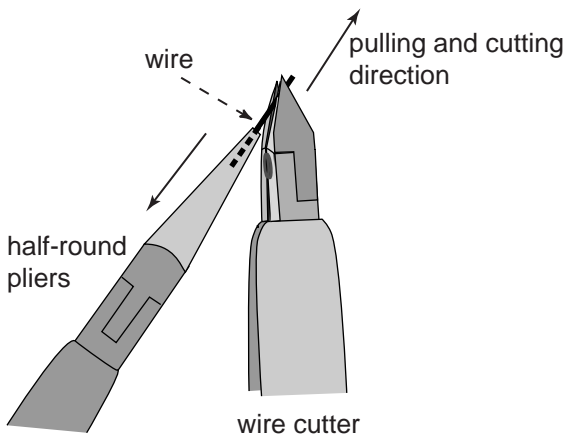
- To explore the system in the 'Simulate Microscope' mode with the microscope connected, activate it in the menu 'Options'.

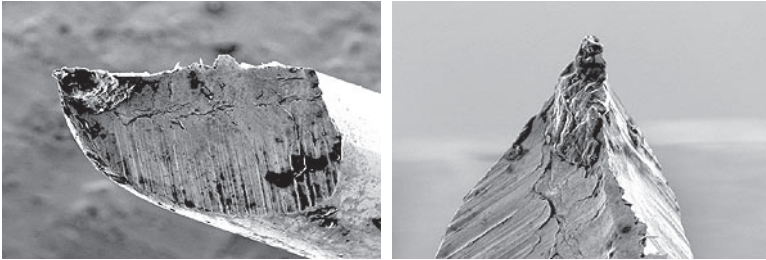
Preparing for Measurement

Preparing and installing the STM tip

The STM tip is prepared and installed by you. This is the most difficult part of your preparations. It usually needs patience and some practise to get the first good tip. Only an accurately cut tip enables optimal measurements. Therefore, cutting and installing should be carried out with great care.

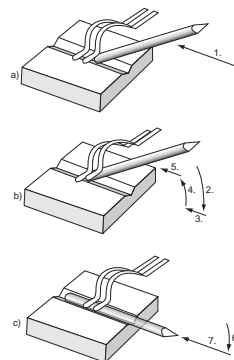
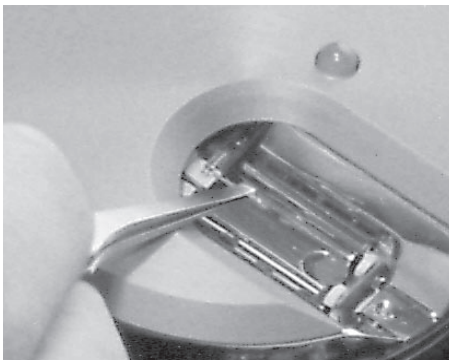
- First ensure that the cutting part of the wire cutters (figure *components, 8 a*), the half-round pliers (*8 b*) and the pointed tweezers (*8 c*) have been cleaned with ethanol. Touch the Pt/Ir wire (*8 e*) with these tools only.
- hold the end of the wire firmly with the pliers and cut a piece off approximately 5mm long.
- Still holding this piece of wire with the pliers, place the cutters at the free end, as obliquely as possible. (See picture below)
- Close the cutters until you can feel the wire, then pull in the direction shown below. The tip needs to be torn off rather than cleanly cut through, in order to get the required sharp tip.





Important!

- Never touch the tip end with anything!
 - The golden tip holders in the open part of the scan head are very delicate and not to be twisted or lifted too high!
 - Hold the wire with the tweezers behind the freshly cut tip.
 - Insert it carefully under the golden tip holder clamp in the scan head without twisting them (see figure *mounting the tip*):
1. Hold the tip wire under a slight angle, and move it over the groove against the first clamp, so that the end of the wire is under the clamp (figure a).
 2. Lower the wire so that it lifts the first clamp.
 3. Push the wire in, until it touches the second clamp.
 4. Lift the wire.



Mounting the tip

5. Push the end of the wire below the second clamp (figure b).
6. Lower the wire so that it lifts the second clamp.
7. Push the wire below the second clamp (figure c).

The freshly cut tip should be well held under the clamps and reach about 2-3mm beyond the tip holder. The tip is now installed.

Preparing the sample

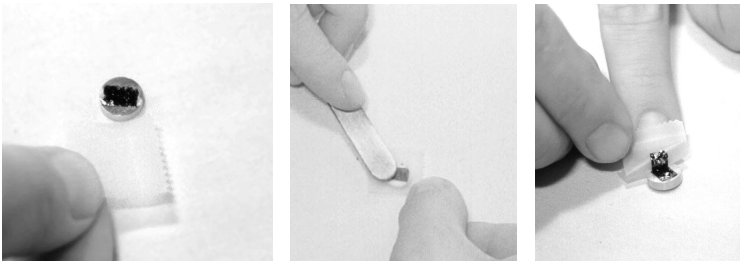
The STM can only examine electrically conductive materials. Nevertheless the choice of material is rather small because the surface of the sample must not oxidise, be totally clean and mirror-like to obtain useful results. Because of this some of the samples need special preparation.

Gold thin film

Cleaning the sample is neither possible nor necessary. Never touch the sample with your fingers or put it upside down anywhere, this will only make it unusable faster.

Graphite

The surface of the graphite sample should be cleaned every few months. Due to the layered structure of graphite this can easily be done using a piece of adhesive tape: (see pictures below)



- Put the sample on the table using the pair of tweezers.
- Stick a piece of adhesive tape gently to the graphite and then pull it off again: The topmost layer of the sample should stick to the tape.

- Remove any loose flakes with the pair of tweezers.

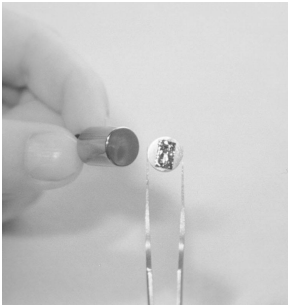
The graphite sample is now ready for use and may not be touched with the fingers.

Installing the sample

Important!

Always store the sample holder in its package, in order to prevent corrosion (see chapter *Maintenance*).

- Unpack the sample holder (figure *components, 8 f*) touching only its black plastic handle.
- Put the prepared sample onto the magnetic end of the sample holder using a pair of tweezers. (See below)



- Place the sample holder carefully in the scan head so that it doesn't touch the tip (see above).
- Put the sample holder down on to the guide bars first and release it gently on to the approach motor's support.

First Measurements

All the preparations are now done:

The STM is assembled, the software and a tip are installed and the graphite sample is ready.

In this chapter step by step instructions are given on how to operate the microscope and get your first pictures. More detailed explanations of the software and the system are given in the *software reference*.

Important!

- Never touch the sample's surface or the tip! Good results depend strongly on the accuracy of the preparation of the tip and the sample.
- The tip must never come in direct contact with the sample. This damages the end of the tip, and it has to be cut again.

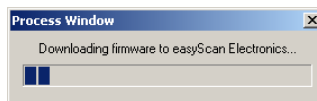
Starting the microscope

- Check if the power supply (figure *components, 3*) is connected to the AC mains power and turn it on:

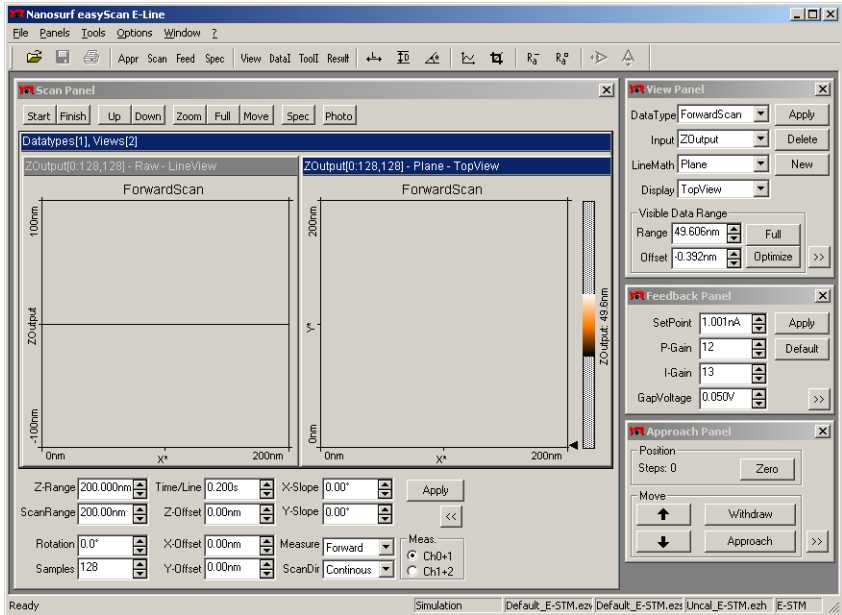
The red LED of the E-SPM electronics (*1*) flashes.

- Start the data acquisition easyScan E-Line software on your computer:

The main program window and a message box appear:



Now, your computer is communicating with the control electronics to initialise the system. This process is repeated every time the control electronics is turned off and on again. When download is completed, the electronic's red LEDs change from flashing to constantly shining, the LED on the scan head shines orange, and some control panels appear (see figure *Main program window*). Now the system is ready to use.



Approaching the tip

To start measuring, the sample must be very close to the tip to enable a tunneling current to flow. Approaching the sample without touching the tip, is a delicate operation carried out in three steps. The LED on the scan head tells you about the distance between the tip and the sample:

- LED orange: z-piezo fully extended toward the sample: the distance is too big, not tunneling current can be detected.
- LED red: z-piezo fully retracted: The tip touched or ‘crashed into’ the sample, the tunneling current is too high.
- LED green: z- piezo within the measuring range: tunneling current should be flowing.

1. Coarse approach by hand


- Push the sample holder (figure *components, 8 f*) carefully to within 1mm distance of the tip.



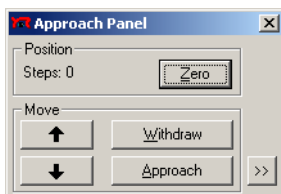
- If necessary try turning the sample holder around its axis so that the tip points towards a mirror-like area of the sample.
- Put the magnifying cover (7) over the scan head without touching the sample holder, place the magnifier so, that you can see the mirror image of the tip in the sample.

The cover reduces air flow around the scan head and reduces thermal drift in measurements at atomic scale.

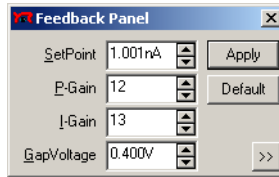
2. Fine approach by piezo motor

- Open the 'Panels' menu in the easyScan E-Line program window.
- Select the 'Approach Panel'.
- Watch the distance between tip and sample with help of the magnifier. Now click  in the 'Approach Panel' to move the sample towards the tip to a distance of a fraction of a millimetre.

You should only just be able to see the gap between the tip and its mirror image the sample. The smallest visible gap depends somewhat on the observation angle of the magnifier.



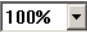



- Open the 'Feedback Panel' in the menu 'Panels'.



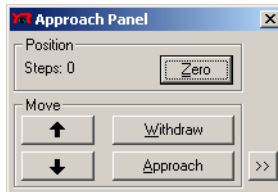
- Ensure that the following parameters are set correctly:
 - the 'SetPoint' (tunneling current) on approx. 1.00nA,
 - the 'GapVoltage' (tip-sample-voltage) on 0.05V,
 - the 'P-Gain' on 12 and the 'I-Gain' on 13 (feedback loop parameters).

When you have to change the instrument settings in any panel, you can use any of the following methods to change them:

- Activate any input by clicking in it with the mouse pointer, or by selecting it with the Tab-key.
- The value of an activated input can be increased and decreased using the up and down arrow keys on the keyboard. The new value is automatically used after one second.
- The value of a numerical input can also be increased and decreased by clicking the arrow buttons  with the mouse pointer. The new value is automatically applied after one second.
- The value of an active numerical input can be entered using the keyboard. The entered value must be confirmed by pressing the 'Enter' or 'Return' key, or by clicking  with the mouse pointer.
- The selection of a drop-down menu (e.g.: ) can be changed using the mouse. The selected value must be confirmed by pressing the 'Enter' or 'Return' key, or by clicking  with the mouse pointer.

3. Automatic approach

- Click  in the 'Approach Panel':



The sample holder is now moved towards the tip with the help of the piezo motor, until the tunneling current entered under 'SetPoint' is detected. Now the distance between sample and tip is controlled by the feedback loop. If the approach was successful, the LED on the scan head changes from orange to green and the message box 'Approach done' appears.

- Click the 'OK'-button.

Now the set tunneling current is flowing between tip and sample.

When the LED changes to red instead of green, the sample has 'crashed' into the tip, and the tip has to be cut again. (See chapter *Problems and Solutions*).

Start measurement

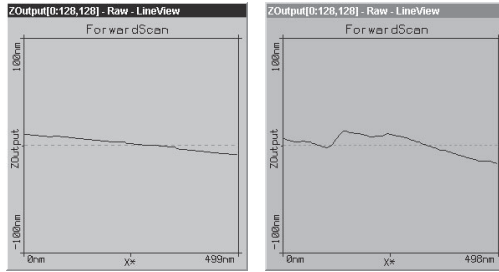
When the tunneling current defined by 'SetPoint' is flowing between tip and sample (LED green) you can start measuring:

- Click **Full** in the 'Scan Panel' to maximize the range of the scan.
- Start measuring by clicking **Start** in the 'Scan Panel'.

If the preparation of tip and sample, and the approach were successful, images of the measurement will show a line in the 'LineView' (figure *starting picture, left*) and a plane in the 'TopView'. Watch the displays for a while until the 'TopView'-image has been drawn about three times.

A 'nervous' line in the 'LineView' indicates a bad tunneling contact (figure *starting picture, right*). Usually this is caused by the tip being too blunt or instable. This means that you should stop measuring and cut a new tip:

- Click **Stop** and follow the instructions of the chapter *Problems and Solutions*.

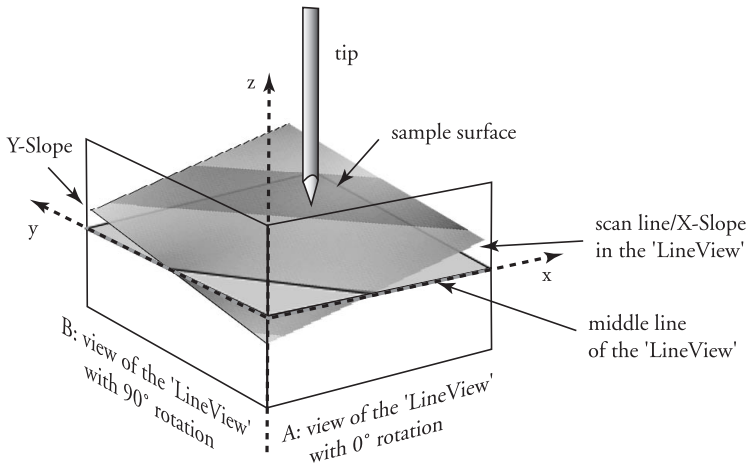


Starting picture: left: a good LineView, right: a 'nervous' LineView

If the line in the 'LineView' is calm and reproduces consistently, you can continue with the next section.

Adjusting the sample's tilt coordinates

Ideally, the plane of the measurement and the sample's surface should lie in the x-y-plane of the scanner. But mostly the sample plane is tilted with respect to that ideal plane. In this case, the sample cross section in the x^* measurement direction, as shown in the 'LineView' window, has a certain slope.

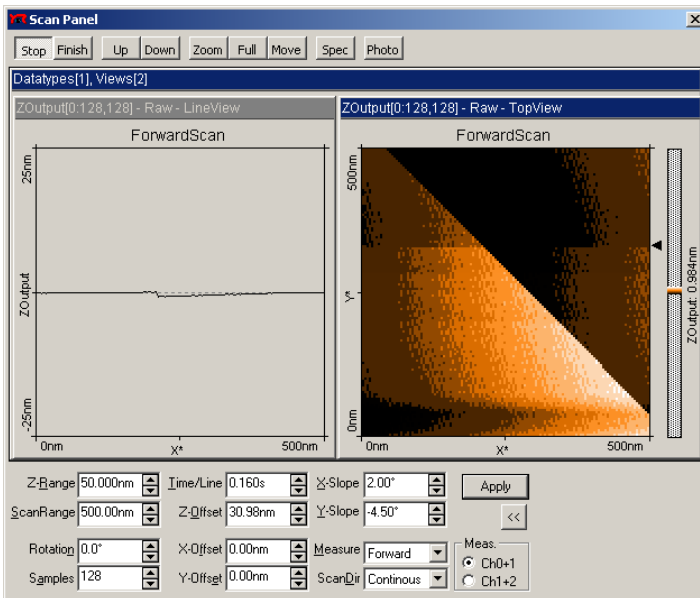


Tilt: Sample's and measurement orientation before tilt adjustment

This slope depends on the fast scan direction and therefore on the rotation of the measurement, as shown in figure *Tilt*, position A and B. It is desirable that the measurement plane is parallel to the sample plane, because this makes it easier to see smaller details in the measurement, and because the z-feedback loop can function more accurately in this case. Therefore, the sample plane should be made parallel to the sample plane by properly setting the values of 'X-Slope' and 'Y-Slope'.

You can align the measurement plane with the sample plane using the following procedure:

- Alter the value of 'X-Slope' using the arrow buttons until the x-axis of the scan line lies parallel to the x-axis of the sample. You can measure the slope in the LineView using the angle tool (see *Software Reference*).
- Enter the value 90 in the 'Rotation' input to scan along the y-direction of the scanner i.e. the sample's tilt as shown in the schematics view B. If the input for 'Rotation' is not visible, you can make it visible by clicking **>>**.



Scan panel after adjusting the slopes

- If the scan line is not horizontal, alter the value for 'Y-slope' until the y-axis of the scan lies parallel to the y-axis of the sample.

- Reset the 'Rotation' to 0°. The 'LineView' shows the X-slope again.

The value of the 'Z-Offset' varies slightly during measurement. This is correct because the option 'Auto. Adjust Z-Offset' in the menu 'Options' should be active.

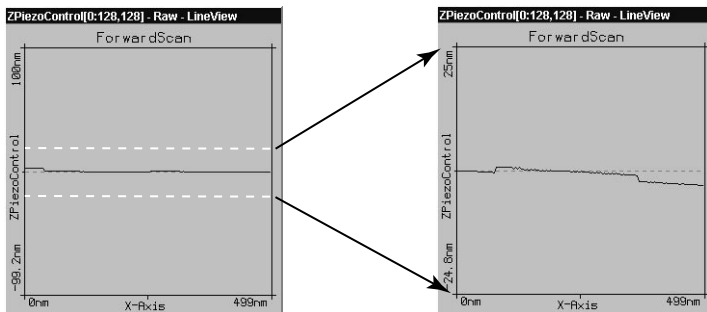
Achieving atomic resolution

You prepared your measurement so that the scan line in the centre of the 'LineView' is reproducing stably. Now the scan range has to be reduced, and the measured signals amplified in order to observe the atomic structure.

Reminder: Measurements on the nanometer scale are very sensitive. Direct light, fast movements causing air flow and temperature variations near the scan head can influence and disturb the measurement. It is best to let a promising measurement run for some time to let it stabilize thermally.

The following settings apply to measurements on graphite:

1. Reduce the value of 'Z-Range' in 'ScanPanel' to 50nm in order to concentrate the measurement to this range.

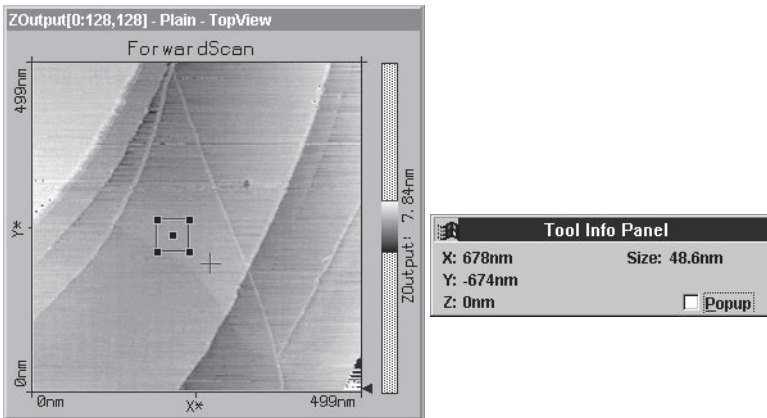


Diminishing 'Z-Range' amplifies the signal in Z-direction

2. Limit the scan range:

- click the 'TopView'-Display to make sure that it is active: its titlebar is the same colour as the main bar.

- click **Zoom**: The mouse pointer becomes a cross and the 'Tool Info Panel' opens.
- look for a 'flat' region (similar grey values) in 'TopView' and make a square there with the mouse pointer. The size of the square is displayed in the 'Tool Info Panel'.

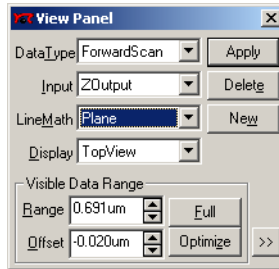


- Release the mouse button when the square's size is about 30-50nm.
 - Confirm your selection by double clicking on the display using the left mouse button. Consequently the selection is enlarged to the whole display size. You can abort the zoom function by clicking with the right mouse button.
3. Atomic arrangements can normally be made out at a 'ScanRange' of about 4 nm and at a 'Z-Range' of about 1.5 nm:
- Enter these values in 'Scan Panel' one after the other. Play with these values, they can be reduced even further. Between changes always allow the computer to scan the picture a couple of times before continuing.
 - Pay attention that the height of the signal in the 'LineView' window does not exceed the window height. If this happens, the z-Range is set too small and should be increased.

Consider that one nanometer is the diameter of between four and eight atoms.

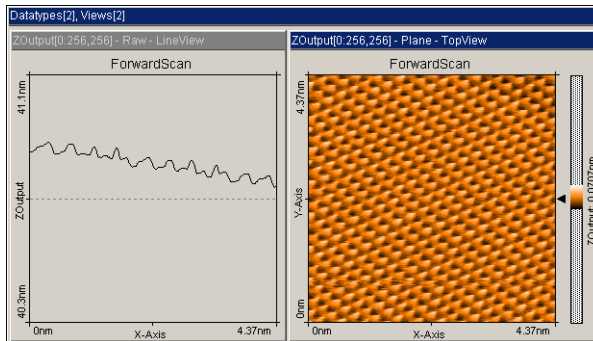
4. Some parts of the scan head react to the slightest temperature changes. As these thermal ‘movements’ influence the measurements on the nanometer scale, the sample has to be scanned as fast as possible.

- Set the ‘Time/Line’ in the ‘ScanPanel’ to 0.06s for atomic resolution.



View Panel

- If the contrast in the ‘Top View window is too large, or too small, open the ‘View Panel’ (see figure) and select **Optimize** in the ‘Visible Input Range’ section. You can also set the contrast manually using ‘Range’ and ‘Offset’ (See *Software Reference*. Section *View Panel* for more information).



Good images of a successful measurement

Snapshots of images

When you are satisfied with your image and would like to keep it, you can take a snapshot and save it for later:

- During the measurement, you can select **Photo** in the 'ScanPanel'. After having completed the actual frame, a copy of the measured image is taken and displayed in a separate window behind the 'ScanPanel'.
- If you would like to take the snapshot of the view as it appears during the measurement without waiting to finish the frame, stop the scanning using **Stop** and generate a copy of the view using **Photo**.


After finishing the measurements you can store the 'photographs' of your measurements in a storage medium e.g. your PC's hard drive (see section *Finish measuring*).

STM Measurement modes

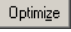
The surface can be scanned in two different ways: in the 'Constant current' (CC) and 'Constant height' (CH) mode:

In the CC-mode (default setting) the tunneling current is kept constant by the feedback loop and the movements of the tip by the z-piezo are recorded. This 'height profile' is displayed in a 'LineView' and the 'topographic' image is displayed as a grey scale coded 'TopView'. The tunneling current is not only dependent on the real topography but also on the local density of the electrons. This fact has to be considered when analysing the recorded images: the images are always superimposed and the electronic structure of the surface.

In CH-mode the scanning tip does not follow the samples corrugation. This time the strength of the tunneling current is measured. This can be achieved by turning the feedback loop off. But then no thermal drifts in Z-direction can be compensated for and tip crashes can not always be avoided. This problem can be avoided by setting the feedback parameters to very low values (1 or 2) so that the feedback loop can follow the slow movements (caused by thermal drift) of the sample. These are very small compared to the sample's corrugations. To measure in CH mode:

- set P-Gain to 0 and I-Gain to 2 in 'Feedback Panel'.
- apply these new values by using .
- to visualize the current information, choose 'Current' as input in the 'View Panel'.

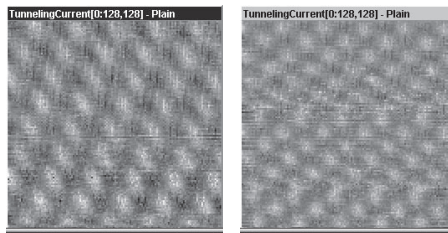
Notice that 'Z-Range' is now called 'InputRange' and the corresponding axis is labelled 'nA' instead of 'nm'.

- when displaying a 'TopView' image, use in 'ViewPanel', 'Visible Input Range'  in order to enhance the image's contrast.

Judging the quality of the images

From the quality of the measured images the quality of the tip and consequently that of the tunneling contact can be observed. A good tunneling contact is necessary for high quality images of atomic resolution.

- If temperature variations are present they cause so called 'thermal drift'. Consequently the images are stretched. This effect can be observed when e.g. the upward scan is very different to the downward scan showing two differently distorted lattices.

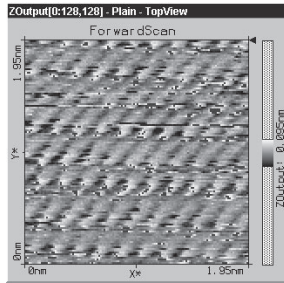


Consequent upward and downward scan showing thermal drift

Thermal drift is very clearly perceptible on an atomic scale. Variations of 1/10°C already cause variations in the length of e.g. the sample holder (steel) of several nanometers!

To decrease thermal drift, keep the measurement running for some time to let the system stabilize (up to about one hour).

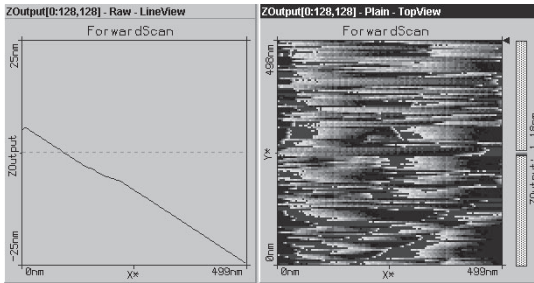
- If, during a good measurement the image quality diminished dramatically, the tip has most probably picked up some particles or you are near a step in the surface.



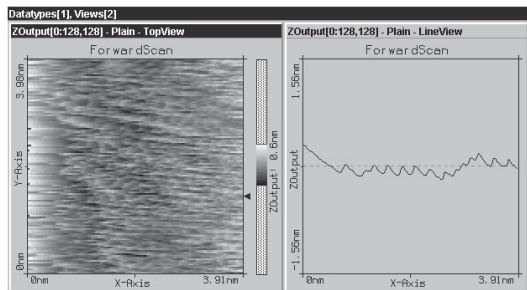
- See *Problems and solutions*: Image quality suddenly deteriorates'

In the following cases the tip has to be replaced i.e. cut freshly in order to establish a stable tunneling contact and high image quality:

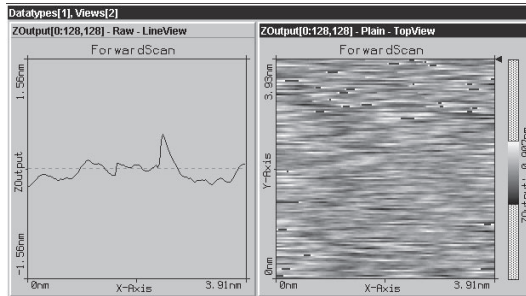
- If images in top view consist of only of uncorrelated lines:



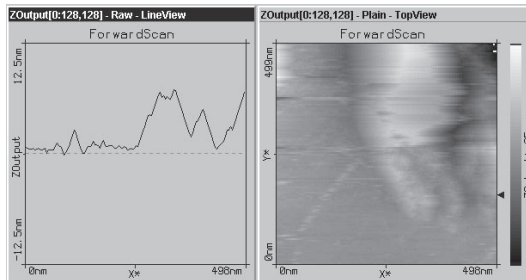
- If the images are 'smeared out' on one border (here on the left border):



- If each image looks different:



- If the scan lines in 'LineView' are unstable and the image in the 'TopView' is not 'sharp':

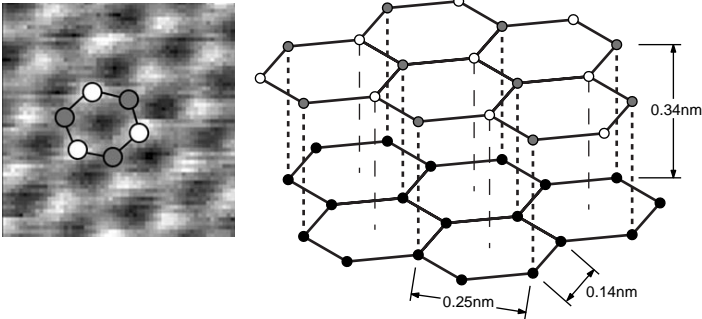


The graphite surface

In a good top view image of graphite you will see a pattern consisting of white, grey and black spots. It looks like a three dimensional image of balls lying next to each other, but be careful: these are not the single atoms!

To interpret the image correctly you must first be aware that bright spots show high points and dark spots low ones (except in 'LineMath' 'Derive').

In the lattice model of graphite one can see that there are two different positions of the carbon atoms in the graphite crystal lattice: One with a neighbouring atom in the plane below (grey) and one without a neighbour in the lattice below (white). As a consequence, the electrical conductivity of the graphite surface varies locally slightly so that the atoms without neighbours appear higher than the others.

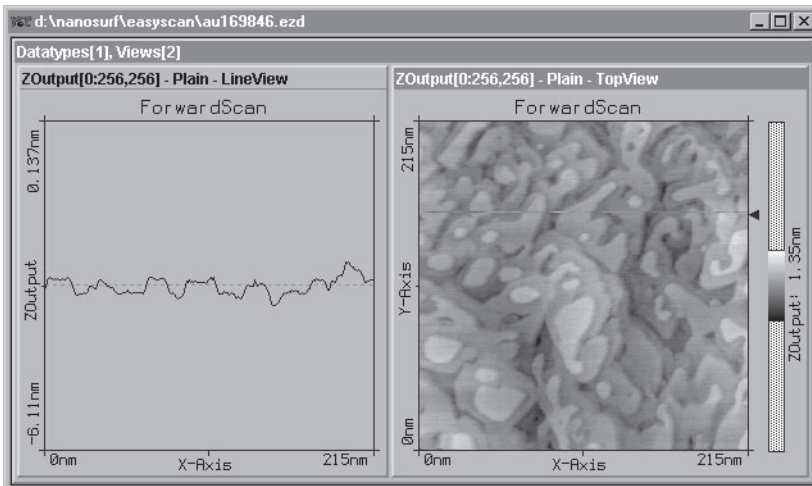


Graphite surface: left: measurement; right: lattice model

This also causes the lattice constant between the bright 'hills' to have the higher than normal value of 0.25nm.

Measuring Gold

It is more difficult to obtain good images of a gold. Atomic structures are difficult to observe because the electrons on the surface are much more homogeneously distributed unlike graphite. But with some training the mono atomic gold steps can be observed.

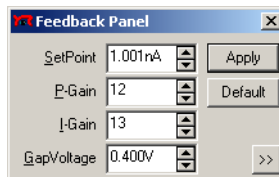


Due to the fact that the gold sample cannot be cleaned by simple means it is possible that with time contaminants may prevent you obtaining good results.

Tip:

Before you do any experiments with the gold sample it is necessary to practise on the graphite sample. You should also test the quality of your tip using the graphite sample.

- Proceed as you did with the graphite sample (preparation & slope compensation), but there are two exceptions to note:
 - select a gap voltage between 0.3-0.5V.



- increase the value of parameter 'Time/Line' to 0.3s in the 'Scan Panel'.

If you do not get stably reproduced scan lines you should look for another clean measuring spot.

- First try with followed by . If that does not change much retract the sample holder and rotate it a little by hand. Repeat the approach.
- If the image reproduces stably decrease the 'Z-Range' to 50nm and select a 'ScanRange' between 200 and 300nm.
- Now decrease the 'Z-Range' to 12nm or less.

Evaluate your measurements in the same way as you did with the graphite images, zoom, measure, save etc.

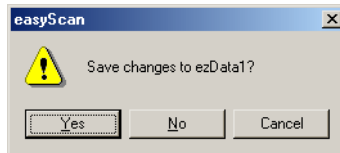
Finish measuring

- To stop a measurement, click .
- By clicking in 'Approach Panel' you can retract the sample holder to a safe and visible distance from the tip.
- Close all panels in order to see the saved 'snapshots'.
- Activate the 'snapshot' that you would like to save, by clicking onto the image. Select the menu 'File->Save as...'. Select the name and the folder you would like to store the image in.

These stored images and all the corresponding data can be opened with the easyScan E-Line software, viewed, analysed and printed any time (see also *Software Reference*).

Turning off and storing the instrument

- Exit the easyScan E-Line program after having stored all desired images. If you leave the program without saving some data the program asks if you really do not want to save them:



If, however, you would like to save some images use . If not you can leave the program with .

- Disconnect the power supply from the mains supply.

If you perform measurements regularly leave the instrument with the cover over the scanner to protect it against dust.

If you do not operate the instrument for several weeks you should put it back into the instrument suitcase:

- Remove the sample and sample holder and pack up all parts. The tip can be left in the scanner.

- Store the sample holder in its container, and check that the silica is still blue (see chapter *maintenance*)

By storing the instrument in the suitcase it is protected from dust. Simultaneously the rubber feet of the vibration isolation platform should be relieved. The damping capability may decrease with time.

Maintenance

To ensure the fault-free operation of the microscope the following instructions for maintenance have to be followed.

Scan head

It is very important to prevent the sample holder and the open part of the scanner from becoming dirty or damp.

- The sample holder is made of magnetic steel therefore it suffers from corrosion in a humid environment. To reduce corrosion and increase life expectancy, the sample holder must be stored in its container together with the moisture absorbing silica container.



The container is waterproof but not airtight. The silica contains a blue indicator which turns pink when saturated. It can be regenerated by heating the silica container @ 100°C for at least two hours until it turns completely blue again.

- If you touch the metal part of the sample holder or it does not move freely, clean it with a soft cloth, if necessary moistened with alcohol. During cleaning, move the cloth along the sample holder in the axial direction, do not move it around its circumference.

- Clean the sample holder guide bars (see picture above), the surfaces of the piezo motor and the tip holder with a cotton swab if necessary lightly moistened with alcohol, ensure the tip is removed when doing this!

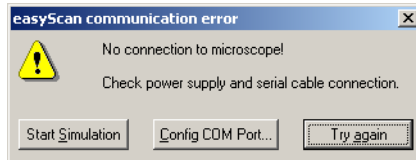


Scan electronics

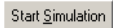
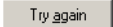

Clean the cabinet and the controls with a soft cloth lightly moistened with a mild detergent solution. Do not use any abrasive pad or solvent like alcohol or benzine.

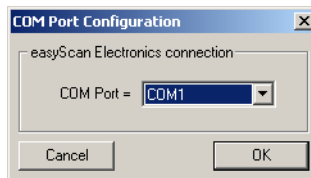
Problems and Solutions

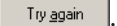
'No connection to microscope!'



This error message appears when the scanning software is waiting for an answer from scan electronics. This can have various reasons:

- The microscope is not connected:
 - If you wish to perform a simulated measurement select . Otherwise check the connection and select .
- The easyScan SPM electronics is not connected to the power supply:
 - check that the power LEDs on the electronics are on.
 - check the connection.
- The easyScan SPM electronics is not connected to the computer:
 - check the connection.
- The wrong COM-port has been selected during software installation:
 - Use , and select the correct COM-port in the dialog:



- The scan electronics is performing a task which lasts an unforeseen length of time causing a time-out. Using Windows NT this can happen when the system is occupied with itself and blocks the serial port:
 - Use .



- The electronics is damaged.
 - Contact your dealer.

Sample holder moves too slowly / stops sometimes

If the fine approach using  and  is affected:

- Clean the sample holder, guide bars and the surfaces of the approach motor following the procedure described in chapter *Maintenance*.

'Approach' is too slow / stops sometimes

- Clean the sample holder guide bars and the surfaces following the procedure described in chapter *Maintenance*. Let the parts dry sufficiently.
- If cleaning was no improvement open the 'Approach Panel's extended configuration using .
- Increase the value of 'Stepsize' and click .

Now the motor moves the sample holder with larger steps during automatic approach.

- Save the new value for 'Stepsize' using menu 'File->Parameters->Save'

Tip often crashes into sample during 'Approach'

In this case the motor moves the sample holder with too bigger steps towards the tip:



- Open the 'Approach Panel's extended configuration using .
- Decrease the value 'Stepsize' in 'Automatic Move Configuration' by about 10% and click .
- Repeat the approach with a new tip. If the approach fails again, reduce 'Stepsize' further.
- Save the best 'Stepsize' value using menu 'File->Parameters->Save'

Image quality suddenly deteriorates

- When a scan line suddenly starts reproducing badly, the tip may have picked up some particles, or it is scanning close to a deformity in the sample's surface.
 - Continue measuring for a while (4-5 images) eventually the tip loses the picked up material again.
 - Increase the scan range, and zoom into a new flat area.
 - You can try to induce changes at the tip's end: While measuring increase the gap voltage in the 'Feedback Panel' to 2V then reduce it to the old value again.
 - You can also induce changes of the tip's end by increasing the tunneling current to 20nA for a short time then reducing it to its old value again.
 - Retract the sample using Withdraw then perform a new approach.



If no improvement can be seen after going through these procedures, you have to prepare a new tip.

- Did the scan line in the 'LineView' suddenly disappear and the LED on the scanner turns orange the tip has lost contact:
 - Use Approach in the 'Approach Panel' then repeat the steps in chapter 'Start measurement'.
- If the LED flashes green-orange while measuring then the tip is losing contact from time to time and the tunneling contact is very unstable.
 - Click Withdraw in the 'Approach Panel', then Approach and repeat the steps in chapter 'Start measurement'.

Cutting a new tip


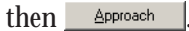
After a crash (the tip with the sample) or when scan lines start reproducing badly and consequently the image deteriorates you should proceed as follows:

- Remove the magnifying cover from the scan head.

- Retract the sample holder first by using  then . Remove the sample holder by hand.
- Pull the tip out from under the tip holders carefully, using a pair of sharp tweezers.
- Carefully follow the instructions in chapter 'Preparing and installing the tip'.
- Repeat procedures in chapter 'Measuring graphite'.

Z-Offset does not change automatically

In the default configuration of the easyScan E-Line software the item in menu 'Options->Auto. Adjust Z-Offset' is activated. If the numeric value of 'Z-Offset' in the 'Scan Panel' does not alter slightly during scan:

- Check that the option is activated.
- The scan line is at one of the limits of the z-range. Increase the value of 'Z-Range'.
- Possibly the tip is at one of the limit positions of the z-piezo. Use  then .

Technical Data

The specifications given here are typical values of the Nanosurf products. The exact specifications vary somewhat from instrument to instrument, and are stored on the installation CD, and can be found in the Calibration dialog (see *Software Reference*).

Scan ranges and resolution

Maximum XY-Scan range	typ. 0.5 μm	(1 μm optional)
Maximum Z-range	200 nm	
Drive resolution Z	0.003 nm	
Drive resolution XY	0.015 nm	
gap voltage	$\pm 10\text{V}$ in 5mV steps	
Set point current	$\pm 100\text{nA}$ in 25pA steps	
sample size	max. 10mm diameter	

The exact values are dependent on the calibration of the piezo elements. Drive resolution is calculated by dividing the scan range over 16 bits.

easyScan electronics

Max. scan speed:	1800 data points per second
feedback loop bandwidth:	3 kHz
Additional User ADC Input:	Option available

