

## TROUBLESHOOTING

### PROBLEMS

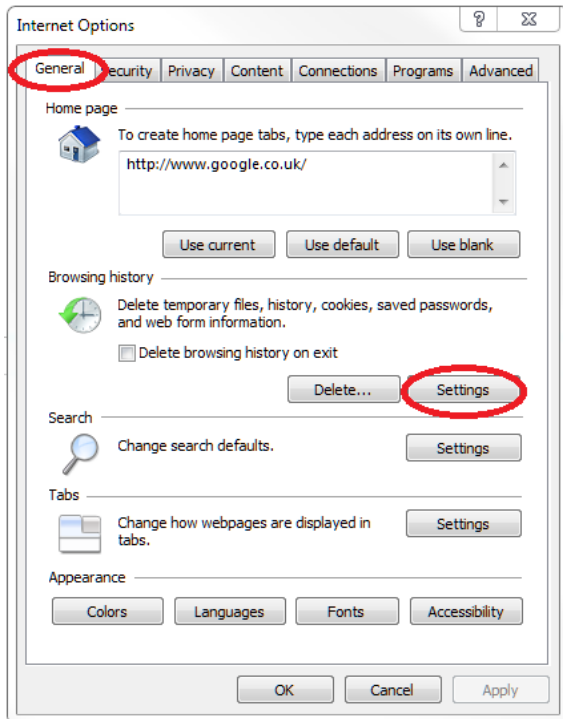
1. [Why is the graph not visible on the web site?](#)
2. [Why the graph is showing data only from the current day and only for the 1<sup>st</sup> channel?](#)
3. [I've connected the unit directly to the PC via ethernet cable but I can't open the web site](#)

## SOOLUTIONS

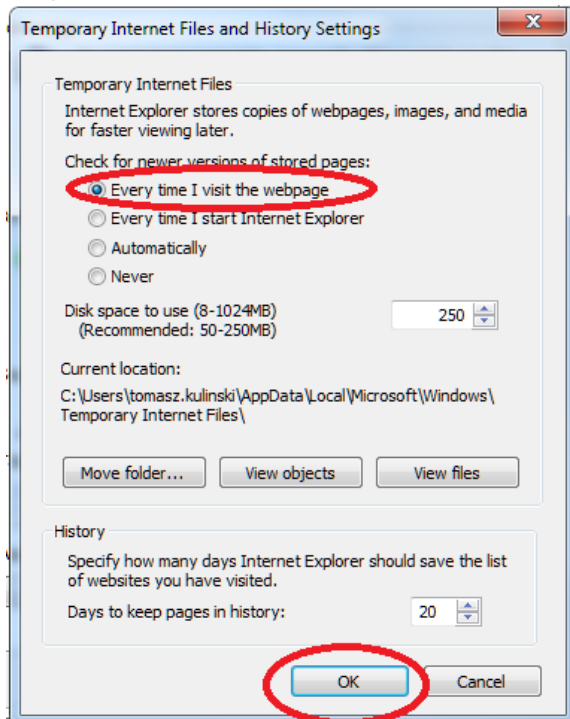
1. Java Runtime Environment (JRE 6 or higher) must be installed.
2. Change the web browser's cache settings.

- Internet Explorer

### Step 1

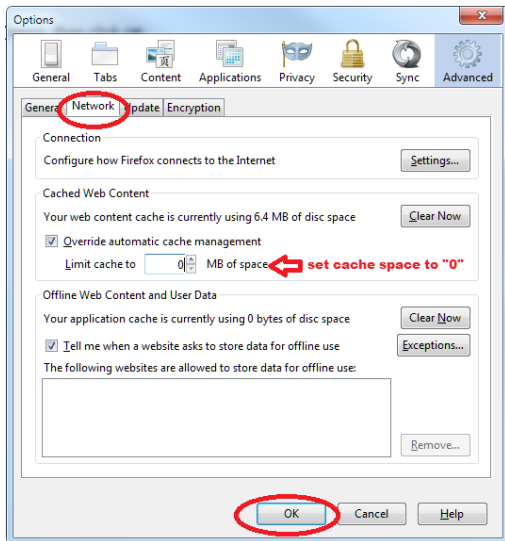


### Step 2

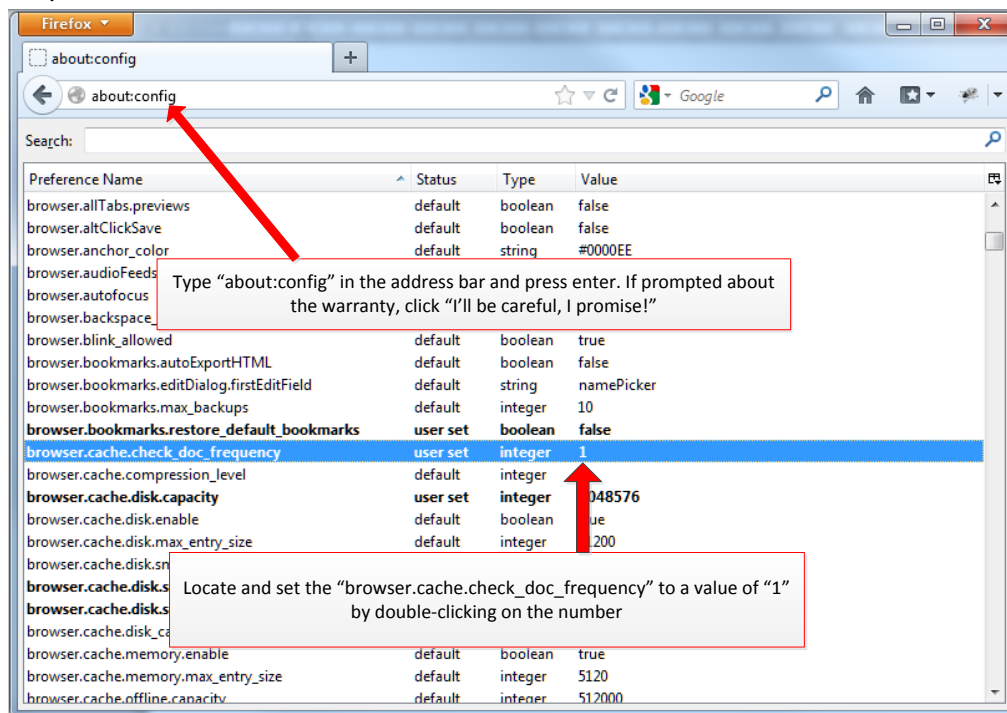


- Firefox

### Step 1



### Step 2



### 3. The IP address of the PC needs to match the IP address of the unit.

If your PC uses DHCP it should pick-up the right IP address automatically but if doesn't, the IP address has to be changed manually.

Example:

Unit's default network settings: IP: 192.168.0.2  
 Mask: 255.255.255.0  
 Gateway: 192.168.0.1

PC's network settings: IP: 192.168.0.x (x is a number between 0 and 255 but different than 2)  
 Mask: 255.255.255.0  
 Gateway: 192.168.0.1

To change the network settings in Windows 7 please follow these steps:

### Step 1

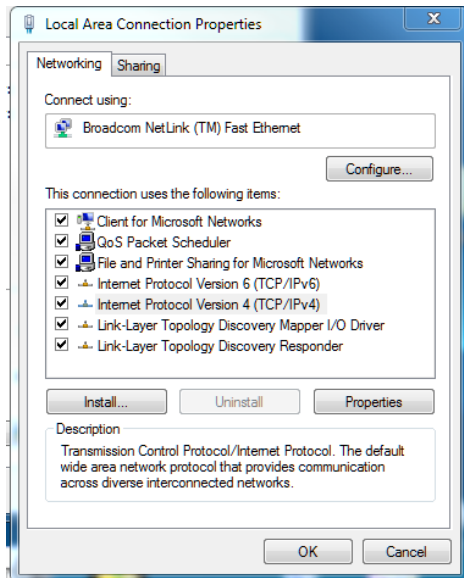
Open Network connection by clicking the **Start** button, and then clicking **Control Panel**. In the search box, type **adapter**, and then, under Network and Sharing Center, click **View network connections**.

### Step 2

Right-click the connection that you want to change, and then click **Properties**. If you're prompted for an administrator password or confirmation, type the password or provide confirmation.

### Step 3

Click the **Networking** tab. Under **This connection uses the following items**, click **Internet Protocol Version 4 (TCP/IPv4)**, and click **Properties**.



### Step 4

To specify an IP address, click **Use the following IP address**, and then, in the **IP address**, **Subnet mask**, and **Default gateway** boxes, type the IP address settings.

