

Galaxy Gold

User Guide

Table of Contents

| | |
|--|-----------|
| INTRODUCTION | IV |
| SECTION 1: APPLICATIONS | 1 |
| REMOTE SERVICING (COMMUNICATING WITH MULTIPLE GALAXY CONTROL PANELS)..... | 1 |
| ON-SITE SERVICING (SINGLE GALAXY CONTROL PANEL)..... | 2 |
| SECTION 2: INSTALLATION | 3 |
| PC REQUIREMENTS..... | 3 |
| ADDITIONAL REQUIREMENTS | 3 |
| <i>For Remote Servicing:</i> | 3 |
| <i>For On-Site Servicing:</i> | 3 |
| LOADING GALAXY GOLD..... | 3 |
| SETTING UP THE GALAXY GOLD SHORTCUT ICON..... | 3 |
| CONVERTING FROM GALAXY GOLD V4.2..... | 3 |
| COPY PROTECTION DEVICE (DONGLE) INSTALLATION | 3 |
| SECTION 3: STARTING GALAXY GOLD | 4 |
| RUNNING GALAXY GOLD FROM THE START MENU | 4 |
| SELECTING OPTIONS | 5 |
| USING THE PC MOUSE | 5 |
| USING THE KEYBOARD | 5 |
| THE GALAXY GOLD KEYPAD..... | 5 |
| THE DROP DOWN MENU OPTIONS | 5 |
| CONTROL MENU | 5 |
| FILE MENU | 6 |
| CONNECT MENU | 6 |
| PROGRAM MENU | 6 |
| SECTION 4: OPERATION | 7 |
| THE FILE MENU | 7 |
| CREATING A NEW SITE | 7 |
| OPENING AN EXISTING SITE..... | 7 |
| MODIFYING SITE DETAILS | 8 |
| DELETING A SITE | 8 |
| DUPLICATING AN EXISTING SITE | 8 |
| ACTIVE USER (GALAXY PASSWORD PROTECTION SCREEN) | 9 |
| BACKUP SITE AND RESTORE SITE | 9 |
| CHANGING WORKING DIRECTORIES | 9 |
| EXITING GALAXY GOLD | 9 |
| THE CONNECT MENU | 10 |
| SETUP | 10 |
| DIALING A SITE..... | 10 |
| <i>Control Panel Software Version Checker</i> | 11 |
| <i>Connect with Site</i> | 11 |
| CALL BACK DIALING | 12 |
| WAIT FOR CALL BACK | 13 |
| <i>Remote Servicing</i> | 13 |
| HANGING UP FROM THE GALAXY CONTROL PANEL | 13 |
| THE PROGRAM MENU | 14 |
| COPYING SITE DATA..... | 14 |
| OVERWRITING SITE DATA | 15 |
| COPYING THE SITE LOG | 16 |
| <i>From an On-Line Galaxy Site</i> | 16 |
| <i>From an RS232 Interface Module Containing Galaxy Site Details</i> | 16 |
| COPY THE MICROMAX LOG..... | 16 |
| <i>From an On-Line Galaxy Site</i> | 16 |
| ASSIGNING AND CHANGING THE SITE PASSWORD | 17 |

| | |
|---|-----------|
| VIEWING AND MODIFYING SITE PROGRAM DATA..... | 17 |
| <i>Panel Type</i> | 18 |
| <i>RIOs Present</i> | 18 |
| <i>Print</i> | 18 |
| VIEWING THE SITE LOG | 19 |
| <i>Filtering Displayed Events</i> | 19 |
| <i>Printing the Event Log</i> | 19 |
| <i>Printing a Single Event Log Page:</i> | 19 |
| VIEWING THE MICROMAX CARD (ACCESS DOORS) LOG..... | 20 |
| <i>Filtering Displayed Events</i> | 20 |
| <i>Printing the MAX Log</i> | 20 |
| <i>Printing a Single MAX Log Page:</i> | 20 |
| ASSIGNING AND MODIFYING USER ATTRIBUTES | 21 |
| <i>Creating New Users</i> | 21 |
| <i>Modifying Existing User Attributes</i> | 21 |
| <i>Deleting an Existing User</i> | 21 |
| MIMIC PANEL | 22 |
| <i>Using the Mimic Panel function in View only mode</i> | 23 |
| <i>Using the mimic function in Allow panel modifications mode</i> | 25 |
| GALAXY RS232 MODULE..... | 26 |
| SECTION 5: GALAXY GOLD TRANSLATOR | 27 |
| INSTALLATION..... | 27 |
| SETTING UP THE TRANSLATOR SHORTCUT ICON | 27 |
| USING THE TRANSLATOR..... | 27 |
| APPENDIX A: GALAXY GOLD MESSAGES..... | 28 |
| APPENDIX B : GALAXY GOLD MODEM RESET STRINGS..... | 30 |
| APPENDIX C : GALAXY GOLD PANEL COMPATIBILITY..... | 31 |
| APPENDIX D: QUICK PROGRAMMING KEY INSTRUCTIONS..... | 32 |
| APPENDIX E: PC NETWORK SET-UP REQUIREMENTS..... | 33 |
| APPENDIX F: DATA RANGES | 34 |

INTRODUCTION

Galaxy Gold is an advanced, high performance software program that allows the Galaxy range of control panels to be remotely and/or locally serviced via a Personal Computer (PC).

The package is available in two variants:

Galaxy Gold PC licence (required only on initial purchase of Galaxy Gold):

- Without copy protection — order as R006
- With copy protection — order as R011 (includes copy protection device)

Galaxy Gold Update:

- Without copy protection — order as R007
- With copy protection — order as R012

A Galaxy Gold translator program is available which allows the text viewed on the Galaxy Gold screens and menus to be customised to the user or company requirements.

Once installed on the PC, Galaxy Gold software allows complete remote servicing of Galaxy control panels that have a Galaxy Telecom Module (E062), ISDN Module (A211), RS232 Module (E054) and serial modem or Ethernet Module (E080) installed. The level of control achieved is identical to that of an on-site keypad. This ability to remotely service sites is augmented by the facility to copy programming data from a remote Galaxy control panel to the PC and, if required, this information can be used to overwrite the Galaxy control panel.

The off-line programming facility allows the copied site data to be viewed and modified using the PC, enabling Galaxy site programming data to be created and stored in advance of overwriting the required remote Galaxy site.

Alternatively, the PC can be connected directly to a single Galaxy control panel, via a Galaxy RS232 Interface Module, and used to locally service the site.

Galaxy Gold can operate as a stand-alone package or in conjunction with Alarm Monitoring software. When combined with Alarm Monitoring, the details stored in the Galaxy Gold database are used by Alarm Monitoring to display comprehensive site information and provide the operator with detailed action instructions.

This manual assumes previous experience of working in the Microsoft Windows operating system. Refer to the Windows documentation if there are any problems.

Section 1: APPLICATIONS

Remote Servicing (Communicating with Multiple Galaxy Control Panels)

Galaxy Gold services and controls remotely situated Galaxy control panels, connecting to the control panels via the appropriate network. The networks, which can be used to support Galaxy Gold are PSTN (Public Switched Telephone Network), ISDN, Ethernet and direct connection via the RS232 interface unit.

Each remote site requires a communication module to be connected to the AB communication line of the Galaxy control panel. The table below indicates which modules are required for each communication network.

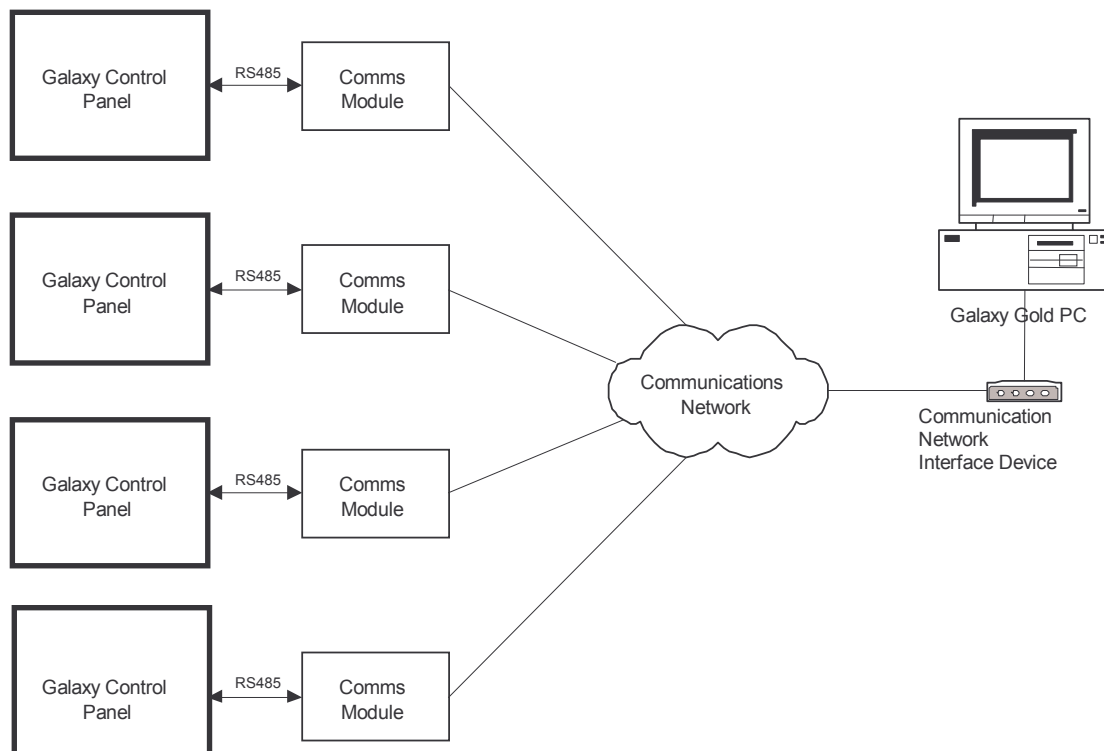
| Communication Network | Communication Module | Part Number |
|-----------------------|----------------------|-------------------------|
| PSTN | Telecom Module | E062 |
| PSTN | RS232 + Serial Modem | E054 + OEM serial modem |
| ISDN/ISDN TA | ISDN Module | A211 |
| Ethernet 10 Base T | Ethernet Module | E080 |

Note: The ISDN module is only compatible with V3 software and above. The Ethernet Module is only compatible with V4 software and above.

The Galaxy Gold PC also requires an interface device to connect to the communication network. The table below identifies the device required for each network.

| Communication Network | Interface Device |
|-----------------------|---------------------------------------|
| PSTN | Hayes compatible V21/V22 serial modem |
| ISDN/ISDN TA | ISDN Modem |
| Ethernet 10 Base T | 10 Base T Ethernet Network Card |

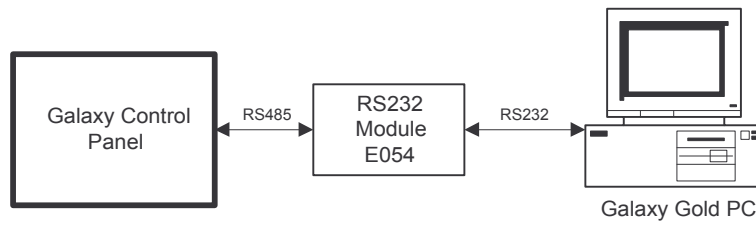
The diagram below gives a graphical representation of multiple site servicing using Galaxy Gold over a communication network.



This type of configuration is designed for organisations requiring to service and control multiple remote sites, enabling the information contained on each site to be copied, stored and overwritten using the PC. The stored information can also be modified using the off-line programming facility, enabling Galaxy sites to be programmed and stored on the PC in advance of commissioning the control panel.

On-Site Servicing (Single Galaxy Control Panel)

Galaxy Gold connects and services a single, locally situated Galaxy control panel via a Galaxy RS232 Interface Module that connects the panel to the PC.



This allows the servicing and controlling of the site by security guards or other authorised personnel and is typically suited to large sites with several departments or areas.

Note: The recommended maximum AB (RS485) cable length for connecting the RS232 Interface Module to Galaxy control panel is 1000 metres. The maximum length of the RS232 serial interface cable is 15 metres.

Section 2: INSTALLATION

PC Requirements

- .PC — IBM compatible
- .Processor — Pentium II 400 or higher (for Windows 98) or Pentium II 450 (for Windows NT Service Pack 3/ME/2000/xP)
- .Memory — 128 MB RAM minimum (for Windows 98) or 256 MB RAM minimum (for Windows NT Service Pack 3/ME/2000/xP)
- .Hard Disk — 40 MB minimum
- .CD-ROM Drive
- .Operating System — Windows 98/NT Service Pack 3/ME/2000/xP
- .Interface — 2 serial ports, 1 parallel port
- .Graphics Adapter — Super VGA or higher resolution
- .Display — Super VGA or higher resolution (1024x768 minimum screen resolution)
- .Mouse — Microsoft Windows compatible

Additional Requirements

For Remote Servicing:

- .Modem — V.21 or V.22 Hayes compatible (Ethernet card if connecting to an Ethernet Network).
- .Telephone line.

For On-Site Servicing:

- .RS232 serial interface cable (see RS232 Instruction Guide for details).

Loading Galaxy Gold

1. Insert the Galaxy Gold CD into the CD-ROM drive, the installation program should run automatically, **OR**
2. Select Run from the Start menu button.
3. Type **D:\CountrySelect.EXE** .
4. Follow the on-screen instructions displayed during the installation procedure.

Setting Up the Galaxy Gold Shortcut Icon

1. Place the mouse pointer on the desktop in your Windows environment. Press the right mouse button. Point to New option. The New option should be highlighted and another list of options will appear. Select Shortcut and press the left mouse button.
2. In the Create shortcut dialogue box click on browse. Double click the AdemTech folder and then the GalGold folder and then the folder of the current version, double click the Galaxy Gold icon.
3. The create Shortcut dialogue box will appear. Click on the Next> button. Either, press return to accept GalGold32 as the Galaxy Gold icon label, or, press the Delete button on the computer keypad and the type the Galaxy Gold icon label text of your choice. Press Enter on the keypad.
4. Double clicking in the Galaxy Gold icon will launch your Galaxy Gold software.

Important: If running Galaxy Gold V5 for the first time, all existing Galaxy site details must be converted to 32-Bit format using the procedure detailed below.

Converting from Galaxy Gold V4.2

1. Select Programs from the start menu.
2. Select the Galaxy Gold Program group.
3. Select Galaxy gold Site Converter.
4. Click on 'Old' button and select C:\Galgold\SiteData.
5. A list of sites will appear.
6. Click on the 'New' button and select C:\Ademtech\Galgold\SiteData.
7. Click on the 'All' button.
8. Sites will be converted to the new format, which is a Data and Log file per site. The file is named after the site.

Copy Protection Device (Dongle) Installation

1. Remove any printer cable connected to the printer port marked LPT1.
2. Insert the male connector of the copy protection device into the printer port LPT1.
3. If a printer requires to be connected to the PC, insert the printer cable into the female connector of the copy protection device.

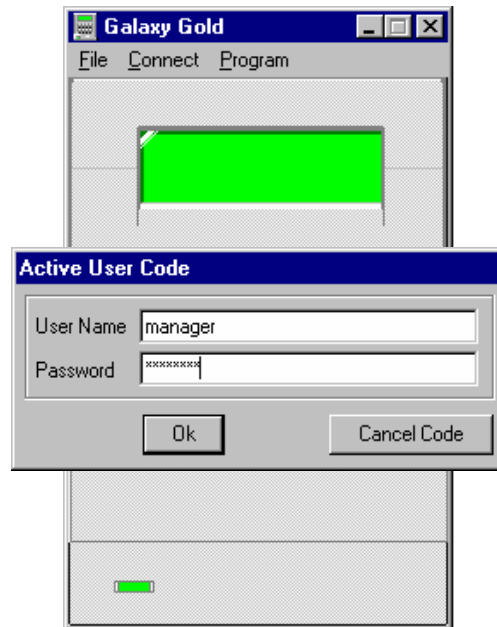
Note: For Windows NT/2000/xP platforms, dongle drivers must be installed for correct operation. To install the drivers, follow the instructions in the Dongle Drivers\Readme.txt file.

Note: If the PC is using Alarm Monitoring to monitor Galaxy panels, then it is recommended that a second telephone line and V.21 or V.22 modem (dedicated to the Alarm Monitoring operations on the PC) are used to allow Alarm Monitoring to receive uninterrupted events on the other line and modem.

Section 3: STARTING GALAXY GOLD

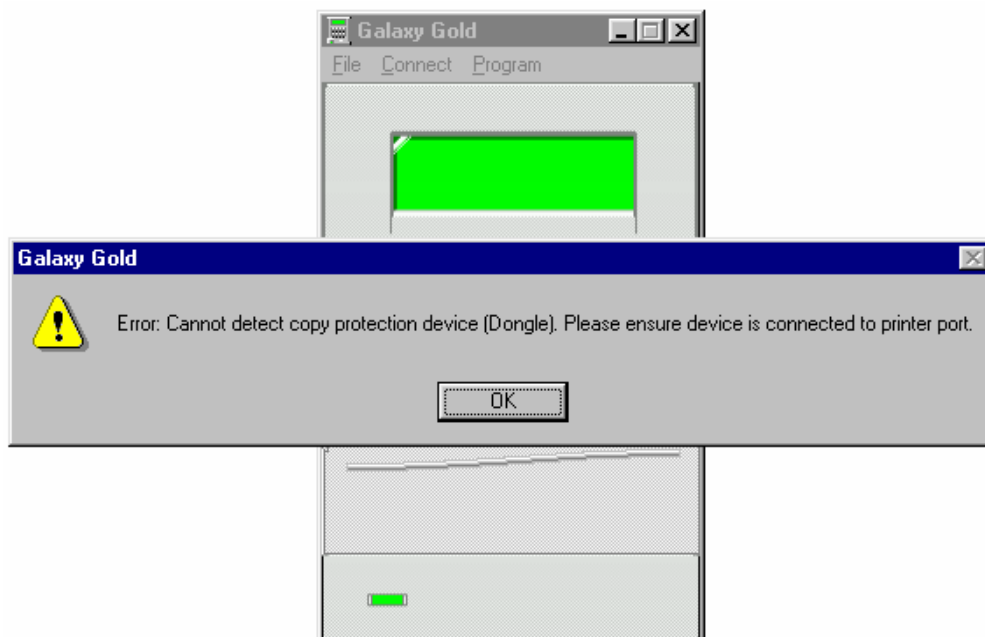
Running Galaxy Gold from the Start Menu

1. Select the Start menu button
2. Select Programs.
3. Select the Galaxy Gold program group.
4. Select Galaxy Gold
5. The Galaxy Gold keypad screen is displayed



6. Enter the name of the user in the **User Name** field (default is **manager**) and press **ENTER**.
7. Enter the user **Password** (this is displayed as *'s for increased security) and press **ENTER**. The default password is **password**.
8. If a valid user name and password has been entered the **Active User Code** screen closes. The Galaxy Gold keypad is displayed by itself, indicating that the program has been accessed successfully and is ready to initiate remote servicing. If an invalid user name or password is entered, an error message is displayed.

On opening Galaxy Gold, if the keypad displays:



1. Ensure that the copy protection device is securely located in printer port LPT1.
2. Ensure that the copy protection device is the one supplied with the software package.

If the message continues to display, contact the installation company.

Selecting Options

The menu options on the Galaxy Gold screen are selected using the PC mouse and/or the PC keyboard. Some of the menu options cannot be accessed unless another option has been activated. For example, **C**onnect **D**ial cannot be selected unless a site file is currently open. Options that are not available for selection are ghosted (displayed in faint type) when the menu options are displayed.

Using the PC Mouse

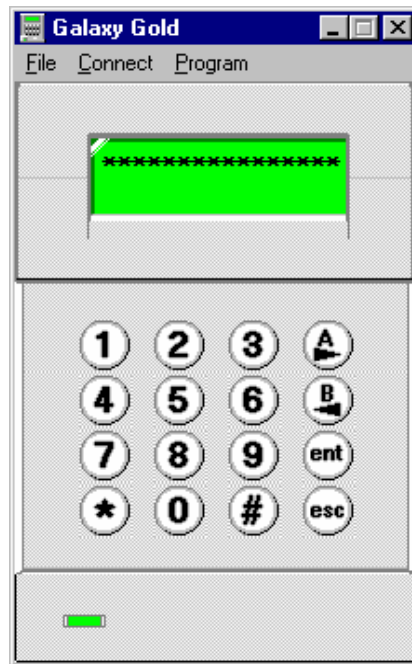
1. Point at the menu option required from the Galaxy Gold menu bar.
2. Click the mouse button. The drop-down menu is displayed.
3. Point at the drop-down menu option required. To cancel a menu selection, move the pointer out of the drop-down menu box and click the mouse button.
4. Click the mouse button. The selected menu option is activated.

Using the Keyboard

1. Press ALT or F10 to select the menu bar. The **F**ile menu is highlighted.
2. Select the menu option required from the menu bar using **←** and **→**.
3. Press ENTER. The drop-down menu is displayed in full.
4. Select the drop down menu option required using **↑** and **↓**. To cancel a menu selection press ESCAPE.
5. Press ENTER. The selected menu option is activated.

The Galaxy Gold Keypad

The main Galaxy Gold window is a graphic representation of the Galaxy keypad. This keypad enables the user to perform all the remote servicing features available with Galaxy Gold.



The Drop Down Menu Options

There are four drop down menus available with Galaxy Gold: **F**ile; **C**onnect; **P**rogram and **C**ontrol. The **C**ontrol menu is selected by clicking on the **Control Menu Box** on the top left of the Galaxy Gold keypad or by pressing **ALT** or **F10** followed by **←**. The drop down options contained within each of the four menus are as follows:

Control Menu



Selecting the **Control Menu** button allows the usual Windows control menu options to be implemented on Galaxy Gold software. This menu is particularly useful if the windowing functions are carried out using the keyboard (rather than the mouse).

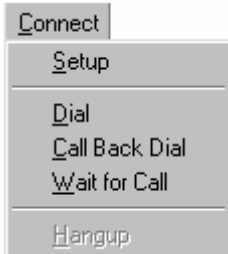
File Menu



Selecting the **File Menu** displays the following options:

| | |
|----------------------------|---|
| <u>N</u>ew: | create a new site. |
| <u>O</u>pen: | open an existing site. |
| <u>M</u>odify: | modify details of the open site. |
| <u>D</u>elete: | delete an existing site. |
| <u>D</u>uplicate: | duplicate an existing site. |
| <u>A</u>ctive User: | locks out unauthorised users. |
| <u>B</u>ackup: | not available in this version. |
| <u>R</u>estore: | not available in this version. |
| <u>D</u>irectory: | changes to a different working directory. |
| <u>E</u>xit: | from the Galaxy Gold program. |

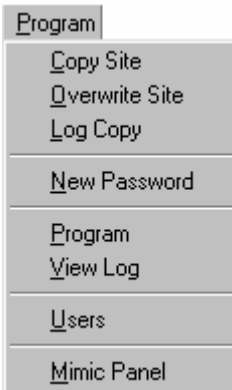
Connect Menu



Selecting the **Connect** menu displays the following options:

| | |
|-------------------------------|---|
| <u>S</u>etup: | the communication port for transmissions. |
| <u>D</u>ial: | a Galaxy site or RS232 Interface module. |
| <u>C</u>all Back Dial: | request a Galaxy site to call back to a PC. |
| <u>W</u>ait for Call: | from a Galaxy site to the PC. |
| <u>H</u>ang up: | from the Galaxy site or RS232 module. |

Program Menu



Selecting the **Program** menu displays the following options:

| | |
|-------------------------------|---|
| <u>C</u>opy Site: | details from a Galaxy panel to the PC. |
| <u>O</u>verwrite Site: | details from the PC to a Galaxy panel. |
| <u>L</u>og Copy: | copies the event log from the Galaxy panel. |
| <u>N</u>ew Password: | assigned to the open site. |
| <u>P</u>rogram Data: | view and modify site file programming data. |
| <u>V</u>iew Log: | of open site file. |
| <u>M</u>imic Panel: | details status of groups and zones |

Section 4: OPERATION

THE FILE MENU

Creating a New Site

The **File|New** option allows a new customer site to be created and the details of the site to be entered. It is not essential to enter information into all the fields. The important fields are **Site Name**, **Remote No.** and **Password**. Use the **Tab** key to move between the fields.

Enter Site Data

Site Name: Honeywell Security
Address: 2 Redwood Crescent
Area: Peel Park Campus
Town/City: East Kilbride Post code: G74 5PA
Tel. Num:
Account:
Galaxy 504
V4.50

Contact:
Title:
Tel. Num 1:
Tel. Num 2:
Remote No.:
Password:
IP Address: 192.0.1.163
Port No.: 10001
Ok
Cancel

Notes:

Site Name: The name (22 alpha-numeric characters maximum) which is displayed at the top of the Galaxy Gold keypad. This must be entered when creating a new site.

Note: The site name is used for the file name for the site, it cannot contain the following characters: / \ . : " ? < > |

Remote No.: The site telephone number (28 digits maximum) to which the Galaxy Telecom Module, ISDN Module or RS232/Modem combination is connected. This must be entered when creating a new site. (Not required for RS232 connection).

Password: The password **must not** be entered when the site is created. Entering a password prevents Galaxy Gold from establishing contact with the Galaxy site. To assign a password to a Galaxy site refer to the **Program|New Password** option.

IP Address: The IP Address (AAA.BBB.CCC.DDD) of the Ethernet module connected to the Galaxy control panel.

Port No.: The IP port number of the Ethernet module connected to the Galaxy control panel. The default is 10001. If connecting to a Galaxy Ethernet module this value should always be set to 10001.

Note: Entering data into the remaining fields is optional. This information is of most use when Galaxy Gold is used in conjunction with Alarm Monitoring

Click **OK** or press **ENTER** to save the details and to open the site. The Galaxy Gold keypad screen displays the site file name on the title bar.

Opening an Existing Site

Site Selection

Select Site to Open:
Internazionale Immobiliare.DAT

AGG plc.DAT
Andorra Vintage Cars.DAT
CN Warehouse.DAT
Costello Print Ltd.DAT
Darkini Inc.DAT
Enzo's Bakery.DAT
Five Angels Security Ltd.DAT
Genco Olive Oil Co.DAT
Internazionale Immobiliare.DAT
MMCPL Ltd.DAT
NFG International.DAT
Pasquel Computers.DAT
PPPP Solicitors.DAT
Santano Imports Ltd.DAT
VARlicor Medical Systems.DAT

Current Directory: C:\Ademtech\GalGold\SiteData
Ok
Cancel

The **File|Open** option allows an existing site to be selected and opened. The site names are listed in alphabetical order in the **Site Selection** window and are selected by:

- Pointing and clicking the mouse on the site name and then clicking on the **OK** button. Double clicking on the site name also selects the site. Clicking on the vertical scroll bar arrows lists other site names, not displayed in the window
- Using the **↑** and **↓** keys to highlight the required site and pressing **ENTER**.
- Enter the first letters of the required site name, to move to the required site and press **ENTER**.

A window is displayed to confirm the choice of site to be opened. Click **OPEN** or press **ENTER** to confirm the selection and to open the site. The Galaxy Gold keypad screen displays the site name on the title bar.

Modifying Site Details

The **File|Modify** option allows the details of a file which is open, but not connected, to be modified. When this option is selected the **Enter New Site Data** screen is displayed, as shown below. Use the **Tab** key to move between the fields and make the required changes. Once all changes have been made press **ENTER** to save the new details.

This option can be used to remove the password information (assigned to a Galaxy control panel using the **Program|New Password** option) from the site details. This increases the security of the system as the user is prompted by Galaxy Gold to manually enter the site password each time the Galaxy control panel is dialed.

The screenshot shows the 'Enter Site Data' dialog box. The title bar is blue and contains the text 'Enter Site Data'. The main area is light beige and contains several input fields. The 'Site Name' field contains 'Honeywell Security'. The 'Address' field contains '2 Redwood Crescent'. The 'Area' field contains 'Peel Park Campus'. The 'Town/City' field contains 'East Kilbride' and the 'Post code' field contains 'G74 5PA'. There are also fields for 'Tel. Num', 'Account', 'Contact', 'Title', 'Tel. Num 1', 'Tel. Num 2', 'Remote No.', 'Password', 'IP Address' (containing '192.0.1.163'), and 'Port No.' (containing '10001'). On the right side, there is a small icon of a Galaxy control panel, the text 'Galaxy 504', and 'V4.50'. There are 'Ok' and 'Cancel' buttons. At the bottom, there is a 'Notes' field.

The Enter Site Data window indicates the type and version of the Galaxy control panel located at this site once the site has been copied or overwritten.

Deleting a Site

The **File|Delete** option allows a site file (closed, opened or connected) to be deleted from the PC. The site file is deleted by selecting the required site name from the list displayed in the **Site Selection** window (refer to Opening an Existing Site for details) and clicking **OK** or pressing **ENTER**. A window is displayed to confirm the choice of site to be deleted. Click **DELETE** or press **ENTER** to confirm the selection or click **Cancel** or press **esc** to abort the deletion. If the site to be deleted is currently open, then Galaxy Gold returns to the default Galaxy Gold keypad screen.

Once a site file is deleted, all the information recorded for that site (including the log and the program data) is completely erased from the PC.

Important: Deleted site details **cannot** be recovered.

Duplicating an Existing Site

The **File|Duplicate Site** option allows an existing site file to be duplicated. This is useful when a new Galaxy control panel with similar programming details to an existing site is required. The duplicate site data can be overwritten to the new Galaxy control panel, saving a great deal of programming time.

The site file to be duplicated is selected by highlighting the required site name from the list of available sites (refer to Opening an Existing Site for details) and clicking **OK** or pressing **ENTER**. The Confirm Choice of Site window is displayed, allowing users to confirm the selected site for duplication. Click on **DUPLICATE** or press **ENTER** to confirm. To modify the duplicate site name and detail, select **File|Modify**. (Refer to Modify Site Details for further information).

Note: The site file event log is not duplicated using this option. Refer to the **Program|Copy Log** option for details on copying an on-line Galaxy panel event log.

Active User (Galaxy Password Protection Screen)

The **File|Active User** option permits valid users, access to Galaxy Gold. It also permits changes of users without closing Galaxy Gold. Clicking **Cancel** removes the window but denies access to the all Galaxy Gold features except **File|Exit** and **File|Active User**. This allows Galaxy Gold to remain open while the PC is left unattended and increases the security of the system.

Backup Site and Restore Site

Files stored in the current working directory can be copied into new directories to create a backup site and restored back to the current working directory by simply following normal Windows Explorer procedures. The file name for the site data is <site name>.dat and for the log data is <site name>.log

Note: For advice on using Windows Explorer refer to Windows Explorer Help.

Changing Working Directories



Use the directory navigator to select the directory of your choice.

Warning : Invalid Data Directory

The invalid directory error message is displayed when the directory selected contains the file REMDATA.DAT. The file REMDATA.DAT can be created by the Galaxy Gold application V4.20 using this directory or the Site Conversion application using the directory for older site files.

This warning prevents older Galaxy Gold files being used with the new 32-bit applications and causing possible corruption.

Exiting Galaxy Gold

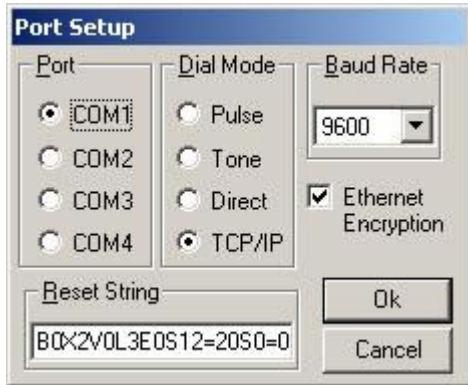
The **File|Exit** option closes Galaxy Gold and returns to the Windows Program Manager. If Galaxy Gold is connected to a Galaxy control panel when this option is selected, the communication is terminated prior to Galaxy Gold closing.

THE CONNECT MENU

Setup

The **Connect|Setup** option allows the Galaxy Gold software to be configured for communication with the Galaxy control panel via one of the communication options.

Before Galaxy Gold can be used to perform any remote servicing functions, the communication channel, through which information is transferred between the PC and the Galaxy site (or RS232 Serial Interface Module) must be setup. The setup is programmed using the **Connect|Setup** option. Once this option has been programmed, the settings are saved until changed by the user.



1. Select the **Connect|Setup** drop down menu option. The **Port Setup** window is displayed.
2. If using a modem or direct connection using the **↑** and **↓** keys or the mouse, select the **Port** that the PC modem or RS232 Interface Module is connected to. The default setting is **COM2**.
3. Press **ENTER** or **Tab** to move to the **Dial Mode** option.
4. Use the **↑** and **↓** keys or the mouse to select the correct dial mode for the system. The setting depends on whether the connection is being made via a modem, Ethernet network card or RS232 Interface Module:
 - a. **PC Modem:** Select **Pulse** or **Tone** (the dial type of the telephone exchange to which the PC modem is connected). The default setting is **Pulse**.
 - b. **RS232:** Select **Direct**.
 - c. **Ethernet:** Select **TCP/IP**.
5. Press **Tab** to move to the **Baud Rate** option.
 - a. **PC Modem:** 1200 (Default setting - normally communicating via a Galaxy Telecom or ISDN Module). If the system configuration is such that communication is not via the telecom module, then another baud rate may be required.
 - b. **RS232:** The **Baud Rate** must be the same as the baud rate settings on the RS232 Interface Module.
 - c. **Ethernet:** Not applicable
6. Press **Tab** to move to the **Ethernet Encryption** option. Using the space bar enable or disable the option. If enabled communication with Ethernet modules which support encryption will be encrypted. Communication with modules which do not support encryption will continue to be non encrypted.
7. Press **ENTER** or click **OK** to save the settings. These settings are retained until changed by a user.

Note: The **Connect|Setup** options described are normally sufficient for most modem configurations. However, if there are any special modem configuration requirements, the **Modem Reset String** can be modified. Refer to the modem documentation for details. A list of tested modems and the associated reset strings can be found in appendix B at the end of this document.

Dialing a Site

The **Connect|Dial** option allows the PC to connect with a remote Galaxy control panel via the telecom module, ISDN Module, Ethernet Module or a local Galaxy control panel via the RS232 Interface Module.

1. Open the site file that is to be dialed.
2. Select **Connect|Dial**.
3. If there is no Password for the site in the Enter New Site Data window, Galaxy Gold prompts for a password to be entered. Enter the password for the site and click **OK** or press **ENTER**.



4. Galaxy Gold begins the procedure for connecting with the selected Galaxy control panel.

Control Panel Software Version Checker

Galaxy Gold checks the type (i.e. Galaxy 8, 60, 16+, etc) of version (Vx.xx) of Galaxy control panel, which to which it is attempting to connect.

If the control panel does not feature all the programming options available in Galaxy Gold the following message is displayed:



If the control panel software does not support all the features in the Galaxy Gold software the following message is displayed:



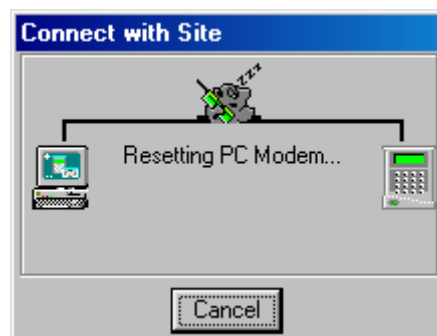
If an incompatibility warning is displayed, the user should arrange for panel or Galaxy Gold upgrades to ensure full feature support.



A full list of Galaxy panel and Galaxy Gold version compatibility is included in appendix C of this document.

Connect with Site

The Connect with Site window displays the status and progress of the dialing routine:

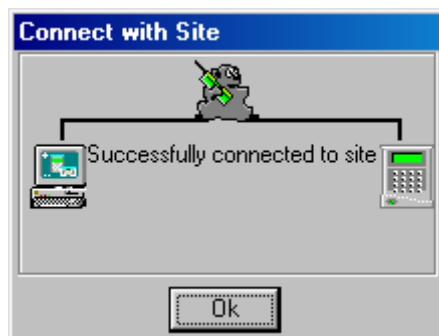


The following sequence of messages is displayed:

- **Resetting PC Modem** - to the configuration determined by the **Modem Reset String** programmed in the **Connect|Setup** option.
- **Dialing Site** - dials the **Remote No.** in the **Enter New Site Data** window.
- **Checking Password** - confirms that the Galaxy control panel password matches the password sent from the Galaxy Gold.

Refer to Appendix A for a full list of Galaxy Gold messages, including communication failures.

When the **Successfully connected to site** message is displayed, click **OK** or press **ENTER**. Galaxy Gold Keypad window changes from the flashing row of asterisks (★) to the current display of the Galaxy control panel.



The Galaxy control panel can now be:

- Remotely Serviced** – using both the mouse and the keypad by users with the **Key Entry Attribute** enabled.
- Programming copied to the PC** – all of the Galaxy programming data can be copied and stored in the PC under the site name.
- Programming overwritten by the PC** -the Galaxy control panel programming data can be overwritten by the data stored in the PC under the site name.
- Event Log copied to the PC** – the galaxy panel event log can be copied to the PC for viewing and/or printing.
- MicroMAX Log copied to the PC** - the Access Doors card log can be copied to the PC for viewing and/or printing.

Call Back Dialing

The **Connect|Call Back Dial** option allows the Galaxy Gold to dial a Galaxy control panel, instruct the control panel to initiate a call, establishing connection between the site and a PC with Galaxy Gold installed, and disconnect from the control panel. The Galaxy control panel then selects and dials the telephone number as instructed by Galaxy Gold.

Note: The **Call Back Number** is programmed on the Galaxy control panel using the **Communication** function - menu option 56.1.12.2.3

1. Open the site file that is to initiate the call.
2. Select **Connect|Call Back Dial**.
3. If there is no **Password** for the site in the **Enter New Site Data** window, Galaxy Gold prompts for a password to be entered. Enter the password for the site and click **OK** or press **ENTER**.
4. The **Call Back Dial** window prompts the user to **Enter Call Back digit**. This can be entered via the keyboard or by clicking on the arrow in the digit box. The digit must lie in the range of 1 to 5, and must be one of the **Call Back** numbers programmed on the Galaxy control panel. Click **OK** or press **ENTER**.

Note: The **Call Back Digit** may initiate a call from the Galaxy control panel to another PC with Galaxy Gold installed. Refer to **Wait For Call** for details of enabling the other PC to receive an incoming call.

Galaxy Gold begins the procedure for connecting with a remote Galaxy control panel. The **Connect with Call-Back Site** window displays the status and progress of the dialing routine. The messages displayed follow the **Connect|Dial** sequence. Once Galaxy Gold connects with the remote control panel, the following messages are displayed:

- Transmitting Call Back Number** - the Galaxy control panel is instructed on which **Call Back Number** to dial.
- Disconnecting from Site** - Galaxy Gold terminates the connection to the Galaxy control panel.
- Waiting for panel to call** - Galaxy Gold enables the ready to receive incoming calls status.

Galaxy Gold remains in this state until:

- a. The Galaxy control panel returns the call, or
- b. The **Cancel** button is clicked, or
- c. The time-out occurs (no call has been received within five minutes of the waiting period beginning). The message **No call back. Aborting** is displayed.

If the **Call Back Digit** transmitted to the Galaxy control panel corresponds to the telephone number of the PC initiating the **Call Back Dial**, then, when the Galaxy control panel dials the PC, the following message is displayed:

- Call from site answered Checking password** - confirms that the Galaxy control panel password matches the Galaxy Gold site password.

When the **Successfully connected to site** message is displayed, click **OK** or press **ENTER**. The Galaxy Gold Keypad window changes from the flashing row of asterisks (★) to the current display of the Galaxy control panel, indicating that Galaxy Gold is successfully communicating with the panel.

Wait For Call Back

Selecting the **Connect|Wait for Call** option enables Galaxy Gold to receive incoming calls. This allows a Galaxy control panel to initiate a call to the PC and establish connection with Galaxy Gold.

The Galaxy control panel can be instructed to initiate the call by:

- Another PC, using the **Call Back Dial** option, or
 - The Galaxy control panel, using the **Remote Access** function - menu option 47 (software version 1.04 and above).
- Refer to the Galaxy Engineering Manual for programming and operational details.

Note: Galaxy Gold must be in the **Waiting for panel to call** state for a Galaxy control panel to successfully establish the connection when initiating dialing.

1. Open the site file for the Galaxy control panel that is to initiate the call.
2. Select **Connect|Wait for Call**.
3. If there is no **Password** for the site in the **Enter New Site Data** window, Galaxy Gold prompts for a password to be entered. Enter the password for the site and click **ENTER**.

The **Connect with Call-Back** window is opened and displays the **Waiting for panel to call** message. Galaxy Gold remains in this state until:

- a. The Galaxy control panel returns the call, or
- b. The **Cancel** button is clicked, or
- c. The time-out occurs (no call is received within five minutes of the waiting period beginning). The message **No call back. Aborting** is displayed.

When the Galaxy control panel dials the PC, the **Call from site answered. Checking Password** message is displayed.

When the **Successfully connected to site** message is displayed, click **OK** or press **ENTER**. The Galaxy Gold Keypad window is changes from the flashing row of asterisks (★) to the current display of the Galaxy control panel, indicating that Galaxy Gold is successfully communicating with the panel.

Remote Servicing

Once the connection between the PC and the Galaxy control panel has been successfully established, the site can be remotely programmed or serviced as required. The Remote Servicing user PIN defaults to **543210** and is restricted to use with Galaxy Gold software. Both the mouse and the PC keyboard offer the full range of control over the Galaxy Gold Keypad. The Galaxy Gold Keypad operates exactly the same as an on-site keypad and there are no limitations in the programming of the Galaxy control panel.

Note: If the Remote Access Mode (COMMUNICATIONS menu option 56, 1, 12, 2) is changed to **Mgr authorise** or **call back** during remote servicing, further access to the Galaxy control panel is denied. Galaxy Gold must hang up the connection to the panel.

Hanging Up From the Galaxy Control Panel

Clicking on the **Connect|Hangup** option disconnects Galaxy Gold from the remote Galaxy control panel. The Galaxy Gold site remains open on the PC.

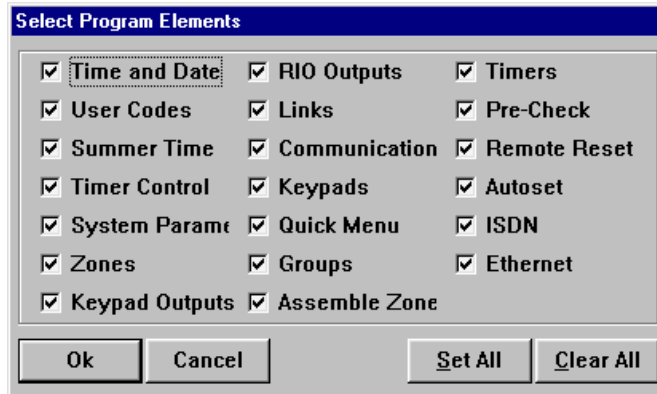
THE PROGRAM MENU

Copying Site Data

The **Program|Copy Site** option allows the programmed data to be copied to the PC from the Galaxy control panel or the RS232 Interface Module. The data copied is stored in the open Galaxy Gold site file and can be viewed and modified using the **Program|Program Data** option.

Note: The Galaxy control panel event log is not copied to the PC using this option. Refer to the **Program|Copy Log** option for details on copying the Galaxy control panel event log.

When this option is selected the **Select Program Elements** window is displayed. This allows any or all of the programmed data elements to be selected for copying to the PC. Elements with a checked box (☑) are copied.



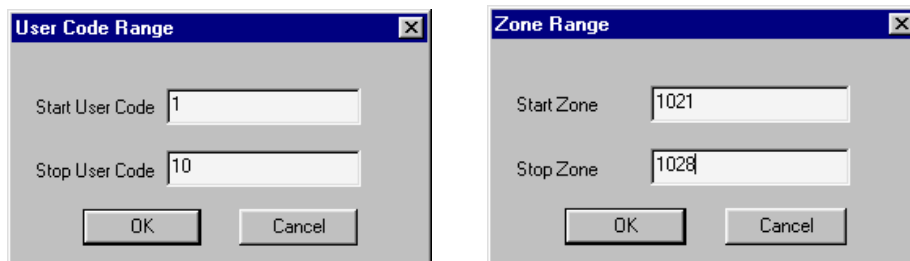
Selection is made using the:

- Mouse** - point and click to select/deselect the required elements to be copied. Click on **OK** to begin copying the selected elements.
- Keyboard** - use the **→** and **←** keys to move to the required element and press the **Spacebar** to select/deselect. Press **ENTER** to begin copying the selected elements

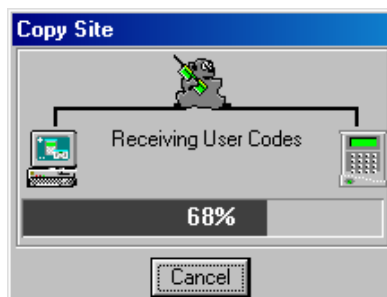
The **Set All** button selects all of the elements for copying. The **Clear All** button deselects all of the elements, allowing the user to quickly select a small number of elements to be copied.

For certain program elements a range of data can be selected for copying to Galaxy Gold. The affected options are User Codes, Zones, RIO Outputs and Links. To select a range of data from any of these options click on the ☑ button until it is greyed out. The range select entry window will be displayed for each element. Enter the range to be copied or overwritten for the selected element and press **OK**.

Note: When using the range option for older panels use the range indexes shown in Appendix F for each element.



When all the required elements have been selected press **OK** and the data transfer will begin.



The transfer of programming data is made in the sequence of elements selected. The progress of each element is

displayed as a bar in the **Copy Site** window, accompanied by a percentage completion figure. When all the specified elements have been copied, the **Transfer Complete** message is displayed. Click **OK** or press **ENTER** to clear this window.

Overwriting Site Data

The **Program|Overwrite Site** option allows the programmed data on the PC to overwrite the programming data on the Galaxy control panel or the RS232 Interface Module. The data to be copied is stored in the open Galaxy Gold site file and can be viewed and modified using the **Program|Program Data** option.

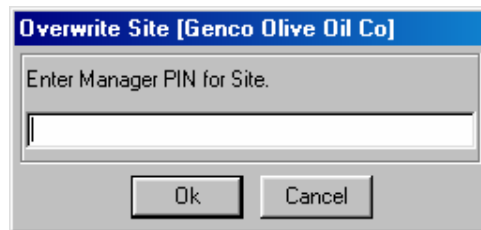
When this option is selected the **Select Program Elements** window is displayed. This allows selection of the programmed data elements to be overwritten on the Galaxy control panel or RS232 Interface Module. Elements with a checked box (☑) are overwritten. Selection is made using the:

- mouse** - point and click to select/deselect the required elements to be overwritten. Click on **OK** to begin overwriting the selected elements.
- keyboard** - use the **←** and **→** keys to move to the required element and press the **Spacebar** to select/deselect. Press **ENTER** to begin overwriting the selected elements.

The **Set All** button selects all of the elements for overwriting. The **Clear All** button deselects all of the elements, allowing the user to quickly select a small number of elements to be overwritten.

When overwriting the site data the range selection options are available for codes, zones, outputs and links in exactly the same way as copying site data.

Notes: If the **User Codes** element is selected to be overwritten, when **ENTER** is pressed or **OK** clicked, Galaxy Gold prompts the user to enter the Manager PIN for the site being overwritten.



If the PC is transmitting the programming data to an RS232 Interface Module, then:

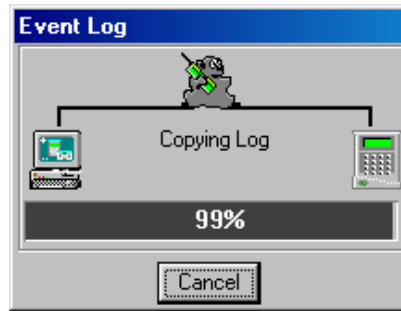
- If the Green **COPY** LED (LD3) is lit, the Manager PIN for the Galaxy site currently open **must** be entered.
- If the Green **COPY** LED (LD3) is **not** lit, press **ENTER**.

This is to ensure that Galaxy control panel Manager authorisation for modifying site user codes has been given. If the PIN entered does not match the Manager PIN for the Galaxy control panel, then **Program|Overwrite Site** option is terminated.

The transfer of programming data is made in the sequence of elements selected. The progress of each element is displayed as a bar in the **Overwrite Site** window, accompanied by a percentage completion figure. When all the specified elements have been copied, the **Transfer Complete** message is displayed. Click **OK** or press **ENTER** to clear this window.

Copying the Site Log

The **Program|Log Copy** option copies the event log of the on-line Galaxy control panel or the details stored in the RS232 Interface module to the PC. This is stored in the open Galaxy Gold site and can be viewed using the **Program|View Log** option.



From an On-Line Galaxy Site

If the **Program|Log Copy** option is selected when the connection to the Galaxy control panel is via a Galaxy Telecom Module, RS232 Interface Module, ISDN or Ethernet Module, then any new events in the event log are appended to the existing copy of the log stored on the PC. The Galaxy Gold site can store up to 1000 events. If the PC log exceeds 1000 events, the earliest events are removed as the new events are stored. If no previous log exists, then the entire log is copied.

From an RS232 Interface Module Containing Galaxy Site Details

If the **Program|Log Copy** option is selected when the connection is to an RS232 Interface Module that has been used to copy a Galaxy control panel, then any existing log stored on the PC for the Galaxy control panel is overwritten by the current log. All previous events stored on the PC for this site will be erased.

Copy the MicroMAX Log

The **Program|MAX Log Copy** option copies the access doors log of the on-line Galaxy control panel to the PC. This is stored in the open Galaxy Gold site and can be viewed using the **Program|View MAX Log** option.

From an On-Line Galaxy Site

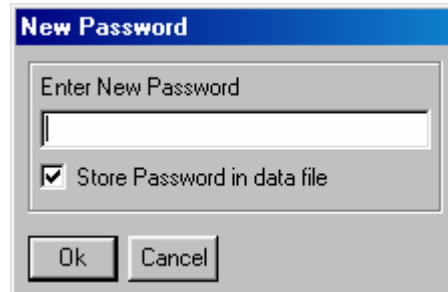
If the **Program|MAX Log Copy** option is selected when the connection to the Galaxy control panel is via a Galaxy Telecom Module, RS232 Interface Module, ISDN or Ethernet Module, then any new events in the access doors log are appended to the existing copy of the log stored on the PC. The Galaxy Gold site can store up to 1000 events. If the PC access doors log exceeds 1000 events, the earliest events are removed as the new events are stored. If no previous access doors log exists, then the entire access doors log is copied.

Assigning and Changing the Site Password

The **Program|New Password** option allows the password of the Galaxy control panel (either on-line or stored on an RS232 Interface Module) to be changed. Any alpha-numeric password can be entered.

Note: The site password is case-sensitive.

Enabling the **Store password in data file** option, updates the **Password** field in the **Enter New Site Data** window. If this option is enabled () , Galaxy Gold does not prompt for the site password to be entered manually by the user when the **Connect|Dial**, **Connect|Call Back Dial** or **Connect|Wait for Call** options are used.



Note: Keeping Galaxy control panel passwords separate from the PC increases security.

Viewing and Modifying Site Program Data

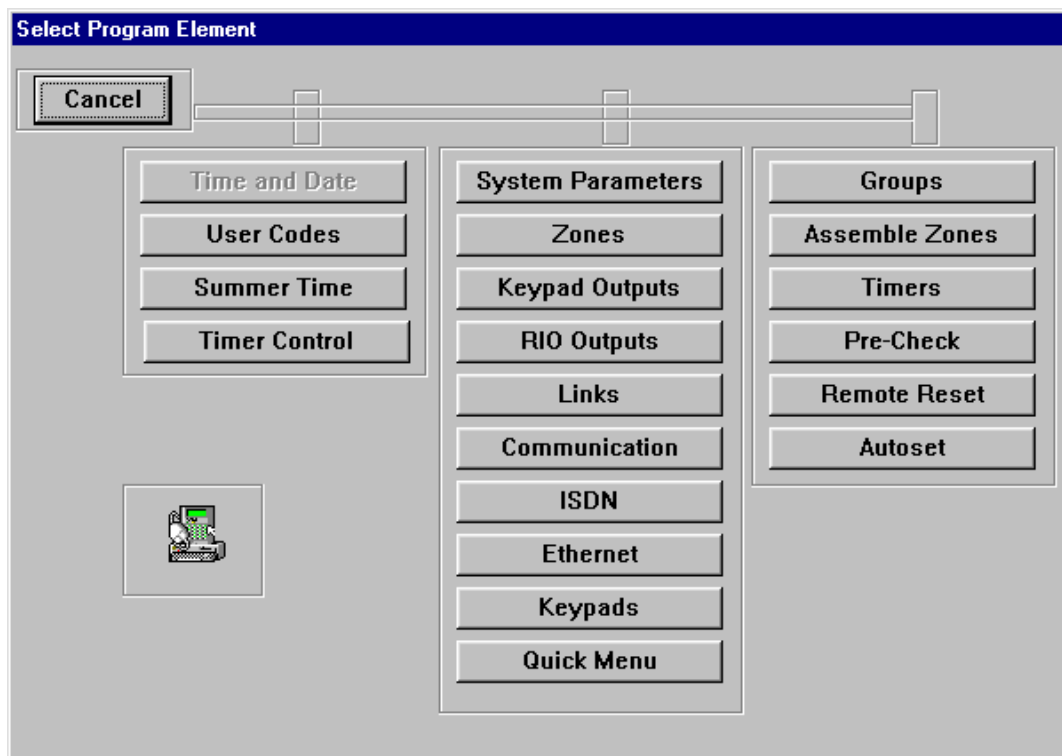
The **Program|Program Data** option allows:

1. Programmed data copied from a Galaxy control panel, using the **Program|Copy Site** option, to be viewed and modified.
2. A newly created Galaxy Gold site to be populated with programming data.

This markedly increases the ease with which a Galaxy panel can be programmed and greatly reduces the programming time required.

On selecting this option, the **Galaxy Gold Program** window is opened and the 17 programming elements are displayed as window icons. To select a programming element double-click on the required icon. The element window is opened.

The programming elements can be displayed as a tree-and branch menu structure. To display the menu structure, select the **File|Open** option from the menu bar. This duplicates the format of the Galaxy panel menu and may be more easily recognised and followed by users who have experience of programming Galaxy panels using keypads.



- To select a programming element:
- click on the required element, or
 - move to the required element using the **Tab** key and press **ENTER**.

| User Codes | | | | | | | | | | | | | |
|------------|------|------|-----|---|---|-------|--------|---|---|------|-------|---|---------------------|
| Num | Mode | Name | PIN | # | * | Level | Timers | A | B | Dual | Temp. | * | Groups |
| 1 | USER | USER | | | | 3 | | | | | 0 | | 1 2 3 4 5 6 7 8 9 0 |
| 2 | USER | USER | | | | 3 | | | | | 0 | | 1 2 3 4 5 6 7 8 9 0 |
| 3 | USER | USER | | | | 3 | | | | | 0 | | 1 2 3 4 5 6 7 8 9 0 |
| 4 | USER | USER | | | | 3 | | | | | 0 | | 1 2 3 4 5 6 7 8 9 0 |
| 5 | USER | USER | | | | 3 | | | | | 0 | | 1 2 3 4 5 6 7 8 9 0 |
| 6 | USER | USER | | | | 3 | | | | | 0 | | 1 2 3 4 5 6 7 8 9 0 |
| 7 | USER | USER | | | | 3 | | | | | 0 | | 1 2 3 4 5 6 7 8 9 0 |
| 8 | USER | USER | | | | 3 | | | | | 0 | | 1 2 3 4 5 6 7 8 9 0 |
| 9 | USER | USER | | | | 3 | | | | | 0 | | 1 2 3 4 5 6 7 8 9 0 |
| 10 | USER | USER | | | | 3 | | | | | 0 | | 1 2 3 4 5 6 7 8 9 0 |
| 11 | USER | USER | | | | 3 | | | | | 0 | | 1 2 3 4 5 6 7 8 9 0 |

Click on the appropriate boxes to select the required programming for each of the displayed options and fields. Alternatively, use the **Tab** key to move to the required options and fields and enter the required program information using the PC keyboard:

- A checked option box () indicates that the option is enabled.
- Black text indicates enabled, normal text indicates disabled.
- To save the programming data, select **File|Save**. Alternatively, if the programming element window is closed without saving the changes, Galaxy Gold prompts the user to save the programming data.
- A detailed explanation of the programming options of a Galaxy panel is outside the scope of this instruction guide. Refer to the Galaxy Engineering Manual for full details on the programming of Galaxy panels.

Note : When entering user codes, if less than 4 digits are entered Galaxy Gold pads the entered number with 0's to generate a 4 digit code i.e. 11 becomes 1100

Useful Hints: programming zone and output data can be made easier by using the shortcut keys listed below:

- When programming zones & outputs in the links menu the address can be selected quickly by using the +/- keys to scroll the zone/output number, the ./, keys to scroll through the RIO number and the </> keys to scroll through the line number.
- When programming zone and output functions the desired function can be selected quickly by typing in the first number of the function, for example Keyswitch (39) enter 3. Followed by the + key to select the desired function.
- When programming descriptions the following key combinations can be used to aid data input

| | |
|-----------------------|------------------------|
| Ctrl + Insert | Copy the selected text |
| Shift + Insert | Paste copied text |
| Delete | Delete selected text |

Panel Type

This option allows the specific control panel type to be selected for each site. When this option is selected, Galaxy Gold lists the appropriate menus and options for the selected control panel type. If the panel programming has already been copied to Galaxy Gold, the panel version number is also displayed in this option.

To access the **Panel Type** option: select Program from of the menu bar of the Galaxy Gold keypad, click on **Program** in the drop down menu. Choose **File** from the menu bar of the Galaxy Gold program window then click on **PanelType**. Select the control panel type and the appropriate menus are displayed for each programming option. When selection is complete click on **OK**.

RIOs Present

This option allows the user to select the number of RIOs connected to each AB line for each specific site; this removes extraneous programming information and improves the ease of programming.

To access the **Rios Present** option: select Program from the menu bar of the Galaxy Gold keypad, click on **Program** in the drop down menu. Choose **File** from the menu bar of the Galaxy Gold programming window then click on **Rios Present**. Each AB line available on the panel type can be viewed by selecting **Next** or **Prev**. Add or remove RIOs by clicking on the RIO number. A black tick indicates that the RIO address has been programmed as having a RIO present. When selection is complete click on **OK**.

Print

When selected, this option allows all or some programming information to be printed.

To access the **Print** option: select Program from the menu bar of the Galaxy Gold keypad, click on **Program** in the drop down menu. Choose **File** from the menu bar then click on **Print**. Select the information to be printed; clicking on the corresponding box toggles each Program Element between selection and de-selection, a black tick in the box to the left of the Program Element indicates that the option has been selected for printing. When selection is complete click on **OK**.

Viewing the Site Log

The **Program|View Log** option allows the event log of the site file (copied from the Galaxy control panel using the **Program|Copy Log** option) to be viewed and printed. The log can be viewed when the Galaxy control panel is disconnected from the PC.

On selecting this option, the **Event Log** window is opened and all of the events in the site log can be viewed. The following details on each event are displayed:

Time - that the event occurred

Date - that the event occurred

Event - the type of event

Zone - the address of the zone that activated the event if applicable

Code - the user whose PIN activated the event if applicable

Module - the RIO or keypad on which the event took place if applicable

Groups - the groups affected by the event

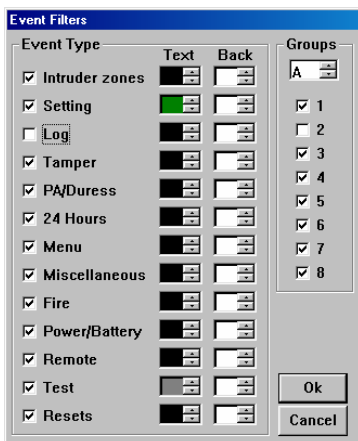
Descriptor - the zone or user descriptor associated with the event if entered at the panel

The most recent events are displayed first:

- Pressing the **↑** or **PgUp** key displays earlier events.
- Pressing the **↓** or **PgDn** key scroll back through to the more recent events.

Filtering Displayed Events

Select the **Filters** menu from the **View Log** menu bar allows the user to specify the event categories and system groups to be viewed. The categories and groups are selected by clicking on the required box. A checked option box () indicates that the option is enabled.



The text (foreground) and background colour of each event category to be viewed can be specified by clicking on the arrows in the colour boxes adjacent to each event category. This allows the different categories of events to be readily identified when multiple event types are displayed. The colours can also be altered by using the **Tab** key to move to the relevant colour boxes and pressing the **↓** and **↑** keys.

When the event categories to be viewed and the foreground and background colours have been selected, click **OK** or press **ENTER**. The most recent events contained in the log (as specified in the **View Log** window) are displayed. If there are more events than can be displayed on a single screen, use the **PgUp** and **PgDn** keys to scroll through the screens.

Events from specific groups can only be selected or deselected by enabling or disabling the group option.

Printing the Event Log

Printing the Complete Event Log:

Select **File|Print** to print out the events, which are contained in the copied event log. This takes into account the **File|Filter** settings of the log.

Printing a Single Event Log Page:

The events, displayed at any one time on screen, can be printed by selecting the **Print Single Page** option.

Viewing the MicroMAX Card (Access Doors) Log

The **Program|View MAX Log** option allows access door log of the site file (copied from the Galaxy control panel using the **Program|Copy MAX Log** option) to be viewed and printed. The log can be viewed when the Galaxy control panel is disconnected from the PC.

On selecting this option, the **MAX Event Log** window is opened and all of the events in the site log can be viewed. The following details on each event are displayed:

Time - that the event occurred

Date - that the event occurred

Event - the type of event

Code - the user whose card/fob/tag activated the event if applicable

Module - the MAX or MicroMAX on which the event took place if applicable

Groups - the groups affected by the event

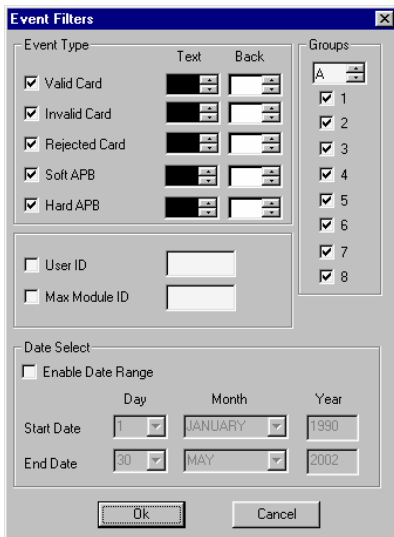
Description - the user descriptor associated with the card user who activated the event

The most recent events are displayed first:

- Pressing the **↑** or **PgUp** key displays earlier events.
- Pressing the **↓** or **PgDn** key scroll back through to the more recent events.

Filtering Displayed Events

Select the **File|Filters** menu option to specify the event categories, system groups, user id, module id and date range to be viewed. The categories and groups are selected by clicking on the required box. A checked option box () indicates that the option is enabled.



The text (foreground) and background colour of each event category to be viewed can be specified by clicking on the arrows in the colour boxes adjacent to each event category. This allows the different categories of events to be readily identified when multiple event types are displayed. The colours can also be altered by using the **Tab** key to move to the relevant colour boxes and pressing the **↓** and **↑** keys.

When the event categories to be viewed and the foreground and background colours have been selected, click **OK** or press **ENTER**. The most recent events contained in the log (as specified in the **View MAX Log** window) are displayed. If there are more events than can be displayed on a single screen, use the **PgUp** and **PgDn** keys to scroll through the screens.

Events from specific groups can only be selected or deselected by enabling or disabling the group option.

Printing the MAX Log

Printing the Complete MAX Log:

Select **File|Print** to print out the events, which are contained in the copied event log. This takes into account the **File|Filter** settings of the log.

Printing a Single MAX Log Page:

The events, displayed at any one time on screen, can be printed by selecting the **Print Single Page** option.

Assigning and Modifying User Attributes

The **Program|Users** option allows Users to be created, modified and deleted.

Note: This option is not available when Galaxy Gold is connected to a site.

Creating New Users

Select the **Program|Users** option and click on the **Create** button or press **ALT + C**. The **User Details** window is displayed. This allows the **User Name**, **Password** and **Attributes** to be assigned to the new user.

The **User Name** and **Password** require to be entered to clear the **Active User Code** screen displayed on starting Galaxy Gold or when the **File|Active User** option is selected.

The **Attributes** determine the Galaxy Gold functions that each user has access to. If the function is enabled (displayed in the adjacent box), then the option is available to the user. If it is disabled, then the option remains ghosted (unavailable) to the user at all times. There are ten attributes, these assign the following functionality to the user:

- 1. Open Site** - enables the **File|Open** option, allowing existing Galaxy Gold site files to be opened.
- 2. Create, Modify Site Details** - enables the **File|Create**, **File|Modify**, **File|Delete**, **File|Duplicate**, **File|Directories** and **Program|New Password** options, allowing Galaxy Gold site files to be created and modified.
- 3. Dial Sites** - enables the **Connect|Setup**, **Connect|Dial**, **Connect|Call Back Dial** and **Connect|Wait for Call** options, allowing connections to be established between the Galaxy control panel and the PC.
- 4. Copy Sites** - enables the **Program|Copy Site** option, allowing Galaxy control panel programming data to be copied to the PC.
- 5. Overwrite Sites** - enables the **Program|Overwrite Site** option, allowing Galaxy control panel programming to be overwritten by the PC.
- 6. Local Programming** - enables the **Program|Program Data** option, allowing the programming of the site file stored on the PC.
- 7. Program Codes** - enables the **Program|Users** option, allowing the creation and modification of users and assigning of user attributes.
- 8. Copy Log** - enables the **Program|Copy Log** option, allowing the Galaxy control panel event log to be copied to the PC.
- 9. View Log** - enables the **Program|View** option, allowing the log copied to the Galaxy Gold site to be viewed.
- 10. Key Entries through keypad** - this attribute allows the user to enter information using the Galaxy Gold Keypad. Pointing and clicking on the keypad buttons, or entering the digits via the PC keyboard acts as a key press on the keypad.
- 11. Mimic Panel** - enables the user to use the Mimic Panel option.

When the user name, password and attributes have been selected click OK or press ENTER.

Modifying Existing User Attributes

Select the **Program|Users** option. Using the mouse or the **↓** and **↑** keys select the **User Name** to be modified and click on the **Modify** button or press **ALT+ m**. The **User Attribute** window is displayed. This allows the **User Name**, **Password** and **User Attributes** for an existing user to be modified. The modifications are made in the same manner as a new user is created.

Deleting an Existing User

Select the **Program|Users** option. Using the mouse or the **↓** and **↑** keys select the **User Name** to be deleted and click on the **Delete** button or press **ALT+ d**. A warning screen is displayed to confirm that the correct user is being deleted. If the user is to be deleted, click **OK** or press **ENTER**. To cancel the deletion, click **Cancel** or press **esc**.

Mimic panel

The Mimic Panel option gives users the ability to view graphically, the state of the zones and outputs of the Galaxy RIOs (both onboard and external) and, to a limited extent, modify the control functions of the Galaxy control panel.

Requirements

The Mimic Panel function is available on the following control panels, Galaxy: 8, 18, 60, 128, 500, 504 and 512 (High Security). On the Galaxy 512, the Mimic Panel function is limited to View only mode, for details of View only mode see, 'Using the Mimic Panel function in View only mode'.

Note: The Mimic Panel function is **not** available on the Galaxy 16 and 16 plus.

The Mimic Panel function requires the following hardware and software to be fitted to the Galaxy security system:

- Galaxy control panel must have software version V1.2X or above
- Telecom Module with software V4.XX(E062)/V2.12(E050) or above (for Remote Sites)
- RS232 module with hardware revision Rev. 1.1X or above with software version V1.XX or above (for Local Sites)
- ISDN Module (A211) with V3.00 software and above
- Ethernet Module (E080) with V1.00 software and above.

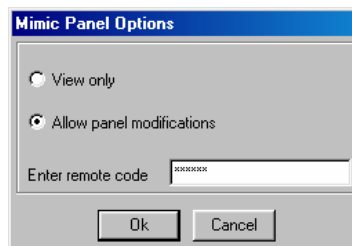
Note : the Mimic Panel function requires a Microsoft Windows compatible mouse connected to the PC.

Prior to using the Mimic Panel function Galaxy Gold must have a site open. Also, the user must have access to the Mimic function. This has to be done by a user with the Program codes attribute enabled. For more details see the Assigning and Modifying User Attributes section of this Manual.

Note: Galaxy Gold should be kept fully up to date with panel programming. This requires the copying of site data to Galaxy Gold after re-programming at the site keypad **and** after data has been overwritten to the site from Galaxy Gold.

Accessing the Mimic Panel function

Once connected to the site, select **Program** from the menu bar of the Galaxy Gold keypad, click on the **Mimic Panel** in the drop down menu, this will bring up the Mimic Panel Options window. The user is presented with a choice of either **View only** mode or **Allow panel modifications** mode (for details of the differences see the following sections). Select the desired mode, (the default is View only). If Allow panel modifications mode is selected (not available on the Galaxy 512) then the remote code for the site must also be typed in to the Enter remote code box; if an invalid code is entered then an invalid code window will appear. Finally click on the OK button to proceed, or the Cancel button to quit.



A window will appear with the message 'Please wait. Synchronising local data with panel.'; again the user may quit by pointing and clicking on the Cancel button.



Using the Mimic Panel function in View only mode

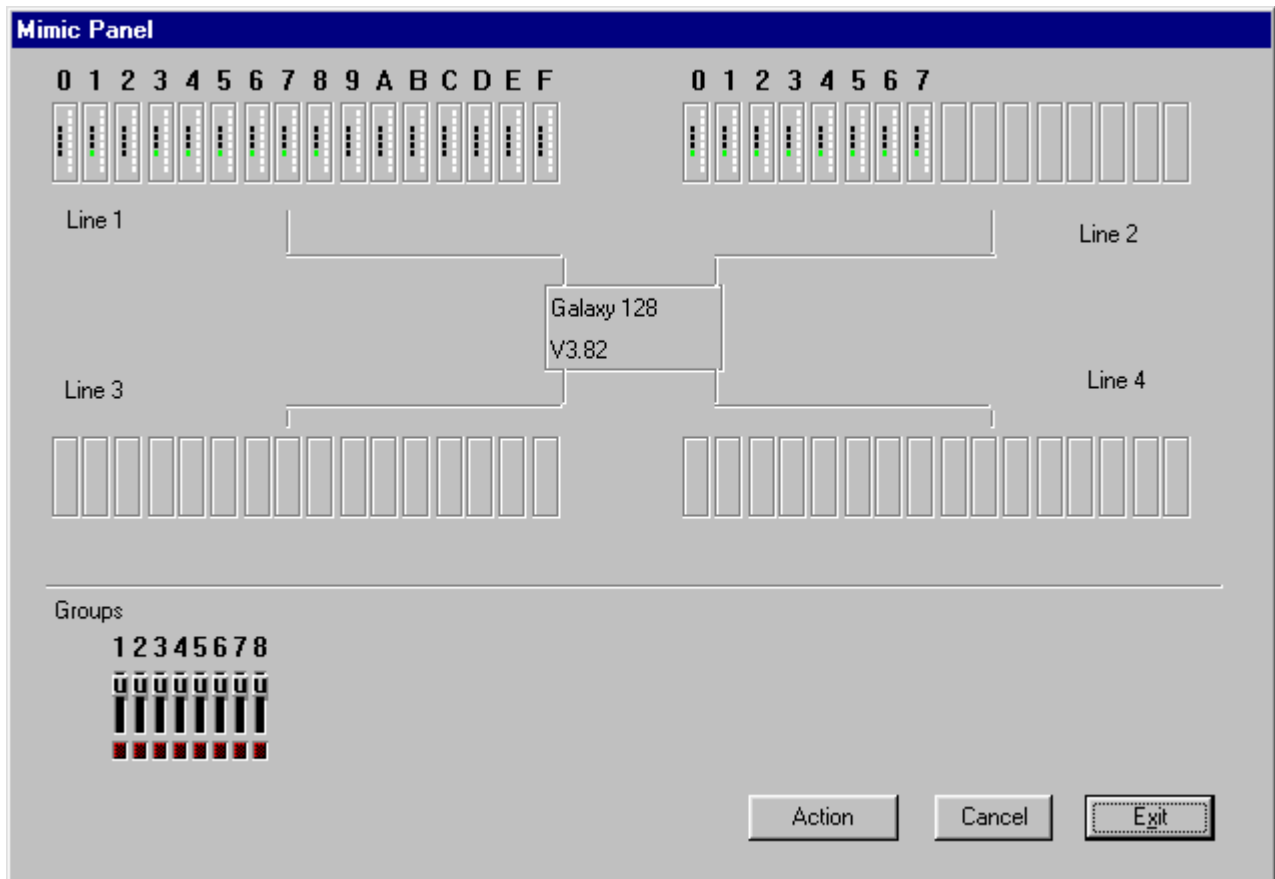
Once the Mimic Panel function has been accessed the user is presented with a graphical representation of the Galaxy control currently on-line. The first display gives a general overview of the Galaxy system. All available AB lines and RIOs are displayed.

Note: This assumes that Galaxy Gold is fully up to date with the Galaxy system configuration.

The set status of the groups is also displayed at the bottom of the display window. When the slider is at the top of a group (and marked with a U) this represents the group being in the Unset state; if the group slider is in the centre (marked with a P) this represents the group being in the Part set state; and if the group slider is at the bottom (marked with an S) this represents the group being in the Set state.

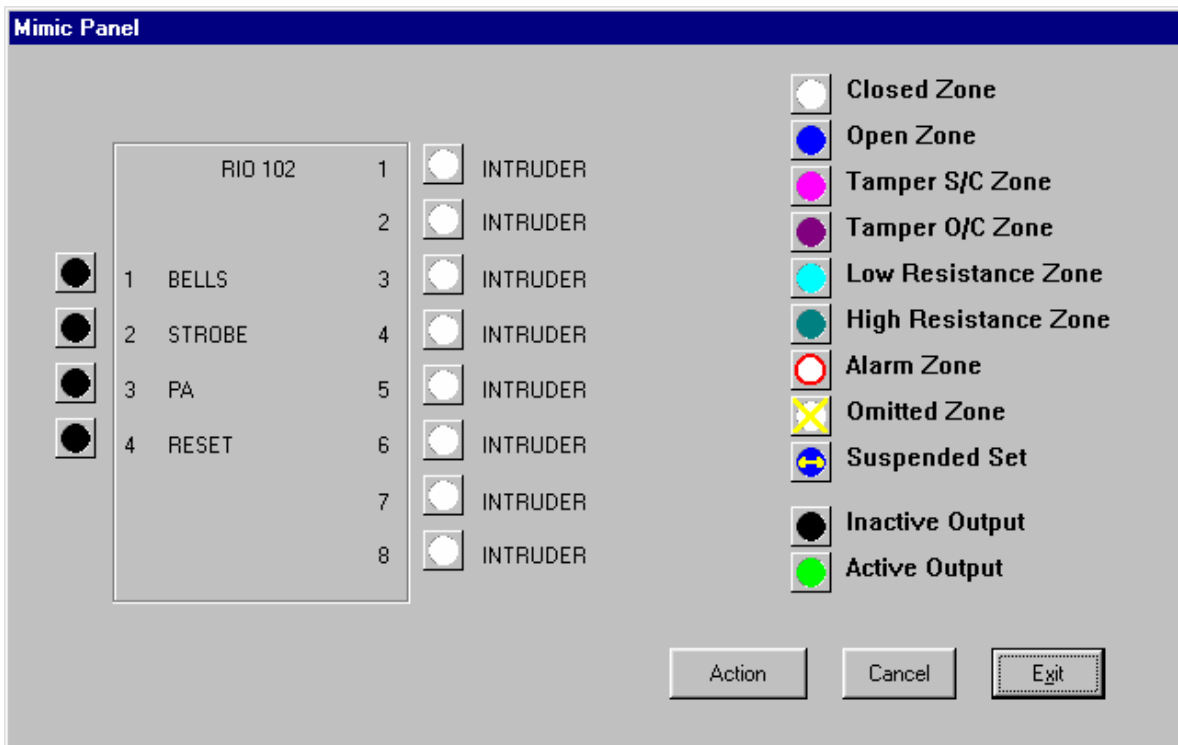
The coloured indicators below the groups (normally coloured dark red) indicate any alarm conditions in each of the groups: a bright red colour indicates an alarm condition, once this has been cancelled it may turn either; blue – which indicates a PA condition in that group, or, purple – which indicates a tamper condition in that group. The PA indicator will remain active until a PA reset has been carried out and the tamper indicator will remain active until a tamper reset has been carried out.

The output and zone status of any Galaxy RIOs on the AB lines are indicated by coloured squares on the blocks representing each of the RIOs. The group of four blocks represents the RIO output statuses numbered one to four from top to bottom. The group of eight blocks represents the zone statuses again numbered from one at the top. The colours of these blocks give details of the states of the outputs and zones. When in View only mode, the Action and Cancel buttons are ghosted and clicking on them has no effect.

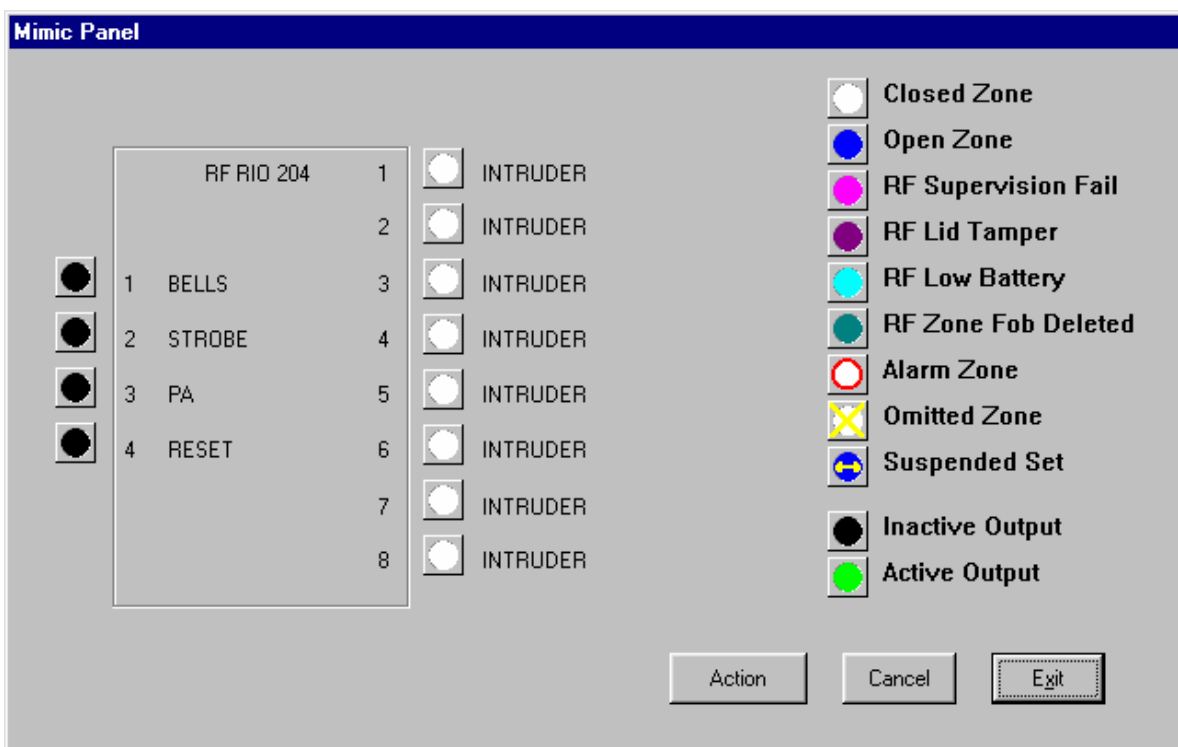


For a better view of the states of the outputs and zones on an individual RIO double click on the desired RIO block.

This gives the user a graphical representation of the status of the RIO selected. The outputs and zones for the RIO are listed with coloured indicators that give details of the state of the outputs and zones, e.g. Open Zone, Omitted Zone, Tamper S/C Zone. There are two zone states that users will not be aware of: Suspended setting denotes a zone that is open during setting of the system that is not a Final, Exit, or Exit/Entry zone type; this condition is indicated by a blue disk (for open zone) with a horizontal yellow double headed arrow. Another zone state is Alarm; this is activated by anything that will cause an intruder output to activate or a tamper condition on the zone; it is indicated by the presence of a red circle around any of the zone buttons. Also listed are the states of programmed output types. A black circle represents OFF, a green circle represents ON. To return to the Overview card click on the Exit button. This allows you to select another RIO if desired.



If the RIO being viewed is an RF RIO then the RIO view card indicates the RF specific status of the RIO.



Using the mimic function in Allow panel modifications mode

In the Allow panel modifications mode the user may, in addition to those options available in View only mode, omit zones and test outputs by clicking on the button corresponding to each individual output or zone. This causes the button to flash: output buttons flash green and grey when they have been provisionally programmed as active. Outputs which are active before being clicked on (i.e. are being provisionally programmed as inactive) will flash black and grey; to confirm the programming click on the Action button, to abort the programming click on Cancel. A zone can be omitted by clicking on its button and then pressing the Action button. If a zone button is pressed and the zone has not been programmed as omissible, the yellow cross which indicates zone omission will flash on the button for approximately 2 minutes and then Galaxy Gold will abort its attempts at omitting the zone. For more details on testing outputs and omitting zones see the Galaxy Engineer's manual.

Note: Unlike menu option 32 (OUTPUTS) the outputs are not tested by output type but by output address. Outputs programmed as output type Reset (menu option 51.3.7) **cannot** be activated from the mimic option.

It is possible in the Allow panel modifications mode to set, unset, and part set the system. This is achieved by clicking and dragging the group set status indicators on the Overview display. Clicking, or, clicking and dragging with the left mouse button allows individual groups to be selected. Using the right mouse button selects all groups. Clicking on an active alarm indicator and then clicking on the Action button will cancel any alarms for that group and unset it. The indicator will cease to be red: if it was a tamper condition the indicator will turn purple until it has been reset; if it was a PA alarm then it will turn blue until it is reset; otherwise it will return to the very dark red colour. The Mimic function does not require a code to unset the system.

Galaxy RS232 module

It is to be strongly recommended that when using the Galaxy RS232 module in the Copy/Overwrite mode with Galaxy Gold that RS232 software version V1.2X or above is used; this must be used if the control panel has version V1.2X or above software.

When using the RS232 module in the Copy mode (copying from stand alone RS232 module to Galaxy Gold) the flashing of the communications LED (LED1) should have an on period of 0.5 s and an off period of 0.5 s before copying begins.

Overwriting from Galaxy Gold to a stand-alone Galaxy RS232 module

When over-writing a site's programming details from Galaxy Gold to a stand-alone Galaxy RS232 module, (so that the Galaxy RS232 module can be then taken to a site and copied to it), then the destination, or *target*, control panel type must be selected during the programming of the site in Galaxy Gold. For details on how to set the target control panel type see Section 1, Panel Type. If the target control panel type is not set during programming of the site then an error message will appear; click on the 'OK' button and then program the target control panel details before selecting the Overwrite Site function again.

If down-loading to a Galaxy 8, 18, 60, 128, 500, 504 or 512 control panel then in addition to setting the target control panel type, the target control panel software version must also be set. This is done in the Target Panel Version window displayed to the user when Overwrite Site is selected from the Program menu on the Galaxy Gold keypad. Click on the software version of the target control panel to select it, press the OK button. The Target Panel Version window is only displayed if the target control panel type has been programmed in to the site file, for details on how to do this see the above paragraph.

Note : Panel programming can only be downloaded to the RS232 module if the software version is V2.xx or earlier.

If downloading to a Galaxy 16 or 16 *plus* the panel type must be set before overwriting and also before copying of data from the Galaxy RS232 module to Galaxy Gold from a stand-alone Galaxy RS232 module.

Section 5: GALAXY GOLD TRANSLATOR

The Galaxy Gold Translator allows all the text that appears on the Galaxy Gold screen and menus to be customised to individual user requirements.

INSTALLATION

The Translator is loaded from the Galaxy Gold CD. To load the Text Translator programme following the steps listed below:-

- Load the CD into your PC
- From the Start menu, select Run
- Browse for the TextTranslator directory on the CD
- Select the setup.exe file
- Select OK. The text translator installation will proceed automatically

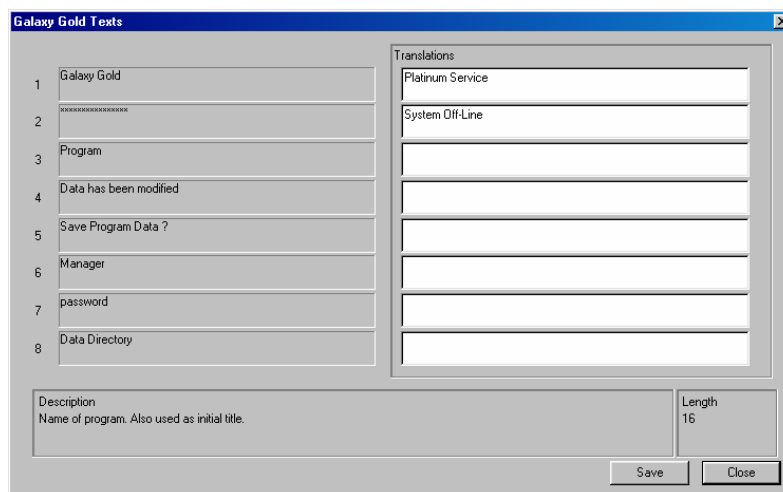
The Text Translator application and all associated files will be loaded into the Ademtech\GalGold directory.

Setting Up the Translator Shortcut Icon

1. Place the mouse pointer on the desktop in your Windows environment. Press the right mouse button. Point to **N**ew option. The **N**ew option should be highlighted and another list of options will appear. Select **S**hortcut and press the left mouse button.
2. In the Create shortcut dialogue box click on browse. Double click the AdemTech folder and then the GalGold folder, double click the Text Translator icon.
3. The create **S**hortcut dialogue box will appear again. Click on the Next> button. Either; press return to accept TextTransGG as the Galaxy Gold Text Translator icon label, or, press the Delete button on your computer keypad and the type the Galaxy Gold Text Translator icon label text of your choice. Press the Enter button on your computer keypad.
4. Double clicking in the Galaxy Gold Text Translator icon will launch your Text Translator software.

USING THE TRANSLATOR

1. Select the Start menu button
2. Select Programs.
3. Select the Galaxy Gold program group.
4. Select Galaxy Gold Text Translator.
5. The **Translator Select Text File** screen is displayed.
6. The **Galaxy Gold** button is highlighted. Click on the **OK** button or press **ENTER**. The **Galaxy Gold Texts** window is displayed.
The cursor is positioned in the translation window for text **1 — Galaxy Gold**. The **Descriptor** field in the bottom of the window gives details of each text and where it is displayed. The **Length** field shows the number of characters that can be entered in the translation window for each text.
7. Use the **↓** and **↑** keys or the mouse to move to the required texts for translation and enter the new text. Press **ENTER** or the **↓** key to move to the next text. The **PgUp** and **PgDn** keys can be used to quickly scroll through each display screen of texts.
8. Click on **Save** button to save the translations.
9. Click on the **Close** button to exit from the translation program.



On running the Galaxy Gold program all of the translated texts are displayed in place of the default texts. Any text, which has not been translated is displayed as the default text.

Appendix A: Galaxy Gold Messages

The details below outline the basic explanations of the main Galaxy messages

| Message | Description |
|---|---|
| Access disabled at Galaxy panel | Unable to communicate with Galaxy panel after successfully connecting to telecom module or RS232 module. Check status of Galaxy panel. |
| Busy, please wait... | Selected comm port is not ready for communication. Wait for port to reset. |
| Call from site answered. Checking password. | Confirming that the password on the Galaxy Gold site file and the Galaxy panel that initiated the call match. |
| Cannot disconnect cleanly from Site | Galaxy Gold is unable to hang up from the Galaxy site after transmitting the Call Back Digit. |
| Cannot connect to COM X | Message is displayed during setup if the comm port select is being used by another application or is not present on the PC. Remove application from comm port OR select another comm port in the Setup option. |
| Cannot communicate with Galaxy. Terminating connection | Successful connection to the Galaxy panel is broken. Check telecom module/RS232 module and cable connections. |
| Cannot communicate with PC Modem. Terminating connection. | No reply from PC modem on transmission of reset string. Check modem reset string values in the Setup option AND that the modem is present on the comm port selected. |
| Cannot Communicate with Remote Module | Failure to recognise device dialed. Check remote number is correct. Telecom Module: Check that telecom module is connected to the remote number telephone line. Check that Pulse or Tone is selected in Galaxy Gold Setup.RS232 Module: Check the baud rate matches the baud rate in the Galaxy Gold Setup Check that the correct cable (null modem) is connected. |
| Checking Password... | Confirm the password on the Galaxy Gold site file and the Galaxy panel match. |
| Copying Log | Event log of Galaxy panel is being copied to the Galaxy Gold site file. |
| Dialing Site... | Galaxy Gold is dialing the telecom module/RS232 module. |
| Disconnecting Modem Port | Galaxy Gold is being exited while connected to a Galaxy panel. |
| Disconnecting from Site | Galaxy Gold is hanging up from the Galaxy panel after transmitting the Call Back Digit. |
| Error: Cannot detect copy protection device [Dongle] Please ensure device is connected to printer port. | The correct copy protection device is not connected to the parallel printer port (LPT1). Check that the copy protection device that was packaged with the Galaxy Gold is connected to LPT1. |
| Error in PC Modem command | Modem returns an error code to Galaxy Gold following the modem reset. Check modem reset string values in the Setup option. Try adding the command W0 and/or F4 at the end of the string. |
| Error[s1] Timed out waiting for data transfer | This error occurs during copying site or overwriting site if no data transfer occurs for a 20 second period. |
| Error[s2] Cannot access communication port. | Selected comm port is being used by another device or is not present on the PC. Remove device from comm port OR select another comm port in the Setup option. |
| Illegal Username/Password | Invalid user name and/or password entered in the Active User window. Re-enter a valid user name and password. |
| Incoming call, dialing aborted. | Call being received by the PC modem. Call to the Galaxy panel is aborted. |
| Incorrect reply from PC modem. | Invalid code returned from PC modem following transmission of modem reset string. Check modem reset string values in the Setup option. |

| Message | Description |
|---------------------------------------|---|
| Lost contact. Aborting call. | Failure to transmit Call Back Digit to Galaxy panel. Check status of Galaxy panel and retry Call Back Dial option. |
| Manager PIN not identical | Manager PIN entered does not match the manager PIN of the Galaxy site. This message is only displayed when overwriting USER CODES on the Galaxy panel. |
| Download terminated before completion | The connection to the panel was lost prior to the completion of the download. A connection to the panel should be re-established and the download attempted again. |
| Modem connected at wrong baud rate | PC modem is communicating at the wrong baud rate. Check the Baud Rate setting in the Setup option. |
| No reply from PC modem. | Failure to reset the PC modem. Check modem reset string values in the Setup option. |
| No callback. Aborting | Waiting for call back timeout has occurred. The timeout period is five minutes. Check that the correct Call Back Digit was select for transmission. |
| Number dialed is engaged | Galaxy panel is currently in communication |
| Password Invalid. Access denied | Password on the Galaxy Gold site file and the Galaxy panel do not match. Check correct password is entered in the Enter New Site Data window OR correct password is entered when prompted for. |
| PC Modem misunderstood Message | Modem returns error code to Galaxy Gold following the modem reset. Check modem reset string values in the Setup option. |
| PC Modem not connected to phone line | The PC modem is disconnected from the PSTN. Check the cable connections to the PC modem and the telephone socket. |
| Resetting PC Modem... | PC modem is being reset as dialing is initiated. |
| Site modem not connected | Remote number dialed is not answering within the DIAL-TIME allocated in the GLXY_GLD.INI file. Increase the DIAL-TIME value AND check that the remote number in the Enter New Site Data window is correct. |
| Successfully connected to site | Indicates that communication has been successfully established. |
| Transmitting Call Back Number | Galaxy panel is instructed to initiate a Call Back to a Galaxy Gold PC. |
| Waiting for panel to call. | Galaxy Gold is waiting for the Galaxy panel to initiate communication |
| Warning: Invalid data directory | Directory selected contains files from previous versions of Galaxy Gold (Version 4.20 and before). Select a new data directory. |

Appendix B : Galaxy Gold Modem Reset Strings

THE MODEMS LISTED BELOW HAVE BEEN TESTED AND FOUND TO WORK SATISFACTORILY WITH GALAXY GOLD

There is no Guarantee that every combination of Modem and PC will work

| Manufacturer | Type/Model | Comments | PC | Panel | Call Back | V21 |
|-------------------------|---|--|----|-------|-----------|-----|
| 3Com | 3CCM156UK (PCMCIA) Megahertz 56K Global Modem PC Card | B0X2V0L3E0S12=20S0=0S7=50 | ✓ | | | |
| Dataflex Design Limited | Internal Super Gem (Product Code IM93) | F4W0 B0X2V0L3E0S12=20S0=0S7=50 F4 forces the modem to 1200 Baud (CCITT V.22) W0 forces the modem to only report DTE speed | ✓ | | | |
| Digicom | K56 Flex | To the beginning of the default Modem Reset String add: X3+MS=2, 1, 1200, 2400 | ✓ | | | |
| Hayes | Accura 288 V.34 and Fax – External | B0X2V0L3E0S12=20S0=0S7=50 | ✓ | ✓ | ✓ | ✓ |
| Hayes | Accura 336 Message Modem – External | B0X2V0L3E0S12=20S0=0S7=50 | ✓ | ✓ | ✓ | ✓ |
| Hayes | Smart Modem Model 07.00038 – External | B0X2V0L3E0S12=20S0=0S7=50 | ✓ | | | |
| Hayes | Smart Modem Optima 288 V.FC and Fax – External | B0X2V0L3E0S12=20S0=0S7=50 | ✓ | | | |
| Hayes | Accura 56k Speakerphone Modem | B0X2V0L3E0S12=20S0=0S7=50S37=5 | ✓ | ✓ | ✓ | |
| Hayes | Accura V92 15328 Series 0269 | CURRENTLY AVAILABLE MODEM DOESN'T WORK | X | X | X | X |
| Lasat | Lasat Credit 336 – PCMCIA | B0E0L2&G0W0 | ✓ | | | |
| MR Modem | PCMCIA 56K | B0X3V0L3E0S12=20S0=0S7=50S37=5 | ✓ | | | |
| Multi-Tech System Inc | MT2834ZDX – External | B0X2V0L3E0S12=20S0=0S7=50 | ✓ | | | |
| Multi-Tech System Inc | 56K MT5600ZDXV – External | X3+MS=2, 1, 1200, 2400B0X2V0L3E0S12=20S0=0S7=50 | ✓ | | | |
| Pace | PACE Linnet 34 fx | +MS=1,0,1200,1200B0X2V0L3E0S12=20S0=0S7=50 | ✓ | | | |
| Pison | Gold Card PCMCIA (Advised by customer - not confirmed) | B0X2V0L3E0S12=20S0=0S7=50S37=011110 | ✓ | | | |
| Trio | Trio Fax/Data Modem Model FB1428VQE-T (V.34) | B0X3V0L3E0S12=20S0=0S7=50 | ✓ | | | |
| US Robotics | Sportsster Vi 14.4 Faxmodem with Voice Mail | B0X2V0L3E0S12=20S0=0S7=50 | ✓ | | | ✓ |
| US Robotics | 5630B Fax Modem 56K V92 | B0X2V0L3E0S12=20S0=0S7=50 | ✓ | ✓ | X | |
| US Robotics | 5668B message Modem 56K V92 | B0X2V0L3E0S12=20S0=0S7=50 | ✓ | ✓ | ✓ | |
| Zoom | 56K Dual Mode Modem – External (2956L or 3094L) | B0X2V0L3E0S12=20S0=0S7=50S37=5 | ✓ | ✓ | ✓ | |
| Zoom | 3090 Mini USB 56K | B0X2V0L3E0S12=20S0=0S7=50 | ✓ | ✓ | ✓ | X |
| Zoom | 56K 3049C | X2V0L3E0S12=20S0=0S7=50+MS=V22 *V6.8/3.8 are required | ✓ | ✓ | ✓ | X |

The Galaxy Gold and Alarm Monitoring default Modem Reset String is: **B0X2V0L3E0S12=20S0=0S7=50**

(Adding S37=5 helps with some modems)

* For modems with the Conexant Chipset, V6.8 Galaxy Gold and V3.8 Alarm Monitoring are required. Earlier versions of Galaxy Gold and Alarm Monitoring will not work with these modems.

Appendix C : Galaxy Gold Panel Compatibility

The table below shows the levels of compatibility between Galaxy Gold and the the various panel software versions:

| Galaxy Gold Version | Galaxy 8/18/60/128/500/504/512 Version | | | | | | | | | | | | | | Galaxy 16/16+ Version | | | |
|---------------------|--|-------------|-------------|------|------|-----------|------|------|------|------|------|-------------|-----------|-----|-----------------------|-----|--|--|
| | 1.04 | 1.15/1.16 | 1.17/1.18 | 1.2x | 1.3x | 2.0x/2.1x | 2.3x | 3.0x | 4.00 | 4.3x | 4.5x | < 1.95/1.96 | 1.95/1.96 | 2.x | 2.6x | 3.x | | |
| 2.03 | Yes | No | No | No | No | No | No | No | No | No | No | No | No | No | No | No | | |
| 3.21/3.11 | Yes | Not Totally | Not Totally | No | No | No | No | No | No | No | No | Not Totally | Yes | No | No | No | | |
| 3.42/3.32 | Yes | Not Totally | Not Totally | Yes | No | No | No | No | No | No | No | Not Totally | Yes | No | No | No | | |
| 4.1/4.2 /4.4 | Yes | Not Totally | Not Totally | Yes | Yes | No | No | No | No | No | No | Not Totally | Yes | Yes | No | Yes | | |
| 5.1/5.2 | Yes | Not Totally | Not Totally | Yes | Yes | Yes | No | No | No | No | No | Not Totally | Yes | Yes | No | Yes | | |
| 5.7/5.8 | Yes | Not Totally | Not Totally | Yes | Yes | Yes | No | Yes | No | No | No | Not Totally | Yes | Yes | Yes | Yes | | |
| 6.1/6.2 | Yes | Not Totally | Not Totally | Yes | Yes | Yes | Yes | Yes | Yes | Yes | No | Not Totally | Yes | Yes | Yes | Yes | | |
| 6.7/6.8 | Yes | Not Totally | Not Totally | Yes | Yes | Yes | Yes | Yes | Yes | Yes | Yes | Not Totally | Yes | Yes | Yes | Yes | | |

Galaxy Gold is compatible with the following communication module versions:

Telecom Module

E050 - PCB Rev. 0.5 Software versions 1.00 and above(the mimic function is only available on software V2.12 and above)
E062 - PCB Rev. 0.5 Software versions 4.00 and above

RS232 Module

E054 software versions 1.20 and above








ISDN Module

A211 software version 3.00 and above

Ethernet Module

E080 Software version 1.00 and above

Appendix D: Quick Programming Key Instructions

| CONTROL TYPE | SHORTCUT |
|---|--|
| <p>Spin Button</p>  | <p>+ = Spin Up - = Spin Down Numerical use. Handy for spin buttons, which have numerous options. 0-9 options – type number 0-9. >9 options – 0-9 will take you to num x 10 e.g. entering 2 will take you to 20. From here use + or - to navigate.</p> <p>Options can also be found using characters. E.g. for a fire zone when function spin button is highlighted click F this will take you to the next option beginning with F click again and it moves to the next function with F and so on.</p> |
| <p>Text Box</p>  | <p>Ctrl + Insert – to copy the text from a field no need to select text. Shift + Insert – to paste text copied.</p> <p>N.B. this works for all fields including spin button, tick boxes and group buttons.</p> |
| <p>Tick Boxes</p>  or  for on  or  for off | <p>Space bar – toggle on and off. Enter – toggle on and off.</p> |
| <p>Group Button</p>  Yellow on, Grey off | <p>Space bar – toggle all on and all off. Nos 1 to 8 – toggles on and off that number.</p> |
| <p>Copying complete row</p> | <p>Ctrl + Delete – Copies the options from the selected row. Shift + Delete – Pastes the last copied row into the currently selected row.</p> <p>Warning this only copies the viewed group map options. Additionally it also copies the group map options to the group map in view. e.g. Row copied from show group map A. Row copied to showing group map B the copied group map is pasted to B</p> |
| <p>To scroll page one at a time</p> | <p>Page Up – goes up Page Down – goes down</p> |
| <p>To jump to Start/End</p> | <p>Ctrl + Page Up - to start page Ctrl + Page Down - to end page</p> |
| <p>Copying single option</p> | <p>Ctrl + Insert – Copies the selected option. Shift + Insert – Pastes the last copied option to the selected option.</p> |

Appendix E: PC Network Set-up Requirements

Requirements

- Ethernet Module
- Cat 5 Network Cable
- 10/100Mbps Ethernet Adapter

The TCP/IP protocol will have to be installed in the network settings.

- Static IP Address specified.
- Subnet mask specified.
- Default Gateway Specified.

Appendix F: Data Ranges

User Code Ranges

| Panel Type | Software Version | | | |
|------------|------------------|-------|-------|-------|
| | 1.xx | 2.xx | 3.xx | 4.xx |
| G 8 | 1-10 | 1-10 | 1-10 | 1-50 |
| G 18 | 1-20 | 1-10 | 1-10 | 1-100 |
| G 60 | 1-30 | 1-10 | 1-10 | 1-200 |
| G 128 | N/A | 1-50 | 1-50 | 1-250 |
| G 500 | 1-100 | 1-100 | 1-100 | 1-500 |
| G 504 | N/A | 1-200 | 1-500 | 1-999 |
| G 512 | 1-200 | 1-200 | 1-500 | 1-999 |

Max Code Ranges

| Panel | Software Version | | | |
|-------|------------------|---------|---------|------|
| | 1.xx | 2.xx | 3.xx | 4.xx |
| G 8 | 11-20 | 11-20 | 11-20 | N/A |
| G 18 | 21-40 | 21-40 | 21-40 | N/A |
| G 60 | 31-73 | 31-73 | 31-73 | N/A |
| G 128 | N/A | 51-100 | 51-100 | N/A |
| G 500 | 101-150 | 101-150 | 101-150 | N/A |
| G 504 | N/A | 200-275 | 500-575 | N/A |
| G 512 | 200-275 | 200-275 | 500-575 | N/A |

Note: It is best to copy/overwrite the whole range of maxes as they are done in groups of 4.

Zone Ranges

| Panel Type | Software Version | | | |
|------------|------------------|-----------|-----------|-----------|
| | 1.xx | 2.xx | 3.xx | 4.xx |
| G 8 | 1011-1018 | 1011-1018 | 1011-1018 | 1011-1018 |
| G 18 | 1001-1028 | 1001-1028 | 1001-1028 | 1001-1028 |
| G 60 | 1001-1078 | 1001-1078 | 1001-1078 | 1001-1078 |
| G 128 | N/A | 1011-2078 | 1011-2078 | 1011-2078 |
| G 500 | 1011-4158 | 1011-4158 | 1011-4158 | 1011-4158 |
| G 504 | N/A | 1011-4158 | 1011-4158 | 1011-4158 |
| G 512 | 1001-4158 | 1001-4158 | 1001-4158 | 1001-4158 |

RIO Output Ranges

| Panel Type | Software Version | | | |
|------------|------------------|-----------|-----------|-----------|
| | 1.xx | 2.xx | 3.xx | 4.xx |
| G 8 | 1001-1014 | 1001-1014 | 1001-1014 | 1001-1014 |
| G 18 | 1001-1024 | 1001-1024 | 1001-1024 | 1001-1024 |
| G 60 | 1001-1074 | 1001-1074 | 1001-1074 | 1001-1074 |
| G 128 | N/A | 1001-2074 | 1001-2074 | 1001-2074 |
| G 500 | 1001-4154 | 1001-4154 | 1001-4154 | 1001-4154 |
| G 504 | N/A | 1001-4154 | 1001-4154 | 1001-4154 |
| G 512 | 1001-4154 | 1001-4154 | 1001-4154 | 1001-4154 |

Link Ranges

| Panel Type | Software Version | | | |
|------------|------------------|------|------|-------|
| | 1.xx | 2.xx | 3.xx | 4.xx |
| G 8 | N/A | N/A | N/A | N/A |
| G 18 | 1-16 | 1-16 | 1-16 | 1-32 |
| G 60 | 1-32 | 1-32 | 1-32 | 1-64 |
| G 128 | N/A | 1-64 | 1-64 | 1-128 |
| G 500 | 1-99 | 1-99 | 1-99 | 1-256 |
| G 504 | N/A | 1-99 | 1-99 | 1-256 |
| G 512 | 1-99 | 1-99 | 1-99 | 1-256 |

Honeywell Security
2 Redwood Crescent
Peel Park Campus
East Kilbride
Scotland
G74 5PA

IU1-0057 Issue 4

© Copyright Honeywell