

## Information

1. **PriorityStart!** does not put life back into a battery- it is not a battery booster. The **PriorityStart!** is an electromechanical gear driven system. If possible, install the **PriorityStart!** on a new fully charged battery.
2. TO TEST, attach per owner's manual. Turn headlights on and let lights take voltage down to disconnect threshold, make sure key is out of ignition (**DO NOT use any accessories i.e. power supply, test bench equipment, engine fans, light bars, etc. to obtain "quick" discharge of battery**).  
Use a voltage meter to monitor voltage. When voltage is below 11.7 volts for one full minute **PriorityStart!** will disconnect. After disconnecting, wait one full minute to reconnect. To reconnect, (a) operate headlights (b) step on brake pedal or (c) **BY SWITCHING ANY other electrical device in the vehicle.** Any load transient of 0.2mv (millivolts) is all that is required to reconnect.
3. Do NOT jump-start through the **PriorityStart!** Improper jump-starting can damage the electrical system, onboard computer and damage the **PriorityStart!**

## Troubleshooting

**Problem:** **PriorityStart!** switches off battery power too often.

- An accessory is unintentionally left on; or,
- Ground connection requires attention. Make sure that ground terminal is firmly secured to a clean surface; or,
- Post adapter needs tightening; or,
- Corrosion buildup on battery terminals or cables. Clean per battery instructions; or,
- Battery is weak, needing replacement; bad battery cable; or,
- There is a short circuit in the vehicle electrical system.

**Problem:** Battery is dead.

- Ground connection may require attention; or,
- Battery may need replacement.

**Problem:** Vehicle cable not long enough to install unit.

- Purchase after-market cable. Available at most auto parts stores.

## Maintenance

- Keep connections tightly fastened and clean from corrosion.
- Battery cables may be sprayed with corrosion inhibiting products.
- Care for the unit the same as your vehicle battery.
- **PriorityStart!** can be disconnected by unplugging the ground wire. The battery is still connected.
- A vehicle should be started at least every 60-90 days and engine run for 15 minutes to offset normal battery discharge.

## Technical Specifications

- Operates on 12-volt Neg.(-) or Pos.(+) ground system, when installed per instructions.
- Temperature range: -40°F to +185°F.
- U/L Tested, ISO, SAE, USCG Certified. The Product herewith complies with the Requirements of 7323/EEC and 89/336/EEC, and carries the CE mark accordingly.

## Warranty

Your **PriorityStart!**® is covered by a conditional, limited warranty to the original purchaser. Your **PriorityStart!** is warranted to be free from defects in materials and workmanship under normal use and conditions for a period of 12 months from the date of original purchase (proof of purchase required). If your **PriorityStart!** unit malfunctions or fails within the aforementioned warranty period because of a defect in materials and workmanship, we will repair or replace it at our discretion. The **PriorityStart!** owner is responsible for costs to upgrade any part replacements. A warranty return must be sent freight and insurance prepaid with a copy of this Warranty Certificate and a proof of purchase to BLI International Division of Baton Labs, Inc. at its address listed below. Labor for removal and installation of the product is at owners expense.

This Warranty is valid only for a **PriorityStart!** purchased in the U.S. This warranty does not extend to any defect, malfunction, or failure caused by misuse, abuse, improper installation (including disassembly of **PriorityStart!**), use of the product with equipment for which it was not intended, or unauthorized alterations or repairs.

This Warranty is the sole and exclusive express warranty given with respect to **PriorityStart!** and all other express warranties are hereby excluded. No one is authorized to assume any liability on behalf of BATON LABS, INC. or impose any obligation on it in connection with the sale of this product other than outlined above.

NEITHER BATON LABS, INC. NOR THE DEALER WHO SELLS **PriorityStart!** IS RESPONSIBLE FOR INDIRECT, INCIDENTAL, SPECIAL, PUNITIVE OR CONSEQUENTIAL DAMAGES ARISING OUT OF THE USE OF OR INABILITY TO USE THIS PRODUCT. EXCEPT FOR THIS LIMITED WARRANTY, THE MANUFACTURER HAS NOT MADE, AND SPECIFICALLY DISCLAIMS, ANY WARRANTY OR REPRESENTATION OF ANY KIND, EXPRESS OR IMPLIED, DIRECT OR INDIRECT, OF PRODUCT FITNESS FOR A PARTICULAR PURPOSE.

Any claims to this warranty must be brought within 1 year. If any portion of this warranty or limitation of rights and remedies is found to be unenforceable, then the remainder of this document shall remain in full force and effect. California law shall govern all claims.

Some states do not allow the exclusion or limitation of incidental or consequential damages, or allow limitations on how long an implied warranty lasts, so the above limitations may not apply to you. This warranty gives you specific legal rights and you may also have rights that vary from state to state.



**BLI International**  
**Division of Baton Labs, Inc.**  
**12402 N. Division St #200**  
**Spokane, WA 99218**  
**Phone (509) 467-0332**  
**Fax (509) 279-2534**  
**Web www.prioritystart.com**  
**email sales@prioritystart.com**

## PriorityStart!®

### Automatic Battery Power Protection

# 12-VOLT OWNERS MANUAL

**PriorityStart!** attaches easily to any type of standard 12-volt vehicle battery. No vehicle modifications are necessary. **PriorityStart!** will not switch-off battery power when the engine is running.

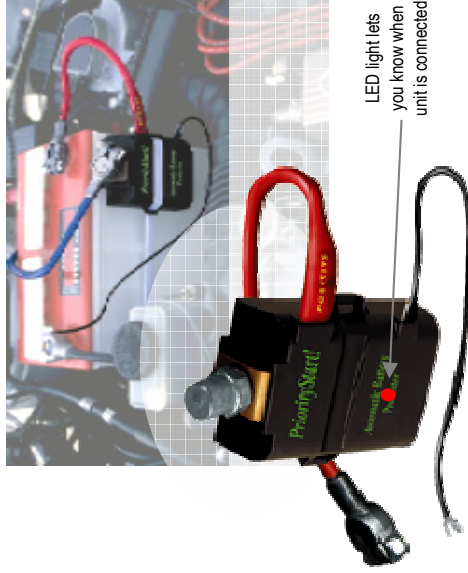
## How PriorityStart! Works

The **PriorityStart!** stops dead batteries AUTOMATICALLY before damage occurs. Constantly monitors voltage; senses any voltage drain and AUTOMATICALLY disconnects the drain, leaving starting power. AUTOMATICALLY reconnects your battery when (a) operate headlight switch or brake pedal (b) try switching any other electrical device in the vehicle. Any load transient of 0.2mv (millivolts) is all that is required to reconnect.

Computer chip technology; universal design fits top post or side post batteries. Fits any 12-volt application. No similar product on the market.

The Power-LED (On/Off indicator) will turn GREEN when the **PriorityStart!** is connected.

## No Hard Wiring Required

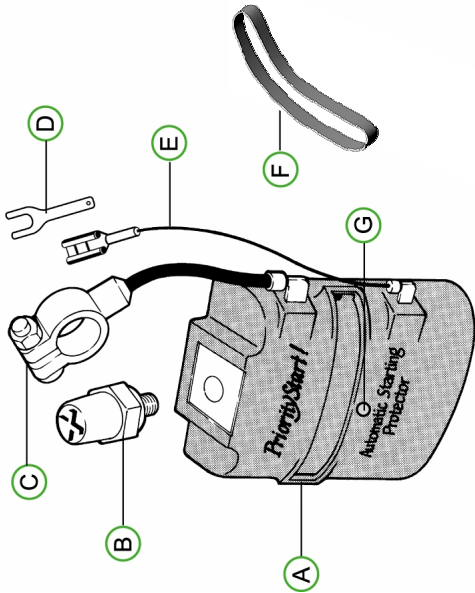


LED light lets you know when unit is connected

**PriorityStart!** Battery Protection System is protected by one or more of the following  
\*United States patents and patented abroad.  
\*U.S. Patent Nos. 5,200,877; 5,296,788; 5,296,997; 5,949,157 and patented abroad.

**PriorityStart!** is a registered trademark of Baton Labs, Inc.

## PriorityStart!® Parts List



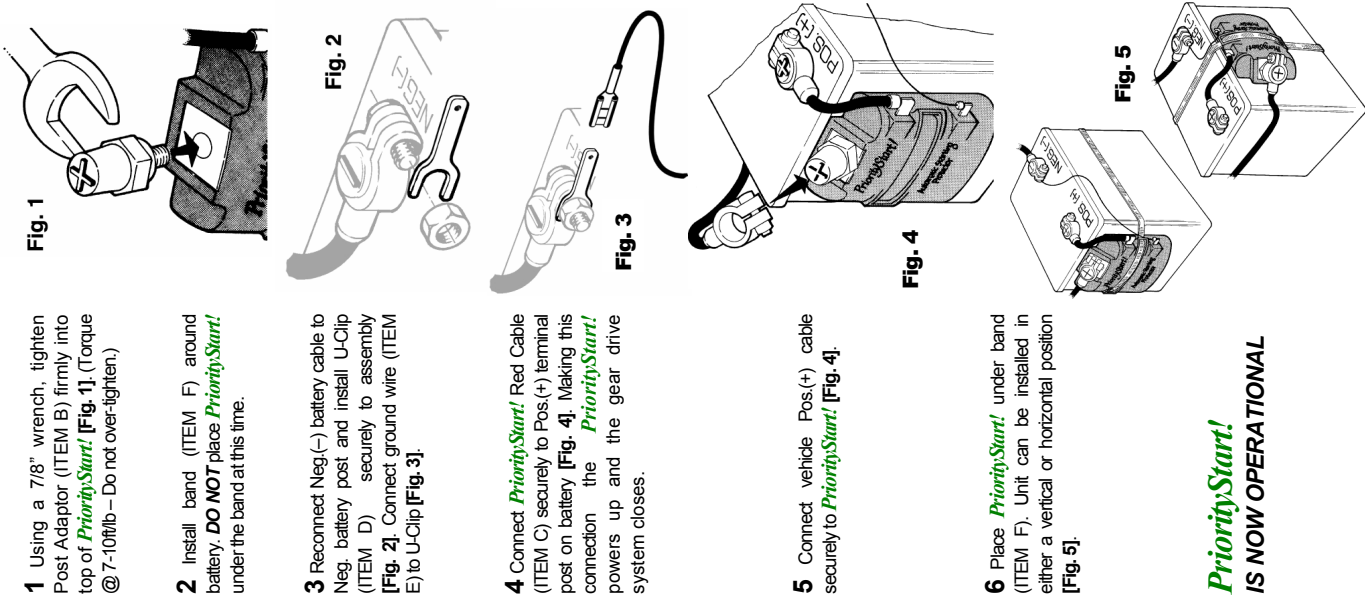
- A. **PriorityStart! Unit**
- B. **Post Adaptor**
- C. **PriorityStart! Pos.(+) Red Cable**
- D. **U-Clip**
- E. **PriorityStart! Ground Wire**
- F. **Attachment Band**
- G. **LED Power Indicator**

## Installation Instructions

**PLEASE READ ENTIRE INSTRUCTIONS BEFORE** installation and follow sequence exactly, if your battery has previously discharged its power (deep discharge), you probably need to replace battery before installation of **PriorityStart!**

- Engine off, accessories off and key out of ignition – key left in 'on' position may cause unit to be inoperative. High amp devices (i.e. lightbars, rotating lights) should not be operated when engine is off.
  - Disconnect existing cables from battery: **FIRST** Neg.(-) then Pos.(+). **WARNING:** Batteries produce explosive gases. Cover with cloth before removing cables. **ALSO:** Clean battery terminals. Do not install on a corroded cable or battery post.
  - Locate unit so that vehicle Pos.(+) cable can reach Post Adaptor (ITEM B) see [Fig. 5].
- IMPORTANT:** DO NOT allow **PriorityStart!** Red cable (ITEM C) to contact battery post or cable until instructed.
- Make sure **PriorityStart!** post adaptor (ITEM B), once installed, will not contact closed hood.

## Top-Post Battery Installation



**1** Using a 7/8" wrench, tighten Post Adaptor (ITEM B) firmly into top of **PriorityStart!** [Fig. 1]. (Torque @ 7-10ft/lb – Do not over-tighten.)

**2** Install band (ITEM F) around battery. **DO NOT** place **PriorityStart!** under the band at this time.

**3** Reconnect Neg.(-) battery cable to Neg. battery post and install U-Clip (ITEM D) securely to assembly [Fig. 2]. Connect ground wire (ITEM E) to U-Clip [Fig. 3].

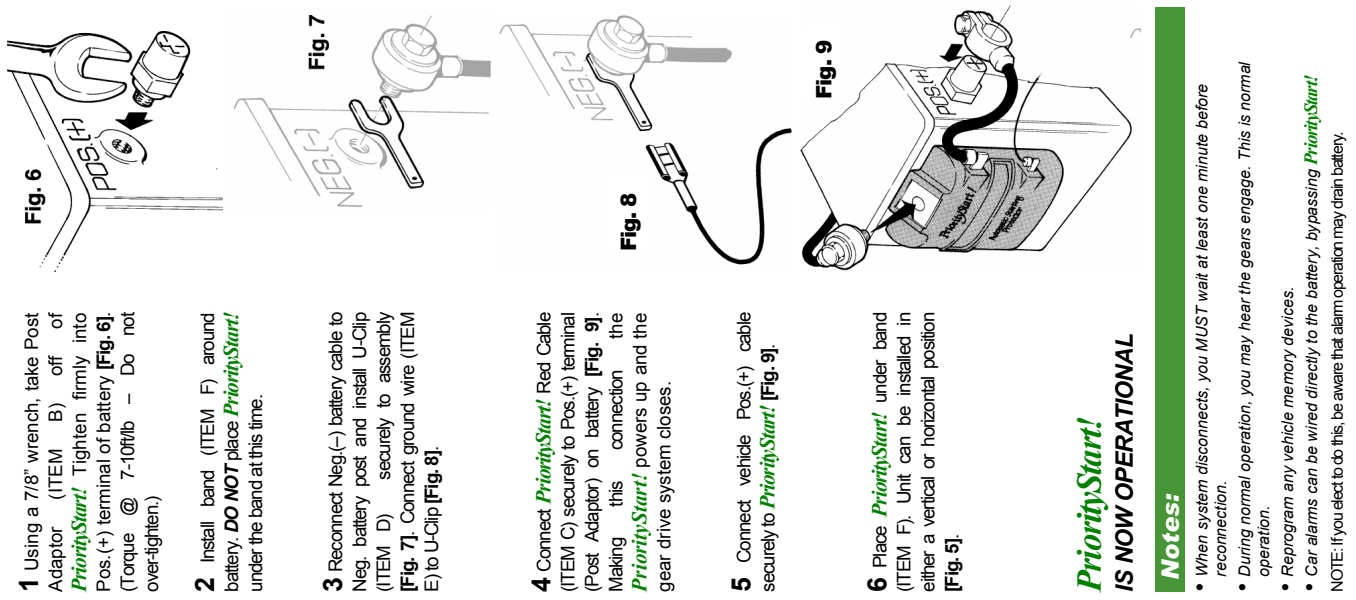
**4** Connect **PriorityStart!** Red Cable (ITEM C) securely to Pos.(+) terminal post on battery [Fig. 4]. Making this connection the **PriorityStart!** powers up and the gear drive system closes.

**5** Connect vehicle Pos.(+) cable securely to **PriorityStart!** [Fig. 4].

**6** Place **PriorityStart!** under band (ITEM F). Unit can be installed in either a vertical or horizontal position [Fig. 5].

**PriorityStart!**  
**IS NOW OPERATIONAL**

## Side-Post Battery Installation



**1** Using a 7/8" wrench, take Post Adaptor (ITEM B) off of **PriorityStart!** Tighten firmly into Pos.(+) terminal of battery [Fig. 6]. (Torque @ 7-10ft/lb – Do not over-tighten.)

**2** Install band (ITEM F) around battery. **DO NOT** place **PriorityStart!** under the band at this time.

**3** Reconnect Neg.(-) battery cable to Neg. battery post and install U-Clip (ITEM D) securely to assembly [Fig. 7]. Connect ground wire (ITEM E) to U-Clip [Fig. 8].

**4** Connect **PriorityStart!** Red Cable (ITEM C) securely to Pos.(+) terminal (Post Adaptor) on battery [Fig. 9]. Making this connection the **PriorityStart!** powers up and the gear drive system closes.

**5** Connect vehicle Pos.(+) cable securely to **PriorityStart!** [Fig. 9].

**6** Place **PriorityStart!** under band (ITEM F). Unit can be installed in either a vertical or horizontal position [Fig. 5].

**PriorityStart!**  
**IS NOW OPERATIONAL**

### Notes:

- When system disconnects, you **MUST** wait at least one minute before reconnection.
  - During normal operation, you may hear the gears engage. This is normal operation.
  - Reprogram any vehicle memory devices.
  - Car alarms can be wired directly to the battery, by passing **PriorityStart!**
- NOTE: If you elect to do this, be aware that alarm operation may drain battery.