

**THERMO
ESSENCE**



technologies

thermovape
t₁

User Guide

Warnings



Do not dispose of rechargeable batteries in a fire!
Batteries pose a serious risk of explosion if disposed of in fire.



Do not dispose of rechargeable batteries in a trash. Please follow your local guidelines for recycling or disposing of used batteries.



Choking Hazard! Small Parts.
Keep out of the reach of children.

Warnings

Be advised that the vaporization of plant materials (herbals, botanicals, etc.) may be hazardous to your health. The Thermo Essence Technologies products have not been evaluated by the USFDA. They are not intended to be drug products that diagnose, treat, cure or mitigate any disease or condition.

This product must not be used by:

Do not use these products if you are under the age of 18 years of age, or 21 in those jurisdictions in which 21 is the age of majority; if you are a non-smoker, if you have a demonstrated allergy or sensitivity to smoke or any combination of inhalants; or if you are pregnant or nursing.

If you have any type of heart, pulmonary, lung, and/or respiratory medical condition(s), or other medical condition(s) you should consult your physician prior to using this product.

Please read and check the ingredients on the nicotine liquid bottle. If you feel that you may be allergic to any of the ingredients listed please consult your physician prior to using this product.

General:

Please read and follow all instructions prior to using this product.

Table of Contents

Introduction to the ThermoVape	6
ThermoVape Terminology	7
ThermoVape Overview	8
ThermoVape Kit	9
Quick Tips for Better Vapor	10
Quick Start Guides	12 - 17
ThermoVape Cleaning and Maintenance	18 - 22
ThermoVape Quick Cleaning Tips	19
Disassembling the ThermoVape	20
Cleaning the ThermoVape	21
Cleaning the ThermoVape Heater Core	22

Table of Contents

Battery Information	23 - 25
Recharging the ThermoVape Batteries	24
Battery Charger Information	25
Trouble Shooting	26 - 29
ThermoVape Warranty	30 - 31
Disclaimer	32
Optional Accessories	33
Contact Information	Back of Guide

Introduction to the ThermoVape

Thank you for your purchase and congratulations on being a new owner of a ThermoVape!

The ThermoVape is an American made Personal Herbal Vaporizer. The ThermoVape Personal Herbal Vaporizer provides the owner with many advantages in technology, quality, safety, innovation, and design over other currently available vaporizers.

The ThermoVape Personal Herbal Vaporizer is a device made by individuals who simply believe that Herbal Vaporizers are revolutionary products and truly provide people an unequalled alternative to smoking herbal materials.

The ThermoVape Personal Herbal Vaporizer is manufactured by Thermo-Essence Technologies. Thermo-Essence Technologies brings expertise in mechanical engineering, medical device design, and development to the Personal Herbal Vaporizer market. Thermo-Essence Technologies designs and manufactures state of the art, precision engineered, custom built vaporizers, that are 100%, **designed, manufactured, and assembled in the USA**. This guide is designed to provide you with all the information you will need to get the most out of your new ThermoVape.

Enjoy!

For additional information visit: www.thermovape.com

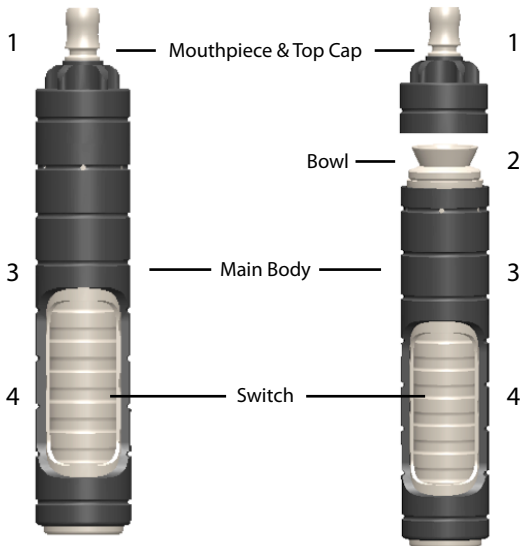
ThermoVape Technology

- **Herb or Herbal:** "any plant with leaves, seeds, or flowers used for flavoring, food, medicine, or perfume" or "a part of such a plant as used in cooking". (Botanists use the same term differently, for any non-woody flowering plant, regardless of its flavor, scent or other properties, and thus include only grass-like plants and herbs.)
- **Herbal Vaporizer or Personal Herbal Vaporizer:** A device designed to extract the essence or active compounds from a herb through the use of heat, rather than through burning or combustion.
- **LiFePO Battery:** A new type of lithium battery that is safer and has a longer lifespan (can be discharged and recharged for more cycles) than traditional Li-ion rechargeable batteries. The ThermoVape uses a rechargeable LiFePO battery in size CR123a.
- **Tenergy:** The company that manufactures the 14250 LiFePO 3.0Volt and the RCR123a LiFePO 3.2Volt batteries that are used in the 6Volt ThermoVape models.
- **Vaping:** A term to describe using a personal vaporizer.
- **Vapor:** A term used to describe the inhaled atomization product generated by a personal vaporizer.

ThermoVape Overview

The ThermoVape comes fully assembled. The ThermoVape has 4 main components:

1. The top and mouthpiece.
2. The bowl, there is where the herbal/plant material is placed.
3. The Main Body
4. The Switch/Battery Sleeve



ThermoVape Kit



ThermoVape t1



Tenergy Charging Kit with wall and car adapter. The ThermoVape kit comes with the charger kit and 2 sets of batteries (6 batteries total).



Tenergy LiFePO 750mAh 3.0Volt Rechargeable Battery. This state of the art battery can be recharged 1000 times.

Quick Tips for Better Vapor

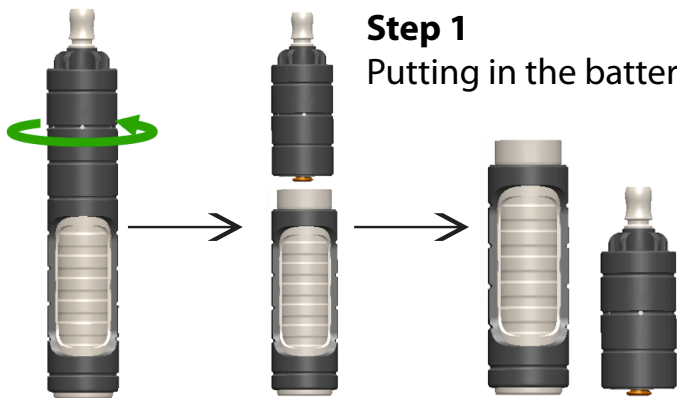
1. **Turn the ThermoVape on** by sliding the switch for 5 seconds (for dry herbs) to 10 second (for moist herbs) before inhaling. This will allow the heating core to warm up.
2. **Coarsely ground herbs will vape better:** Grinding or cutting up your herbs will improve the quality of the vapor. Grind or cut your herbs until they are the size of a BB (smaller than a pea) there is no need to finely grind your herb.
3. **Take a long slow inhale/drag.** Inhale slowly for 10-15 seconds. This may be slightly different than how you normally inhale/drag from a pipe or other device. Start very slowly at first, this phase of the inhale is warming the herb, then you will begin to taste the herb and feel the vapor as you inhale, during this part of the inhale you can inhale a little faster.
4. **Keep your battery charged.** The performance of the ThermoVape is directly related to the performance of the battery. All batteries lose some of their performance as they discharge, and all batteries will wear out over time. Keep your batteries charged up, and replace them when they start to perform poorly. You should be able to get 10 good inhales from fully charged batteries, this will vary depending on your vaping style. Spare batteries are inexpensive and if you use your ThermoVape a lot, or share with a lot of friends then you will want to have extra batteries to keep the vapor going.

Quick Start Guide thermovape t_1

Quick Start Guide

Step 1

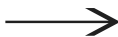
Putting in the batteries



DO NOT OVER
TIGHTEN!



Or



Quick Start Guide

OK

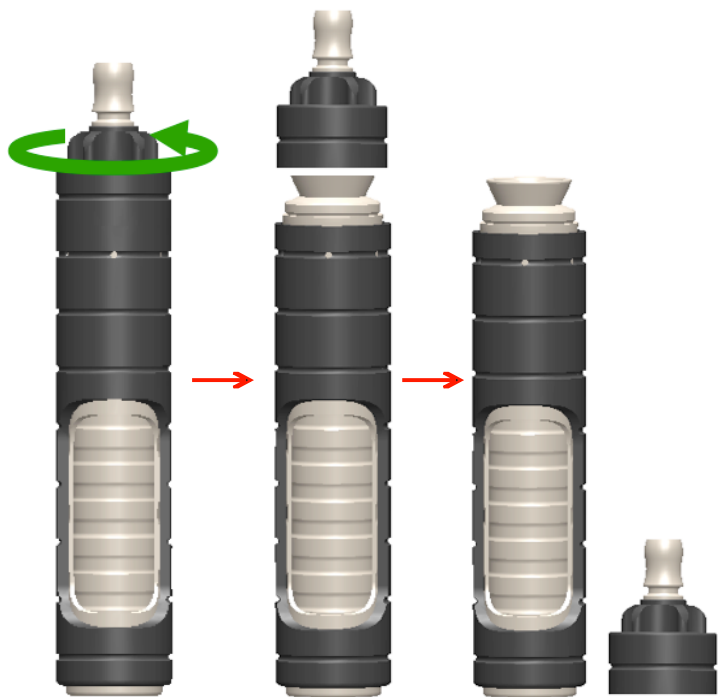


NOT OK

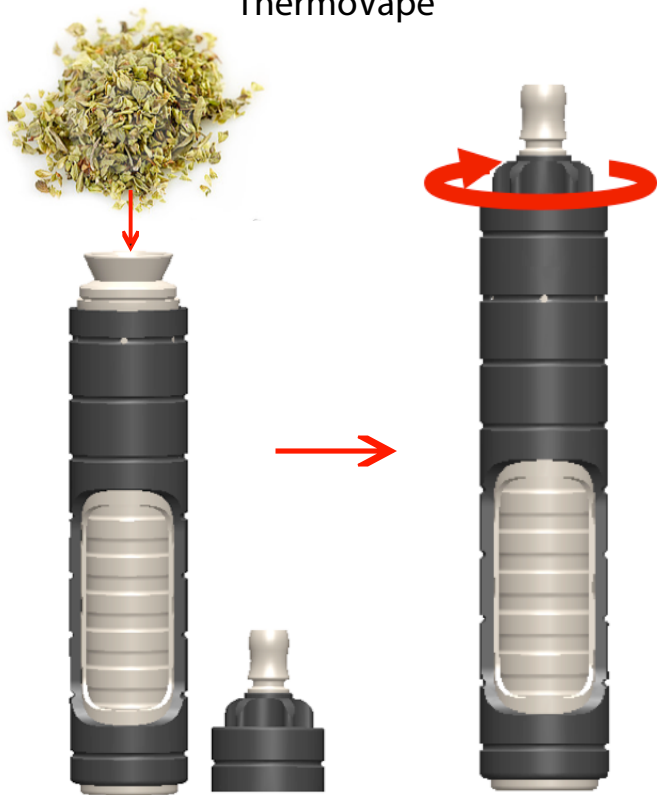


Quick Start Guide

Step 2 Loading Your ThermoVape



Step 2 Loading HERB into your ThermoVape



Quick Start Guide

Step 3

Turning ON the ThermoVape

The ThermoVape switch will automatically return to the OFF position when released

Slide along the ThermoVape switch with thumb or finger as shown by the **Green Arrow** (Do not squeeze)



Quick Start Guide

Step 3



Turning ON the ThermoVape

You must hold the switch in the ON position while inhaling.

When you slide the switch all the way up until it stops. That is the ON position.

If you feel that the vapor is getting too hot you can momentarily release the switch.

Cleaning and Disassembling the ThermoVape

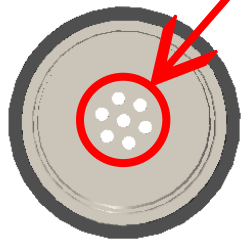
ThermoVape Cleaning and Maintenance

Quick Clean Tips

Gently Remove any herbal debris from the holes in the top cap.

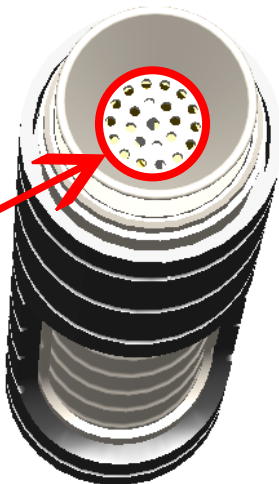


Top Cap Top view



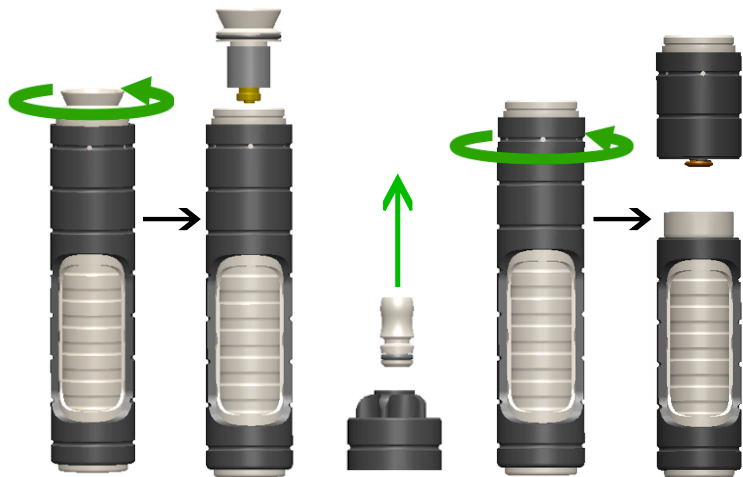
Top Cap Bottom view

Gently Remove any herbal debris from the holes in the bowl.



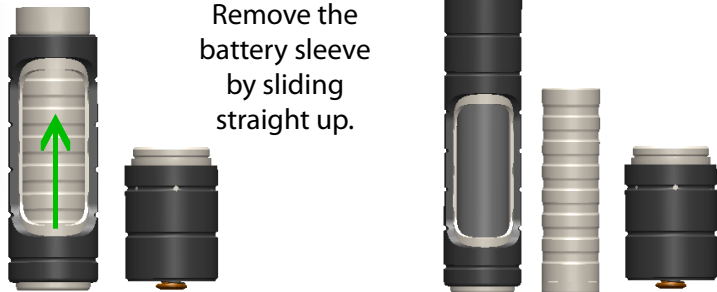
Keeping these area clear of debris and residue will make sure you have good air flow and vapor!

Disassembling the ThermoVape



Step 2

Remove the battery sleeve by sliding straight up.



Cleaning and Maintaining the ThermoVape

Step 1

Disassemble the ThermoVape and remove the Batteries.



Step 2

Wipe down all surfaces of the ThermoVape with a clean, dry cloth. Surfaces may also be cleaned with Isopropyl Alcohol wipes. When using Isopropyl alcohol wipes the ThermoVape must be completely dry before use.

Note: Do not use chemical cleaners on the ThermoVape as they may damage the finish or operation. Do not use water, or soap and water to clean the switch assembly (spring on contact) as this may corrode the metal contacts.

Step 3

Reassemble the ThermoVape by reversing the instruction on page 20.

Warning:

Do not disassemble the switch assembly as this will void the warranty!

Cleaning and Maintaining the ThermoVape

If your ThermoVape Bowl and Heater Core get really built up with herbal residue, you may need to give it a deeper clean.

Step 1

Remove the ThermoVape Heater Core following directions on page 20.

Step 2

Rinse with warm/hot tap water for 5-10 minutes. OR if it has a lot of residue boil the heater for 5-10 minutes. Then let air dry on paper towels overnight.



Heater Core



ThermoVape Rechargeable Battery and Battery Recharger

Charging ThermoVape Batteries with the Tenergy Rapid Charger

The ThermoVape Kit comes with 4 3.0Volt LiFePO Batteries They can be charged using the included wall adapter, or charged on the go using the including care adapter. The batteries will charge in 90 minutes or less.



Spare batteries and extra chargers are available for sale separately.

Battery Charger Information

Features:

1. Compatible with most 3.0 V LifePO4 batteries.
2. Built in auto cut off device. Will not overcharge batteries.
3. Green and red led indicators for standby, charging and complete status.

Caution:

1. This product is designed for LiFePO RCR123a batteries, to avoid personal injury and damage. Do not charge any alkaline, zinc chloride, zinc carbon type battery.
2. Do not expose the charger to rain or moisture.
3. Do not use the charger if it has received a sharp blow, been dropped or damaged in anyway.
4. To reduce risk of shock, disconnect the power cord from outlet before attempting to clean the charger.
5. Do not charge a leaking, corroded or dead battery.
6. Do not attempt to repair charger by yourself when service or repair is required, contact qualified service personal.
7. Do not try to disassemble the charger.
8. Always disconnect the charger from the power outlet when not in use.
9. Store the charger in a cool and dry place when not in use.

These batteries are sold by Thermo-Essence Technologies for the intended purpose of using them in Thermo-Essence Technologies products. They are not intended for use in other applications. These batteries can only be charged in compatible battery chargers. Please follow all charging instruction on Page 85 of this manual when charging LiFePO batteries.

Note: The above information is provided to Thermo-Essence Technologies by the manufacturers of the charger. Thermo-Essence Technologies does not manufacture the charger.

Troubleshooting the ThermoVape

Problem	Solution
Not Getting Vapor	Make sure the heater core is threaded tightly into the ThermoVape interface. Make sure the battery is charged. Make sure the bowl is filled and the herb are ground or cut.
Vapor Tastes Burnt	Decrease the amount of time you warm up the ThermoVape, if your herbs are very dry, or finely ground, or concentrated, the ThermoVape may perform better with less warm up time.
Decreased Vapor Production	Make sure the battery is charged. Clean the bowl and top cap holes to make sure you have good airflow. The batteries may also need to be replaced.

Troubleshooting the ThermoVape

Problem	Solution
My ThermoVape is working correctly but I cannot seem to get good vapor production.	Take a long, slower drag while keeping the ThermoVape in the on position. See Quick Tips for Better Vapor on page 12.
My ThermoVape is getting warm when I use it.	This is Normal
My Charger does not seem to be charging my batteries.	Make sure the batteries are in the correct orientation, and make sure the batteries are making good contact with the charger. Let your batteries cool off for a few minutes if they are hot, prior to charging.
It seems to be harder to turn my ThermoVape on.	Clean the ThermoVape. Make sure to thoroughly wipe down the switch sleeve and inside of main body. See page 21.

Troubleshooting the ThermoVape

Problem	Solution
I want more vapor.	You can get more Vapor by increasing the warm up time.
I lost the switch assembly or ORing.	Please contact us at: info@thermovape.com and we will send you a new one. See back of user guide for contact information.
I damaged my ThermoVape and want to see if I can get it fixed.	You can purchase replacement ThermoVape components. Please contact us at: info@thermovape.com
I have a problem that I think is covered by the warranty. Should I take it back to the store/website I bought it from?	No. Thermo-Essence Technologies will cover all warranty issues directly as we are the manufacturer. Please contact us at: info@apexvapor.com .

Troubleshooting the ThermoVape

Problem	Solution
Is the heater core replaceable.	Yes, we sell replacement heating cores. This item will wear out over time, depending on how much you use you ThermoVape.
The herbs seem like they are burning, or being vaped too much.	Decrease the amount of time you warm up the ThermoVape, if your herbs are very dry, or finely ground, or concentrated, the ThermoVape may perform better with less warm up time.
I don't think I understand how to use it correctly.	We have videos of how to use the ThermoVape you can view on our website.
My problem was not addressed.	Please contact us at: info@apexvapor.com. We will do everything we can to help!

Warranty

Thermo-Essence Technologies LLC brings you the best performance personal herbal vaporizer on the market. We believe with proper care and maintenance the ThermoVape Personal Herbal Vaporizer will last a lifetime.

Thermo-Essence Technologies LLC warrants the ThermoVape Personal Herbal Vaporizer against manufacturer defects for a period of 1 year from the date of purchase. Thermo-Essence Technologies believes in standing behind the products they manufacture.

Some products are consumable and will eventually need replacing after a length of time depending on usage and treatment. Estimations of product performance and duration are based on factory specifications. Thermo Essence Technologies LLC makes no claims to the actual performance and duration the Customer may experience with these products. Thermo Essence Technologies LLC offers only products we believe are of high quality. Our ultimate goal is to provide you, our Customer, with products and service to exceed your expectations.

Heater cores, batteries and battery chargers carry a DOA warranty. Heater cores carry a 3 month warranty, as they are consumables. Please inspect and test these products when they are received and follow the Warranty Replacement instructions below if any of the aforementioned products are defective.

What is not covered? (Exclusions): Abuse & Misuse. Defects or damage that result from improper operation, storage, misuse or abuse, accident or neglect, such as physical damage (cracks, scratches, cross-threading, etc.) to the product resulting from misuse.

Instructions for Warranty Replacement

PLEASE NOTE! For a replacement, each of these steps must be followed.
Thank you!

STEP 1: Package defective part in correct packaging.

STEP 2: Include original packing slip or receipt.

STEP 3: Please include the following description: A description of what is wrong with the product; your full name; your order number (if applicable) for the returned product. Your return address.

STEP 4: Prepare the package for safe delivery.

STEP 5: Address package to: Thermo-Essence Technologies LLC, 1011 #C Bransten Road, San Carlos, CA 94070.

STEP 6: Send package with proper postage.

STEP 7: Contact Thermo-Essence Technologies LLC about the defective part being returned for replacement.

Legal Disclaimer

All items available for purchase from Thermo-Essence Technologies LLC are hereby called products. These products are NOT intended to diagnose, treat, cure, or prevent any mental and/or physical conditions. People should not use these products if they: 1) are under the age of 18, 2) have weak or impaired immune systems, 3) are allergic to nicotine-based products, 4) have heart conditions and/or blood-pressure problems, are pregnant. Thermo-Essence Technologies LLC makes no claims intended to replace the advice of your healthcare professional and advises all customers to consult with a physician prior to using these products.

These products are NOT sold as such, Thermo-Essence Technologies LLC makes no claims as to the success these for smoking cessation and products may have for use as a smoking cessation device. These products are not intended for use with illegal substances.

By purchasing these products, Customer agrees to use products at their own risk. Under no circumstances will Thermo-Essence Technologies LLC be held responsible or liable, directly or indirectly, for any loss or damage that is caused or alleged to have caused in connection with use of or reliance on any products.

To insure quality, all products are inspected by Thermo-Essence Technologies prior to shipping. Upon receipt of package, Customer shall inspect products for order accuracy. Customer must notify Thermo-Essence Technologies LLC at info@ThermoVape.com of any order discrepancy within 7 days of receipt of their products. Upon notification, Customer will be contacted by Thermo-Essence Technologies LLC to make arrangements to rectify the issue.

**THERMO
ESSENCE**



technologies

thermovape

t₁

ThermoVape.com