

SEE Electrical Licensing with software key



Copyright

Copyright (c) May 2013 IGE-XAO. All rights reserved. No material of this manual, or any portion of it, shall be reproduced, transcribed, saved or translated, under whatever form and by whatever means, without the written authorization from IGE-XAO+XAO, 25 BOULEVARD VICTOR HUGO, IMMEUBLE LE PYTHAGORE, BP 90312 31 773 COLOMIERS CEDEX, FRANCE.

CONTENTS

SEE ELECTRICAL LICENSING WITH SOFTWARE KEY	1
A LICENSING VIA SOFTWARE KEY	4
A.1. LICENSE WITH A SOFTWARE KEY - INTRODUCTION	4
A.1.1. <i>Different Network Cards Used during Softlock Licensing</i>	5
A.1.2. <i>License with a Software Key</i>	5
A.1.3. <i>"Silent" licensing if using the "Remove the license when close the application" option</i>	10
A.1.4. <i>Terminal Server Support</i>	11
B USING V7R2 AND OLDER VERSIONS IN PARALLEL	12
B.1. CUSTOMERS WITH SOFTLOCK AND VERSION V7R1, V6R1 OR V5R1	12
C USING V4R1 AND V7R2	13
C.1. CUSTOMERS WITH SOFTLOCK AND VERSION V4R1	13

A LICENSING VIA SOFTWARE KEY

This chapter helps you to license *SEE Electrical*.

If you work with Administrator and User profiles, there are two procedures for installing and licensing:

- ✓ The software must be installed under the Administrator's account.

If the user must log on as main user on the computer, it is enough to fill in, and close the **License wizard**.

If the user logs on as "**User with limited rights**", rights for full access or rights for editing the main directory and all subdirectories of *SEE Electrical* must be given from the Administrator. If you use the "**Safe mode**" or **Backup**-function, this has to be done also for the folders '\$projects' and 'temp' in the *SEE Electrical* folder. (These folders are not generated on installation, but are automatically generated on the first execution of the "**Safe mode**" or **Backup**-functions.).

If *Windows* home version is used, it is not possible to enhance the rights for restricted users in folders. In this case we recommend that you install the program in the folder "*My files*", because here even users with restricted rights have enough rights.

The User profile must receive Administrator rights during the installation. The Administrator rights can be removed after installing and licensing.

A.1. LICENSE WITH A SOFTWARE KEY - INTRODUCTION

If you use a software key, the computer, where *SEE Electrical* must be licensed has to be connected to the internet.

If you do not have the possibility to connect your computer to internet at least to license V7R2, contact your dealer as you have to use a dongle in the future.

Hint:

The use of the software is allowed only within your contract and/or the License agreements (displayed during the installation).

Attention:

If a new installation of *SEE Electrical* is needed later, the licensing procedure must be executed again.

The releasing of the license must be made before uninstalling or reinstalling *SEE Electrical*, or before reinstalling the operating system on this PC or changing the hard disk, etc.

It is required to free the license in order to register the *SEE Electrical* license again after an update.

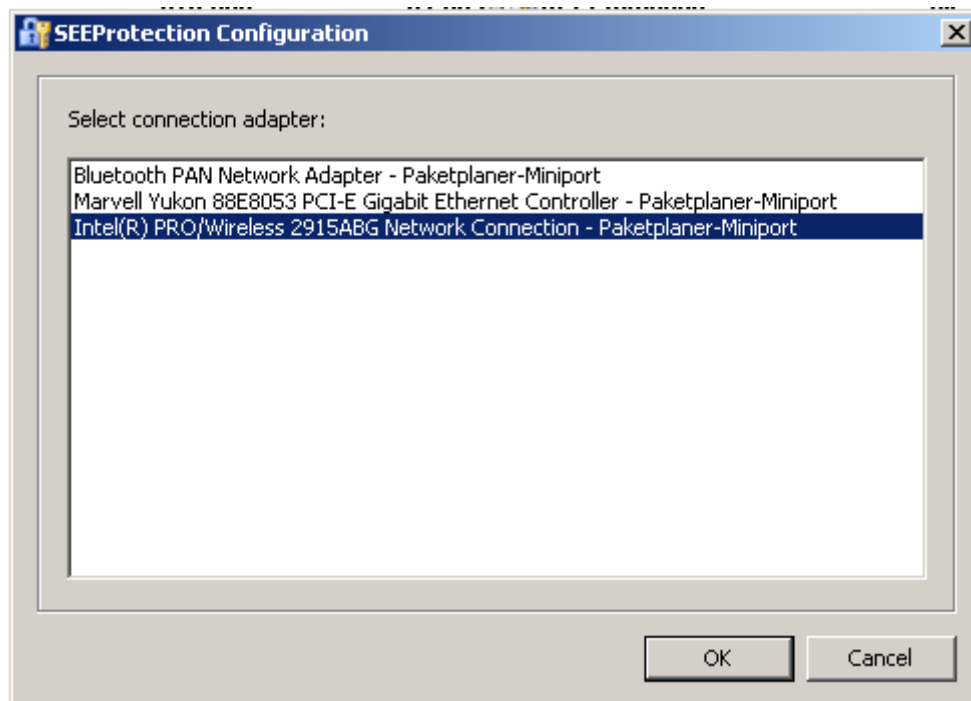
After licensing, you can use *SEE Electrical* unlimited.

If you are not familiar with the program, we recommend to work through the *Workspace Example 1* (in the *User Manual*) to receive a general introduction into the program.

A.1.1. DIFFERENT NETWORK CARDS USED DURING SOFTLOCK LICENSING

Before you start the licensing procedure, SeeProtectionConfig.exe can be used to define which network card shall be used to calculate the Softlock (in case, for example, an internal network card is present at the computer but a wireless networking key has to be used when licensing).

- Choose the one to use and press **OK**.



A.1.2. LICENSE WITH A SOFTWARE KEY

By using this method of licensing, it is possible to enable an already installed license again (a license can be used on a company PC and on a laptop alternately.)

The releasing of the license must be made before uninstalling or reinstalling of *SEE Electrical*, or before reinstalling the operating system on this PC or exchanging the hard disk etc. It is required to free the license in order to register the *SEE Electrical* license after an Update again.

If *SEE Electrical* Version *V7R2* and an older version are used on the same computer parallel, the following particularities apply: you have to release the license for the version *V5R1* before you can license the version *V7R2* and vice versa.

Installation Manual

COPYRIGHT © 2013 IGE+XAO. All rights reserved

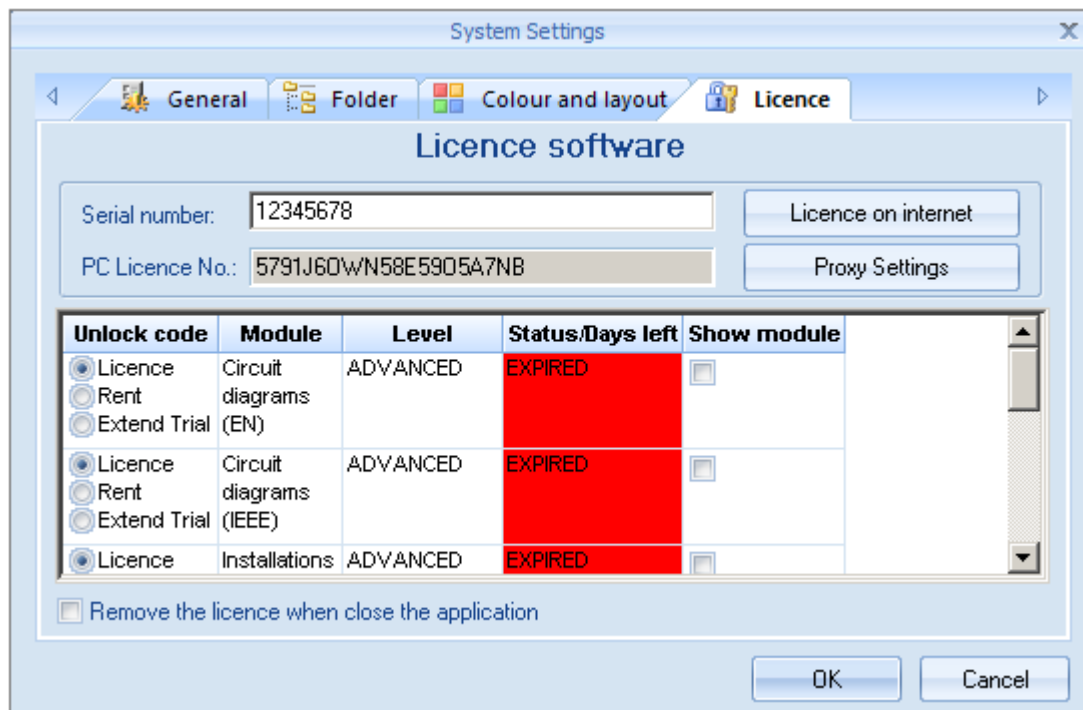
If you start *SEE Electrical* for the first time, the License wizard appears automatically.

- Enter your company data here.
- Select the type of protection used for your software: "**My software is protected with a software key or this is a trial version**".
- Click **Next**.

The License wizard dialog box appears (see below).

If you don't register the license now, you can perform this by executing **File menu > System Settings > License** tab. In this case, all the workspaces must be closed.

The following dialog box appears:



System Settings

General Folder Colour and layout **Licence**

Licence software

Serial number: 12345678

PC Licence No.: 5791J60WN58E5905A7NB

Licence on internet

Proxy Settings

Unlock code	Module	Level	Status/Days left	Show module
<input checked="" type="radio"/> Licence <input type="radio"/> Rent <input type="radio"/> Extend Trial	Circuit diagrams (EN)	ADVANCED	EXPIRED	<input type="checkbox"/>
<input checked="" type="radio"/> Licence <input type="radio"/> Rent <input type="radio"/> Extend Trial	Circuit diagrams (IEEE)	ADVANCED	EXPIRED	<input type="checkbox"/>
<input checked="" type="radio"/> Licence	Installations	ADVANCED	EXPIRED	<input type="checkbox"/>

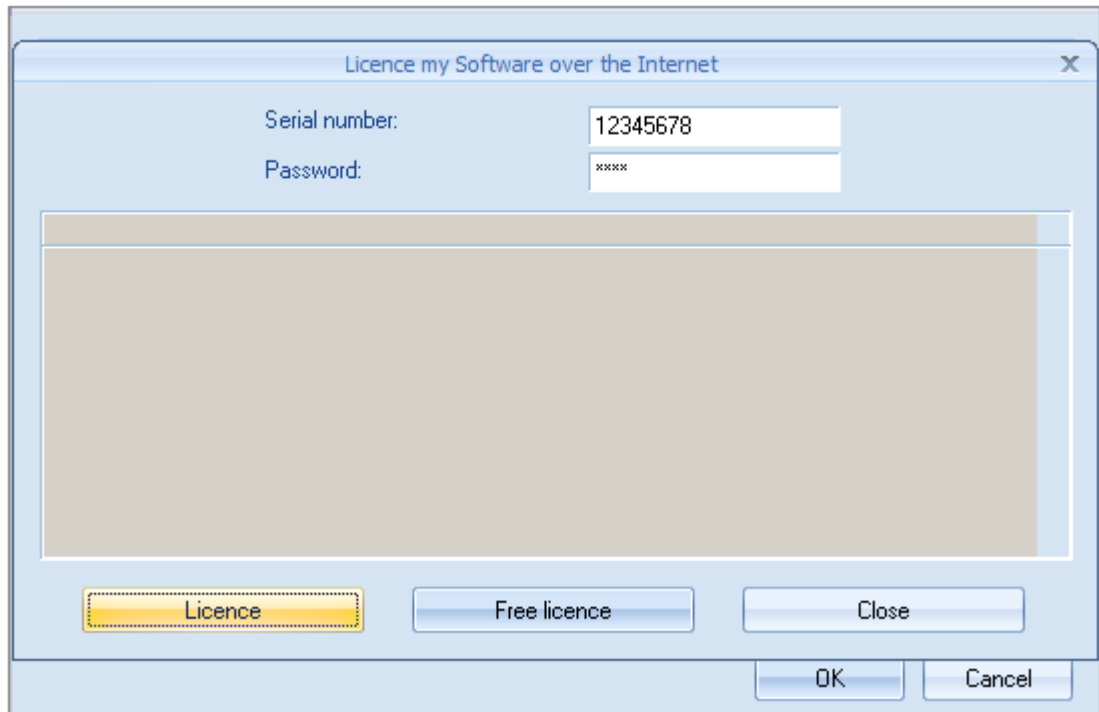
☐ Remove the licence when close the application

OK Cancel

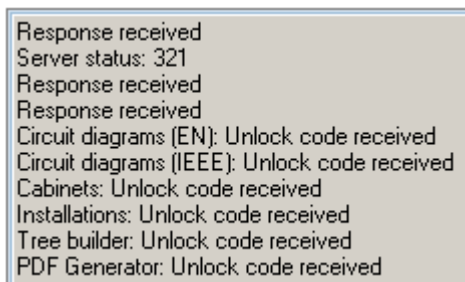
Various data can appear in the dialog box.

- Enter the serial number as given in your certificate. Each serial number consists of 8 digits.
- If you need to define *Proxy* settings, refer to the chapter below.
- Press the **License on Internet** button. Make sure before that the Internet connection is available.

You will come to the internet site where you can generate your license code.



- Enter the licence password as given to you in your certificate. Upper and lower case is not considered.
- Click the **Licence** button. If the license request is correct, the following message appears:



If you possess several serial numbers of *SEE Electrical*, never licence one serial number while another serial number is licensed on this PC. Otherwise, you will lose one license. If one license is already available, you will receive a warning message.

- Close the dialog box.
 - Click **Finish** in the *License wizard*, and then click **OK**.
- After clicking on **Finish**, you can use *SEE Electrical* unlimited within your license.

Free license again

By clicking the **Free license** button in the *License my software over the Internet* dialog box, you can remove your license code from the PC where it was installed, and then you can license *SEE Electrical* on another PC.

Not all users are able to release their license via the internet. It depends on your contract. If you cannot release your license and you would like to, please contact your local supplier.

Before clicking the **Free license** button, enter your licence password again.

```
Request sent
Response received
Response received
Circuit diagrams (EN): Unlock code received
Circuit diagrams (IEE): Unlock code received
Cabinets: Unlock code received
Installations: Unlock code received
Tree builder: Unlock code received
PDF Generator: Unlock code received
Licence code(s) removed
```

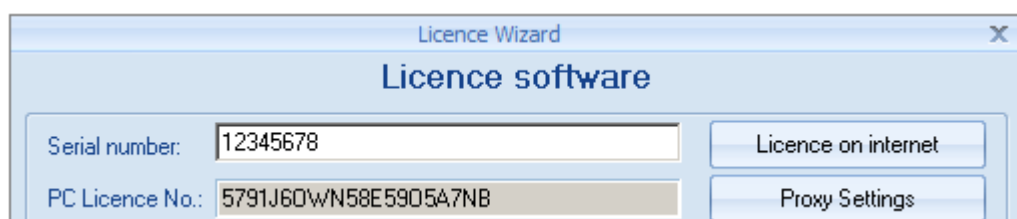
If you receive a message "*Licence code(s) removed*", the licence has been released again.

Remove licence automatically when SEE Electrical is closed

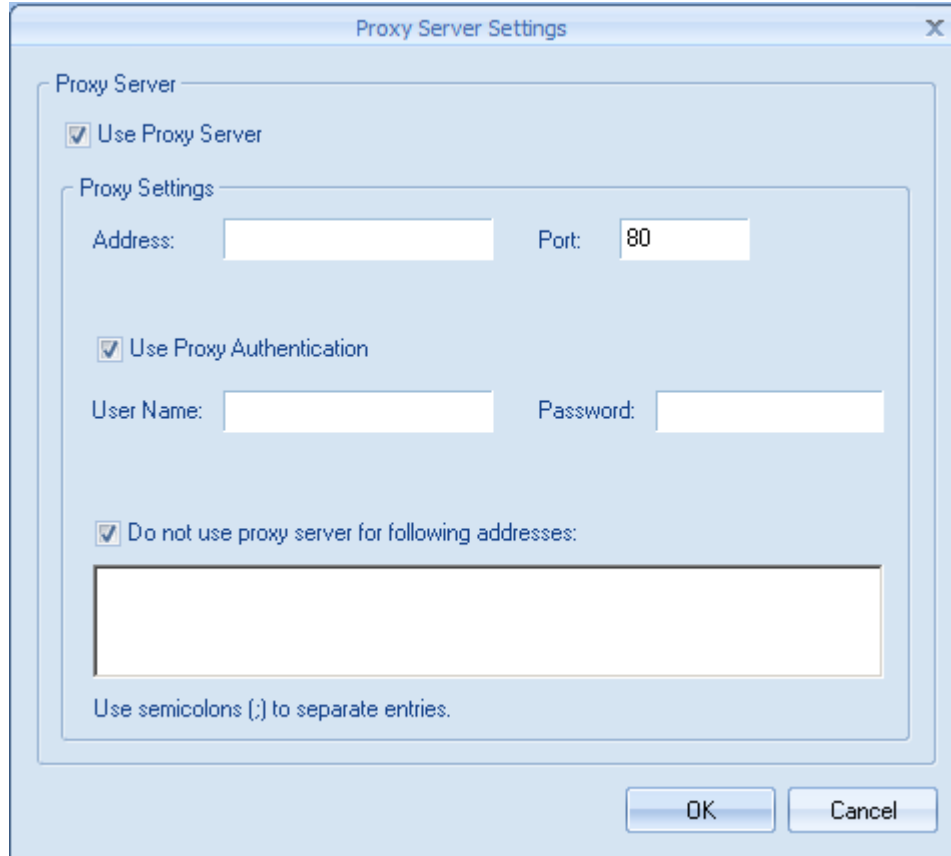
It is possible to remove the license each time, when the program is closed. If you want to do so, enable the setting "**Remove the license when close the application**" in this window. Make sure you are connected to the internet. If the setting is enabled, the system asks each time you close the program, if the licence shall be removed. If you choose **Yes**, you have to licence again next time you want to use the program.

Proxy settings

The **Proxy settings** button in the License Wizard dialogue to allow you a connection by using proxy settings



- Click the **Proxy Settings** button and enter the information in the dialogue that appears:



The image shows a 'Proxy Server Settings' dialog box. It has a title bar with 'Proxy Server Settings' and a close button. Inside, there's a 'Proxy Server' section with a checked checkbox 'Use Proxy Server'. Below that is a 'Proxy Settings' section containing: 'Address:' and 'Port:' fields (with '80' in the port field), a checked checkbox 'Use Proxy Authentication', 'User Name:' and 'Password:' fields, and a checked checkbox 'Do not use proxy server for following addresses:' followed by a large empty text box. At the bottom of the text box is the instruction 'Use semicolons (;) to separate entries.' At the bottom right of the dialog are 'OK' and 'Cancel' buttons.

- Enable "**Use Proxy Server**".

The input fields for IP address "**Address**" and port of the Proxy-server "**Port**" are activated.

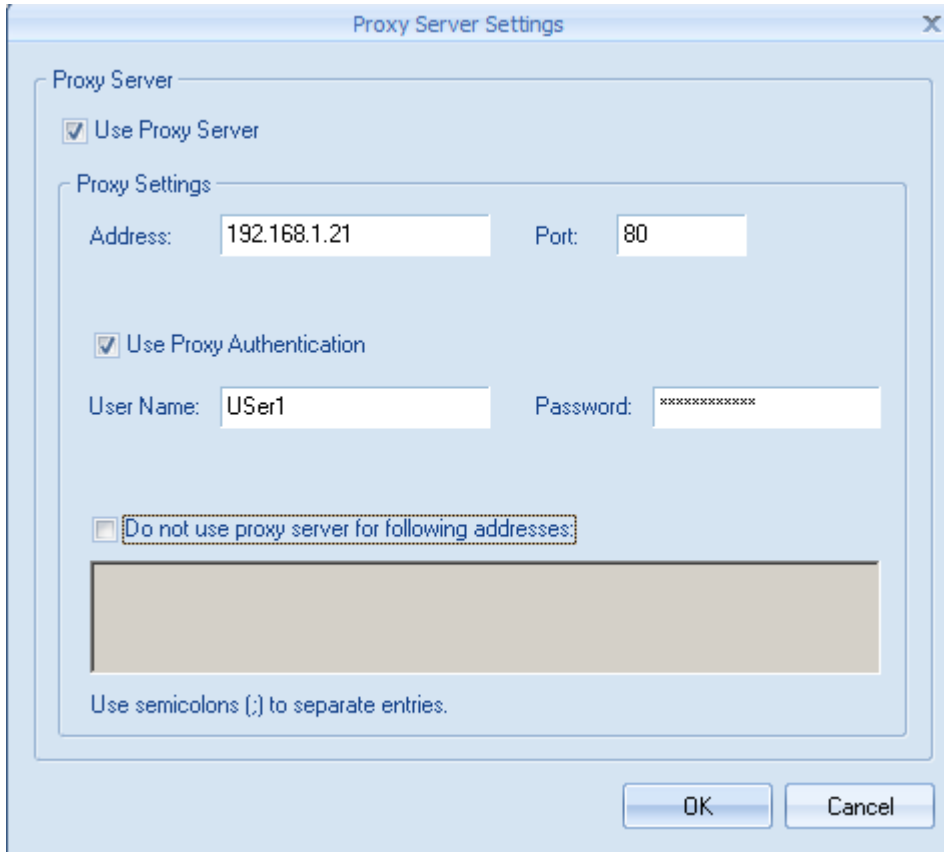
If you do not know the appropriate values, ask your network administrator.

If you use a Proxy server with authentication, you can switch the setting "**Use Proxy Authentication**" and type the "**User Name**" and the "**Password**" used for this.

"Do not use proxy server for following addresses:"

You can click to select the Bypass proxy server for local addresses check box, if you do not want the proxy server computer to be used when you connect to a computer on the local network (this may speed up performance). For more information refer to <http://support.microsoft.com/kb/135982>.

Example:



Save your settings with **OK**.

A.1.3. "SILENT" LICENSING IF USING THE "REMOVE THE LICENSE WHEN CLOSE THE APPLICATION" OPTION

If you use the **"Remove the license when close the application"** option, a new registry key - License\General\AskToLicenseOnOpen – allows you to define if the program will ask you or not about the licensing on the startup.

Value 1 - a message appears.

Value 0 - the message will not appear but the software will try to license automatically in case there is a valid license code.

This new registry setting is useful when you try to open a project from the *Windows Explorer* or PDM systems like Microsoft Share Point etc. Then it won't be possible to open a project if this message appears, so you need to switch it off.

A.1.4. TERMINAL SERVER SUPPORT

SEE Electrical can be used in terminal server environments for licenses licensed via softlock (by internet or local license server) or FlexLM. It is necessary to license each individual user. The licensing algorithm detects if the software is used in such an environment and adds user name to the licensing process. For example, if three users want to use the software in the same time you will need three licenses..

Dongle protection cannot be used if the software is installed on terminal server. In case the software is installed on terminal server (or remote desktop, that means in any case where RDP protocol used) a message informs you in case protection by dongle is chosen.

B USING V7R2 AND OLDER VERSIONS IN PARALLEL

B.1. CUSTOMERS WITH SOFTLOCK AND VERSION V7R1, V6R1 OR V5R1

It is possible to use *one of these versions* and *SEE Electrical V7R2* at the same time if your licence code is the same. The procedure is the following:

- Remove, on the internet, the licence code for the older version.
- Open *SEE Electrical V7R2*.
- Licence the product.

After you have licensed *SEE Electrical V7R2*, you have to license *SEE Electrical V6R1* also. It is not automatically licensed. After you can use the two versions parallel.

Note

You can remove the licence only for SEE Electrical V7R2. In this case the license for SEE Electrical V6R1 is automatically removed.

C USING V4R1 AND V7R2

C.1. CUSTOMERS WITH SOFTLOCK AND VERSION V4R1

The software used for the protection had to be changed to improve support with *MS Vista* and *Windows 7*. Additionally with the new protecting software it is not necessary any more to have administrator rights to license or remove the license.

Because of the change of protection the licensing of the program by software in the future is only possible, if the computer is connected to the internet while licensing.

If you have licensed by software the *V4R1* and do not have the possibility to connect your computer to the internet in order to license *V7R2*, please contact your dealer as you have to use a dongle.

Because of the new protection software, you have to put your *V4R1* license to the database on the internet before you can license the *V7R2*. For the installation you still need Administrator rights.