

warmtec[®]

AIR CURTAINS

INSTALLATION MANUAL

WRM06+

WRM08+

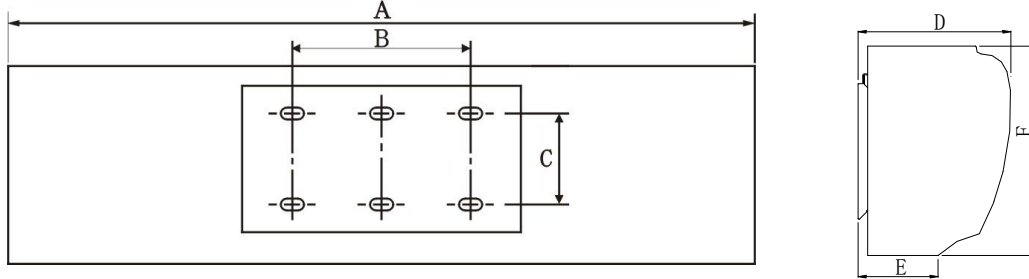
WRM10+

**Thanks for purchasing this Air Curtain,
Please read these instructions carefully before use.**

1、PRODUCT INTRODUCTION

As one of the new top-class products for modern decoration, air curtain is also matched with the air-conditioner. And it is installed at the entrances of supermarket, theater, meeting room, hotel, office room, working shop and storeroom to prevent the dust, mosquito and nocuous air, and so on.

2、 IDENTIFICATION & INSTALLATION DIMENSIONS

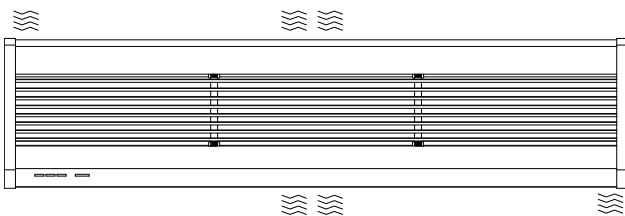


MODEL	A	B	C	D	E	F
WRM06+	900	440	90	190	105	260
WRM08+	1200					
WRM10+	1500					

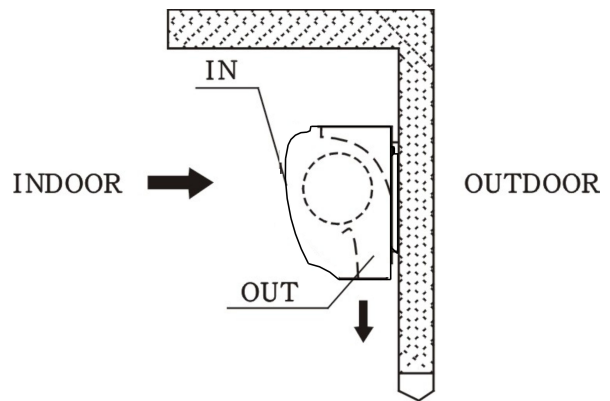
3、 INSTALLATION CAUTION

Must follow the following asking when installing air curtain:

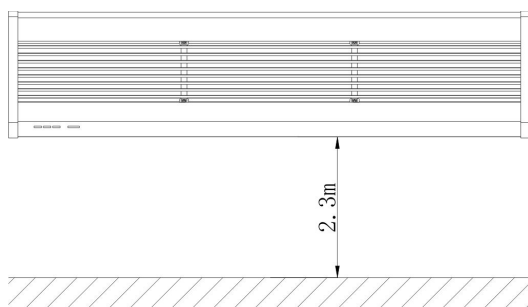
3.1 Please install the unit in a sturdy place to avoid the shaking and ensure its security (because it maybe causes the wall becoming flexible or shaking and noise.



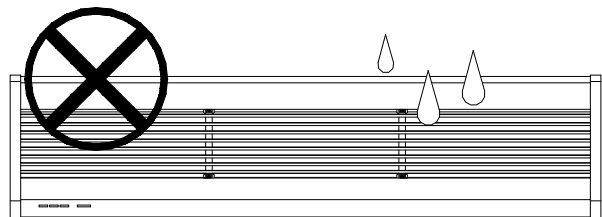
3.2 Please install the unit inside the room.



3.3 Don't install the unit too low, no less than 2.3 meter from the ground. When the entrance is wider than the unit, it is recommended to install two or more units in parallel. In this case, provide 20-40mm gaps between the units.



3.4 Don't install the unit in a place where it is splashed by water, exposed to excessive steam, explosive gas or corrosive gas.

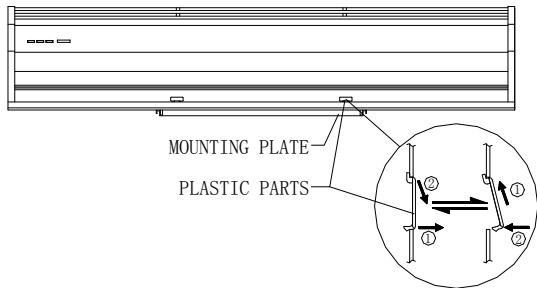


4、INSTALLATION

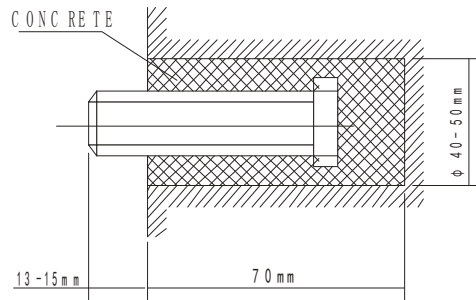
A、Installing on the concrete wall:

4.1.1 Removed the mounting plate

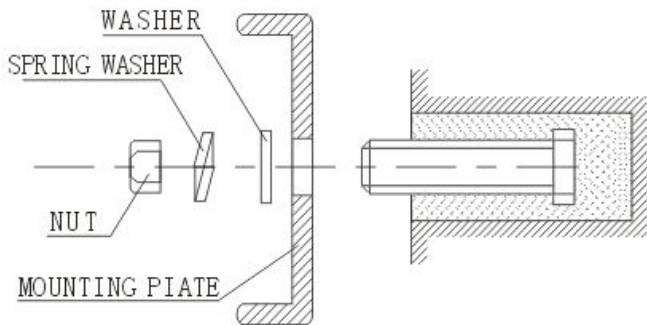
Remove the plastic parts, unclamping the fixed screws on the back of main body to remove the mounting plate.



4.1.2 Fix the bolts in the proper position (Decide the position with the mounting plate and pour cement into the bolt holes.)

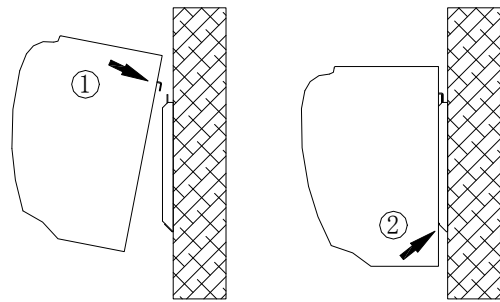


4.1.3 When the cement has freeze, fit the mounting plate (use the washer and nut according to the following)



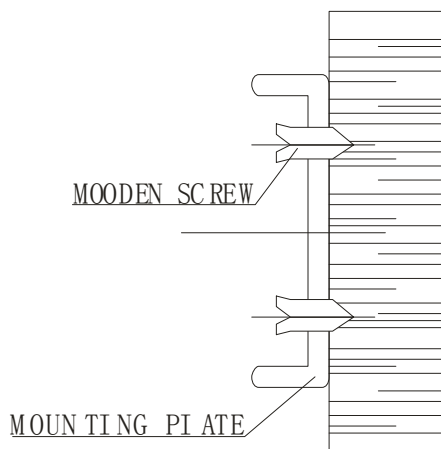
4.1.4 Install the main body

Set the main body onto the upper end of the mounting plate and clamp it as shown.

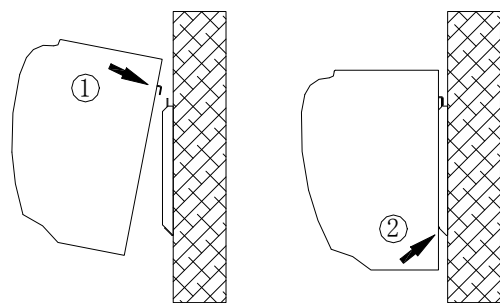


B、Installing on the wooden wall

4.2.1 Fix the mounting plate in the proper positions with tapping screw.

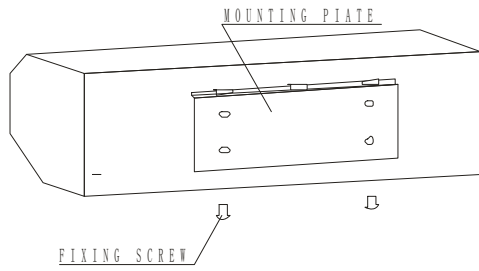


4.2.2 Same as the step 4 of A

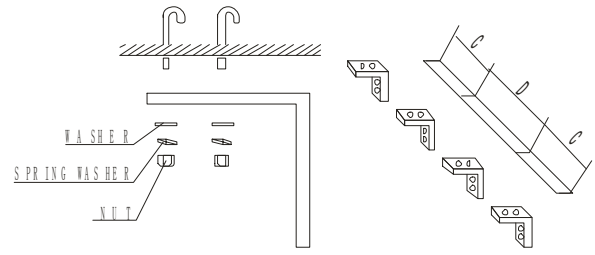


C、 Hanging from the ceiling

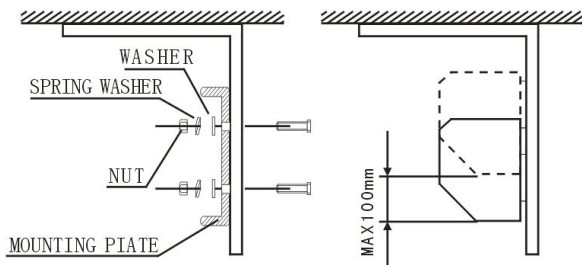
4.3.1 Remove the mounting plate from main body (Same as step 5.1.1)



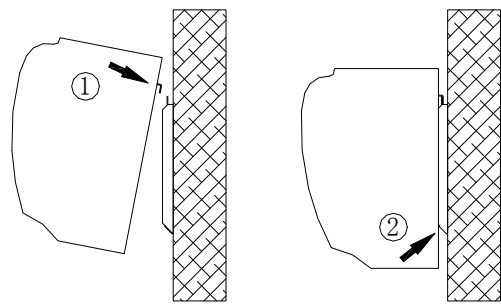
4.3.2 Fixing ceiling brackets as Fig.



4.3.3 Set the mounting plate on the ceiling brackets and ensure safe & fixing (use the bolts attached to the ceiling brackets as Fig. Using the ceiling brackets to hang from the ceiling, the position of mounting plate can be adjusted in the limit of 100mm.



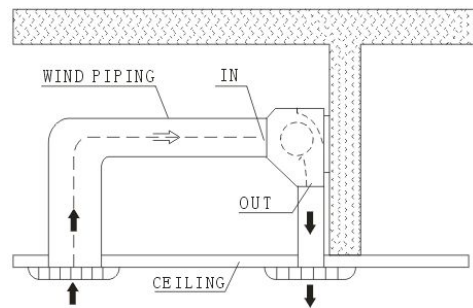
4.3.4 Do the same as step A to install the main body.



D、 For above ceiling

4.4.1 Fix the air curtain as in the procedure for installing on the concrete wall.

4.4.2 Then pipe as right Fig. Instructs.



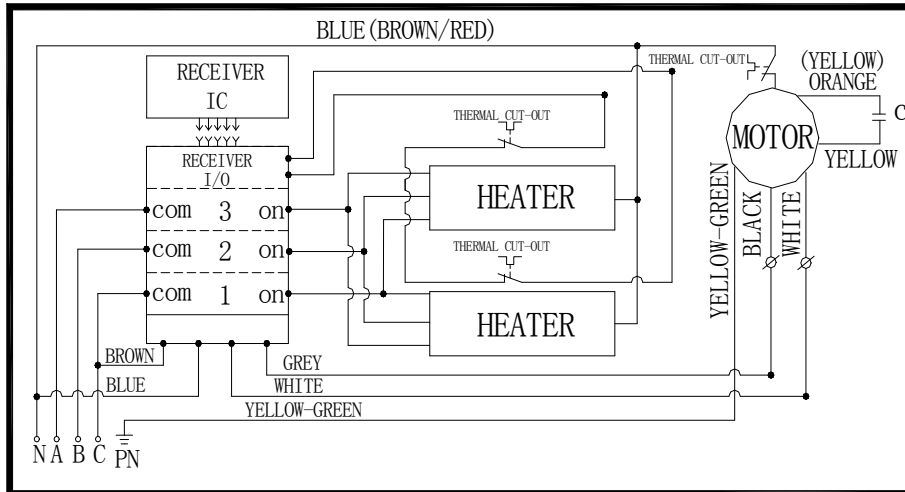
5、 HEATED MODEL TECHNICAL PARAMETER

MODEL	Diam Of Wheel (mm)	Volt. /Freq. (V~ /Hz)	Motor power (W)	Heater power (KW)			Temp. (K)	Max.air speed (m/s)		Air volume (m³/h)		Noise(db)		Net weight (Kg)
				I	II	III		H	L	H	L	H	L	
WRM06+	115	400/50	160	2	4	6	35-45	9.5	8.5	1200	1000	57	55	13.5
WRM08+			200	2.7	5.3	8				1700	1500	58	56	16
WRM10+			230	3.3	6.7	10				2200	1900	59	57	18.5

LINE SIZE

ITEM \ POWER	THREE PHASES (380V~ MAIN LINE:A、B、C、N)							
HEATER POWER (kW)	3	4	5	6	8	10	12	14
MAIN LINE (mm ²)	1.5		2.5		4.0		6.0	
EARTH LINE (mm ²)	0.75		1.5		2.5		4.0	

Do not operate the air curtain if there is a voltage overload.



6. OPERATION

6.1 Control by remote control

- a. Press the **[ON/OFF]** button to turn on the unit. The unit will automatically start in non-heating mode at high speed. A green light will be displayed on the receiver.
- b. Press the **[SPEED]** button to change the speed of the unit to high or low.
- c. **FOR THREE PHASE UNIT:** Press the **[POWER]** button to operate the unit in heating mode at low power. A red light will be displayed on the receiver. Press the **[POWER]** button again and the unit will change from low power to medium power with two red lights displayed. Again press the **[POWER]** button and the unit will change from medium power to high power with three red lights displayed. Press the **[POWER]** button again and the unit will switch from heating mode to non-heating mode. The red lights displayed change to a single green light.
- d. When the unit operates in non-heating mode, press the **[ON/OFF]** button to turn off the unit.
- e. When the unit operates in heating mode, press the **[ON/OFF]** button. The unit switches to non-heating mode at high speed. The indication light turns to a green flicker light. The unit will continue to operate in non-heating mode for 3 minutes and then stop.

6.2 Control by the control panel in the unit is the same function as 6.1.

6.3 Overheat protection:

When the heater temperature overheats (over 135°C), heating mode will stop and switch to non-heating mode automatically, at the same time the indication light will change to green. Once the heater temperature drops down below 135°C, press the **[POWER]** button to continue working in heating mode.

7. CAUTIONS

- a) Use the unit at the rated voltage and frequency indicated on the nameplate.
- b) Please do not connect power supply until the machine is installed.
- c) Maintenance must be done every year.
- d) Never use petrol, benzene, thinner or any other such chemical for clearing the unit.
- e) Don't allow water or any substances enter the motor.
- f) When connected with power socket, it is advisable to choose an appropriate plug. If connected to a power source directly, use a safety switch.