
Xtreamer JoyZ User Manual



Phone display & key basics

To turn on your JoyZ, long press **Power Key**.

To turn off your JoyZ, press and hold **Power Key** till Phone options menu appears. And then touch **Power off**.

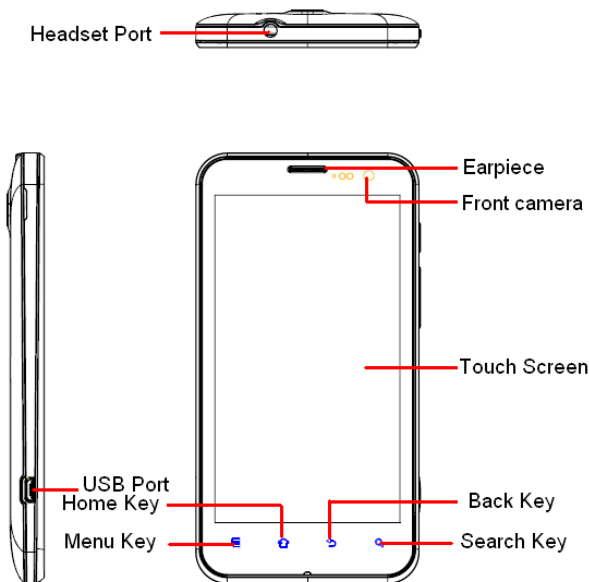
HOME Key: Press to return to the Home screen. Press and hold to bring up the recent applications window.

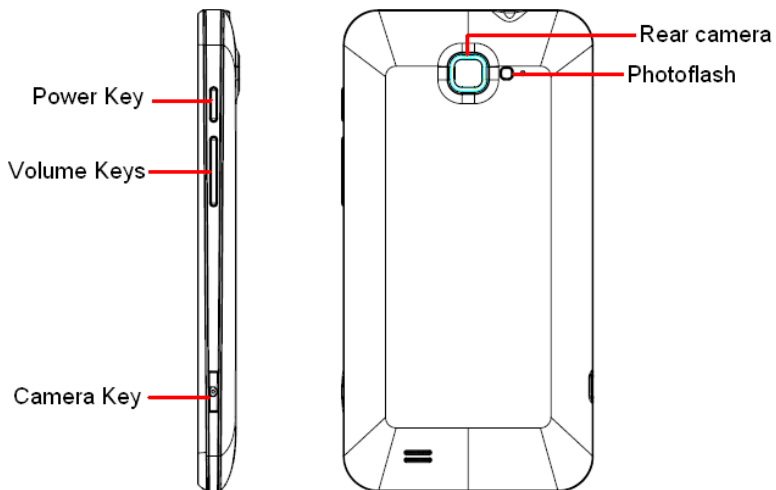
MENU Key: Press to open a list of actions you can take on the current screen.

BACK Key: Within a menu, press to return to the previous screen or to dismiss a dialog box or menu. When the onscreen keyboard is open, press to close the onscreen keyboard.

Search Key: On the Home screen, opens search for searching your phone and the web.

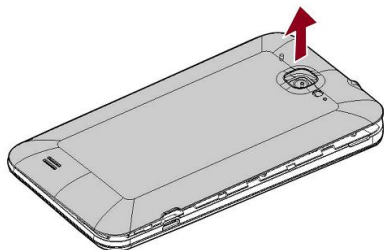
Volume Keys: Press to adjust the volume.



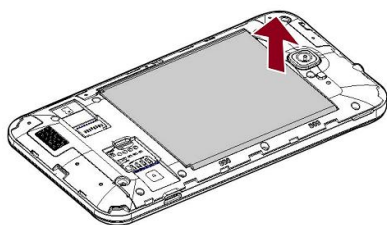


Installing the battery and SD Card

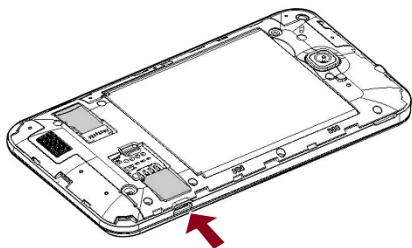
(1) Remove the back cover



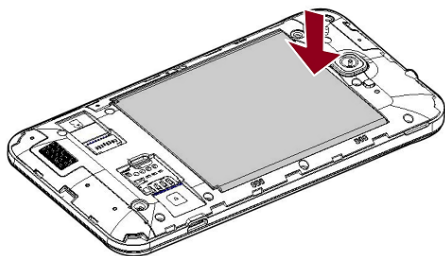
(2) Remove the battery



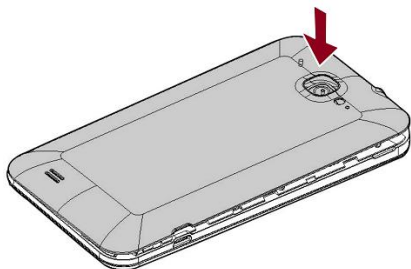
(3) Install the SIM card



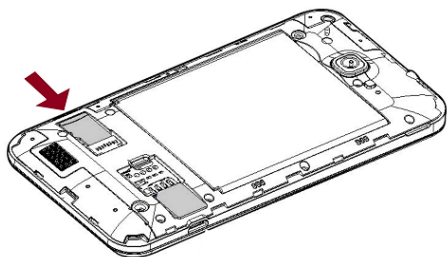
(4) Install the battery



(5) Install the back cover



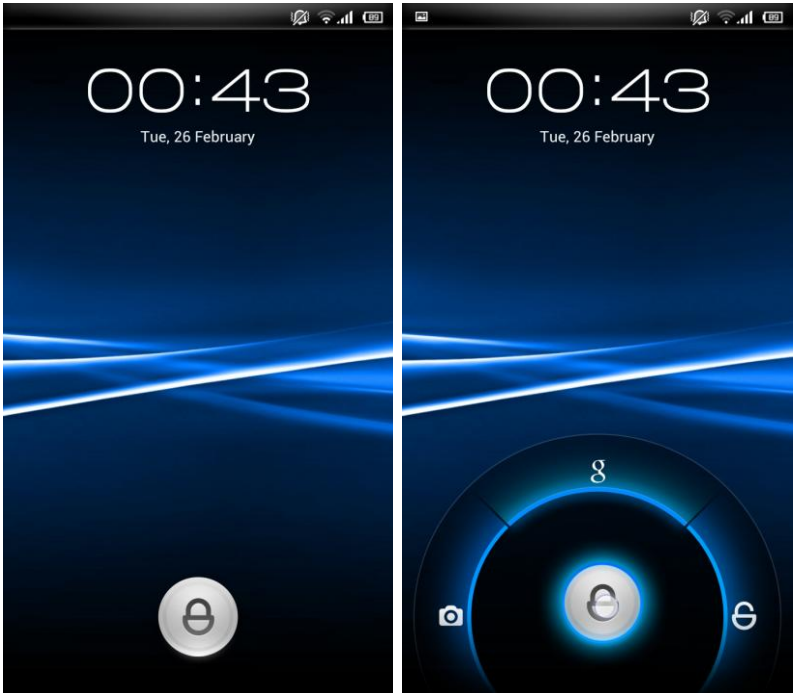
(6) Insert T-flash card



Locking and unlocking

Press Power Key to wake up/lock screen.

In the lock screen, touch icon  not lift and slide to the icon  location in order to unlock screen.



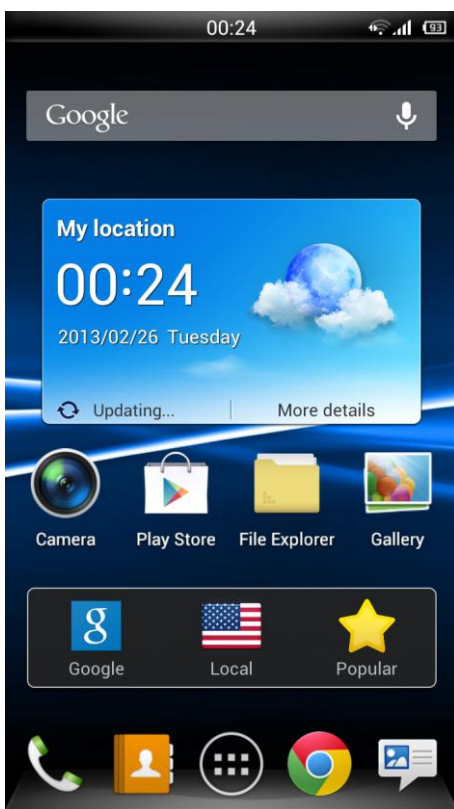
Home screen

Wherever you are, whatever you're doing on your JoyZ, simply press **HOME Key** to return to Home screen.

The home screen is your starting point for using applications on your phone. You can customize your Home screen as you like.

To add a Home screen item, touch and hold a specific application or widget add it to the home screen.

To remove items from the Home screen, touch and hold an item until **X Remove** Remove icon appears , drag it to the Remove icon.

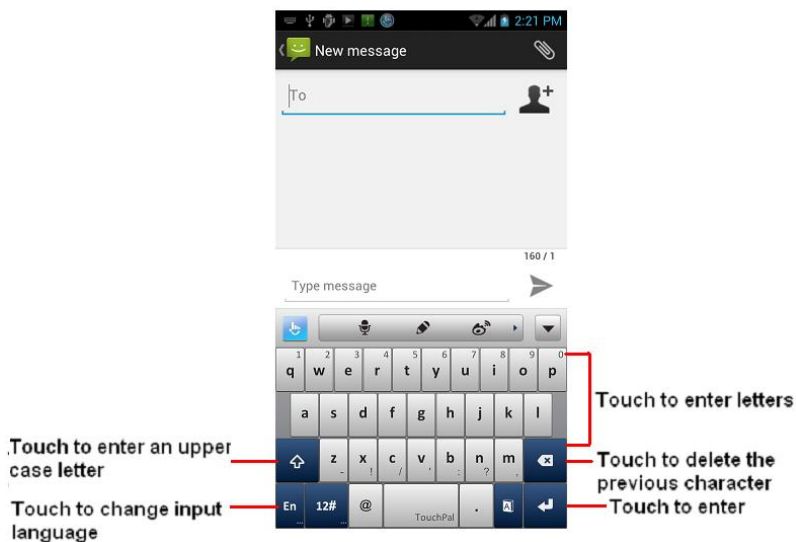


Onscreen Keyboard

When you start a program or select a field that requires text or numbers, the onscreen keyboard becomes available.

When you do not need the keyboard, you can close it by pressing Back Key.

To adjust onscreen keyboard settings, you can go to **Settings > Language & input > Android keyboard**.




Phone calls

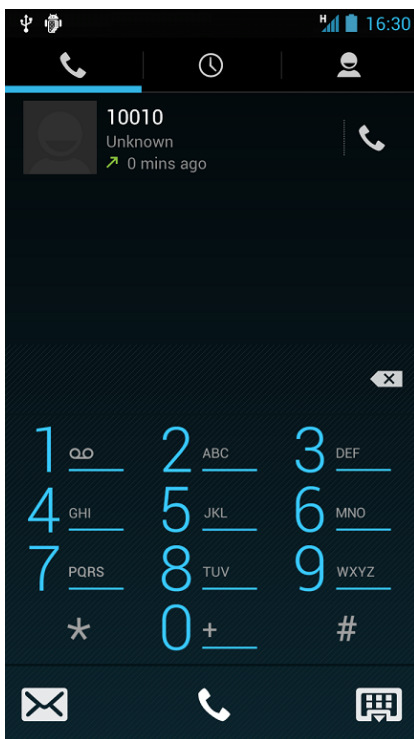
To make a call, touch a phone number in Contacts, an Email, a text message or anywhere on your phone.

You can also enter the phone number manually by virtual keypad and dial directly.

To answer a call, drag the green phone icon to the right.

To reject a call, drag the red phone icon to the left.

To end a call, touch the End Call icon .

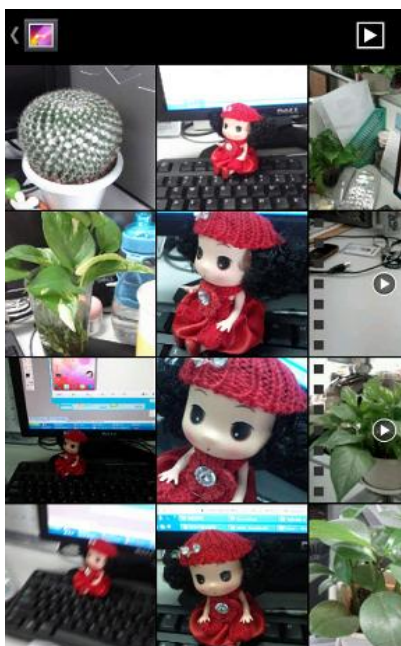


Gallery

Gallery lets you to access photos and videos you have taken. For photos, you can do basic editing tasks, set them as wallpaper or contact picture and share them to your friends.

To view a picture, press **Home Key**, touch the application tab and then touch Gallery icon.

Slide your finger left or right to move between pictures.



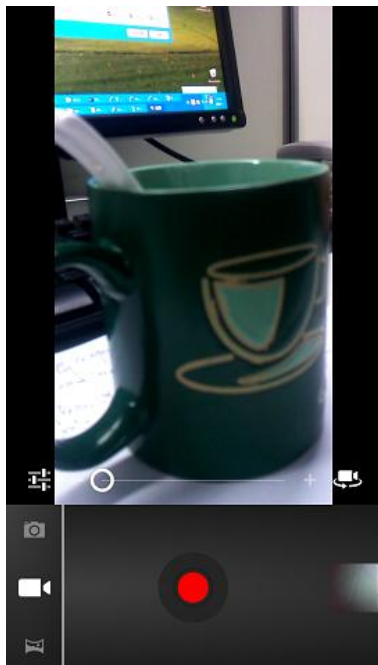
Camera

Your phone lets you take pictures and record videos with the built-in camera.

To open camera, press Home Key, touch the application tab and then select **Camera**.

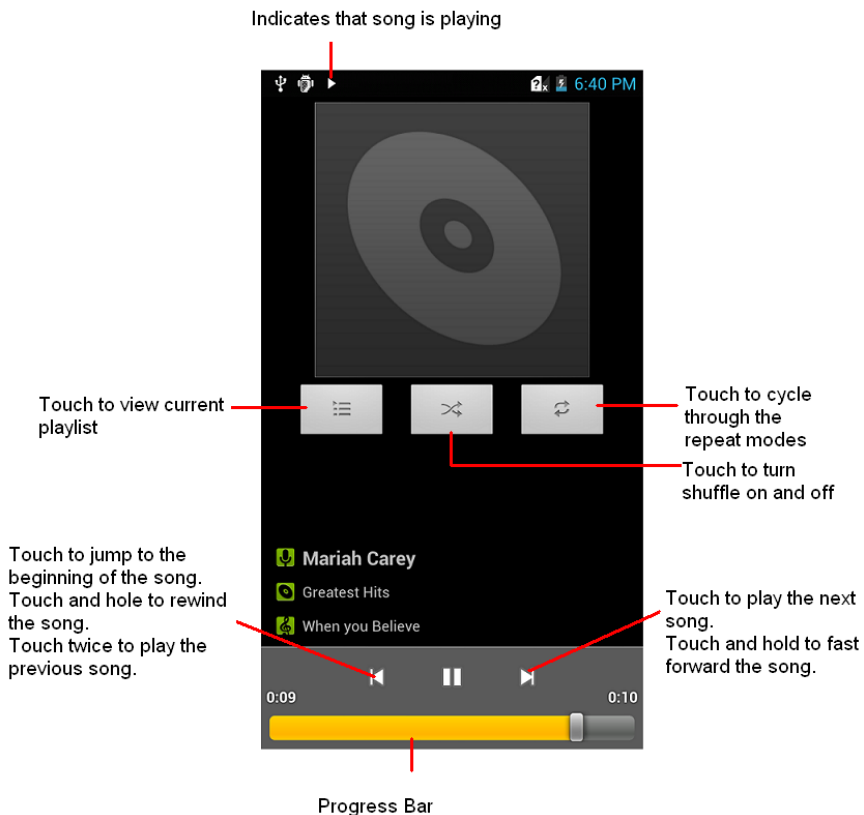
In picture mode, touch icon  to take a picture.

In video mode, touch icon  to record a video.




Music

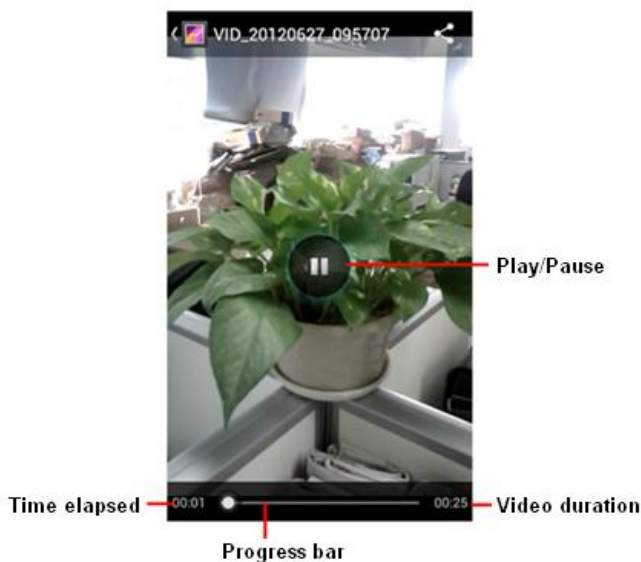
At any level in your music library, touch and hold a list (a song, artist, album or playlist) to open the context menu. Select a song to play and go to the playback screen.



Video

To record a video, press Home key, touch application tab and then touch **Camcorder**. You can also touch  icon and switch to video mode in **Camera** menu.

To play video files, press Home key, touch application tab and touch **Videos** icon. Touch a video you want to watch in the video list to play.



Browser

Browser supports you to browse web pages when your JoyZ is connected to available network.

To connect to WLAN or enable mobile network, you can go to **Settings > Wireless & networks.**

Open the Browser screen and tap the web address tab to enter the address you'd like to visit.

To zoom in or zoom out within a web page, you can also pinch your fingers together or apart.



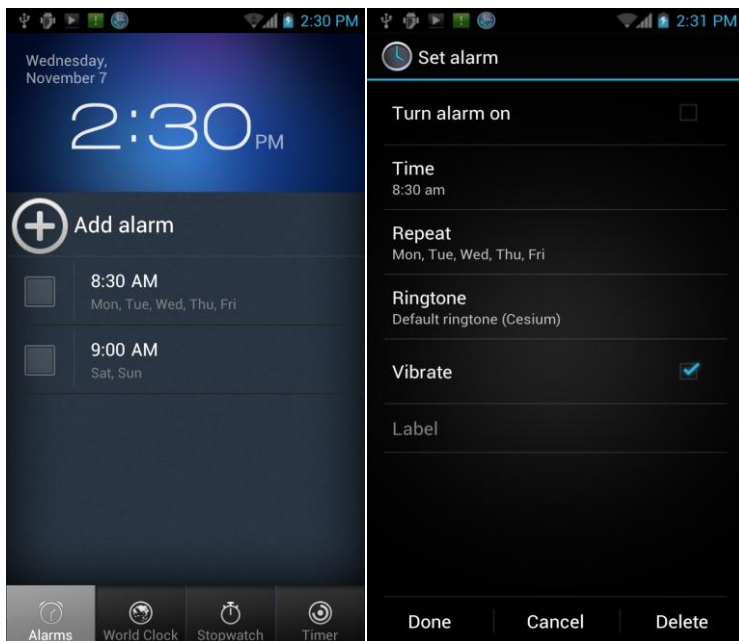
Clock

Your JoyZ has a built-in alarm clock which enables you to set multiple clocks.

To set an alarm, touch **Add alarm**. After editing the alarm details, touch **Done** to save the alarm.

To turn alarm off, long press an alarm and select **Turn alarm off** on the context menu that appears.

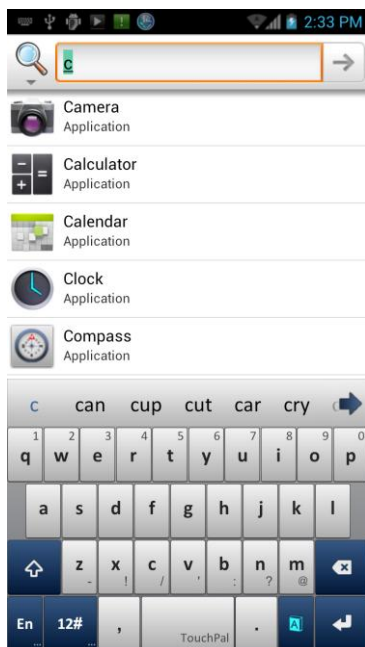
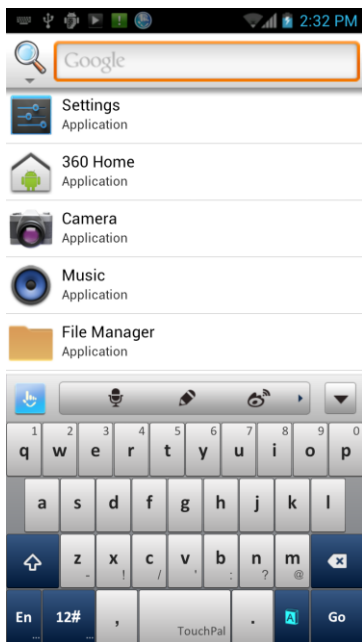
To delete an alarm, long press the alarm and select **Delete alarm** on the context menu that appears.



Search

To search your JoyZ, press **Search Key** to open the search bar. Type in what you'd like to search, the search results will be listed under the search bar.

To make search faster, you can select the search type like All, Web, Apps, Contacts or others.



Safety Information and Notices

Failure to comply with the following precautions may be dangerous or illegal.

Please carefully read and observe the terms below:

Safe power on

Do not use your mobile phone where it is forbidden to use or you might cause a disturbance or danger.

Safe transportation first

Please observe all related local laws and regulations.

Please drive with both hands.

Transportation security should be considered when driving.

Disturbance

All mobile phone performances might be disturbed

Turn off when in hospital

Please follow related limitations.

Please turn off your mobile phone when near a medical instrument.

Turn off on an airplane

Please follow related limitations.

Do not use your phone on an airplane.

Turn off when at a gasoline station

Do not use your mobile phone at a filling station or around fuels or chemicals.

Turn off around exposure Area

Please observe related limitations and do not use your mobile phone around an area where explosions can occur.

Proper use

As described in this manual, your mobile phone can be used only in right location.

If possible, please do not touch the antenna area on your phone.

Use qualified after sale service

Only a qualified maintainer can install or repair your mobile phone.

Accessories and batteries

Only use the authorized accessories and batteries and do not connect to unmatched manufacturers or products.

Waterproof

Your mobile phone is not waterproof. Please keep it away from water.

Backup

Do remember to make a backup or keep a written record of all important information saved in your mobile phone.

Connect to other devices

Please read the user manual of the device to get more detailed security instructions before connecting to other devices and do not connect to unmatched product.

SOS emergency calls

Make sure your mobile phone is switched on and in a service area. In home screen, tap the dial key, input the SOS number, then press the Dial Key. Tell where you are and do not hang up without permission.

Specific Absorption Rate (SAR) information

This phone is designed and manufactured not to exceed the emission limits for exposure to radio frequency (RF) energy set by the Federal Communications Commission of the U.S. Government. The exposure standard for wireless mobile phones employs a unit of measurement known as the Specific Absorption Rate, or SAR. The SAR limit set by the FCC is 1.6W/kg. *Tests for SAR are conducted using standard operating positions accepted by the FCC with the phone transmitting at its highest certified power level in all tested frequency bands. Although the SAR is determined at the highest certified power level, the actual SAR level of the phone while operating can be well below the maximum value. This is because the phone is designed to operate at multiple power levels so as to use only the power required to reach the network. In general, the closer you are to a wireless base station antenna, the lower the power output.

The highest SAR value for the model phone as reported to the FCC when tested for use at the ear is 1.357W/kg and when worn on the body, as described in this user guide, is 1.279 W/kg (Body-worn measurements differ among phone models, depending upon available accessories and FCC requirements.)

While there may be differences between the SAR levels of various phones and at various positions, they all meet the government requirement.

The FCC has granted an Equipment Authorization for this model phone with all reported SAR levels evaluated as in compliance with the FCC RF exposure guidelines. SAR information on this model phone is on file with the FCC and can be found under the Display Grant section of www.fcc.gov/oet/ea/fccid after searching on FCC ID: T38 8690.

For body worn operation, this phone has been tested and meets the FCC RF exposure guidelines for use with an accessory that contains no metal and the positions the handset a minimum of 1.5 cm from the body. Use of other accessories may not ensure compliance with FCC RF exposure guidelines. If you do not use a body-worn accessory and are not holding the phone at the ear,

position the handset a minimum of 1.5 cm from your body when the phone is switched on.

FCC Regulations

This mobile phone complies with part 15 of the FCC Rules. Operation is subject to the following two conditions: (1) This device may not cause harmful interference, and (2) this device must accept any interference received, including interference that may cause undesired operation.

This mobile phone has been tested and found to comply with the limits for a Class B digital device, pursuant to Part 15 of the FCC Rules. These limits are designed to provide reasonable protection against harmful interference in a residential installation. This equipment generates uses and can radiate radio frequency energy and, if not installed and used in accordance with the instructions, may cause harmful interference to radio communications. However, there is no guarantee that interference will not occur in a particular installation. If this equipment does cause harmful interference to radio or television reception, which can be determined by turning the equipment off and on, the user is encouraged to try to correct the interference by one or more of the following measures:

- Reorient or relocate the receiving antenna.
 - Increase the separation between the equipment and receiver.
 - Connect the equipment into an outlet on a circuit different from that to which the receiver is connected.
 - Consult the dealer or an experienced radio/TV technician for help.
- Changes or modifications not expressly approved by the party responsible for compliance could void the user's authority to operate the equipment.

The antenna(s) used for this transmitter must not be co-located or operating in conjunction with any other antenna or transmitter.